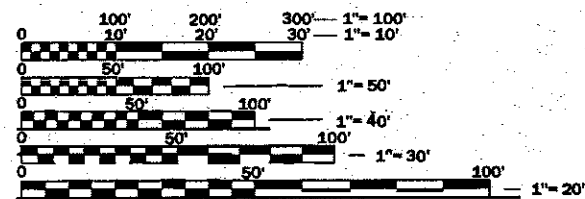


1. COVER SHEET
2. GENERAL NOTES
- 3 - 5. SUMMARY OF QUANTITIES
- 6 - 10. TYPICAL SECTIONS
- 11 - 19. SCHEDULES
20. TRAFFIC CONTROL AND PROTECTION, STANDARD 701400
- 21 - 22. CLASS A PATCHING DETAILS
- 23 - 24. CLASS B PATCHING DETAILS
25. CLASS C PATCHING DETAILS
26. PAVEMENT MARKING DETAILS

STANDARDS

- | | |
|-----------|--|
| 000001-06 | STANDARD SYMBOLS, ABBREVIATIONS AND PATTERNS |
| 001001-02 | AREAS OF REINFORCEMENT BARS |
| 001006 | DECIMAL OF AN INCH AND OF A FOOT |
| 420001-09 | PAVEMENT JOINTS |
| 701101-05 | OFF-ROAD OPERATIONS, MULTILANE, 15' (4.5 m) TO 24" (600 mm) FROM PAVEMENT EDGE |
| 701106-02 | OFF-ROAD OPERATIONS, MULTILANE, MORE THAN 15' (4.5 m) AWAY |
| 701401-11 | LANE CLOSURE, FREEWAY/EXPRESSWAY |
| 701411-09 | LANE CLOSURE, MULTILANE, AT ENTRANCE OR EXIT RAMP FOR SPEEDS ≥ 45 MPH |
| 701426-09 | LANE CLOSURE, MULTILANE INTERMITTENT OR MOVING OPERATION, FOR SPEEDS ≥ 45 MPH |
| 701428-01 | TRAFFIC CONTROL, SETUP AND REMOVAL, FREEWAY/EXPRESSWAY |
| 701901-07 | TRAFFIC CONTROL DEVICES |
| 701400-09 | APPROACH TO LANE CLOSURE, FREEWAY/EXPRESSWAY |



FULL SIZE PLANS HAVE BEEN PREPARED USING STANDARD ENGINEERING SCALES. REDUCED SIZED PLANS WILL NOT CONFORM TO STANDARD SCALES. IN MAKING MEASUREMENTS ON REDUCED PLANS, THE ABOVE SCALES MAY BE USED.

J.U.L.I.E.
JOINT UTILITY LOCATION INFORMATION FOR EXCAVATION
1-800-892-0123
OR 811

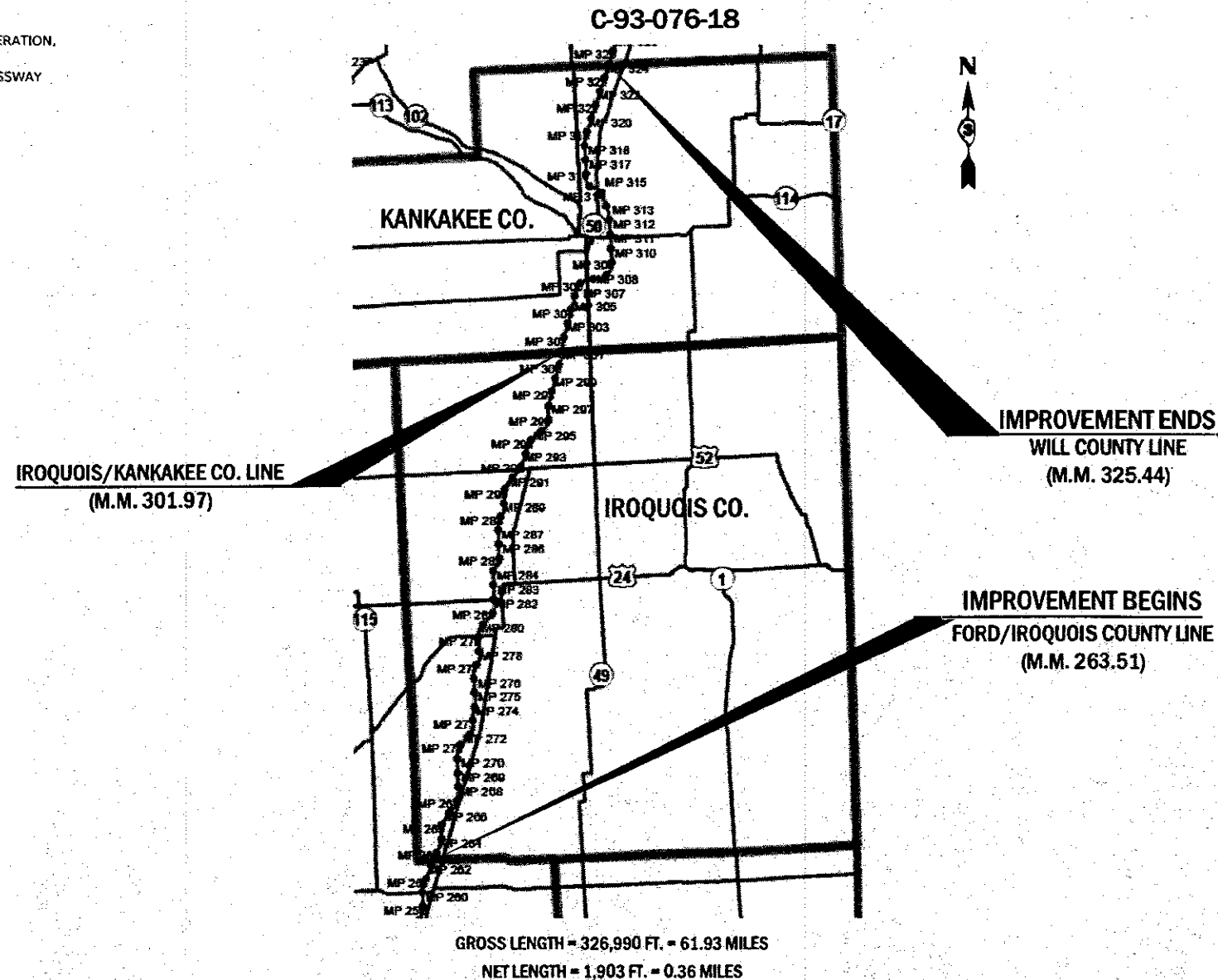
PROJECT ENGINEER: JOE KANNEL P.E.
UNIT CHIEF: RON WOODSHANK
DISTRICT 3 NO. (815) 434-6131
CONTRACT NO. 66J32

STATE OF ILLINOIS
DEPARTMENT OF TRANSPORTATION

**PROPOSED
HIGHWAY PLANS**

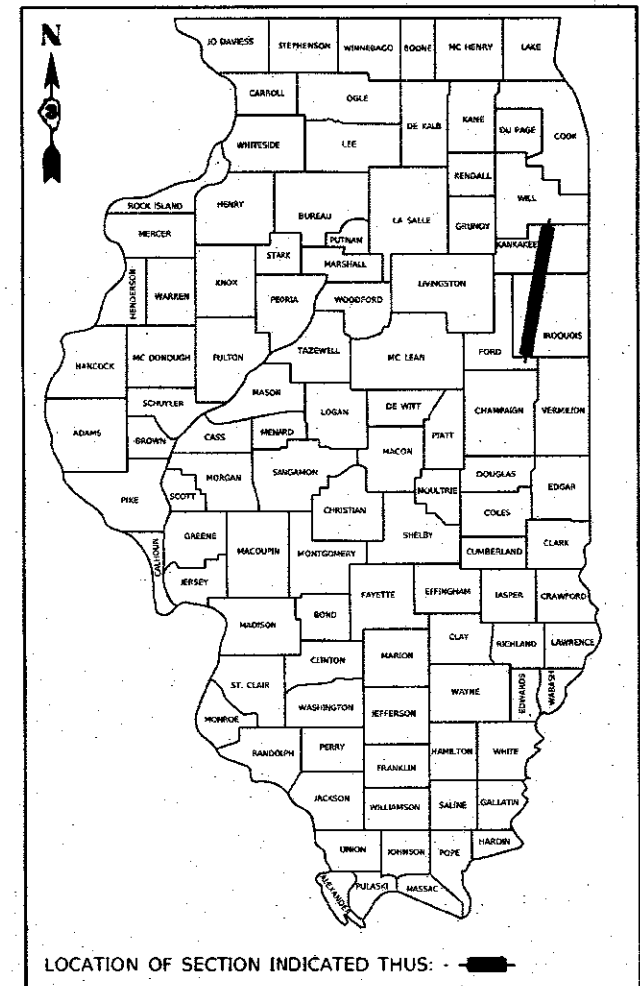
F.A. I. ROUTE 57 (I-57)
SECTION D3 I-57 PP 2019-1
PROJECT

PAVEMENT PATCHING
IROQUOIS AND KANKAKEE COUNTIES



F.A.I. RTE.	SECTION	COUNTY	TOTAL SHEETS	SHEET NO.
57	D3 I-57 PP 2019-1		26	1
IROQUOIS AND KANKAKEE ILLINOIS			CONTRACT NO. 66J32	

D-93-072-18



FUNCTIONAL CLASSIFICATION

RURAL/URBAN INTERSTATE

F.A.I. ROUTE 57 (I-57)

2017 ADT = 35200

P.V. 55.0% S.U. 10.4% M.U. 34.6%

STATE OF ILLINOIS
DEPARTMENT OF TRANSPORTATION

SUBMITTED 3-29 2018
K. Marshall
REGIONAL ENGINEER
May 10 2018
A. Elk
ENGINEER OF DESIGN AND ENVIRONMENT
May 10 2018
Paul P. Ch...
DIRECTOR OF HIGHWAYS PROJECT IMPLEMENTATION

**PRINTED BY THE AUTHORITY
OF THE STATE OF ILLINOIS**

GENERAL NOTES

PLAN DIMENSIONS AND DETAILS RELATIVE TO EXISTING PLANS ARE SUBJECT TO NOMINAL CONSTRUCTION VARIATIONS. THE CONTRACTOR SHALL FIELD VERIFY EXISTING DIMENSIONS AND DETAILS AFFECTING NEW CONSTRUCTION AND MAKE NECESSARY APPROVED ADJUSTMENTS PRIOR TO CONSTRUCTION OR ORDERING OF MATERIALS. SUCH VARIATIONS SHALL NOT BE CAUSE FOR ADDITIONAL COMPENSATION FOR A CHANGE IN SCOPE OF WORK; HOWEVER, THE CONTRACTOR WILL BE PAID FOR THE QUANTITY ACTUALLY FURNISHED AT THE UNIT PRICE BID FOR THE WORK.

FOR STABILIZATION, ALL TYPE III BARRICADES WILL REQUIRE A MINIMUM OF FOUR SAND BAGS PER BARRICADE.

ALL EXCAVATED MATERIAL, WHICH INCLUDES DIGGING OR GRADING OF ANY SOIL OR FILL MATERIAL, WITH THE EXCEPTION OF AGGREGATE FILLS, MUST BE INCORPORATED WITHIN THE IDOT RIGHT OF WAY DUE TO ENVIRONMENTAL DOCUMENTATION REQUIREMENTS.

ANY REFERENCE TO A STANDARD IN THESE PLANS SHALL BE INTERPRETED TO MEAN THE EDITION AS INDICATED BY THE SUBNUMBER SHOWN IN THE LIST OF STANDARDS OR THE COPY INCLUDED IN THESE PLANS.

THE CONTRACTOR SHALL CONTACT JULIE AT LEAST 48 HOURS PRIOR TO EXCAVATION TO DETERMINE WHICH UTILITIES ARE IN THE AREA.

COMMITMENTS

STATE OF ILLINOIS
DEPARTMENT OF TRANSPORTATION
DISTRICT THREE
AS BUILT INFORMATION

SUPERVISING CONSTRUCTION FIELD ENGINEER

RESIDENT ENGINEER / TECHNICIAN

START & END DATES
OF CONSTRUCTION:

INSPECTORS:

STATE OF ILLINOIS
DEPARTMENT OF TRANSPORTATION
DISTRICT THREE

PREPARED BY: *Don Bevil*
DISTRICT STUDIES & PLANS ENGINEER

DATE: 3-27-18

EXAMINED BY: *Kyle Videman*
DISTRICT CONSTRUCTION ENGINEER

Michael J. Shurt
DISTRICT MATERIALS ENGINEER

Jan Hagan
DISTRICT OPERATIONS ENGINEER

FILE NAME =	USER NAME = woodhaxkf	DESIGNED -	REVISED -
\\p0110468\BENTLEY\Illinois\gov\WIDOT\Documents\DOT\Office\District 3\Projects\13466\32\CAD\Detail\6132-Details		DRAWN -	REVISED -
Default:	PLOT SCALE = 100.0000' / 1" =	CHECKED -	REVISED -
	PLOT DATE = 3/24/2018	DATE -	REVISED -

STATE OF ILLINOIS
DEPARTMENT OF TRANSPORTATION

GENERAL NOTES

SCALE: SHEET 1 OF 1 SHEETS STA. TO STA.

F.A.I. RTE.	SECTION	COUNTY	TOTAL SHEETS	SHEET NO.
57	D3 I-57 PP 2018-1		26	2
"ROQUOIS AND KANKAKEE			CONTRACT NO. 66132	
ILLINOIS FED. AID PROJECT				

CODE NO.	ITEM	UNIT	TOTAL QUANTITY	CONSTRUCTION CODE		
				CONTRACT MAINTENANCE 100% STATE ROADWAY	CONTRACT MAINTENANCE 100% STATE ROADWAY	
				0005	0005	
				IROQUOIS COUNTY RURAL	KANKAKEE COUNTY RURAL URBAN	
44200050	WELDED WIRE REINFORCEMENT	SQ YD	256			256
44200577	CLASS A PATCHES, TYPE II, 12 INCH	SQ YD	8			8
44200610	CLASS A PATCHES, TYPE II, 13 INCH	SQ YD	1243	1243		
44200612	CLASS A PATCHES, TYPE III, 13 INCH	SQ YD	96	96		
44200614	CLASS A PATCHES, TYPE IV, 13 INCH	SQ YD	27	27		
44200630	CLASS A PATCHES, TYPE II, 15 INCH	SQ YD	208		80	128
44200631	CLASS A PATCHES, TYPE III, 15 INCH	SQ YD	44			44
44200632	CLASS A PATCHES, TYPE IV, 15 INCH	SQ YD	93			93
44200637	CLASS A PATCHES, TYPE II, 17 INCH	SQ YD	264		128	136
44201019	CLASS B PATCHES, TYPE II, 14 INCH	SQ YD	24			24
44201053	CLASS B PATCHES, TYPE IV, 17 INCH	SQ YD	250			250
44201055	CLASS B PATCHES, TYPE II, 17 INCH	SQ YD	40			40
44201057	CLASS B PATCHES, TYPE III, 17 INCH	SQ YD	200			200
44201102	CLASS B PATCHES, TYPE II, 20 INCH	SQ YD	75			75

14

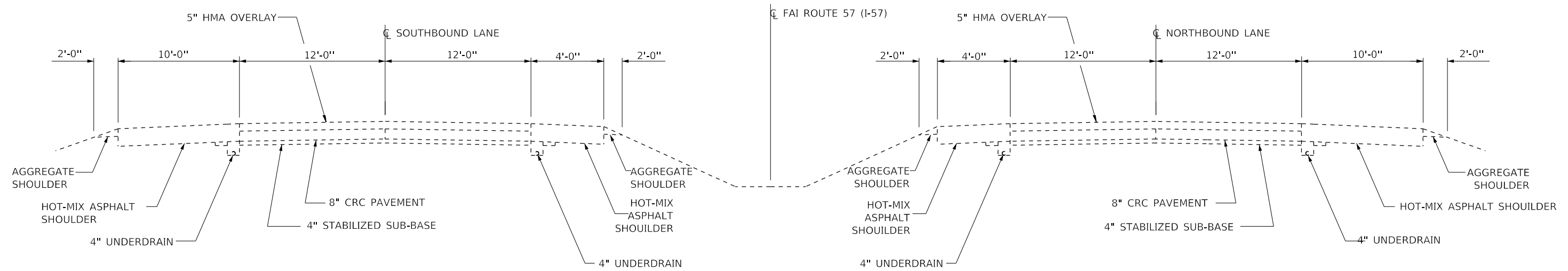
CODE NO.	ITEM	UNIT	TOTAL QUANTITY	CONSTRUCTION CODE			
				CONTRACT MAINTENANCE 100% STATE		CONTRACT MAINTENANCE 100% STATE	
				ROADWAY		ROADWAY	
				0005		0005	
				IROQUOIS COUNTY		KANKAKEE COUNTY	
				RURAL	RURAL	URBAN	
44201104	CLASS B PATCHES, TYPE III, 20 INCH	SQ YD	16			16	
44201299	DOWEL BARS 1 1/2"	EACH	1060			1060	
44201461	CLASS C PATCHES, TYPE II, 20 INCH	SQ YD	92		46	46	
44201465	CLASS C PATCHES, TYPE IV, 20 INCH	SQ YD	75		50	25	
44213000	PATCHING REINFORCEMENT	SQ YD	1983	1366	208	409	
44213200	SAW CUTS	FOOT	11665	5837	1176	4652	
44213204	TIE BARS 3/4"	EACH	9484	6646	1092	1746	
67100100	MOBILIZATION	L SUM	1	0.5	0.25	0.25	
70100420	TRAFFIC CONTROL AND PROTECTION, STANDARD 701411	EACH	44	24		20	
70100800	TRAFFIC CONTROL AND PROTECTION, STANDARD 701401	L SUM	1	0.5	0.17	0.33	
70103815	TRAFFIC CONTROL SURVEILLANCE	CAL DAY	41	20	5	16	
70200100	NIGHTTIME WORK ZONE LIGHTING	L SUM	1			1	
* 78008310	POLYUREA PAVEMENT MARKING TYPE II - LINE 4"	FOOT	2073	1022	220	831	
* 78008330	POLYUREA PAVEMENT MARKING TYPE II - LINE 6"	FOOT	2180	1240	270	670	

14

* SPECIALTY ITEMS

CODE NO.	ITEM	UNIT	TOTAL QUANTITY	CONSTRUCTION CODE		
				CONTRACT MAINTENANCE 100% STATE		CONTRACT MAINTENANCE 100% STATE
				ROADWAY		ROADWAY
				0005		0005
				IROQUOIS COUNTY		KANKAKEE COUNTY
				RURAL	RURAL	URBAN
X0325969	PORTABLE, VEHICLE MOUNTED, CHANGEABLE MESSAGE BOARD	CAL DAY	41	20	5	16
X0326880	MESSAGE BOARD VEHICLE DRIVER	HOURL	410	200	50	160
X2700001	TEMPORARY RUMBLE STRIPS (SPECIAL)	EACH	46	26	4	16
X7015005	CHANGEABLE MESSAGE SIGN	CAL DAY	69	34	12	23

9



TYPICAL SECTION
M.M. 263.51 TO M.M. 301.97
IROQUOIS COUNTY

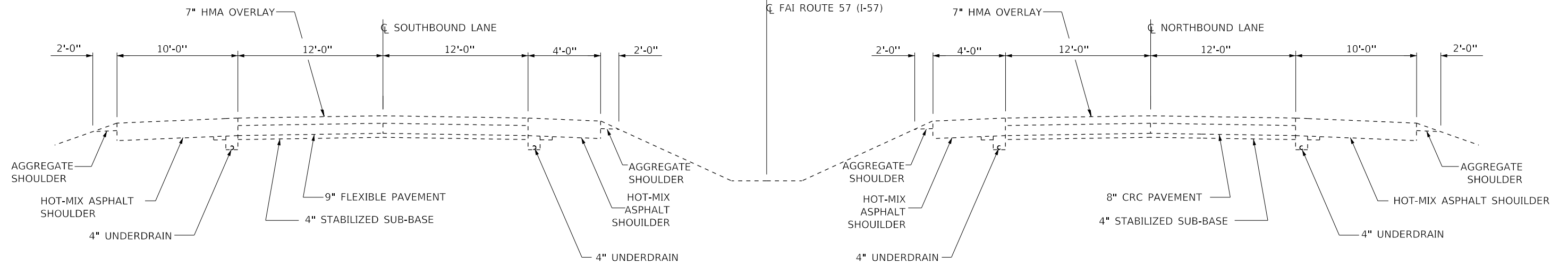
FILE NAME =	USER NAME = woodshank1	DESIGNED -	REVISED -
pw:\IL084EB\INTEG\Illinois.gov\PWIDOT\Documents\DOT Offices\District 3\Projects\D366J32\CADDData\66J32-Details.dgn		DRAWN -	REVISED -
Default	PLOT SCALE = 100,0000' / in.	CHECKED -	REVISED -
	PLOT DATE = 3/24/2018	DATE -	REVISED -

STATE OF ILLINOIS
DEPARTMENT OF TRANSPORTATION

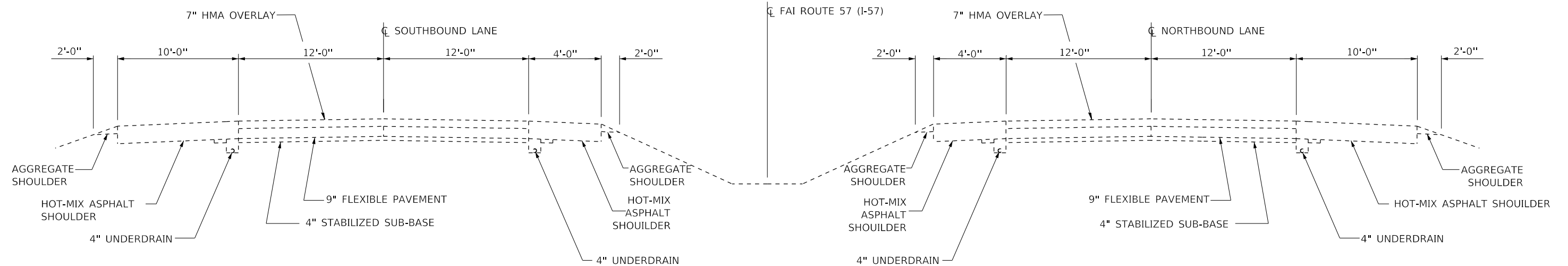
TYPICALS
IROQUOIS COUNTY

SCALE: SHEET 1 OF 5 SHEETS STA. TO STA.

F.A.I. RTE.	SECTION	COUNTY	TOTAL SHEETS	SHEET NO.
57	D3 I-57 PP 2019-1	*	26	6
*IROQUOIS AND KANKAKEE			CONTRACT NO. 66J32	
ILLINOIS FED. AID PROJECT				



TYPICAL SECTION
M.M. 301.97 TO M.M. 307.60
KANKAKEE COUNTY



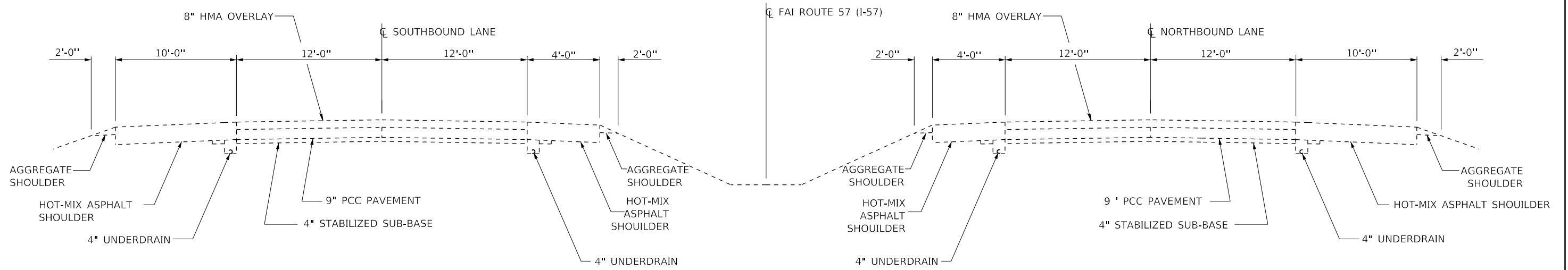
TYPICAL SECTION
M.M. 307.60 TO M.M. 309.96
KANKAKEE COUNTY

FILE NAME =	USER NAME = woodshank1	DESIGNED -	REVISED -
pw:\IL084EB\INTEG\Illinois.gov\PWIDOT\Documents\DOT Offices\District 3\Projects\D366J32\CADDData\66J32-Details.dgn		DRAWN -	REVISED -
Default	PLOT SCALE = 100.0000' / in.	CHECKED -	REVISED -
	PLOT DATE = 3/24/2018	DATE -	REVISED -

STATE OF ILLINOIS
DEPARTMENT OF TRANSPORTATION

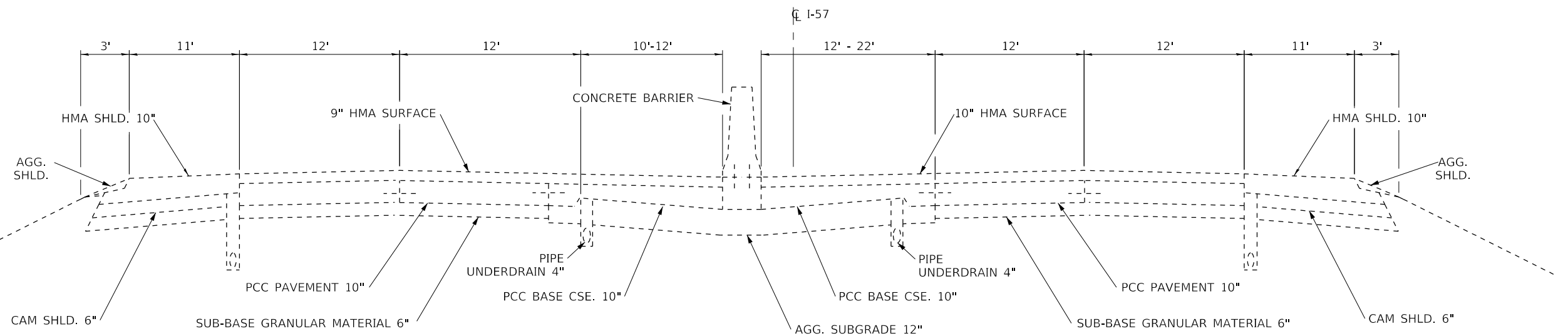
TYPICALS			
SCALE:	SHEET 2	OF 5 SHEETS	STA. TO STA.

F.A.I. RTE.	SECTION	COUNTY	TOTAL SHEETS	SHEET NO.
57	D3 I-57 PP 2019-1	*	26	7
* IROQUOIS AND KANKAKEE			CONTRACT NO. 66J32	
ILLINOIS FED. AID PROJECT				



TYPICAL SECTION

M.M. 309.96 TO M.M. 314.75
KANKAKEE COUNTY



TYPICAL SECTION

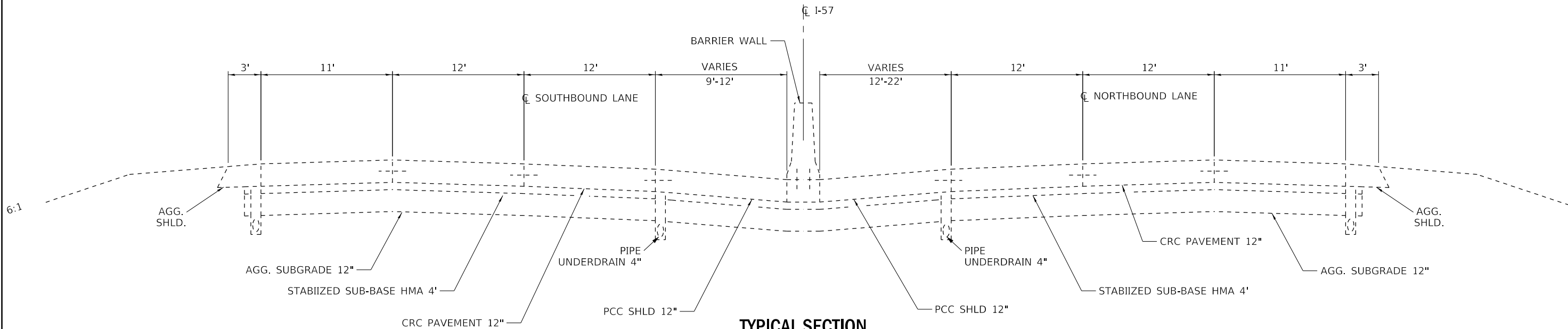
M.M. 314.75 TO M.M. 314.84
KANKAKEE COUNTY

FILE NAME =	USER NAME = woodshank1	DESIGNED -	REVISED -
pw:\IL084EB\INTEG\Illinois.gov\PWIDOT\Documents\DOT Offices\District 3\Projects\D366J32\CADDData\66J32-Details.dgn		DRAWN -	REVISED -
Default	PLOT SCALE = 100.0000' / in.	CHECKED -	REVISED -
	PLOT DATE = 3/24/2018	DATE -	REVISED -

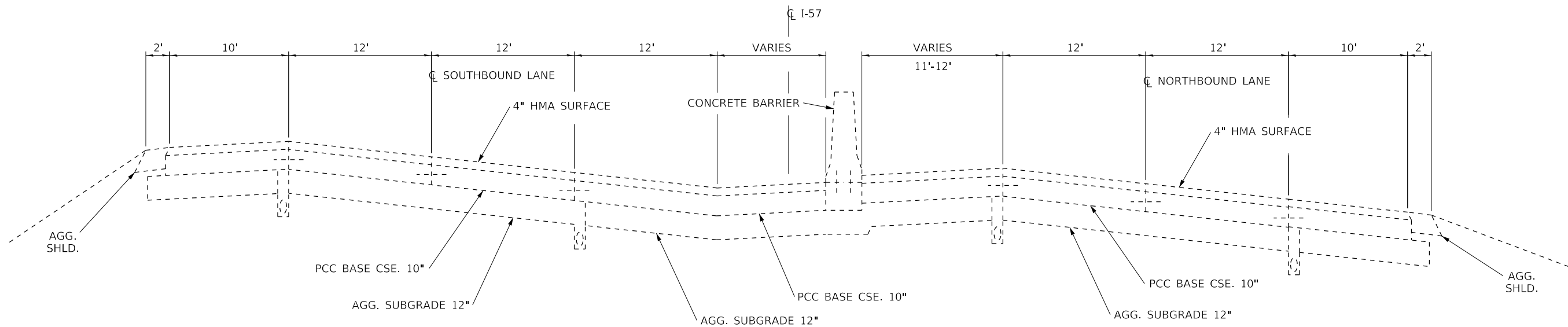
**STATE OF ILLINOIS
DEPARTMENT OF TRANSPORTATION**

TYPICALS	
SCALE:	SHEET 3 OF 5 SHEETS STA. TO STA.

F.A.I. RTE.	SECTION	COUNTY	TOTAL SHEETS	SHEET NO.
57	D3 I-57 PP 2019-1	*	26	8
*IROQUOIS AND KANKAKEE			CONTRACT NO. 66J32	
ILLINOIS FED. AID PROJECT				

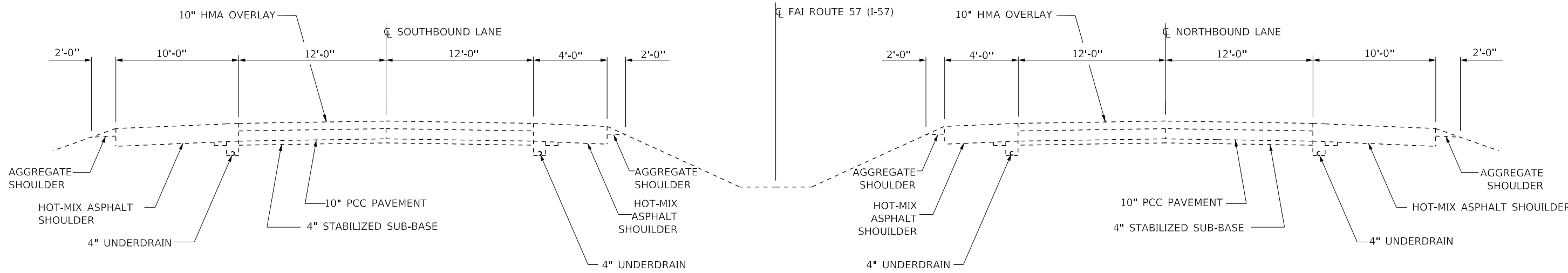


TYPICAL SECTION
M.M. 314.84 TO M.M. 316.14
KANKAKEE COUNTY



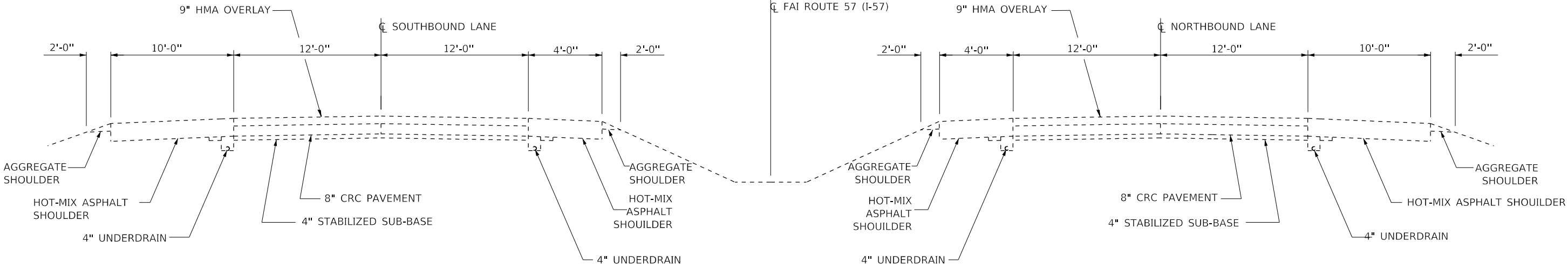
TYPICAL SECTION
M.M. 316.14 TO M.M. 316.63
KANKAKEE COUNTY

FILE NAME =	USER NAME = woodshank1	DESIGNED -	REVISED -	STATE OF ILLINOIS DEPARTMENT OF TRANSPORTATION	TYPICALS		F.A.I. RTE.	SECTION	COUNTY	TOTAL SHEETS	SHEET NO.
pw:\IL084EB\INTEG\Illinois.gov\PWIDOT\Documents\DOT Offices\District 3\Projects\D366J32\CADDData\66J32-Details.dgn	DRAWN -	REVISED -	57				D3 I-57 PP 2019-1	*	26	9	
Default	PLOT SCALE = 100,0000' / in.	CHECKED -	REVISED -		SCALE:		SHEET 4 OF 5 SHEETS	STA.	TO STA.	CONTRACT NO. 66J32	
	PLOT DATE = 3/24/2018	DATE -	REVISED -		ILLINOIS FED. AID PROJECT						



TYPICAL SECTION

M.M. 316.63 TO M.M. 321.13
KANKAKEE COUNTY



TYPICAL SECTION

M.M. 321.13 TO M.M. 325.04
KANKAKEE COUNTY

FILE NAME =	USER NAME = woodshank1	DESIGNED -	REVISED -
pw:\IL084EB\INTEG\Illinois.gov\PWIDOT\Documents\DOT Offices\District 3\Projects\D366J32\CADData\66J32-Details.dgn		DRAWN -	REVISED -
Default	PLOT SCALE = 100.0000' / in.	CHECKED -	REVISED -
	PLOT DATE = 3/24/2018	DATE -	REVISED -

**STATE OF ILLINOIS
DEPARTMENT OF TRANSPORTATION**

TYPICALS
SCALE: SHEET 5 OF 5 SHEETS STA. TO STA.

F.A.I. RTE.	SECTION	COUNTY	TOTAL SHEETS	SHEET NO.
57	D3 I-57 PP 2019-1	*	26	10
*TROTTOIR AND KANKAKEE			CONTRACT NO. 66132	
ILLINOIS FED. AID PROJECT				

**SCHEDULE - PATCHING
NORTHBOUND LANES - RURAL**

LOCATION	PASSING LANE							DRIVING LANE						
	PATCH LENGTH	CLASS A PATCHING			PATCH REINF.	SAW CUTS	TIE BARS 3/4"	PATCH LENGTH	CLASS A PATCHING			PATCH REINF.	SAW CUTS	TIE BARS 3/4"
		TYPE II 13"	TYPE III 13"	TYPE IV 13"					TYPE II 13"	TYPE III 13"	TYPE IV 13"			
MILE MARKER	FEET	SQ YD	SQ YD	SQ YD	SQ YD	FOOT	EACH	FEET	SQ YD	SQ YD	SQ YD	SQ YD	FOOT	EACH
265.70								6	8			8	36	42
265.80	6	8			8	36	42							
266.20								6	8			8	36	42
269.30								6	8			8	36	42
269.40								6	8			8	36	42
270.00	6	8			8	36	42							
270.70	6	8			8	36	42	6	8			8	36	42
276.20								6	8			8	36	42
276.58	6	8			8	36	42							
276.59								6	8			8	36	42
277.40								6	8			8	36	42
277.48								6	8			8	36	42
277.51	6	8			8	36	42	6	8			8	36	42
277.52								6	8			8	36	42
279.40								6	8			8	36	42
279.70								6	8			8	36	42
281.00								6	8			8	36	42
281.01								6	8			8	36	42
281.82								6	8			8	36	42
281.83	6	8			8	36	42							
281.90	20			27	27	64	52							
281.97								6	8			8	36	42
282.02	8	11			11	40	42	8	11			11	40	42
282.40	6	8			8	36	42	6	8			8	36	42
282.90	6	8			8	36	42							
282.96	6	8			8	36	42							
283.02	6	8			8	36	42							
283.50	6	8			8	36	42	6	8			8	36	42
283.71	6	8			8	36	42							
284.10	6	8			8	36	42	6	8			8	36	42
284.12	6	8			8	36	42	6	9			9	37	42
284.32	6	8			8	36	42							
284.51	6	8			8	36	42	6	8			8	36	42
284.80								6	8			8	36	42
285.05								6	8			8	36	42
285.11								6	8			8	36	42
288.70	6	8			8	36	42	6	8			8	36	42
291.90	6	8			8	36	42	6	8			8	36	42
292.05	6	8			8	36	42							
292.13	6	8			8	36	42	6	8			8	36	42
292.20								6	8			8	36	42
292.40								6	8			8	36	42
292.50	6	8			8	36	42							
293.70	6	8			8	36	42	6	8			8	36	42
293.80	6	8			8	36	42	6	8			8	36	42
294.30	6	8			8	36	42	6	8			8	36	42
294.40								6	8			8	36	42
295.30								6	8			8	36	42
295.40								6	8			8	36	42
295.75	6	8			8	36	42	6	8			8	36	42
295.90	6	8			8	36	42	6	8			8	36	42
298.11	6	8			8	36	42							
298.30	6	8			8	36	42							
TOTALS		235		27	262	1112	1270		316			316	1409	1638

FILE NAME =	woodshank1	DESIGNED -	REVISED -
pw:\IL04EB\INTEG\Illinois.gov\PWIDOT\Documents\DOT Offices\District 3\Projects\0366J32\CADDData\66J32-Detalls.dgn		DRAWN -	REVISED -
100.0000' / in.		CHECKED -	REVISED -
Default	3/24/2018	DATE -	REVISED -

**STATE OF ILLINOIS
DEPARTMENT OF TRANSPORTATION**

**SCHEDULE - PATCHING
IROQUOIS COUNTY**

SCALE: SHEET 1 OF 9 SHEETS STA. TO STA.

F.A.I. RTE.	SECTION	COUNTY	TOTAL SHEETS	SHEET NO.
57	D3 L57 PP 2019-1	*	26	11
*IROQUOIS AND KANKAKEE			CONTRACT NO. 66J32	
ILLINOIS FED. AID PROJECT				

**SCHEDULE - PATCHING
SOUTHBOUND LANES - RURAL**

LOCATION	PASSING LANE							DRIVING LANE							
	PATCH LENGTH	CLASS A PATCHING			PATCH REINF.	SAW CUTS	TIE BARS 3/4"	PATCH LENGTH	CLASS A PATCHING			PATCH REINF.	SAW CUTS	TIE BARS 3/4"	
		TYPE II 13"	TYPE III 13"	TYPE IV 13"					TYPE II 13"	TYPE III 13"	TYPE IV 13"				
MILE MARKER	FEET	SQ YD	SQ YD	SQ YD	SQ YD	FOOT	EACH	FEET	SQ YD	SQ YD	SQ YD	SQ YD	FOOT	EACH	
301.90	6	8			8	36	42						8	36	42
301.50	6	8			8	36	42	6	8			8	36	42	
300.40	6	8			8	36	42	6	8			8	36	42	
300.10	6	8			8	36	42	6	8			8	36	42	
299.50	6	8			8	36	42	6	8			8	36	42	
299.40	6	8			8	36	42	6	8			8	36	42	
299.30								6	8			8	36	42	
299.00	6	8			8	36	42	6	8			8	36	42	
297.80	6	8			8	36	42	6	8			8	36	42	
297.50	6	8			8	36	42	6	8			8	36	42	
296.30	6	8			8	36	42								
295.90								6	8			8	36	42	
294.30	6	8			8	36	42	6	8			8	36	42	
293.30	6	8			8	36	42								
292.40	6	8			8	36	42	6	8			8	36	42	
292.00								6	8			8	36	42	
290.30	6	8			8	36	42	6	8			8	36	42	
290.00								6	8			8	36	42	
285.20								10	13			13	44	42	
284.40	6	8			8	36	42	6	8			8	36	42	
283.90	6	8			8	36	42								
283.73								6	8			8	36	42	
283.30	6	8			8	36	42	6	8			8	36	42	
283.20								6	8			8	36	42	
283.10								12		16		16	48	42	
282.60								8	11			11	40	42	
280.60	6	8			8	36	42	8	11			11	40	42	
280.50								8	11			11	40	42	
280.45								6	8			8	36	42	
279.97								6	8			8	36	42	
279.90								6	8			8	36	42	
278.80								10	13			13	44	42	
278.46								6	8			8	36	42	
277.20								6	8			8	36	42	
276.80								6	8			8	36	42	
276.60								6	8			8	36	42	
276.40								6	8			8	36	42	
276.20								6	8			8	36	42	
275.95								6	8			8	36	42	
275.59								6	8			8	36	42	
275.51								6	8			8	36	42	
275.20								6	8			8	36	42	
275.10								6	8			8	36	42	
274.97								6	8			8	36	42	
274.90								6	8			8	36	42	
274.84								6	8			8	36	42	
274.80								6	8			8	36	42	
274.84								6	8			8	36	42	
274.50								6	8			8	36	42	
272.80								12		16		16	48	42	
271.60								8	11			11	40	42	
271.30								6	8			8	36	42	
271.22								8	11			11	40	42	
270.55								6	8			8	36	42	
270.10								6	8			8	36	42	
270.00								6	8			8	36	42	
268.90	6	8			8	36	42	6	8			8	36	42	
268.60								6	8			8	36	42	
268.20								6	8			8	36	42	
268.10								6	8			8	36	42	
267.80	6	8			8	36	42	6	8			8	36	42	
267.69								6	8			8	36	42	
267.50	6	8			8	36	42	6	8			8	36	42	
267.40								8	11			11	40	42	
266.65								6	8			8	36	42	
265.76								12		16		16	48	42	
265.75								12		16		16	48	42	
265.74	12		16		16	48	42								
265.72	12		16		16	48	42								
264.90	6	8			8	36	42								
263.70	6	8			8	36	42	6	8			8	36	42	
TOTALS		184	32		216	924	1050		508	64		572	2392	2688	

**SCHEDULE - PAVEMENT MARKING
NORTHBOUND LANES - RURAL**

LOCATION MILE POST	POLYUREA PAVEMENT MARKING TYPE I LINE 4"		POLYUREA PAVEMENT MARKING TYPE I LINE 6"
	FEET		FEET
	YELLOW	WHITE	WHITE
265.70		6	10
265.80	6		10
266.20		6	10
269.30		6	10
269.40		6	10
270.00	6		10
270.70	6	6	10
276.20		6	10
276.58	6		10
276.59		6	10
277.40		6	10
277.48		6	10
277.51	6	6	10
277.52		6	10
279.40		6	10
279.70		6	10
281.00		6	10
281.01		6	10
281.82		6	10
281.83	6		10
281.90	20		10
281.97		6	10
282.02	8	8	10
282.40	6	6	10
282.90	6		10
282.96	6		10
283.02	6		10
283.50	6	6	10
283.71	6		10
284.10	6	6	10
284.12	6	6	10
284.32	6		10
284.51	6	6	10
284.80		6	10
285.05		6	10
285.11		6	10
288.70	6	6	10
291.90	6	6	10
292.05	6		10
292.13	6	6	10
292.20		6	10
292.40		6	10
292.50	6		10
293.70	6	6	10
293.80	6	6	10
294.30	6	6	10
294.40		6	10
295.30		6	10
295.40		6	10
295.75	6	6	10
295.90	6	6	10
298.11	6		10
298.30	6		10
SUBTOTAL	196	236	
TOTAL		432	530

**SCHEDULE - PAVEMENT MARKING
SOUTHBOUND LANES - RURAL**

LOCATION MILE POST	POLYUREA PAVEMENT MARKING TYPE I LINE 4"		POLYUREA PAVEMENT MARKING TYPE I LINE 6"
	FEET		FEET
	YELLOW	WHITE	WHITE
301.90	6		10
301.50	6	6	10
300.40	6	6	10
300.10	6	6	10
299.50	6	6	10
299.40	6	6	10
299.30		6	10
299.00	6	6	10
297.80	6	6	10
297.50	6	6	10
296.30	6		10
295.90		6	10
294.30	6	6	10
293.30	6		10
292.40	6	6	10
292.00		6	10
290.30	6	6	10
290.00		6	10
285.20		10	10
284.40	6	6	10
283.90	6		10
283.73		6	10
283.30	6	6	10
283.20		6	10
283.10		12	10
282.60		8	10
280.60	6	8	10
280.50		8	10
280.45		6	10
279.97		6	10
279.90		6	10
278.80		10	10
278.46		6	10
277.20		6	10
276.80		6	10
276.60		6	10
276.40		6	10
276.20		6	10
275.95		6	10
275.59		6	10
275.51		6	10
275.20		6	10
275.10		6	10
274.97		6	10
274.90		6	10
274.84		6	10
274.80		6	10
274.84		6	10
274.50		6	10
272.80		12	10
271.60		8	10
271.30		6	10
271.22		8	10
PG. 1 SUBTOTAL	108	324	
PG. 1 TOTAL		432	530

**SCHEDULE - PAVEMENT MARKING
SOUTHBOUND LANES - RURAL**

LOCATION MILE POST	POLYUREA PAVEMENT MARKING TYPE I LINE 4"		POLYUREA PAVEMENT MARKING TYPE I LINE 6"
	FEET		FEET
	YELLOW	WHITE	WHITE
270.55		6	10
270.10		6	10
270.00		6	10
268.90	6	6	10
268.60		6	10
268.20		6	10
268.10		6	10
267.80	6	6	10
267.69		6	10
267.50	6	6	10
267.40		8	10
266.65		6	10
265.76		12	10
265.75		12	10
265.74	12		10
265.72	12		10
264.90	6		10
263.70	6	6	10
PG. 2 SUBTOTAL	54	104	
PG. 2 TOTAL		158	180

**SCHEDULE - PATCHING
NORTHBOUND LANES - RURAL**

LOCATION	PASSING LANE							DRIVING LANE						
	PATCH LENGTH	CLASS A PATCHING			PATCH REINF.	SAW CUTS	TIE BARS 3/4"	PATCH LENGTH	CLASS A PATCHING			PATCH REINF.	SAW CUTS	TIE BARS 3/4"
		TYPE II 15"	TYPE III 15"	TYPE IV 15"					TYPE II 15"	TYPE III 15"	TYPE IV 15"			
MILE MARKER	FEET	SQ YD	SQ YD	SQ YD	SQ YD	FOOT	EACH	FEET	SQ YD	SQ YD	SQ YD	SQ YD	FOOT	EACH
302.30	6	8			8	36	42							
302.31	6	8			8	36	42							
302.70								6	8			8	36	42
302.88	6	8			8	36	42	6	8			8	36	42
303.34								6	8			8	36	42
303.50	6	8			8	36	42	6	8			8	36	42
303.97								6	8			8	36	42
304.10	6	8			8	36	42							
TOTALS		40			40	180	210		40	0	0	40	180	210

**SCHEDULE - PATCHING
NORTHBOUND LANES - URBAN**

LOCATION	PASSING LANE							DRIVING LANE						
	PATCH LENGTH	CLASS A			PATCH REINF.	SAW CUTS	TIE BARS 3/4"	PATCH LENGTH	CLASS A			PATCH REINF.	SAW CUTS	TIE BARS 3/4"
		TYPE II 15"	TYPE III 15"	TYPE IV 15"					TYPE II 15"	TYPE III 15"	TYPE IV 15"			
MILE MARKER	FEET	SQ YD	SQ YD	SQ YD	SQ YD	FOOT	EACH	FEET	SQ YD	SQ YD	SQ YD	SQ YD	FOOT	EACH
306.10								6	8			8	36	42
306.11								6	8			8	36	42
306.80								6	8			8	36	42
307.03	6	8			8	36	42							
307.10	6	8			8	36	42							
307.12								6	8			8	36	42
307.17								6	8			8	36	42
307.19	25			33	33	74	54	25			33	33	74	54
307.20	6	8			8	36	42	6	8			8	36	42
307.30	6	8			8	36	42	6	8			8	36	42
307.38	18		24		24	60	42							
307.47	6	8			8	36	42							
307.48	6	8			8	36	42							
307.50	15		20		20	54	42							
307.52	20			27	27	64	52							
307.60	6	8		0	8	36	42	6	8			8	36	42
TOTALS		56	44	60	160	504	484		72		33	105	398	432

**SCHEDULE - PATCHING
NORTHBOUND LANES - URBAN**

LOCATION	PASSING LANE			DRIVING LANE		
	PATCH LENGTH	CLASS C		PATCH LENGTH	CLASS C	
		TYPE II 20"	SAW CUTS		TYPE II 20"	SAW CUTS
MILE MARKER	FEET	SQ YD	FOOT	FEET	SQ YD	FOOT
309.20				6	8	36
TOTALS		0	0		8	36

**SCHEDULE - PATCHING
NORTHBOUND LANES-URBAN**

LOCATION	PASSING LANE								DRIVING LANE							
	PATCH LENGTH	TYPE II 17"	CLASS B TYPE III 17"	TYPE IV 17"	DOWEL BARS 1 1/2"	SAW CUTS	WELDED WIRE REINF.	TIE BARS 3/4"	PATCH LENGTH	TYPE II 17"	CLASS B TYPE III 17"	TYPE IV 17"	DOWEL BARS 1 1/2"	SAW CUTS	WELDED WIRE REINF.	TIE BARS 3/4"
MILE MARKER	(FT)	SQ YD	SQ YD	SQ YD	EACH	FOOT	SQ YD	EACH	(FT)	SQ YD	SQ YD	SQ YD	EACH	FOOT	SQ YD	EACH
310.85	6	8			20	48			6	8			20	48		
310.90	50			67	20	136	67	25	50			67	20	136	67	25
311.43	6	8			20	48			6	8			20	48		
311.50	6	8			20	48			6	8			20	48		
311.74	6	8			20	48										
311.90	6	8			20	48										
312.10	6	8			20	48			6	8			20	48		
312.15	6	8			20	48			6	8			20	48		
312.30	6	8			20	48			6	8			20	48		
312.35	15		20		20	66	20		15		20		20	66	20	
312.48	6	8			20	48			7	10			20	51		
312.53	25			33	20	86	33	12	25			33	20	86	33	12
312.61	6	8			20	48			6	8			20	48		
312.96	6	8			20	48										
313.60	6	8			20	48										
313.80									6	8			20	48		
314.12	6	8			20	48			6	8			20	48		
TOTALS		104	20	100	320	912	120	37		82	20	100	260	771	120	37

**SCHEDULE - PATCHING
NORTHBOUND LANES - URBAN**

LOCATION	PASSING LANE					DRIVING LANE				
	PATCH LENGTH	CLASS B TYPE II 14"	DOWEL BARS 1 1/2"	SAW CUTS	TIE BARS 3/4"	PATCH LENGTH	CLASS B TYPE II 14"	DOWEL BARS 1 1/2"	SAW CUTS	TIE BARS 3/4"
MILE MARKER	(FT)	SQ YD	EACH	FOOT	EACH	(FT)	SQ YD	EACH	FOOT	EACH
316.20	6	8	20	48		6	8	20	48	
TOTALS		8	20	48			8	20	48	

**SCHEDULE - PATCHING
NORTHBOUND LANES-URBAN**

LOCATION	PASSING LANE							DRIVING LANE						
	PATCH LENGTH	CLASS B TYPE II 20"	TYPE III 20"	DOWEL BARS 1 1/2"	SAW CUTS	WELDED WIRE REINF.	TIE BARS 3/4"	PATCH LENGTH	CLASS B TYPE II 20"	TYPE III 20"	DOWEL BARS 1 1/2"	SAW CUTS	WELDED WIRE REINF.	TIE BARS 3/4"
MILE MARKER	(FT)	SQ YD	SQ YD	EACH	FOOT	SQ YD	EACH	(FT)	SQ YD	SQ YD	EACH	FOOT	SQ YD	EACH
316.98	6	8		20	48			6	8		20	48		
317.12	6			20	48			6			20	48		
317.53									8			48		
319.50	6	8		20	48				0					
319.80								12	0	16	20	61	16	
320.00	6	8		20	48				0					
320.20	8	11		20	52			6	8		20	48		
TOTALS		35		100	244				24	16	100	253	16	

**SCHEDULE - PATCHING
NORTHBOUND LANES - URBAN**

LOCATION	PASSING LANE					DRIVING LANE				
	PATCH LENGTH	CLASS A TYPE II 17"	PATCH REINF.	SAW CUTS	TIE BARS 3/4"	PATCH LENGTH	CLASS A TYPE II 17"	PATCH REINF.	SAW CUTS	TIE BARS 3/4"
MILE MARKER	FEET	SQ YD	SQ YD	FOOT	EACH	FEET	SQ YD	SQ YD	FOOT	EACH
321.40	6	8	8	36	42	6	8	8	36	42
321.48						6	8	8	36	42
322.60						6	8	8	36	42
322.90						6	8	8	36	42
323.10						6	8	8	36	42
323.30	6	8	8	36	42	6	8	8	36	42
323.40						6	8	8	36	42
323.50	6	8	8	36	42	6	8	8	36	42
TOTALS		24	24	108	126		64	64	288	336

**SCHEDULE - PATCHING
NORTHBOUND LANES - RURAL**

LOCATION	PASSING LANE					DRIVING LANE				
	PATCH LENGTH	CLASS A TYPE II 17"	PATCH REINF.	SAW CUTS	TIE BARS 3/4"	PATCH LENGTH	CLASS A TYPE II 17"	PATCH REINF.	SAW CUTS	TIE BARS 3/4"
MILE MARKER	FEET	SQ YD	SQ YD	FOOT	EACH	FEET	SQ YD	SQ YD	FOOT	EACH
324.10						6	8	8	36	42
324.13	6	8	8	36	42					
324.32						6	8	8	36	42
324.50						6	8	8	36	42
324.85						6	8	8	36	42
324.95						6	8	8	36	42
TOTALS		8	8	36	42		40	40	180	210

**SCHEDULE - PATCHING
SOUTHBOUND LANES - RURAL**

LOCATION	PASSING LANE					DRIVING LANE				
	PATCH LENGTH	CLASS A TYPE II 17"	PATCH REINF.	SAW CUTS	TIE BARS 3/4"	PATCH LENGTH	CLASS A TYPE II 17"	PATCH REINF.	SAW CUTS	TIE BARS 3/4"
MILE MARKER	FEET	SQ YD	SQ YD	FOOT	EACH	FEET	SQ YD	SQ YD	FOOT	EACH
325.05	6	8	8	36	42	6	8	8	36	42
324.95	6	8	8	36	42					
324.80	6	8	8	36	42					
324.55	6	8	8	36	42	6	8	8	36	42
324.20	6	8	8	36	42	6	8	8	36	42
324.15	6	8	8	36	42	6	8	8	36	42
TOTALS		48	48	216	252		32	32	144	168

**SCHEDULE - PATCHING
SOUTHBOUND LANES - URBAN**

LOCATION	PASSING LANE					DRIVING LANE				
	PATCH LENGTH	CLASS A TYPE II 17"	PATCH REINF.	SAW CUTS	TIE BARS 3/4"	PATCH LENGTH	CLASS A TYPE II 17"	PATCH REINF.	SAW CUTS	TIE BARS 3/4"
MILE MARKER	FEET	SQ YD	SQ YD	FOOT	EACH	FEET	SQ YD	SQ YD	FOOT	EACH
323.50						6	8	8	36	42
322.10	6	8	8	36	42	6	8	8	36	42
321.70	6	8	8	36	42	6	8	8	36	42
321.40						6	8	8	36	42
TOTALS		16	16	72	84		32	32	144	168

**SCHEDULE - PATCHING
SOUTHBOUND LANES-URBAN**

LOCATION	PASSING LANE				DRIVING LANE			
	PATCH LENGTH	CLASS B TYPE II 20"	DOWEL BARS 1 1/2"	SAW CUTS	PATCH LENGTH	CLASS B TYPE II 20"	DOWEL BARS 1 1/2"	SAW CUTS
MILE MARKER	(FT)	SQ YD	EACH	FOOT	(FT)	SQ YD	EACH	FOOT
320.50	6	8	20	48	6	8	20	48
TOTALS		8	20	48		8	20	48

SOUTHBOUND LANES-URBAN

LOCATION	PASSING LANE				DRIVING LANE			
	PATCH LENGTH	CLASS B TYPE II 14"	DOWEL BARS 1 1/2"	SAW CUTS	PATCH LENGTH	CLASS B TYPE II 14"	DOWEL BARS 1 1/2"	SAW CUTS
MILE MARKER	(FT)	SQ YD	EACH	FOOT	(FT)	SQ YD	EACH	FOOT
316.30					6	8	20	48
TOTALS		0	0	0		8	20	48

**SCHEDULE - PATCHING
SOUTHBOUND LANES - URBAN**

LOCATION	PASSING LANE					DRIVING LANE				
	PATCH LENGTH	CLASS A TYPE II 12"	PATCH REINF.	SAW CUTS	TIE BARS 3/4"	PATCH LENGTH	CLASS A TYPE II 12"	PATCH REINF.	SAW CUTS	TIE BARS 3/4"
MILE MARKER	FEET	SQ YD	SQ YD	FOOT	EACH	FEET	SQ YD	SQ YD	FOOT	EACH
315.95						6	8	8	36	42
TOTALS							8	8	36	42

**SCHEDULE - PATCHING
SOUTHBOUND LANES-URBAN**

LOCATION	PASSING LANE				DRIVING LANE			
	PATCH LENGTH	CLASS B TYPE II 17"	DOWEL BARS 1 1/2"	SAW CUTS	PATCH LENGTH	CLASS B TYPE II 17"	DOWEL BARS 1 1/2"	SAW CUTS
MILE MARKER	(FT)	SQ YD	EACH	FOOT	(FT)	SQ YD	EACH	FOOT
314.60	6	8	20	48	6		20	48
313.85	6	8	20	48	6	8	20	48
313.00	6	8	20	48	6	8	20	48
312.40	6	8	20	48	6	8	20	48
311.50	6	8	20	48			0	0
TOTALS		40	100	240		24	80	192

**SCHEDULE - PATCHING
SOUTHBOUND LANES - URBAN**

LOCATION	PASSING LANE				DRIVING LANE			
	PATCH LENGTH	CLASS C		SAW CUTS	PATCH LENGTH	CLASS C		SAW CUTS
TYPE II 20"		TYPE IV 20"	TYPE II 20"			TYPE IV 20"		
MILE MARKER	FEET	SQ YD	SQ YD	FOOT	FEET	SQ YD	SQ YD	FOOT
309.60	19		25	62				
307.70					6	8		36
306.80					8	11		40
306.75					8	11		40
306.30	6	8		36				
TOTALS		8	25	98	22	30		116

**SCHEDULE - PATCHING
SOUTHBOUND LANES - RURAL**

LOCATION	PASSING LANE				DRIVING LANE			
	PATCH LENGTH	CLASS C		SAW CUTS	PATCH LENGTH	CLASS C		SAW CUTS
TYPE II 20"		TYPE IV 20"	TYPE II 20"			TYPE IV 20"		
MILE MARKER	FEET	SQ YD	SQ YD	FOOT	FEET	SQ YD	SQ YD	FOOT
305.50					6	8		36
303.80					19		25	62
303.82					8	11		40
303.40	8	11		40				
303.00	6	8		36				
302.80	19		25	62				
302.20	6	8		36	6			
TOTALS		27	25	174	39	19	25	138

SCHEDULE - PAVEMENT MARKING
NORTHBOUND LANES - RURAL

LOCATION MILE POST	POLYUREA PAVEMENT MARKING TYPE I LINE 4" FEET		POLYUREA PAVEMENT MARKING TYPE I LINE 6" FEET
	YELLOW	WHITE	WHITE
	302.30	6	
302.31	6		10
302.70		6	10
302.88	6	6	10
303.34		6	10
303.50	6	6	10
303.97		6	10
304.10	6		10
324.10		6	10
324.13	6		10
324.32		6	10
324.50		6	10
324.85		6	10
324.95		6	10
SUBTOTAL	36	60	
TOTAL		96	140

SCHEDULE - PAVEMENT MARKING
NORTHBOUND LANES - URBAN

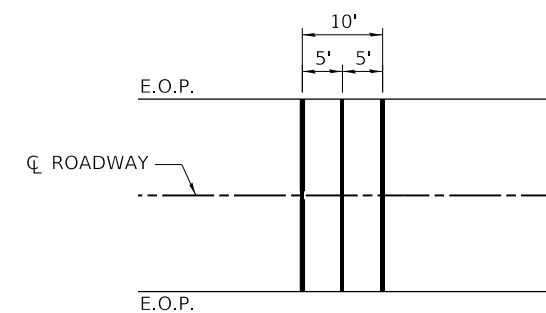
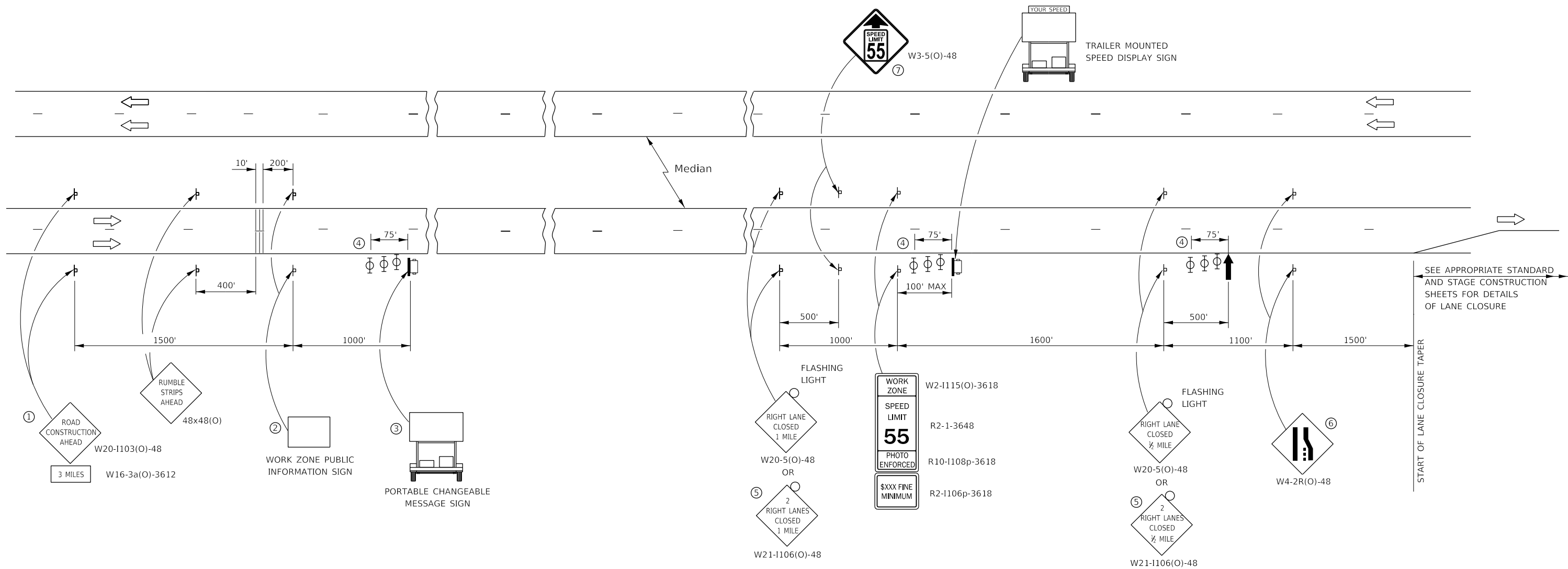
LOCATION MILE POST	POLYUREA PAVEMENT MARKING TYPE I LINE 4" FEET		POLYUREA PAVEMENT MARKING TYPE I LINE 6" FEET
	YELLOW	WHITE	WHITE
	306.10		6
306.11		6	10
306.80		6	10
307.03	6		10
307.10	6	6	10
307.12		6	10
307.17		6	10
307.19	25	25	10
307.20	6	6	10
307.30	6	6	10
307.38	18		10
307.47	6		10
307.48	6		10
307.50	15		10
307.52	20		10
307.60	6	6	10
309.20		6	10
310.85	6	6	10
310.90	50	50	10
311.43	6	6	10
311.50	6	6	10
311.74	6		10
311.90	6		10
312.10	6	6	10
312.15	6	6	10
312.30	6	6	10
312.35	15	15	10
312.48	6	7	10
312.53	25	25	10
312.61	6	6	10
312.96	6		10
313.60	6		10
313.80		6	10
314.12	6	6	10
316.20	6	6	10
316.98	6	6	10
317.12	6	6	10
317.53		6	10
319.50	6		10
319.80		12	10
320.00	6		10
320.20	8	6	10
321.40	6	6	10
321.48		6	10
322.60		6	10
322.90		6	10
323.10		6	10
323.30	6	6	10
323.40		6	10
323.50	6	6	10
SUBTOTAL	344	327	
TOTAL		671	500

SCHEDULE - PAVEMENT MARKING
SOUTHBOUND LANES - URBAN

LOCATION MILE POST	POLYUREA PAVEMENT MARKING TYPE I LINE 4" FEET		POLYUREA PAVEMENT MARKING TYPE I LINE 6" FEET
	YELLOW	WHITE	WHITE
	323.50		6
322.10	6	6	10
321.70	6	6	10
321.40		6	10
320.50	6	6	10
316.30		6	10
314.90	6	6	10
314.60	6	6	10
313.85	6	6	10
313.00	6	6	10
312.40	6	6	10
311.50	6		10
309.60	12		10
307.70		6	10
306.80		8	10
306.75		8	10
306.30	6		10
SUBTOTAL	72	88	
TOTAL		160	170

SCHEDULE - PAVEMENT MARKING
SOUTHBOUND LANES - RURAL

LOCATION MILE POST	POLYUREA PAVEMENT MARKING TYPE I LINE 4" FEET		POLYUREA PAVEMENT MARKING TYPE I LINE 6" FEET
	YELLOW	WHITE	WHITE
	325.05	6	6
324.95	6		10
324.80	6		10
324.55	6	6	10
324.20	6	6	10
324.15	6	6	10
305.50		6	10
303.80		12	10
303.82		8	10
303.40	8		10
303.00	6		10
302.80	12		10
302.20	6	6	10
SUBTOTAL	68	56	
TOTAL		124	130



TEMPORARY RUMBLE STRIP

- ① THE ROAD CONSTRUCTION AHEAD SIGN SHALL BE LOCATED 3 MILES IN ADVANCE OF THE PROJECT LIMITS.
- ② THE MESSAGE AND SIZE OF THE WORK ZONE PUBLIC INFORMATION SIGN SHALL BE AS SPECIFIED BY THE DEPARTMENT.
- ③ TO BE PLACED IN THE MEDIAN WHEN FEASIBLE. THE MESSAGE BOARD SHALL BE USED TO DISPLAY STATUS OF LANES WITHIN THE PROJECT. THE PRIMARY MESSAGES SHALL BE:
"RIGHT LANE CLOSED" / " x MILES AHEAD"
"LEFT LANE CLOSED" / " x MILES AHEAD"
"ALL LANES OPEN"
- ④ THREE, TYPE II BARRICADES, DRUMS, OR VERTICAL BARRICADES AT 25' CENTERS.
- ⑤ THIS SIGN SHALL BE USED WHEN 2 LANES ARE CLOSED.
- ⑥ WHEN THE LEFT LANE IS CLOSED, SWITCH THESE TWO SIGNS AND THE DIRECTION OF THE MERGE ARROW.
- ⑦ THIS SIGN SHALL ONLY BE USED IF THE EXISTING SPEED LIMIT IS GREATER THAN 65 MPH.

- ↑ ARROW BOARD
- ☐ PORTABLE CHANGEABLE MESSAGE SIGN
- ⊥ SIGN
- ⊕ TYPE II BARRICADE, DRUM, OR VERTICAL BARRICADE WITH MONODIRECTIONAL FLASHING LIGHT
- ≡ TEMPORARY RUMBLE STRIPS (SEE SPECIAL PROVISION)

GENERAL NOTE:

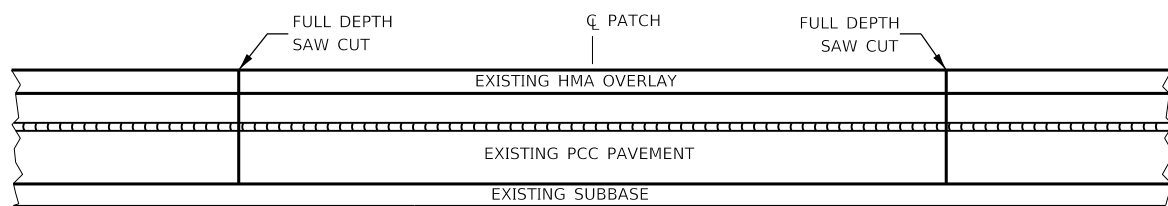
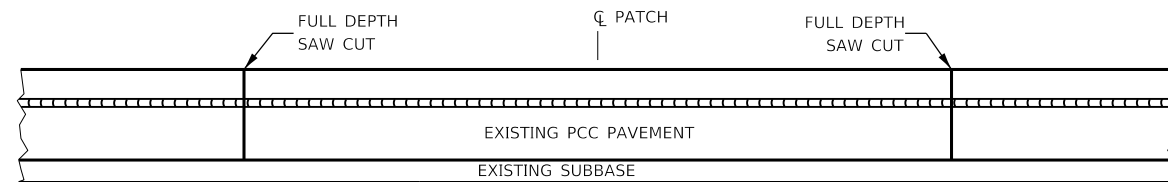
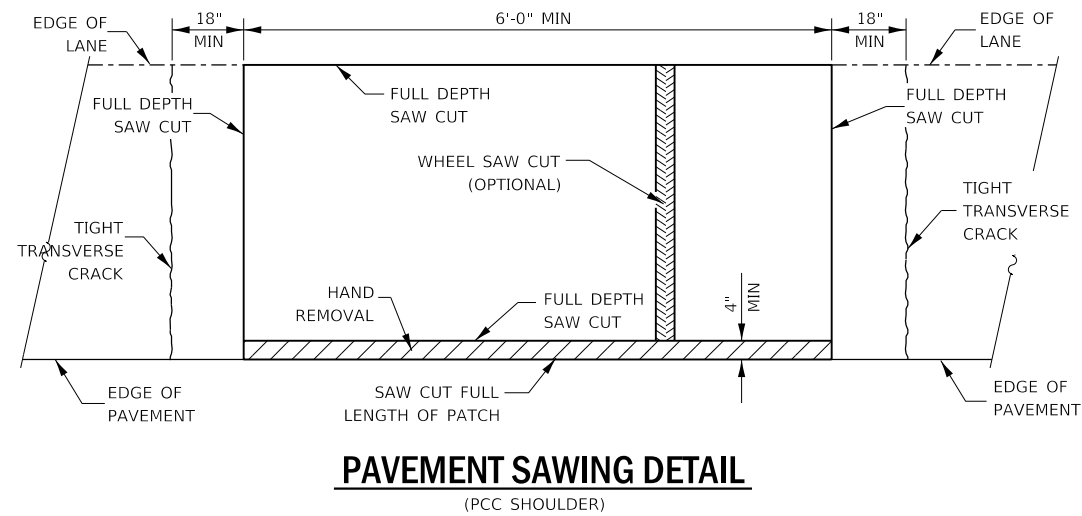
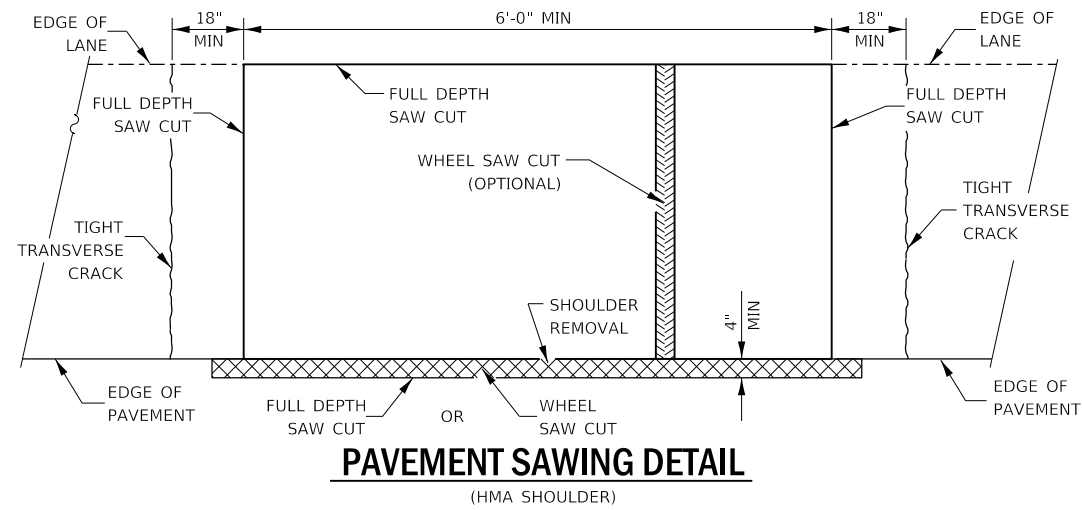
THIS STANDARD IS USED WHERE AT ANY TIME A LANE IS CLOSED ON A FREEWAY/EXPRESSWAY.

WHEN THE LEFT LANE IS CLOSED, LEFT LANE CLOSED SIGNS SHALL BE SUBSTITUTED FOR THE RIGHT LANE CLOSED SIGNS.

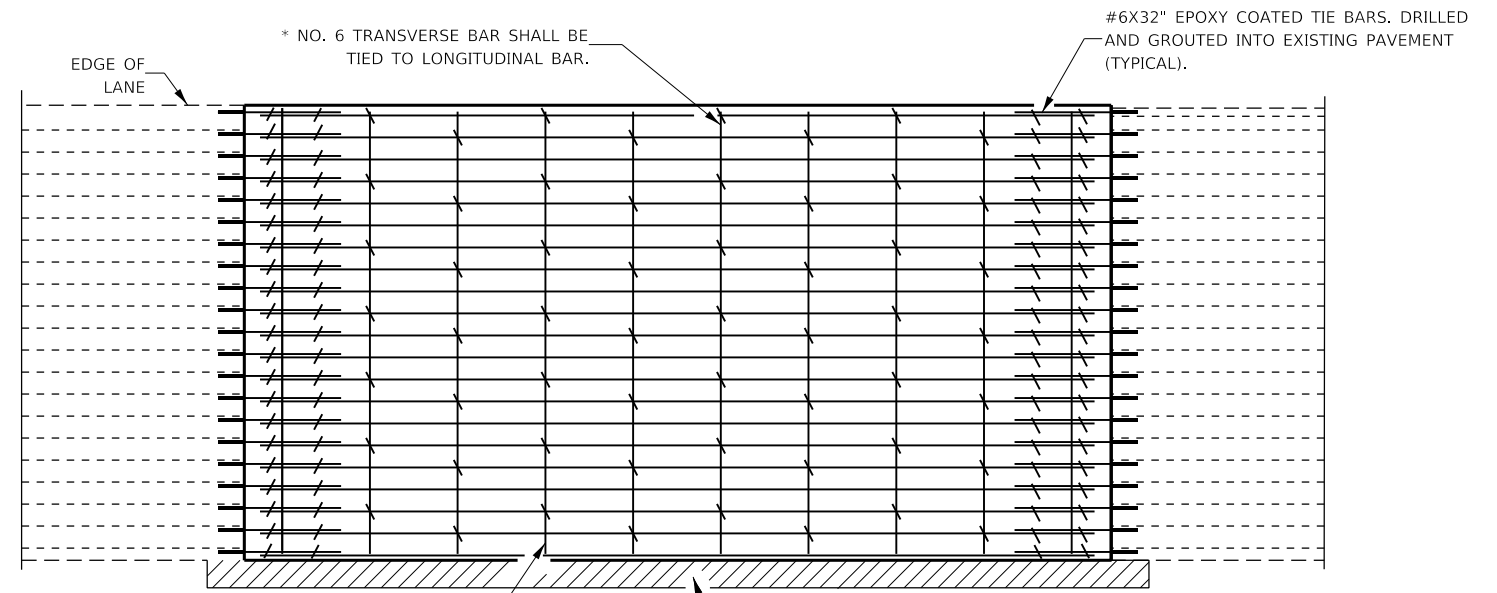
THE FIRST THREE SIGNS, RUMBLE STRIPS AND THE MESSAGE BOARD ARE STATIONARY. THE OTHER SIGNS AND ARROWBOARDS SHALL BE MOVED AS NECESSARY TO MAINTAIN THE REQUIRED DISTANCE FROM THE START OF THE LANE CLOSURE TAPER(S).

SEE SPECIAL PROVISIONS.

FILE NAME =	USER NAME = woodyetjp	DESIGNED -	REVISED -	STATE OF ILLINOIS DEPARTMENT OF TRANSPORTATION	TRAFFIC CONTROL AND PROTECTION, STANDARD 701400	F.A.I. RTE.	SECTION	COUNTY	TOTAL SHEETS	SHEET NO.
pw:\IL084EBID\INTEG\ifnotes.gov\PWIDOT\Documents\DOT Offices\District 3\Projects\D366J32\CADData\66J32-Details.dgn	DRAWN -	REVISED -	57			D3 L57 PP 2019-1	*	26	20	
Default	PLOT SCALE = 100.0000 "/in.	CHECKED -	REVISED -			*IROQUOIS AND KANKAKEE		CONTRACT NO. 66J32		
	PLOT DATE = 3/24/2018	DATE -	REVISED -			SCALE:	SHEET 1 OF 1 SHEETS	STA.	TO STA.	ILLINOIS FED. AID PROJECT

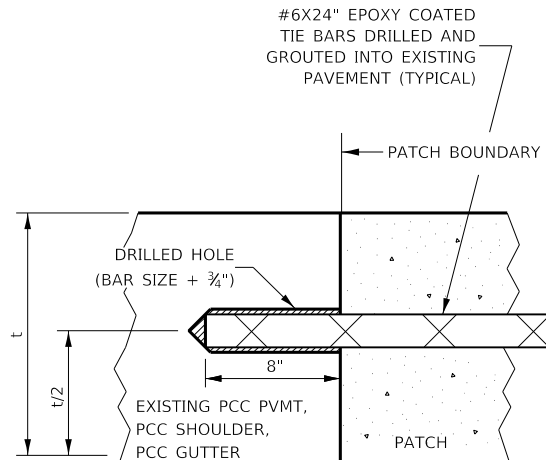


PAVEMENT SAWING DETAIL FOR CLASS A PATCHING (CRC PAVEMENT)



TRANSVERSE REBAR SHALL EXTEND TO OUTER LONGITUDINAL REBAR WHILE PROVIDING A MINIMUM 3" CLEARANCE FROM EXISTING PAVEMENT EDGE

PAVEMENT REINFORCEMENT DETAIL



LONGITUDINAL CONSTRUCTION JOINT

PATCHES MORE THAN 20' IN LENGTH SHALL BE TIED TO ADJACENT PAVEMENT, PCC SHOULDERS OR PCC CURB AND GUTTER WITH #6x24" EPOXY COATED TIE BARS AT 36" CENTERS.

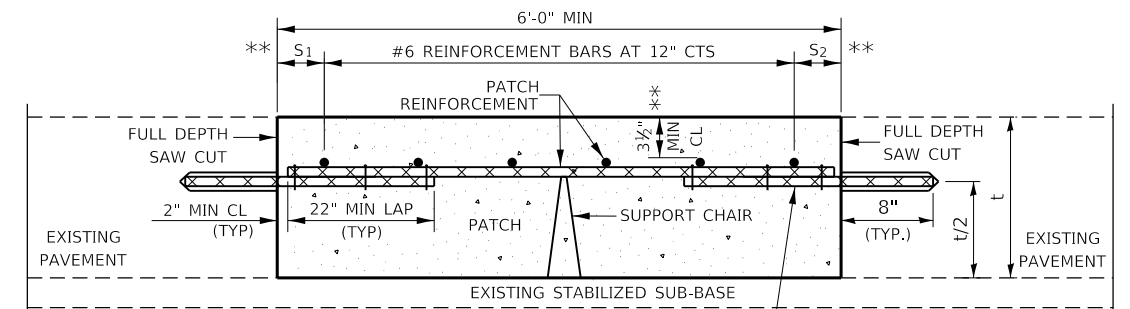
NOTES:

EXISTING LONGITUDINAL REINFORCEMENT SPACING; $\pm 6\frac{1}{2}$ "

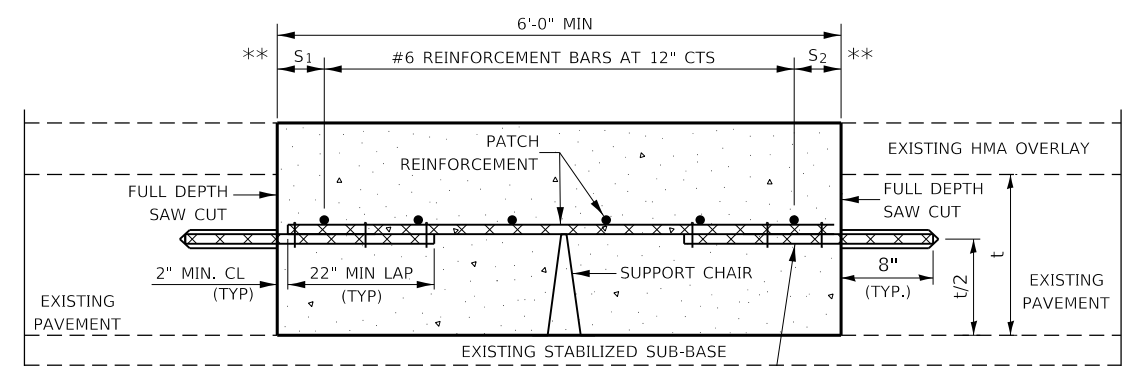
SPACING OF NEW LONGITUDINAL REINFORCEMENT AND NEW LONGITUDINAL TIE BARS SHALL MATCH SPACING OF EXISTING REINFORCEMENT AND SHALL BE TIED TOGETHER WITH A MINIMUM OF TWO TIES PER BAR.

* EVERY THIRD INTERSECTION MUST BE TIED, WHEN THE MINIMUM CLEARANCE CANNOT BE OBTAINED WITH THE TRANSVERSE REBAR ON TOP, THEN THE TRANSVERSE REBAR SHALL BE TIED TO THE BOTTOM OF THE LONGITUDINAL REBAR.

** VARIABLES WHERE S₁ AND S₂ ARE 2½" MIN. AND 12" MAX.



WITHOUT HMA OVERLAY



WITH HMA OVERLAY

PATCHING DETAIL FOR CLASS A PATCHING (CRC PAVEMENT)

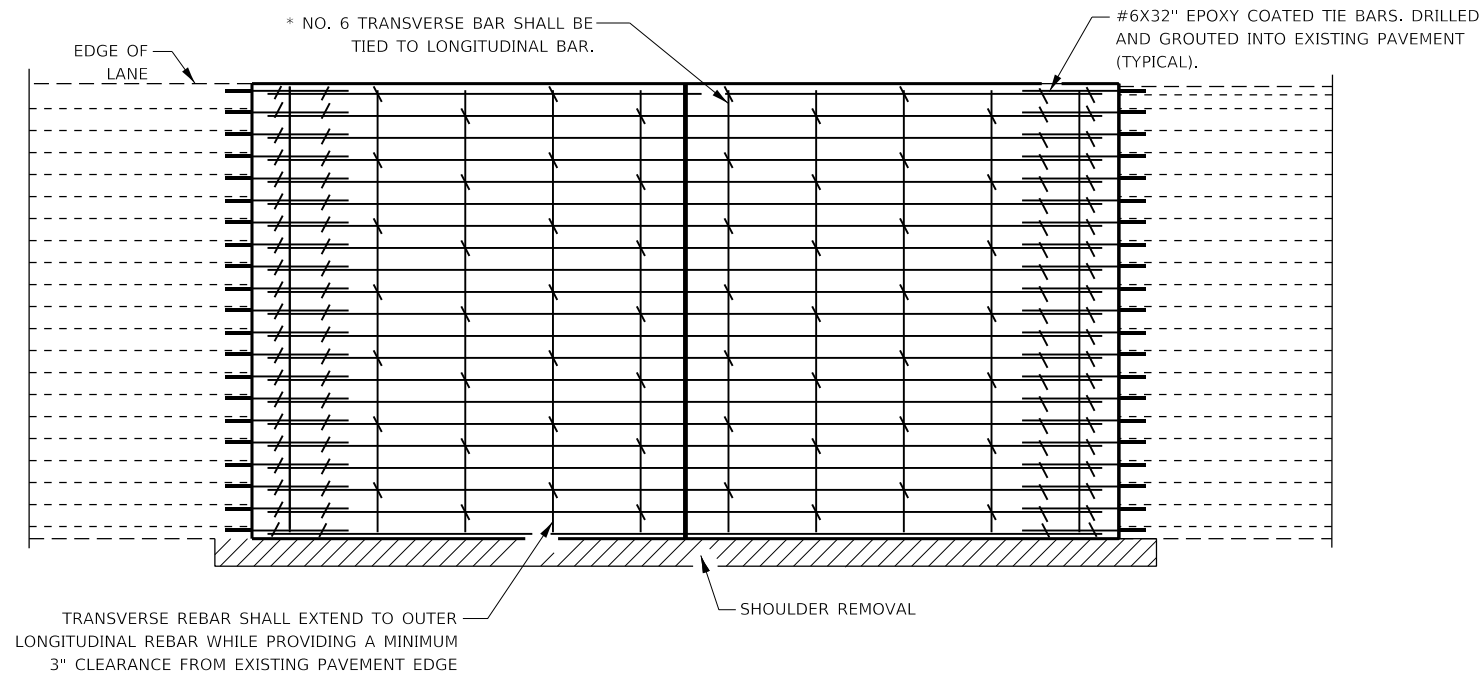
FILE NAME =	USER NAME = woodyetjp	DESIGNED -	REVISED -
pw:\IL084EBID\INTEG\ifnotes.gov\PWIDOT\Documents\DOT Offices\District 3\Projects\D366J32\CADData\66J32-Details.dgn		DRAWN -	REVISED -
	PLOT SCALE = 100.0000' / in.	CHECKED -	REVISED -
Default	PLOT DATE = 3/26/2018	DATE -	REVISED -

STATE OF ILLINOIS
DEPARTMENT OF TRANSPORTATION

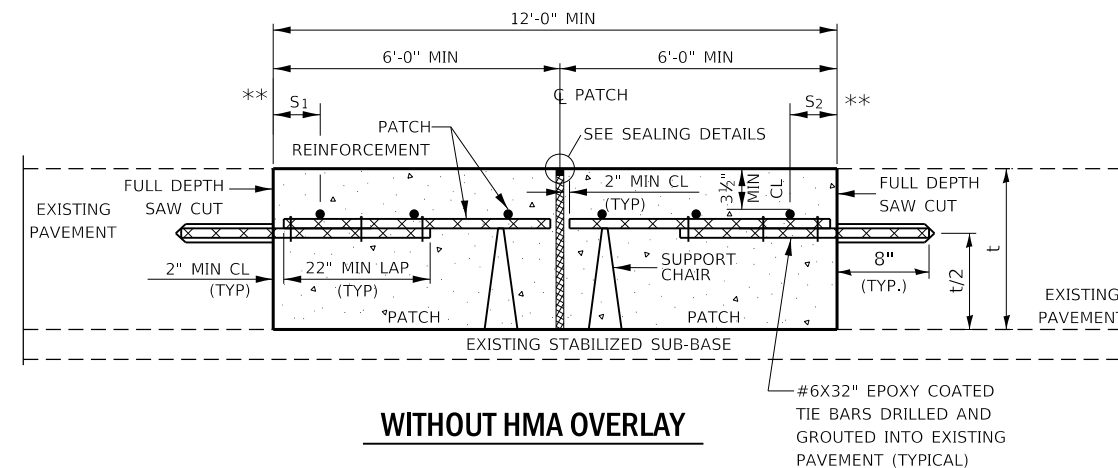
CLASS A PATCHING DETAILS

SCALE: SHEET 1 OF 2 SHEETS STA. TO STA.

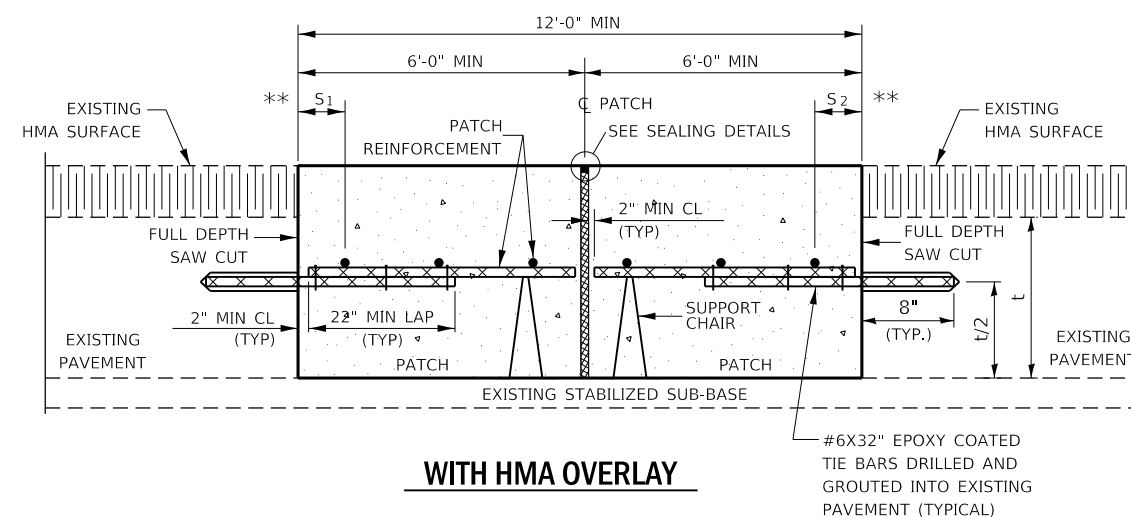
F.A.I. RTE.	SECTION	COUNTY	TOTAL SHEETS	SHEET NO.
57	D3 L57 PP 2019-1		26	21
*IROQUOIS AND KANKAKEE			CONTRACT NO. 66J32	
ILLINOIS FED. AID PROJECT				



PAVEMENT REINFORCEMENT DETAIL

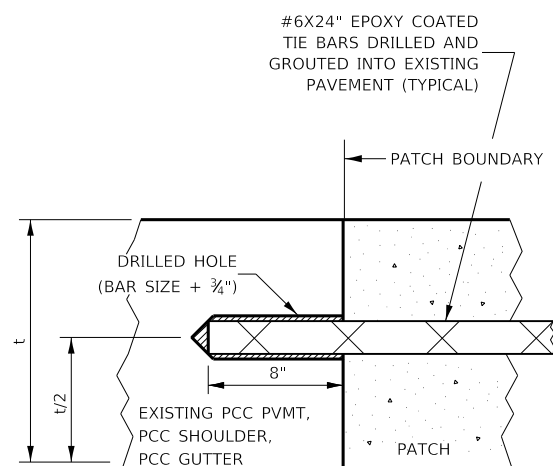


WITHOUT HMA OVERLAY



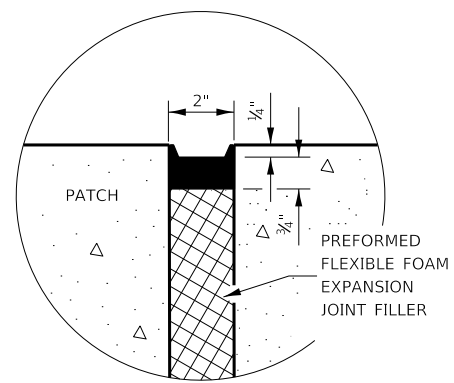
WITH HMA OVERLAY

CLASS A PATCH WITH EXPANSION JOINT

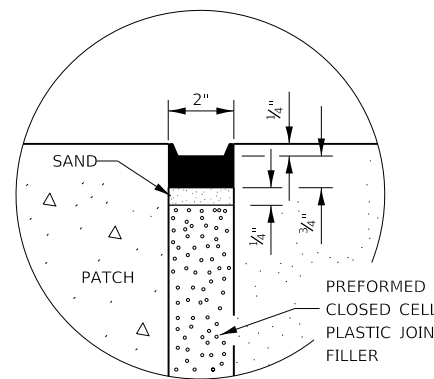


LONGITUDINAL CONSTRUCTION JOINT

PATCHES MORE THAN 20' IN LENGTH SHALL BE TIED TO ADJACENT PAVEMENT, PCC SHOULDERS OR PCC CURB AND GUTTER WITH #6X24" EPOXY COATED TIE BARS AT 36" CENTERS.



SEALING DETAIL



SEALING DETAIL

NOTES:

EXISTING LONGITUDINAL REINFORCEMENT SPACING; $\pm 6\frac{1}{2}$ ".

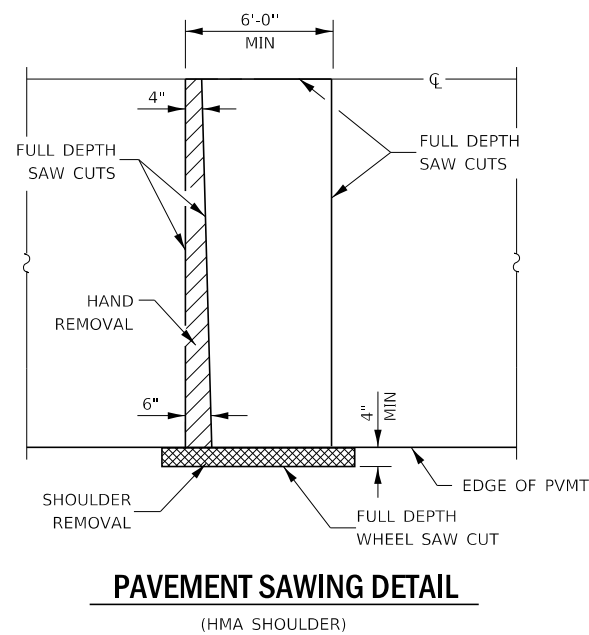
SPACING OF NEW LONGITUDINAL REINFORCEMENT AND NEW LONGITUDINAL TIE BARS SHALL MATCH SPACING OF EXISTING REINFORCEMENT AND SHALL BE TIED TOGETHER WITH A MINIMUM OF TWO TIES PER BAR.

SUPPORT CHAIRS SHALL BE REQUIRED WHENEVER PATCH LENGTH EXCEEDS 6'-0"

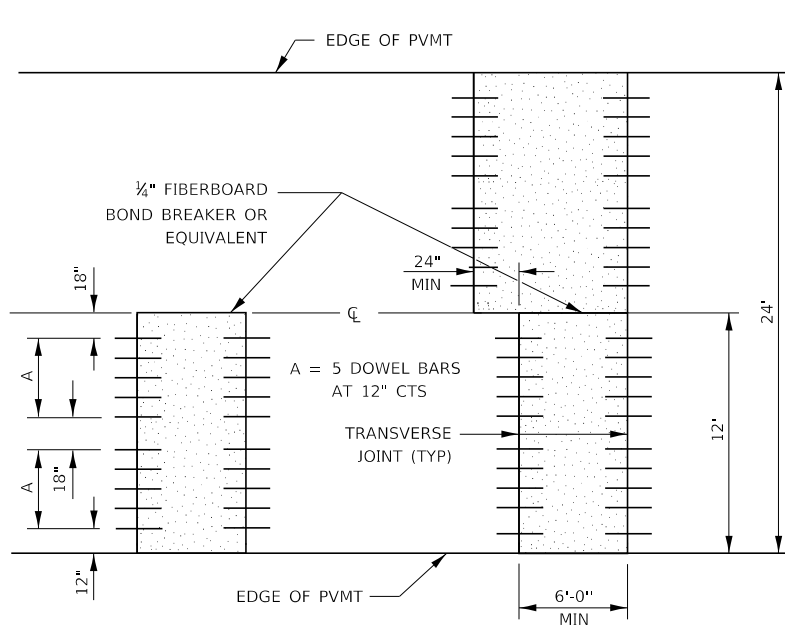
* EVERY THIRD INTERSECTION MUST BE TIED. WHEN THE MINIMUM CLEARANCE CANNOT BE OBTAINED WITH THE TRANSVERSE REBAR ON TOP, THEN THE TRANSVERSE REBAR SHALL BE TIED TO THE BOTTOM OF THE LONGITUDINAL REBAR.

** VARIABLES WHERE S_1 AND S_2 ARE $2\frac{1}{2}$ " MIN. AND 12" MAX.

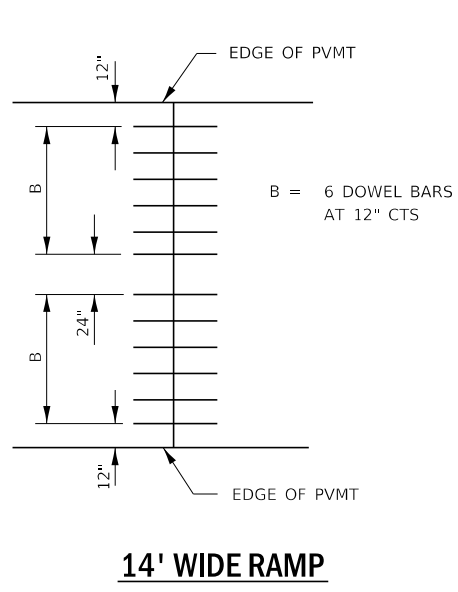
FILE NAME =	USER NAME = woodyetjp	DESIGNED -	REVISED -	STATE OF ILLINOIS DEPARTMENT OF TRANSPORTATION	CLASS A PATCHING DETAILS			F.A.I. RTE.	SECTION	COUNTY	TOTAL SHEETS	SHEET NO.
pw:\IL084EBID\INTEG\ifnotes.gov\PWIDOT\Documents\DOT Offices\District 3\Projects\D366J32\CADDData\66J32-Details.dgn	DRAWN -	REVISED -	REVISED -					57	D3 I-57 PP 2019-1	*	26	22
Default	PLOT SCALE = 100.0000' / in.	CHECKED -	REVISED -					*IROQUOIS AND KANKAKEE			CONTRACT NO. 66J32	
	PLOT DATE = 3/26/2018	DATE -	REVISED -					SCALE:	SHEET 2 OF 2 SHEETS	STA.	TO STA.	ILLINOIS FED. AID PROJECT



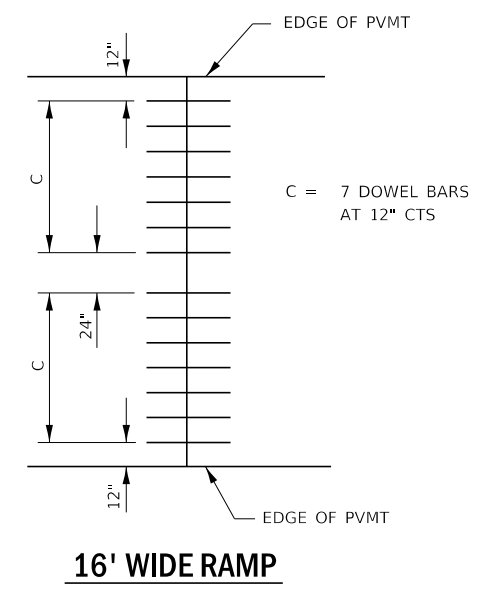
PAVEMENT SAWING DETAIL
(HMA SHOULDER)



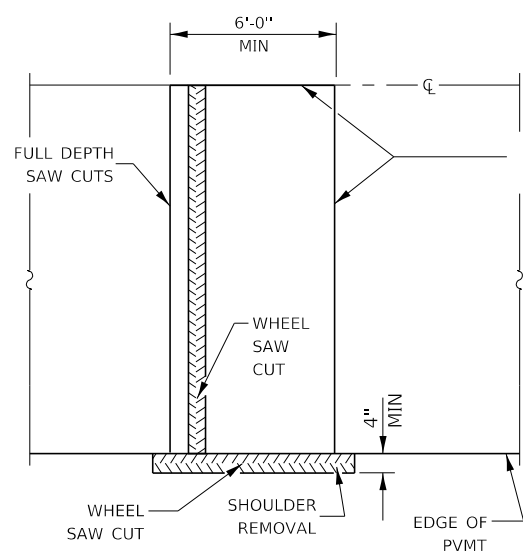
12' WIDE LANES



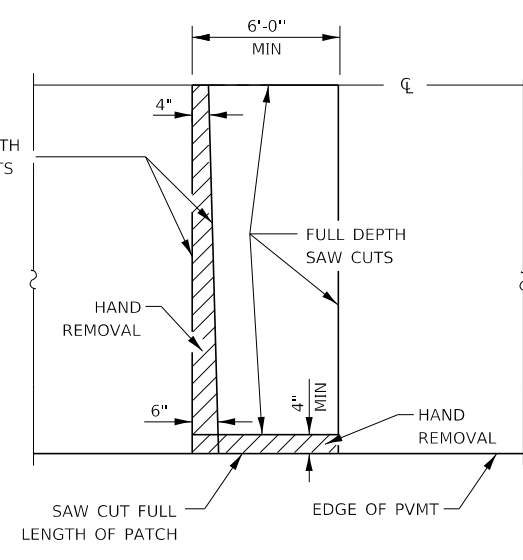
14' WIDE RAMP



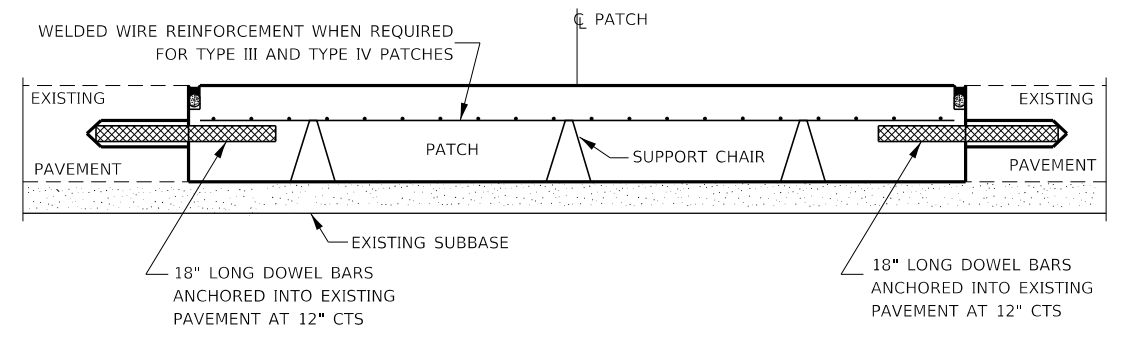
16' WIDE RAMP



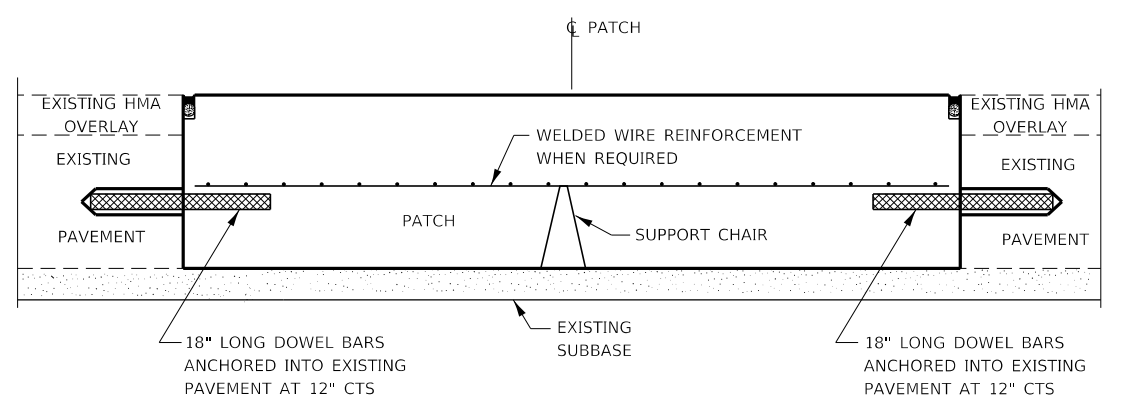
ALTERNATE SAWING DETAIL
(HMA SHOULDER)



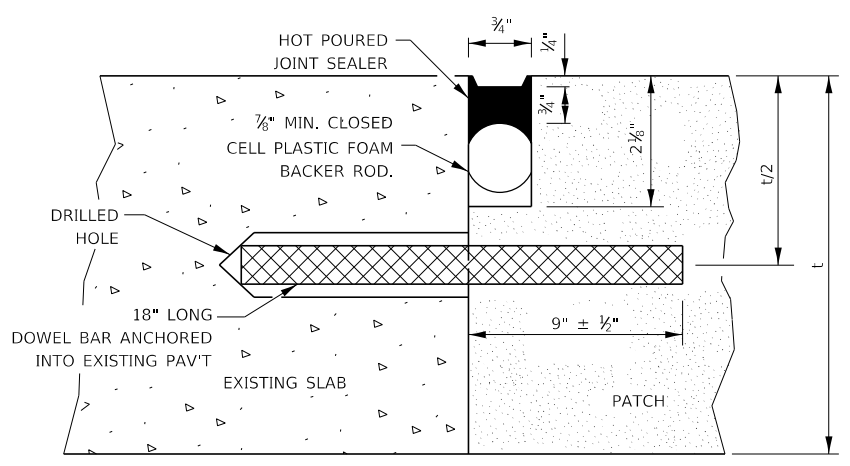
PAVEMENT SAWING DETAIL
(PCC SHOULDER)



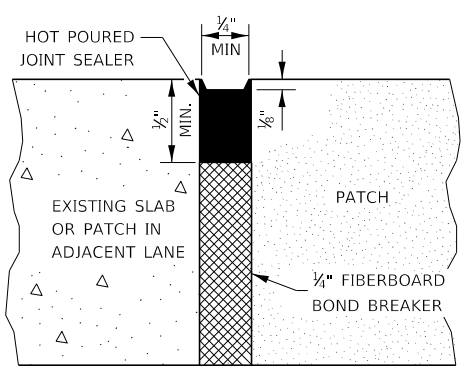
PATCHING WITHOUT HMA OVERLAY



PATCHING WITH HMA OVERLAY



TRANSVERSE JOINT

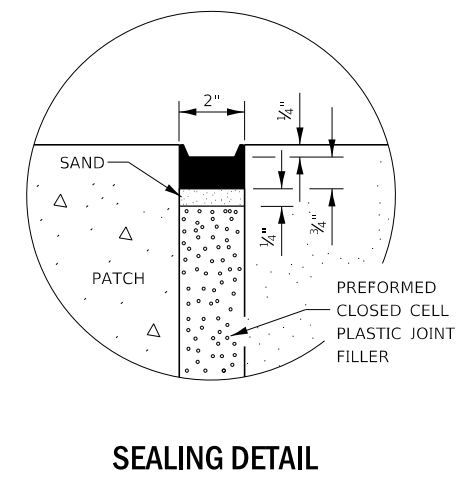
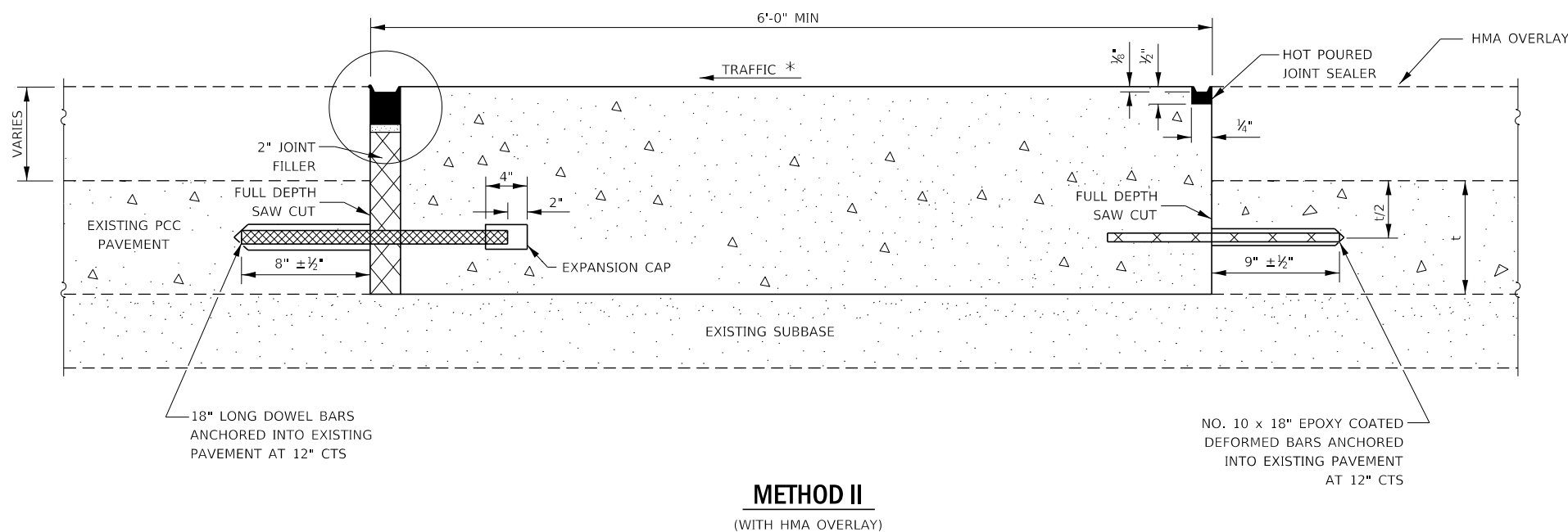
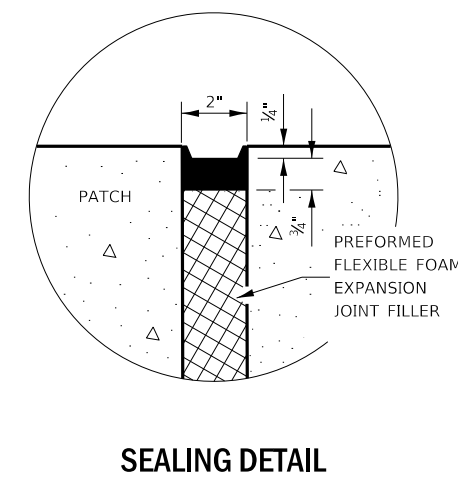
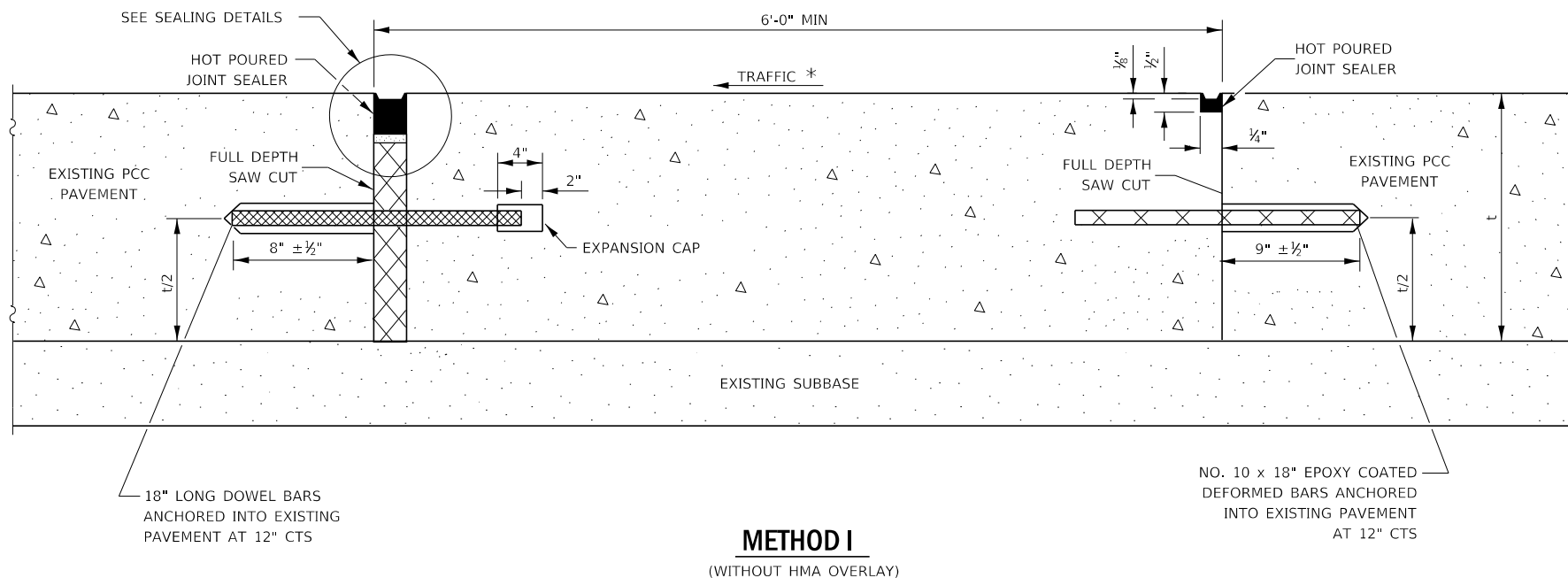


CENTERLINE JOINT

DOWEL BAR TABLE		
PAVEMENT THICKNESS	DOWEL BAR DIAMETER	HOLE DIAMETER
8" OR GREATER	1 1/2"	1 3/8"
7" THRU 7.99"	1 1/4"	1 3/16"
LESS THAN 7"	1"	1 1/8"

GENERAL NOTES

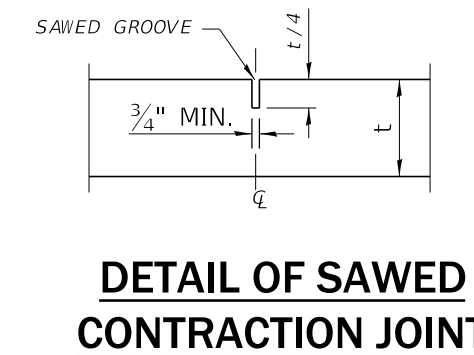
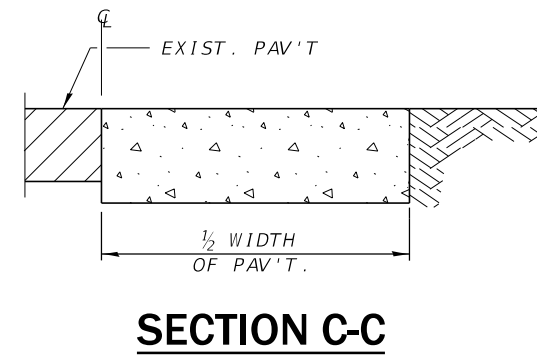
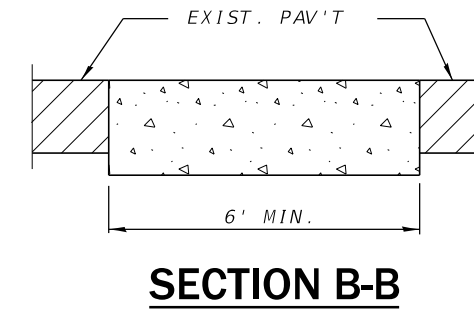
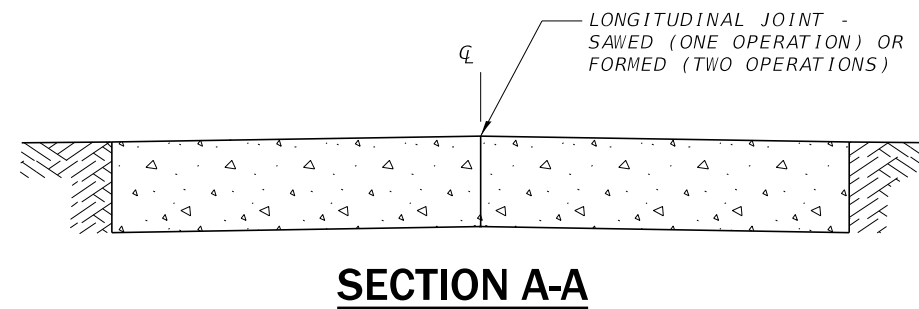
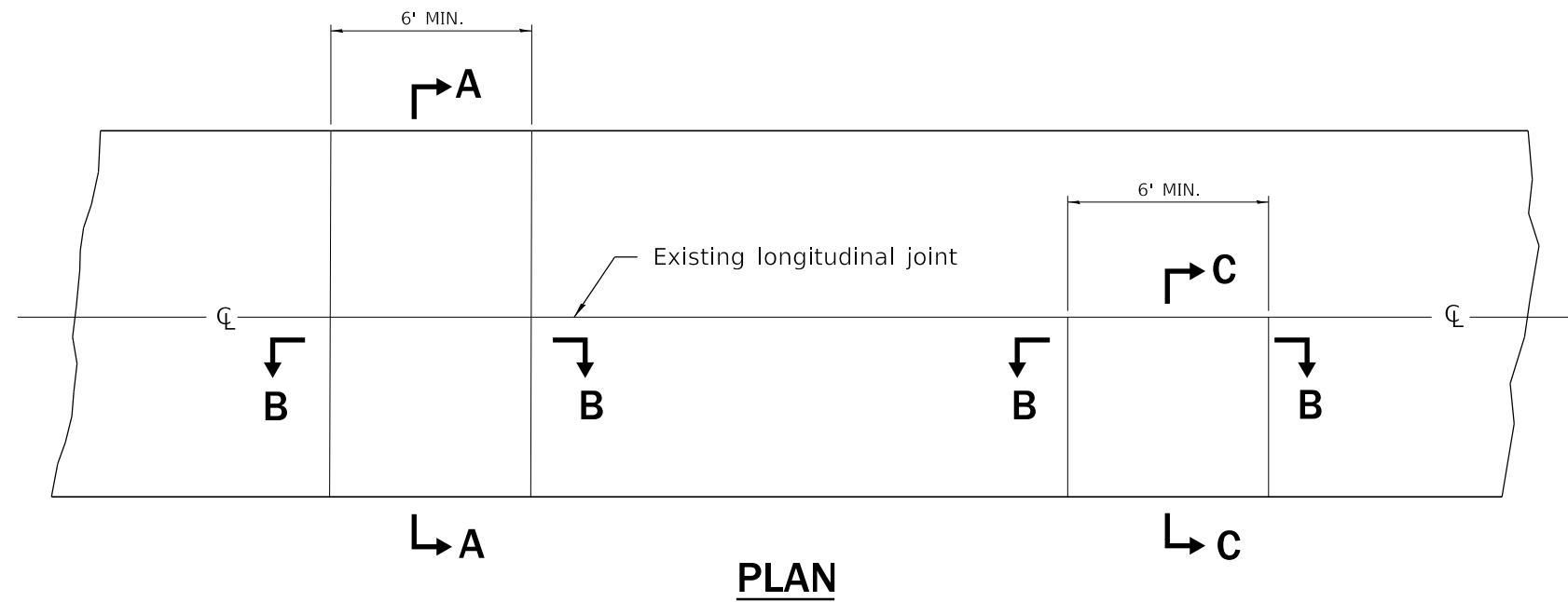
THE TRANSVERSE JOINTS FOR CLASS B PATCHES SHALL ALIGN WITH JOINTS OR CRACKS IN THE ADJACENT LANE WHENEVER POSSIBLE.
SEE STANDARD 420701 FOR DETAILS OF PAVEMENT WELDED WIRE REINFORCEMENT.



NOTE

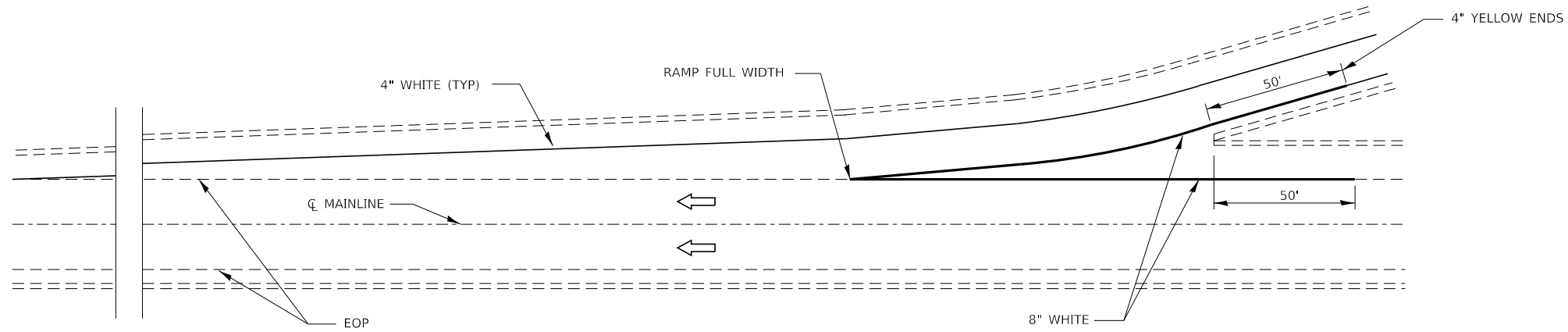
* WHEN RE-ESTABLISHING A TRANSVERSE EXPANSION JOINT ON A TWO-WAY ROAD, REVERSE THE ORIENTATION OF THE DOWEL BARS WITH RESPECT TO TRAFFIC FOR ONE OF THE PATCHES SUCH THAT THE JOINT WILL BE CONTINUOUS ACROSS BOTH LANES.

FILE NAME =	USER NAME = woodshank1	DESIGNED -	REVISED -	STATE OF ILLINOIS DEPARTMENT OF TRANSPORTATION	CLASS B PATCHING DETAILS			F.A.I. RTE.	SECTION	COUNTY	TOTAL SHEETS	SHEET NO.
pw:\IL084EB\INTEG\Illinois.gov\PWIDOT\Documents\DOT Offices\District 3\Projects\D366J32\CADData\66J32-Details.dgn	DRAWN -	REVISED -	REVISED -					57	D3 L57 PP 2019-1	*	26	24
Default	PLOT SCALE = 100,0000 /in.	CHECKED -	REVISED -					*IROQUOIS AND KANKAKEE		CONTRACT NO. 66J32		
	PLOT DATE = 3/24/2018	DATE -	REVISED -					SCALE:	SHEET 2 OF 2 SHEETS	STA.	TO STA.	ILLINOIS FED. AID PROJECT

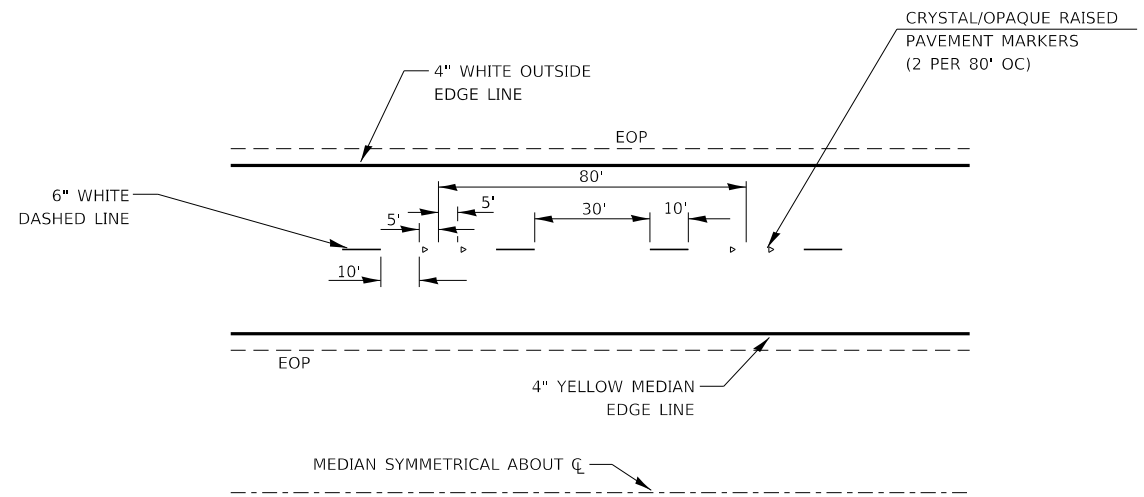


NOTE:
 LONGITUDINAL JOINTS SHALL BE AS DETAILED ON STANDARD 420001, EXCEPT
 TIE BARS ARE NOT REQUIRED FOR PATCHES 20'-0" (6.0 M) OR LESS IN LENGTH.

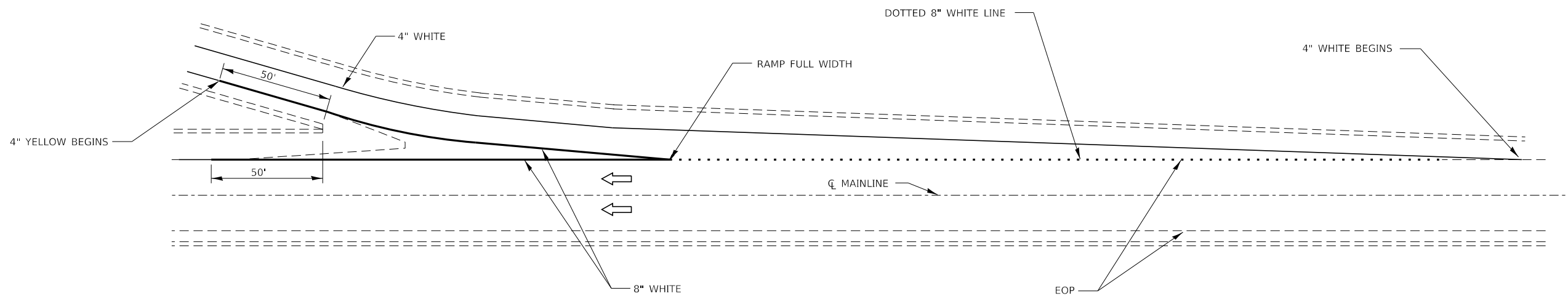
FILE NAME =	USER NAME = woodshank1	DESIGNED -	REVISED -	STATE OF ILLINOIS DEPARTMENT OF TRANSPORTATION	CLASS C PATCHING DETAILS			F.A.I. RTE.	SECTION	COUNTY	TOTAL SHEETS	SHEET NO.
pw:\IL084EB\INTEG\Illinois.gov\PWIDOT\Documents\DOT Offices\District 3\Projects\D366J32\CADDData\66J32-Details.dgn	DRAWN -	REVIS	REVIS					57	D3 L57 PP 2019-1	*	26	25
Default	PLOT SCALE = 100.0000' / in.	CHECKED -	REVIS		SCALE: SHEET 1 OF 1 SHEETS STA. TO STA.			*IROQUOIS AND KANKAKEE CONTRACT NO. 66J32				
	PLOT DATE = 3/24/2018	DATE -	REVIS					ILLINOIS FED. AID PROJECT				



TYPICAL PAVEMENT MARKING FOR ENTRANCE RAMP TERMINALS



TYPICAL PAVEMENT MARKINGS



TYPICAL PAVEMENT MARKINGS FOR EXIT RAMP TERMINALS

FILE NAME =	USER NAME = woodshankit	DESIGNED -	REVISED -
pw\01\084EB\INTEG\Illinois.gov\PWIDOT\Documents\DOT Offices\District 3\Projects\D366J32\CADDData\66J32-Details.dgn		DRAWN -	REVISED -
Default	PLOT SCALE = 100.0000' / in.	CHECKED -	REVISED -
	PLOT DATE = 3/24/2018	DATE -	REVISED -

**STATE OF ILLINOIS
DEPARTMENT OF TRANSPORTATION**

PAVEMENT MARKING DETAILS

SCALE: SHEET 1 OF 1 SHEETS STA. TO STA.

F.A.I. RTE.	SECTION	COUNTY	TOTAL SHEETS	SHEET NO.
57	D3 L57 PP 2019-1	*	26	26
*ROQUOIS AND KANKAKEE			CONTRACT NO. 66J32	
ILLINOIS FED. AID PROJECT				