

CODE NO.	ITEM	UNIT	TOTAL QUANTITY	FEDERAL FUNDS	FEDERAL FUNDS
				0021	0021
				ROADWAY	TRAFFIC SIGNALS
				SAFETY FUNDS	90% FEDERAL
90% FEDERAL	7.5% STATE				
10% STATE	2.5% PEORIA CO				
87502490	TRAFFIC SIGNAL POST, GALVANIZED STEEL 15 FT.	EACH	1		1
87700170	STEEL MAST ARM ASSEMBLY AND POLE, 26 FT.	EACH	1		1
87703030	STEEL COMBINATION MAST ARM ASSEMBLY AND POLE 60 FT.	EACH	1		1
87703060	STEEL COMBINATION MAST ARM ASSEMBLY AND POLE 65 FT.	EACH	1		1
87800100	CONCRETE FOUNDATION, TYPE A	FOOT	3		3
87800200	CONCRETE FOUNDATION, TYPE D	FOOT	3.5		3.5
87800400	CONCRETE FOUNDATION, TYPE E 30-INCH DIAMETER	FOOT	10		10
87800420	CONCRETE FOUNDATION, TYPE E 42-INCH DIAMETER	FOOT	51		51
88040090	SIGNAL HEAD, POLYCARBONATE, LED, 1-FACE, 3-SECTION, MAST-ARM MOUNTED	EACH	4		4
88040110	SIGNAL HEAD, POLYCARBONATE, LED, 1-FACE, 4-SECTION, BRACKET MOUNTED	EACH	7		7
88040120	SIGNAL HEAD, POLYCARBONATE, LED, 1-FACE, 4-SECTION, MAST-ARM MOUNTED	EACH	3		3
88200510	TRAFFIC SIGNAL BACKPLATE, RETROREFLECTIVE	EACH	14		14
88500100	INDUCTIVE LOOP DETECTOR	EACH	17		17
88600100	DETECTOR LOOP, TYPE I	FOOT	1237.5		1237.5
X0323071	SPARE FULL ACTUATED CONTROLLER, SPECIAL	EACH	1		1
X0323898	CLOSED CIRCUIT TELEVISION DOME CAMERA	EACH	1		1
X0325922	CELLULAR MODEM	EACH	1		1
X0326812	CAT 5 ETHERNET CABLE	FOOT	248.5		248.5
X0327980	PAVEMENT MARKING REMOVAL - WATER BLASTING	SQ FT	64	64	
X1400113	LUMINAIRE, LED, HORIZONTAL MOUNT, MEDIUM WATTAGE	EACH	4		4
X6010005	SHOULDER REMOVAL AND REPLACEMENT FOR ELECTRICAL WORK	FOOT	40		40
X6320100	GUARDRAIL REMOVAL SPECIAL	FOOT	493	493	
X8110458	CONDUIT ATTACHED TO STRUCTURE, 2" DIA., STAINLESS STEEL	FOOT	238		238
X8570226	FULL-ACTUATED CONTROLLER AND TYPE IV CABINET, SPECIAL	EACH	1		1
X8730306	ELECTRIC CABLE IN CONDUIT, LEAD-IN, NO. 12, 1 PAIR	FOOT	9606		9606
X8860400	DETECTOR LOOP, SPECIAL	FOOT	292		292
Z0033068	TRAFFIC SIGNAL BATTERY BACKUP SYSTEM	EACH	1		1
X63201000	CONSTRUCTION LAYOUT	L SUM	1		1

27



MODEL: D:\dwg\180521\180521.DWG USER: SLOWINSKIN DATE: 3/29/2018

USER NAME = slowinskin	DESIGNED -	REVISED -
	DRAWN -	REVISED -
PLOT SCALE = 100.000' / in.	CHECKED -	REVISED -
PLOT DATE = 3/29/2018	DATE -	REVISED -

STATE OF ILLINOIS
DEPARTMENT OF TRANSPORTATION

SUMMARY OF QUANTITIES

F.A.P. RTE.	SECTION	COUNTY	TOTAL SHEETS	SHEET NO.
31Z	45TS-1	PEORIA	37	4
CONTRACT NO. 68E03				

ILLINOIS FED. AID PROJECT

MODIFIED URETHANE PAVEMENT MARKING - LINE 4"

LOCATION STATION TO STATION		LENGTH (FOOT)	WHITE SOLID LINE (FOOT)
US 24 (Main-line)			
332+38.93	TO	333+71.12	132.7
334+87.44	TO	335+40.07	83.1
SUB - TOTAL			216.1
TOTAL			216

MODIFIED URETHANE PAVEMENT MARKING - LINE 8"

LOCATION STATION TO STATION		LENGTH (FOOT)	WHITE SOLID LINE (FOOT)	WHITE MINI-SKIP DASH (FOOT)
US 24 (Main-line)				
332+38.93	TO	333+71.12	132.2	33.0
333+71.12	TO	335+15.64	144.5	145.0
SUB - TOTAL			145.0	33.0
TOTAL			178	

MODIFIED URETHANE PAVEMENT MARKING - LINE 12"

LOCATION STATION TO STATION		STOP BAR (FOOT)
US 24 (Main-line)		
334+97.60	TO	334+97.60
335+2.19	TO	335+2.19
336+15.28	TO	336+15.28
TOTAL		91

NOTE:
TRAFFIC SIGNAL SCHEDULE OF QUANTITIES IN SHEET 26

MODIFIED URETHANE PAVEMENT MARKING - LETTERS & SYMBOLS

LOCATION STATION TO STATION	LEFT TURN ARROW (SQFT)	QUANTITY	TOTAL SQ FT
US 24 (Main-line)			
333+80.89	TO	334+92.44	8.8
TOTAL		2	17.6

PAVEMENT MARKING REM - WATER BLASTING

LOCATION STATION TO STATION	LF	WIDTH	X0327980 SQ FT
US 24 (Main-line)			
334+87.44	TO	335+40.07	56
335+03.91	TO	335+99.79	60
LETTERS	SF	QUANTITY	TOTAL SF
Y	2.2	2	4.40
I	1.5	2	3.00
E	3.3	2	6.60
L	2.2	2	4.40
D	3.4	2	6.80
TOTAL			64

GUARDRAIL REMOVAL SPECIAL

LOCATION STATION TO STATION	X6320100 FOOT		
US 24 (Main-line)			
330+20.33	TO	335+12.88	492.6
TOTAL		493.00	

CONSTRUCTION LAYOUT

LOCATION	Z0013798
ENTIRE PROJECT	L SUM
TOTAL	1.0

MODEL: D:\dwg\... FILE NAME: S:\CADD\PROJECTS\US24\US24-18-18\US24-18-18.dwg

USER NAME	DESIGNED	REVISED
DRAWN	CHECKED	REVISED
PLOT SCALE	DATE	REVISED

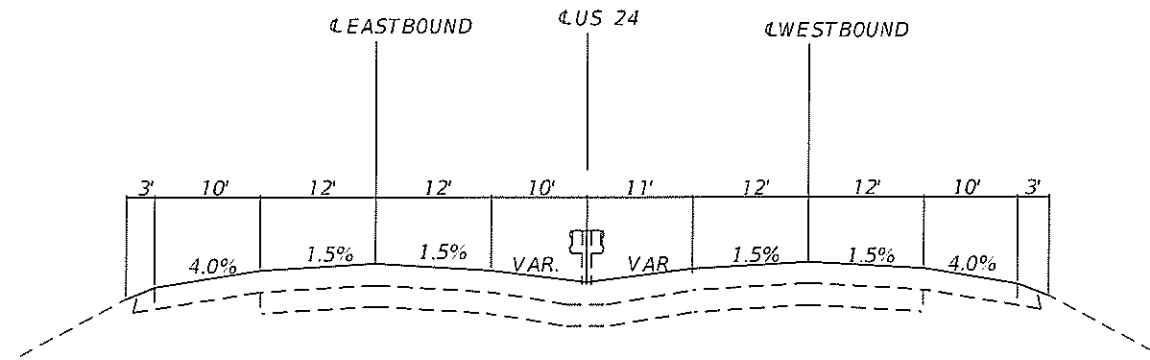
STATE OF ILLINOIS
DEPARTMENT OF TRANSPORTATION

SCHEDULE OF QUANTITIES
US 24 AND CAMERON LANE

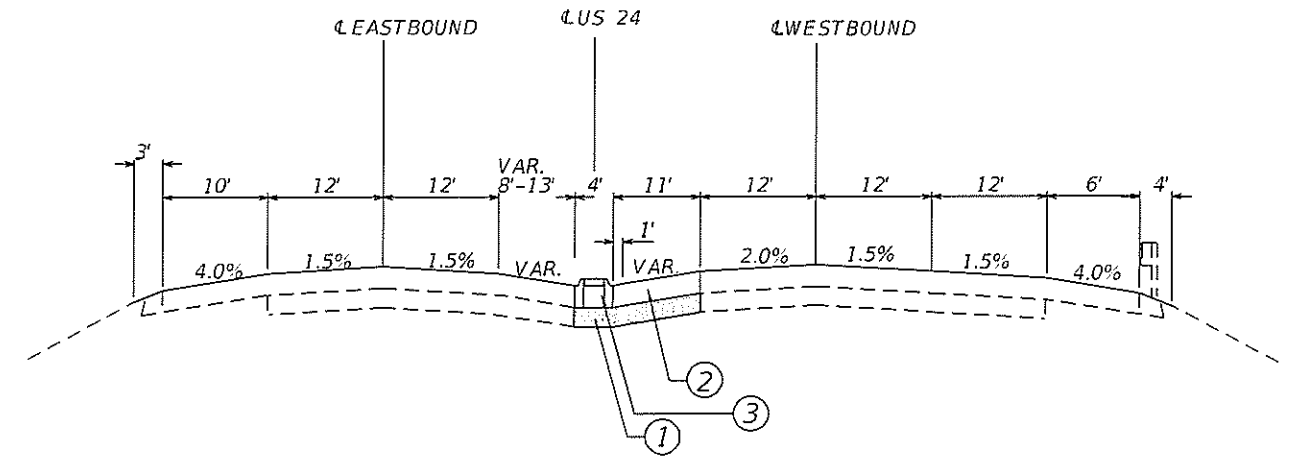
SCALE: N.T.S. SHEET 1 OF 1 SHEETS STA. TO STA.

F.A.P. RTE.	SECTION	COUNTY	TOTAL SHEETS	SHEET NO.
317	45TS-1	PEORIA	37	6
CONTRACT NO. 68E03				

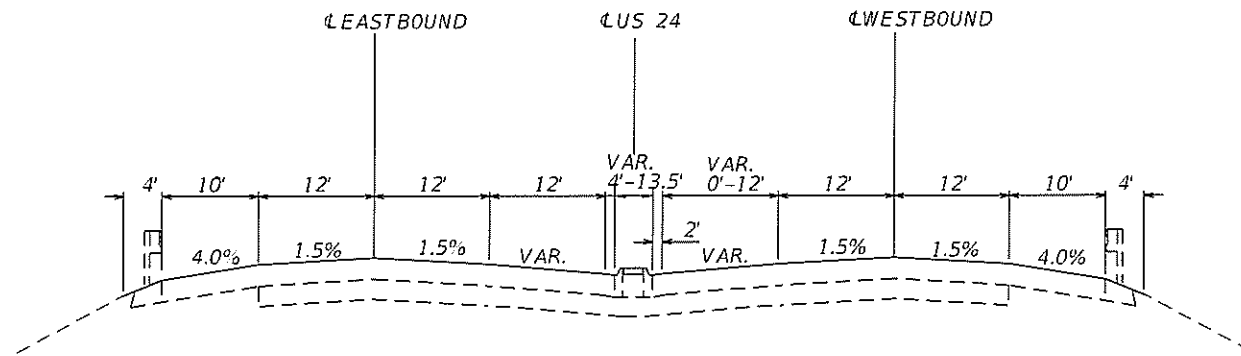
PROPOSED US 24 TYPICAL SECTIONS



FROM STATION 325+00 TO 330+43.41
 *RT. TURN TAPER STA. 330+43.41 TO 332+70.83
 *LT. TURN TAPER STA. 332+38.95 TO 333+71.15



FROM STATION 330+43.41 TO 336+11
 *RT. TURN TAPER STA. 330+43.41 TO 332+70.83
 *LT. TURN TAPER STA. 332+38.95 TO 333+71.15



FROM STATION 336+11 TO 340+00
 BRIDGE STRUCTURE FROM STA. 336+78.70 TO STA. 339+52.14

LEGEND

- ① PROPOSED SUB-BASE GRANULAR MATERIAL (12")
- ② PROPOSED HMA PAVEMENT (FULL DEPTH) 13.5"
- ③ PROPOSED CONCRETE MEDIAN TYPE M-4.06

MODEL: D:\ch1
 FILE: 451166_S01\DRAWING\TYPICAL\US24\US24_TYPICAL.dwg
 24 & Comments Utility.dwg
 4/5/2018

USER NAME = dlowndgrinn	DESIGNED - _____	REVISED - _____
DRAWN - _____	REVISD - _____	
PLOT SCALE = 40.0000 / in	CHECKED - _____	REVISED - _____
PLOT DATE = 4/5/2018	DATE - _____	REVISED - _____

STATE OF ILLINOIS
 DEPARTMENT OF TRANSPORTATION

PROPOSED TYPICAL SECTIONS US ROUTE 24

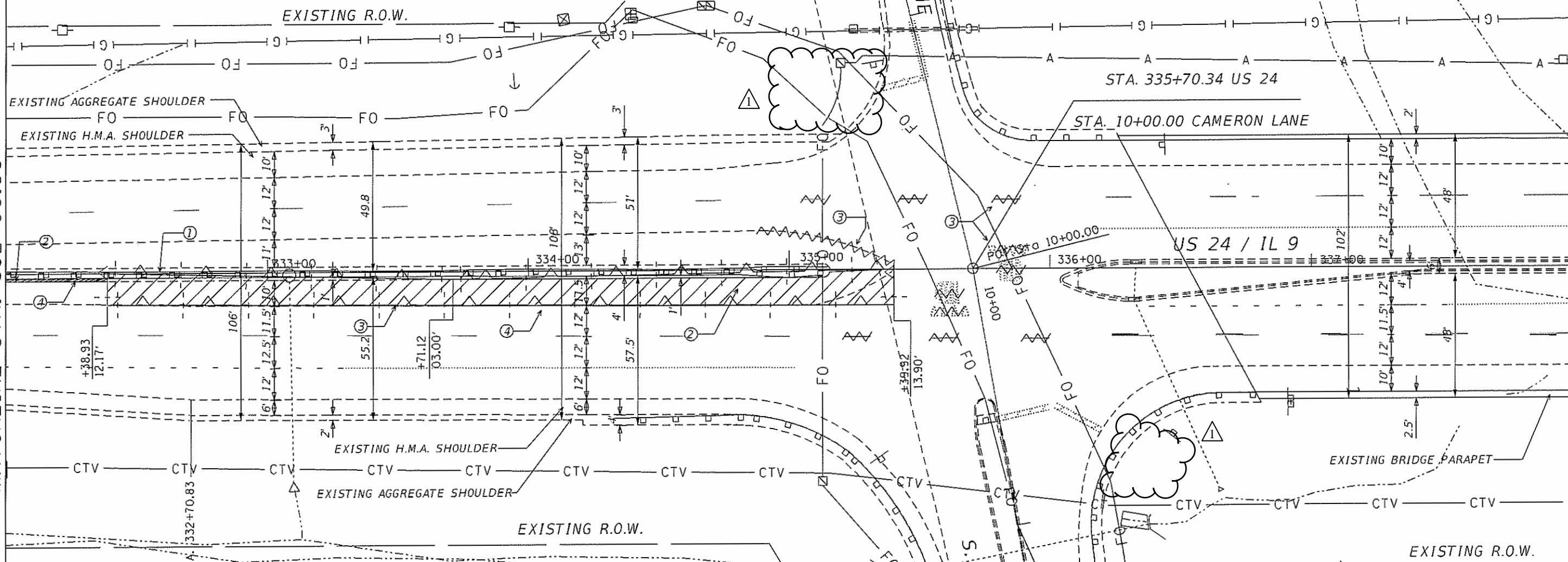
SCALE: 20 SHEET ___ OF ___ SHEETS STA. _____ TO STA. _____

F.A.P. RTE.	SECTION	COUNTY	TOTAL SHEETS	SHEET NO.
317	45TS-1	PEORIA	37	8
68E03			ILLINOIS FED. AID PROJECT	

FRANCISCO ALVAREZ
PARCEL NO. 2015300020

MATCHLINE STA. 332+00.00

MATCHLINE STA. 338+00.00



TIM L BECKMAN
PARCEL NO. 2015300017

CHICAGO PACIFIC CORPORATION
PARCEL NO. 2015300014

REMOVAL LEGEND

- ① GUARDRAIL REMOVAL SPECIAL
- ② PAVED SHOULDER REMOVAL
- ③ PAVEMENT MARKING REMOVAL - WATER BLASTING
- ④ SAW CUT

MODEL: Detail FILE NAME: S:\GEO\PART\SYSTEM\BIS\BIS\PROJECTS\US 24 & CAMERON LANE\PLAN\PLAN1.dwg

USER NAME = stowms11m	DESIGNED -	REVISED -
PLOT SCALE = 1/8" = 1'-0"	DRAWN -	REVISED -
PLOT DATE = 4/9/2018	CHECKED -	REVISED -
	DATE -	RFVISFD -

STATE OF ILLINOIS
DEPARTMENT OF TRANSPORTATION

US 24 AND CAMERON LANE EXISTING & REMOVAL PLANS

SCALE: 1"=20' SHEET 2 OF 3 SHEETS STA. 332+00 TO STA. 338+00

F.A.P. RTE. 317	SECTION 45TS-1	COUNTY PEORIA	TOTAL SHEETS 37	SHEET NO. 10
CONTRACT NO. 68E03				
ILLINOIS FED. AID PROJECT				



WHITNEY LAND TRUST
PARCEL NO. 2015300016

EXISTING R.O.W.

PROJECT ENDS
STA. 344+25

US 24 / IL 9

EXISTING R.O.W.

OPERATING ENGINEERS 649
PARCEL NO. 2015300022

MATCHLINE STA. 338+00.00

MATCHLINE STA. 344+00.00

REMOVAL LEGEND

- ① GUARDRAIL REMOVAL SPECIAL
- ② PAVED SHOULDER REMOVAL
- ③ PAVEMENT MARKING REMOVAL - WATER BLASTING
- ④ SAW CUT

MODEL CREDIT:
 FILE NAME: S:\COURT\STATES\HIS\ROAD\BILU PROJ\US24 & CAMERON\REMOVAL\STAT3.dwg

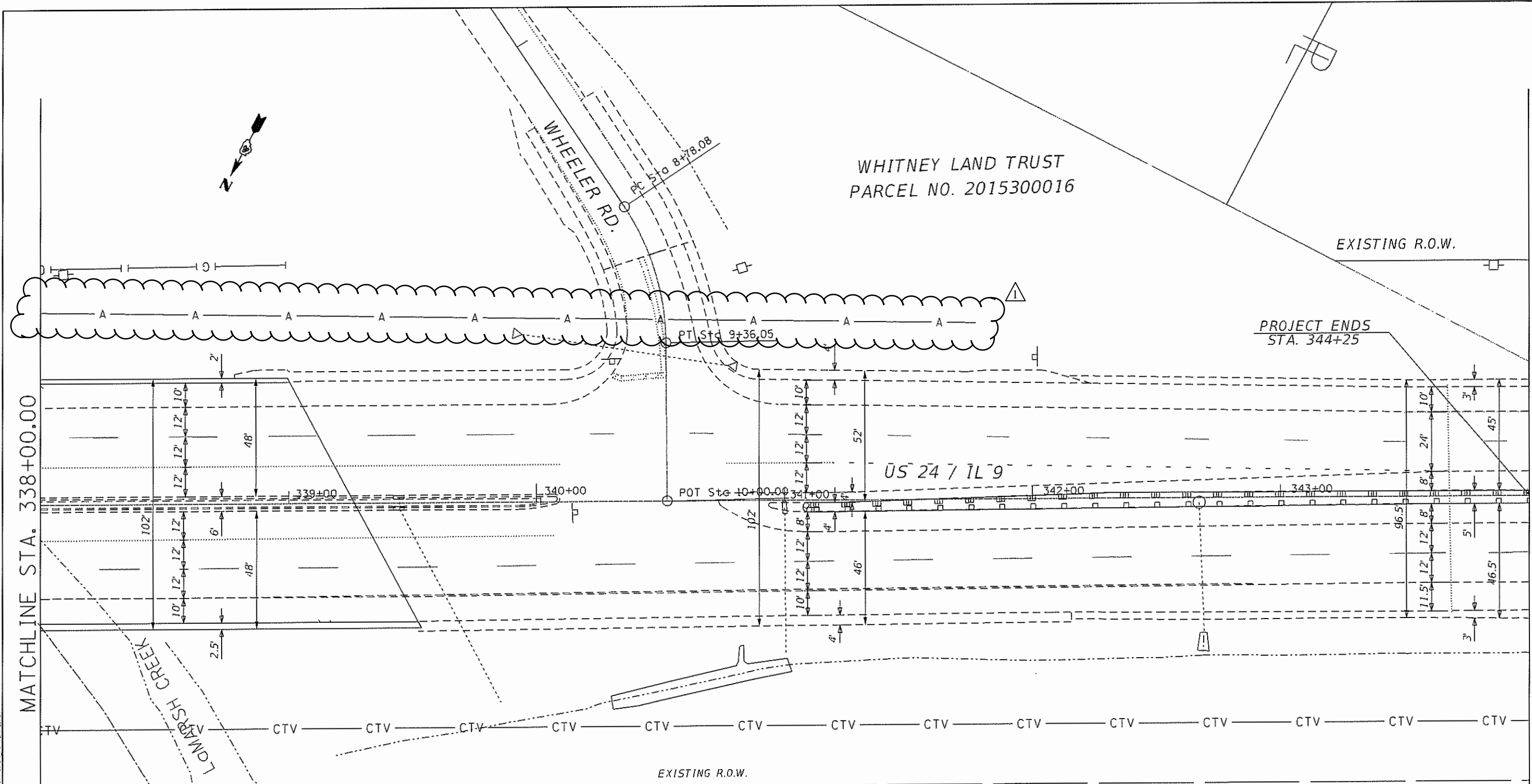
USER NAME - slowatkmn	DESIGNED -	REVISED -
DRAWN -	REVISIONS -	
PLOT SCALE - = 1/8" = 1' IN.	CHECKED -	REVISED -
PLOT DATE - = 05/2018	DATE -	REVISED -

STATE OF ILLINOIS
DEPARTMENT OF TRANSPORTATION

US 24 AND CAMERON LANE EXISTING & REMOVAL PLANS

SCALE: 1"=20' SHEET 3 OF 3 SHEETS STA. 338+00 TO STA. 344+00

F.A.P. RTE.	SECTION	COUNTY	TOTAL SHEETS	SHEET NO.
317	45TS-1	PEORIA	37	11
CONTRACT NO. 68E03			ILLINOIS FED. AID PROJECT	



WHITNEY LAND TRUST
PARCEL NO. 2015300016

EXISTING R.O.W.

PROJECT ENDS
STA. 344+25

MATCHLINE STA. 338+00.00

MATCHLINE STA. 344+00.00

EXISTING R.O.W.

OPERATING ENGINEERS 649
PARCEL NO. 2015300022

JOHN H DOOLEY
PARCEL NO. 2015300021

LEGEND

- 1 CONCRETE MEDIAN, TYPE M-4.06
- 2 SUBBASE GRANULAR MATERIAL, TYPE A 12"
- 3 INLETS TO BE ADJUSTED
- 4 HOT-MIX ASPHALT PAVEMENT (FULL-DEPTH), 13 1/2"
- 5 MODIFIED URETHANE PAVEMENT MARKING 4"
- 6 MODIFIED URETHANE PAVEMENT MARKING 8"
- 7 MODIFIED URETHANE PAVEMENT MARKING 12"
- 8 MODIFIED URETHANE PAVEMENT MARKING 8" (DOTTED LINE)
- 9 MODIFIED URETHANE PAVEMENT MARKING LETTERS & SYMBOLS

MODEL: D:\proj\180618\180618.DWG; USER: JLD; DATE: 6/1/18

USER NAME	DESIGNED	REVISED
DRAWN	CHECKED	REVISED
DATE		REVISED

STATE OF ILLINOIS
DEPARTMENT OF TRANSPORTATION

US 24 AND CAMERON LANE PROPOSED PLANS			
SCALE: 1"=20'	SHEET 3	OF 3 SHEETS	STA. 338+00 TO STA. 344+00

F.A.P. RTE.	SECTION	COUNTY	TOTAL SHEETS	SHEET NO.
317	45TS-1	PEORIA	37	14
ILLINOIS FED. AID PROJECT			68E03	

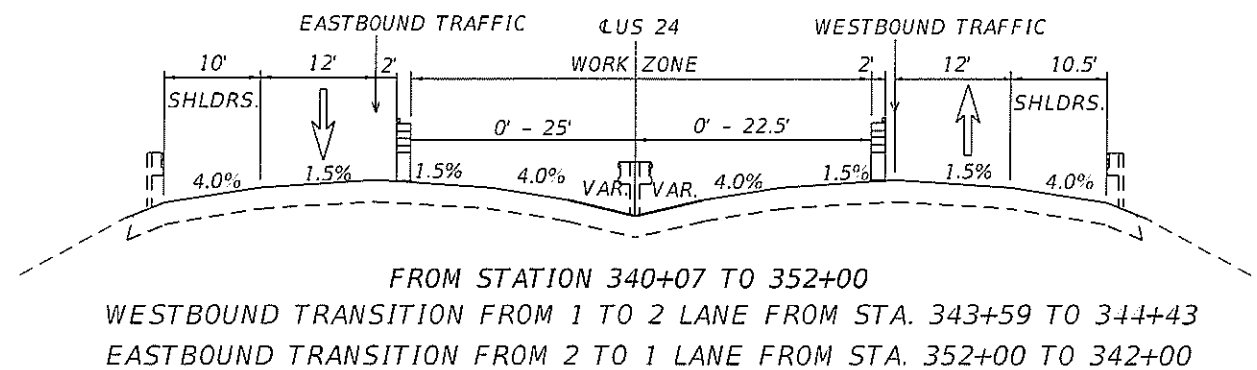
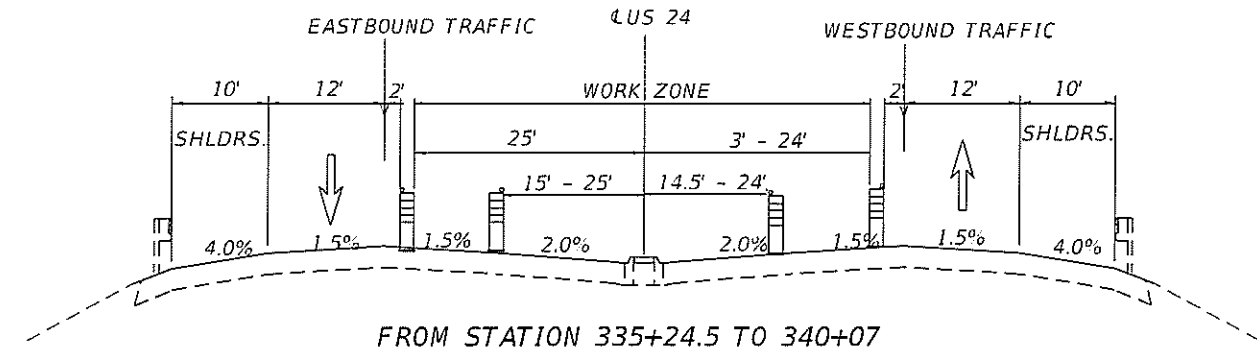
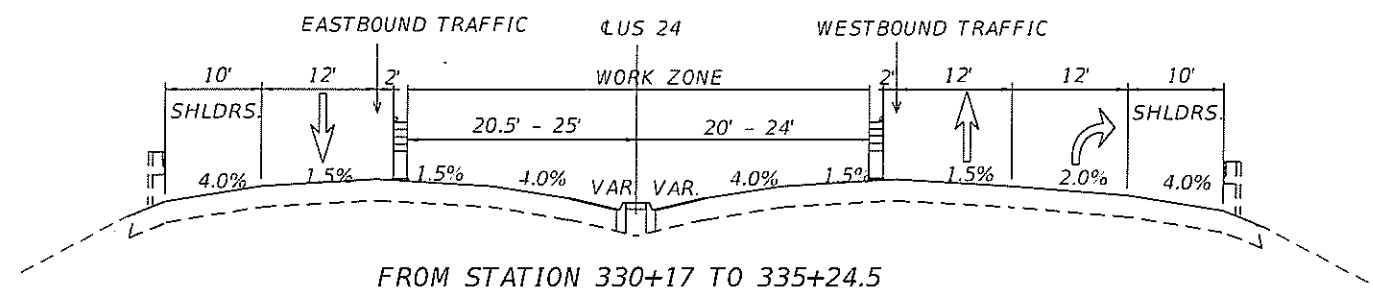
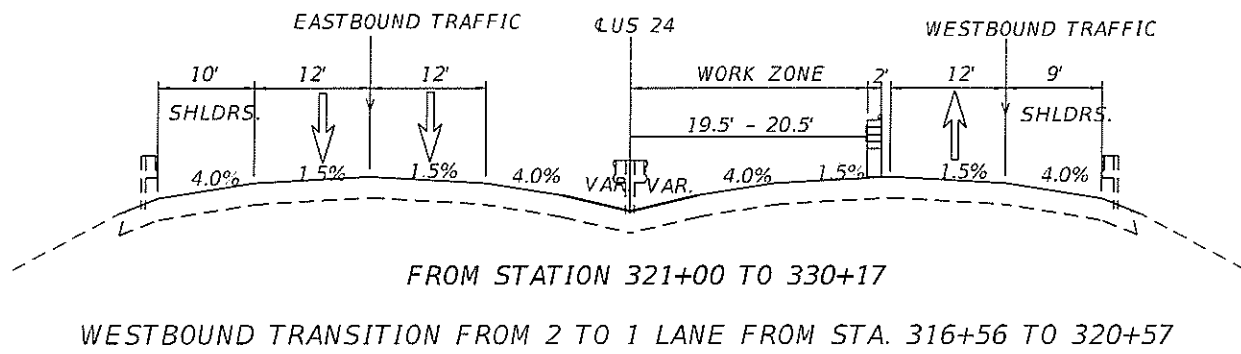
GENERAL STAGING NOTES:

1. TRAFFIC CONTROL SHALL BE IN ACCORDANCE WITH STANDARDS 701101, (CAMERON LANE) 701400, 701401, 701406, AND 701426 EXCEPT WHERE MODIFIED ON STAGING PLAN SHEETS.
2. THE ADVANCE WARNING SIGNS SHALL BE PLACED AS INDICATED ON THE PLANS OR DIRECTED BY THE ENGINEER.
3. THE ADVANCE WARNING SIGN INSTALLATION SHALL CONFORM TO ALL M.U.T.C.D. REQUIREMENTS.

STAGE I CONSTRUCTION SEQUENCE:

1. REMOVAL OF GUADRAIL (SPECIAL) FROM STA. 330+20 TO 335+13
2. SAW CUT EXISTING PAVEMENT FROM STA. 332+40 TO 335+15 AND REMOVAL OF PAVED SHOULDER FROM STA. 330+16.81 TO 335+15.64
3. CONSTRUCT SUB-BASE GRANULAR MATERIAL AND HMA PAVEMENT FROM STA. 332+39 TO 335+16
4. CONSTRUCT CONCRETE MEDIAN FROM STA. 330+17 TO 335+07
5. ADJUST INLET AT STA. 333+08
6. WATER BLAST PAVEMENT MARKING FROM STA. 334+87 TO 335+40
7. SWITCH TRAFFIC CONTROL FOR STAGE II ACCORDING TO TRAFFIC CONTROL STANDARDS 701406 AND 701101

STAGE I



MODEL: Default
FILE NAME: S:\E\H\H\STDR\PH15550\PH15550.dwg
PROJECT: US 24 & Cameron Link\ph15550.dwg

USER NAME = slwmslmm	DESIGNED -	REVISED -
PLOT SCALE = 40,000 / in	DRAWN -	REVISED -
PLOT DATE = 4/9/2018	CHECKED -	REVISED -
	DATE -	REVISED -

**STATE OF ILLINOIS
DEPARTMENT OF TRANSPORTATION**

**CONCEPTUAL STAGE I PLANS
TYPICAL SECTIONS**

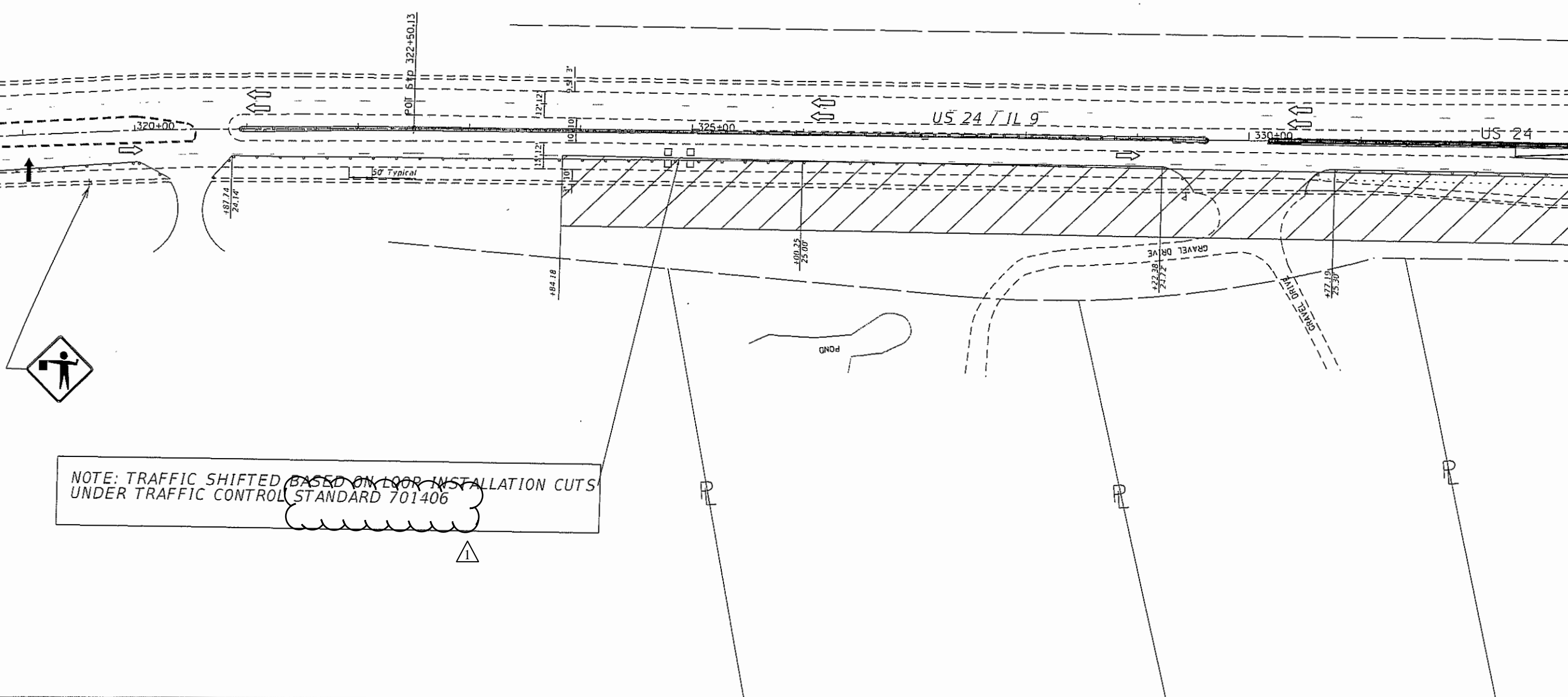
SCALE: _____ SHEET _____ OF _____ SHEETS STA. _____ TO STA. _____

F.A.P. RTE. 317	SECTION 45TS-1	COUNTY PEORIA	TOTAL SHEETS 37	SHEET NO. 15
CONTRACT NO. 68E03				



MATCHLINE STA. 318+00.00

MATCHLINE STA. 333+00.00



NOTE: TRAFFIC SHIFTED BASED ON LOR INSTALLATION CUTS UNDER TRAFFIC CONTROL STANDARD 701406



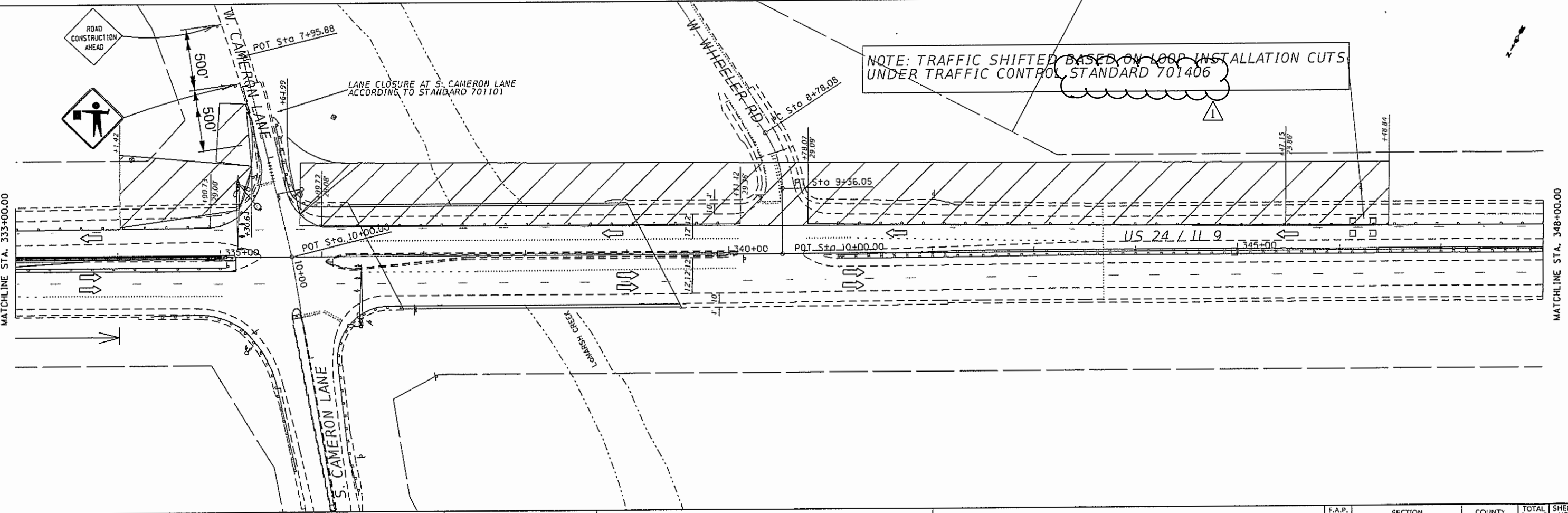
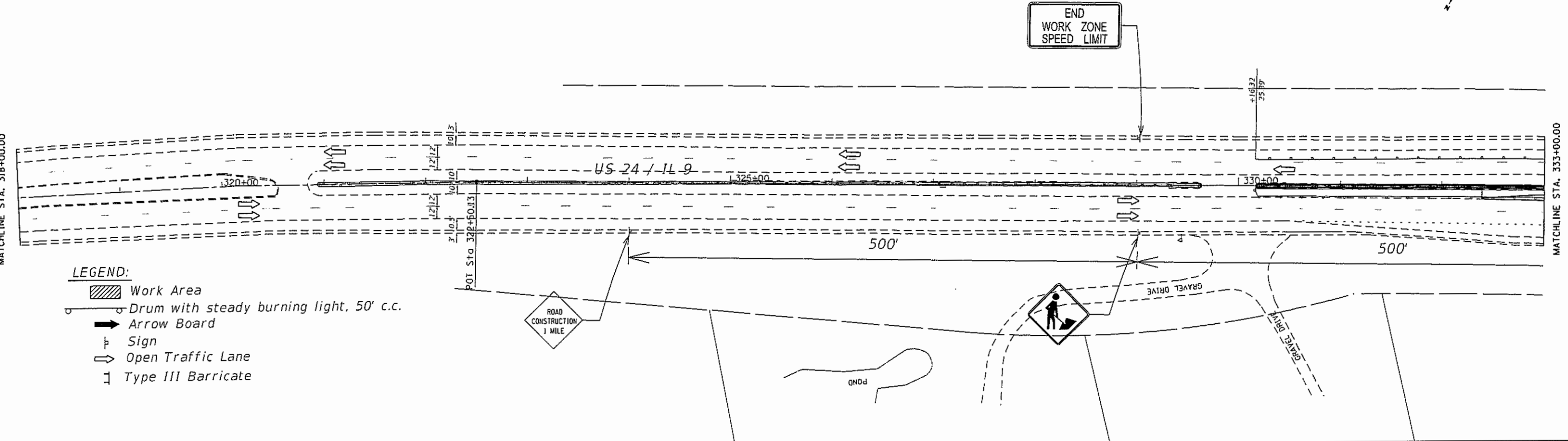
MODEL: D:\p04a
 FILE NAME: S:\ENGINEERING\STIP\PLANS\STIP\US 24 & CAMERON LANE STAGE IIA.dwg

USER NAME = slowinski	DESIGNED - _____	REVISED - _____
PLOT SCALE = 100.017' / in.	DRAWN - _____	REVISED - _____
PLOT DATE = 4/3/2018	CHECKED - _____	REVISED - _____
	DATE - _____	REVISED - _____

STATE OF ILLINOIS
DEPARTMENT OF TRANSPORTATION

US 24 & CAMERON LANE STAGE IIA
 SCALE: 1" = 50' SHEET 2 OF 3 SHEETS STA. 318+00 TO STA. 333+00

F.A.P. RTE.	SECTION	COUNTY	TOTAL SHEETS	SHFT. NO.
317	TS45-1	PEORIA	37	20
CONTRACT NO. 68E03				



- LEGEND:**
- Work Area
 - Drum with steady burning light, 50' c.c.
 - Arrow Board
 - Sign
 - Open Traffic Lane
 - Type III Barricade

NOTE: TRAFFIC SHIFTED BASED ON LOOP INSTALLATION CUTS UNDER TRAFFIC CONTROL STANDARD 701406

MODEL: D:\bwin\...
 FILE NAME: S:\CENTRAL\PROJECTS\24 & CAMERON\24 & CAMERON IIB\24 & CAMERON IIB.dwg

USER NAME	vwinskin	DESIGNED	-	REVISED	-
PLOT SCALE	100,000' / in.	DRAWN	-	REVISED	-
PLOT DATE	4/3/2018	CHECKED	-	REVISED	-
		DATE	-	REVISED	-

**STATE OF ILLINOIS
DEPARTMENT OF TRANSPORTATION**

US 24 & CAMERON LANE STAGE IIB	
SCALE: 1" = 50'	SHEET 1 OF 2 SHEETS STA. 318+00 TO STA. 348+00

F.A.P. RTE.	SECTION	COUNTY	TOTAL SHEETS	SHEET NO.
317	45TS-1	PEORIA	37	22
CONTRACT NO. 68E03			ILLINOIS FED. AID PROJECT	