

06-15-2018 LETTING ITEM 138

STATE OF ILLINOIS
DEPARTMENT OF TRANSPORTATION

F.A. NO.	SECTION	COUNTY	TOTAL SHEETS
-VAR-	17	VARIOUS	17
ILLINOIS		CONTRACT NO. 72J96	
D-96-060-17			

FOR INDEX OF SHEETS, SEE SHEET NO. 2

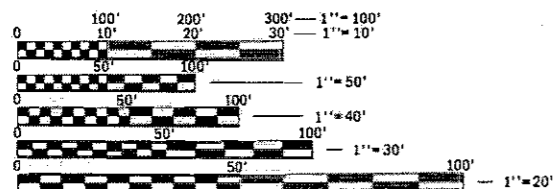
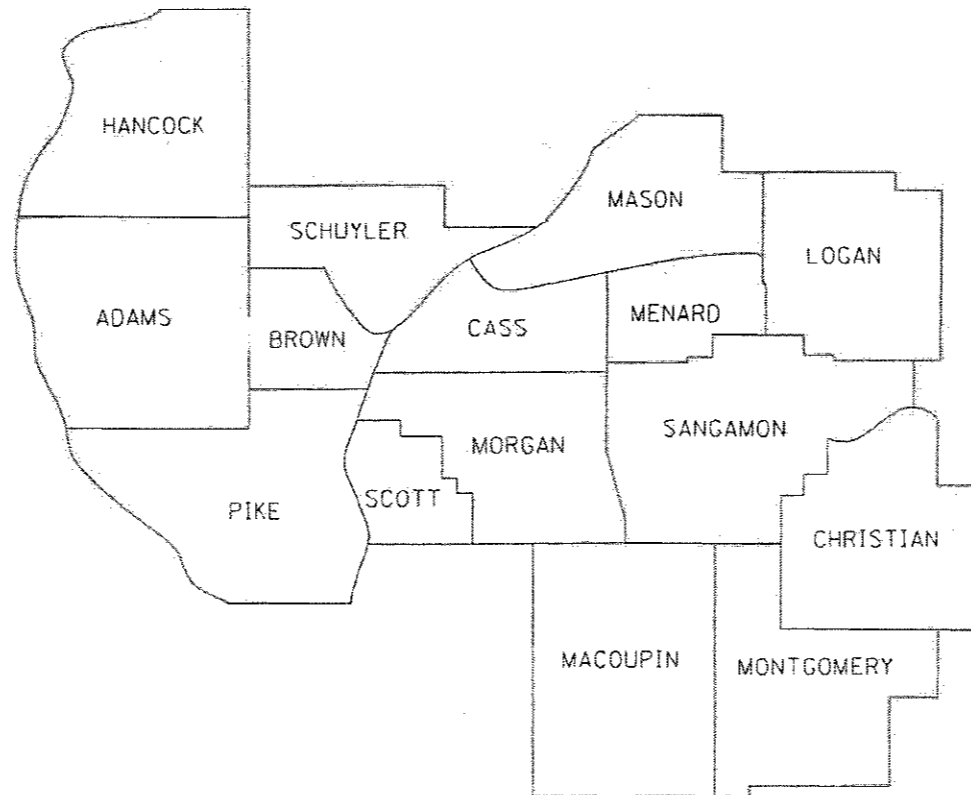
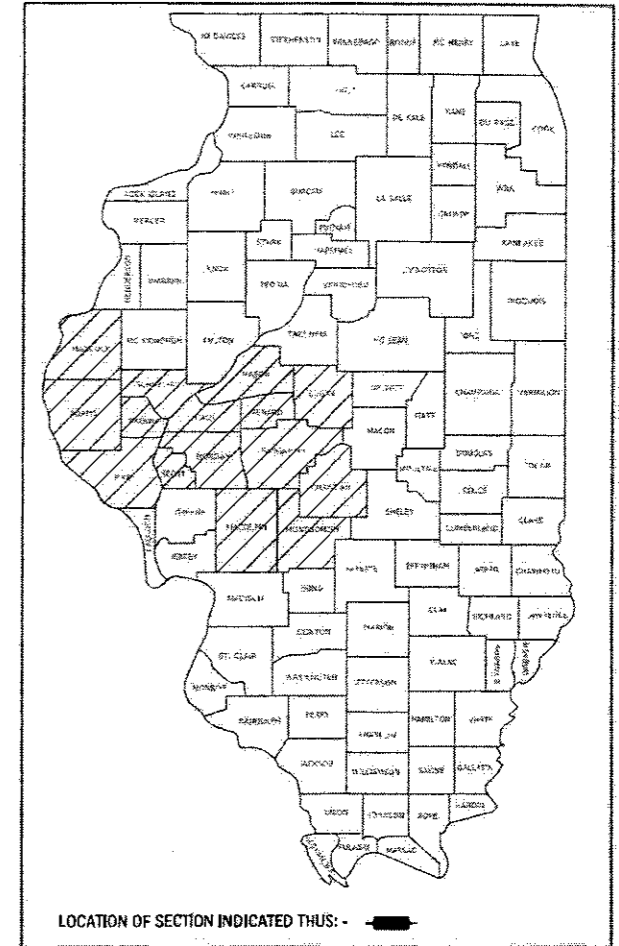
PROPOSED HIGHWAY PLANS

VARIOUS ROUTES
SECTION D6 CABLE/GUARDRAIL 2017-4
CABLE & GUARDRAIL REPAIR
VARIOUS COUNTIES IN D6
C-96-060-17

INDEX OF SHEETS

- 1 COVER SHEET
- 2 GENERAL NOTES
- 3-5 SUMMARY OF QUANTITIES
- 6-16 PRE-MGS HIGHWAY STANDARDS
- 17 CABLE GUARD MARKER DETAIL

FOR LIST OF STANDARDS, SEE SHEET 2



FULL SIZE PLANS HAVE BEEN PREPARED USING STANDARD ENGINEERING SCALES. REDUCED SIZED PLANS WILL NOT CONFORM TO STANDARD SCALES. IN MAKING MEASUREMENTS ON REDUCED PLANS, THE ABOVE SCALES MAY BE USED.

J.U.L.I.E.
JOINT UTILITY LOCATION INFORMATION FOR EXCAVATION
1-800-892-0123
OR 811

PROJECT ENGINEER: JAY EDWARDS 217-785-0597
TEAM MANAGER: JONATHAN COX 217-782-1378

CONTRACT NO. 72J96

STATE OF ILLINOIS
DEPARTMENT OF TRANSPORTATION

SUBMITTED *26 March 2018*

[Signature]
REGIONAL ENGINEER

May 11 2018
ENGINEER OF DESIGN AND ENVIRONMENT

May 21 2018
DIRECTOR OF HIGHWAYS PROJECT IMPLEMENTATION

PRINTED BY THE AUTHORITY
OF THE STATE OF ILLINOIS

HIGHWAY STANDARDS

STANDARD NO.	TITLE
630001-12	STEEL PLATE BEAM GUARDRAIL
630301-08	SHOULDER WIDENING FOR TYPE 1 (SPECIAL) GUARDRAIL TERMINALS
631011-10	TRAFFIC BARRIER TERMINAL, TYPE 2
631026-06	TRAFFIC BARRIER TERMINAL, TYPE 5
631031-15	TRAFFIC BARRIER TERMINAL, TYPE 6
643001-02	SAND MODULE IMPACT ATTENUATORS
664001-02	CHAIN LINK FENCE
665001-02	WOVEN WIRE FENCE
701001-02	OFF-ROAD OPERATIONS, 2L, 2W, MORE THAN 15' (4.5 M) AWAY
701006-05	OFF-ROAD OPERATIONS, 2L, 2W, 15' (4.5 M) TO 24" (600 MM) FROM PAVEMENT EDGE
701101-05	OFF-ROAD OPERATIONS, MULTILANE, 15' (4.5 M) TO 24" (600 MM) FROM PAVEMENT EDGE
701106-02	OFF-ROAD OPERATIONS, MULTILANE, MORE THAN 15' (4.5 M) AWAY
701201-04	LANE CLOSURE, 2L, 2W, DAY ONLY, FOR SPEEDS > 45 MPH
701301-04	LANE CLOSURE, 2L, 2W, SHORT TIME OPERATIONS
701400-09	APPROACH TO LANE CLOSURE, FREEWAY/EXPRESSWAY
701406-11	LANE CLOSURE, FREEWAY/EXPRESSWAY, DAY OPERATIONS ONLY
701411-09	LANE CLOSURE, MULTILANE, AT ENTRANCE OR EXIT RAMP, FOR SPEEDS > 45 MPH
701421-08	LANE CLOSURE, MULTILANE, DAY OPERATIONS ONLY, FOR SPEEDS > 45 MPH TO 55 MPH
701422-10	LANE CLOSURE, MULTILANE, FOR SPEEDS > 45 MPH TO 55 MPH
701426-09	LANE CLOSURE, MULTILANE, INTERMITTENT OR MOVING OPERATION, FOR SPEEDS > 45 MPH
701427-05	LANE CLOSURE, MULTILANE, INTERMITTENT OR MOVING OPERATION, FOR SPEEDS < 40 MPH
701428-01	TRAFFIC CONTROL SET UP AND REMOVAL FREEWAY/EXPRESSWAY
701456-04	PARTIAL EXIT RAMP CLOSURE FREEWAY/EXPRESSWAY
701501-06	URBAN LANE CLOSURE, 2L, 2W, UNDIVIDED
701502-08	URBAN LANE CLOSURE, 2L, 2W, WITH BIDIRECTIONAL LEFT TURN LANE
701601-09	URBAN LANE CLOSURE, MULTILANE, 1W OR 2W WITH NONTRAVERSABLE MEDIAN
701602-09	URBAN LANE CLOSURE, MULTILANE, 2W WITH BIDIRECTIONAL LEFT TURN LANE
701606-10	URBAN LANE CLOSURE, MULTILANE, 2W WITH MOUNTABLE MEDIAN
701701-10	URBAN LANE CLOSURE, MULTILANE INTERSECTION
701901-07	TRAFFIC CONTROL DEVICES
725001-01	OBJECT AND TERMINAL MARKERS
630101-10	STRONG POST GUARDRAIL ATTACHED TO CULVERT
630111	WEAK POST GUARDRAIL ATTACHED TO CULVERT

GENERAL NOTES

ALL DISTURBED AREAS CAUSED BY THE CONTRACTOR'S OPERATIONS SHALL BE GRADED AND SEEDED WITH CLASS 2 ROADSIDE MIXTURE AND FERTILIZED AS STATED IN SECTION 250 OF THE STANDARD SPECIFICATIONS. COST SHALL BE CONSIDERED INCLUDED IN THE UNIT COST OF THE WORK BEING PERFORMED.

REMOVAL OF DAMAGED IMPACT ATTENUATORS SHALL BE INCLUDED IN THE COST OF THE IMPACT ATTENUATOR BEING INSTALLED.

REMOVAL AND DISPOSAL OF DAMAGED FENCE SHALL BE INCLUDED IN THE COST OF THE FENCE BEING INSTALLED.

DISTRICT SIX	
EXAMINED <i>Feb. 5th</i>	20 <i>18</i>
<i>John C. Wynn</i> OPERATIONS ENGINEER	

EXAMINED <i>February 5th</i>	20 <i>18</i>
<i>Susan J. Daborn</i> PROJECT IMPLEMENTATION ENGINEER	

EXAMINED <i>February 15</i>	20 <i>18</i>
<i>John P. Myer</i> PROGRAM DEVELOPMENT ENGINEER	

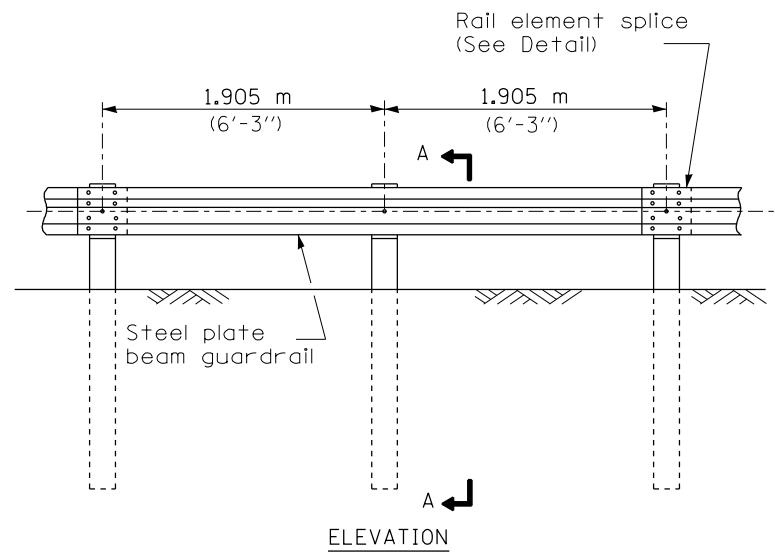
CODE NO.	ITEM	UNIT	TOTAL QUANTITY	6-00664-0700	6-00664-9990	0-01857-6001
				VARIOUS GR	MCHD	MED CBL BAR
				100% STATE	100% MCHD	100% STATE
				ROADWAY	ROADWAY	ROADWAY
				0021	0021	0021
				RURAL	RURAL	RURAL
63000001	STEEL PLATE BEAM GUARDRAIL, TYPE A, 6 FOOT POSTS	FOOT	550	150	400	
63000003	STEEL PLATE BEAM GUARDRAIL, TYPE A, 9 FOOT POSTS	FOOT	450	150	300	
63000030	STRONG POST GUARDRAIL ATTACHED TO CULVERT	FOOT	425	125	300	
x6300155	STEEL PLATE BEAM GUARDRAIL, ATTACHED TO STRUCTURE (SPECIAL)	FOOT	425	125	300	
63100045	TRAFFIC BARRIER TERMINAL, TYPE 2	EACH	10	4	6	
63100070	TRAFFIC BARRIER TERMINAL, TYPE 5	EACH	10	4	6	
63100085	TRAFFIC BARRIER TERMINAL, TYPE 6	EACH	10	4	6	
63100167	TRAFFIC BARRIER TERMINAL, TYPE 1 (SPECIAL) TANGENT	EACH	44	14	30	
63100169	TRAFFIC BARRIER TERMINAL, TYPE 1 (SPECIAL) FLARED	EACH	8	2	6	
63200310	GUARDRAIL REMOVAL	FOOT	850	400	450	
64300450	IMPACT ATTENUATORS (NON-REDIRECTIVE), TEST LEVEL 3	EACH	5	2	3	
64401300	HIGH TENSION CABLE MEDIAN BARRIER TERMINALS	EACH	5		3	2
66400105	CHAIN LINK FENCE, 4'	FOOT	550	200	350	
66500105	WOVEN WIRE FENCE, 4'	FOOT	450	100	350	

CODE NO.	ITEM	UNIT	TOTAL QUANTITY	6-00664-0700	6-00664-9990	0-01857-6001
				VARIOUS GR	MCHD	MED CBL BAR
				100% STATE ROADWAY	100% MCHD ROADWAY	100% STATE ROADWAY
				0021 RURAL	0021 RURAL	0021 RURAL
67100100	MOBILIZATION	LSUM	1	0.3	0.6	0.1
70100420	TRAFFIC CONTROL AND PROTECTION, STANDARD 701411	EACH	4	1	3	
72501000	TERMINAL MARKER - DIRECT APPLIED	EACH	170	20	150	
78200005	GUARDRAIL REFLECTORS, TYPE A	EACH	375	125	250	
X0325231	CABLE GUARD MARKER	EACH	500		300	200
X0325899	REPAIR HIGH TENSION CABLE (GIBALTAR)	FOOT	750		350	400
X0325900	REPAIR HIGH TENSION BARRIER TERMINAL (GIBALTAR)	EACH	10		5	5
X0325901	REPAIR POSTS (GIBALTAR)	EACH	250		150	100
X0325902	REMOVE AND REPLACE POSTS (GIBALTAR)	EACH	150		50	100
X0327490	REPAIR HIGH TENSION CABLE (NU-CABLE)	FOOT	350		250	100
X0327491	REPAIR POSTS (NU-CABLE)	EACH	75		25	50
X0327492	REMOVE AND REPLACE POSTS (NU-CABLE)	EACH	75		25	50
X0327493	REPAIR HIGH TENSION BARRIER TERMINAL (NU-CABLE)	EACH	9		5	4
X6431220	REMOVE AND REPLACE IMPACT ATTENUATOR SAND MODULE	EACH	45	10	35	

14

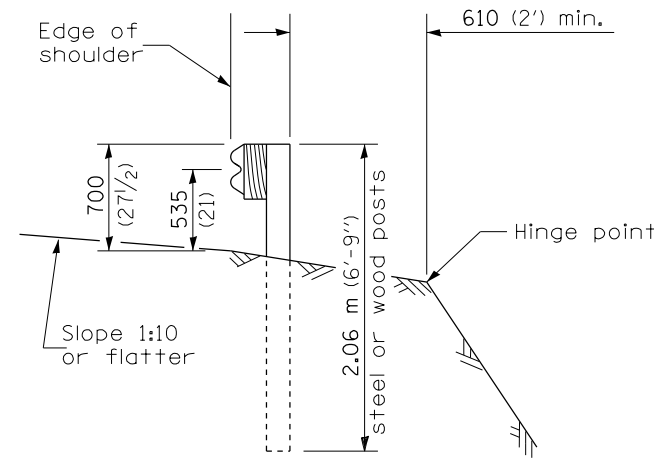
CODE NO.	ITEM	UNIT	TOTAL QUANTITY	6-00664-0700	6-00664-9990	0-01857-6001
				VARIOUS CR	MCHD	MED CBL BAR
				100% STATE	100% MCHD	100% STATE
				ROADWAY	ROADWAY	ROADWAY
				0021	0021	0021
				RURAL	RURAL	RURAL
X7011834	TRAFFIC CONTROL AND PROTECTION, CALL OUT WORK	EACH	40	10	30	
X7011836	TRAFFIC CONTROL AND PROTECTION, FREEWAY/EXPRESSWAY, CALL OUT WORK	EACH	44	10	30	4
Z0008759	CALL OUT	EACH	28	10	15	3
Z0008760	EMERGENCY WORK CALL OUT	EACH	43	10	30	3
Z0052000	REPAIR STEEL PLATE BEAM GUARDRAIL, TYPE A	FOOT	600	300	300	
Z0052410	REPAIR TRAFFIC BARRIER TERMINAL, TYPE 1 SPECIAL (TANGENT)	EACH	44	14	30	
Z0052415	REPAIR TRAFFIC BARRIER TERMINAL, TYPE 1 SPECIAL (FLARED)	EACH	4	2	2	
Z0052600	REPAIR TRAFFIC BARRIER TERMINAL, TYPE 2	EACH	4	2	2	
Z0053000	REPAIR TRAFFIC BARRIER TERMINAL, TYPE 5	EACH	6	2	4	

9

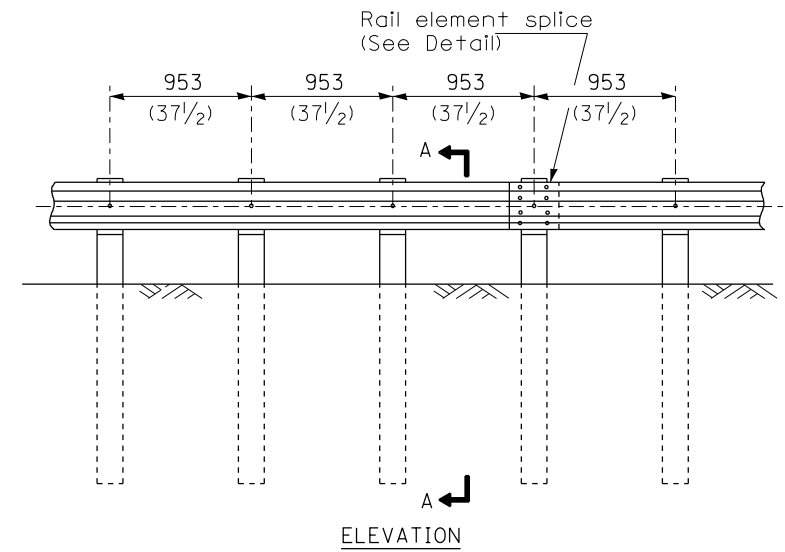


TYPE A

1.905 m (6'-3") Typical post spacing

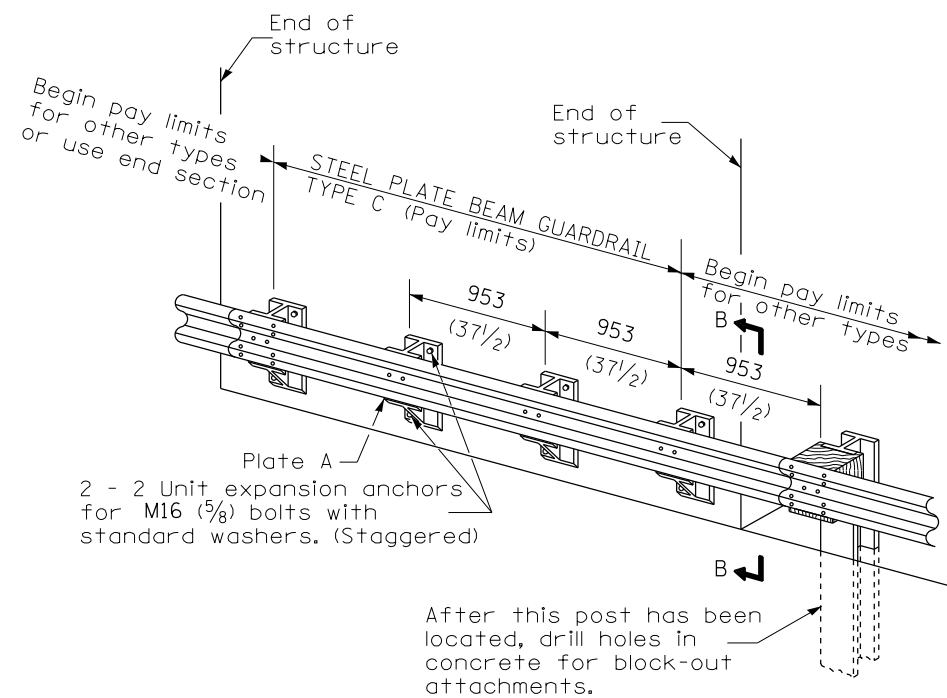


SECTION A-A



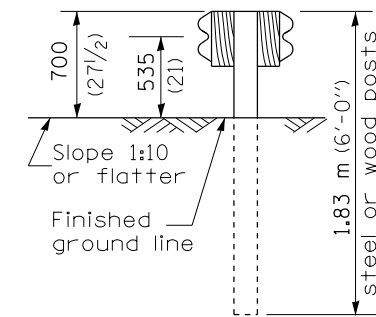
TYPE B

953 (37 1/2) Closed post spacing

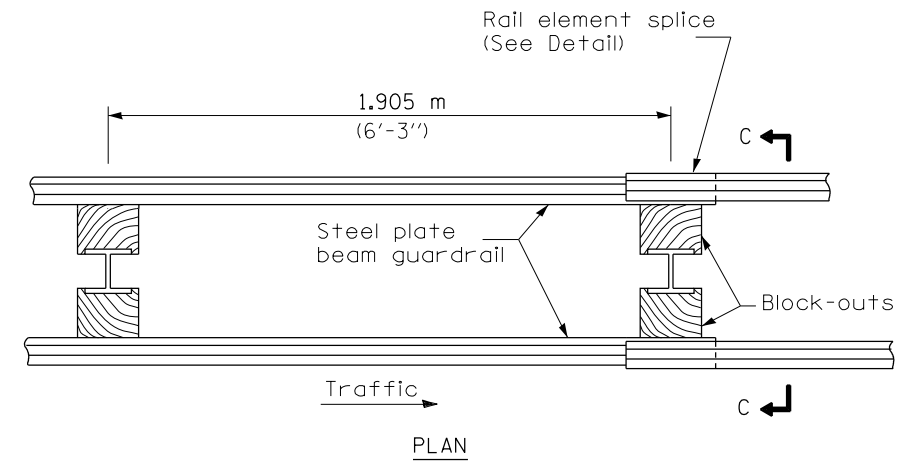


TYPE C

953 (37 1/2) Block-out spacing

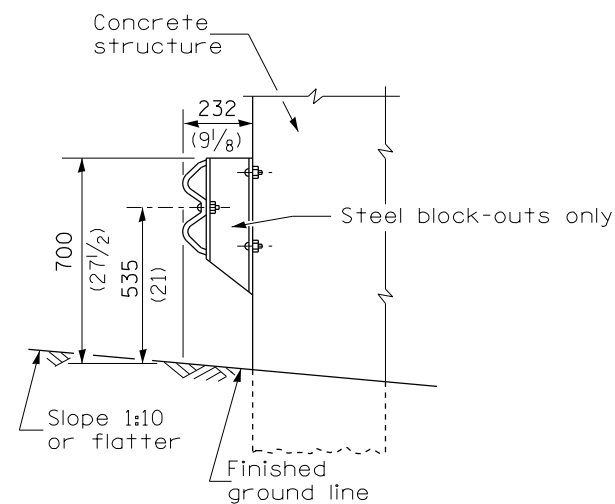


SECTION C-C



TYPE D

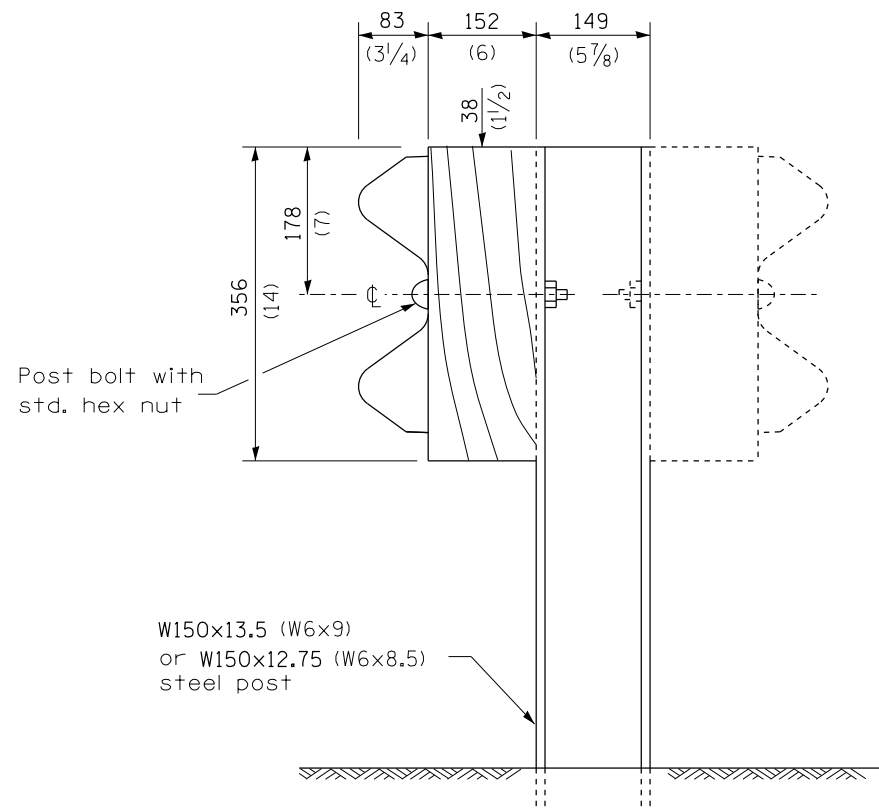
Double steel plate beam guardrail
1.905 m (6'-3") typical post spacing



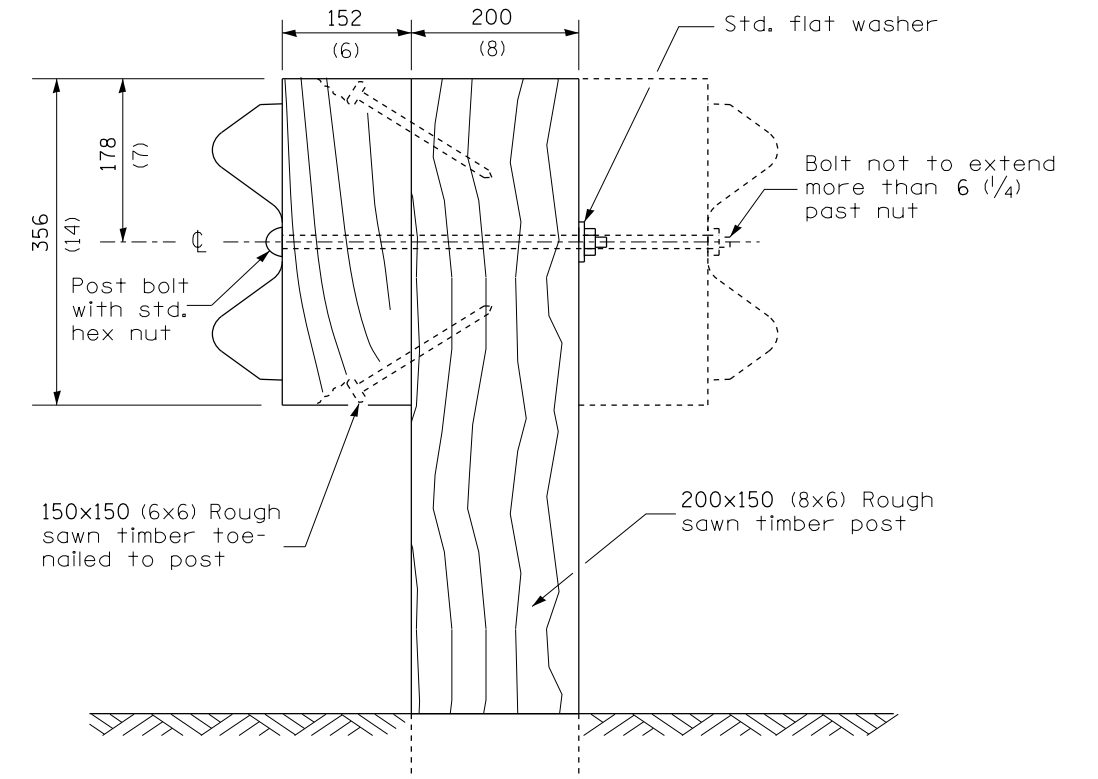
SECTION B-B

GENERAL NOTES

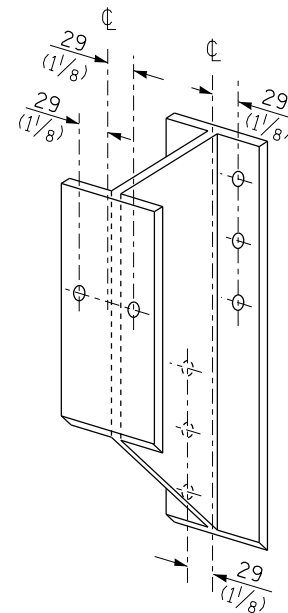
FILE NAME =	USER NAME = verenskifa	DESIGNED -	REVISED -	DATE OF ILLINOIS DEPARTMENT OF TRANSPORTATION	PRE-MFG HIGHWAY STANDARD 630001-06 STEEL PLATE BEAM EFFECTIVE 4-1-06	F.A.*	SECTION	COUNTY	TOTAL	SHEET
pwz\VL084EBIDINTEG.illinois.gov:PWIDOT\Documents\IDOT Offices\District 6\Projects\D672J96\CADDData\CAD\DRAWN2196-shi-630001-06_SPBGR_STD.dgn		CHECKED -	REVISED -			**	VARIOUS	17	6	
PLOT SCALE = 26.0000 ' / in.		DATE -	REVISED -			CONTRACT NO. 72J96				
Default						SCALE:	SHEET 1 OF 4 SHEETS	STA.	TO STA.	ILLINOIS FED. AID PROJECT



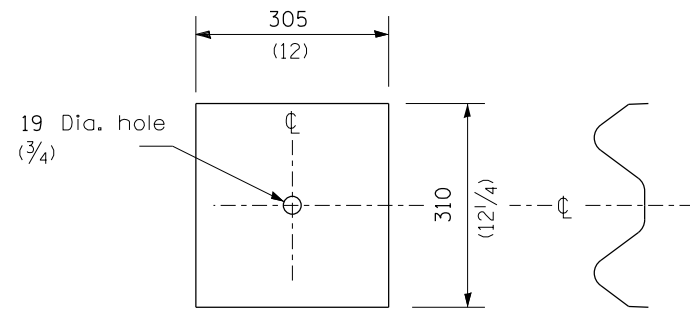
STEEL POST CONSTRUCTION



WOOD POST CONSTRUCTION



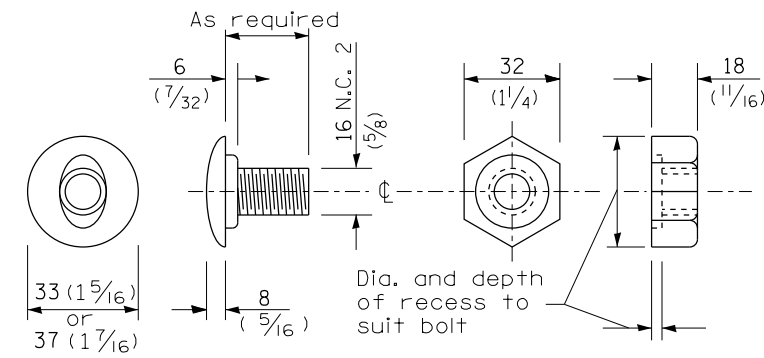
STEEL BLOCK-OUT DETAIL



NOTE

Plate A shall be placed between rail element and block-out at non-splice mounting points only when steel block-outs are used.

PLATE A



POST OR SPLICE BOLT & NUT

FILE NAME =	USER NAME = verenskifa	DESIGNED -	REVISED -
pww\1084EBID\INTEG.illinois.gov\PWIDOT\Documents\11084EBID\Projects\672196\CADDData\CAD\11084EBID\11084EBID-630001-06_SPBGR_STD.dgn		DRWN -	REVISED -
	PLOT SCALE = 26.0000 ' / in.	CHECKED -	REVISED -
Default	PLOT DATE = 3/28/2018	DATE -	REVISED -

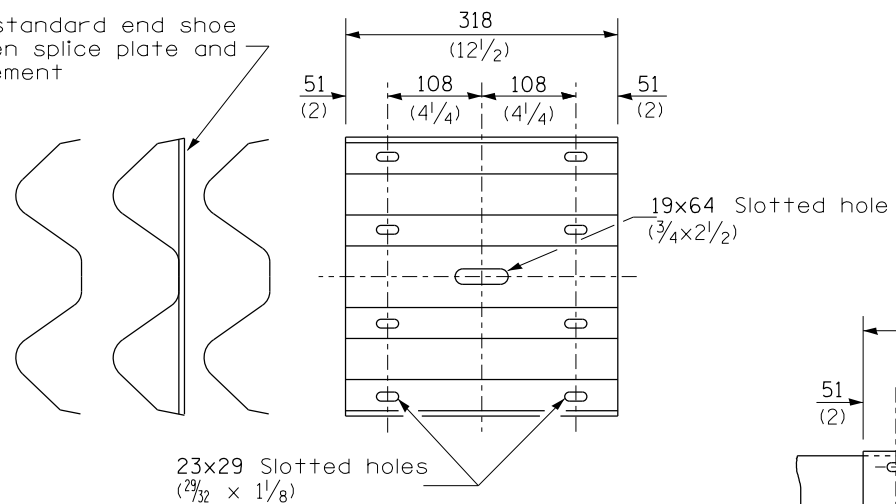
**STATE OF ILLINOIS
DEPARTMENT OF TRANSPORTATION**

**PRE-MFG HIGHWAY STANDARD 630001-06
STEEL PLATE BEAM EFFECTIVE 4-1-06**

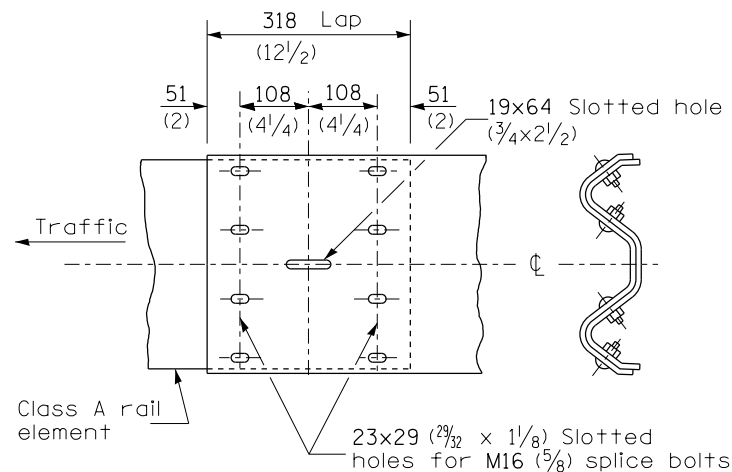
SCALE: SHEET 2 OF 4 SHEETS STA. TO STA.

F.A.* RTE.	SECTION	COUNTY	TOTAL SHEETS	SHEET NO.
*VAR	**	VARIOUS	17	7
			CONTRACT NO. 72J96	

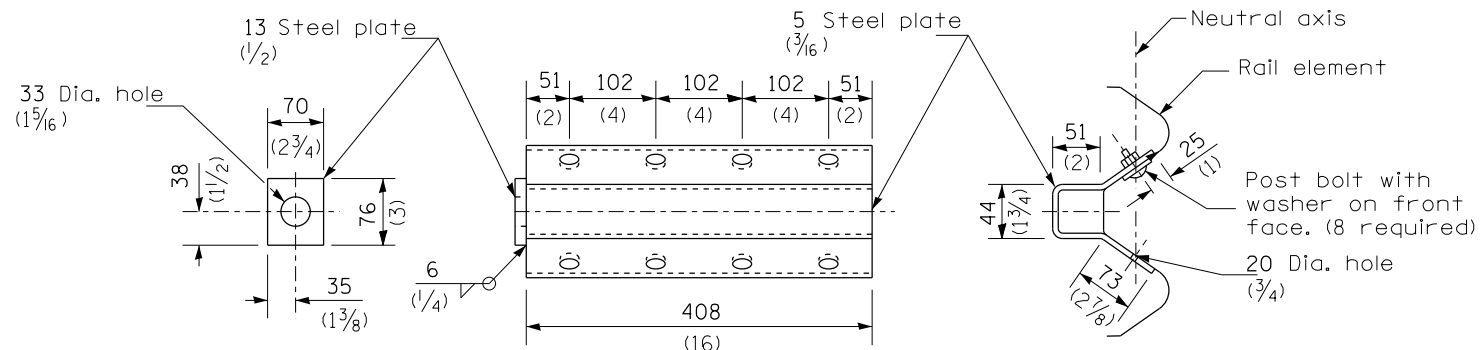
Place standard end shoe between splice plate and rail element



SPLICE PLATE



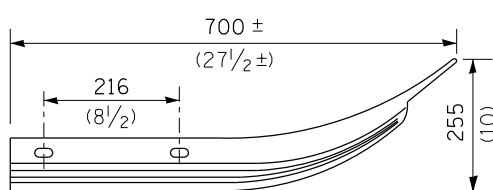
RAIL ELEMENT SPLICE



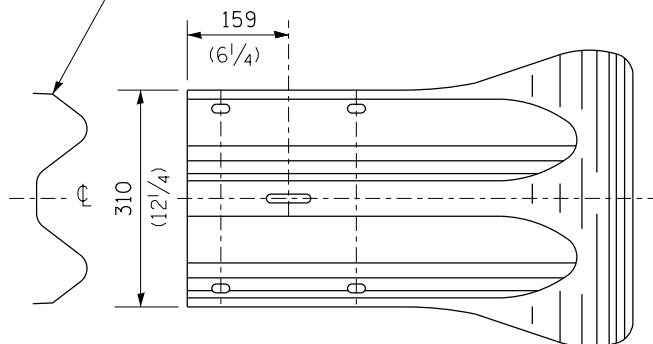
NOTE

Anchor plate T shall be used to attach cable assembly to guardrail when required on traffic barrier terminals.

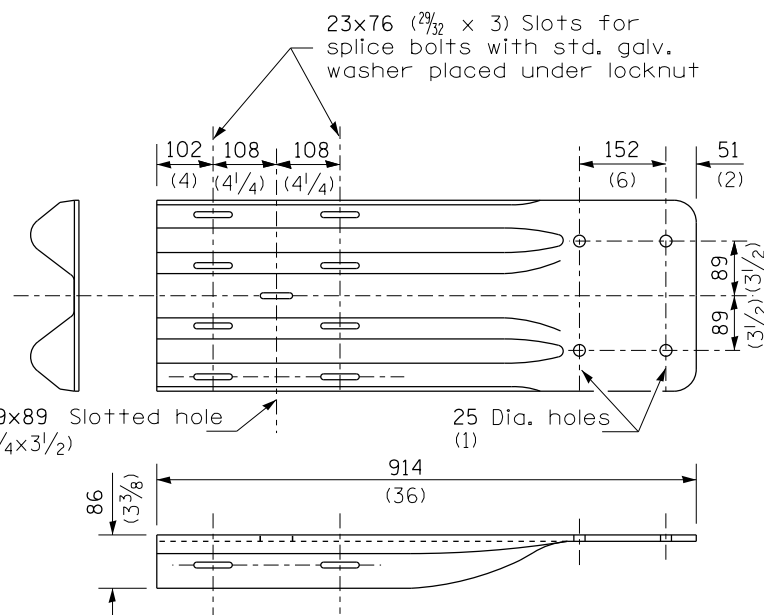
ANCHOR PLATE T DETAILS



Class A rail element



END SECTION



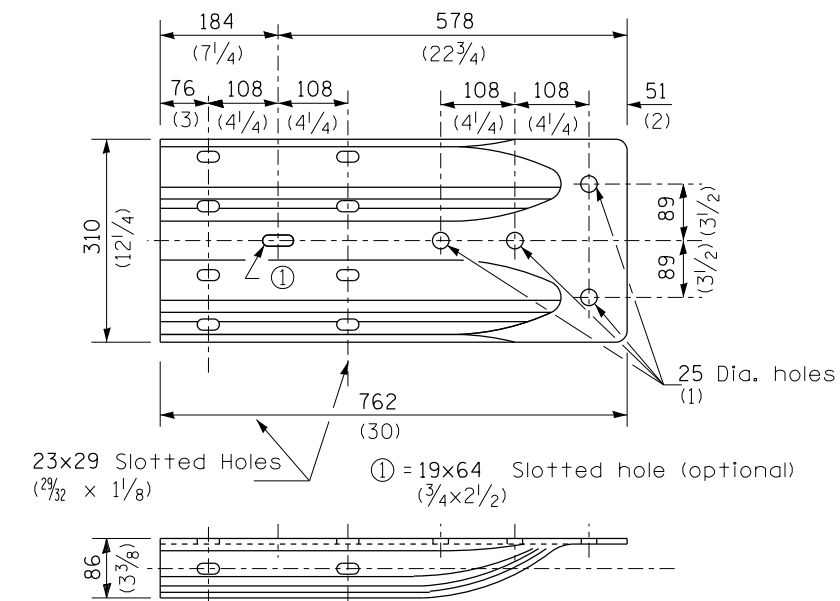
NOTE

When end shoe is attached to a bridge parapet which has an expansion joint, the bolts shall be provided with a locknut or double nut and shall be tightened only to a point that will allow guardrail movement.

The standard end shoe shall be attached to the concrete with pre-drilled or self-drilling anchor bolts. The anchor cone shall be set flush with the surface of the concrete.

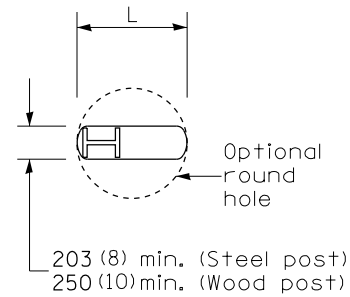
Externally threaded studs protruding from the surface of the concrete will not be permitted.

END SHOE

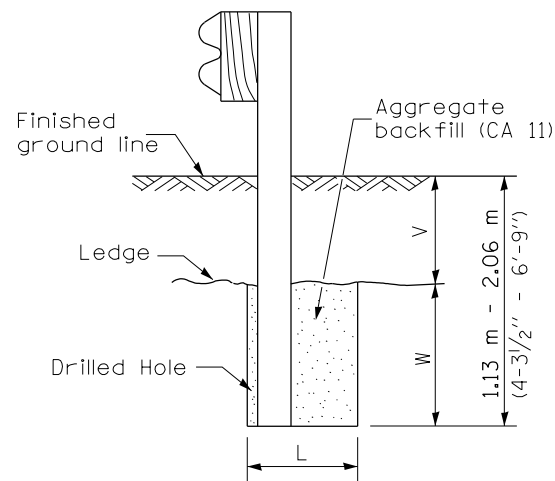


ALTERNATE END SHOE

FILE NAME =	USER NAME = verenskifa	DESIGNED -	REVISED -	STATE OF ILLINOIS DEPARTMENT OF TRANSPORTATION	PRE-MFG HIGHWAY STANDARD 630001-06 STEEL PLATE BEAM EFFECTIVE 4-1-06	F.A.*	SECTION	COUNTY	TOTAL	SHEET	
pwz\VL084EBIDINTEG.illinois.gov:PWIDOT\Documents\SIDOT_Offices\District 6\Projects\D672J96\CADDData\CAD\DRAWN2196-shi-630001-06_SPBGR_STD.dgn		CHECKED -	REVISED -			RTÉ.	**	VARIOUS	17	8	
PLOT SCALE = 26.0000 ' / in.		DATE -	REVISED -			CONTRACT NO. 72J96		ILLINOIS FED. AID PROJECT			
Default						SCALE:	SHEET 3 OF 4 SHEETS	STA.	TO STA.		

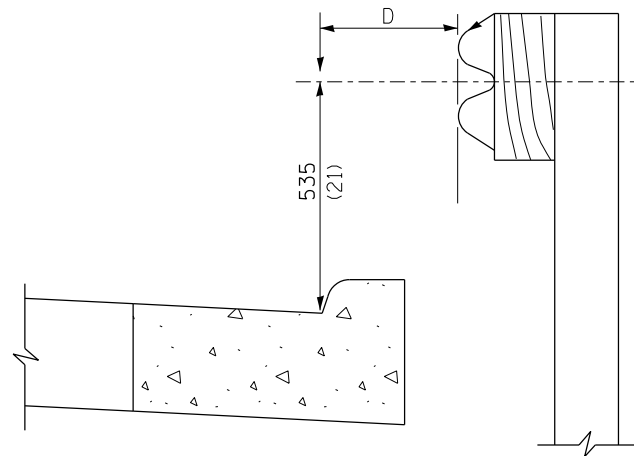


PLAN



ELEVATION

FOOTING FOR POST WHEN IMPERVIOUS MATERIAL IS ENCOUNTERED

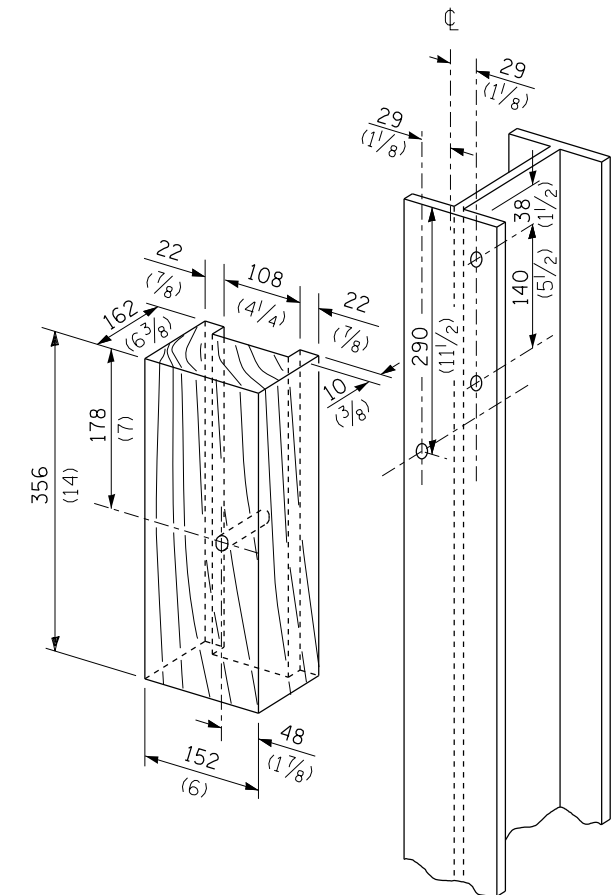


Note:
If it is necessary for D to be more than 300 (12) and less than 3.0 m (10'-0") type M-5 (M-2) curb and gutter (Std. 606001) shall be used in front of and in advance of the guardrail.

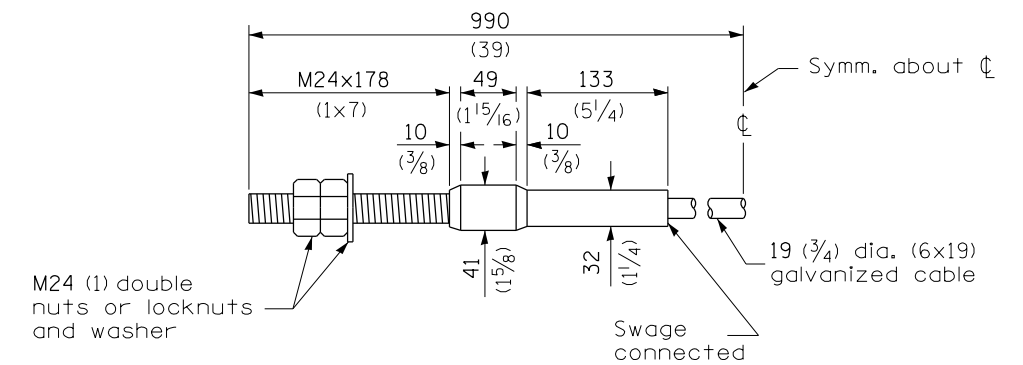
GUARDRAIL PLACED BEHIND CURB

(D = 0 desirable to 300 (12) maximum)

V	W	L	
		Steel Post	Wood Post
0 - 460 (0 - 18)	610 (24)	530 (21)	580 (23)
>460 - 825 (>18 - 41.5)	305 (12)	203 (8)	250 (10)
>825 - 1.13 m (>41.5 - 53.5)	305 - 0 (12 - 0)	203 (8)	250 (10)

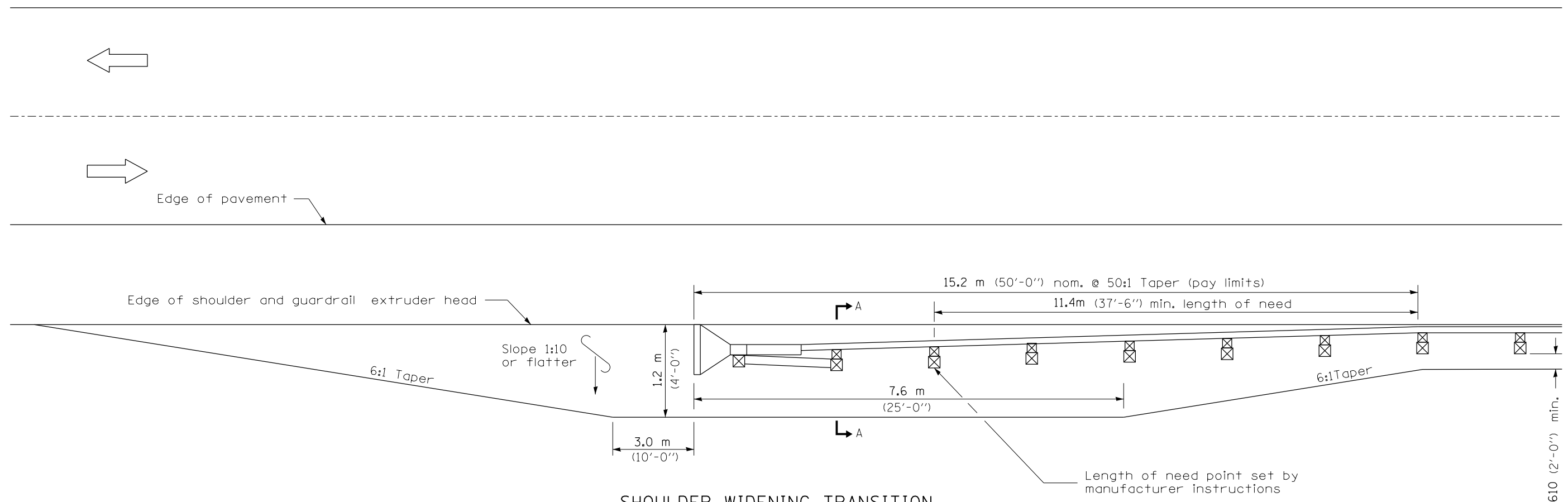


WOOD BLOCK-OUT AND STEEL POST DETAILS

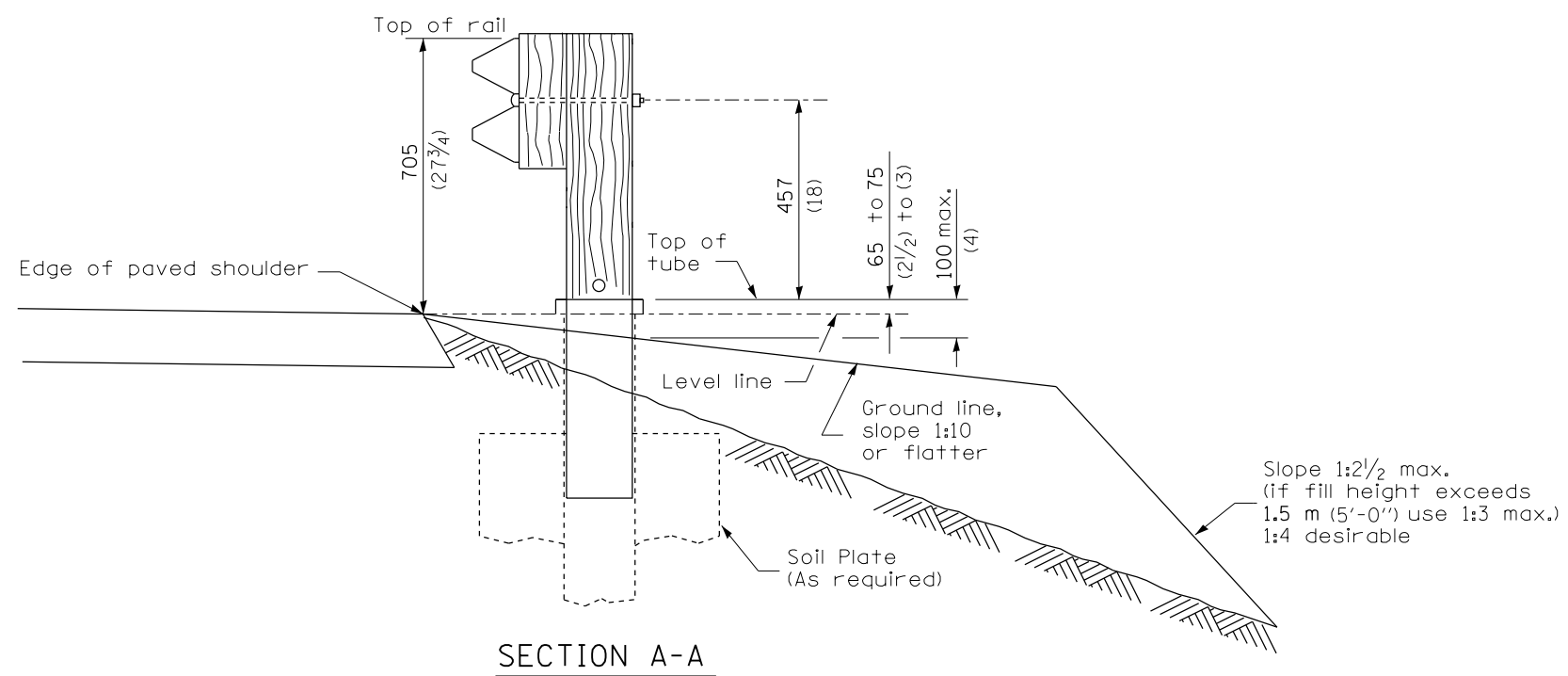


CABLE ASSEMBLY

(18,100 kg (40,000 lbs.) min. breaking strength)
Tighten to taut tension.



**SHOULDER WIDENING TRANSITION
FOR TANGENT TERMINAL**

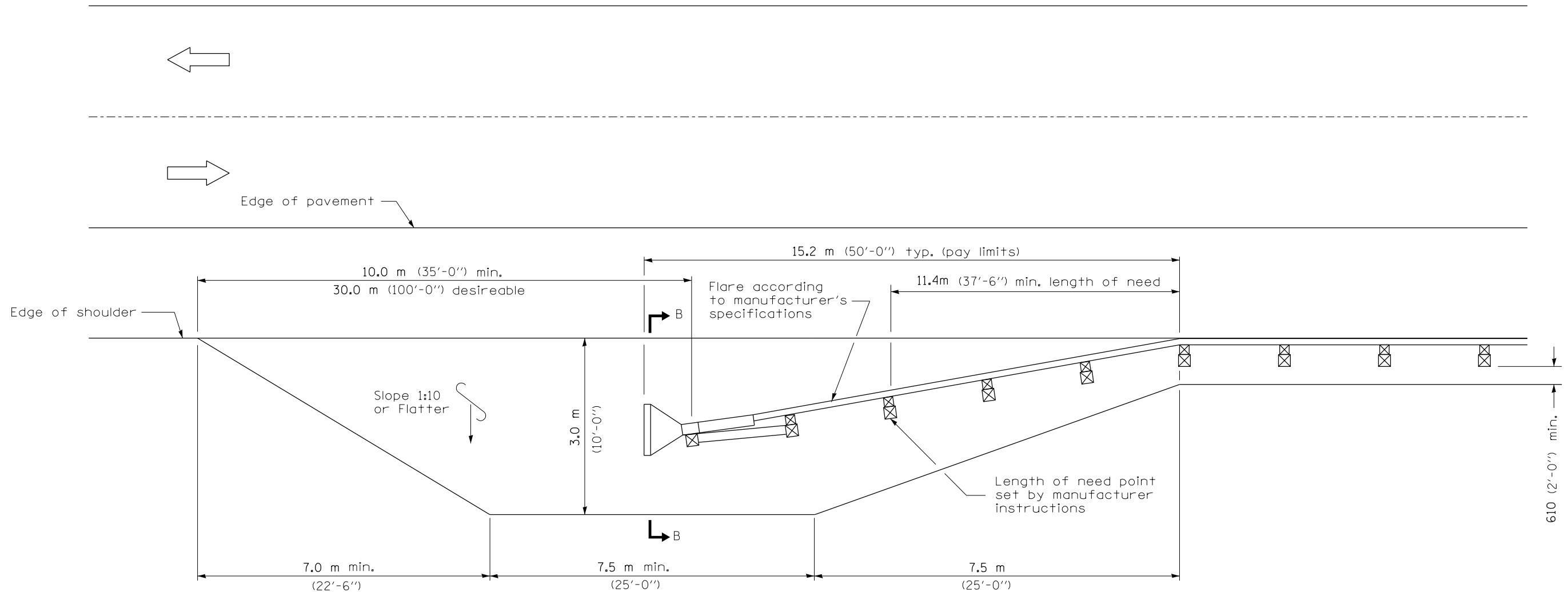


SECTION A-A

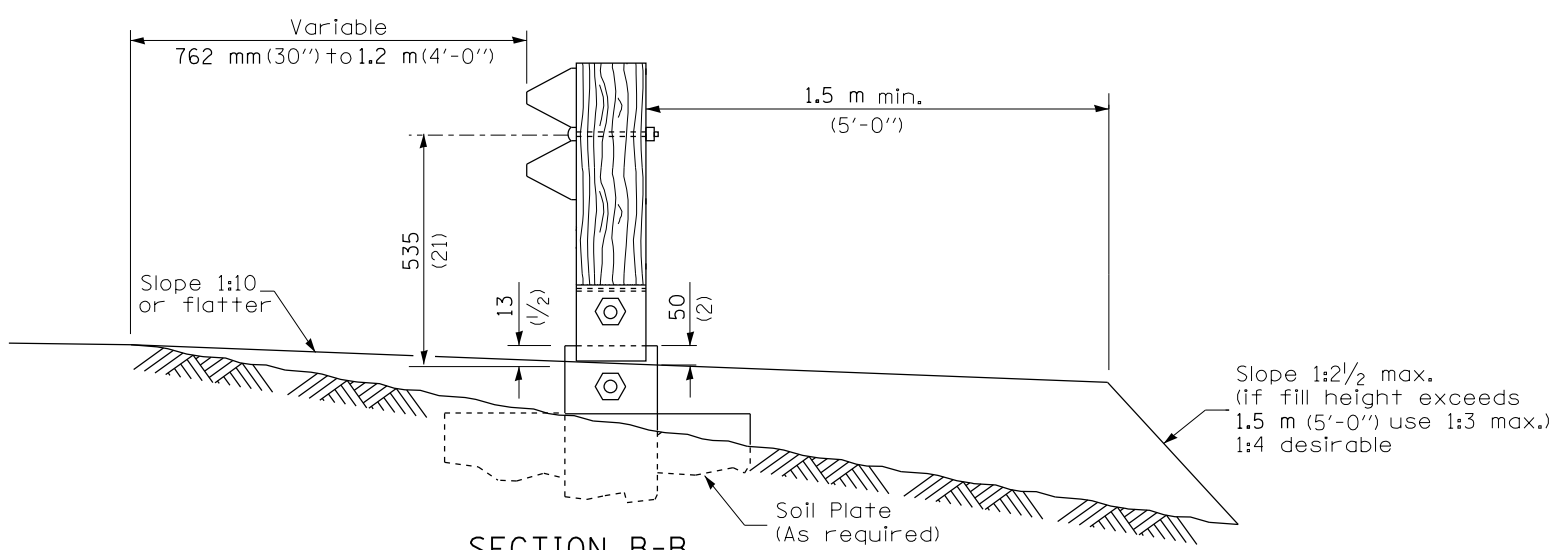
GENERAL NOTES

50:1 Taper required so the guardrail head will not encroach on the shoulder.

FILE NAME =	USER NAME = verenskifa	DESIGNED -	REVISED -	STATE OF ILLINOIS DEPARTMENT OF TRANSPORTATION	PRE-MGS HIGHWAY STANDARD 630301-03 SHOULDER WID. FOR TYPE 1 (SPL) GUARDRAIL TERMINAL EFFECTIVE 4-1-06				F.A.* RTE.	SECTION	COUNTY	TOTAL SHEETS	SHEET NO.		
pwz\VL084EBID\INTEG.illinois.gov:PWIDOT\Documents\SI\DOT_Offices\District 6\Projects\D672J96\CADData\CAD\DRAWN 2196-shl-630301-03_SHLD_WID_GR_TERM		CHECKED -	REVISED -		SCALE:	SHEET 1	OF 2	SHEETS	STA.	TO STA.	ILLINOIS	FED. AID PROJECT	VARIOUS	17	10
Default	PLOT SCALE = 26.0000 "/td> <td>DATE -</td> <td>REVISED -</td> <td colspan="9" style="text-align: right;">**D6 CABLE GUARDRAIL 2017-4</td>	DATE -	REVISED -		**D6 CABLE GUARDRAIL 2017-4										
	PLOT DATE = 3/28/2018														



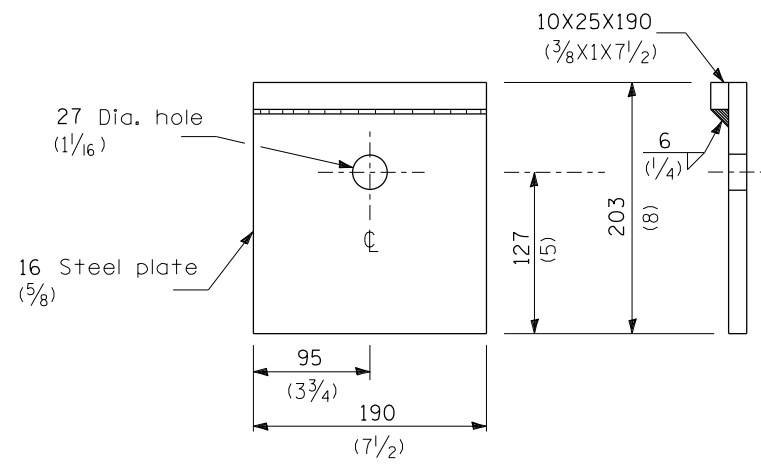
**SHOULDER WIDENING TRANSITION
FOR FLARED TERMINAL**



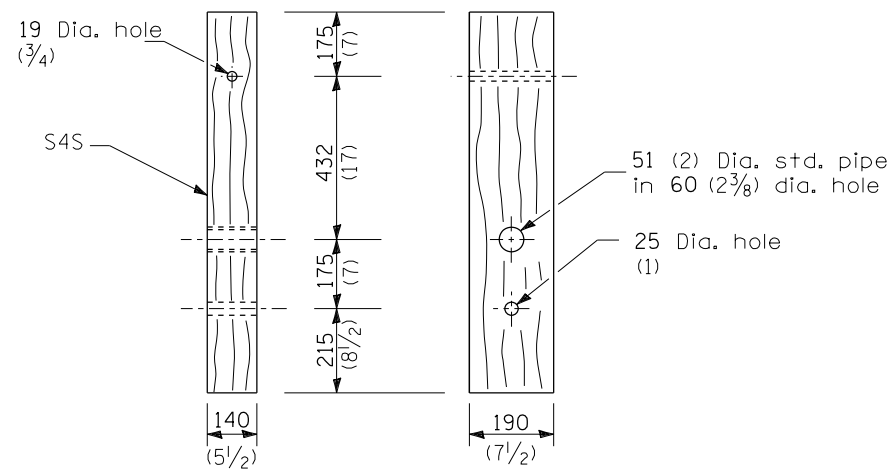
SECTION B-B
(End section omitted for clarity.)

FILE NAME =	USER NAME = verenskifa	DESIGNED -	REVISED -	STATE OF ILLINOIS DEPARTMENT OF TRANSPORTATION	PRE-MGS HIGHWAY STANDARD 630301-03 SHOULDER WID. FOR TYPE 1 (SPL) GUARDRAIL TERMINAL EFFECTIVE 4-1-06			F.A. RTE.	SECTION	COUNTY	TOTAL SHEETS	SHEET NO.			
pwz\VL084EBID\INTEG.illinois.gov\PWIDOT\Documents\	SIDOT Offices\District 6\Projects\D672J96\CADData\CAD	DRAWN 2/196-shi-630301-03_SHLD_WID_GR_TERM	REVISED -		SCALE:	SHEET 2	OF 2	SHEETS	STA.	TO STA.	ILLINOIS	FED. AID PROJECT	VARIOUS	17	11
Default	PLOT SCALE = 26.0000 ' / in.	CHECKED -	REVISED -								CONTRACT NO. 72J96				
	PLOT DATE = 3/28/2018	DATE -	REVISED -												

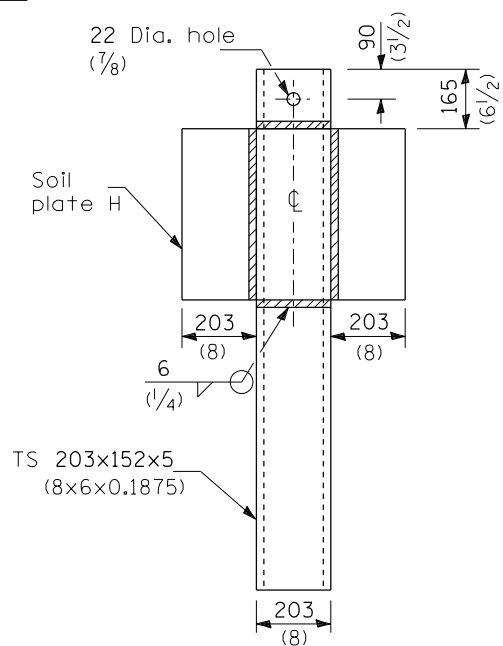
**D6 CABLE/GUARDRAIL 2017-4



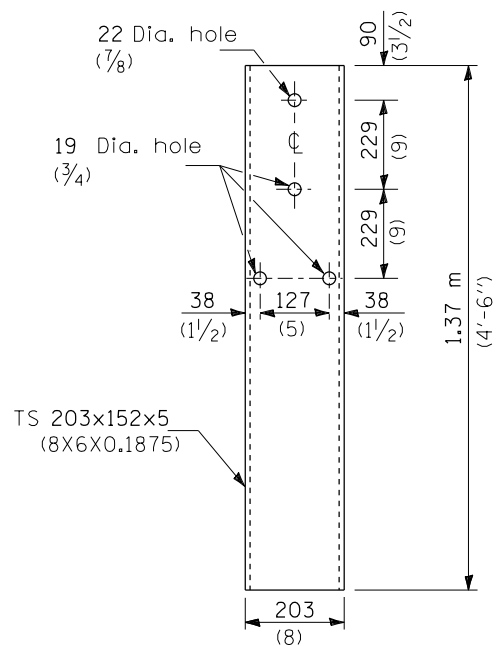
BEARING PLATE K



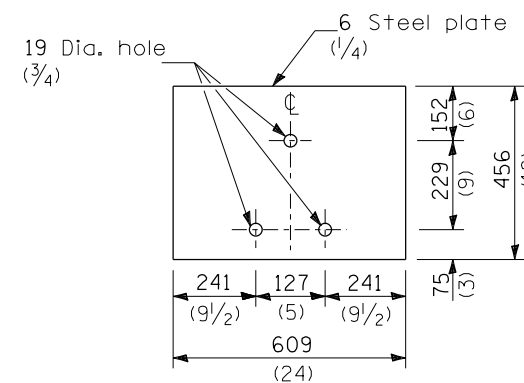
WOOD POST



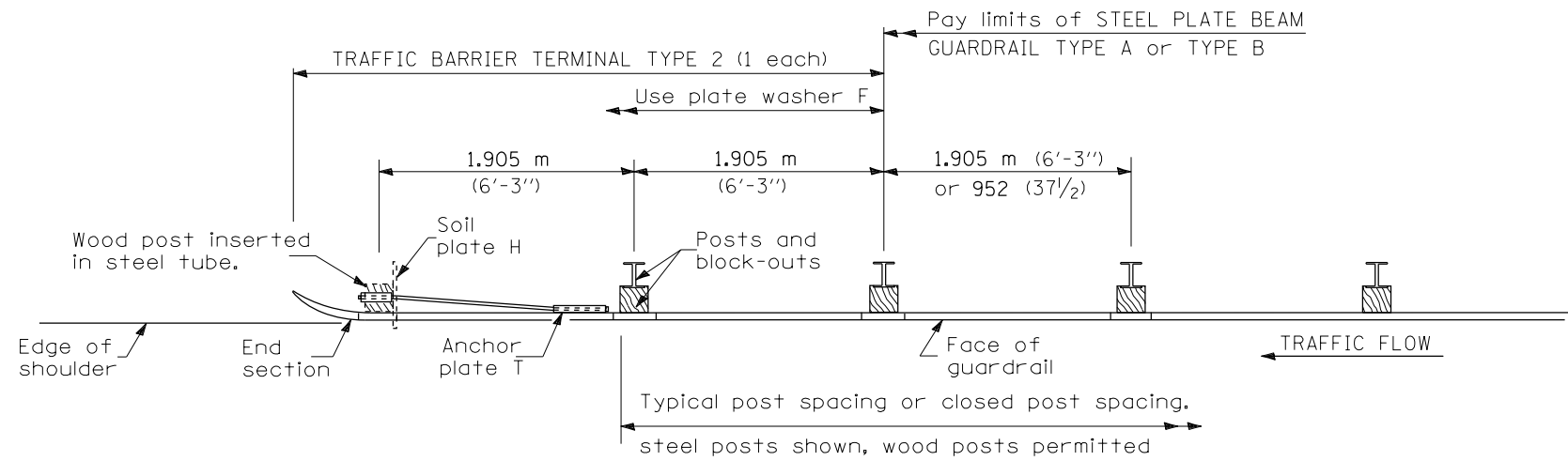
ALTERNATE SOIL PLATE CONNECTION



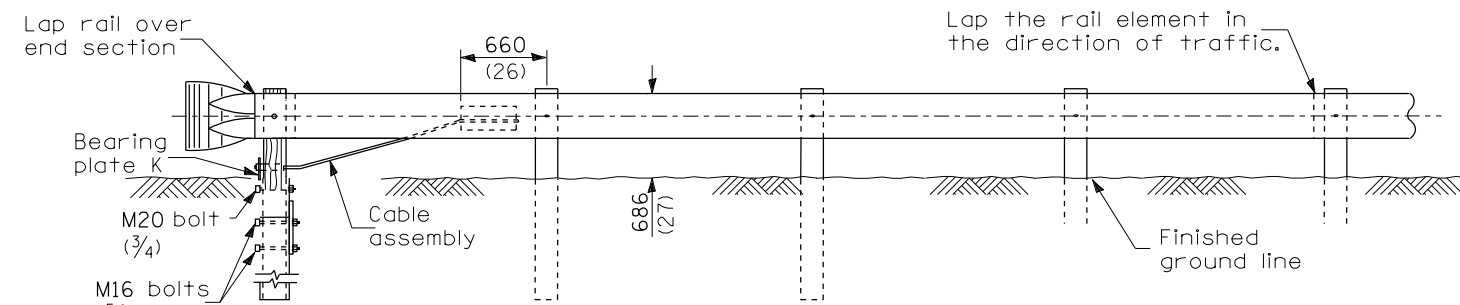
STEEL TUBE



SOIL PLATE H



PLAN



ELEVATION

GENERAL NOTES

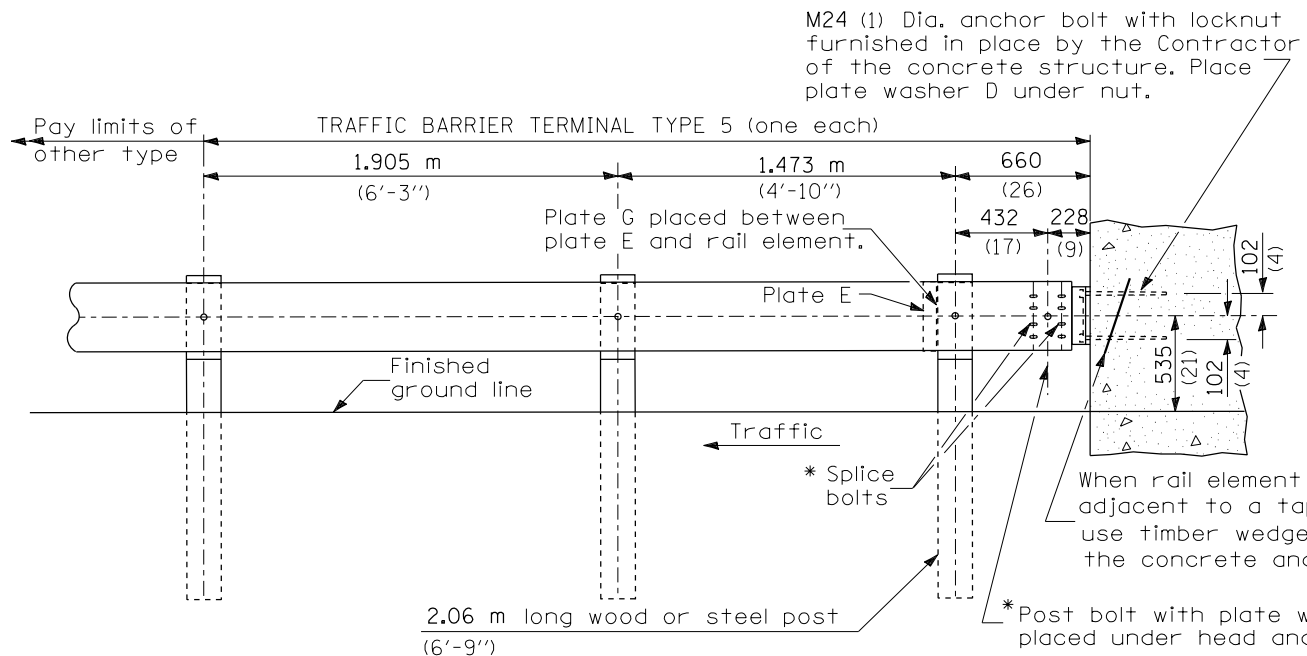
See Standard 630001 for details of guardrail not shown.

Use plate washer F at all posts.

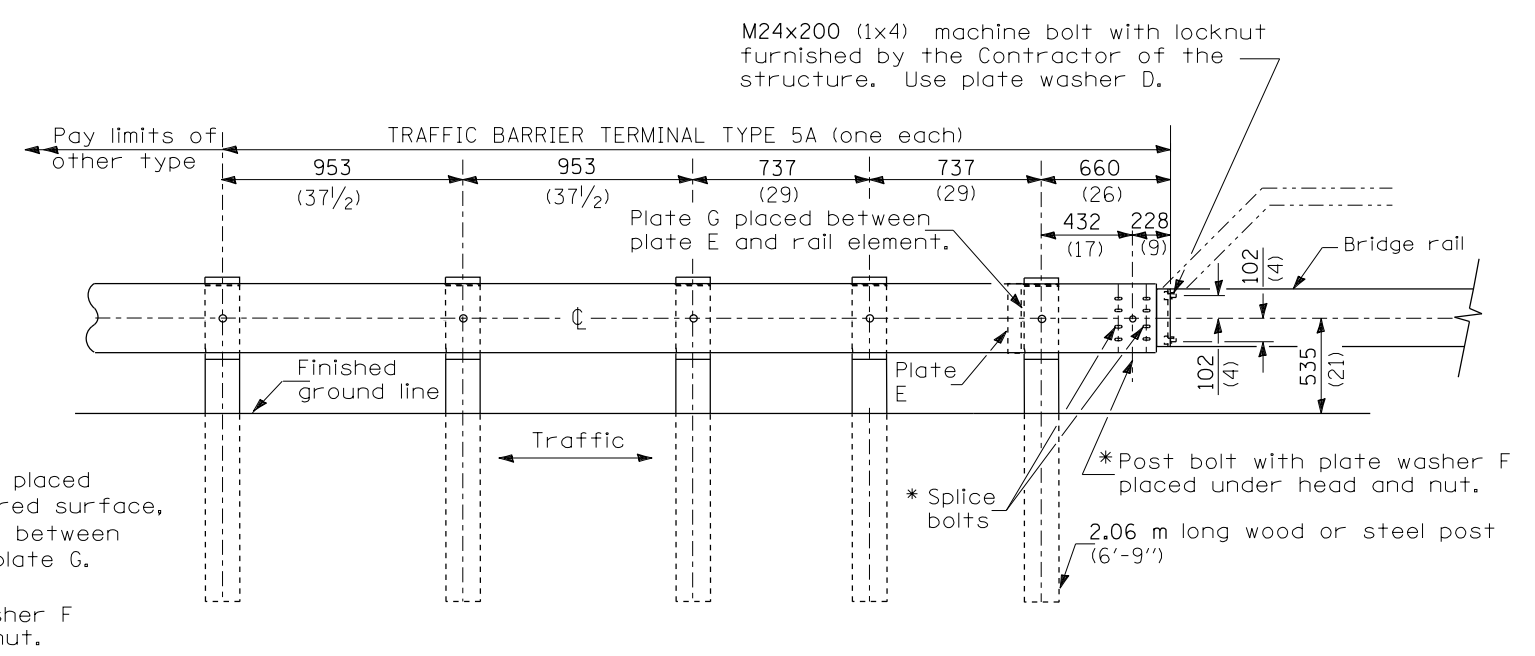
The bearing plate K shall be held in position by (2) two eight penny nails driven into the post and bent over the top of the plate.

All dimensions are in millimeters (inches) unless otherwise shown.

FILE NAME =	USER NAME = verenskifa	DESIGNED -	REVISED -	STATE OF ILLINOIS DEPARTMENT OF TRANSPORTATION	PRE-MGS HIGHWAY STANDARD 631011-02 TRAFFIC BARRIER TERMINAL, TYPE 2 EFFECTIVE 4-1-06	F.A.*	SECTION	COUNTY	TOTAL	SHEET
pwz\VL084EBIDINTEG.illinois.gov:PWIDOT\Documents\IDOT Offices\District 6\Projects\D672J96\CADDData\CAD\DRAWN 2196-shi-631011-02_TRAF_BAR_TERM_T2.dwg	PLT SCALE = 26.0000 "/td> <td>CHECKED -</td> <td>REVISED -</td> <td>RTE.</td> <td>**</td> <td>VARIOUS</td> <td>17</td> <td>12</td>	CHECKED -	REVISED -			RTE.	**	VARIOUS	17	12
Default	PLT DATE = 3/28/2018	DATE -	REVISED -			VAR		CONTRACT NO. 72J96		
						SHEET 1	OF 1	SHEETS	STA.	TO STA.



TYPE 5 - CONCRETE BRIDGE PARAPET



TYPE 5A - STEEL BRIDGE RAIL

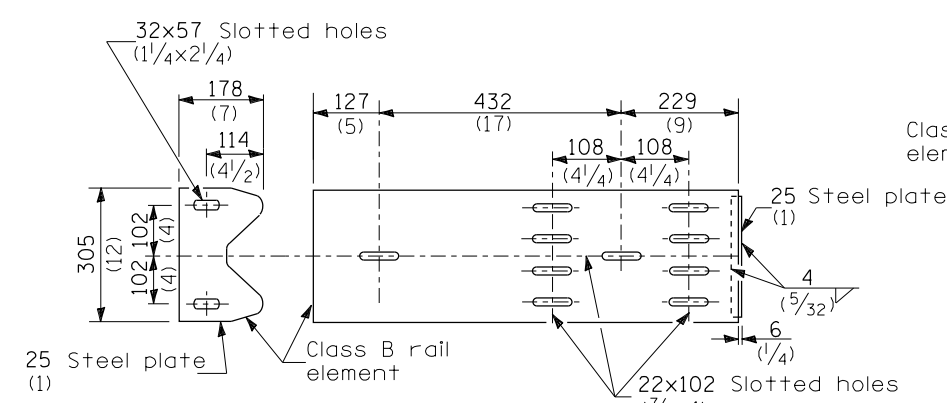


PLATE G

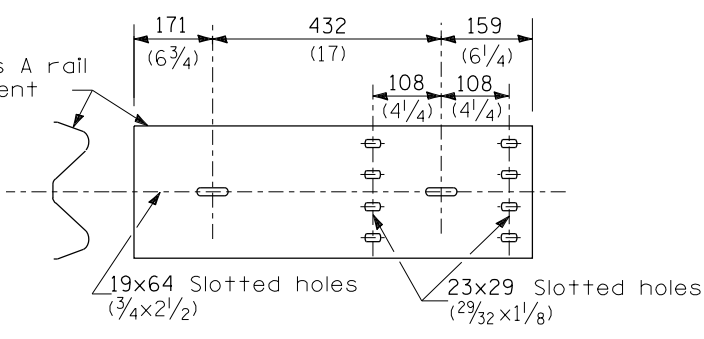
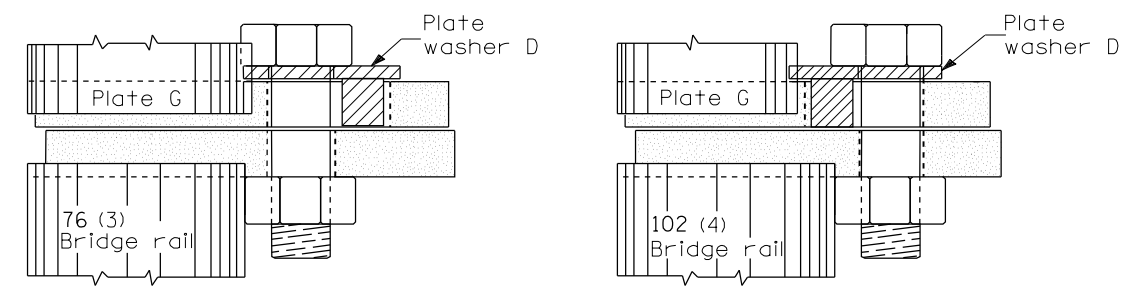


PLATE E



PLACEMENT OF PLATE WASHER D (PLAN)

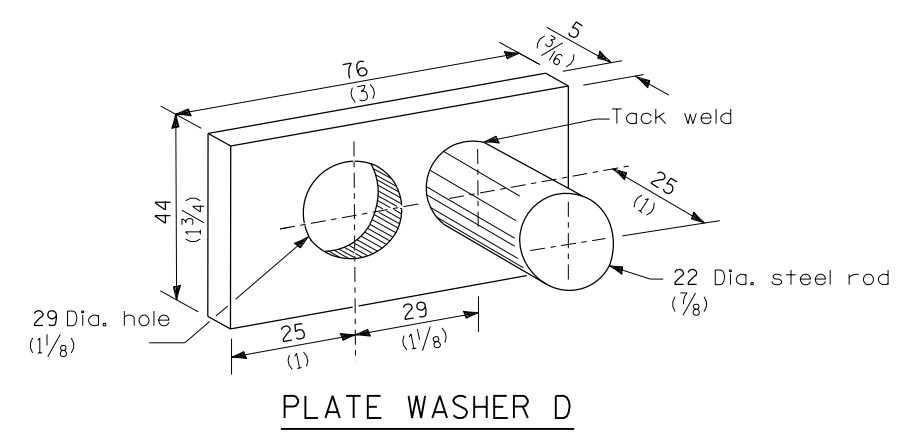
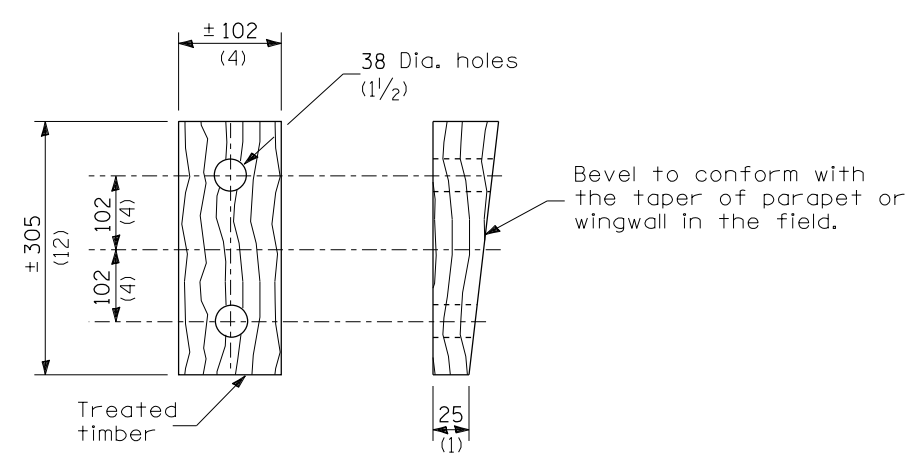


PLATE WASHER D

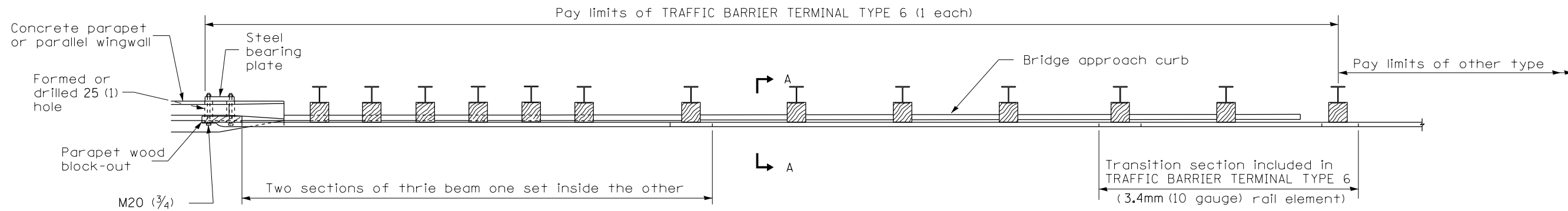


WEDGE M

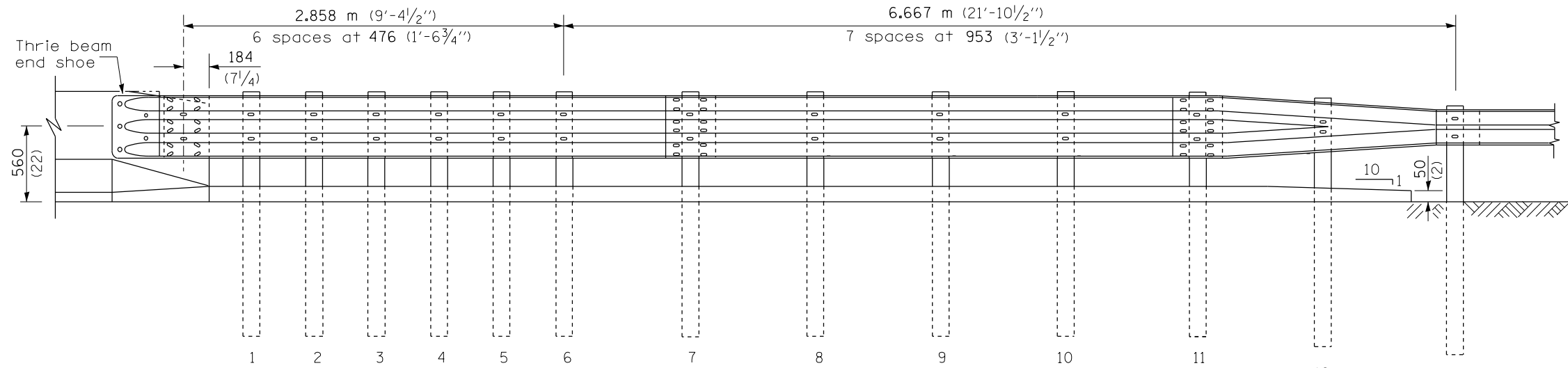
GENERAL NOTES

- Install plate washer D so that the 25 mm (1") projection fills the remainder of the slotted holes in the 25 mm (1") end plate on plate G after the M24 (1") dia. bolts are in place.
- * Bolts shall be provided with locknut or double nut and shall be tightened only to a point that will allow plate G to be free to move when an expansion joint exists below the connector.
- See Standard 630001 for details of guardrail not shown.
- All dimensions are in millimeters (inches) unless otherwise shown.

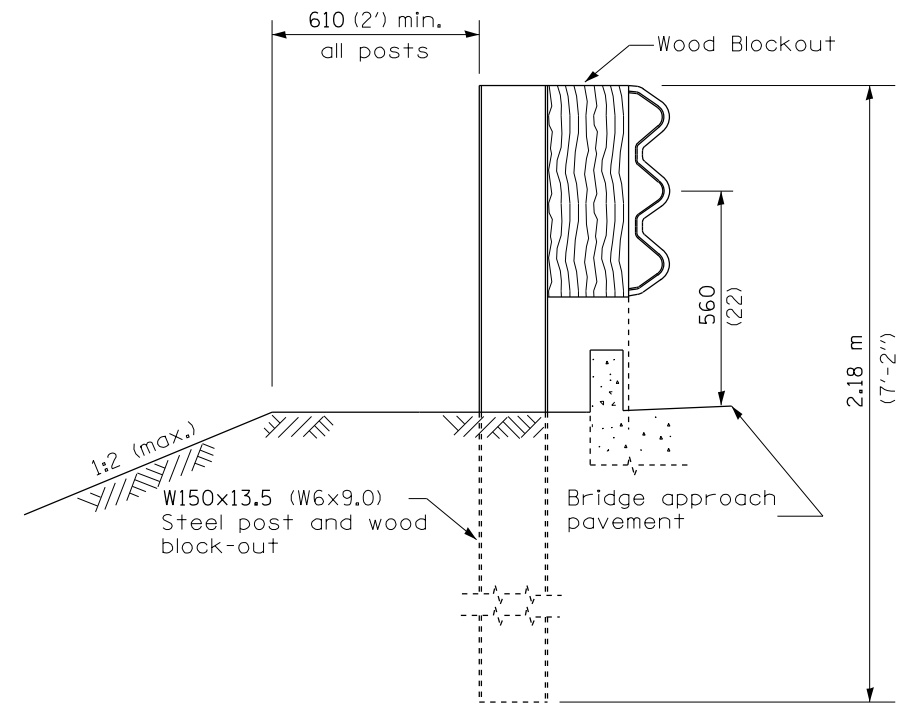
FILE NAME =	USER NAME = verenskifa	DESIGNED -	REVISED -	STATE OF ILLINOIS DEPARTMENT OF TRANSPORTATION	PRE-MGS HIGHWAY STANDARD 631026-02 TRAFFIC BARRIER TERMINAL, 5 & 5A EFFECTIVE 4-1-06	F.A. RTE.	SECTION	COUNTY	TOTAL SHEETS	SHEET NO.	
pwz\IL084EBID\INTEG\Illinois.gov\PWIDOT\Documents\IDOT Offices\District 6\Projects\ID672196\CADD\DATA\CAD\DRAWN 2196-sh-631026-02_TRAF_BAR_TERM_5A	SIDOT Offices\District 6\Projects\ID672196\CADD\DATA\CAD\DRAWN 2196-sh-631026-02_TRAF_BAR_TERM_5A	CHECKED -	REVISED -			*VAR	**	VARIOUS	17	13	
PLOT SCALE = 26.0000 "/in.	CHECKED -	REVISED -	REVISED -			CONTRACT NO. 72196					
Default	PLOT DATE = 3/28/2018	DATE -	REVISED -			SCALE:	SHEET 1 OF 1 SHEETS	STA.	TO STA.	ILLINOIS FED. AID PROJECT	



PLAN



ELEVATION

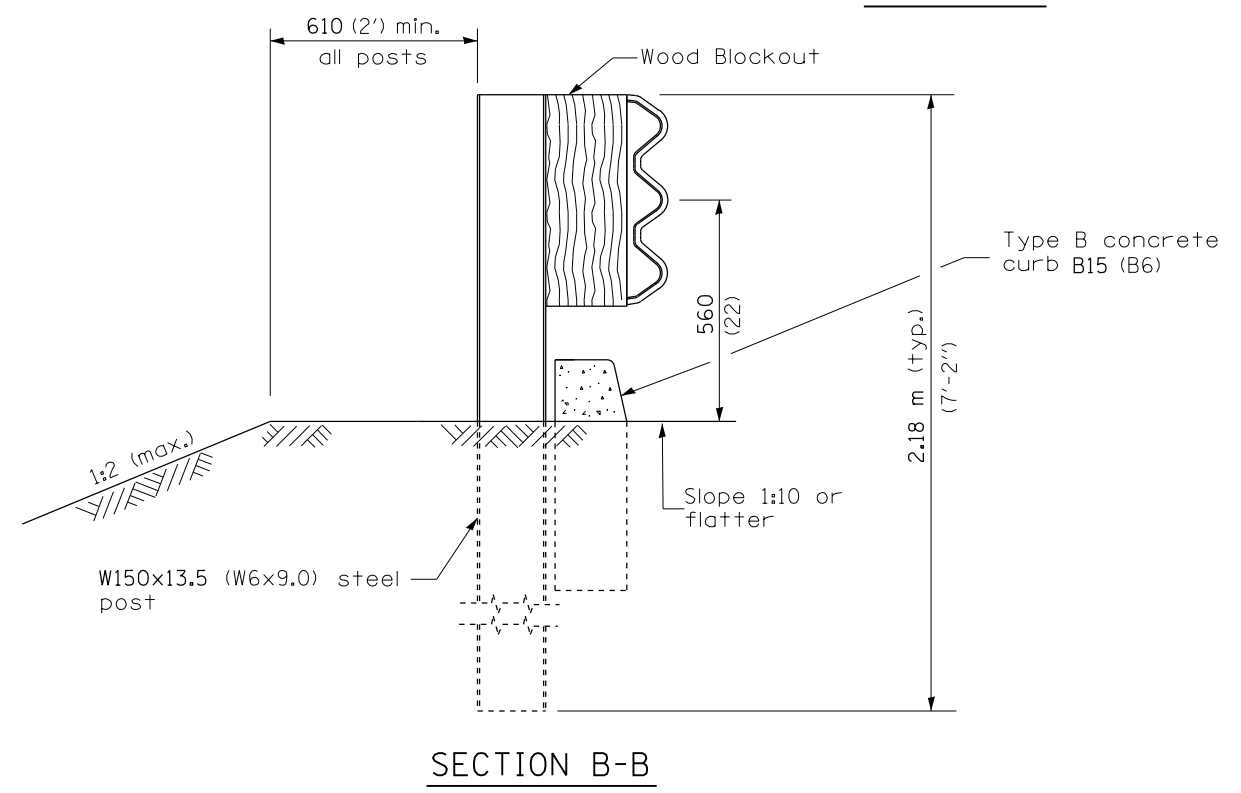
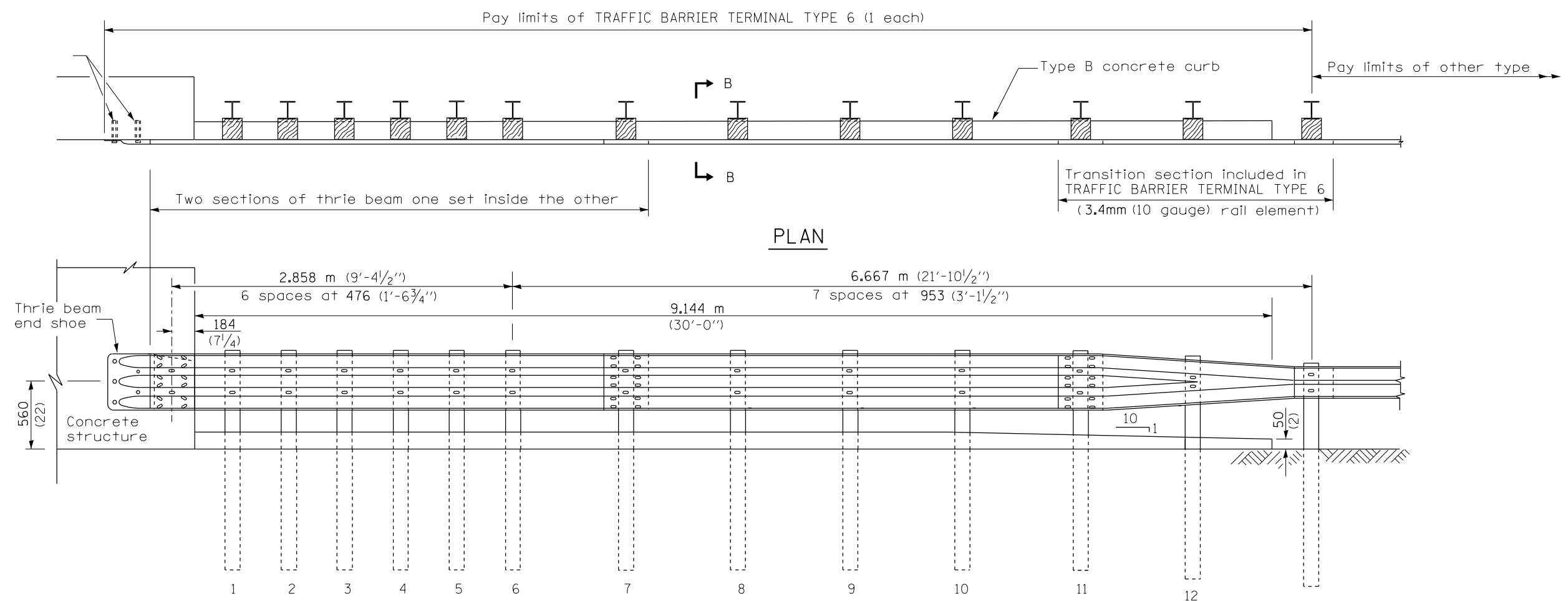


SECTION A-A

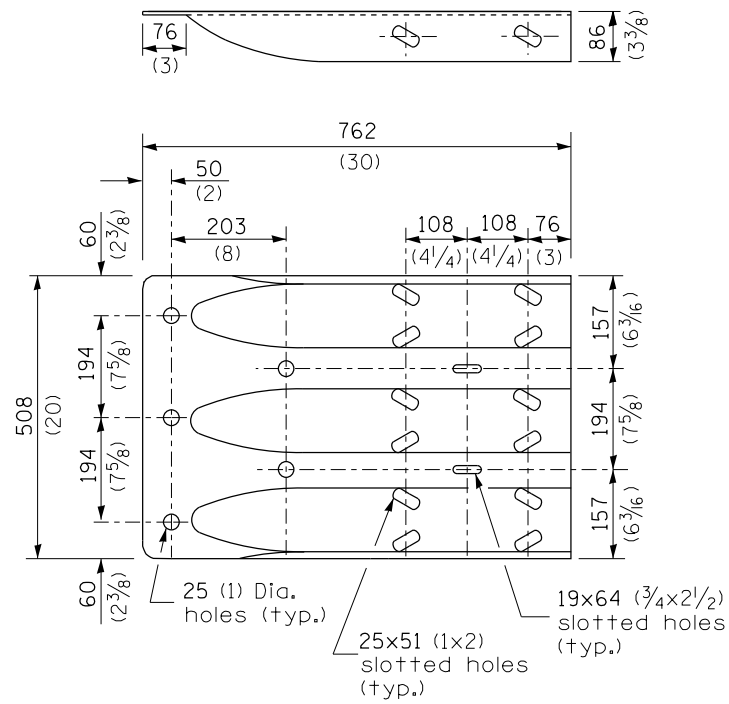
GENERAL NOTES

- See Standard 630001 for details of guardrail not shown.
- Thrie beam rail shall be bolted to block-out at all posts.
- See Standard 420401 for details of bridge approach pavement.
- All slope ratios are expressed as units of vertical displacement to units of horizontal displacement (V:H).
- All dimensions are in millimeters (inches) unless otherwise shown.

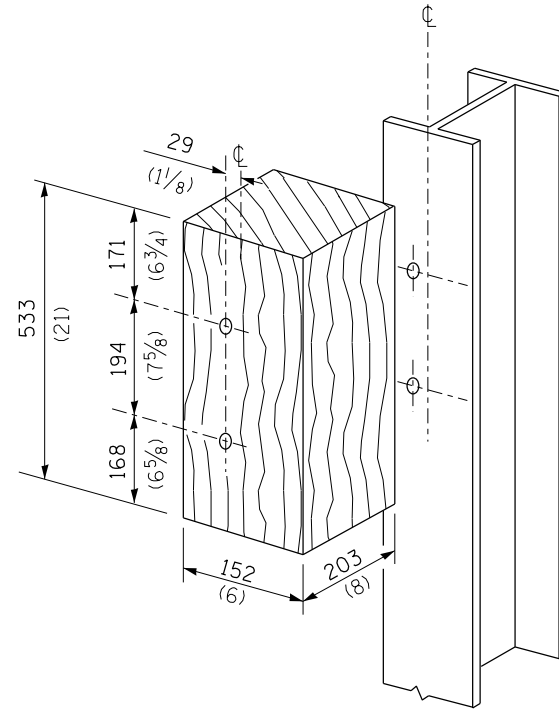
FILE NAME =	USER NAME = verenskifa	DESIGNED -	REVISED -	STATE OF ILLINOIS DEPARTMENT OF TRANSPORTATION	PRE-MGS HIGHWAY STANDARD 631031-05 TRAFFIC BARRIER TERMINAL, TYPE 6 EFFECTIVE 4-1-06	F.A. RTE.	SECTION	COUNTY	TOTAL SHEETS	SHEET NO.
pwz\VL084EBIDINTEG.illinois.gov:PWIDOT\Documents\SIDOT Offices\District 6\Projects\D672J96\CADDData\CAD\DRAWN2196-shi-631031-05_TRAF_BAR_TERM_T6	DESIGNED -	REVISED -	**			VARIOUS	17	14		
PLOT SCALE = 26.0000 ' / in.	CHECKED -	REVISED -	CONTRACT NO. 72J96							
Default	DATE -	REVISED -	SHEET 1 OF 3 SHEETS			STA.	TO STA.	ILLINOIS FED. AID PROJECT		



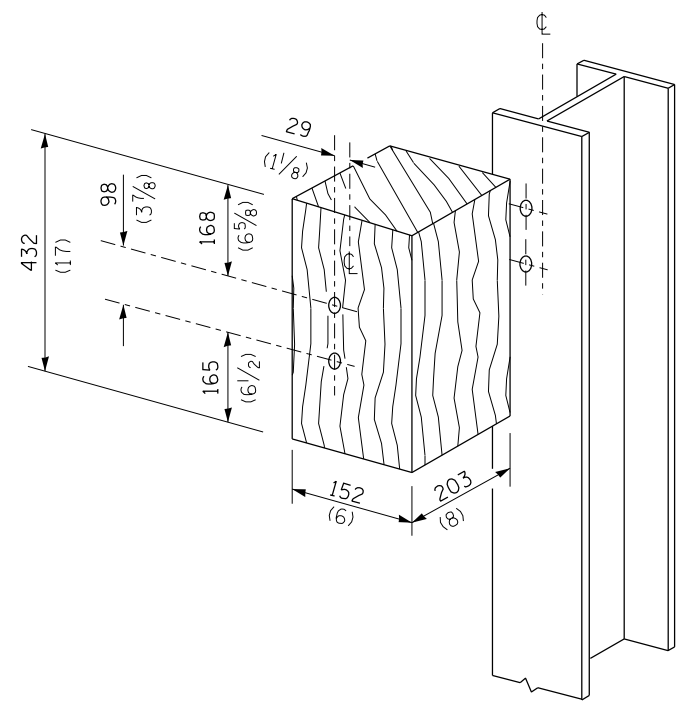
FILE NAME =	USER NAME = verenskifa	DESIGNED -	REVISED -	STATE OF ILLINOIS DEPARTMENT OF TRANSPORTATION	PRE-MGS HIGHWAY STANDARD 631031-05 TRAFFIC BARRIER TERMINAL, TYPE 6 EFFECTIVE 4-1-06	F.A. RTE.	SECTION	COUNTY	TOTAL SHEETS	SHEET NO.
pwz\1084EBIDINTEG.illinois.gov:PWIDOT\Documents\110DOT Offices\District 6\Projects\D672196\CADDData\CAD\DRAWN2196-shi-631031-05_TRAF_BAR_TERM_6.dwg	DESIGNED -	REVISED -	**			VARIOUS	17	15		
PLOT SCALE = 26.0000 1/ in.	CHECKED -	REVISED -	CONTRACT NO. 72196							
Default	DATE -	REVISED -	ILLINOIS FED. AID PROJECT							
					SHEET 2 OF 3 SHEETS	STA.	TO STA.	**D6 CABLE/GUARDRAIL 2017-4		



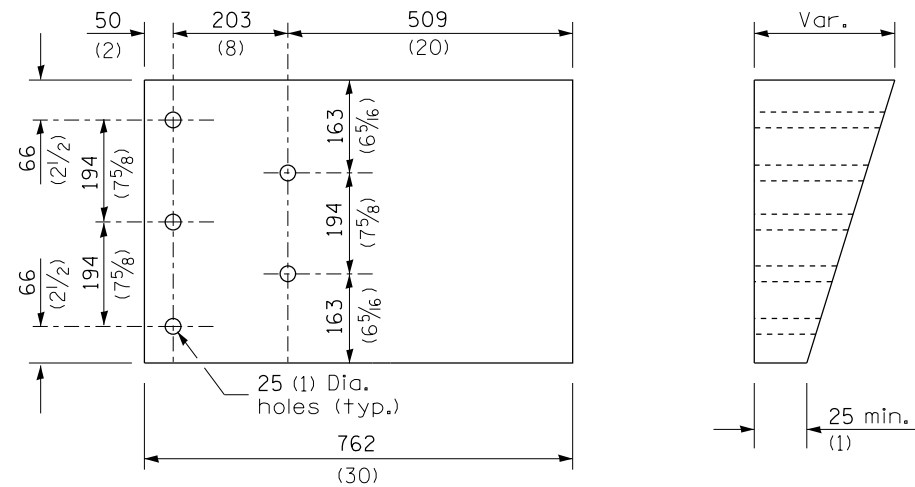
THRIE BEAM END SHOE DETAIL



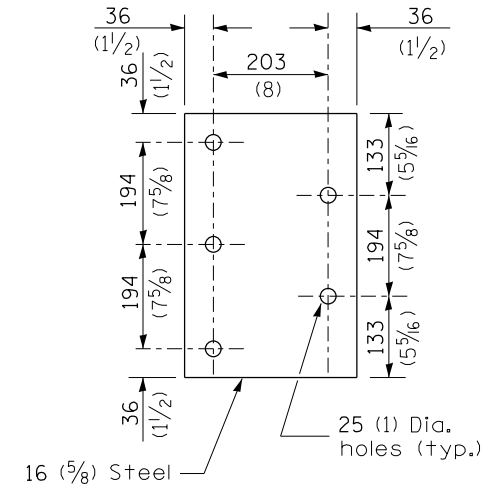
POSTS 1-11 WOOD BLOCKOUT DETAIL



POST 12 WOOD BLOCKOUT DETAIL



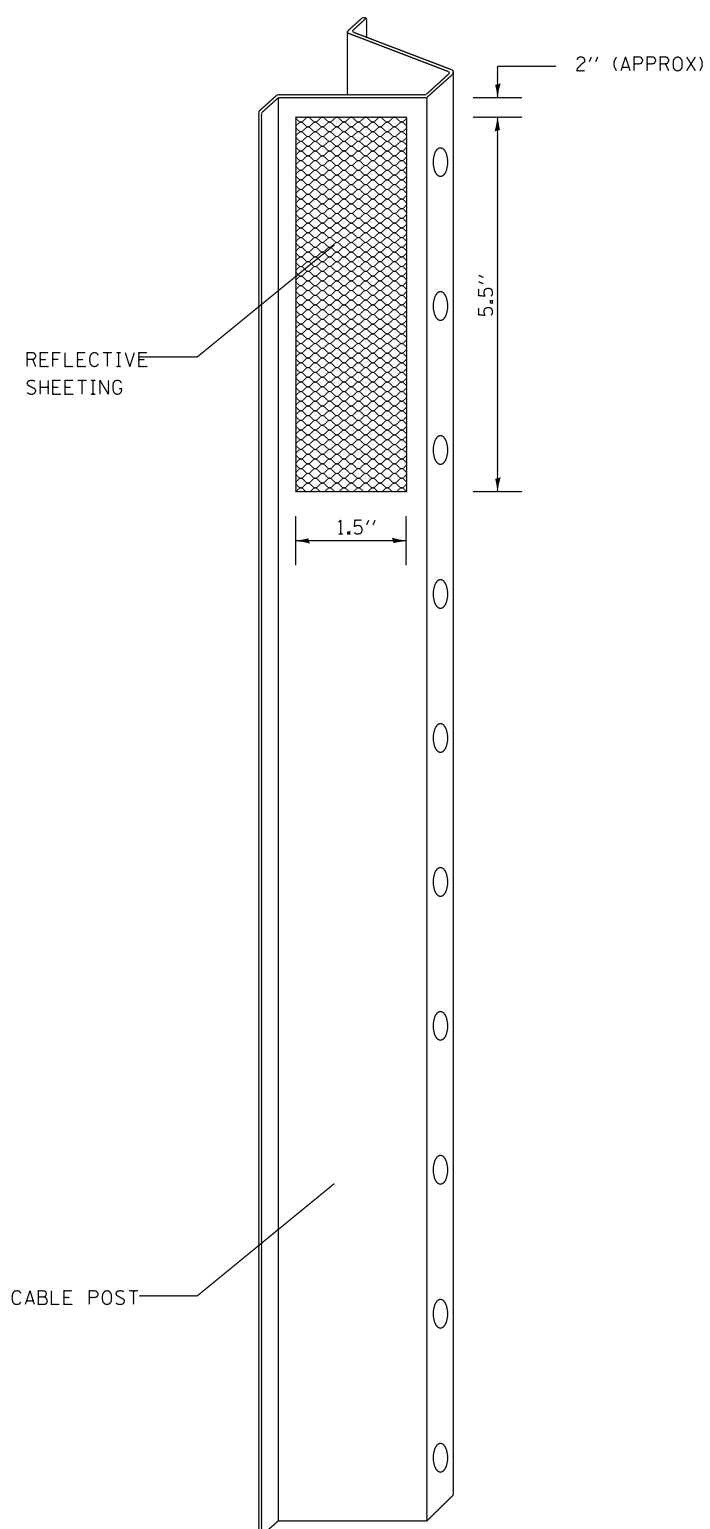
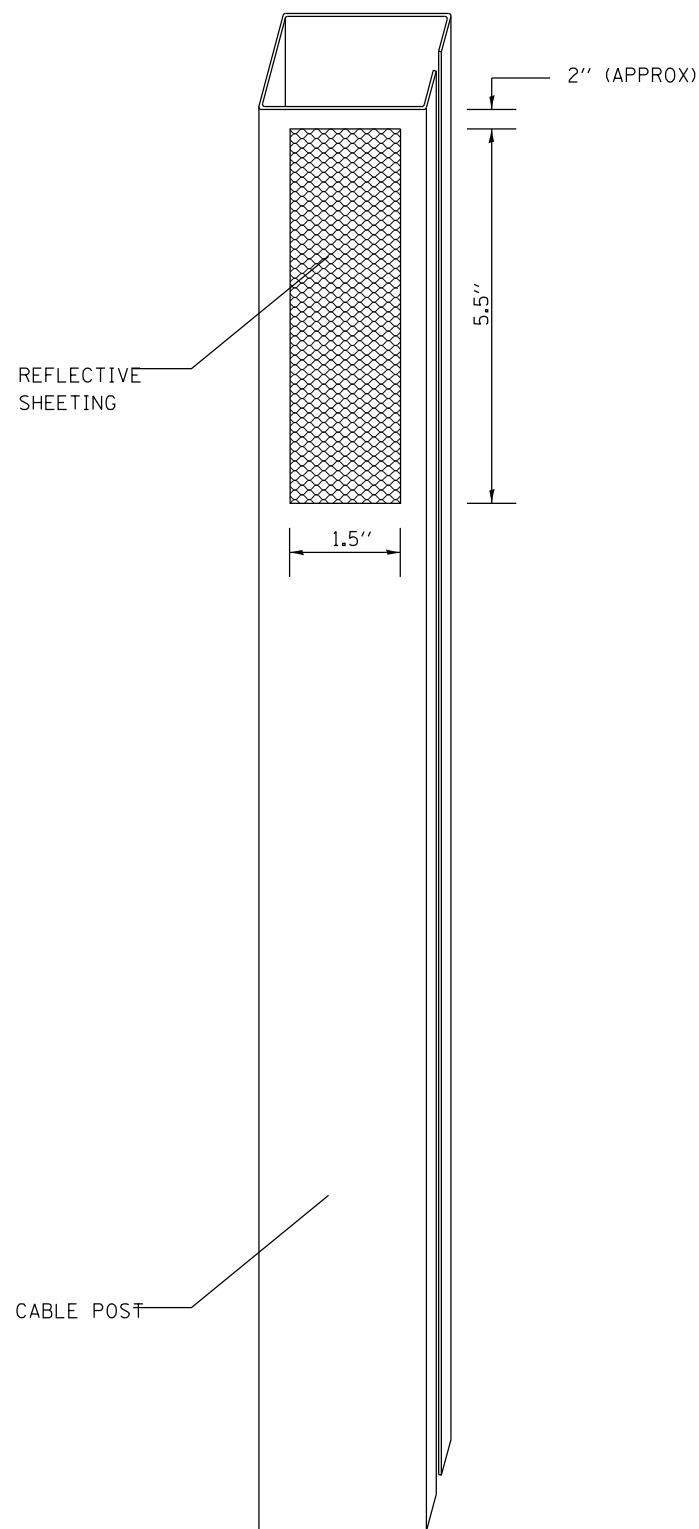
PARAPET WOOD BLOCK-OUT DETAIL



PARAPET STEEL BEARING PLATE DETAIL

(5 each individual 125x125x16 (5x5x5/8) steel plates with centered 25 (1) holes may be substituted for the plate shown.)

FILE NAME =	USER NAME = verenskifa	DESIGNED -	REVISED -	STATE OF ILLINOIS DEPARTMENT OF TRANSPORTATION	PRE-MGS HIGHWAY STANDARD 631031-05 TRAFFIC BARRIER TERMINAL, TYPE 6 EFFECTIVE 4-1-06	F.A. RTE.	SECTION	COUNTY	TOTAL SHEETS	SHEET NO.
pwz\VL084EBID\INTEG.illinois.gov\PWIDOT\Documents\DOT Offices\District 6\Projects\D672J96\CADDData\CAD\DRAWN2196-shi-631031-05_TRAF_BAR_TERM_T6.dwg	PROJECT = 2196-shi-631031-05_TRAF_BAR_TERM_T6	CHECKED -	REVISED -			*VAR	**	VARIOUS	17	16
PLOT SCALE = 26.0000 ' / in.	DATE -	REVISED -	REVISED -			CONTRACT NO. 72J96				
Default	PLOT DATE = 3/28/2018	DATE -	REVISED -			SHEET 3 OF 3 SHEETS	STA.	TO STA.	ILLINOIS FED. AID PROJECT	



NOTES:

MATERIAL: THE MATERIAL SHALL BE IN ACCORDANCE WITH SECTION 1090 AND 1091 OF THE STANDARD SPECIFICATIONS.

CONSTRUCTION REQUIREMENTS: THE REFLECTIVE SHEETING SHALL BE INSTALLED DIRECTLY ON THE CABLE POSTS. THE REFLECTIVE SHEETING SHALL BE INSTALLED AS SHOWN IN THE PLANS, ON EVERY OTHER POST (IN ORDER TO PROVIDE A SPACING OF 40'). THE SURFACE OF THE POST SHALL BE CLEANED OF ALL CONTAMINANTS PRIOR TO THE INSTALLATION OF THE REFLECTIVE SHEETING. THE SURFACE SHALL BE CLEANED USING A 5-8 PERCENT PHOSPHORIC ACID SOLUTION AND RINSED WITH CLEAN WATER OR AS RECOMMENDED BY THE MANUFACTURER OF THE REFLECTIVE SHEETING AND AS APPROVED BY THE ENGINEER.

BASIS OF PAYMENT: THIS WORK WILL BE PAID FOR AT THE CONTRACT UNIT PRICE EACH FOR CABLE GUARD MARKER.

FILE NAME =	USER NAME = verenskifa	DESIGNED -	REVISED -	STATE OF ILLINOIS DEPARTMENT OF TRANSPORTATION	CABLE GUARD MARKER DETAIL			F.A.* RTE.	SECTION	COUNTY	TOTAL SHEETS	SHEET NO.
pwz\IL084EBIDINTEG.illinois.gov\PWIDOT\Documents\IDOT_Offices\District 6\Projects\D672J96\CADDData\CAD\DRAWN2J96-shi-CABLE_GRD-MKR.dgn		CHECKED -	REVISED -					**			VARIOUS	17
Default	PLOT SCALE = 100.0000 ' / in.	DATE -	REVISED -		SHEET 1 OF 1 SHEETS STA. TO STA.			ILLINOIS FED. AID PROJECT		CONTRACT NO. 72J96		
	PLOT DATE = 3/28/2018				**D6 CABLE/GUARDRAIL 2017-4							