

ROUTE	SECTION	COUNTY	TOTAL SHEETS	SHEET NO.
F.A.S. 709	14-00095-00-RS	EFFINGHAM	2	1
CONTRACT NO. 95837		ILLINOIS	PROJECT W3WA(844)	

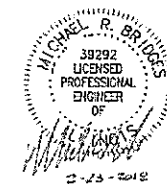
STATE OF ILLINOIS
DEPARTMENT OF TRANSPORTATION
DIVISION OF HIGHWAYS

PLANS FOR PROPOSED
FEDERAL AID SECONDARY PROJECT

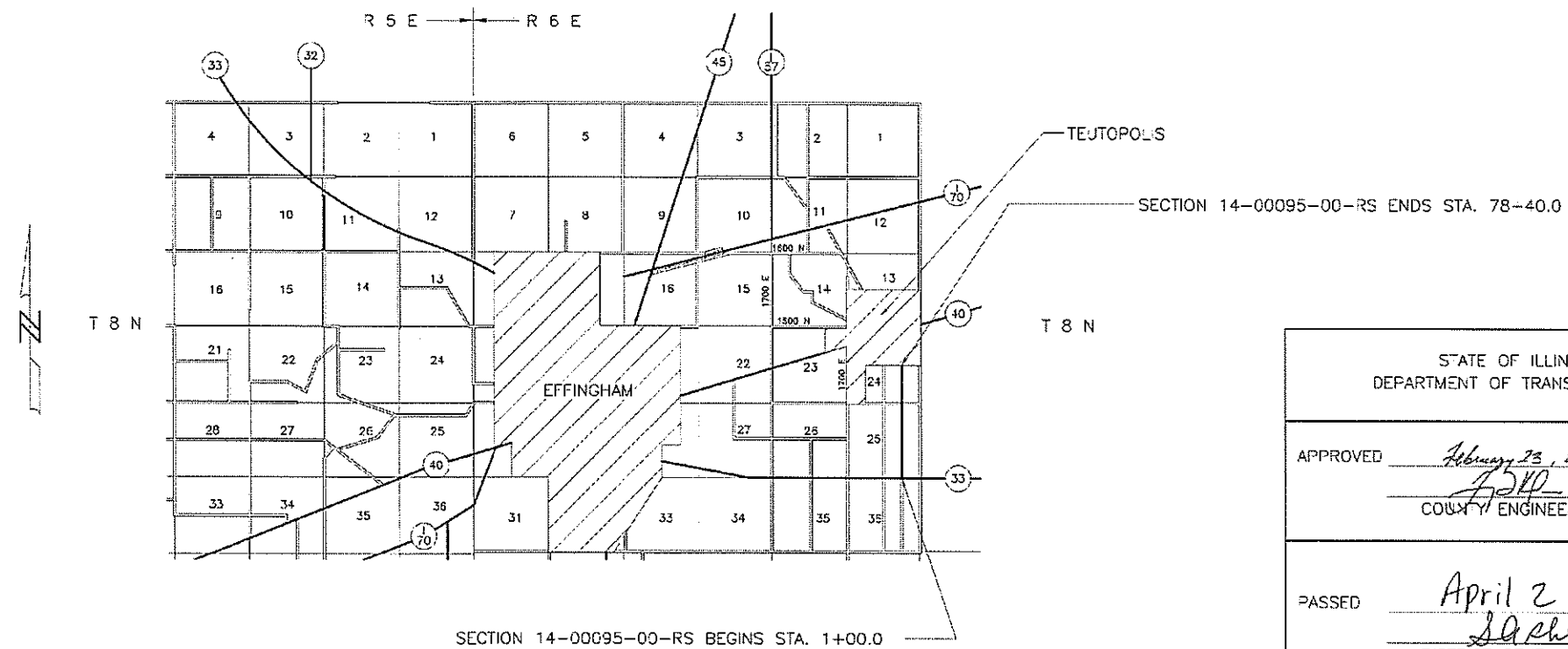
EFFINGHAM COUNTY
SECTION 14-00095-00-RS
F.A.S. 709
COUNTY HIGHWAY 19
JOB NO. C-97-069-18
PROJECT NO. W3WA(844)

INDEX OF SHEETS

SHEET	ITEM
1	COVER SHEET
2	SUMMARY OF QUANTITIES
	STANDARD 00C001-06
	STANDARD 701001-02
	STANDARD 701006-05
	STANDARD 701011-04
	STANDARD 701201-04
	STANDARD 701301-04
	STANDARD 701306-04
	STANDARD 701311-03
	STANDARD 701901-07
	STANDARD 720001-01
	STANDARD 720006-04
	STANDARD 728001-01
	STANDARD 780001-05



LICENSE EXPIRES 11-30-2018



RJRAL MAJOR COLLECTOR
ADT = 2475
DESIGN SPEED = 55 MPH

CONTRACT NO. 95837

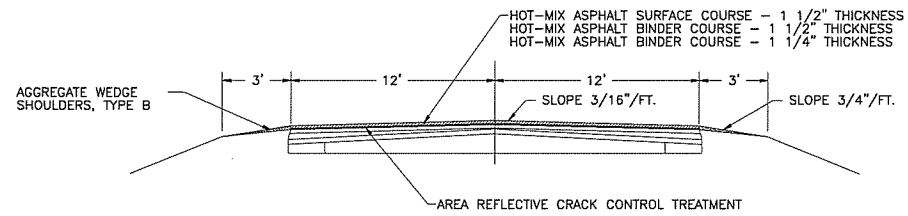
NET LENGTH SECTION 14-00095-00-RS = 7,740.0 Ft. = 1.466 Mi.

Joint Utility Locating Information for Excavators

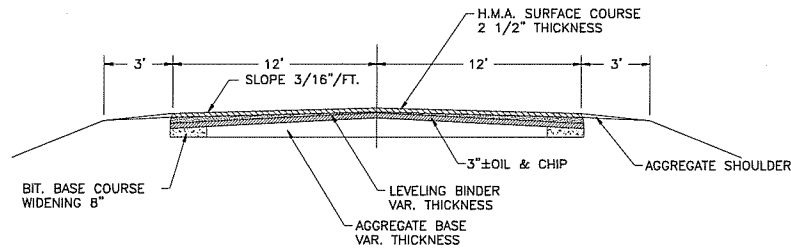
JULIE 1-800-892-0123

STATE OF ILLINOIS DEPARTMENT OF TRANSPORTATION	
APPROVED	<i>February 23, 2018</i> <i>[Signature]</i> COUNTY ENGINEER
PASSED	<i>April 2, 2018</i> <i>[Signature]</i> DISTRICT SEVEN ENGINEER OF LOCAL ROADS AND STREETS
Releasing For Std Based on Limited Review	<i>April 2, 2018</i> <i>[Signature]</i> REGION FOUR ENGINEER

TYPICAL SECTION OF PROPOSED IMPROVEMENT



TYPICAL SECTION OF EXISTING ROAD



PAINT PAVEMENT MARKING LINE 4"

CENTERLINE STRIPE
Sta. 1+00 to 78+40.0 = 1,935 Foot

EDGE LINE
Rt. & Lt. Sta. 1+00 to 78+40.0 = 15,365 Foot

STRIPING QUANTITY
Sta. 1+00 to 78+40.0 = 17,300 Foot

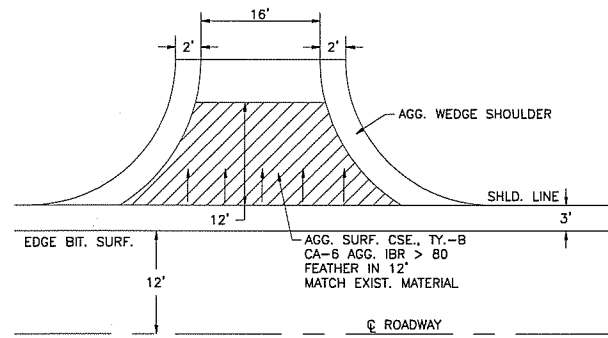
HOT-MIX ASPHALT

BINDER COURSE
MAINLINE BINDER
Sta. 1+00 to 78+40.0 = 3,180 Ton

SURFACE COURSE
MAINLINE SURFACE
Sta. 1+00 to 78+40.0 = 1,735 Ton

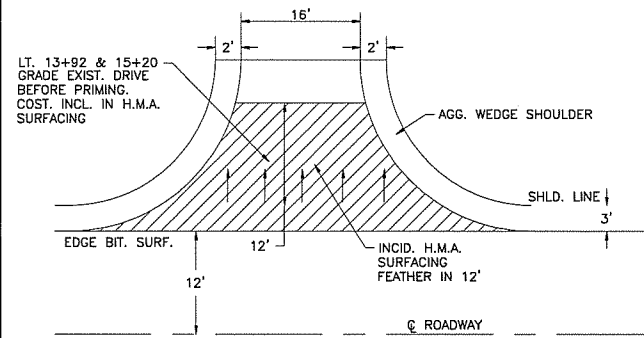
BITUMINOUS MATERIALS (TACK COAT)
AFTER H.M.A. REMOVAL = 9,300 POUNDS
AFTER H.M.A. BINDER 1 = 4,650 POUNDS
AFTER H.M.A. BINDER 2 = 4,650 POUNDS
TOTAL 18,600 POUNDS

DETAIL OF FIELD ENTRANCES



AGGREGATE SURFACE COURSE, TYPE B
LT. STA. 26+40 = 6 TON
LT. STA. 34+70 = 10 TON
LT. STA. 42+25 = 6 TON
LT. STA. 64+90 = 6 TON
TOTAL 28 TON

DETAIL OF PRIVATE ENTRANCES



AGGREGATE SURFACE COURSE, TYPE B
RT. STA. 5+45 = 2 TON
LT. STA. 13+92 = 2 TON
LT. STA. 15+20 = 2 TON
TOTAL 6 TON

BITUMINOUS MATERIALS (PRIME COAT)
RT. STA. 5+45 = 65 POUNDS
LT. STA. 13+92 = 65 POUNDS
LT. STA. 15+20 = 65 POUNDS
TOTAL 195 POUNDS

INCIDENTAL HOT-MIX ASPHALT SURFACING
RT. STA. 5+45 = 4 TON
LT. STA. 13+92 = 4 TON
LT. STA. 15+20 = 4 TON
TOTAL 12 TON

Δ SPECIFIC ITEMS

TOTAL PROJECT SUMMARY OF QUANTITIES

QUANTITY	UNIT	ITEM	CODE NUMBER
1	L SUM	TRAFFIC CONTROL AND PROTECTION, (SPECIAL)	X7010216
34	TON	AGGREGATE SURFACE COURSE, TYPE B	40200800
295	POUND	BITUMINOUS MATERIALS (PRIME COAT)	40600275
18,710	POUND	BITUMINOUS MATERIALS (TACK COAT)	40600290
320	SQ YD	HOT-MIX ASPHALT SURFACE REMOVAL - BUTT JOINT	40600982
265	SQ YD	TEMPORARY RAMP	40600990
3,180	TON	HOT-MIX ASPHALT BINDER COURSE, IL-9.5, N50	40602978
1,735	TON	HOT-MIX ASPHALT SURFACE COURSE, MIX "C", N70	40603315
54	TON	INCIDENTAL HOT-MIX ASPHALT SURFACING	40800050
20,640	SQ YD	HOT-MIX ASPHALT SURFACE REMOVAL, 1"	44000153
20,640	SQ YD	AREA REFLECTIVE CRACK CONTROL TREATMENT	44300100
650	TON	AGGREGATE WEDGE SHOULDER, TYPE B	48102100
1	L SUM	MOBILIZATION	67100100
1	L SUM	TRAFFIC CONTROL AND PROTECTION, STANDARD 701201	70100450
1	L SUM	TRAFFIC CONTROL AND PROTECTION, STANDARD 701306	70100460
3,870	FOOT	SHORT TERM PAVEMENT MARKING	70300100
260	SQ FT	SHORT TERM PAVEMENT MARKING REMOVAL	70300150
8	SQ FT	SIGN PANEL - TYPE 1	72000100 Δ
34	FOOT	TELESCOPING STEEL SIGN SUPPORT	72800100 Δ
17,300	FOOT	PAINT PAVEMENT MARKING - LINE 4"	78001110 Δ

ROUTE	SECTION	COUNTY	TOTAL SHEETS	SHEET NO.
F.A.S. 709	14-00095-00-RS	EFFINGHAM	2	2
CONTRACT NO. 95837		ILLINOIS	PROJECT W3WA(844)	

HOT MIX ASPHALT

H.M.A. UNIT WEIGHT - 112 LB/SQ. YD./INCH THICKNESS

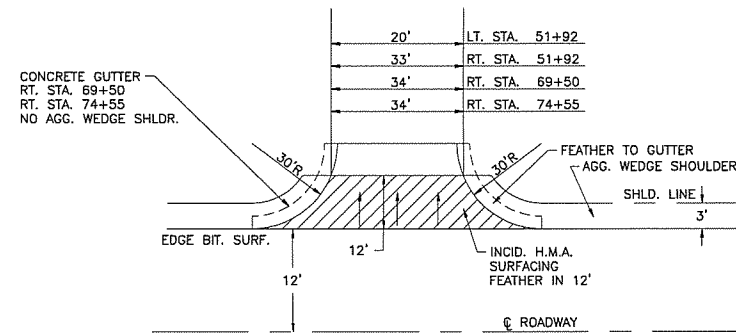
HOT-MIX ASPHALT SURFACE COURSE, MIXTURE "C" N70
PG GRADE: PG 64-22
DESIGN AIR VOIDS: 4.0% @ Ndesign 70
MIXTURE COMPOSITION: IL-9.5
FRICTION AGGREGATE: MIXTURE C

HOT-MIX ASPHALT BINDER COURSE, IL 9.5, N50
PG GRADE: PG 64-22
DESIGN AIR VOIDS: 4.0% @ Ndesign 50
MIXTURE COMPOSITION: IL-9.5
FRICTION AGGREGATE: N/A

SIGN DETAILS

LOCATION	SIGN	SIGN PANEL, TY. 1	TELE. STL. SIGN SUP.
RT. STA. 1+00	R5-1102 (CLASS II)	4.0 SQ. FT.	17 FT.
LT. STA. 78+40	R5-1102 (CLASS II)	4.0 SQ. FT.	17 FT.
TOTALS		8.0 SQ. FT.	34 FT.

DETAIL OF INTERSECTIONS

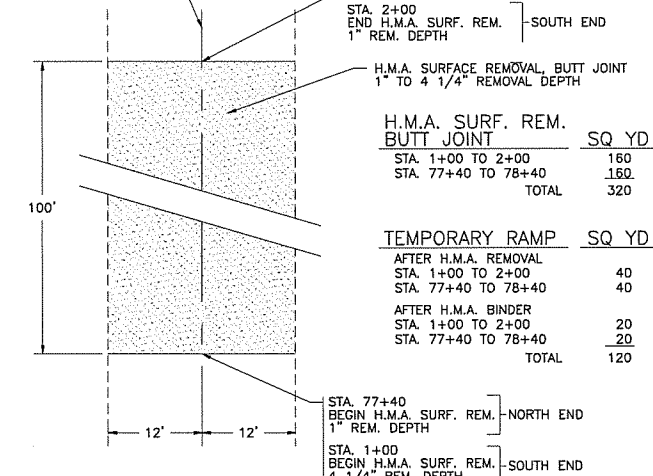


INCIDENTAL HOT-MIX ASPHALT SURFACING
LT. STA. 51+92 = 6 TON
RT. STA. 51+92 = 8 TON
RT. STA. 69+50 = 8 TON
RT. STA. 74+55 = 8 TON
TOTAL 30 TON

BITUMINOUS MATERIALS (TACK COAT)
LT. STA. 51+92 = 20 POUNDS
RT. STA. 51+92 = 30 POUNDS
RT. STA. 69+50 = 30 POUNDS
RT. STA. 74+55 = 30 POUNDS
TOTAL 110 POUNDS

TEMPORARY RAMP
LT. STA. 51+92 = 25 SQ YD
RT. STA. 51+92 = 40 SQ YD
RT. STA. 69+50 = 40 SQ YD
RT. STA. 74+55 = 40 SQ YD
TOTAL 145 SQ YD

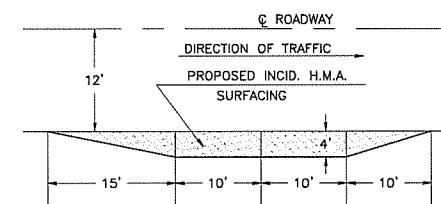
SECTION 14-00095-00-RS



H.M.A. SURF. REM. BUTT JOINT
STA. 1+00 TO 2+00 160
STA. 77+40 TO 78+40 160
TOTAL 320

TEMPORARY RAMP
AFTER H.M.A. REMOVAL
STA. 1+00 TO 2+00 40
STA. 77+40 TO 78+40 40
AFTER H.M.A. BINDER
STA. 1+00 TO 2+00 20
STA. 77+40 TO 78+40 20
TOTAL 120

H.M.A. SURFACE REMOVAL - BUTT JOINT DETAIL



BITUMINOUS MATERIALS (PRIME COAT)
LT. STA. 5+56 = 33 POUNDS
LT. STA. 14+09 = 33 POUNDS
LT. STA. 15+32 = 34 POUNDS
TOTAL 100 POUNDS

INCIDENTAL HOT-MIX ASPHALT SURFACING
LT. STA. 5+56 = 4 TON
LT. STA. 14+09 = 4 TON
LT. STA. 15+32 = 4 TON
TOTAL 12 TON

MAILBOX TURNOUT DETAIL