

09A

# CONSTRUCTION PLANS FOR CASEY MUNICIPAL AIRPORT CASEY, CLARK COUNTY, ILLINOIS

## REHABILITATE WEST APRON AND T-HANGAR PAVEMENT

CS006

FILENAME: 1H84409-sh1-cover.dgn

PLOT DATE: 4/26/2018

SCALE: 1:0000 / 1" = 100'

USER: jolson

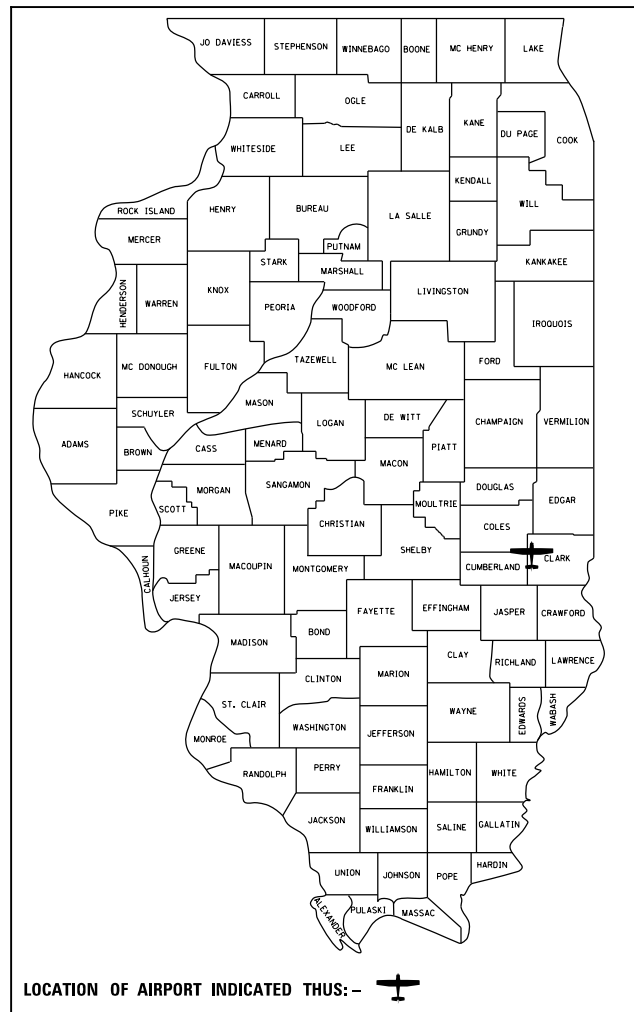
DRAWN	-	-
CHECKED	-	-
APPROVED	-	-

REVISIONS		
NO.	BY	DATE



**Hutchison Engineering, Inc.**  
SINCE 1945  
1801 West Lafayette  
PO Box 820  
Jacksonville, Illinois 62651  
PHONE : (217)245-7164 FAX (217)243-0468

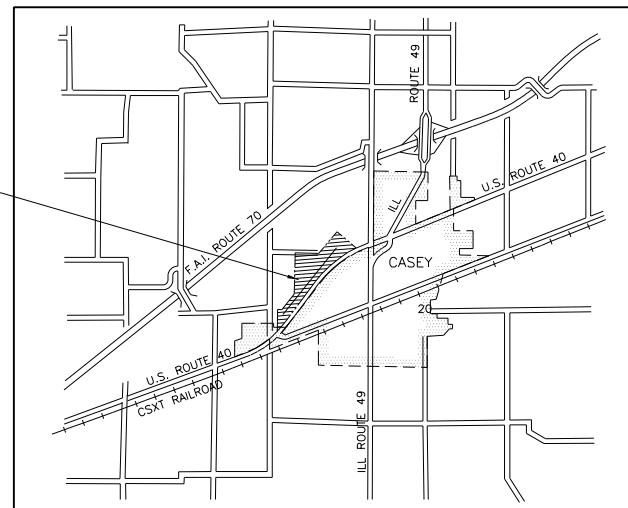
LOCATION MAP



ILLINOIS PROJECT NO. 1H8-4409  
SBG PROJECT NO. 3-17-SBGP-95/99/105/111

MARCH 1, 2018

CASEY MUNICIPAL AIRPORT



VICINITY MAP

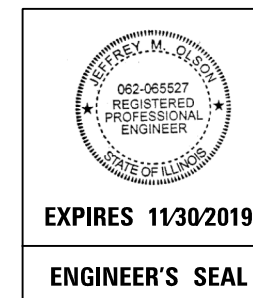


CITY OF CASEY, ILLINOIS

APPROVED Mark H. Grooten MAYOR  
DATE 4-25-18  
APPROVED Jeremy Mumford CITY CLERK  
DATE 4/25/18

Hutchison Engineering, Inc.

SUBMITTED BY Jeffrey M. Jolson ENGINEER  
DATE SUBMITTED 4-25-18  
LICS. EXP. DATE 11-30-19



CASEY MUNICIPAL AIRPORT  
CASEY, ILLINOIS  
REHABILITATE WEST APRON  
AND T-HANGAR PAVEMENT

COVER SHEET

HEI PROJ. NO. 4109  
ILL PROJ. NO. 1H8-4409  
SBG PROJ. NO.  
3-17-SBGP-95/99/105/111

FINAL

1

SHEET 1 OF 15

**CS006**

FILENAME: IH84409-sh1-gen.dgn  
 PLOT DATE: 4/23/2018  
 SCALE: 1.0000' / In.  
 USER: jolson

DRAWN	-	-
CHECKED	-	-
APPROVED	-	-

REVISIONS		
NO.	BY	DATE



**Hutchison Engineering, Inc.**  
 SINCE 1945  
 1801 West Lafayette  
 PO Box 820  
 Jacksonville, Illinois 62651  
 PHONE : (217)245-7164 FAX (217)243-0468

GENERAL NOTES

1. THE AS BID QUANTITIES FOR CRACK SEALING HAVE BEEN ESTIMATED BY MEASURING CRACK SEALING IN SELECTED REPRESENTATIVE LOCATIONS ON THE PAVEMENT. THESE QUANTITIES MAY BE INCREASED OR REDUCED AT THE TIME OF CONSTRUCTION BASED UPON THE CRACK WORK THAT IS MARKED OUT BY THE RESIDENT ENGINEER AFTER FIELD INSPECTION OF THE PAVEMENT CRACKS.
2. ANY SOD WHICH HAS ENCROACHED UPON THE PAVEMENT EDGE SHALL BE REMOVED PRIOR TO THE PROPOSED BITUMINOUS SURFACE COURSE APPLICATION. THE ENTIRE PAVEMENT SURFACE SHALL BE SWEEPED TO REMOVE ALL LOOSE MATERIALS BEFORE THE APPLICATION OF BITUMINOUS TACK COAT. THE COST OF THIS WORK SHALL BE INCLUDED IN THE PRICE BID FOR BITUMINOUS TACK COAT.
3. A BITUMINOUS TACK COAT SHALL BE APPLIED TO THE EXISTING PAVEMENT PRIOR TO PLACING THE BITUMINOUS SURFACE COURSE. THE APPLICATION RATE SHOWN ON THE TYPICAL SECTION WAS USED TO CALCULATE THE PLAN QUANTITY. THE EXACT AMOUNT OF BITUMINOUS TACK COAT TO BE USED SHALL BE DETERMINED BY THE PROJECT ENGINEER AT THE TIME OF CONSTRUCTION.
4. THE BITUMINOUS SURFACE COURSE SHALL BE ABUTTED TO THE EXISTING PAVEMENT AT INTERSECTING PAVEMENTS AS SHOWN ON THE BITUMINOUS BUTT JOINT DETAIL. THE EXISTING PAVEMENT CONFINED WITHIN THE BITUMINOUS PAVEMENT MILLING AREA WILL BE REMOVED IN ACCORDANCE WITH THE DETAIL AT THE BUTT JOINT LOCATION. FILLING OF THE MILLED AREA WILL BE MADE USING BITUMINOUS SURFACE COURSE MIX AND WILL BE PAID FOR PER TON FOR BITUMINOUS SURFACE COURSE - METHOD I, SUPERPAVE.
5. THE SHOULDERS SHALL BE ADJUSTED AS SHOWN IN THE TYPICAL SECTION USING SOIL OBTAINED OFF SITE THAT IS FREE OF HEAVY SOD, DECAYED VEGETATIVE MATTER, RUBBISH, AGGREGATE AND OTHER UNSUITABLE MATERIAL. THE SHOULDER ADJUSTMENT AREAS SHALL BE FERTILIZED AND SEEDED AND THE COST OF THIS WORK SHALL BE INCLUDED IN THE PRICE BID FOR SHOULDER ADJUSTMENT.
6. ALL AREAS DISTURBED BY THE CONTRACTOR INCLUDING THE CONTRACTOR'S PARKING AREA, HAUL ROADS, ETC. SHALL BE REGRADED AND RESEEDED AND/OR RESTORED TO THEIR ORIGINAL CONDITION. THIS RESTORATION SHALL BE ACCOMPLISHED BY THE CONTRACTOR AT HIS OWN EXPENSE UPON COMPLETION OF THIS IMPROVEMENT PROJECT.

INDEX OF SHEETS	
NO.	DESCRIPTION
1	COVER SHEET
2	INDEX OF SHEETS, GENERAL NOTES, SUMMARY OF QUANTITIES
3	PAVING SCHEDULE
4	CONSTRUCTION SAFETY & PHASING PLAN
5	APRON TYPICAL SECTION
6-9	TAXILANE TYPICAL SECTIONS
10-12	PAVEMENT LAYOUT AND ELEVATIONS
13	TIE DOWN AND PAVEMENT MARKING LAYOUT
14	SPECIAL DETAILS
15	STANDARD DETAILS

SUMMARY OF QUANTITIES				
ITEM NO.	DESCRIPTION	UNIT	AS BID QUANTITY	AS BUILT QUANTITY
AR150530	TRAFFIC MAINTENANCE	L. SUM	1	
AR152410	UNCLASSIFIED EXCAVATION	CU. YD.	26	
AR152480	SHOULDER ADJUSTMENT	SQ. YD.	3,720	
AR209510	CRUSHED AGGREGATE BASE COURSE	TON	157	
AR209655	AGGREGATE BASE REMOVAL	SQ. YD.	394	
AR401613	BIT. SURF. CSE.-METHOD I, SUPERPAVE	TON	1,294	
AR401650	BITUMINOUS PAVEMENT MILLING	SQ. YD.	2,213	
AR401655	BUTT JOINT CONSTRUCTION	SQ. YD.	1,628	
AR401661	BITUMINOUS CRACK SEALING	LIN. FT.	3,410	
AR401910	REMOVE & REPLACE BIT. PAVEMENT	SQ. YD.	61	
AR510511	TIE DOWN - TYPE A	EACH	17	
AR602510	BITUMINOUS PRIME COAT	GAL.	138	
AR603510	BITUMINOUS TACK COAT	GAL.	1,025	
AR620520	PAVEMENT MARKING - WATERBORNE	SQ. FT.	533	
AR701512	12" RCP, CLASS IV	LIN. FT.	144	
AR751411	INLET - TYPE A	EACH	1	
AR751614	MANHOLE (TYPE A-4)	EACH	2	

**CASEY MUNICIPAL AIRPORT  
 CASEY, ILLINOIS  
 REHABILITATE WEST APRON  
 AND T-HANGAR PAVEMENT**

**INDEX OF SHEETS, GENERAL NOTES,  
 AND SUMMARY OF QUANTITIES**

HEI PROJ. NO. 4109  
 ILL PROJ. NO. IH8-4409  
 SBC PROJ. NO.  
 3-17-SBCP-95/99/105/111

**FINAL**

**2**

**SHEET 2 OF 15**

PAVING SCHEDULE									
LOCATION	AR152410	AR209510	AR209655	AR401613	AR401650	AR401655	AR401910	AR602510	AR603510
	UNCLASSIFIED EXCAVATION	CRUSHED AGG. BASE CSE.	AGG. BASE REMOVAL	BIT. SURF. CSE. - METHOD 1, SP	BIT. PAVEMENT MILING	BUTT JOINT CONSTRUCTION	REM. & REPLACE BIT. PAV.	BIT. PRIME COAT	BIT. TACK COAT
	CU. YD.	TON	SQ. YD.	TON	SQ. YD.	SQ. YD.	SQ. YD.	GALLON	GALLON
<b>PAVEMENT SECTIONS</b>									
APRON									
STA 1+92.44 TO STA 3+96.07				692.0		912.4			578.7
TAXILANE 1									
STA 302+04.93 TO STA 304+25.00				72.5	257.2		61.0		58.1
STA 304+25.00 TO STA 304+50.00				8.0	23.8				7.2
STA 304+50.00 TO STA 307+75.00				124.9					94.1
STA 307+75.00 TO STA 308+00.00				8.1	27.8				7.3
STA 308+00.00 TO STA 309+14.22				29.2	253.8				25.4
TAXILANE 2									
STA 402+05.25 TO STA 404+34.82				64.3	559.0				55.9
TAXILANE 3									
STA 502+11.57 TO STA 504+34.19				61.1	530.9				53.1
TAXILANE 4									
STA 602+88.00 TO STA 603+67.00	26.0	156.8	393.6	90.5	393.6			137.8	11.8
STA 603+67.00 TO STA 604+33.79				28.7	166.5				21.6
SUBTOTAL	26.0	156.8	393.6	1,179.3	2,212.6	912.4	61.0	137.8	913.2
<b>ENTRANCES</b>									
TAXILANE 1									
STA 302+75.00, LT				9.8		40.0			10.6
STA 302+75.00, RT				3.2		27.9			2.8
STA 303+00.00, LT				3.8		15.3			4.1
STA 303+35.97, RT				3.2		27.7			2.8
STA 303+57.32, LT				8.3		36.6			8.9
STA 303+95.70, RT				3.2		27.5			2.8
STA 304+03.93, LT				3.6		15.2			3.8
STA 304+94.91, LT				8.6		28.0			9.6
STA 305+54.34, LT				3.5		16.2			3.8
STA 306+10.62, LT				2.9		13.1			3.1
STA 306+66.70, LT				3.0		13.2			3.1
STA 307+45.53, LT				14.1		47.3			15.6
STA 307+91.59, LT				4.0		37.1			3.7
STA 308+36.97, RT				3.2		27.5			2.8
STA 308+92.38, RT				3.2		27.7			2.8
TAXILANE 2									
STA 402+46.21, LT				4.3		37.3			3.7
STA 402+46.26, RT				4.3		37.4			3.7
STA 403+02.30, RT				4.3		37.4			3.7
STA 403+06.01, LT				4.3		37.6			3.8
STA 403+59.11, RT				4.3		37.4			3.7
STA 403+66.04, LT				4.3		37.8			3.8
TAXILANE 3									
STA 502+75.00, LT				3.5		30.1			3.0
STA 503+31.33, LT				3.5		30.1			3.0
STA 503+87.47, LT				3.5		30.2			3.0
SUBTOTAL				113.9		715.6			111.7
TOTAL	26.0	156.8	393.6	1,293.2	2,212.6	1,628.0	61.0	137.8	1,024.9
USE	26	157	394	1,294	2,213	1,628	61	138	1,025

DRAWN	-	-
CHECKED	-	-
APPROVED	-	-
REVISIONS		
NO.	BY	DATE



**Hutchison Engineering, Inc.**  
 SINCE 1945  
 1801 West Lafayette  
 PO Box 820  
 Jacksonville, Illinois 62651  
 PHONE : (217)245-7164 FAX (217)243-0468

**CASEY MUNICIPAL AIRPORT  
 CASEY, ILLINOIS  
 REHABILITATE WEST APRON  
 AND T-HANGAR PAVEMENT**

**PAVING SCHEDULE**

HEI PROJ. NO. 4109  
 ILL PROJ. NO. IH8-4409  
 SBC PROJ. NO.  
 3-17-SBCP-95/99/105/111

**FINAL**

**3**

CONSTRUCTION PROCEDURE NOTES

CS006

FILENAME: 1H84409-sh1-cspp.dgn  
 PLOT DATE: 4/23/2018  
 SCALE: 600,0000' / in.  
 USER: jolson

DRAWN	-	-
CHECKED	-	-
APPROVED	-	-

REVISIONS		
NO.	BY	DATE



**Hutchison Engineering, Inc.**  
 SINCE 1945  
 1801 West Lafayette  
 PO Box 820  
 Jacksonville, Illinois 62651  
 PHONE : (217)245-7164 FAX (217)243-0468

**CASEY MUNICIPAL AIRPORT  
 CASEY, ILLINOIS  
 REHABILITATE WEST APRON  
 AND T-HANGAR PAVEMENT  
 CONSTRUCTION SAFETY &  
 PHASING PLAN**

HEI PROJ. NO. 4109  
 ILL PROJ. NO. 1H8-4409  
 SBC PROJ. NO.  
 3-17-SBCP-95/99/105/111

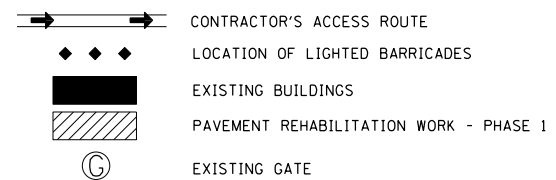
**FINAL**

**4**

**SHEET 4 OF 15**

- ALL CONTRACTOR EMPLOYEES WILL PARK THEIR PERSONAL VEHICLES IN THE AREA DESIGNATED IN THESE PLANS FOR USE AS A VEHICLE PARKING AREA. ONLY AUTHORIZED CONTRACTOR VEHICLES WILL BE ALLOWED ON THE AIR OPERATIONS AREA OF THE AIRPORT AND ON THE CONSTRUCTION SITE.
- FLAGS WILL BE REQUIRED ON ALL CONTRACTOR'S VEHICLES AND EQUIPMENT. THE FLAGS SHALL BE THREE (3) FOOT SQUARE CHECKERED FLAGS (INTERNATIONAL ORANGE AND WHITE) DISPLAYED IN FULL VIEW ABOVE THE VEHICLE.
- THE CONTRACTOR WILL USE THE DESIGNATED ACCESS ROUTE AND EQUIPMENT STORAGE AREA SHOWN ON THIS SHEET. IT WILL BE THE CONTRACTOR'S RESPONSIBILITY TO MAINTAIN THE DESIGNATED ACCESS ROUTE AND EQUIPMENT STORAGE AREA FOR THE DURATION OF THE PROJECT. ANY DAMAGE TO EXISTING PAVEMENTS USED FOR ACCESS TO THE CONSTRUCTION SITE WILL BE REPAIRED BY THE CONTRACTOR AT HIS OWN EXPENSE TO THE SATISFACTION OF THE AIRPORT MANAGER AND RESIDENT ENGINEER.
- LIGHTED BARRICADES WILL BE EQUIPPED WITH RED FLASHING LIGHTS.
- THE CONTRACTOR SHALL FURNISH, MAINTAIN, AND REMOVE ALL BARRICADES REQUIRED TO DELINEATE THE WORK AREA AND KEEP AIRCRAFT OR GROUND VEHICLES FROM ENCROACHING INTO SAID WORK AREA. THIS REQUIREMENT SHALL BE CONSIDERED INCIDENTAL TO TRAFFIC MAINTENANCE AND NO ADDITIONAL COMPENSATION WILL BE ALLOWED.
- CONSTRUCTION ACTIVITY CONTROL AND OPERATION AREA PROTECTION SHALL BE ACCOMPLISHED IN ACCORDANCE WITH FAA ADVISORY CIRCULAR NO. 150/5370-2 (LATEST REVISION).
- THE MAXIMUM CONSTRUCTION EQUIPMENT HEIGHT UTILIZED ON THE AIRPORT FOR THIS PROJECT SHALL BE 25'.
- THIS PROJECT CONSISTS OF WORK TO REHABILITATE THE WESTERN PORTION OF THE MAIN APRON AND T-HANGAR ACCESS PAVEMENTS.
- THIS PROJECT WILL NOT DISTURB MORE THAN 1 ACRE OF TURFED LAND.
- THE EXISTING RUNWAY DESIGN CODE IS B-II FOR RUNWAY 4-22.
- PHASE 1 OF 1 - THE WESTERN PORTION OF THE MAIN APRON, AND ALL T-HANGAR ACCESS PAVEMENTS SHALL BE CLOSED TO AIRCRAFT TRAFFIC WHILE WORK IS ACCOMPLISHED IN THESE AREAS. PLACE BARRICADES 40' EAST OF THE LIMITS OF WORK ON THE APRON.
- THE CONTRACTOR SHALL GIVE THE AIRPORT MANAGEMENT THREE DAYS NOTICE PRIOR TO STARTING ANY CONSTRUCTION WHICH WOULD NECESSITATE CLOSURE OF THE AIRFIELD PAVEMENTS. AIRPORT MANAGEMENT SHALL GIVE PROPER NOTICE (NOTAMS) TO THE NEAREST FAA FLIGHT SERVICE STATION PRIOR TO THE START OF CONSTRUCTION AND CLOSURE OF AIRFIELD PAVEMENTS.
- NO WORK SHALL BE PERFORMED WITHIN 66' OF AN ACTIVE TAXIWAY CENTERLINE, OR WITHIN 58' OF AN ACTIVE TAXILANE/ APRON TAXILANE.
- AIRCRAFT WILL BE ALLOWED ON THE EASTERN PORTION OF THE MAIN APRON DURING PHASE 1.

LEGEND



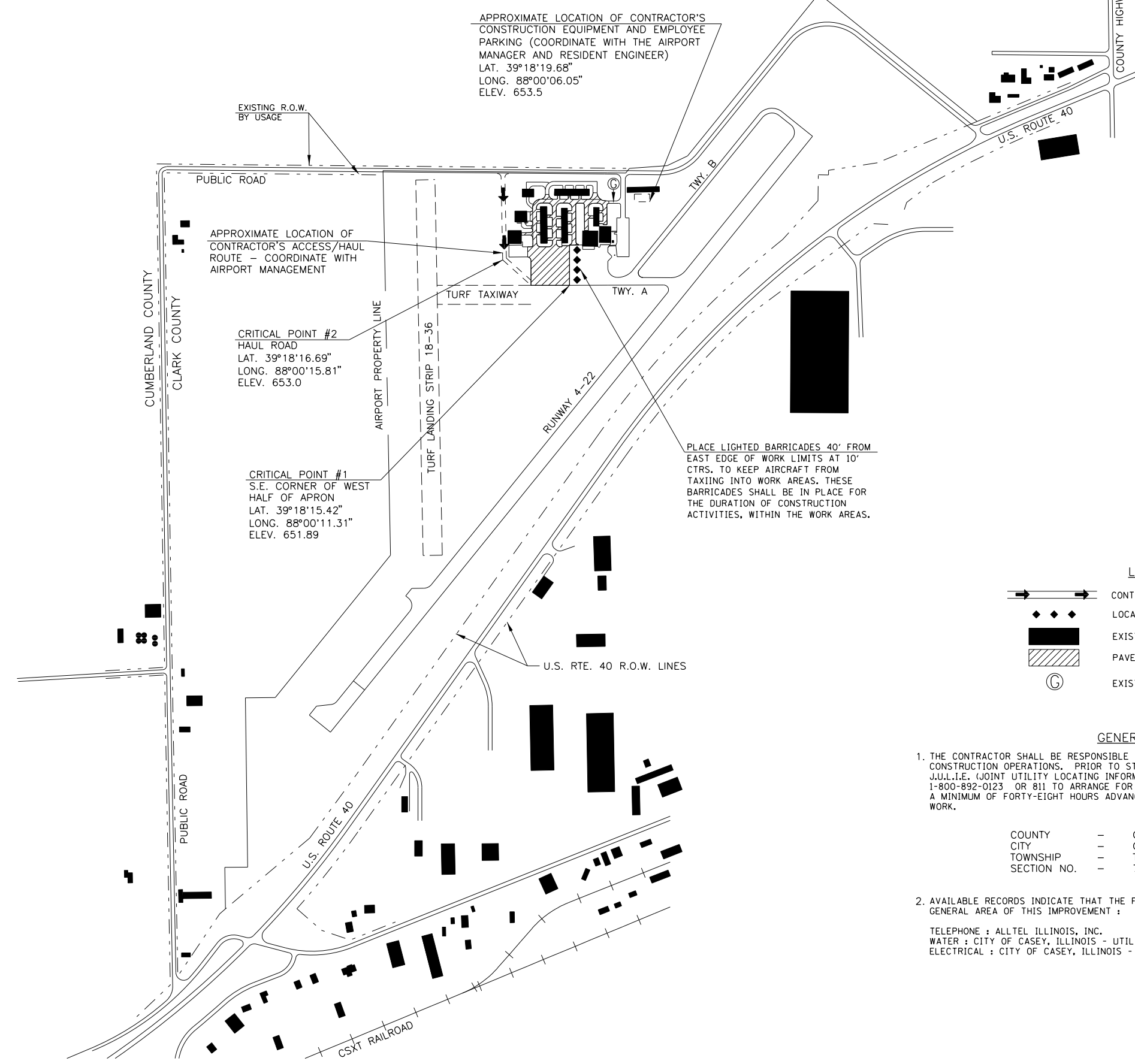
GENERAL NOTES

1. THE CONTRACTOR SHALL BE RESPONSIBLE FOR PROTECTING UTILITY PROPERTY FROM CONSTRUCTION OPERATIONS. PRIOR TO STARTING WORK, THE CONTRACTOR SHALL CONTACT J.U.L.I.E. (JOINT UTILITY LOCATING INFORMATION FOR EXCAVATORS) PHONE 1-800-892-0123 OR 811 TO ARRANGE FOR LOCATION OF UTILITIES IN THE WORK AREA. A MINIMUM OF FORTY-EIGHT HOURS ADVANCE NOTICE IS REQUIRED FOR NON-EMERGENCY WORK.

COUNTY - CLARK  
 CITY - CASEY  
 TOWNSHIP - T. 10 N., R. 14 W. 2ND P.M. (CASEY)  
 SECTION NO. - 7 & 8

2. AVAILABLE RECORDS INDICATE THAT THE FOLLOWING UTILITIES ARE LOCATED WITHIN THE GENERAL AREA OF THIS IMPROVEMENT :

TELEPHONE : ALLTEL ILLINOIS, INC.  
 WATER : CITY OF CASEY, ILLINOIS - UTILITIES DEPARTMENT  
 ELECTRICAL : CITY OF CASEY, ILLINOIS - UTILITIES DEPARTMENT



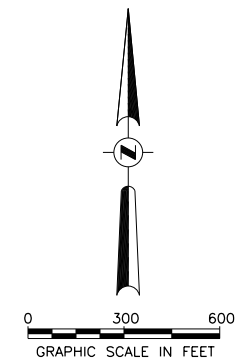
APPROXIMATE LOCATION OF CONTRACTOR'S CONSTRUCTION EQUIPMENT AND EMPLOYEE PARKING (COORDINATE WITH THE AIRPORT MANAGER AND RESIDENT ENGINEER)  
 LAT. 39°18'19.68"  
 LONG. 88°00'06.05"  
 ELEV. 653.5

APPROXIMATE LOCATION OF CONTRACTOR'S ACCESS/HAUL ROUTE - COORDINATE WITH AIRPORT MANAGEMENT

CRITICAL POINT #2  
 HAUL ROAD  
 LAT. 39°18'16.69"  
 LONG. 88°00'15.81"  
 ELEV. 653.0

CRITICAL POINT #1  
 S.E. CORNER OF WEST HALF OF APRON  
 LAT. 39°18'15.42"  
 LONG. 88°00'11.31"  
 ELEV. 651.89

PLACE LIGHTED BARRICADES 40' FROM EAST EDGE OF WORK LIMITS AT 10' CTRS. TO KEEP AIRCRAFT FROM TAXIING INTO WORK AREAS. THESE BARRICADES SHALL BE IN PLACE FOR THE DURATION OF CONSTRUCTION ACTIVITIES, WITHIN THE WORK AREAS.



CS006

FILENAME: IH84409-sh1-1yp1col.dgn  
 PLOT DATE: 4/23/2018  
 SCALE: 6,6667' / 1"  
 USER: jolson

DRAWN	-	-
CHECKED	-	-
APPROVED	-	-

REVISIONS		
NO.	BY	DATE



**Hutchison Engineering, Inc.**  
 SINCE 1945  
 1801 West Lafayette  
 PO Box 820  
 Jacksonville, Illinois 62651  
 PHONE : (217)245-7164 FAX (217)243-0468

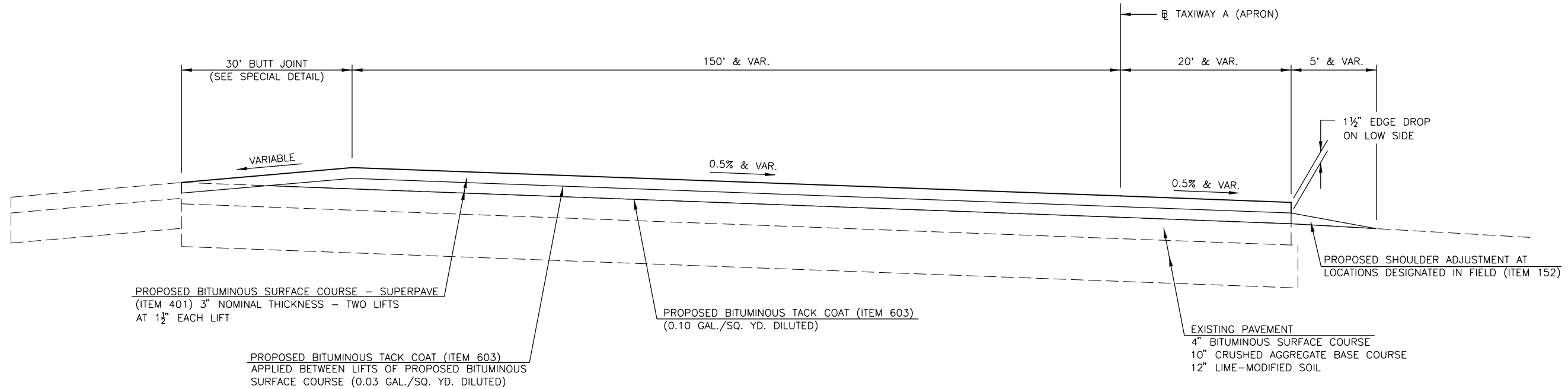
**CASEY MUNICIPAL AIRPORT  
 CASEY, ILLINOIS  
 REHABILITATE WEST APRON  
 AND T-HANGAR PAVEMENT  
 TAXIWAY A (APRON)  
 TYPICAL SECTION**

HEI PROJ. NO. 4109  
 ILL PROJ. NO. IH8-4409  
 SBC PROJ. NO.  
 3-17-SBCP-95/99/105/111

**FINAL**

**5**

SHEET 5 OF 15



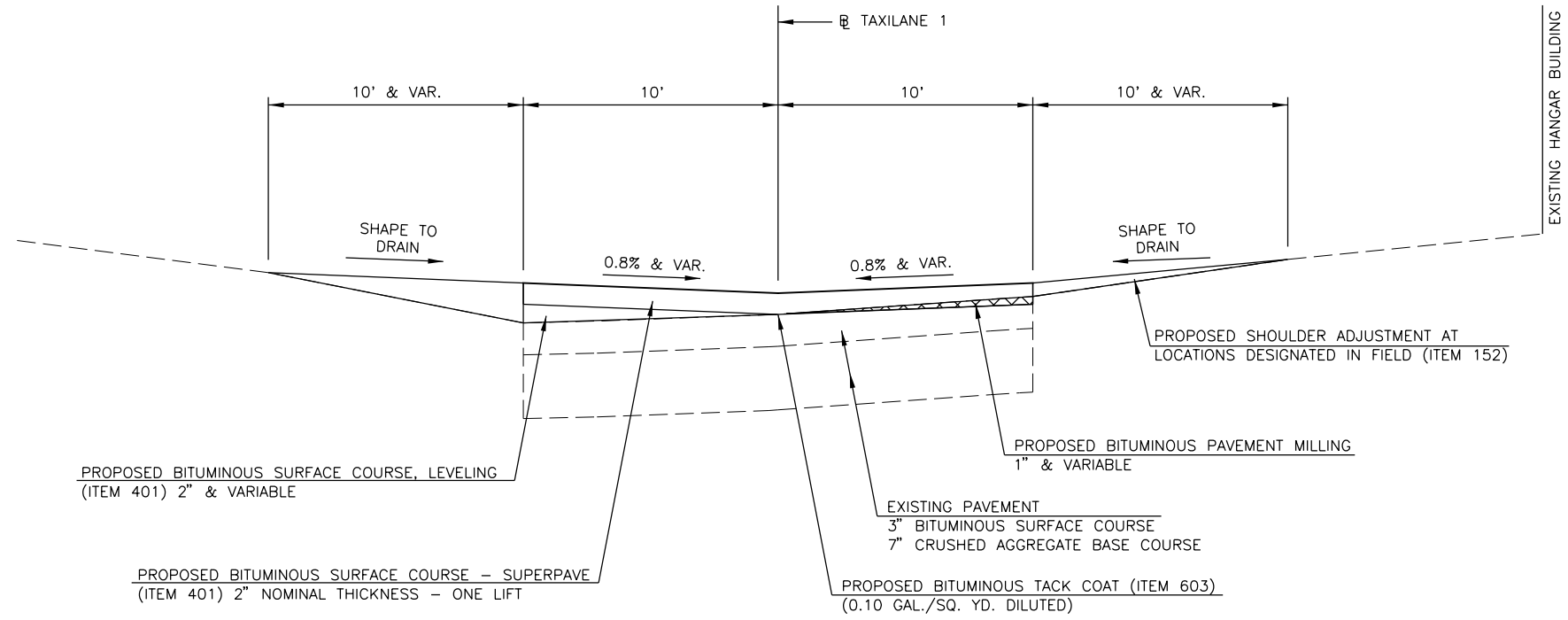
TAXIWAY A (APRON)  
 TYPICAL SECTION  
 NOT TO SCALE  
 STA 1+92.44 TO 3+96.07

DRAWN	-	-
CHECKED	-	-
APPROVED	-	-

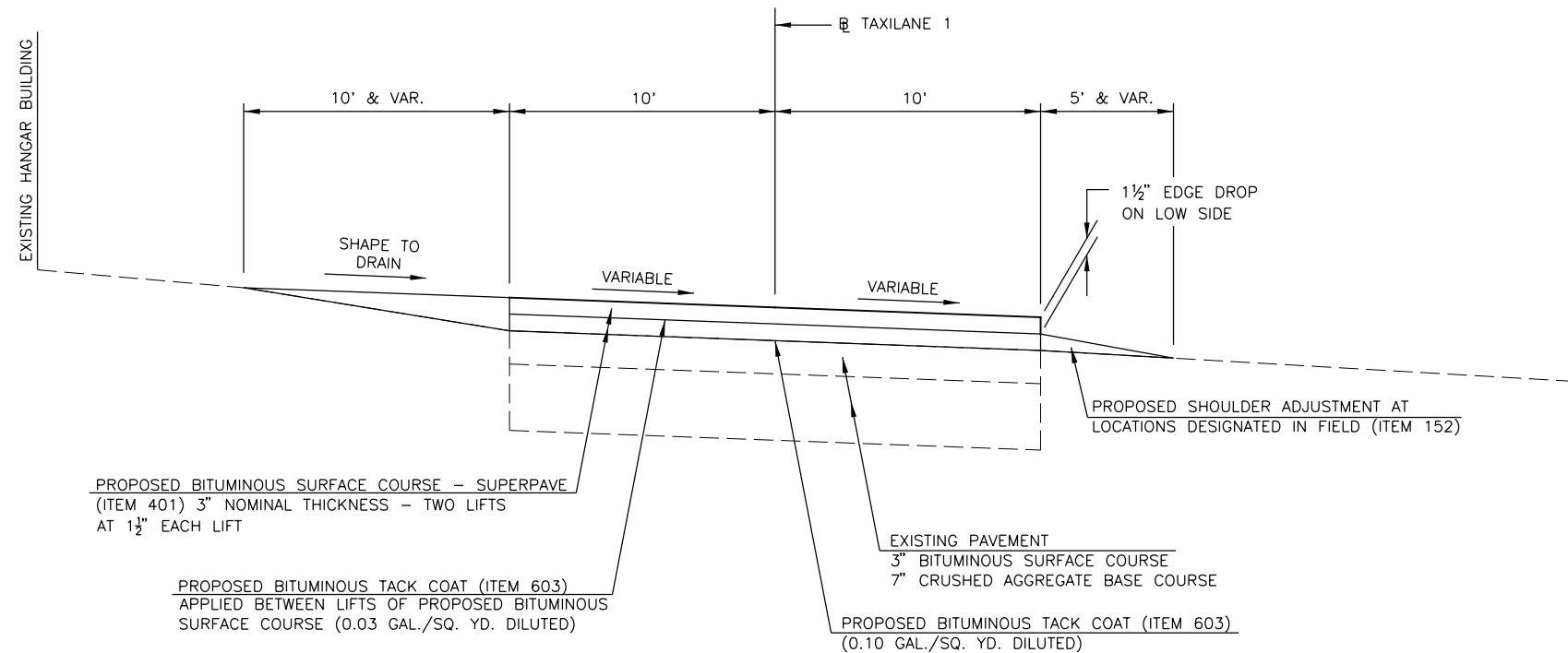
REVISIONS		
NO.	BY	DATE



**Hutchison Engineering, Inc.**  
 SINCE 1945  
 1801 West Lafayette  
 PO Box 820  
 Jacksonville, Illinois 62651  
 PHONE : (217)245-7164 FAX (217)243-0468



**TAXILANE 1**  
**TYPICAL SECTION**  
 NOT TO SCALE  
 STA 302+04.93 TO STA 304+25.00  
 TRANSITION STA 304+25.00 TO STA 304+50.00



**TAXILANE 1**  
**TYPICAL SECTION**  
 NOT TO SCALE  
 STA 304+50.00 TO 307+75.00  
 TRANSITION STA 307+75.00 TO STA 308+00.00

**CASEY MUNICIPAL AIRPORT**  
**CASEY, ILLINOIS**  
**REHABILITATE WEST APRON**  
**AND T-HANGAR PAVEMENT**

**TAXILANE #1**  
**TYPICAL SECTIONS**

HEI PROJ. NO. 4109  
 ILL PROJ. NO. IH8-4409  
 SBC PROJ. NO.  
 3-17-SBCP-95/99/105/111

**FINAL**

**6**

CS006

FILENAME: IH84409-sh1-1typ1col3.dgn  
 PLOT DATE: 4/23/2018  
 SCALE: 6,6667' / 1"  
 USER: jolson

DRAWN	-	-
CHECKED	-	-
APPROVED	-	-

REVISIONS		
NO.	BY	DATE



**Hutchison Engineering, Inc.**  
 SINCE 1945  
 1801 West Lafayette  
 PO Box 820  
 Jacksonville, Illinois 62651  
 PHONE : (217)245-7164 FAX (217)243-0468

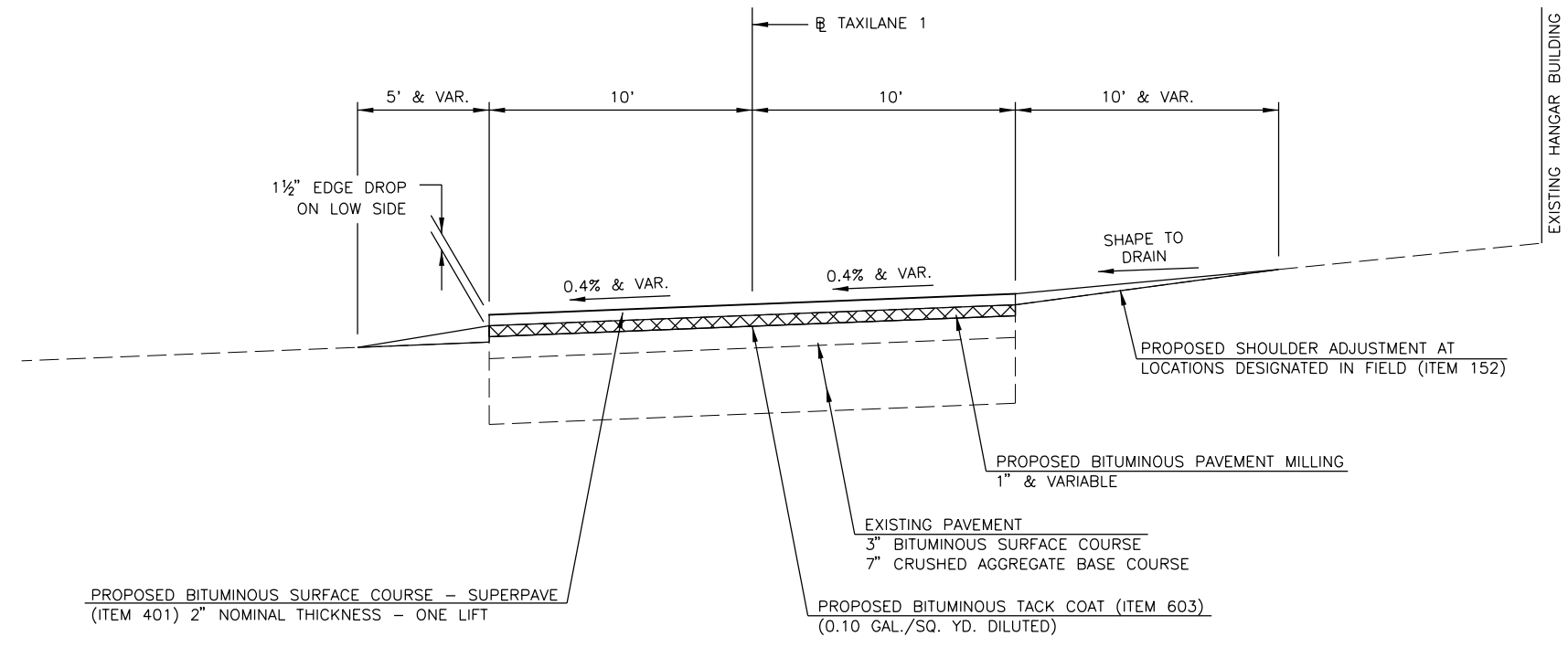
CASEY MUNICIPAL AIRPORT  
 CASEY, ILLINOIS  
 REHABILITATE WEST APRON  
 AND T-HANGAR PAVEMENT  
**TAXILANE #1  
 TYPICAL SECTIONS**

HEI PROJ. NO. 4109  
 ILL PROJ. NO. IH8-4409  
 SBC PROJ. NO.  
 3-17-SBCP-95/99/105/111

**FINAL**

**7**

SHEET 7 OF 15



PROPOSED BITUMINOUS SURFACE COURSE - SUPERPAVE  
 (ITEM 401) 2" NOMINAL THICKNESS - ONE LIFT

PROPOSED BITUMINOUS PAVEMENT MILLING  
 1" & VARIABLE

EXISTING PAVEMENT  
 3" BITUMINOUS SURFACE COURSE  
 7" CRUSHED AGGREGATE BASE COURSE

PROPOSED BITUMINOUS TACK COAT (ITEM 603)  
 (0.10 GAL./SQ. YD. DILUTED)

**TAXILANE 1  
 TYPICAL SECTION**

NOT TO SCALE  
 STA 308+00.00 TO STA 309+14.22

DRAWN	-	-
CHECKED	-	-
APPROVED	-	-

REVISIONS		
NO.	BY	DATE



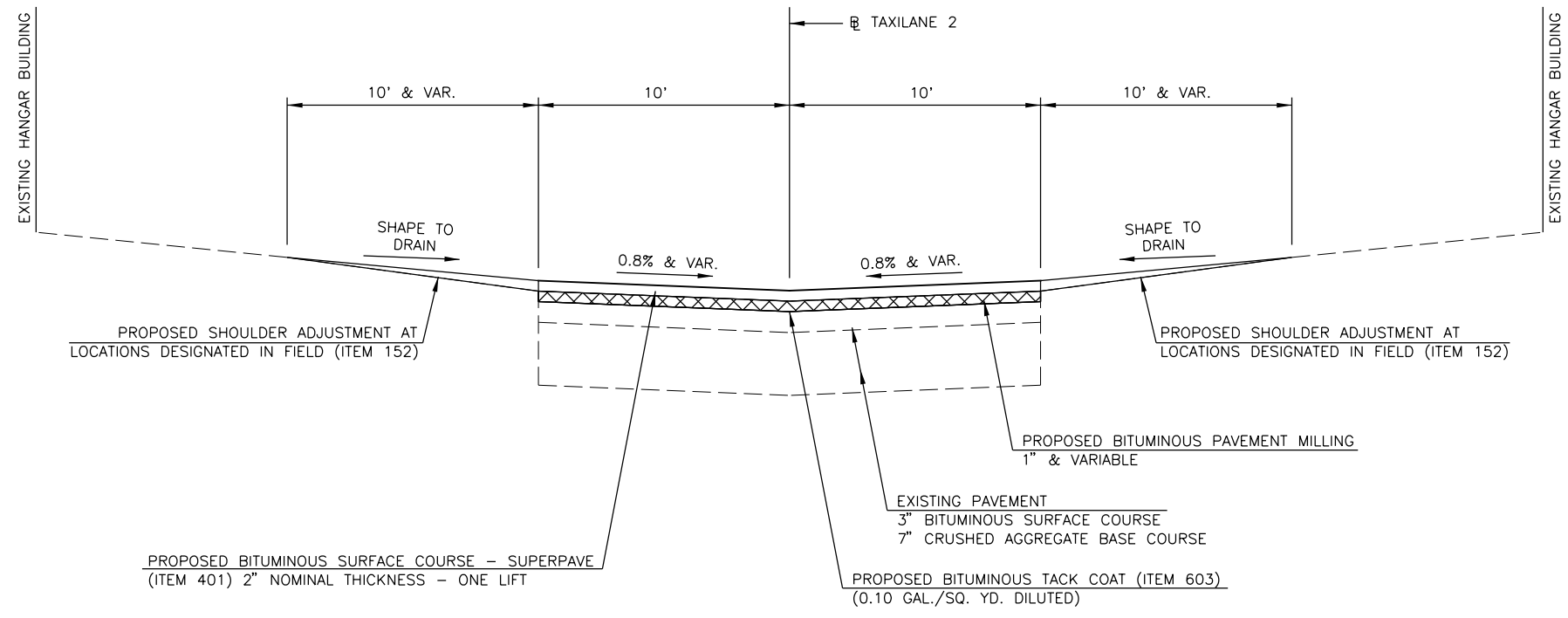
**Hutchison Engineering, Inc.**  
 SINCE 1945  
 1801 West Lafayette  
 PO Box 820  
 Jacksonville, Illinois 62651  
 PHONE : (217)245-7164 FAX (217)243-0468

**CASEY MUNICIPAL AIRPORT  
 CASEY, ILLINOIS  
 REHABILITATE WEST APRON  
 AND T-HANGAR PAVEMENT  
 TAXILANE #2 & #3  
 TYPICAL SECTIONS**

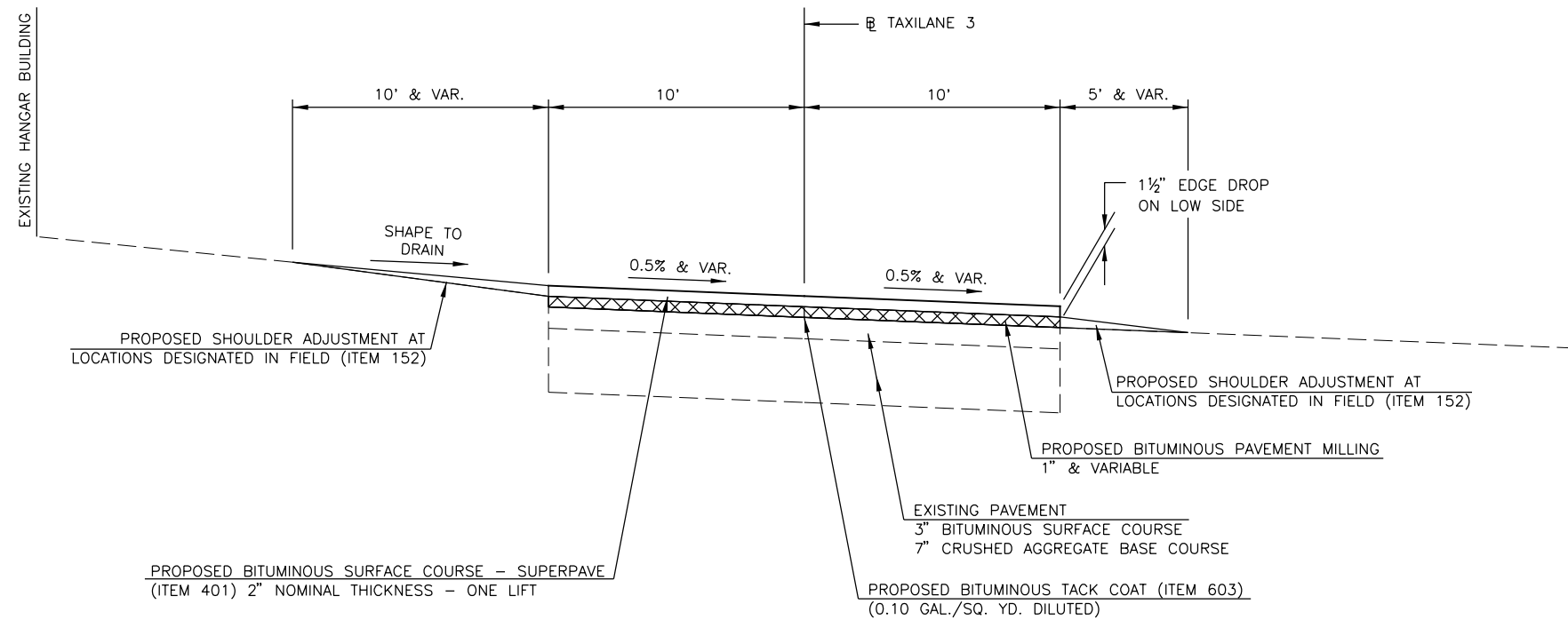
HEI PROJ. NO. 4109  
 ILL PROJ. NO. 1H8-4409  
 SBC PROJ. NO.  
 3-17-SBCP-95/99/105/111

**FINAL**

**8**



**TAXILANE 2  
 TYPICAL SECTION**  
 NOT TO SCALE  
 STA 402+05.25 TO STA 404+34.82



**TAXILANE 3  
 TYPICAL SECTION**  
 NOT TO SCALE  
 STA 502+11.57 TO STA 504+34.19



DRAWN	-	-
CHECKED	-	-
APPROVED	-	-

REVISIONS		
NO.	BY	DATE



**Hutchison Engineering, Inc.**  
 SINCE 1945  
 1801 West Lafayette  
 PO Box 820  
 Jacksonville, Illinois 62651  
 PHONE : (217)245-7164 FAX (217)243-0468

**CASEY MUNICIPAL AIRPORT  
 CASEY, ILLINOIS  
 REHABILITATE WEST APRON  
 AND T-HANGAR PAVEMENT**

**TAXILANE #4  
 TYPICAL SECTIONS**

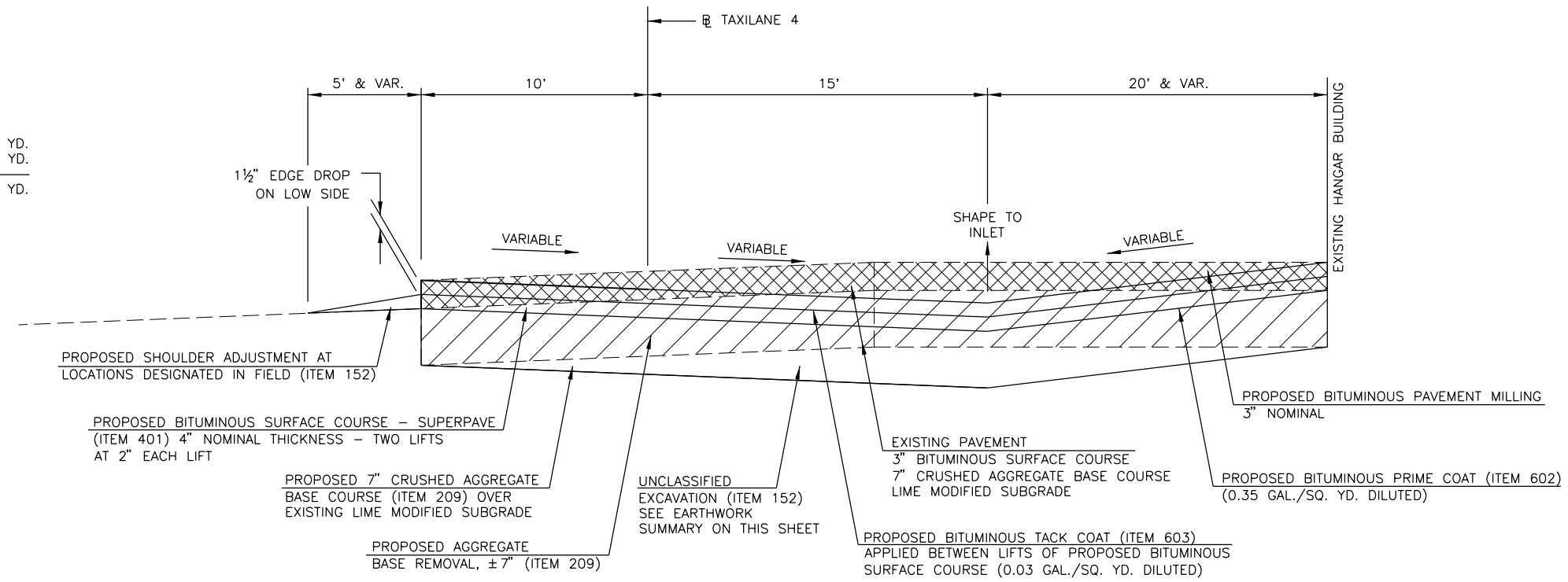
HEI PROJ. NO. 4109  
 ILL PROJ. NO. IH8-4409  
 SBC PROJ. NO.  
 3-17-SBCP-95/99/105/111

**FINAL**

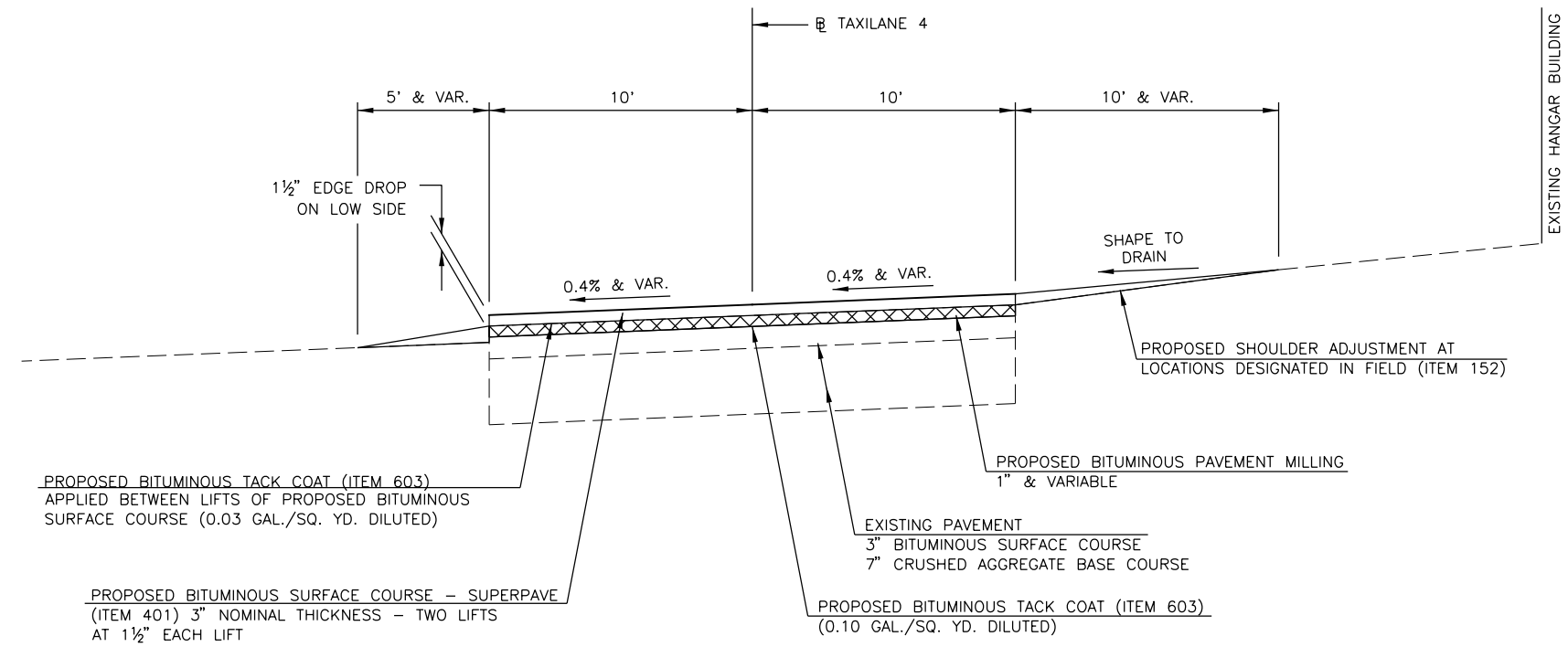
**9**

**TAXILANE 4  
 EARTHWORK SUMMARY  
 STA 602+88.00 TO STA 603+67.00**

UNCLASSIFIED EXCAVATION	=	26 CU. YD.
EMBANKMENT + 30% SHRINKAGE	=	0 CU. YD.
<b>TOTAL TO BE WASTED</b>	<b>=</b>	<b>26 CU. YD.</b>



**TAXILANE 4  
 TYPICAL SECTION**  
 NOT TO SCALE  
 STA 602+88.00 TO STA 603+67.00



**TAXILANE 4  
 TYPICAL SECTION**  
 NOT TO SCALE  
 STA 603+67.00 TO STA 604+33.79

DRAWN	-	-
CHECKED	-	-
APPROVED	-	-

REVISIONS		
NO.	BY	DATE

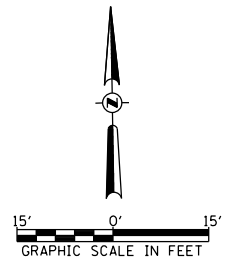


**Hutchison Engineering, Inc.**  
 SINCE 1945  
 1801 West Lafayette  
 PO Box 820  
 Jacksonvill, Illinois 62651  
 PHONE : (217)245-7164 FAX (217)243-0468

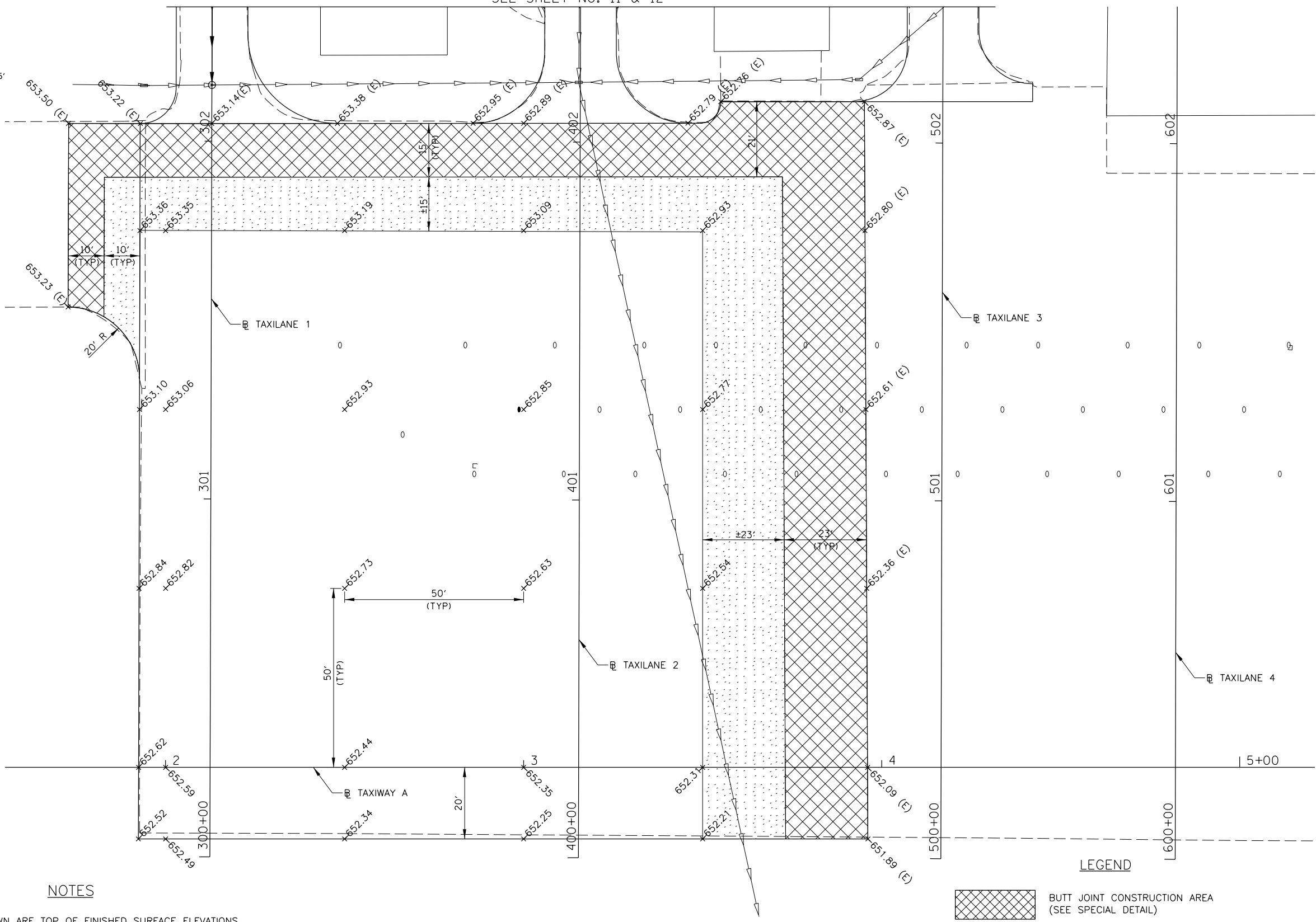
**CASEY MUNICIPAL AIRPORT  
 CASEY, ILLINOIS  
 REHABILITATE WEST APRON  
 AND T-HANGAR PAVEMENT  
 PAVEMENT LAYOUT & ELEVATIONS**

HEI PROJ. NO. 4109  
 ILL PROJ. NO. 184-4409  
 SBC PROJ. NO.  
 3-17-SBCP-95/99/105/111

**FINAL  
 10**



SEE SHEET NO. 11 & 12



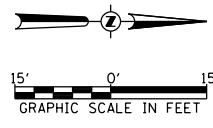
**NOTES**

- ELEVATIONS SHOWN ARE TOP OF FINISHED SURFACE ELEVATIONS. (E) SHOWN AFTER AN ELEVATION DENOTES AN EXISTING ELEVATION.
- WHERE PROPOSED BITUMINOUS SURFACE ABUTS EXISTING PAVEMENT, THE EXISTING PAVEMENT SHALL BE CUT TO PRODUCE A STRAIGHT VERTICAL FACE. PRIOR TO CONSTRUCTION OF THE BITUMINOUS SURFACE COURSE THE VERTICAL FACES OF ALL ABUTTING EXISTING PAVEMENT SHALL BE PAINTED WITH LIQUID ASPHALT. COST OF THIS WORK SHALL BE CONSIDERED INCIDENTAL TO THE CONTRACT.

AIRPORT BENCHMARK LOCATED WEST OF PARKING LOT ENTRANCE ROAD AND AIRPORT ROAD ENTRANCE. USC&GS MON. "BRASS DISK" S-210 (RESET) ELEV. 653.77

**LEGEND**

- BUTT JOINT CONSTRUCTION AREA (SEE SPECIAL DETAIL)
- BITUMINOUS SURFACE COURSE LEVELING RUNOUT AREA (1 1/2" TO 0")
- EXISTING TIEDOWN



CS006

FILENAME: 18H4409-sh1-ph2.dgn  
 PLOT DATE: 4/23/2018  
 SCALE: 30,0000' / 1"  
 USER: jolson

DRAWN	-	-
CHECKED	-	-
APPROVED	-	-
REVISIONS		
NO.	BY	DATE



**Hutchison Engineering, Inc.**  
 SINCE 1945  
 1801 West Lafayette  
 PO Box 820  
 Jacksonville, Illinois 62651  
 PHONE : (217)245-7164 FAX (217)243-0468

**CASEY MUNICIPAL AIRPORT  
 CASEY, ILLINOIS  
 REHABILITATE WEST APRON  
 AND T-HANGAR PAVEMENT**

**PAVEMENT LAYOUT & ELEVATIONS**

HEI PROJ. NO. 4109  
 ILL PROJ. NO. 18H-4409  
 SBC PROJ. NO.  
 3-17-SBCP-95/99/105/111

**FINAL**

**11**

**SHEET 11 OF 15**

PROP. 4' MH TYPE A-1-OPEN  
 FLOOR TO BE POURED IN PLACE  
 STA 302+15.7, 0.00' LT  
 GRATE = 652.92  
 N. INV = 650.11 (PR 12")  
 W. INV = 649.91 (EX 12" CONC.)  
 E. INV = 649.90 (EX 12" CONC.)

PROP. INLET  
 TYPE A-1-OPEN  
 STA 302+15.7, 0.00' LT  
 GRATE = 653.42  
 S. INV = 651.00 (PR 12")

SEE SHEET NO. 10

MATCH ELEVATION  
 OF EXISTING MANHOLE  
 GRATE

SEE SHEET NO. 12

PROPOSED HANGAR ENTRANCE  
 RESURFACING. SEE SPECIAL DETAILS  
 3' X 3' 45° FLARES (TYPICAL)

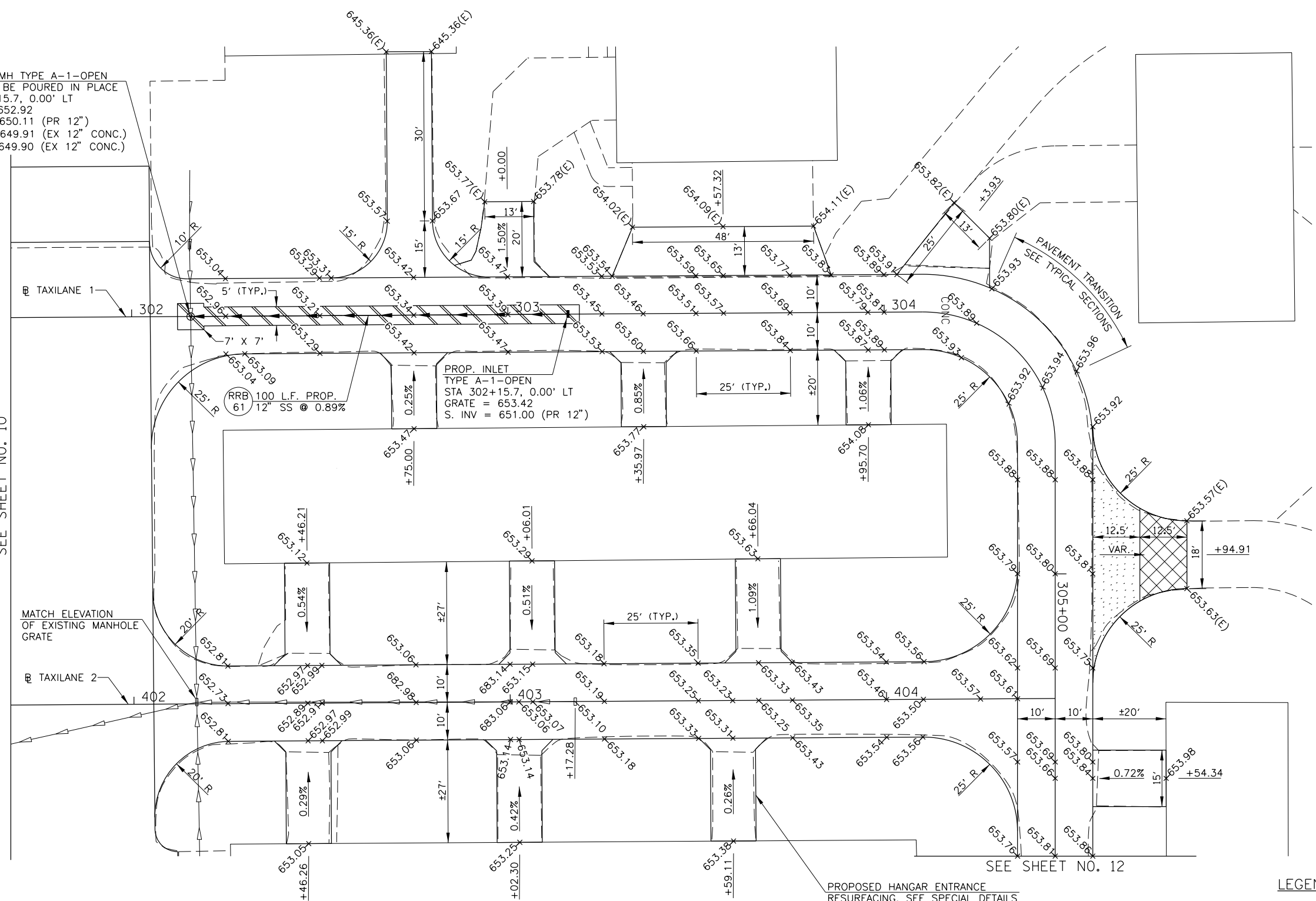
AIRPORT BENCHMARK LOCATED WEST  
 OF PARKING LOT ENTRANCE ROAD  
 AND AIRPORT ROAD ENTRANCE.  
 USC&GS MON. "BRASS DISK" S-210 (RESET)  
 ELEV. 653.77

**NOTES**

- ELEVATIONS SHOWN ARE TOP OF FINISHED SURFACE ELEVATIONS.  
(E) SHOWN AFTER AN ELEVATION DENOTES AN EXISTING ELEVATION.
- WHERE PROPOSED BITUMINOUS SURFACE ABUTS EXISTING PAVEMENT,  
THE EXISTING PAVEMENT SHALL BE CUT TO PRODUCE A STRAIGHT  
VERTICAL FACE. PRIOR TO CONSTRUCTION OF THE BITUMINOUS SURFACE  
COURSE THE VERTICAL FACES OF ALL ABUTTING EXISTING PAVEMENT  
SHALL BE PAINTED WITH LIQUID ASPHALT. COST OF THIS WORK SHALL  
BE CONSIDERED INCIDENTAL TO THE CONTRACT.
- HATCHING FOR BUTT JOINT MILLING AND SURFACE COURSE  
LEVELING RUNOUT NOT SHOWN FOR HANGAR DOOR ACCESS  
PAVEMENTS. SEE SPECIAL DETAILS.

**LEGEND**

- RRB 39 REMOVE AND REPLACE BITUMINOUS PAVEMENT, 39 SQ. YDS.
- BUTT JOINT CONSTRUCTION AREA (SEE SPECIAL DETAIL)
- BITUMINOUS SURFACE COURSE LEVELING RUNOUT AREA (1 1/2' TO 0')
- EXISTING STORM SEWER
- EXISTING UNDERDRAIN
- PROPOSED STORM SEWER



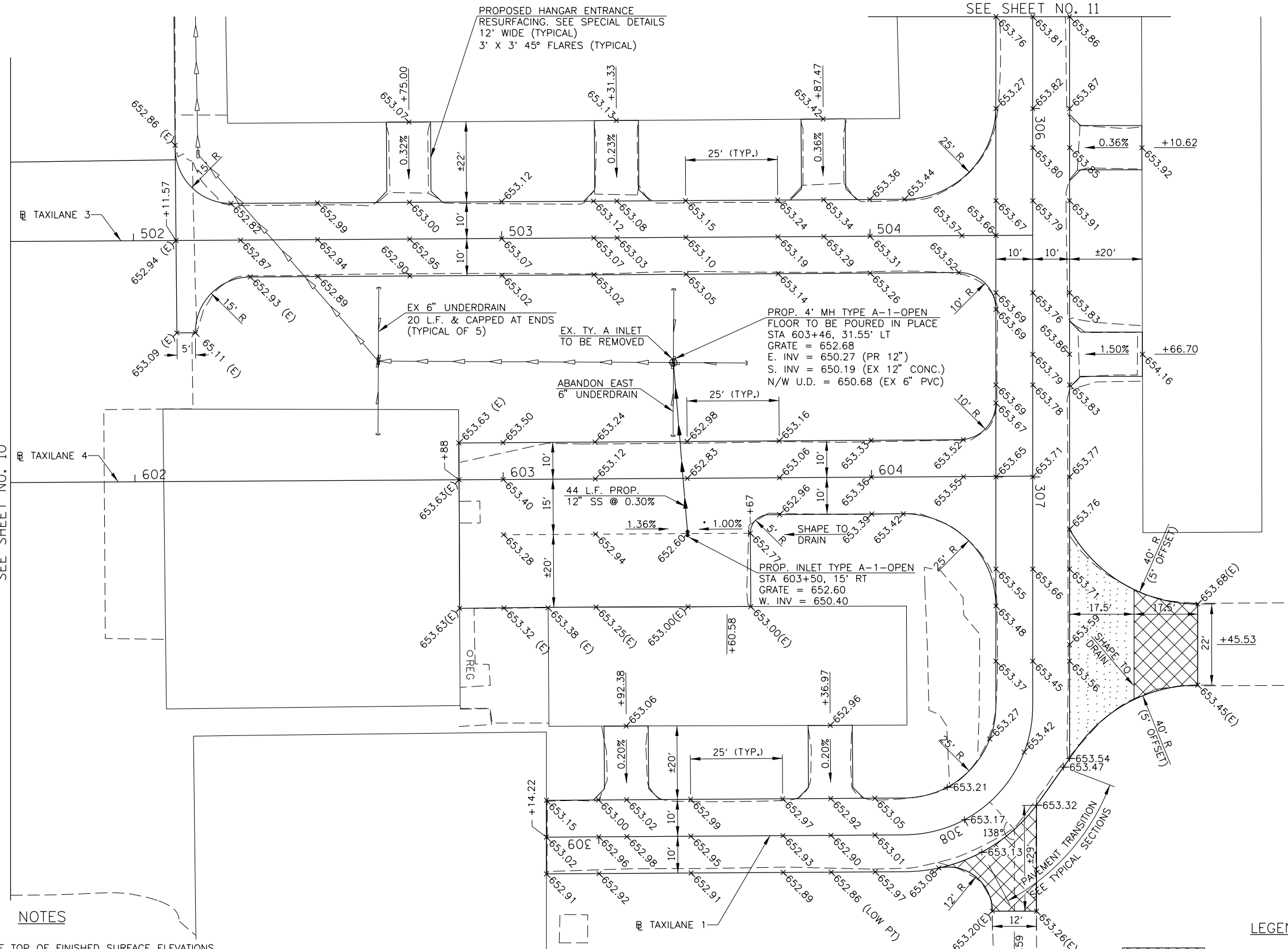
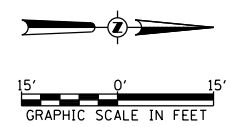
DRAWN	-	-
CHECKED	-	-
APPROVED	-	-
REVISIONS		
NO.	BY	DATE



**Hutchison Engineering, Inc.**  
 SINCE 1945  
 1801 West Lafayette  
 PO Box 820  
 Jacksonville, Illinois 62651  
 PHONE : (217)245-7164 FAX (217)243-0468

**CASEY MUNICIPAL AIRPORT  
 CASEY, ILLINOIS  
 REHABILITATE WEST APRON  
 AND T-HANGAR PAVEMENT  
 PAVEMENT LAYOUT & ELEVATIONS**

HEI PROJ. NO. 4109  
 ILL PROJ. NO. 188-4409  
 SBC PROJ. NO.  
 3-17-SBCP-95/99/105/111



SEE SHEET NO. 10

**NOTES**

- ELEVATIONS SHOWN ARE TOP OF FINISHED SURFACE ELEVATIONS. (E) SHOWN AFTER AN ELEVATION DENOTES AN EXISTING ELEVATION.
- WHERE PROPOSED BITUMINOUS SURFACE ABUTS EXISTING PAVEMENT, THE EXISTING PAVEMENT SHALL BE CUT TO PRODUCE A STRAIGHT VERTICAL FACE. PRIOR TO CONSTRUCTION OF THE BITUMINOUS SURFACE COURSE THE VERTICAL FACES OF ALL ABUTTING EXISTING PAVEMENT SHALL BE PAINTED WITH LIQUID ASPHALT. COST OF THIS WORK SHALL BE CONSIDERED INCIDENTAL TO THE CONTRACT.
- HATCHING FOR BUTT JOINT MILLING AND SURFACE COURSE LEVELING RUNOUT NOT SHOWN FOR HANGAR DOOR ACCESS PAVEMENTS. SEE SPECIAL DETAILS.

AIRPORT BENCHMARK LOCATED WEST  
 OF PARKING LOT ENTRANCE ROAD  
 AND AIRPORT ROAD ENTRANCE.  
 USC&GS MON. "BRASS DISK" S-210 (RESET)  
 ELEV. 653.77

**LEGEND**

- BUTT JOINT CONSTRUCTION AREA (SEE SPECIAL DETAIL)
- BITUMINOUS SURFACE COURSE LEVELING RUNOUT AREA (1 1/2" TO 0")
- EXISTING STORM SEWER
- EXISTING UNDERDRAIN
- PROPOSED STORM SEWER

CS006

FILENAME: 1H84409-sh1-detailed.dgn  
 PLOT DATE: 4/23/2018  
 SCALE: 30.0000' / 1"  
 USER: jolson

DRAWN	-	-
CHECKED	-	-
APPROVED	-	-

REVISIONS		
NO.	BY	DATE



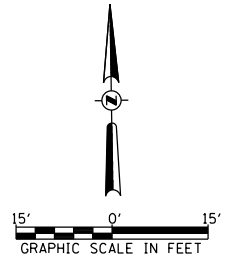
**Hutchison Engineering, Inc.**  
 SINCE 1945  
 1801 West Lafayette  
 PO Box 820  
 Jacksonville, Illinois 62651  
 PHONE : (217)245-7164 FAX (217)243-0468

**CASEY MUNICIPAL AIRPORT  
 CASEY, ILLINOIS  
 REHABILITATE WEST APRON  
 AND T-HANGAR PAVEMENT  
 TIE DOWN AND PAVEMENT  
 MARKING LAYOUT**

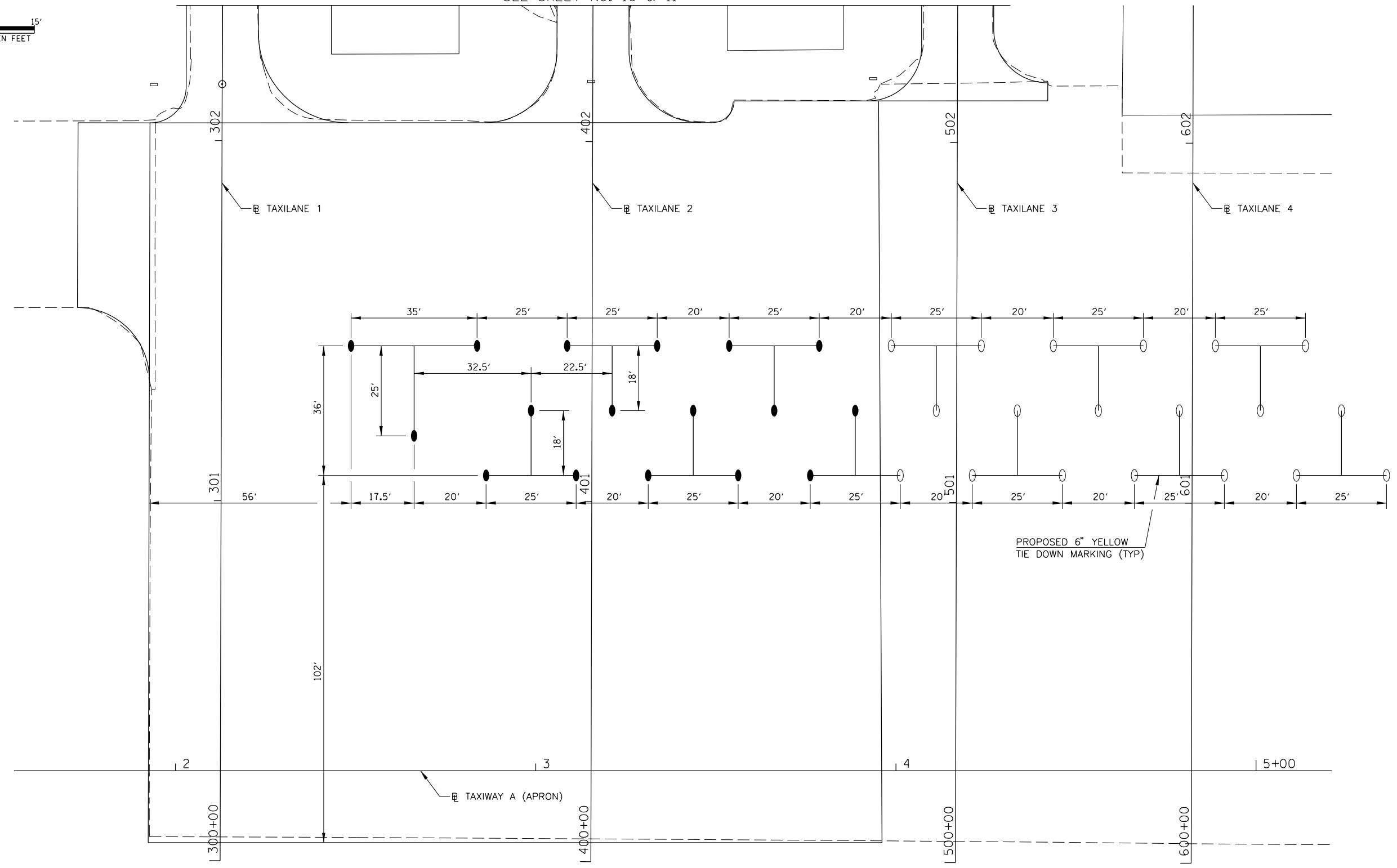
HEI PROJ. NO. 4109  
 ILL PROJ. NO. 1H8-4409  
 SBC PROJ. NO.  
 3-17-SBCP-95/99/105/111

**FINAL**  
**13**

SHEET 13 OF 15

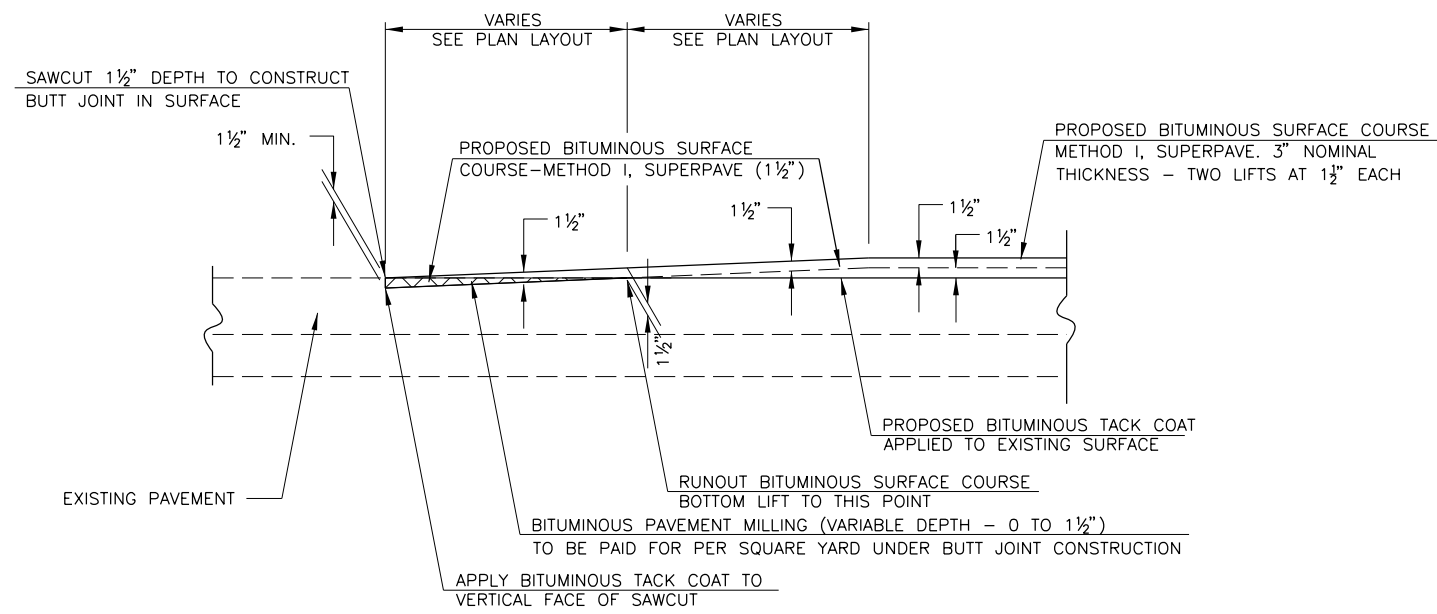


SEE SHEET NO. 10 & 11

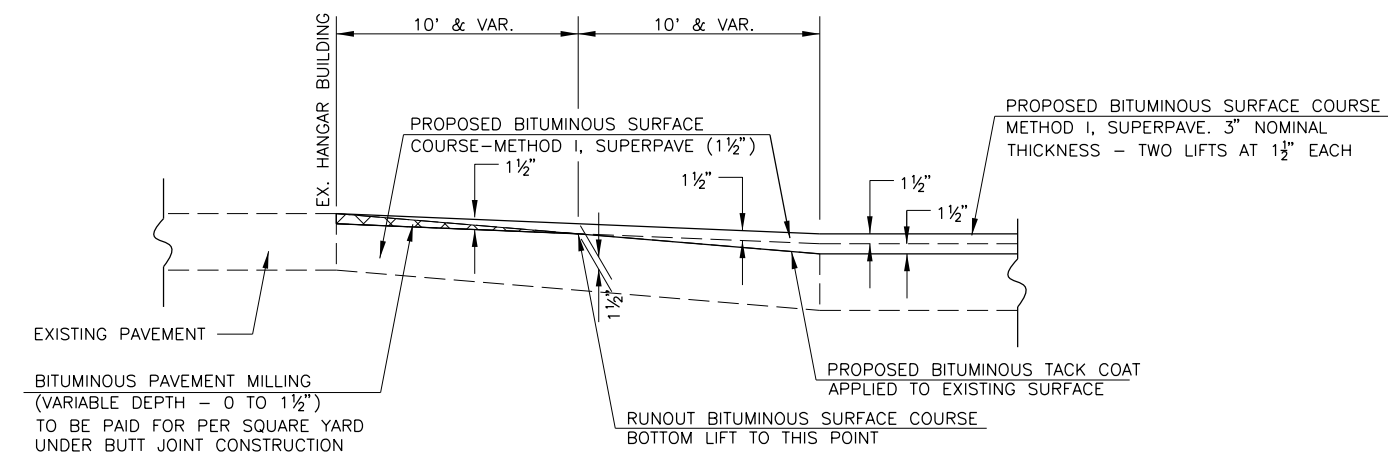


**LEGEND**

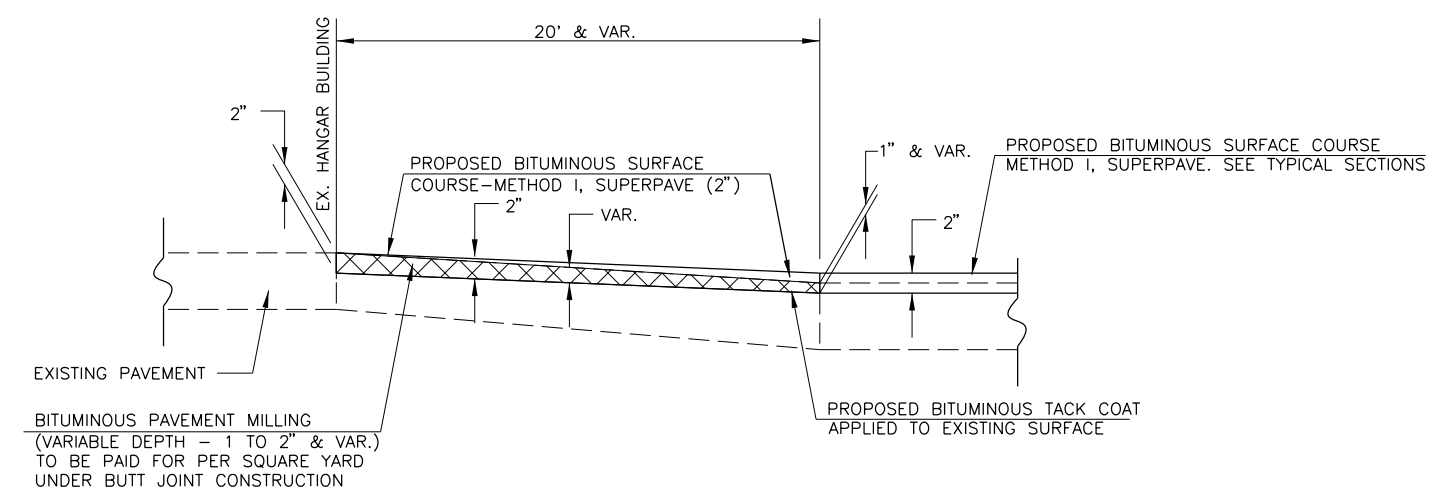
- TIEDOWN - TYPE A (SEE DETAIL) - 17 EACH
- EXISTING TIEDOWN (TO REMAIN IN PLACE) - 19 EACH



BITUMINOUS BUTT JOINT CONSTRUCTION DETAIL

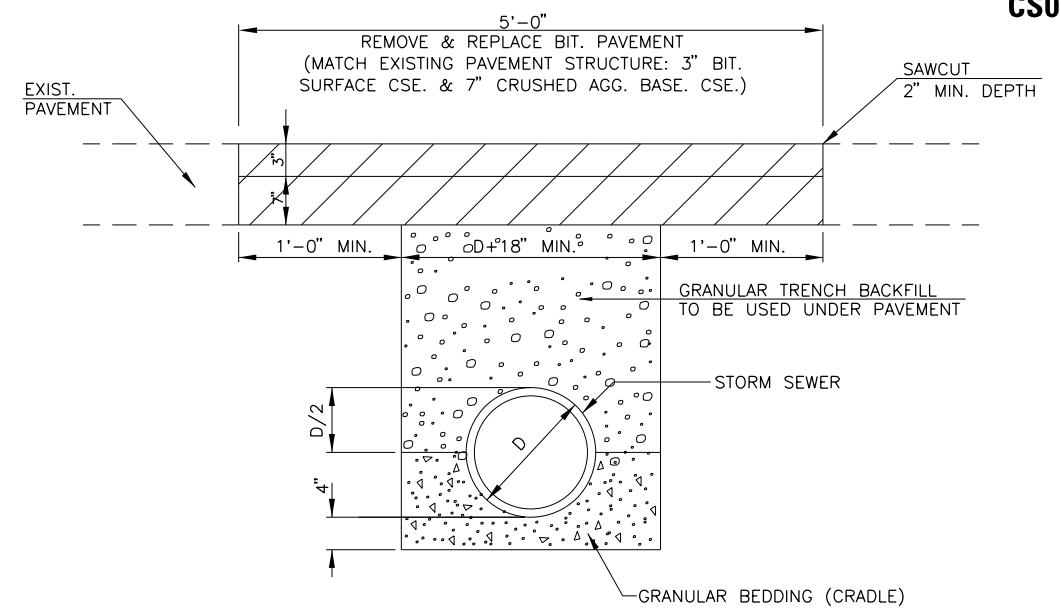


ADJACENT TO TAXILANE OVERLAY SECTIONS  
TAXILANE 1: LT SIDE, STA 302+04.93 TO 307+75.00



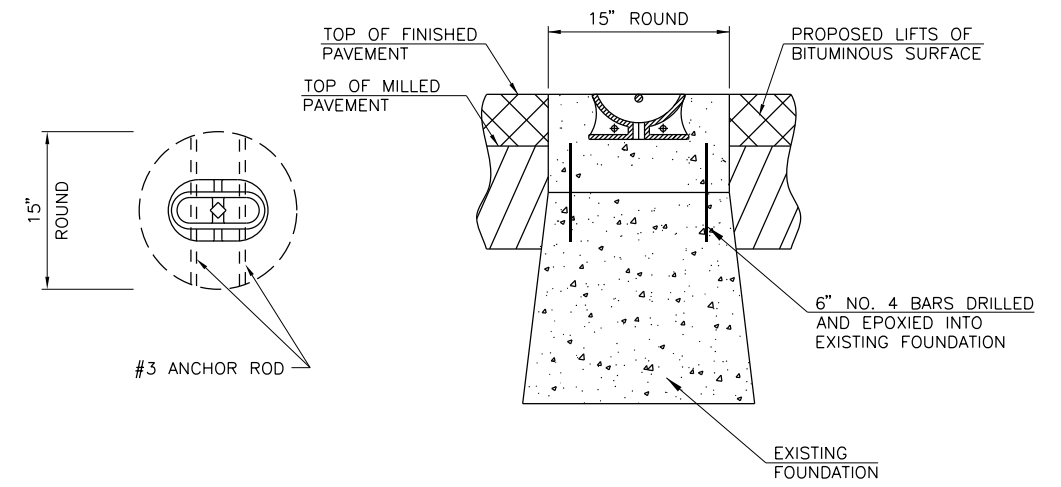
ADJACENT TO TAXILANE VARIABLE MILLING SECTIONS  
TAXILANE 1: RT SIDE, STA 302+04.93 TO 304+25.00  
TAXILANE 2: LT & RT SIDE  
TAXILANE 3: LT SIDE  
TAXILANE 4: N/A

BITUMINOUS HANGAR DOOR ACCESS DETAILS

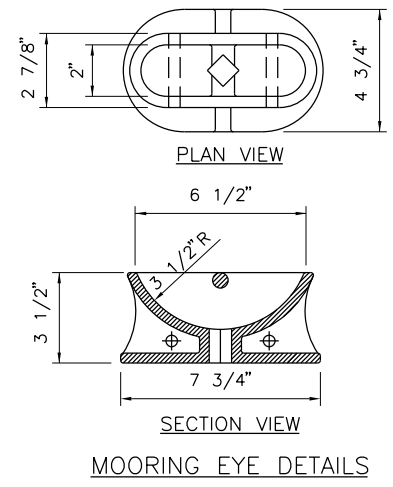


TYPICAL STORM SEWER TRENCH DETAIL

NOT TO SCALE



CONCRETE BASE DETAILS



MOORING EYE DETAILS

DETAIL OF TIEDOWN INSTALLATION

NOTES

1. CONCRETE BASE TO BE STRUCTURAL P.C. CONCRETE, ITEM 610.
2. MOORING CASTING TO BE NEENAH SEMI-STEEL AIRPORT MOORING EYE-CATALOG NO. R-3490 OR EQUIVALENT.
3. ANCHOR RODS TO BE NO. 3 DEFORMED REINFORCING STEEL 15" LONG AND BENT DOWNWARD AT 45°.
4. AFTER BITUMINOUS SURFACE COURSE HAS BEEN WAS COMPLETED, OPENING SHALL BE OR CORED.
5. THE EXISTING MOORING EYE SHALL BE REMOVED PRIOR TO PAVING OPERATIONS AND INSTALLED AFTER PAVING OPERATIONS ARE COMPLETE. TOP OF EXISTING CONCRETE TIE DOWN SHALL BE REMOVED TO A DEPTH OF 6" MINIMUM FROM THE EXISTING SURFACE.

CS006

FILENAME: 1H84409-sh1-deta02.dgn  
 PLOT DATE: 4/23/2018  
 SCALE: 30.0000' / 1"  
 USER: jolson

DRAWN	-	-
CHECKED	-	-
APPROVED	-	-
REVISIONS		
NO.	BY	DATE



**Hutchison Engineering, Inc.**  
 SINCE 1945  
 1801 West Lafayette  
 PO Box 820  
 Jacksonville, Illinois 62651  
 PHONE : (217)245-7164 FAX (217)243-0468

CASEY MUNICIPAL AIRPORT  
 CASEY, ILLINOIS  
 REHABILITATE WEST APRON  
 AND T-HANGAR PAVEMENT

SPECIAL DETAILS

HEI PROJ. NO. 4109  
 ILL PROJ. NO. 1H8-4409  
 SBC PROJ. NO.  
 3-17-SBCP-95/99/105/111

FINAL

14

SHEET 14 OF 15

DRAWN	-	-
CHECKED	-	-
APPROVED	-	-
REVISIONS		
NO.	BY	DATE



**Hutchison Engineering, Inc.**  
 SINCE 1945  
 1801 West Lafayette  
 PO Box 820  
 Jacksonville, Illinois 62651  
 PHONE : (217)245-7164 FAX (217)243-0468

**CASEY MUNICIPAL AIRPORT  
 CASEY, ILLINOIS  
 REHABILITATE WEST APRON  
 AND T-HANGAR PAVEMENT  
 STANDARD DETAILS**

HEI PROJ. NO. 4109  
 ILL PROJ. NO. IH8-4409  
 SBC PROJ. NO.  
 3-17-SBCP-95/99/105/111

**FINAL**  
**15**  
 SHEET 15 OF 15

**PLAN**

**ELEVATION**

ALTERNATE MATERIALS FOR WALLS	T
BRICK MASONRY	8 (208)
CAST-IN-PLACE CONCRETE	6 (156)
CONCRETE MASONRY UNIT	5 (125)
PRECAST REINFORCED CONCRETE SECTION	3 (75)

**ALTERNATE METHODS**

**GENERAL NOTES**

Bottom slabs shall be reinforced with a minimum of 0.24 sq. in./ft. (510 sq. mm/m) in both directions with a maximum spacing of 10 (250).

Bottom slabs may be connected to the riser as determined by the fabricator; however, only a single row of reinforcement around the perimeter may be utilized.

All dimensions are in inches (millimeters) unless otherwise shown.

DATE	REVISIONS
1-1-14	Increased height to 72 (1800) maximum.
1-1-11	Detailed rebar in slabs. Added max. limit to height. Added general notes.

**INLET - TYPE A**

STANDARD 602301-04

**SECTION THRU MANHOLE**  
(With flat slab top only)

**SECTION THRU MANHOLE**  
(With riser)

**GEOMETRIC LIMITS**

Oversized holes, as necessary for constructability, shall satisfy the following requirements:

- A minimum of 9 (230) of monolithic reinforced concrete shall be maintained above the fabricated pipe hole.
- A minimum 9 (230) inside arc length of reinforced concrete, extending vertically from bottom slab to top slab, shall be maintained between the fabricated pipe holes.
- A maximum of 60 percent of the inside perimeter of the reinforced concrete manhole walls may be removed.
- Horizontal joints through pipe holes shall be spliced when the remaining column between holes, measured along inside arc length, is less than 24 (600). See detail.
- The recommended oversized hole is equal to the O.D. of the pipe plus 4 (100).

**PRECAST MANHOLE TYPE A**  
**4' (1.22 m) DIAMETER**

STANDARD 602401-04

**TOP SLAB JOINT CONFIGURATIONS**  
FOR D = 36 (900) AND D = 4'-0" (1.22 m)

**TOP SECTION THRU INLET OR CATCH BASIN**  
FOR D = 36 (900) AND D = 4'-0" (1.22 m)

**PLAN FOR D = 36 (900)**  
(Showing Layout of Reinforcement Bars)

**TOP SECTION THRU CATCH BASIN**  
FOR D = 5'-0" (1.52 m)

**PLAN FOR D = 36 (900)**  
(Showing Layout of Welded Wire Reinforcement)

**GENERAL NOTES**

The flat slab top may be used in lieu of the tapered top shown on Standards 602001, 602016, or 602306 at the option of the Contractor or when field conditions prohibit the use of tapered tops.

Lifting holes shall be located in the sections as per the manufacturer's recommendations and grouted prior to backfilling.

All dimensions are in inches (millimeters) unless otherwise shown.

DATE	REVISIONS
1-1-16	Revised for compliance with LRFD.
4-1-16	Changed terminology to "welded wire reinforcement".

**PRECAST REINFORCED CONCRETE FLAT SLAB TOP**

STANDARD 602601-05

**CAST FRAME**

**SECTION C-C**

**SECTION B-B**  
CAST OPEN LID

**SECTION F-F**  
ADA COMPLIANT CAST OPEN LID

**SECTION D-D**  
CAST CLOSED LID  
Gray Iron Lid

**FRAME AND LIDS TYPE 1**

STANDARD 604001-04