

F.A. RTE.	SECTION	COUNTY	TOTAL SHEETS	SHEET NO.
		COOK	17	1

STATE OF ILLINOIS  
DEPARTMENT OF TRANSPORTATION  
DIVISION OF HIGHWAYS

# IDOT /IHPA STATEWIDE PULLMAN STATE HISTORICAL SITE

PARK ROAD AND PATHWAY IMPROVEMENTS 2006  
COOK COUNTY  
JOB NO. C-30-012-06  
SECTION: PULLMAN HISTORIC SITE

**INDEX OF SHEETS**

- 1 COVER SHEET
- 2 TYPICAL SECTIONS, GATE DETAILS & LEGEND
- 3 SURVEY TIES, BENCHMARKS & GENERAL NOTES
- 4-5 SUMMARY AND SCHEDULE OF QUANTITIES
- 6 REMOVAL PLAN
- 7-8 PROPOSED PLAN
- 9-10 PROPOSED STAKING LAYOUT PLAN
- 11 PROPOSED WATER MAIN PLAN
- 12 LAWN PLANTING PLAN
- 13-14 LANDSCAPING PLANS
- 15 LANDSCAPING DETAILS
- 16-17 LANDSCAPING NOTES

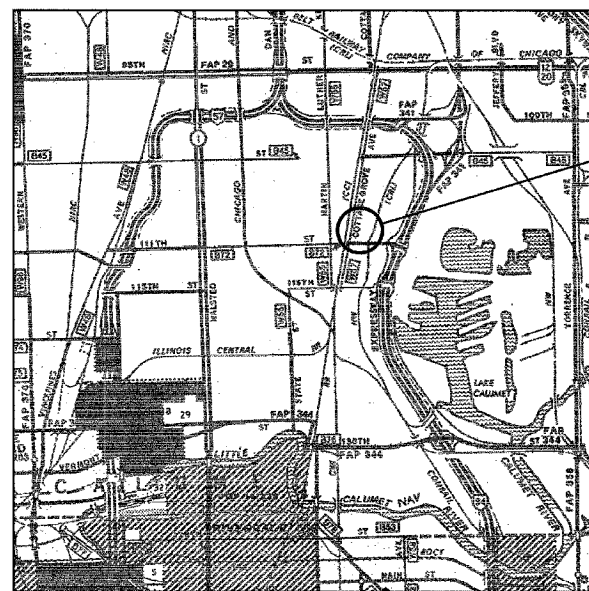
**STATE STANDARDS**

- 000001-04
- 280001-02
- 424001-04
- 701606-04
- 701801-03
- 702001-06

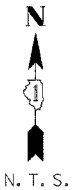


PROJECT ENGINEER: LANCE KIDD (217) 785-2933

R. 14 E.

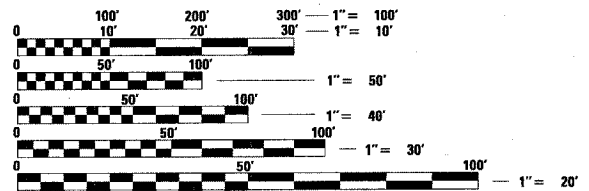


PULLMAN STATE HISTORICAL SITE



T. 37 N.

**LOCATION MAP**



FULL SIZE PLANS HAVE BEEN PREPARED USING STANDARD ENGINEERING SCALES. REDUCED SIZED PLANS WILL NOT CONFORM TO STANDARD SCALES. IN MAKING MEASUREMENTS ON REDUCED PLANS, THE ABOVE SCALES MAY BE USED.

J.U.L.I.E.  
JOINT UTILITY LOCATION INFORMATION FOR EXCAVATION  
1-800-892-0123

**CONTRACT NO. 44917**



*Philip Matrone* 3/1/06  
SIGNATURE

EXPIRATION DATE NOV. 30, 2007

STATE OF ILLINOIS  
DEPARTMENT OF TRANSPORTATION  
DIVISION OF HIGHWAYS

SUBMITTED: 05/25/2006

*Mike Hene*  
DEPUTY DIRECTOR OF HIGHWAYS, REGION ENGINEER

*Mike Hene*  
ENGINEER OF DESIGN AND ENVIRONMENT

*Milton R. Sees*  
DIRECTOR OF HIGHWAYS, CHIEF ENGINEER

**PRINTED BY THE AUTHORITY  
OF THE STATE OF ILLINOIS**