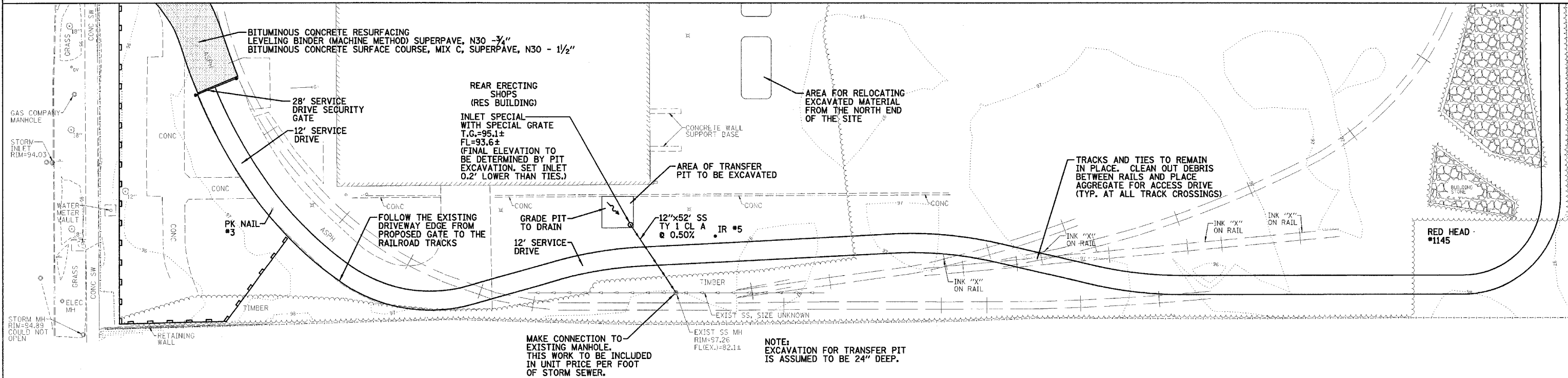


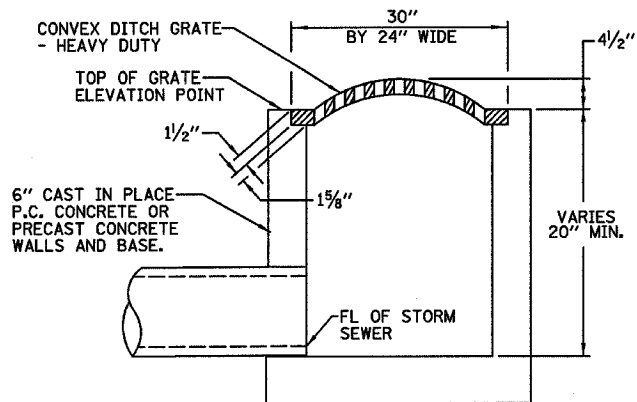
F.A. RTE.	SECTION	COUNTY	TOTAL SHEETS	SHEET NO.
		COOK	17	8
STA.		TO STA.		
FED. ROAD DIST. NO.	ILLINOIS	FED. AID PROJECT		
CONTRACT NO. 44917				

MATCH LINE PLAN SHEET 6

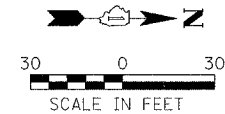


MAKE CONNECTION TO EXISTING MANHOLE. THIS WORK TO BE INCLUDED IN UNIT PRICE PER FOOT OF STORM SEWER.

NOTE: EXCAVATION FOR TRANSFER PIT IS ASSUMED TO BE 24" DEEP.



INLET SPECIAL WITH SPECIAL GRATE DETAIL



REVISIONS	
NAME	DATE

ILLINOIS DEPARTMENT OF TRANSPORTATION  
**PROPOSED PLAN**  
 IDOT / IHPA  
 PULLMAN STATE HISTORIC SITE

SCALE: VERT.  
 HORIZ.  
 DATE: 11/08/05

DRAWN BY: DJM  
 CHECKED BY: PJM