

F.A.I. RTE.	SECTION	COUNTY	TOTAL SHEETS	SHEET NO.
55	2006-017 RS	DUPAGE & WILL	17	1
STA. +		TO STA. +		
FED. ROAD DIST. NO. 1		ILLINOIS		HIGHWAY PROJECT

STATE OF ILLINOIS
DEPARTMENT OF TRANSPORTATION
DIVISION OF HIGHWAYS

PROPOSED HIGHWAY PLANS

F.A.I. 55: INTERSTATE I-55 (FRONTAGE ROADS)

SECTION: 2006-017 RS

LOC. 1: CLARENDON HILLS RD. TO CASS AVE. (W. FRONTAGE RD.)

LOC. 2: JOLIET RD. TO IL 53 (S. FRONTAGE RD.)

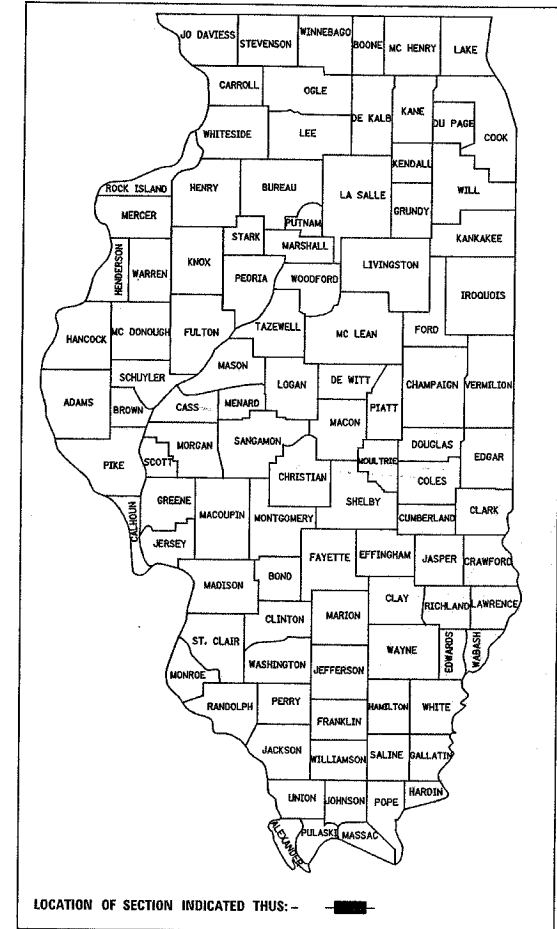
LOC. 3: AIRPORT RD. TO RENWICK RD. (E. FRONTAGE RD.)

PAVEMENT REHABILITATION

DuPAGE & WILL COUNTIES

C-91-331-06

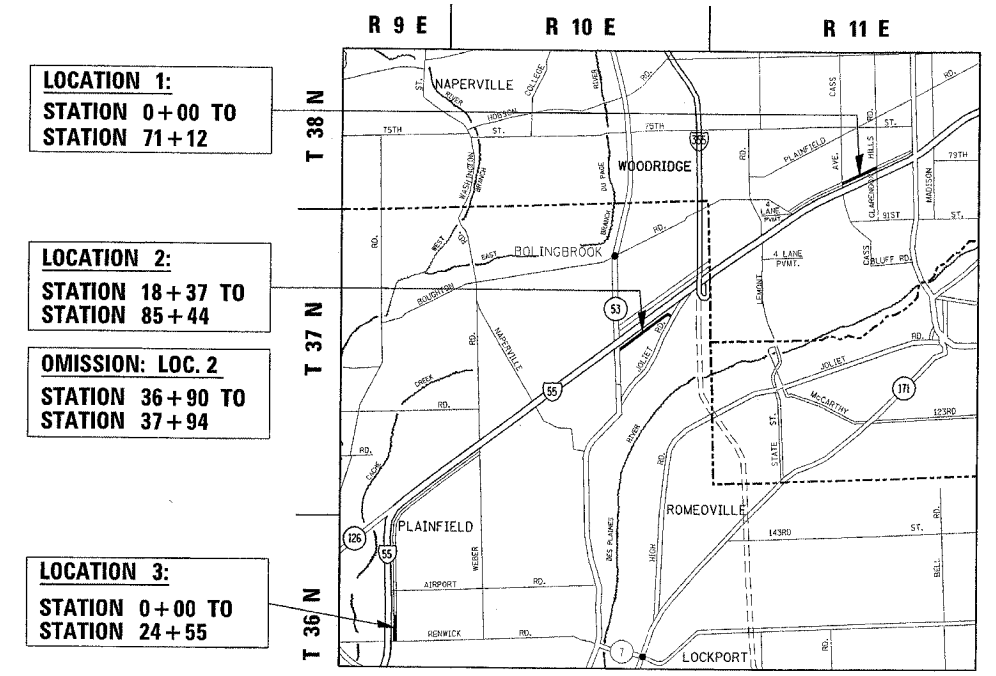
D-91-331-06



FOR INDEX OF SHEETS, SEE SHEET NO. 2

IMPROVEMENTS LOCATED IN THE VILLAGES OF
LEMONT, DARIEN, BOLINGBROOK, AND ROMEOVILLE

DISTRICT ONE - DESIGN / PLAN PREPARATION ENGINEER KEN ENG / JENPAI CHANG (847) 705-4432



LOCATION 1:
STATION 0+00 TO
STATION 71+12

LOCATION 2:
STATION 18+37 TO
STATION 85+44

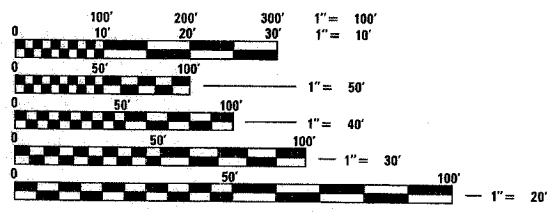
OMISSION: LOC. 2
STATION 36+90 TO
STATION 37+94

LOCATION 3:
STATION 0+00 TO
STATION 24+55



TRAFFIC DATA

LOC. 1: 2005 ADT = 2,900
LOC. 2: 2004 ADT = 8,900
LOC. 3: N/A



FULL SIZE PLANS HAVE BEEN PREPARED USING STANDARD ENGINEERING SCALES, REDUCED SIZED PLANS WILL NOT CONFORM TO STANDARD SCALES, IN MAKING MEASUREMENTS ON REDUCED PLANS, THE ABOVE SCALES MAY BE USED.

CONTRACT NO. 60B41

DOWNERS GROVE, DuPAGE, AND PLAINFIELD TOWNSHIPS

LOCATION 1: GROSS & NET LENGTH OF IMPROVEMENT = 7,112 FEET = 1.35 MILES
LOCATION 2: GROSS LENGTH OF IMPROVEMENT = 6,707 FEET = 1.27 MILES
NET LENGTH OF IMPROVEMENT = 6,603 FEET = 1.25 MILES
LOCATION 3: GROSS & NET LENGTH OF IMPROVEMENT = 2,455 FEET = 0.46 MILE

STATE OF ILLINOIS
DEPARTMENT OF TRANSPORTATION
DIVISION OF HIGHWAYS

SUBMITTED May 2, 2006

Diane M. O'Keefe/ed
DEPUTY DIRECTOR OF HIGHWAYS, REGION ENGINEER

Mike Hine/10
ENGINEER OF DESIGN AND ENVIRONMENT

Milton L. Sear, P.E./10
DIRECTOR OF HIGHWAYS, CHIEF ENGINEER

PRINTED BY THE AUTHORITY
OF THE STATE OF ILLINOIS

FOR UTILITY INFORMATION
CALL J.U.L.I.E. 1-800-892-0123
"JOINT UTILITY LOCATION INFORMATION FOR EXCAVATION"