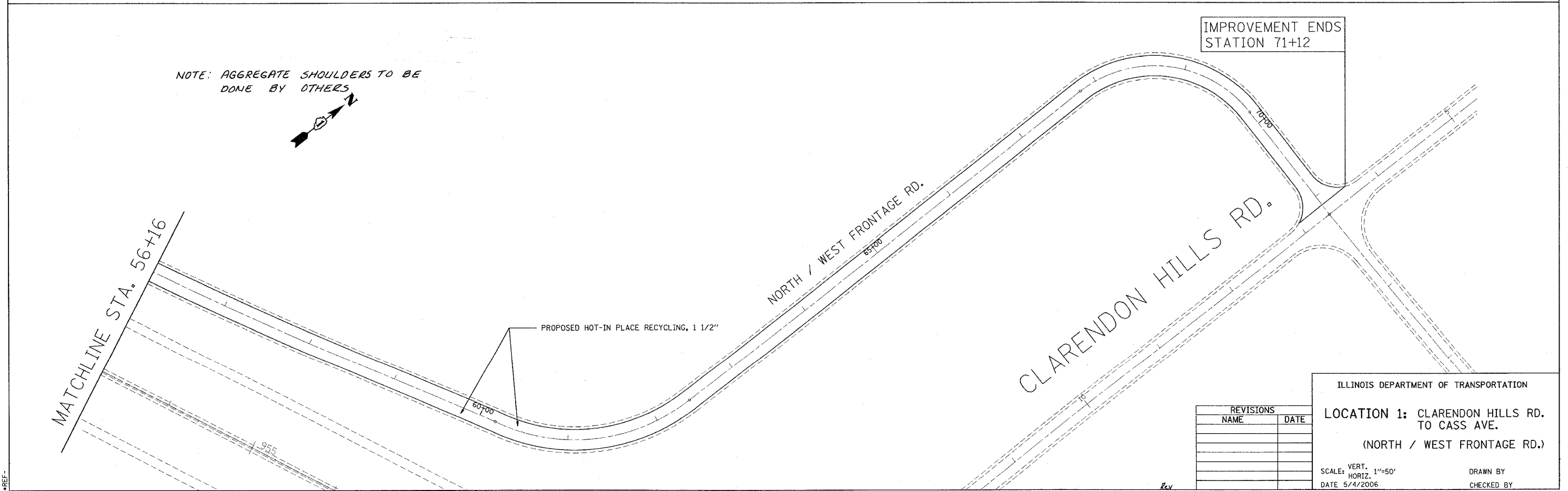
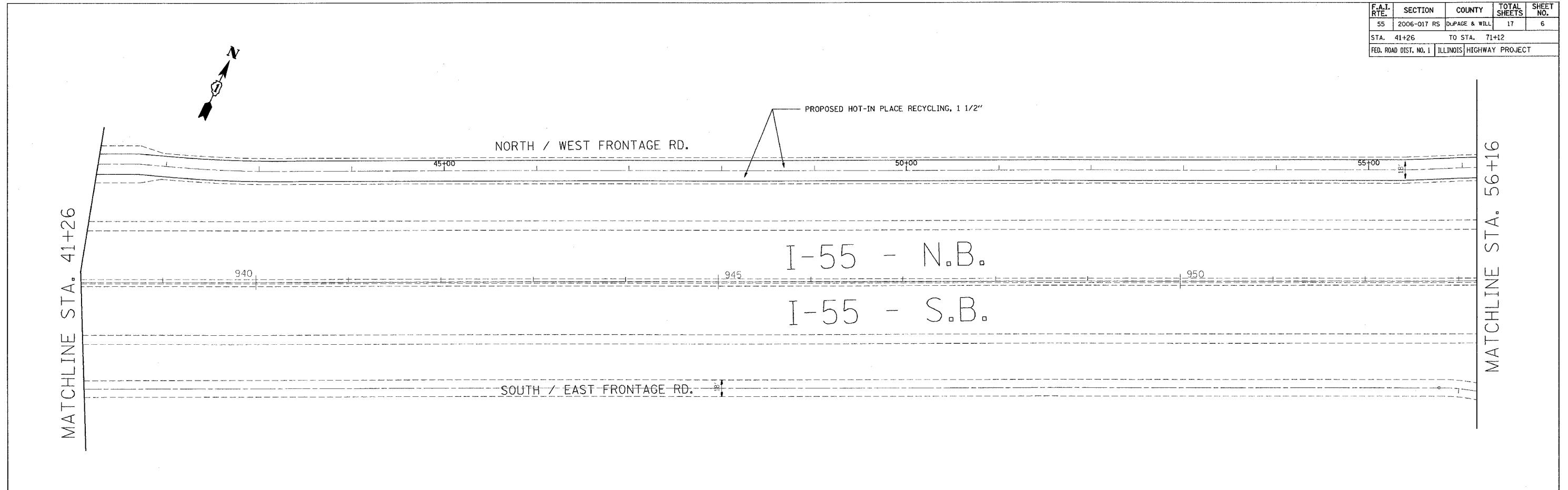


F.A.I. RTE.	SECTION	COUNTY	TOTAL SHEETS	SHEET NO.
55	2006-017 RS	DUPAGE & WILL	17	6
STA. 41+26		TO STA. 71+12		
FED. ROAD DIST. NO. 1		ILLINOIS HIGHWAY PROJECT		



5/4/2006
c:\projects\60b41\31068design-aa.dgn
*REF-
*REF-

REVISIONS	
NAME	DATE

ILLINOIS DEPARTMENT OF TRANSPORTATION

LOCATION 1: CLARENDON HILLS RD. TO CASS AVE.
(NORTH / WEST FRONTAGE RD.)

SCALE: VERT. 1"=50'
HORIZ. 1"=50'

DATE 5/4/2006

DRAWN BY _____
CHECKED BY _____