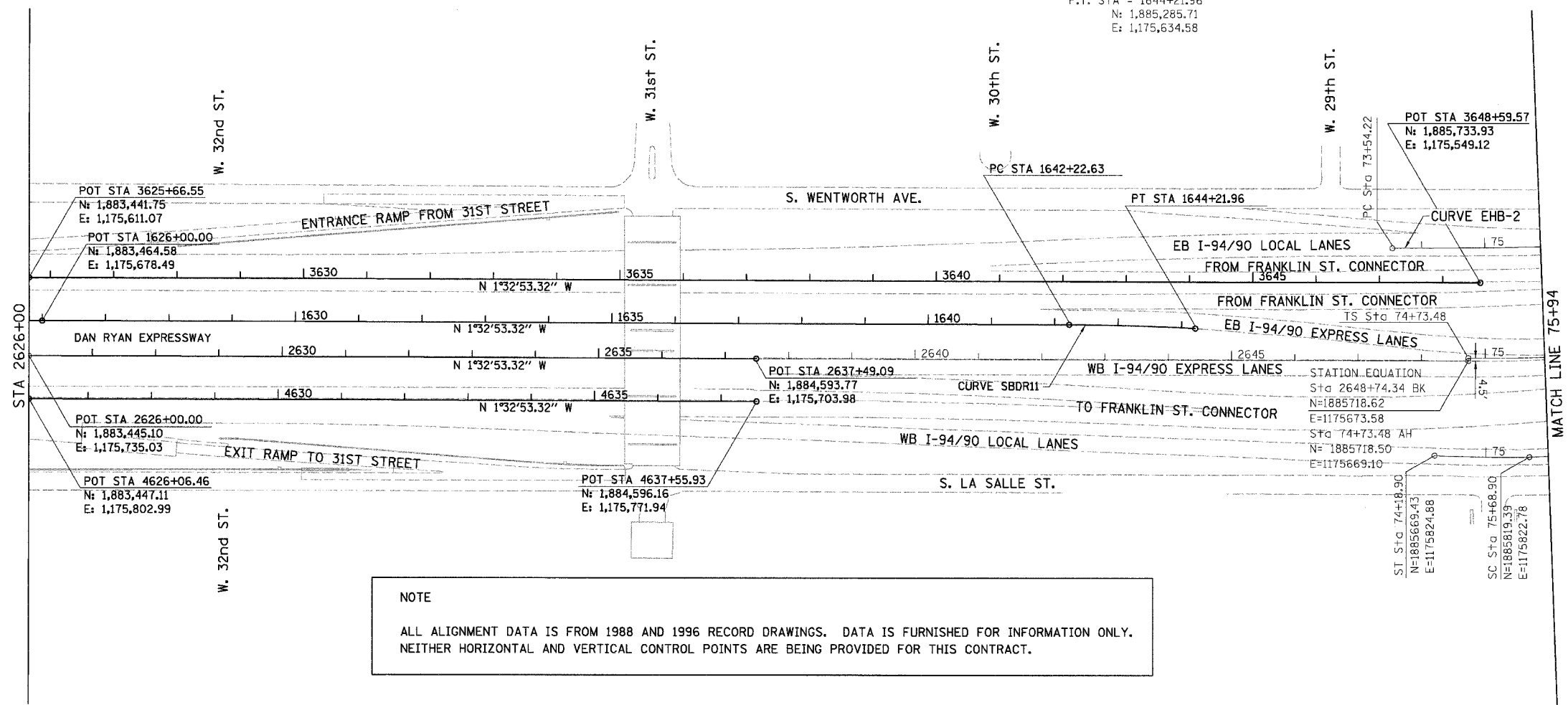


F.A.I.	SECTION	COUNTY	TOTAL SHEETS	SHEET NO.
94/90	2003-029	COOK	344	14
STA.		TO STA.		
FED. ROAD DIST. NO.	ILLINOIS	FED. AID PROJECT		

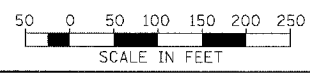
62581

PROP. CURVE SBDR11
 PI STA. = 1643+22.32
 N: = 1,885,186.06
 E: = 1,175,631.95
 Δ = 3° 03' 18" (RT)
 D = 1° 31' 57"
 R = 3,738.57'
 T = 99.69'
 L = 199.34'
 E = 1.33'
 P.C. STA = 1642+22.63
 N: = 1,885,086.40
 E: = 1,175,634.65
 P.T. STA = 1644+21.96
 N: = 1,885,285.71
 E: = 1,175,634.58



NOTE
 ALL ALIGNMENT DATA IS FROM 1988 AND 1996 RECORD DRAWINGS. DATA IS FURNISHED FOR INFORMATION ONLY. NEITHER HORIZONTAL AND VERTICAL CONTROL POINTS ARE BEING PROVIDED FOR THIS CONTRACT.

BOWMAN, BARRETT & ASSOCIATES INC.
 CONSULTING ENGINEERS
 Chicago, Illinois
 312.228.0100
 www.bbainc.com



REVISIONS	
NAME	DATE

ILLINOIS DEPARTMENT OF TRANSPORTATION
 F.A.I. 94/90 (DAN RYAN EXPRESSWAY)
 SB DAN RYAN ELEVATED BRIDGE
 REPAIR FROM 15TH TO 28TH STREETS
 ALIGNMENT PLAN
 STA. 2626+00 TO STA. 75+94
 SCALE: 1"=100'
 DATE: 4/14/2006
 DRAWN BY: RA
 CHECKED BY: RS

CAL01
 4/14/2006