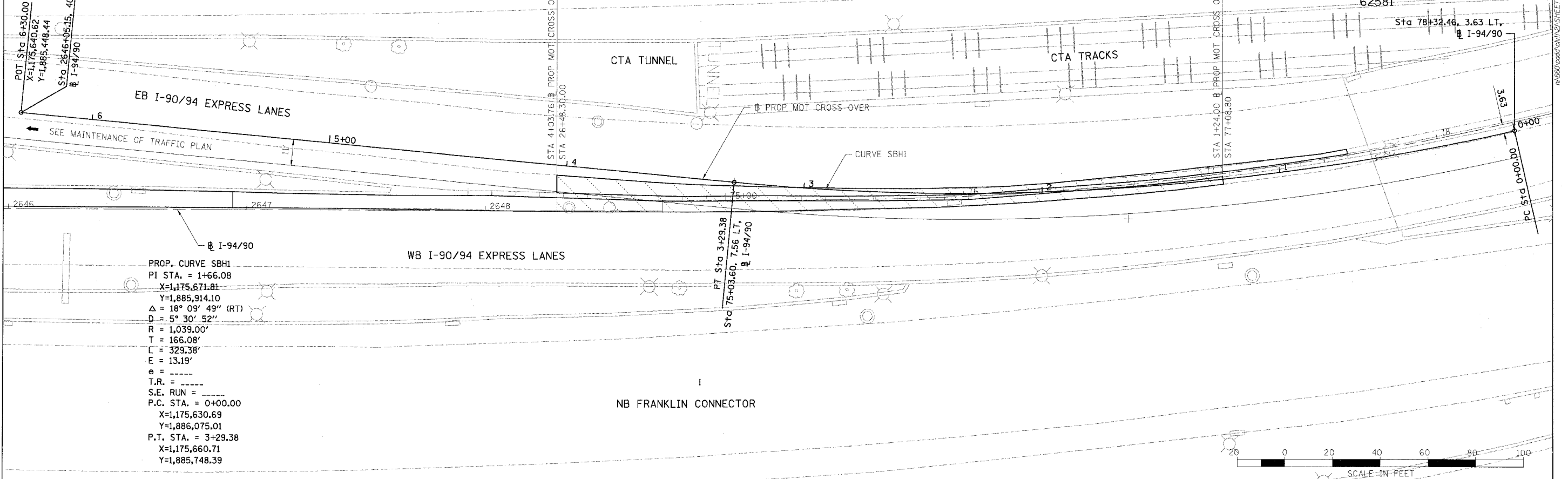
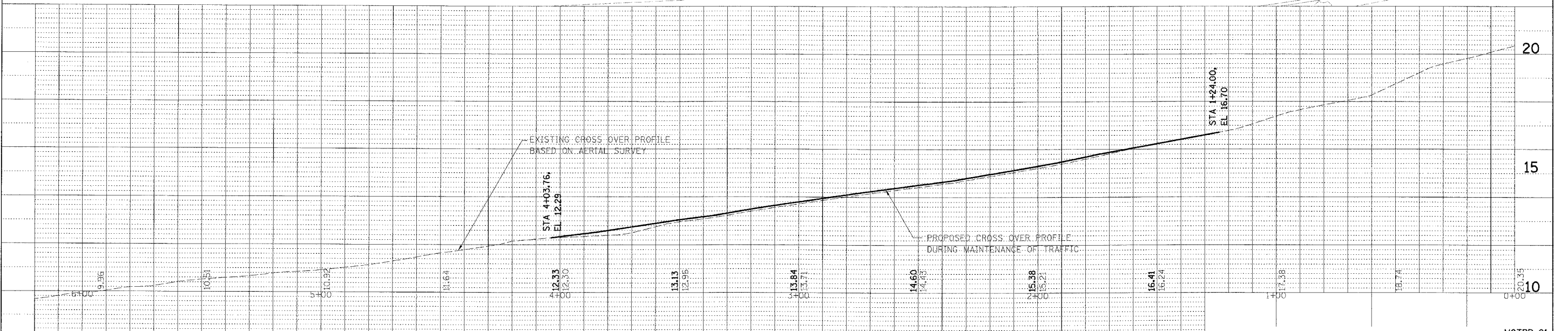
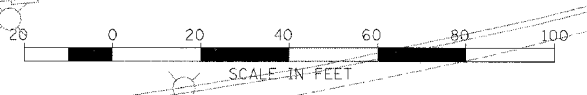


F.A.I.	SECTION	COUNTY	TOTAL SHEETS	SHEET NO.
94/90	* 2003-0291	COOK	344	24
STA.	TO STA.			
62581				
FED. ROAD DIST. NO.	ILLINOIS	FED. AID PROJECT		

NOTE
ALIGNMENT DATA IS FOR INFORMATION ONLY.
NEITHER HORIZONTAL AND VERTICAL CONTROL POINTS
ARE BEING PROVIDED FOR THIS CONTRACT.



PROP. CURVE SBH1
PI STA. = 1+66.08
X=1,175,671.81
Y=1,885,914.10
Δ = 18° 09' 49" (RT)
D = 5° 30' 52"
R = 1,039.00'
T = 166.08'
L = 329.38'
E = 13.19'
e = -----
T.R. = -----
S.E. RUN = -----
P.C. STA. = 0+00.00
X=1,175,630.69
Y=1,886,075.01
P.T. STA. = 3+29.38
X=1,175,660.71
Y=1,885,748.39



PLAN	SURVEYED	DATE
	NOTED	
	CHECKED	
	BY	
	DATE	

PROFILE	SURVEYED	DATE
	NOTED	
	CHECKED	
	BY	
	DATE	

BOWMAN, BARRETT & ASSOCIATES INC.
CONSULTING ENGINEERS
Chicago, Illinois
312.228.0100
www.bbainc.com

REVISIONS	NAME	DATE

ILLINOIS DEPARTMENT OF TRANSPORTATION
F.A.I. 94/90 (DAN RYAN EXPRESSWAY)
SB DAN RYAN ELEVATED BRIDGE
REPAIR FROM 15TH TO 28TH STREETS
PROPOSED MAINTENANCE OF TRAFFIC
CROSS OVER BETWEEN 31ST ST AND 28TH PL
SCALE: 1"=20'
DATE: 5/12/2006
DRAWN BY: RA
CHECKED BY: RS

PAGE 02 OF 03 (SHEET 5) SHEET 5 660 2 (C) 2006