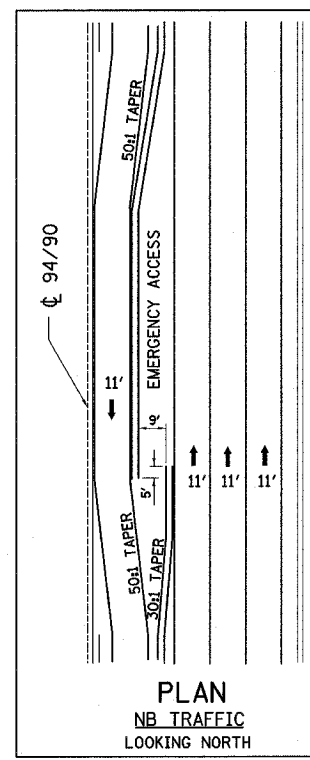
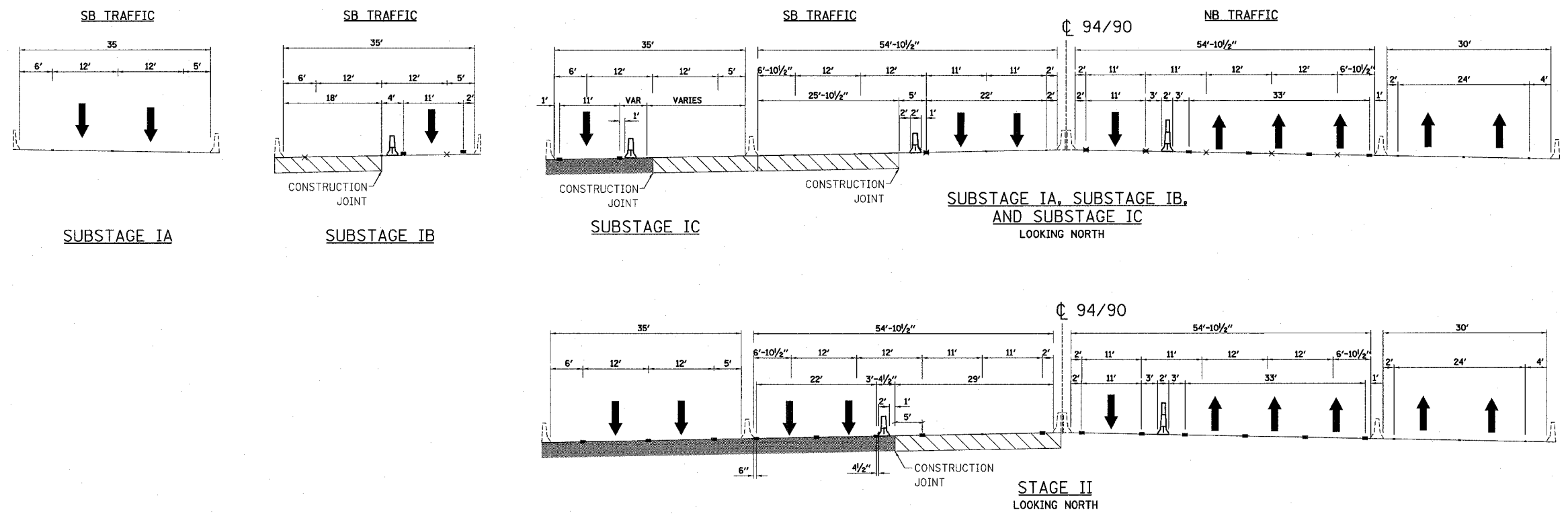
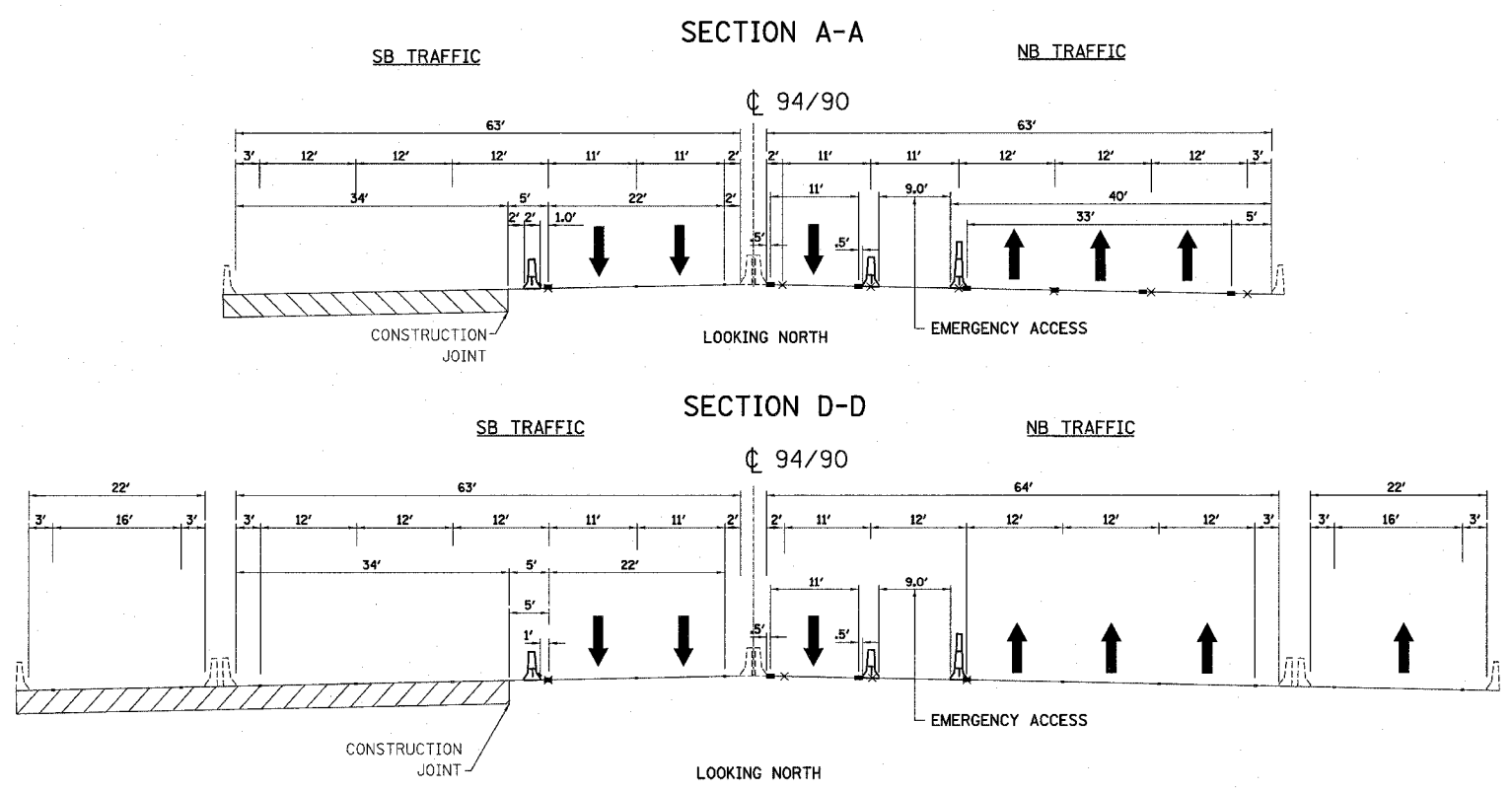


F.A.I.	SECTION	COUNTY	TOTAL SHEETS	SHEET NO.
94/90	*2003-029I	COOK	344	29
STA.		TO STA.		
FED. ROAD DIST. NO.		ILLINOIS	FED. AID PROJECT	

62581



SUGGESTED LOCATIONS - EMERGENCY ACCESS



- LEGEND**
- ↑ TRAFFIC DIRECTION
 - EXISTING PAVEMENT MARKING
 - ⊗ REMOVE EXISTING PAVEMENT MARKING
RAISED REFLECTIVE PAVEMENT MARKING REMOVAL
 - TEMPORARY PAVEMENT MARKING
 - ▨ WORK ZONE
 - ⌄ TEMPORARY CONCRETE BARRIER
 - ⌄ TEMPORARY CONCRETE BARRIER
WITH TEMPORARY PAVEMENT MARKING - LINE 6"
 - ⌄ TEMPORARY CONCRETE BARRIER
WITH MODULAR GLARE SCREEN SYSTEM
 - ▨ OVERLAYED PAVEMENT
 - ⌄ EXISTING BARRIER

REVISIONS	NAME	DATE

MTS-04

ILLINOIS DEPARTMENT OF TRANSPORTATION
 F.A.I. 94/90 (DAN RYAN EXPRESSWAY)
 SB DAN RYAN ELEVATED BRIDGE
 REPAIR FROM 15TH TO 28TH STREETS
 MAINTENANCE OF TRAFFIC PLAN
 GENERAL NOTES AND TYPICAL SECTIONS

SCALE: -NTS DRAWN BY: RA
 DATE: 5/25/2006 CHECKED BY: RS

BOWMAN, BARRETT & ASSOCIATES INC.
 CONSULTING ENGINEERS
 Chicago, Illinois
 312.228.0100
 www.bbainc.com