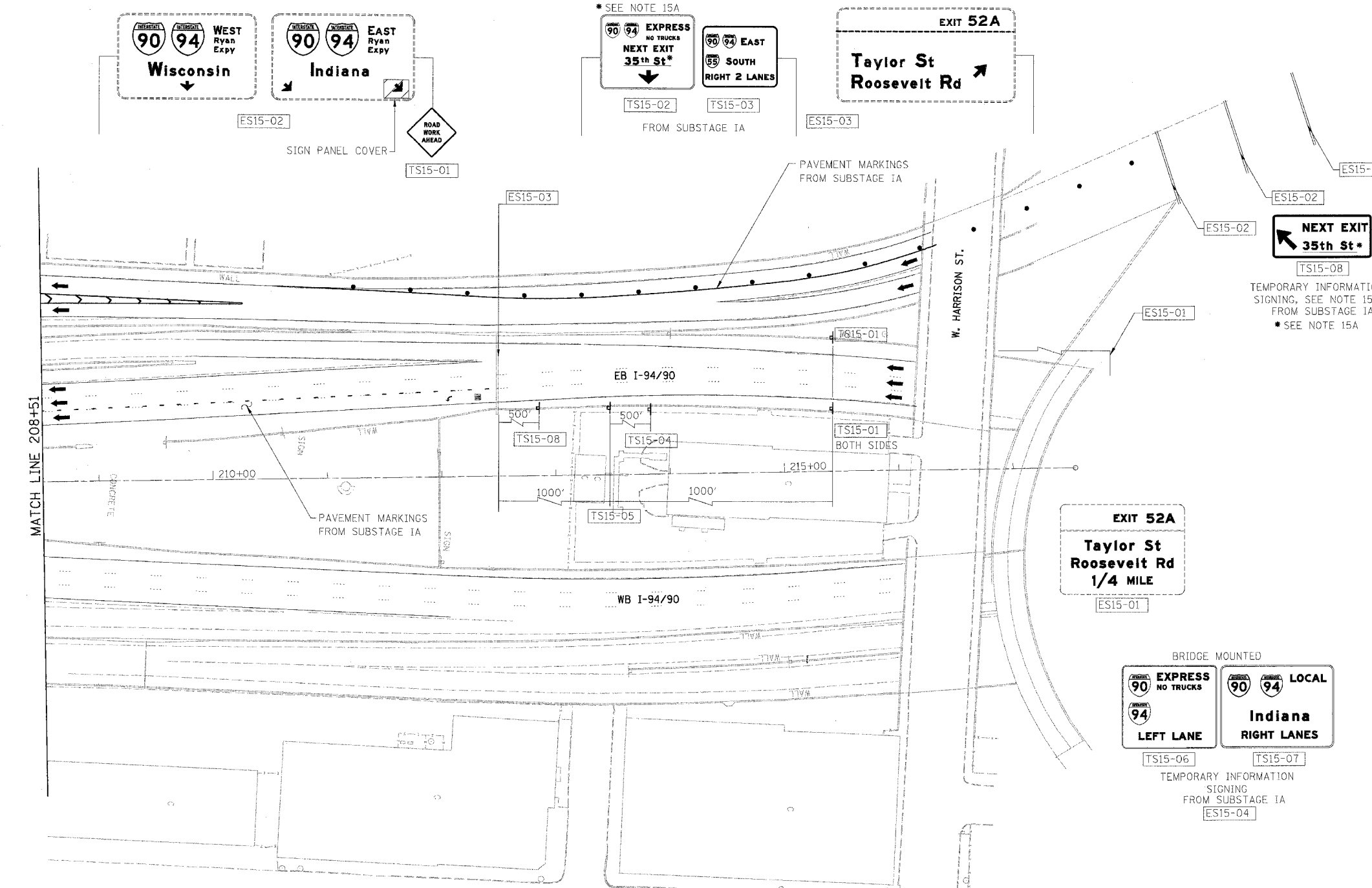


F.A.I.	SECTION	COUNTY	TOTAL SHEETS	SHEET NO.
94/90	2003-0291	COOK	344	60
STA.		TO STA.		
FED. ROAD DIST. NO.		ILLINOIS FED. AID PROJECT		
62581				



- LEGEND**
- WORK ZONE
  - DIRECTION OF TRAFFIC
  - DRUM OR BARRICADE TYPE II WITH STEADY BURN LIGHT
  - IMPACT ATTENUATORS, TEMPORARY (NON-REDIRECTIVE), TEST LEVEL 3
  - BARRICADE TYPE III
  - TEMPORARY CONCRETE BARRIER
  - ① LINE 4" (YELLOW EDGE LINE)
  - ② LINE 4" (WHITE EDGE LINE)
  - ③ LINE 4" (SKIP DASH, 6' SKIP - 2' DASH, WHITE)
  - ④ LINE 5" (SKIP DASH, 30' SKIP - 10' DASH, WHITE)
  - ⑤ LINE 8" (WHITE LINE)
  - ⑥ LINE 8" (SKIP DASH, 12' SKIP - 3' DASH, WHITE)
  - ⑦ LINE 12" (DIAGONAL, 30' C-C)
  - ⑧ LINE 12" (DIAGONAL, 50' C-C)
  - ⑨ LETTERS AND SYMBOLS
  - ESx-xx EXISTING OVERHEAD OR CANTILEVER SIGNS
  - GSx-xx EXISTING POST MOUNTED SIGNS
  - TSx-xx TEMPORARY SIGNS

15A. IMPORTANT TO COORDINATE NEXT EXIT STREET NAME WITH CONTRACT 62303 THIS CONTRACT 62581 IS RESPONSIBLE FOR THE TEMPORARY SIGNING

ROAD WORK AHEAD INCLUDED IN "TRAFFIC CONTROL AND PROTECTION, (EXPRESSWAY)" ORANGE BACKGROUND BLACK LEGEND FROM SUBSTAGE IA

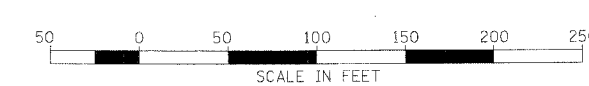
South Suburbs USE 94 EAST 57 SOUTH  
Southwest Suburbs USE 55 SOUTH

EXPRESS NO TRUCKS LEFT EXIT 1000 FEET

NOTE: ALL PAVEMENT MARKINGS ON THIS SHEET WILL BE PAVEMENT MARKING TAPE, TYPE III, UNLESS OTHERWISE NOTED. MOT-30

REVISIONS		ILLINOIS DEPARTMENT OF TRANSPORTATION F.A.I. 94/90 (DAN RYAN EXPRESSWAY) SB DAN RYAN ELEVATED BRIDGE REPAIR FROM 15TH TO 28TH STREETS MAINTENANCE OF TRAFFIC PLAN - SUBSTAGE IB STA. 208+51 TO STA.
NAME	DATE	
		SCALE: 1"= 50' DATE: 5/12/2006 DRAWN BY: RA CHECKED BY: RS

BOWMAN, BARRETT & ASSOCIATES INC  
CONSULTING ENGINEERS  
Chicago, Illinois  
312.228.0100  
www.bbandinc.com



14-660(02a)6/03/12/2006 SHEET 5660-2/60/07 Design 9/5/2006