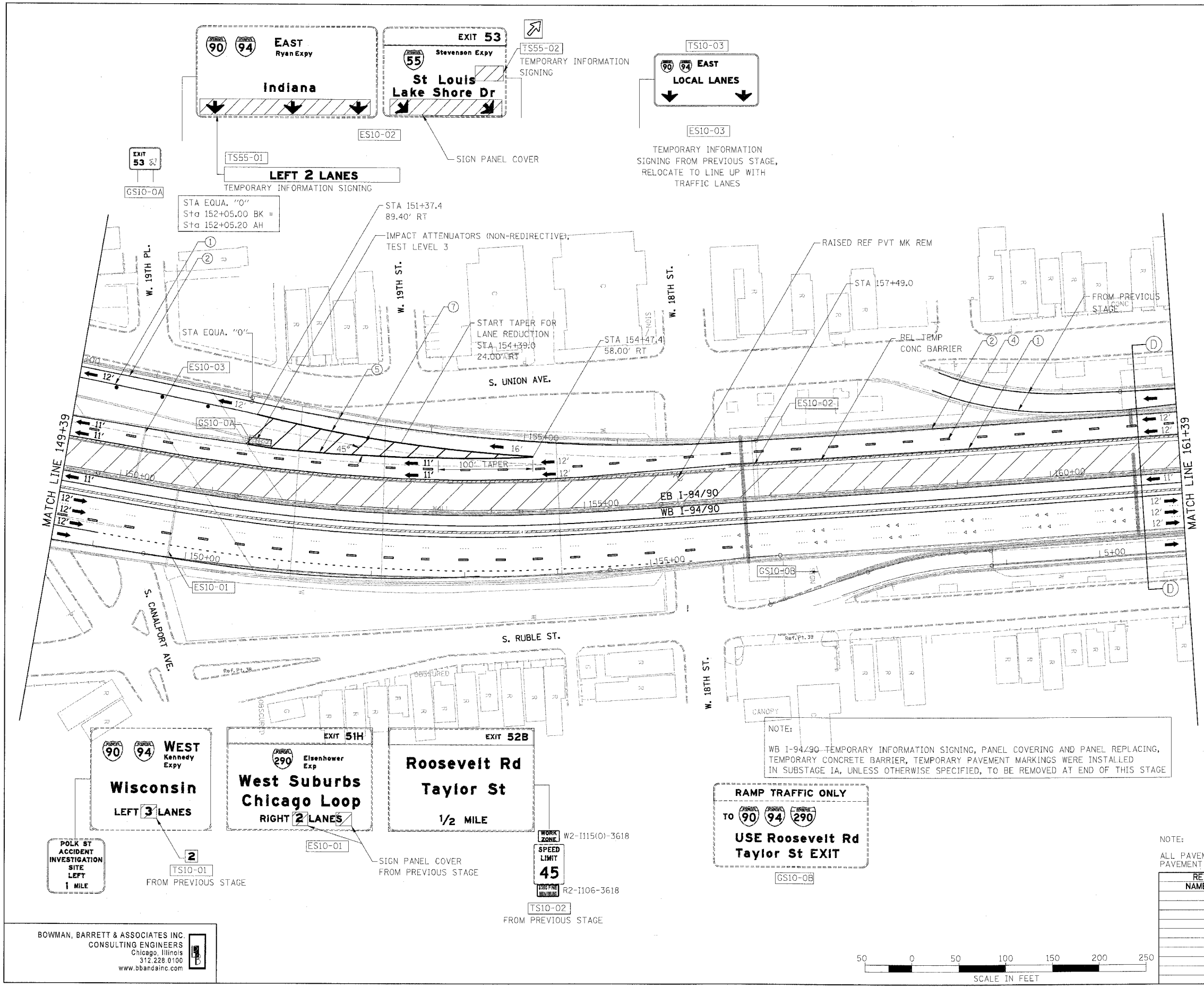


F.A.I.	SECTION	COUNTY	TOTAL SHEETS	SHEET NO.
94/90	2003-0291	COOK	344	85
STA.	TO STA.			
FED. ROAD DIST. NO.	ILLINOIS	FED. AID PROJECT		
62581				



- LEGEND**
- WORK ZONE
  - DIRECTION OF TRAFFIC
  - DRUM OR BARRICADE TYPE II WITH STEADY BURN LIGHT
  - IMPACT ATTENUATORS, TEMPORARY (NON-REDIRECTIVE), TEST LEVEL 3
  - BARRICADE TYPE III
  - TEMPORARY CONCRETE BARRIER
  - ① LINE 4" (YELLOW EDGE LINE)
  - ② LINE 4" (WHITE EDGE LINE)
  - ③ LINE 4" (SKIP DASH, 6' SKIP - 2' DASH, WHITE)
  - ④ LINE 5" (SKIP DASH, 30' SKIP - 10' DASH, WHITE)
  - ⑤ LINE 8" (WHITE LINE)
  - ⑥ LINE 8" (SKIP DASH, 12' SKIP - 3' DASH, WHITE)
  - ⑦ LINE 12" (DIAGONAL, 30' C-C)
  - ⑧ LINE 12" (DIAGONAL, 500' C-C)
  - ⑨ LETTERS AND SYMBOLS
  - ESx-xx EXISTING OVERHEAD OR CANTILEVER SIGNS
  - GSx-xx EXISTING POST MOUNTED SIGNS
  - TSx-xx TEMPORARY SIGNS

**NOTE:**  
WB I-94/90 TEMPORARY INFORMATION SIGNING, PANEL COVERING AND PANEL REPLACING, TEMPORARY CONCRETE BARRIER, TEMPORARY PAVEMENT MARKINGS WERE INSTALLED IN SUBSTAGE IA, UNLESS OTHERWISE SPECIFIED, TO BE REMOVED AT END OF THIS STAGE

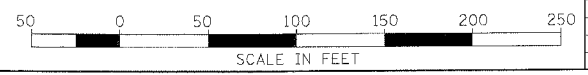
**NOTE:**  
ALL PAVEMENT MARKINGS ON THIS SHEET WILL BE PAVEMENT MARKING TAPE, TYPE III, UNLESS OTHERWISE NOTED. MOT-55

REVISIONS	
NAME	DATE

ILLINOIS DEPARTMENT OF TRANSPORTATION  
**F.A.I. 94/90 (DAN RYAN EXPRESSWAY)**  
 SB DAN RYAN ELEVATED BRIDGE  
 REPAIR FROM 15TH TO 28TH STREETS  
 MAINTENANCE OF TRAFFIC PLAN - STAGE II  
 STA. 149+39 TO STA. 161+39

SCALE: 1" = 50'  
 DATE: 5/12/2006  
 DRAWN BY: RA  
 CHECKED BY: RS

BOWMAN, BARRETT & ASSOCIATES INC.  
 CONSULTING ENGINEERS  
 Chicago, Illinois  
 312.228.0100  
 www.bbainc.com



I-94/90 DAN RYAN BRIDGE MAINTENANCE OF TRAFFIC PLAN SHEETS 660-2140102-07  
 5/12/2006