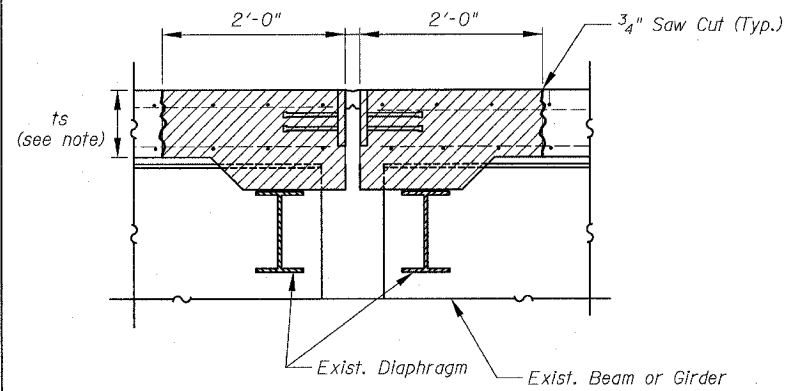


F.A.I.	SECTION	COUNTY	TOTAL SHEETS	SHEET NO.
94/90	2003-029I	COOK	344	194
STA.	TO STA.			
FED. ROAD DIST. NO.	ILLINOIS	FED. AID PROJECT		

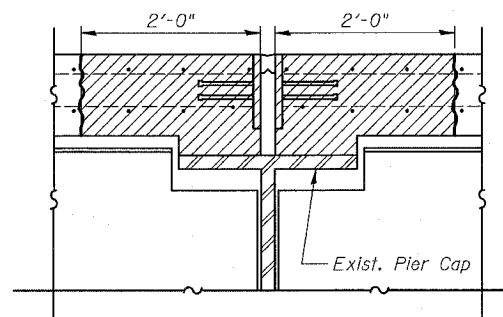
62581

**EXISTING PREFORMED JOINT SEALS**

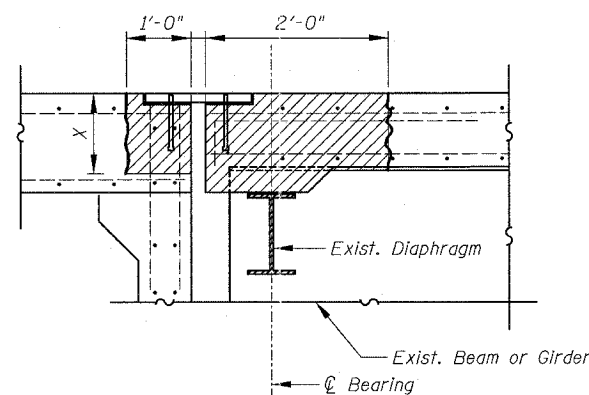
**EXISTING NEOPRENE EXPANSION JOINTS**



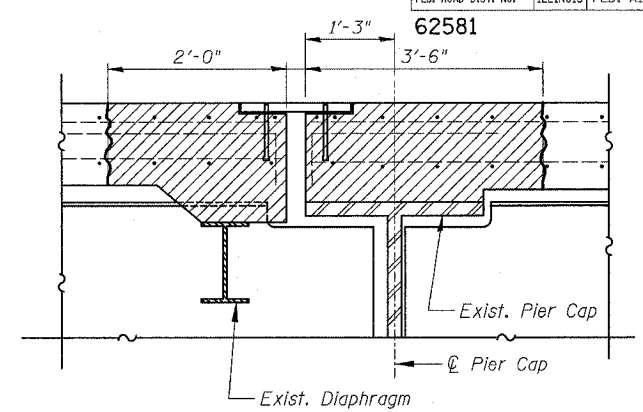
① SECTION AT PIER



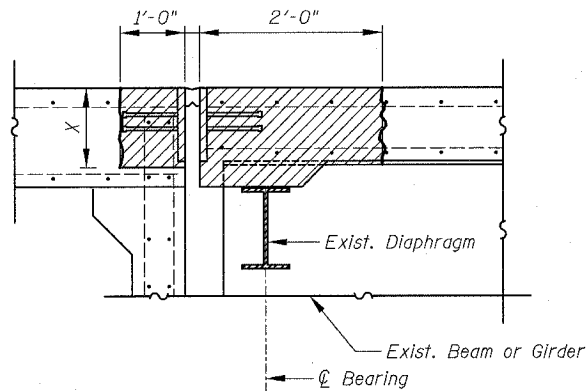
④a SECTION AT STEEL PIER CAP



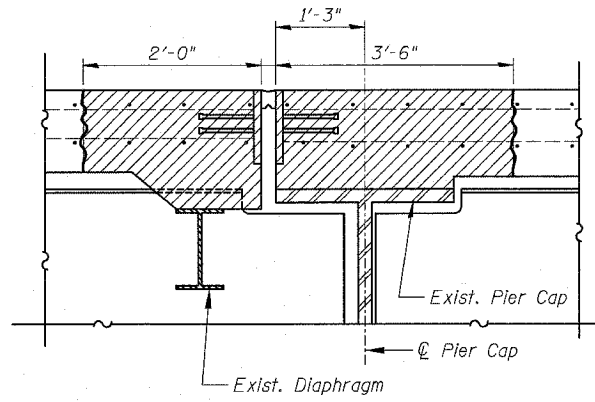
②b SECTION AT ABUTMENT



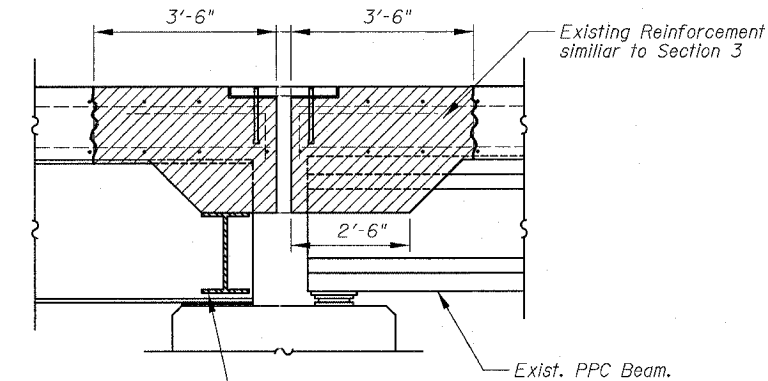
⑦ SECTION AT STEEL PIER CAP



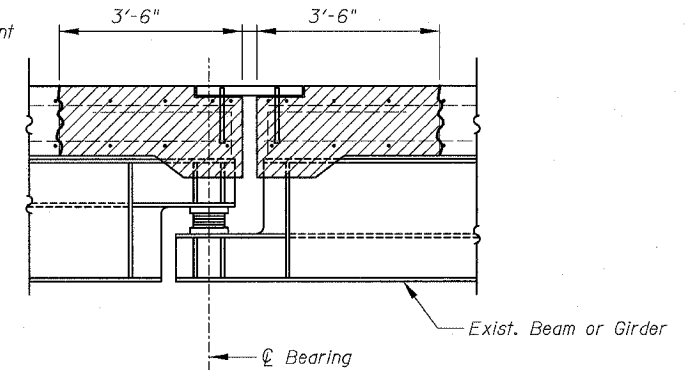
②a SECTION AT ABUTMENT



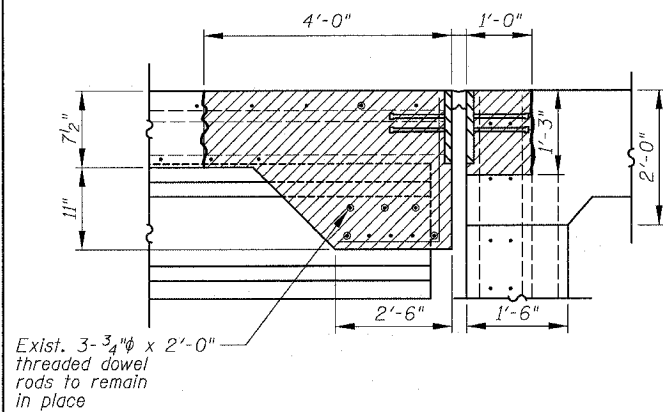
④b SECTION AT STEEL PIER CAP



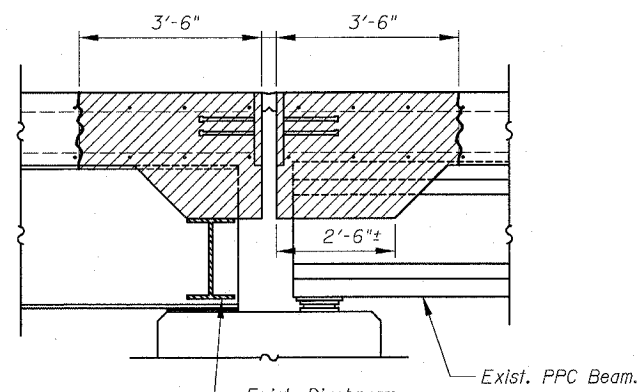
⑤b SECTION AT PIER



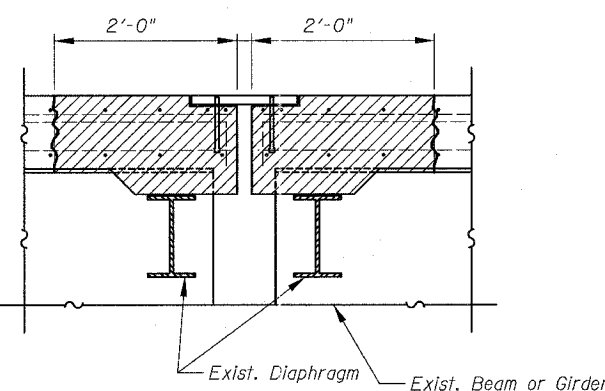
⑨ SECTION AT SUSPENDED SPAN



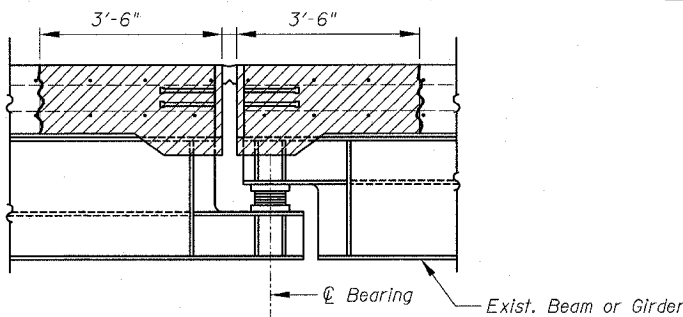
③ SECTION AT ABUTMENT



⑤a SECTION AT PIER



⑥ SECTION AT PIER



⑧ SECTION AT SUSPENDED SPAN

**Notes:**

See Structural General Notes for further clarification of 3/4" saw cut.

See table "Location & Designation of Joints" on sheets 192 and 193 for location and designation of joints.

Existing reinforcement extending into removal areas shall be cleaned, straightened and incorporated into the new construction. Cost is included with "Concrete Removal".

Removal of the existing neoprene and preformed joints, including joint seals, steel plates and anchorage hardware shall be included in the cost of "Concrete Removal".

Extreme care shall be taken not to damage the existing beams or diaphragms during concrete removal. Damage will require repair at the Contractor's expense.

For the exact thickness of the slab per span per structure refer to the existing plans dated August 1988.

Any reinforcement bars that are damaged during concrete removal operations shall be repaired or replaced using an approved bar splicer or anchorage system at no additional cost to the Department.

All dimensions shown are at right angle to the ∅ of the Piers or Abutments.

For 'X' dimension see sheet 195.

**LEGEND**

Concrete Removal

⑧ Joint Designator

ts Thickness of Slab

BOWMAN, BARRETT & ASSOCIATES INC.  
CONSULTING ENGINEERS  
Chicago, Illinois  
312.228.0100  
www.bbandainc.com



REVISIONS NAME	DATE

ILLINOIS DEPARTMENT OF TRANSPORTATION  
F.A.I. 94/90 (DAN RYAN EXPRESSWAY)  
SB DAN RYAN ELEVATED BRIDGE  
REPAIR FROM 15TH TO 28TH STREETS  
TYPICAL SECTIONS (DESIGNATION 1)  
EXISTING JOINTS

SCALE: NTS  
DATE: 5/25/2006

DRAWN BY: BDC  
CHECKED BY: BLU

F:\62581\BRIDGE\DESIGN\SHEETS\62581\_194.dwg 5/25/2006 7:59:41 PM