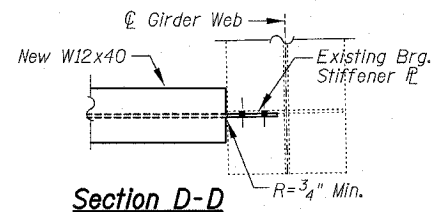


F.A.I.	SECTION	COUNTY	TOTAL SHEETS	SHEET NO.
94/90	2003-029I	COOK	344	262
STA.		TO STA.		
FED. ROAD DIST. NO.	ILLINOIS	FED. AID PROJECT		

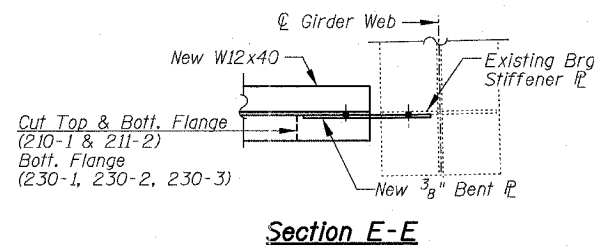
62581



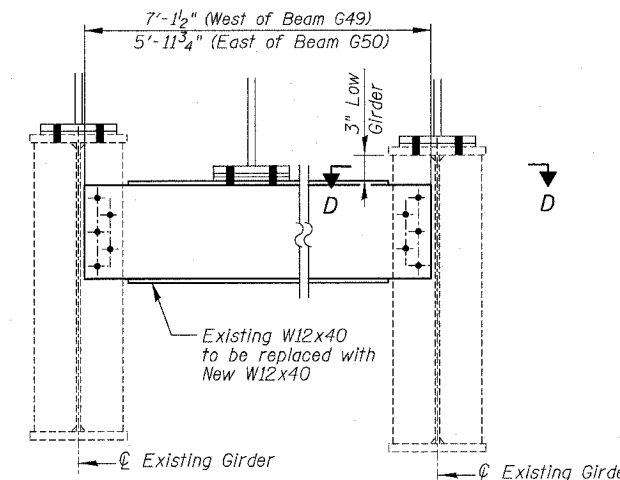
Section D-D

NOTES:

1. Use 7/8" φ H.S. bolts for all cross frame/diaphragm connections at this pier location (excluding stool connections).
2. Field drill 15/16" φ holes for 7/8" φ bolts. Use 2" min. edge distance for all 7/8" φ bolts unless otherwise noted.
3. Calculated weight of Structural Steel used for the item "Furnishing & Erecting Structural Steel" = 7,980 Lbs.
4. E.S. denotes East Side. W.S. indicates West Side.

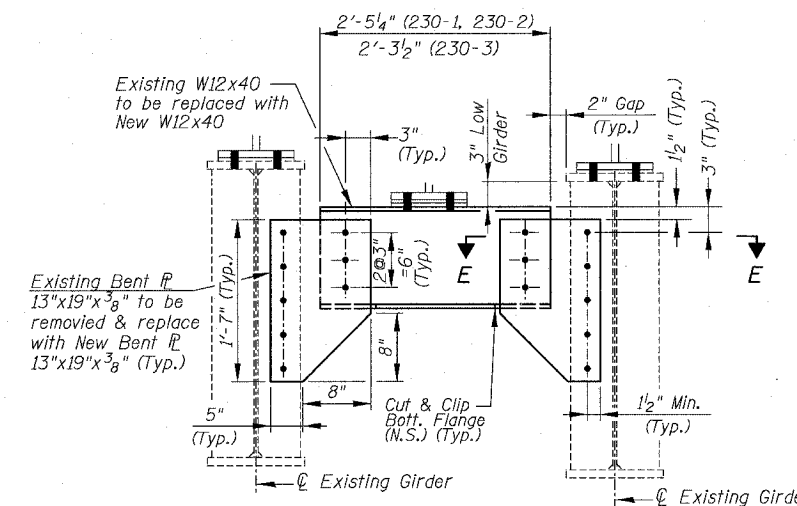


Section E-E



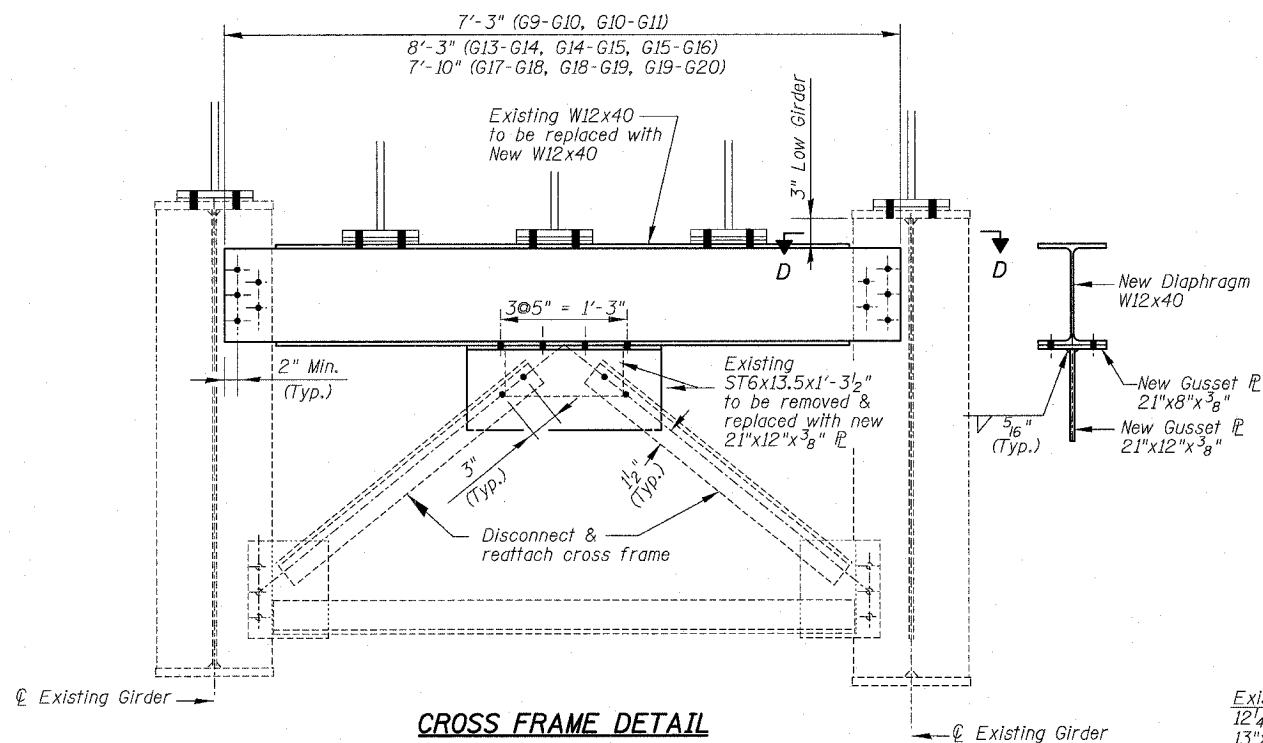
DIAPHRAGM DETAIL

S.N. 016-1110 (DEJ)	
DEJ	11 REQ'D



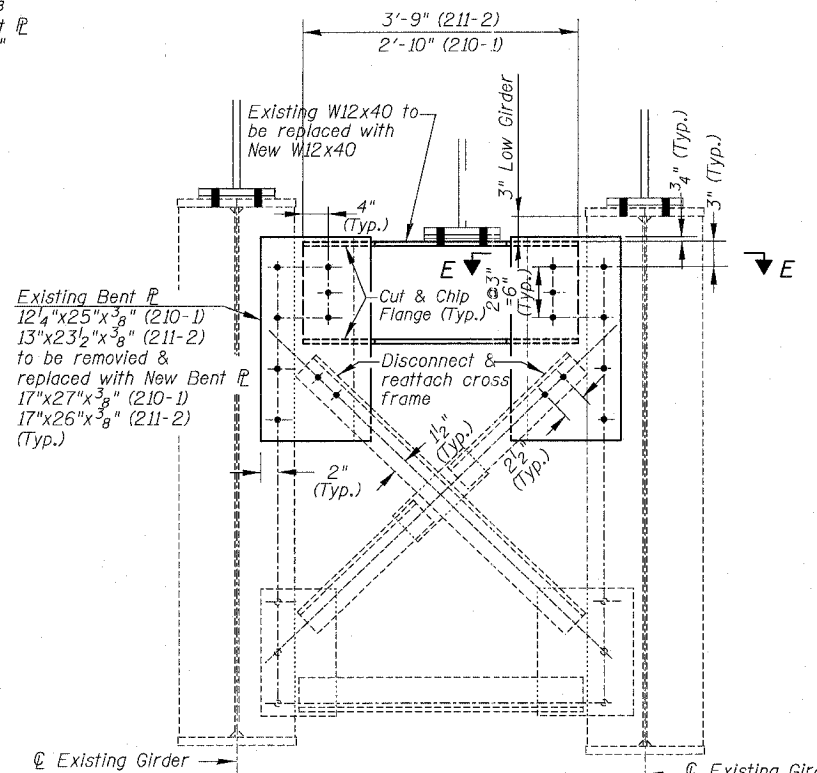
DIAPHRAGM DETAIL

S.N. 016-1110	
230-1	1 REQ'D
230-2	1 REQ'D
230-3	1 REQ'D



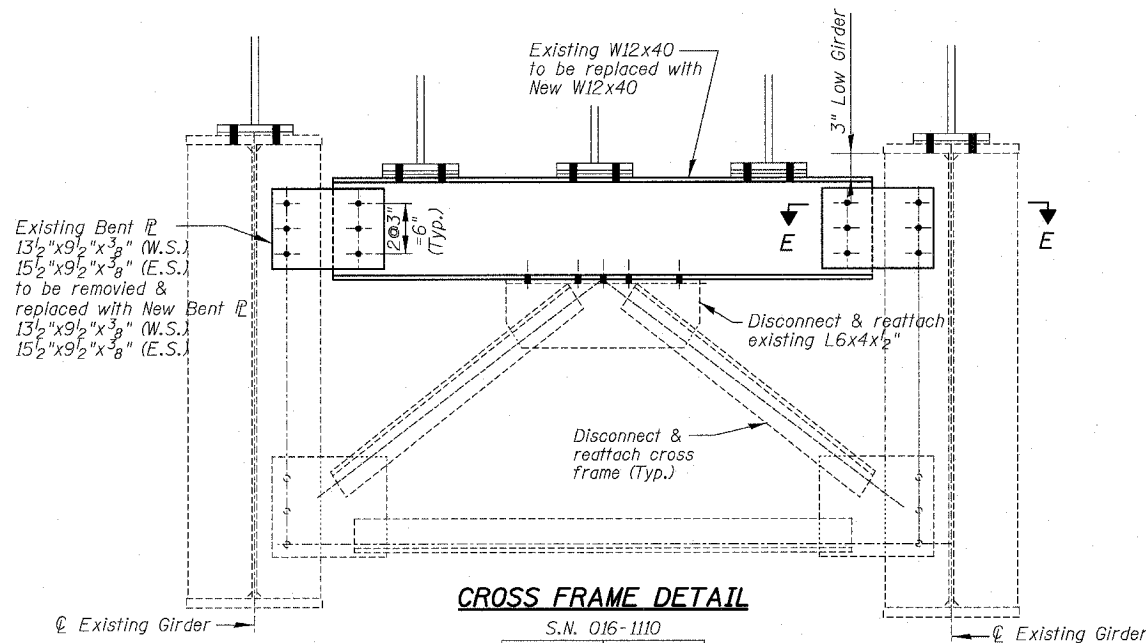
CROSS FRAME DETAIL

S.N. 016-1110	
ECF	8 REQ'D



CROSS FRAME DETAIL

S.N. 016-1110	
210-1	1 REQ'D
211-2	1 REQ'D



CROSS FRAME DETAIL

S.N. 016-1110	
203-1	1 REQ'D

BILL OF MATERIAL

Item	Unit	Quantity
Furnishing & Erecting Structural Steel	Lum Sum	0.03
Structural Steel Removal	Pound	7,660

REVISIONS		ILLINOIS DEPARTMENT OF TRANSPORTATION F.A.I. 94/90 (DAN RYAN EXPRESSWAY) SB DAN RYAN ELEVATED BRIDGE REPAIR FROM 15TH TO 28TH STREETS DIAPHRAGM REPLACEMENT PIER 4, SN 016-1110
NAME	DATE	
		SCALE: NTS
		DATE: 5/25/2006
		DRAWN BY: MTR
		CHECKED BY: BLU

BOWMAN, BARRETT & ASSOCIATES INC.
CONSULTING ENGINEERS
Chicago, Illinois
312.228.0100
www.bbainc.com

1660-DAN-RYAN-BRIDGE-DIAPHRAGM-SHEETS-9402-2106-1106-FR-110409

4-3834-FM
5/25/2006