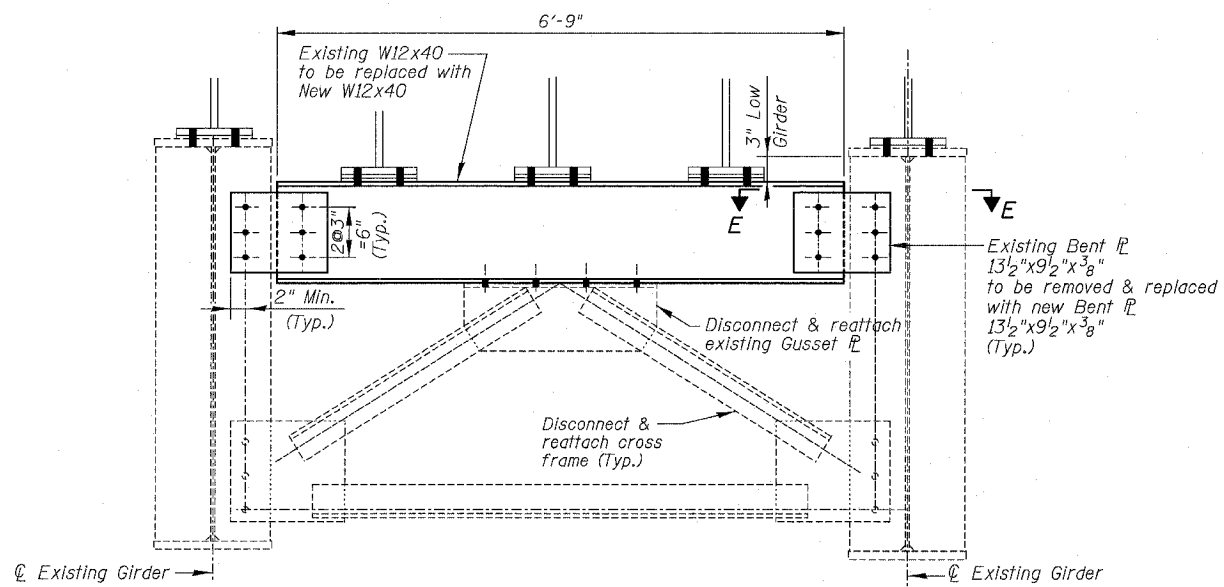
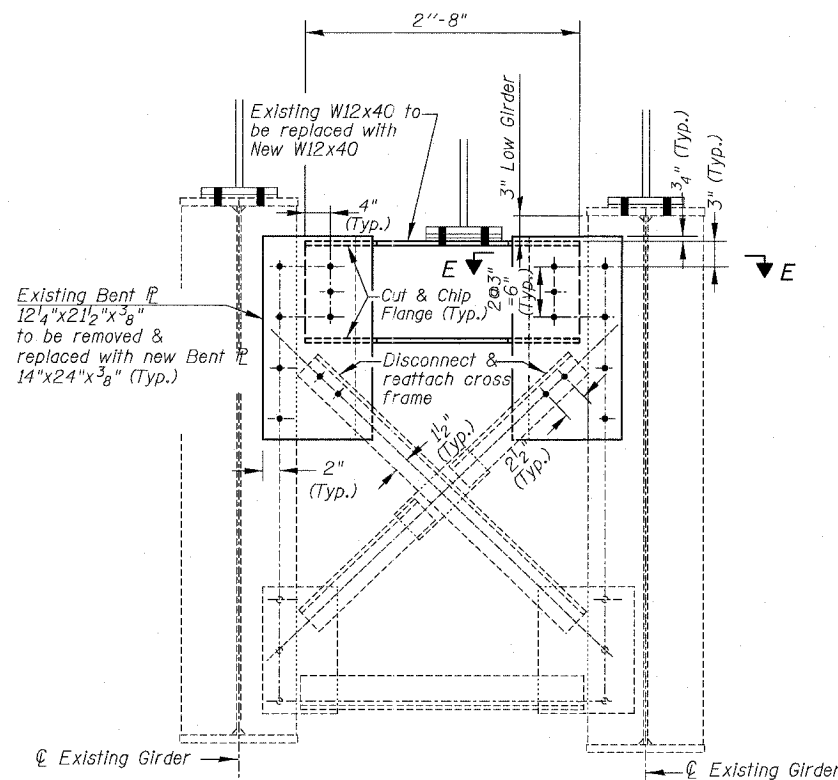
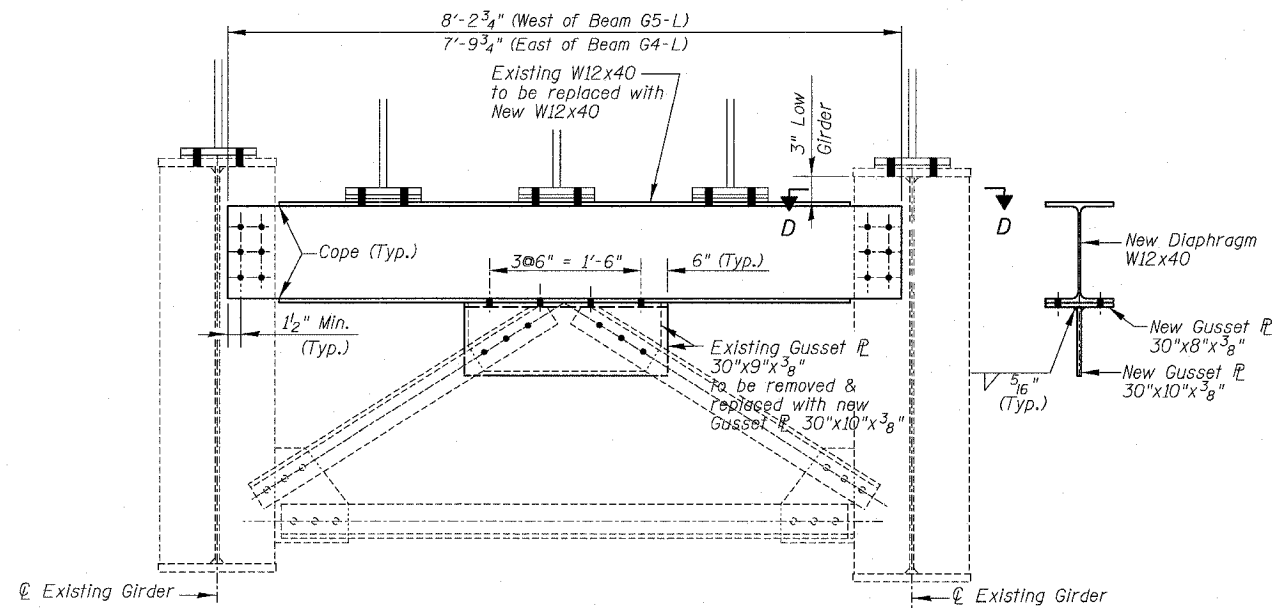
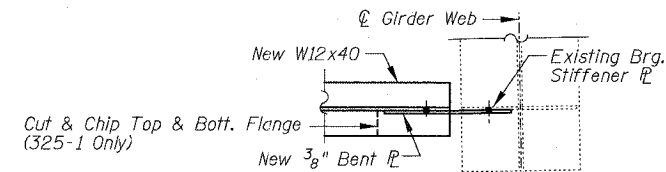
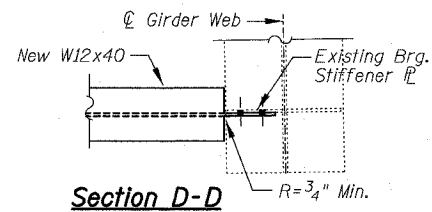


F.A.I.	SECTION	COUNTY	TOTAL SHEETS	SHEET NO.
94/90	2003-0291	COOK	344	266
STA.		TO STA.		
FED. ROAD DIST. NO.	ILLINOIS	FED. AID PROJECT		
62581				



NOTES:

1. Use 7/8" H.S. bolts for all cross frame/diaphragm connections at this pier location (excluding stool connections).
2. Field drill 15/16" holes for 7/8" bolts. Use 2" min. edge distance for all 7/8" bolts unless otherwise noted.
3. Calculated weight of Structural Steel used for the item "Furnishing & Erecting Structural Steel" = 6,360 Lbs.

BILL OF MATERIAL

Item	Unit	Quantity
Furnishing & Erecting Structural Steel	Lum Sum	0.03
Structural Steel Removal	Pound	5,880

REVISIONS	DATE
NAME	

ILLINOIS DEPARTMENT OF TRANSPORTATION
 F.A.I. 94/90 (DAN RYAN EXPRESSWAY)
 SB DAN RYAN ELEVATED BRIDGE
 REPAIR FROM 15TH TO 28TH STREETS
 DIAPHRAGM REPLACEMENT
 PIER 7, SN 016-1111
 SCALE: NTS
 DATE: 5/25/2006
 DRAWN BY: BDC
 CHECKED BY: IYL

BOWMAN, BARRETT & ASSOCIATES INC.
 CONSULTING ENGINEERS
 Chicago, Illinois
 312.228.0100
 www.bbainc.com

I:\650\0000\BRIDGE\SN016\1111\FR.DWG 4/4/04 PM 5/25/2006