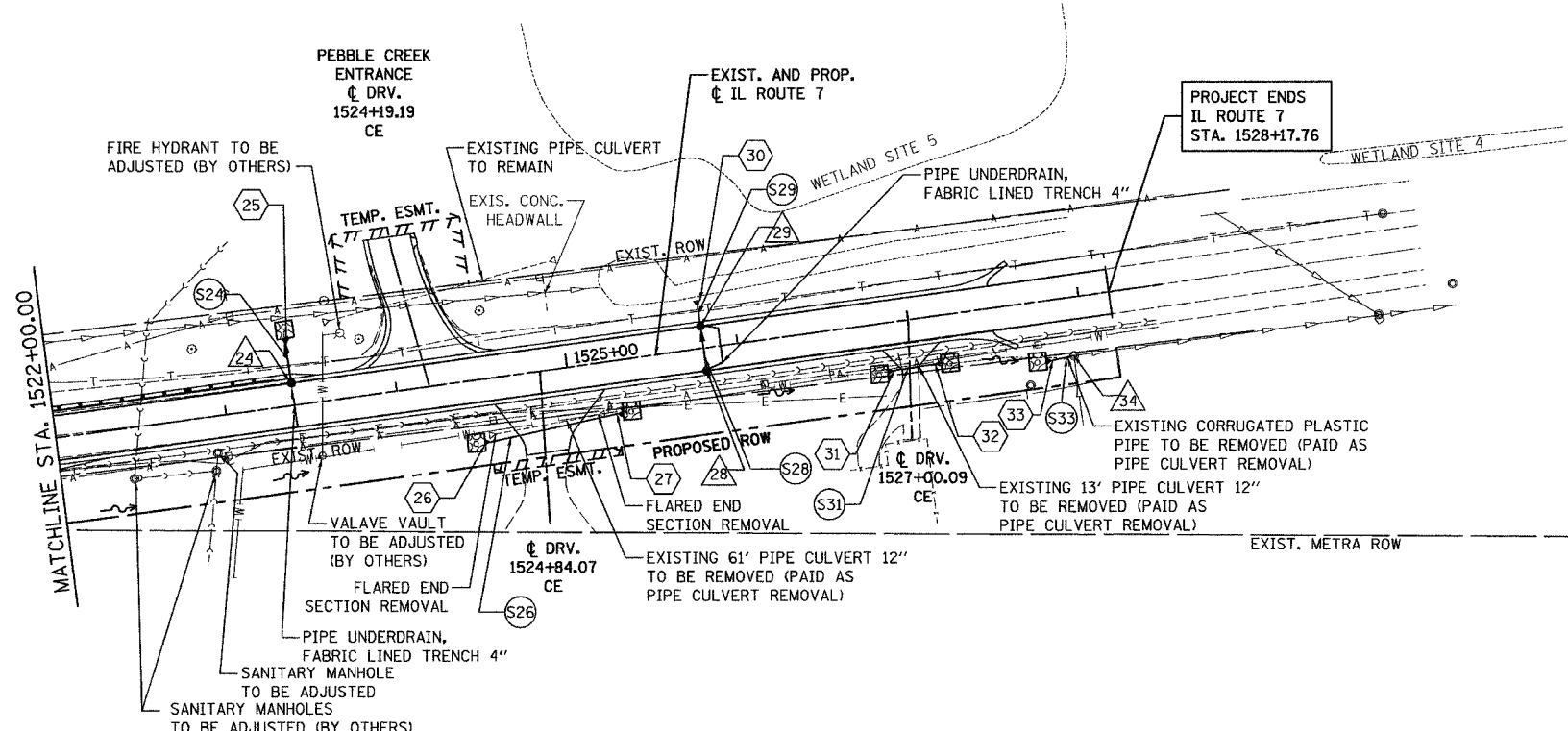


F.A.U. RTE.	SECTION	COUNTY	TOTAL SHEETS	SHEET NO.
3578	1327B	COOK	108	21
STA. 1522+00.00 TO STA. 1528+17.76				
FED. ROAD DIST. NO. 1 ILLINOIS FED. AID PROJECT				

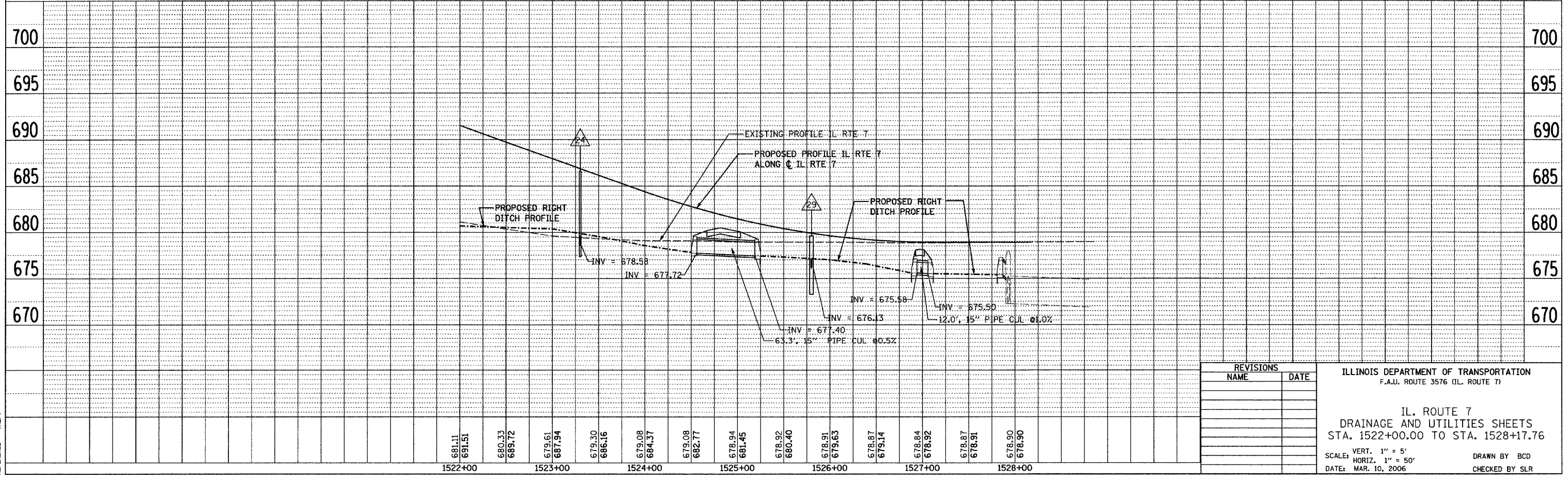
DATE	
BY	
APPROVED	
PLANNED	
NOTED	
REVIEWED	
DATE	
BY	
APPROVED	
PLANNED	
NOTED	
REVIEWED	
DATE	
BY	
APPROVED	
PLANNED	
NOTED	
REVIEWED	
DATE	
BY	
APPROVED	
PLANNED	
NOTED	
REVIEWED	
DATE	
BY	
APPROVED	
PLANNED	
NOTED	
REVIEWED	
DATE	
BY	
APPROVED	
PLANNED	
NOTED	
REVIEWED	
DATE	
BY	
APPROVED	
PLANNED	
NOTED	
REVIEWED	
DATE	
BY	
APPROVED	
PLANNED	
NOTED	
REVIEWED	



- LEGEND:**
- (X) PROPOSED STRUCTURE
 - (SX) PROPOSED PIPE
 - (X) PROPOSED FLARED END SECTION

- NOTE:**
- FOR STRUCTURE AND PIPE TABLES SEE DRAINAGE TABLE SHEET
 - IF THE STORM SEWER SYSTEM BETWEEN STA. 1508+00 AND STA. 1515+00 WILL BE INSTALLED PRIOR TO THE FILL PLACEMENT, THEN THE SEWER LATERALS ARE TO BE INSTALLED AFTER THE SETTLEMENT WAITING PERIOD IS COMPLETED, AS DIRECTED BY THE ENGINEER.

DATE	
BY	
APPROVED	
PLANNED	
NOTED	
REVIEWED	
DATE	
BY	
APPROVED	
PLANNED	
NOTED	
REVIEWED	
DATE	
BY	
APPROVED	
PLANNED	
NOTED	
REVIEWED	
DATE	
BY	
APPROVED	
PLANNED	
NOTED	
REVIEWED	
DATE	
BY	
APPROVED	
PLANNED	
NOTED	
REVIEWED	



PLOT DATE = 3/10/2006
 FILE NAME = W:\11\7\Proposed\Plan\Plan\Prof\Jua\DR.dgn
 PLOT SCALE = 1"=50'
 REFERENCE = BREF

REVISIONS	
NAME	DATE

ILLINOIS DEPARTMENT OF TRANSPORTATION
 F.A.U. ROUTE 3576 (IL. ROUTE 7)

IL. ROUTE 7
 DRAINAGE AND UTILITIES SHEETS
 STA. 1522+00.00 TO STA. 1528+17.76

SCALE: VERT. 1" = 5'
 HORIZ. 1" = 50'
 DATE: MAR. 10, 2006

DRAWN BY BCD
 CHECKED BY SLR