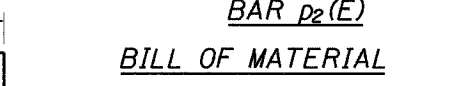
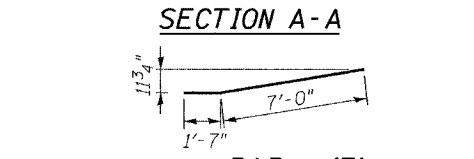
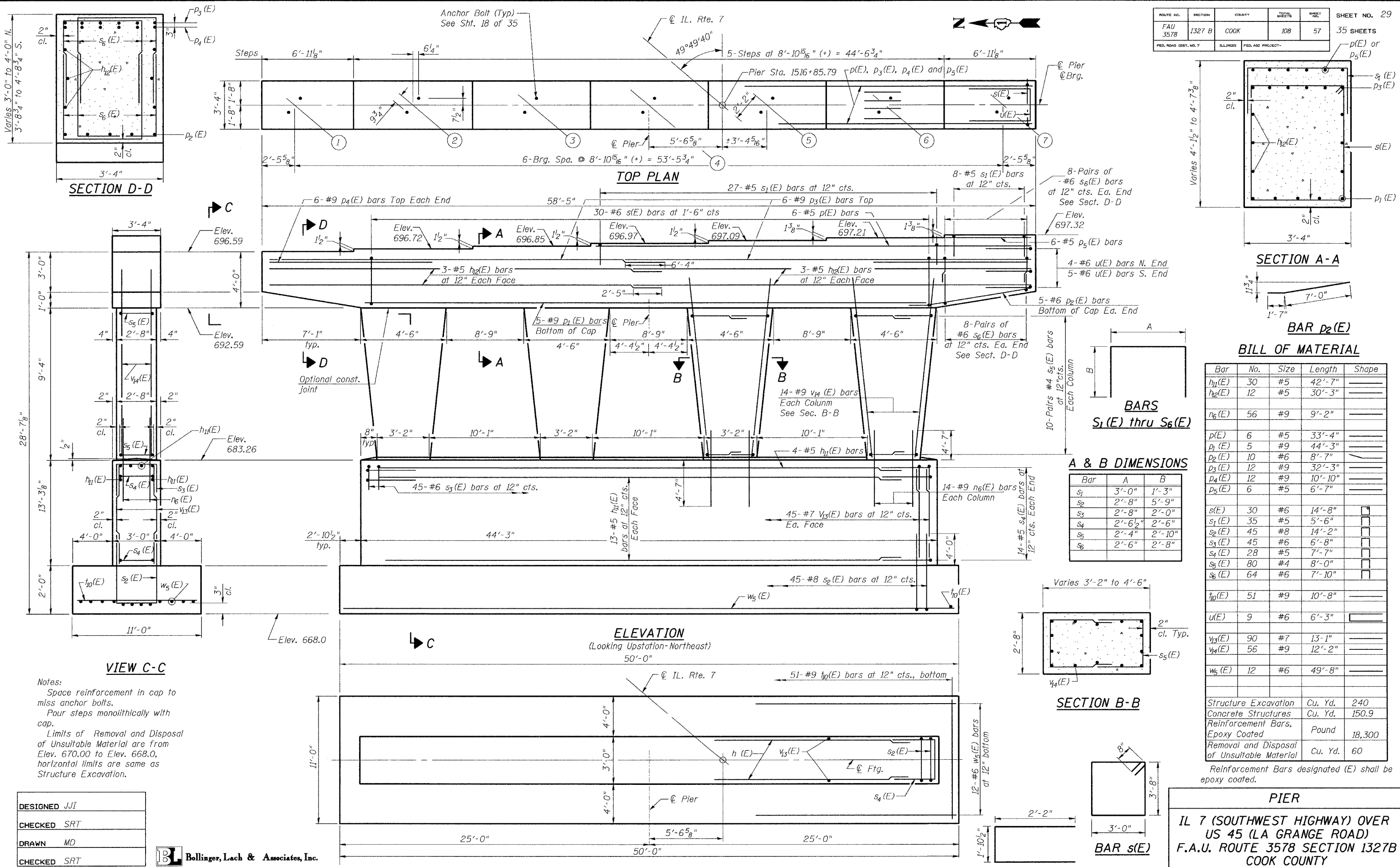


ROUTE NO. FAU 3578	SECTION 1327 B	COUNTY COOK	TOTAL SHEETS 108	SHEET NO. 57	SHEET NO. 29
FED. ROAD DIST. NO. 7					ILLINOIS
FED. AID PROJECT-					35 SHEETS

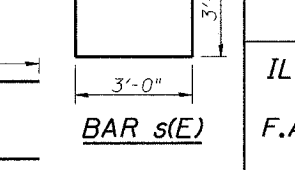
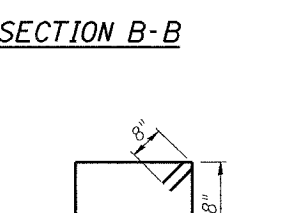
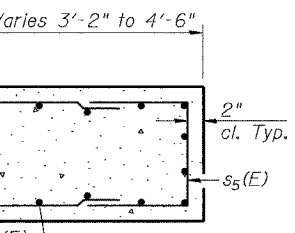


BILL OF MATERIAL

Bar	No.	Size	Length	Shape
h1(E)	30	#5	42'-7"	
h2(E)	12	#5	30'-3"	
n6(E)	56	#9	9'-2"	
p(E)	6	#5	33'-4"	
p1(E)	5	#9	44'-3"	
p2(E)	10	#6	8'-7"	
p3(E)	12	#9	32'-3"	
p4(E)	12	#9	10'-10"	
p5(E)	6	#5	6'-7"	
s(E)	30	#6	14'-8"	
s1(E)	35	#5	5'-6"	
s2(E)	45	#8	14'-2"	
s3(E)	45	#6	6'-8"	
s4(E)	28	#5	7'-7"	
s5(E)	80	#4	8'-0"	
s6(E)	64	#6	7'-10"	
v10(E)	51	#9	10'-8"	
u(E)	9	#6	6'-3"	
v13(E)	90	#7	13'-1"	
v14(E)	56	#9	12'-2"	
w5(E)	12	#6	49'-8"	

A & B DIMENSIONS

Bar	A	B
s1	3'-0"	1'-3"
s2	2'-8"	5'-9"
s3	2'-8"	2'-0"
s4	2'-6 1/2"	2'-6"
s5	2'-4"	2'-10"
s6	2'-6"	2'-8"



Structure Excavation	Cu. Yd.	240
Concrete Structures	Cu. Yd.	150.9
Reinforcement Bars, Epoxy Coated	Pound	18,300
Removal and Disposal of Unsuitable Material	Cu. Yd.	60

Reinforcement Bars designated (E) shall be epoxy coated.

PIER
 IL 7 (SOUTHWEST HIGHWAY) OVER
 US 45 (LA GRANGE ROAD)
 F.A.U. ROUTE 3578 SECTION 1327B
 COOK COUNTY
 STA. 1516+85.79
 STRUCTURE NUMBER 016-2847

Notes:
 Space reinforcement in cap to miss anchor bolts.
 Pour steps monolithically with cap.
 Limits of Removal and Disposal of Unsuitable Material are from Elev. 670.00 to Elev. 668.0, horizontal limits are same as Structure Excavation.

DESIGNED	JJI
CHECKED	SRT
DRAWN	MD
CHECKED	SRT

Bollinger, Lach & Associates, Inc.

P-6 10-22-04

Maximum Applied Soil Bearing Pressure = 5,100 psf

FOOTING PLAN