

*REF-100014
*REF-p10014

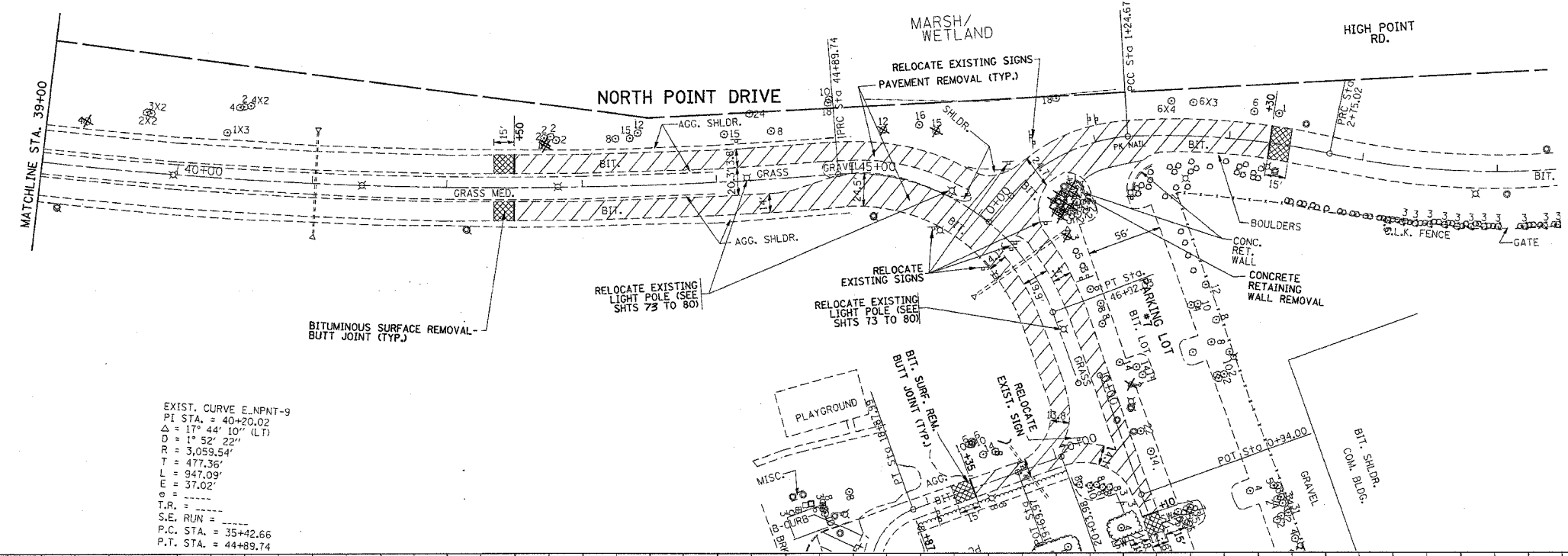
EXIST. CURVE E.NPNT-10
PI STA. = 46+07.61
Δ = 73° 42' 28" (RT)
D = 36° 26' 12"
R = 157.25'
T = 117.87'
L = 202.29'
E = 39.27'
S.E. RUN = ---
P.C. STA. = 44+89.74
P.T. STA. = 46+92.03

EXIST. CURVE E.HIGH-1
PI STA. = 0+77.64
Δ = 45° 37' 31" (RT)
D = 45° 46' 31"
R = 125.17'
T = 52.65'
L = 99.67'
E = 10.62'
S.E. RUN = 0+24.99
P.C. STA. = 1+24.67
P.T. STA. = 1+24.67

EXIST. CURVE E.HIGH-2
PI STA. = 2+00.26
Δ = 14° 42' 29" (RT)
D = 9° 46' 57"
R = 585.70'
T = 75.59'
L = 150.35'
E = 4.86'
S.E. RUN = ---
P.C. STA. = 1+24.67
P.T. STA. = 2+75.02

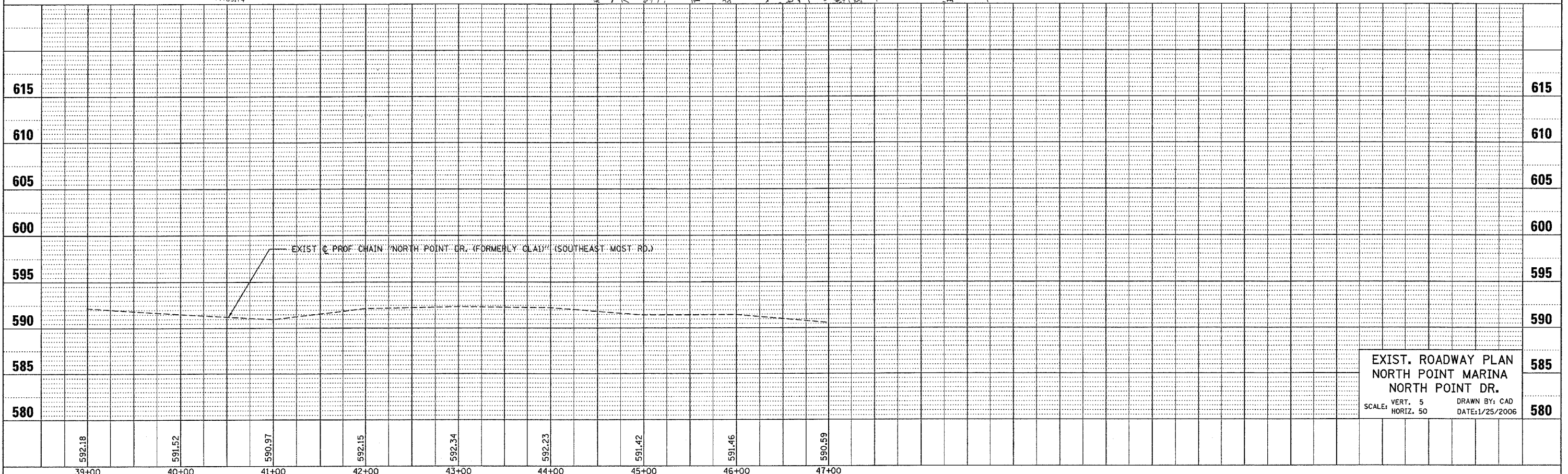
F.A. RTE.	SECTION	COUNTY	TOTAL SHEETS	SHEET NO.
*	2004-025 RS	LAKE	116	29
STA.		TO STA.		
FED. ROAD DIST. NO.		ILLINOIS	FED. AID PROJECT	
* PARK ROADS		CONTRACT NO. 62745		
IDNR FILE NO. 2-03-025				

PLAN	DATE	BY
SURVEYED		
PLOTTED		
CHECKED		
NOTE BOOK NO.		
FILE NAME		



EXIST. CURVE E.NPNT-9
PI STA. = 40+20.02
Δ = 17° 44' 10" (LT)
D = 1° 52' 22"
R = 3,059.54'
T = 477.36'
L = 947.09'
E = 37.02'
S.E. RUN = ---
P.C. STA. = 35+42.66
P.T. STA. = 44+89.74

PROFILE	DATE	BY
SURVEYED		
PLOTTED		
CHECKED		
NOTE BOOK NO.		
STRUCTURE NOTATIONS		



EXIST. ROADWAY PLAN
NORTH POINT MARINA
NORTH POINT DR.
SCALE: VERT. 5
HORIZ. 50
DRAWN BY: CAD
DATE: 1/25/2006