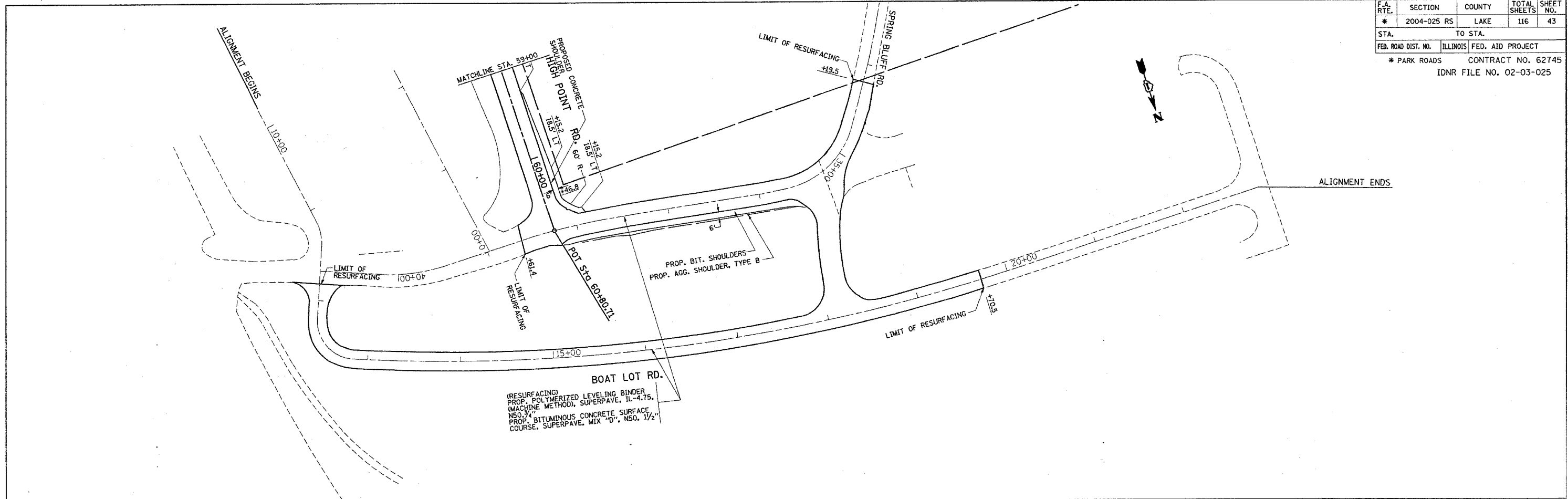
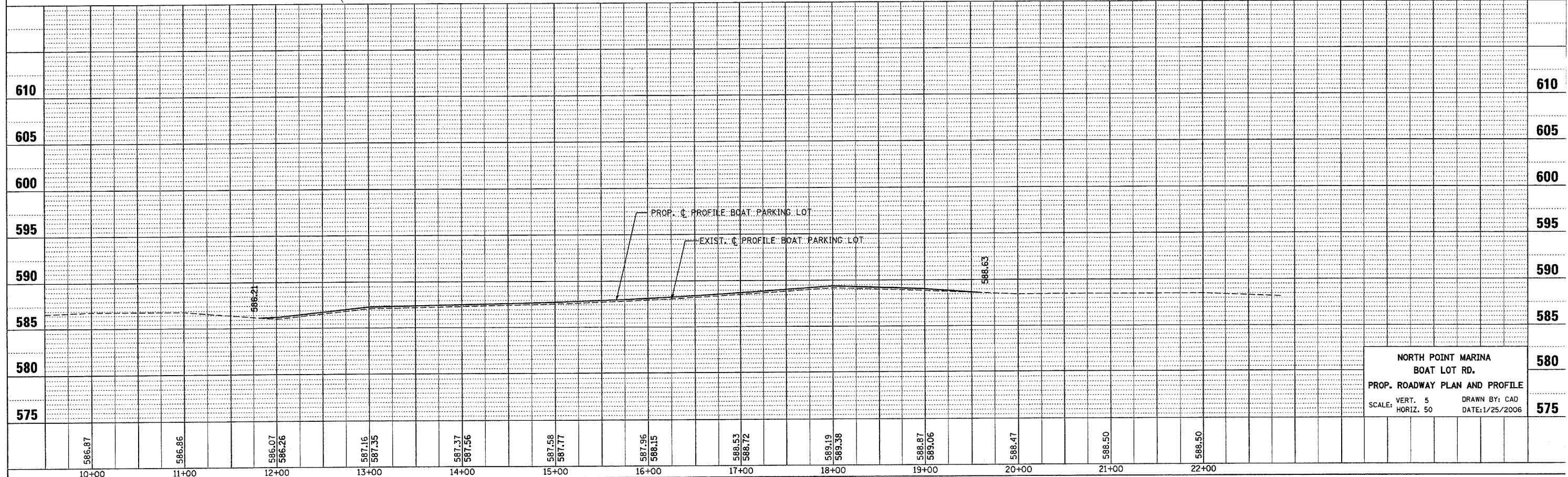


\*REF-topbitol  
\*REF-prbitol

F.A. RTE.	SECTION	COUNTY	TOTAL SHEETS	SHEET NO.
*	2004-025 RS	LAKE	116	43
STA.		TO STA.		
FED. ROAD DIST. NO.	ILLINOIS FED. AID PROJECT			
* PARK ROADS		CONTRACT NO. 62745		
		IDNR FILE NO. 02-03-025		



(RESURFACING)  
PROP. POLYMERIZED LEVELING BINDER  
PROP. BITUMINOUS CONCRETE SURFACE  
COURSE, SUPERPAVE, MIX "D", NSO, 1 1/2"



NORTH POINT MARINA  
BOAT LOT RD.  
PROP. ROADWAY PLAN AND PROFILE  
SCALE: VERT. 5  
HORIZ. 50  
DRAWN BY: CAD  
DATE: 1/25/2006