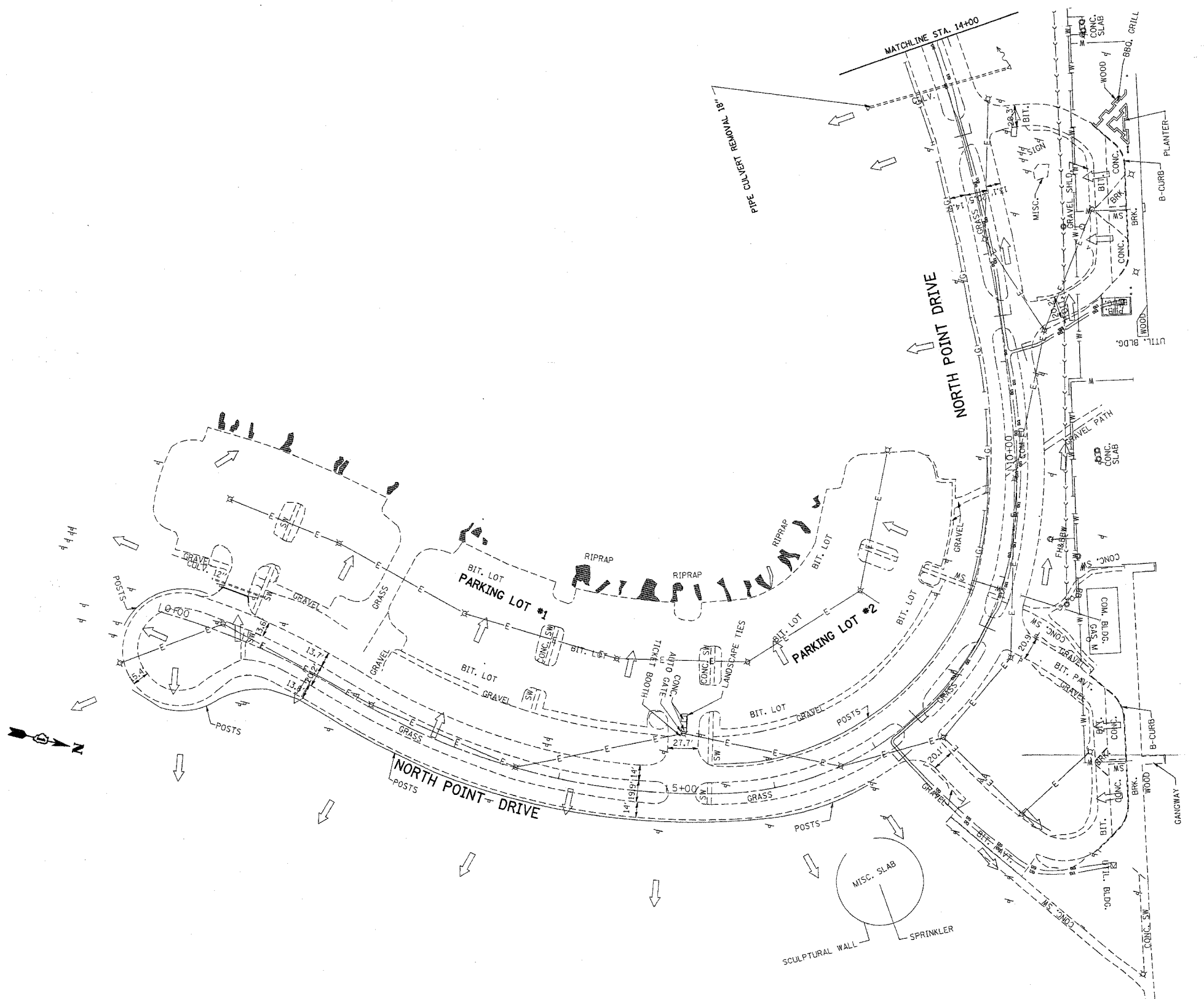


F.A. RTE.	SECTION	COUNTY	TOTAL SHEETS	SHEET NO.
*	2004-025-RS	LAKE	116	51
STA.	TO STA.			
FED. ROAD DIST. NO.	ILLINOIS FED. AID PROJECT			
* PARK ROADS		CONTRACT NO. 62745		
IDNR FILE NO. 2-03-025				



T = TELEPHONE  
 W = WATER  
 E = PRIVATE PARK ELECTRICAL  
 UG = COMMONWEALTH EDISON  
 G = GAS

REVISIONS	
NAME	DATE

ILLINOIS DEPARTMENT OF TRANSPORTATION

**NORTH POINT MARINA**  
**NORTH POINT DRIVE**  
**EXISTING UTILITY & DRAINAGE PLAN**

SCALE: VERT. 1"=50'  
 SCALE: HORIZ. 1"=50'  
 DATE: 3/6/2006

DRAWN BY \_\_\_\_\_  
 CHECKED BY \_\_\_\_\_

PLOT DATE = 3/6/2006  
 FILE NAME = c:\parks\mesta\p134482\sh\_dr\an.dgn  
 PLOT SCALE = 0.000000 / IN.  
 USER NAME = gwardad