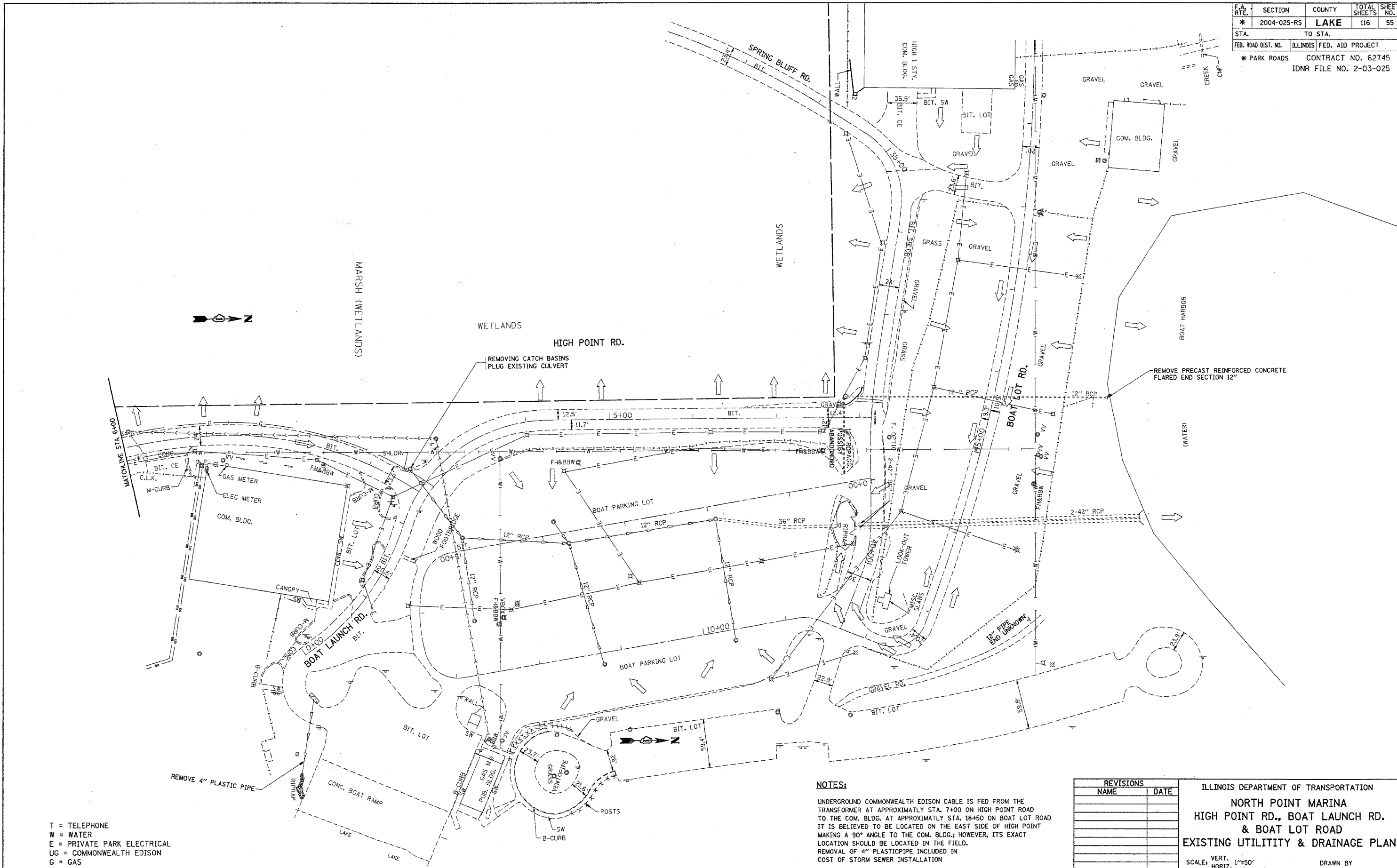


F.A. RTE.	SECTION	COUNTY	TOTAL SHEETS	SHEET NO.
* 2004-025-RS	LAKE	ILLINOIS	116	55
STA.	TO STA.			
FED. ROAD DIST. NO.	ILLINOIS FED. AID PROJECT			
* PARK ROADS	CONTRACT NO. 62745			
	IDNR FILE NO. 2-03-025			



T = TELEPHONE
W = WATER
E = PRIVATE PARK ELECTRICAL
UG = COMMONWEALTH EDISON
G = GAS

NOTES:
UNDERGROUND COMMONWEALTH EDISON CABLE IS FED FROM THE TRANSFORMER AT APPROXIMATELY STA. 7+00 ON HIGH POINT ROAD TO THE COM. BLDG. AT APPROXIMATELY STA. 18+50 ON BOAT LOT ROAD IT IS BELIEVED TO BE LOCATED ON THE EAST SIDE OF HIGH POINT MAKING A 90° ANGLE TO THE COM. BLDG.; HOWEVER, ITS EXACT LOCATION SHOULD BE LOCATED IN THE FIELD.
REMOVAL OF 4" PLASTICPIPE INCLUDED IN COST OF STORM SEWER INSTALLATION

REVISIONS	
NAME	DATE

ILLINOIS DEPARTMENT OF TRANSPORTATION
NORTH POINT MARINA
HIGH POINT RD., BOAT LAUNCH RD.
& BOAT LOT ROAD
EXISTING UTILITY & DRAINAGE PLAN
SCALE: VERT. 1"=50'
HORIZ. 1"=50'
DATE: 3/6/2006
DRAWN BY
CHECKED BY

PLT DATE = 2/6/2006
FILE NAME = 134482.dwg
PLOT SCALE = 1/8"=1'-0"
USER NAME = jh-1044