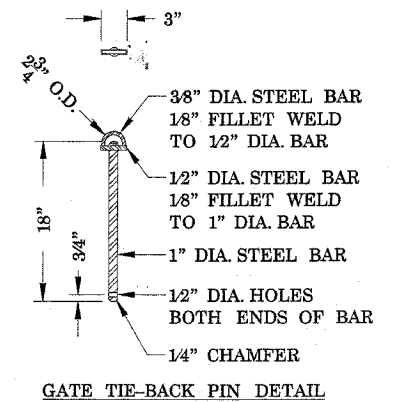
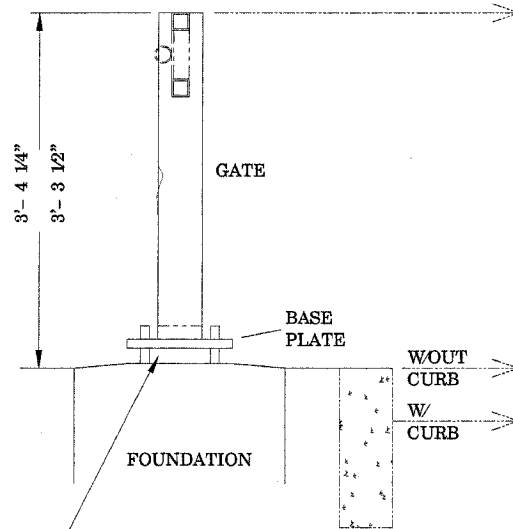


CENTER GATE LEAF BETWEEN LOCK PLATES AND TO ADJUST FOR SHOULDER SLOPE AND CURB HEIGHT (IF USED, ADD 6" +/-)

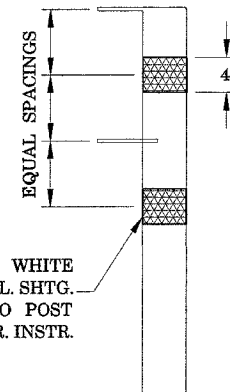
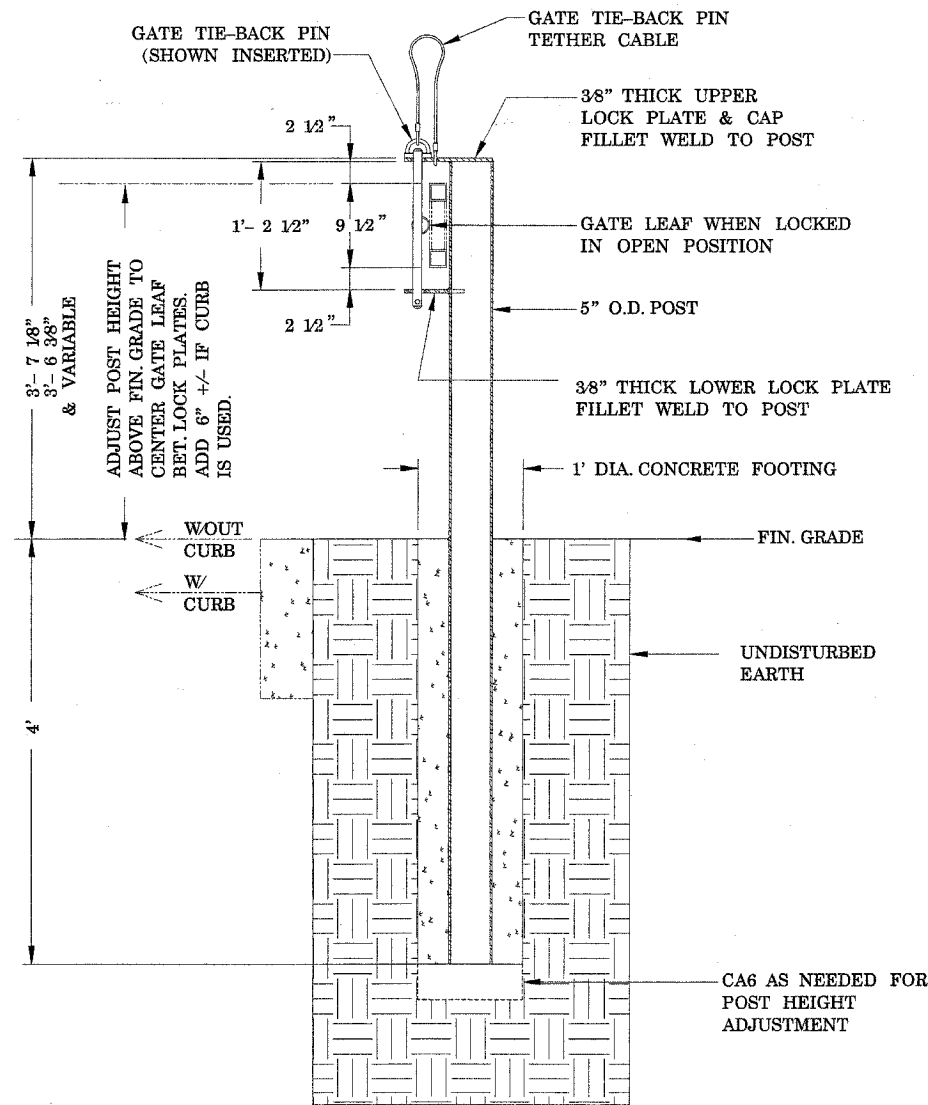


SWING GATE ASSEMBLY— SHOWN FOR REFERENCE



GAP BETWEEN BASE PLATE AND TOP OF FOUNDATION— MAX. = 1 3/4" (SHOWN); MIN. = 1".

(PER SWING GATE DETAIL DRAWING.)



RETROREFLECTIVE SHEETING DETAIL

GATE PINS— SHOWN FOR REFERENCE



TETHER CABLE, 36" LENGTH OF 1/4" DIA. 7x19 STAINLESS STEEL FLEXIBLE RIGGING WIRE FORM END LOOPS W/ZINC-PLATED COPPER SWAGE SLEEVES

TIE-BACK PIN TETHER CABLE DETAIL

SECT. A-A

GATE TIE-BACK POST DETAILS

NOTE: ALL DOUBLE SWING GATES SHALL INCLUDE TWO (2) TIE-BACK POSTS

REVISIONS	
NAME	DATE

ILLINOIS DEPARTMENT OF TRANSPORTATION
ILLINOIS BEACH STATE PARK
NORTH POINT MARINA
SWING GATE DETAIL

SCALE: NOT TO SCALE
DATE
DRAWN BY
CHECKED BY

PLOT DATE = 3/14/2006
FILE NAME = c:\pco\mets\p34482\asig\m32
PLOT NAME = 000000 / IN
USER NAME = dunnoced