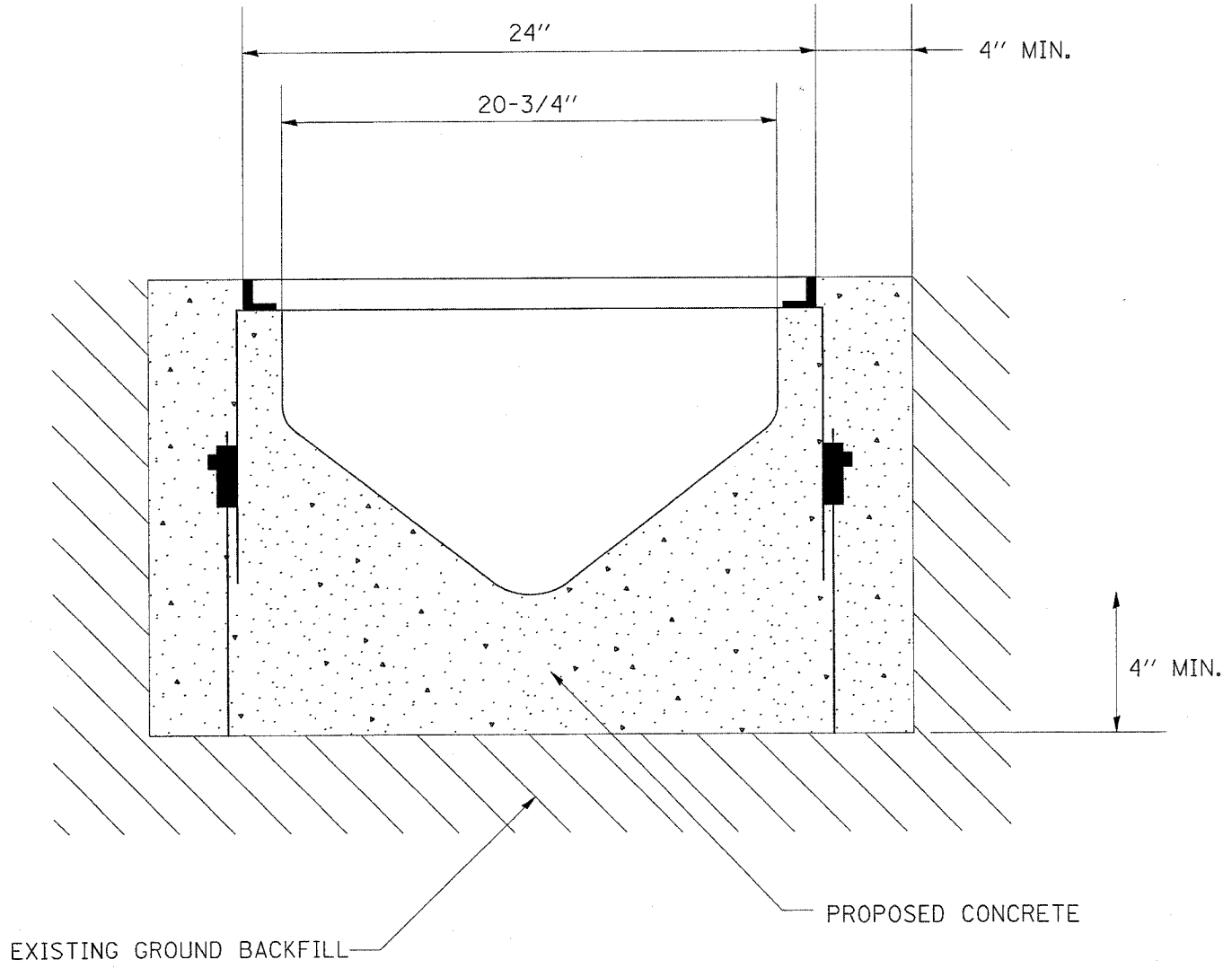


\*REF-  
\*REF-  
\*REF-

CONTRACT NO. 62745

F.A.I. RTE.	SECTION	COUNTY	TOTAL SHEETS	SHEET NO.
*	2004-025 RS	LAKE	116	92
FED. ROAD DIST. NO. 1 ILLINOIS FED. AID PROJECT				
* PARK ROADS IDNR FILE No. 2-03-025 D91-191-04				



**NOTE: A 1% SLOPE SHALL BE PROVIDED  
ALONG THE BASE OF THE PIPE.**

REVISIONS	
NAME	DATE

ILLINOIS DEPARTMENT OF TRANSPORTATION  
ILLINOIS BEACH STATE PARK  
NORTH POINT MARINA  
SLOTTED DRAIN DETAIL

SCALE: VERT.      DRAWN BY  
          HORIZ.      CHECKED BY  
DATE 1/6/2006