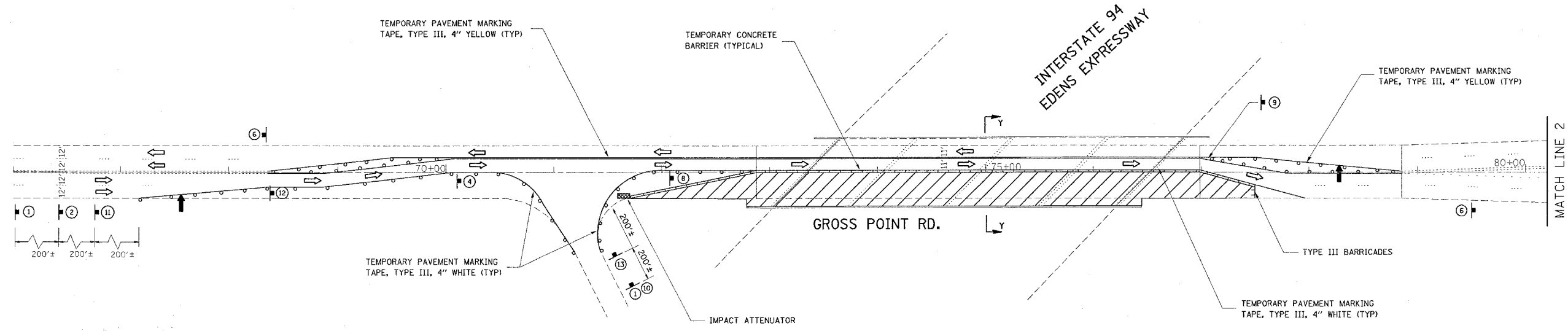


F.A.U. RTE.	SECTION	COUNTY	TOTAL SHEETS	SHEET NO.
3520	2005-001 RS	COOK	37	12
STA.		TO STA.		
FED. ROAD DIST. NO. 1		ILLINOIS FED. AID PROJECT		



STAGE II

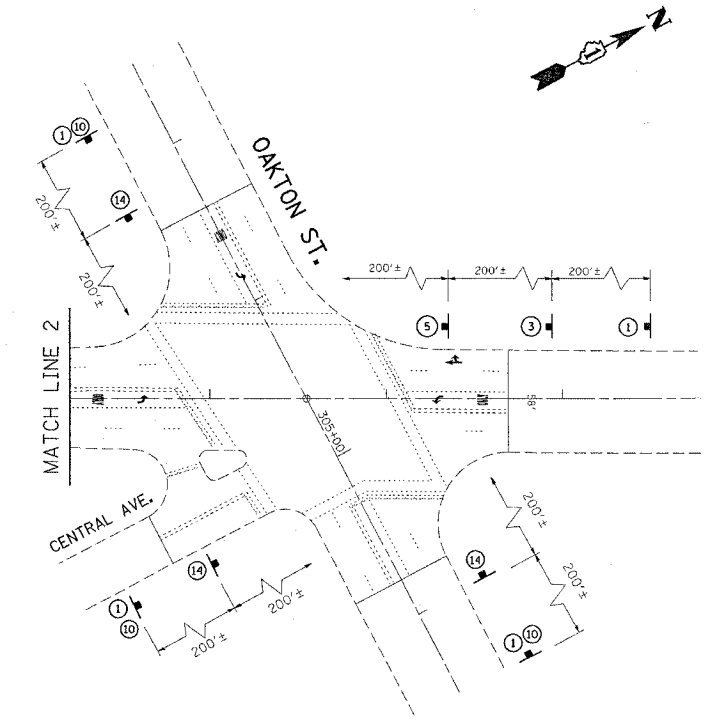
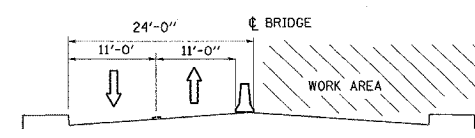
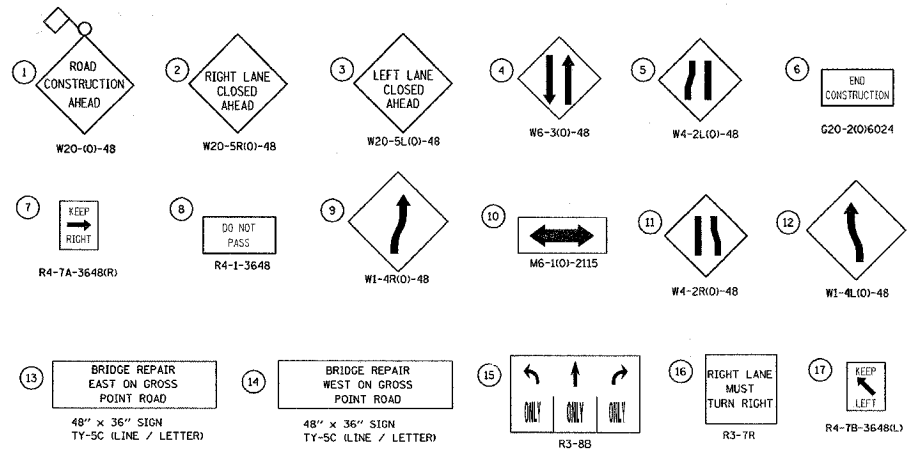
NOTES:

BARRICADES (TYPE I OR II) SHALL BE PLACED AT 50' C-C ON TANGENTS, 25' C-C ON TAPERS AND 12' C-C ON RADII

SIGNS SHALL BE PLACED IN ACCORDANCE TO TRAFFIC CONTROL STANDARDS

LEGEND

- WORK AREA
- TEMPORARY CONC. BARRIER
- TYPE I OR II BARRICADES W/ STEADY BURN LIGHT 25' C-C
- ARROW BOARD
- TYPE III BARRICADES (2) WITH HIGH INTENSITY FLASHING LIGHT ON EACH (TYP.)
- SIGN ON PERMANENT OR PORTABLE SUPPORT
- IMPACT ATTENUATOR



REVISIONS		ILLINOIS DEPARTMENT OF TRANSPORTATION SUGGESTED TRAFFIC CONTROL PLAN GROSS POINT RD. OVER EDENS EXPRESSWAY S.N. 016-0725
NAME	DATE	

SCALE: VERT. 1"=50'  
HORIZ. 1"=50'

DATE \_\_\_\_\_ DRAWN BY \_\_\_\_\_  
CHECKED BY \_\_\_\_\_

PLOT DATE = 3/23/2006  
FILE NAME = c:\p\proj\p05\1048\1048.dwg  
PLOT SCALE = 50.000 / IN.  
USER NAME = w11gremdp