

STATE OF ILLINOIS
DEPARTMENT OF TRANSPORTATION

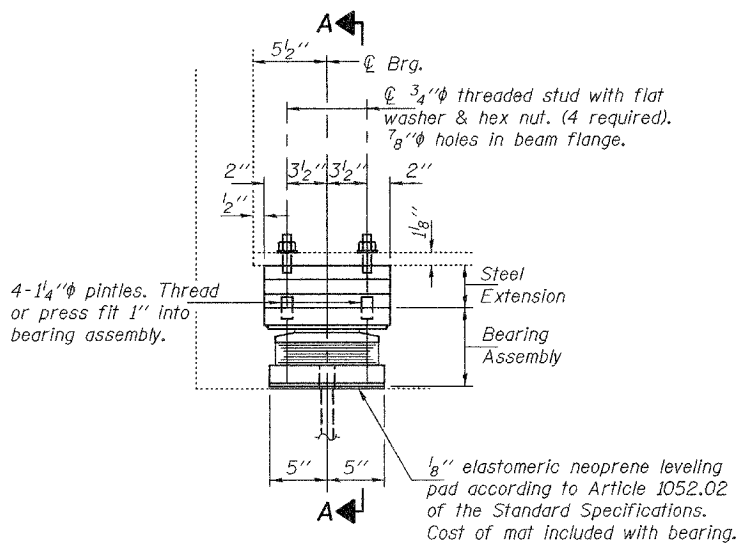
ROUTE NO.	SECTION	COUNTY	TOTAL SHEETS	SHEET NO.
		COOK	37	10
SHEET NO. 2 3 SHEETS				
FED. ROAD DIST. NO. 7	ILLINOIS	FED. AID PROJECT-		

Contract No. 62903

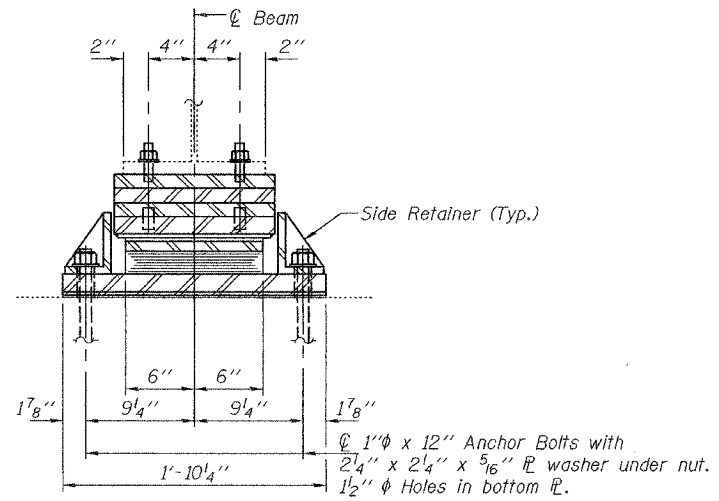
BEAM REACTIONS

R _D	(K)	27.2
R _L	(K)	32.9
Imp.	(K)	8.6
R (Total)	(K)	68.7

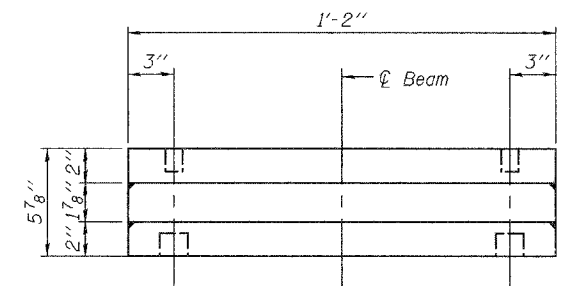
Notes:
Diaphragm removal and reinstallation may be required to facilitate drilling holes. Cost included with Furnishing and Erecting Structural Steel.
New steel extensions, side retainers, shim plates, connection bolts, and anchor bolts are included with Furnishing and Erecting Structural Steel.
See Sheet 3 of 3 for Anchor Bolt installation.
Prior to ordering any material, the Contractor shall verify in the field all bearing height and shim thickness dimensions.
Min. jack capacity = 30 Tons.



ELEVATION AT ABUTMENTS

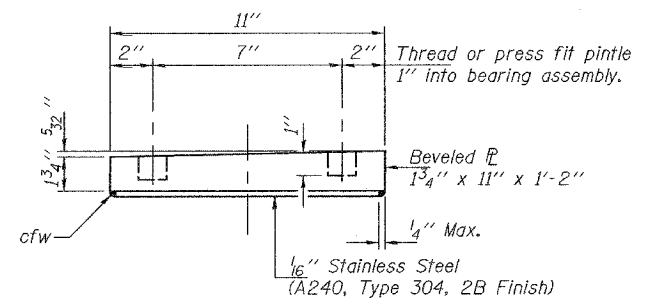


SECTION A-A

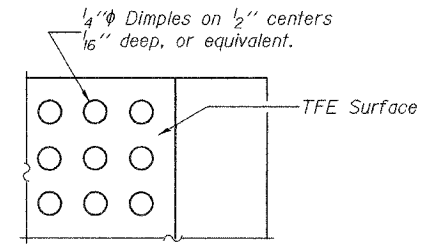


VIEW B-B

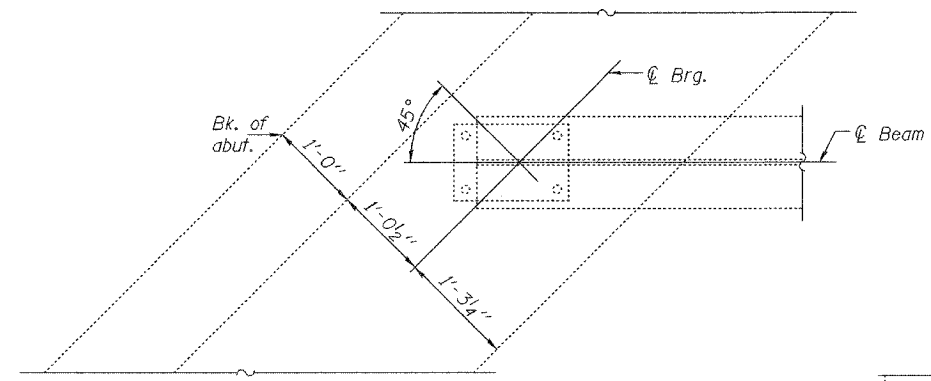
TYPE II TFE ELASTOMERIC EXP. BRG.



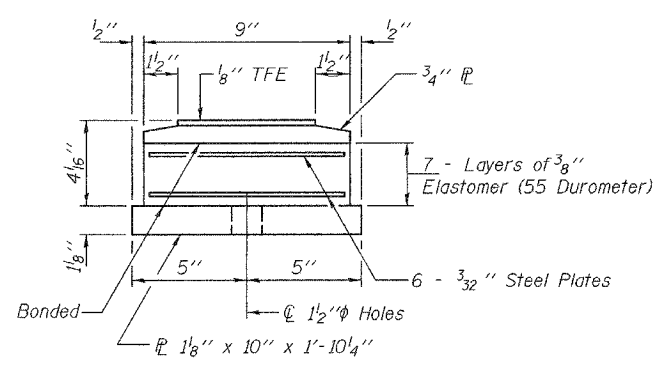
TOP BEARING ASSEMBLY



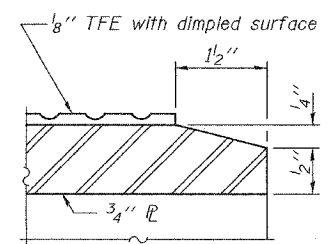
PLAN-TFE SURFACE



EXISTING PLAN



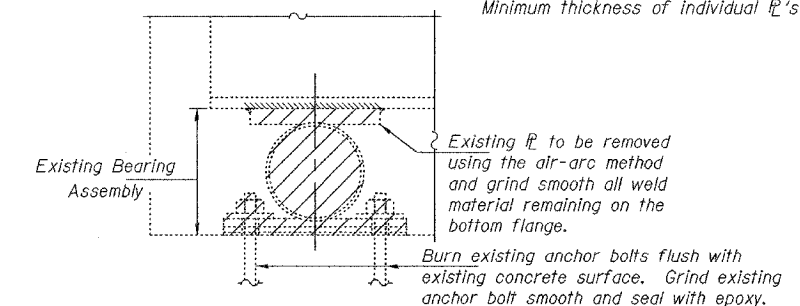
BOTTOM BEARING ASSEMBLY



SECTION THRU TFE

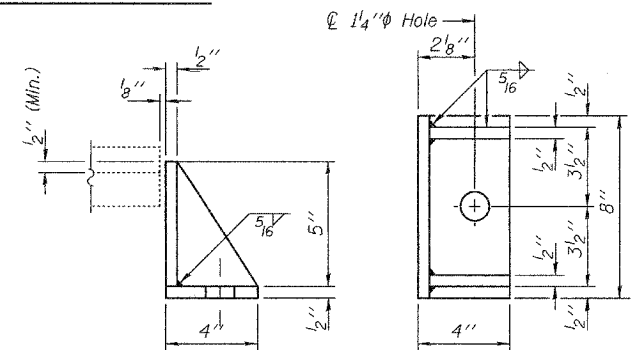
Note: The 1/8" TFE sheet shall be bonded directly to the top steel plate with a two-component, medium viscosity epoxy resin, conforming to the requirements of the Federal Specification MMM-A-134, Type I. The bond agent shall be applied on the full area of the contact surfaces.

Bonding of 1/8" TFE sheet during vulcanizing process will be permitted provided the process and method of adjusting assembly height is approved by the Engineer.



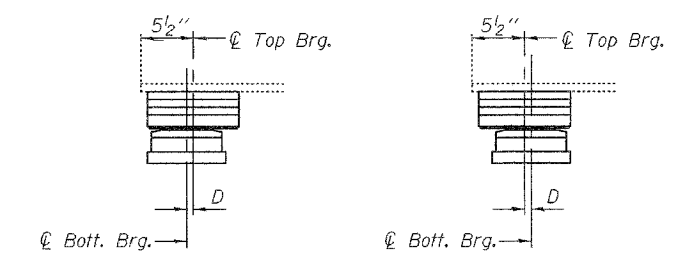
EXISTING BEARING REMOVAL DETAIL

Cost included with Jack and Remove Existing Bearings.



SIDE RETAINER

Equivalent rolled angle with stiffeners will be allowed in lieu of welded plates.



SETTING ANCHOR BOLTS AT EXP. BRG.
D = 1/8" per each 100' of expansion for every 15° temp. change from the normal temp. of 50°F.

REPAIR DETAILS
GROSS POINT RD. OVER I-94
COOK COUNTY
SN 016-0725

DESIGNED	SJB
CHECKED	VHV
DRAWN	baliva
CHECKED	SJB VHV

MAY 5, 2006
EXAMINED John A. Morris
ENGINEER OF STRUCTURAL SERVICES
PASSED Ralph E. Anderson
ENGINEER OF BRIDGES AND STRUCTURES