

62908

F.A.P. RTE.	SECTION	COUNTY	TOTAL SHEETS	SHEET NO.
353	2005-004 TS	COOK	20	1

INDEX OF SHEETS

- 1 TITLE SHEET
- 2 GENERAL NOTES AND SUMMARY OF QUANTITIES
- 3-6 STANDARD TRAFFIC SIGNAL DESIGN DETAILS
- 7 TEMPORARY TRAFFIC SIGNAL INSTALLATION PLAN, U.S. RTE. 30 (LINCOLN HWY.) & FORD PLANT ENTRANCE
- 8 TEMPORARY TRAFFIC SIGNAL CABLE PLAN & SEQUENCE OF OPERATION, U.S. RTE. 30 (LINCOLN HWY.) & FORD PLANT ENTRANCE
- 9 TRAFFIC SIGNAL INSTALLATION PLAN, U.S. RTE. 30 (LINCOLN HWY.) & FORD PLANT ENTRANCE
- 10 TRAFFIC SIGNAL CABLE PLAN, U.S. RTE. 30 (LINCOLN HWY.) & FORD PLANT ENTRANCE
- 11 TRAFFIC SIGNAL SEQUENCE OF OPERATIONS & SCHEDULE OF QUANTITIES, U.S. RTE. 30 (LINCOLN HWY.) & FORD PLANT ENTRANCE
- 12 TRAFFIC SIGNAL INSTALLATION PLAN, U.S. RTE. 30 (LINCOLN HWY.) & COTTAGE GROVE AVE.
- 13 TRAFFIC SIGNAL CABLE PLAN, TRAFFIC SIGNAL SEQUENCE OF OPERATION & SCHEDULE OF QUANTITIES, U.S. RTE. 30 (LINCOLN HWY.) & COTTAGE GROVE AVE.
- 14 TRAFFIC SIGNAL INSTALLATION PLAN, U.S. RTE. 30 (LINCOLN HWY.) & ELLIS ST.
- 15 TRAFFIC SIGNAL CABLE PLAN, TRAFFIC SIGNAL SEQUENCE OF OPERATION & SCHEDULE OF QUANTITIES, U.S. RTE. 30 (LINCOLN HWY.) & ELLIS ST.
- 16 TRAFFIC SIGNAL INSTALLATION PLAN, U.S. RTE. 30 (LINCOLN HWY.) & WOODLAWN AVE.
- 17 TRAFFIC SIGNAL CABLE PLAN, TRAFFIC SIGNAL SEQUENCE OF OPERATION & SCHEDULE OF QUANTITIES, U.S. RTE. 30 (LINCOLN HWY.) & WOODLAWN AVE.
- 18-19 INTERCONNECT PLANS, U.S. RTE. 30 (LINCOLN HWY.) FROM FORD PLANT ENTRANCE TO WOODLAWN AVE.
- 20 INTERCONNECT SCHEMATIC AND SCHEDULE OF QUANTITIES

STATE OF ILLINOIS
DEPARTMENT OF TRANSPORTATION
DIVISION OF HIGHWAYS

**PLANS FOR PROPOSED
FEDERAL AID HIGHWAY**

DISTRICT 1

**TRAFFIC SIGNAL MODERNIZATION AND
FIBER OPTIC COMMUNICATIONS NETWORK**

**U.S. ROUTE 30 (LINCOLN HIGHWAY) FROM
FORD PLANT ENTRANCE TO WOODLAWN AVENUE**

PROJECT: CMF-0353(011)

F.A.P. ROUTE 353
SECTION 2005-004 TS
COOK COUNTY

C-91-112-05

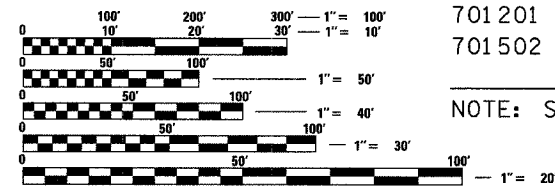


LOCATION OF SECTION INDICATED THUS: -

STANDARD DRAWINGS

701006	701011	701101	701301	702001
424001	720001	813001	814001	814006
857001	877001	877006	886006	878001
880001	880006	886001	701426	701106
701201	701316	701321	701406	701501
701502	701606	701601	701701	701801

NOTE: STANDARD DRAWINGS REQUIRED (CIRCLED).

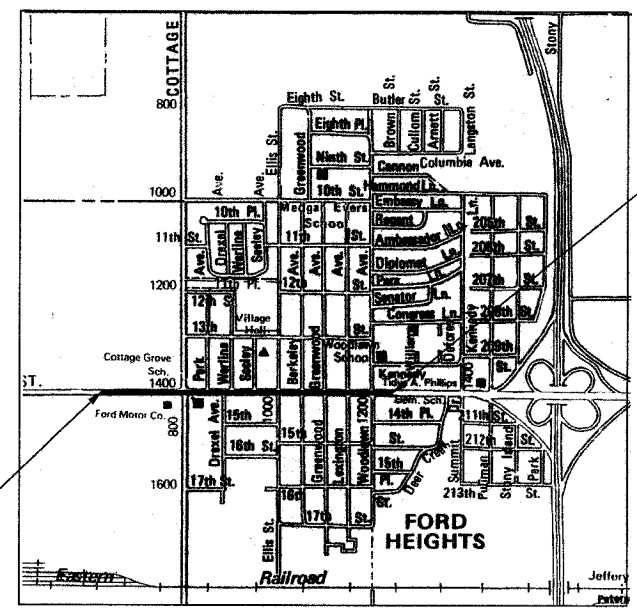


FULL SIZE PLANS HAVE BEEN PREPARED USING STANDARD ENGINEERING SCALES. REDUCED SIZED PLANS WILL NOT CONFORM TO STANDARD SCALES. IN MAKING MEASUREMENTS ON REDUCED PLANS, THE ABOVE SCALES MAY BE USED.

PREPARED BY: _____
TRAFFIC ENGINEER DATE

IMPROVEMENT LOCATED IN THE VILLAGE OF FORD HEIGHTS AND CITY OF CHICAGO HEIGHTS

BLOOM TOWNSHIP



LOCATION MAP

PROJECT ENDS

PROJECT BEGINS

FOR UNDERGROUND UTILITY LOCATIONS

ILLINOIS ONE-CALL SYSTEM
(800) 892-0123

STATE OF ILLINOIS
DEPARTMENT OF TRANSPORTATION
DIVISION OF HIGHWAYS

SUBMITTED May 12, 2006
Diane M. O'Keefe
DEPUTY DIRECTOR OF HIGHWAYS, REGION ENGINEER

20

ENGINEER OF PROJECT DEVELOPMENT AND IMPLEMENTATION
May 12, 2006
Mike Hume
ENGINEER OF DESIGN AND ENVIRONMENT

May 12, 2006
Milton R. Sosa P.E.
DIRECTOR OF HIGHWAYS, CHIEF ENGINEER

**PRINTED BY AUTHORITY
OF THE STATE OF ILLINOIS**

BUREAU OF TRAFFIC: STEVE TRAVIA / DARYLE DREW 847-705-4420

CONTRACT NO. 62908