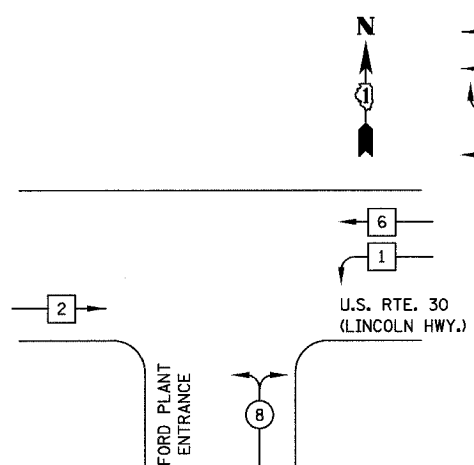


F.A.P. RTE.	SECTION	COUNTY	TOTAL SHEETS	SHEET NO.
353	2005-004 TS	COOK	20	8
STA. 210+93		TO STA. 255+93		
FED. ROAD DIST. NO. 7		ILLINOIS FED. AID PROJECT		
CONTRACT NO. 62908				



TEMPORARY CONTROLLER SEQUENCE



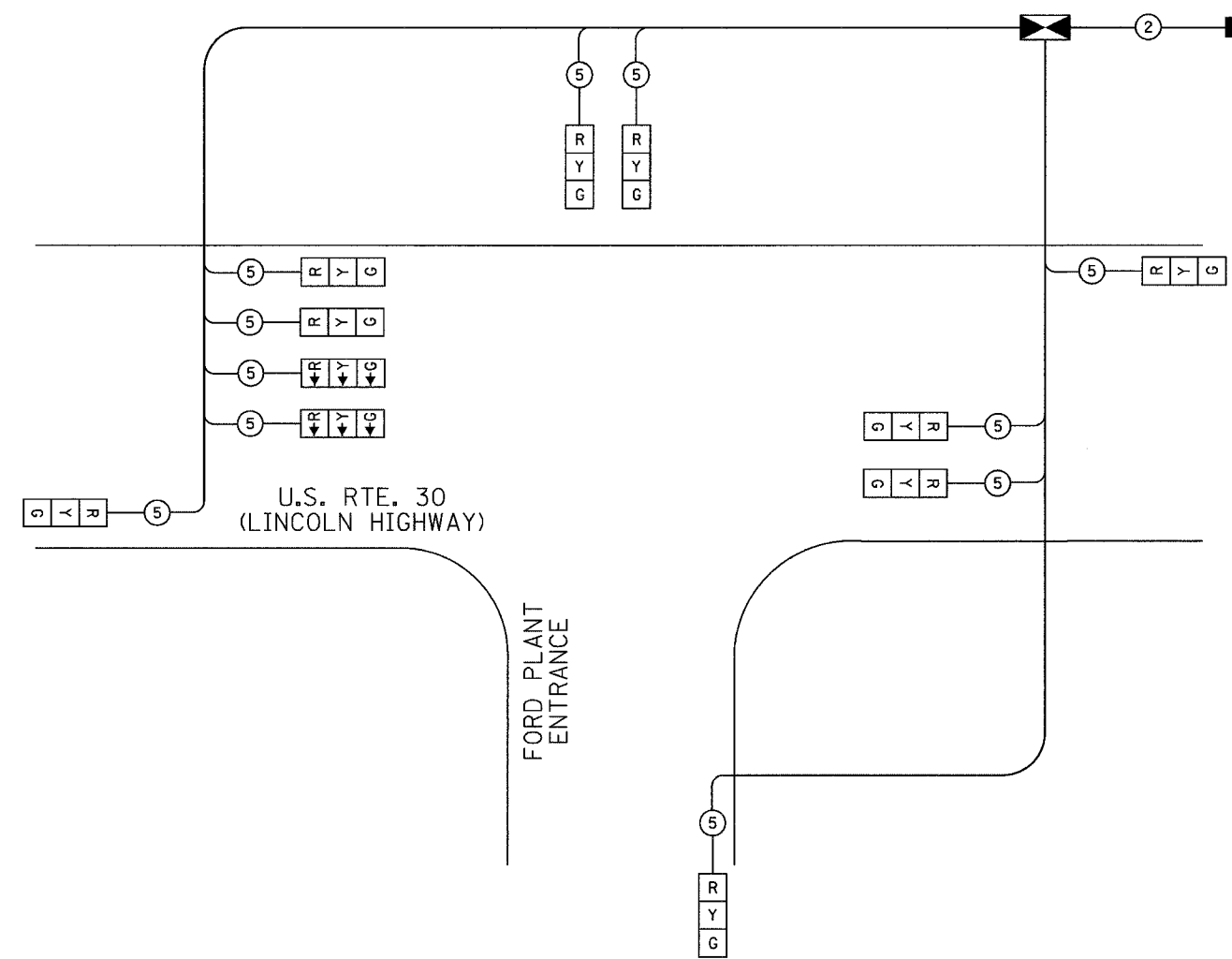
TEMPORARY PHASE DESIGNATION DIAGRAM

LEGEND

- DUAL ENTRY PHASE
- SINGLE ENTRY PHASE
- OVERLAP
- PEDESTRIAN PHASE
- NUMBER REFERS TO ASSOCIATED PHASE

CABLE PLAN LEGEND

- |                                                    |                                                                     |
|----------------------------------------------------|---------------------------------------------------------------------|
| 8" (200mm) TRAFFIC SIGNAL SECTION                  | 12" (300mm) TRAFFIC SIGNAL SECTION                                  |
| 12" (300mm) PEDESTRIAN SIGNAL SECTION              | 12" (300mm) PEDESTRIAN SIGNAL SECTION                               |
| CONTROLLER CABINET                                 | SERVICE INSTALLATION                                                |
| TELEPHONE CONNECTION                               | MAGNETIC DETECTOR                                                   |
| EMERGENCY VEHICLE LIGHT DETECTOR                   | CONFIRMATION BEACON                                                 |
| PUSHBUTTON DETECTOR                                | VEHICLE DETECTOR, INDUCTION LOOP                                    |
| MICROWAVE VEHICLE SENSOR                           | SIGNAL FACE WITH BACKPLATE, "P" INDICATES PROGRAMMED HEAD           |
| RAILROAD CONTROL CABINET                           | ILLUMINATED SIGN "NO LEFT TURN"                                     |
| ILLUMINATED SIGN "NO RIGHT TURN"                   | GROUND ROD AT HANDHOLE (H), DOUBLE HANDHOLE (H), OR CONTROLLER (C). |
| GROUND ROD AT POST (P), OR MAST ARM POLE (MA).     | GROUND ROD AT ELECTRIC SERVICE INSTALLATION                         |
| GROUND CABLE IN CONDUIT NO. 6 SOLID COPPER (GREEN) | FIBER OPTIC CABLE IN CONDUIT NO. 62.5/125 2-MMI2F SMI2F             |



TEMPORARY CABLE PLAN  
NOT TO SCALE

I.D.O.T. TRAFFIC SIGNAL INSTALLATION ELECTRICAL SERVICE REQUIREMENTS					TOTAL WATTAGE
TYPE	NO. LAMPS	WATTAGE		% OPERATION	
SIGNAL (RED)	11	135		0.50	743
(YELLOW)	11	135		0.25	372
(GREEN)	11	135		0.25	372
ARROW		135		0.10	
PED SIGNAL		90		1.00	
CONTROLLER	1	100		1.00	100
ILLUM. SIGN		84		0.05	
FLASHER				0.50	
TOTAL =					1487

ENERGY COSTS TO: ILLINOIS DEPARTMENT OF TRANSPORTATION  
201 W. CENTER CT.  
SCHAUMBURG, IL 60196

ENERGY SUPPLY: CONTACT: PHIL GASTON  
PHONE: (708) 235-2338  
COMPANY: COMMONWEALTH EDISON

REVISIONS	
NAME	DATE

ILLINOIS DEPARTMENT OF TRANSPORTATION  
TEMPORARY TRAFFIC SIGNAL  
CABLE PLAN &  
SEQUENCE OF OPERATIONS  
U.S. RTE. 30 (LINCOLN HWY.) &  
FORD PLANT ENTRANCE

SCALE: NONE  
DATE: 3/10/06

DRAWN BY: BRD  
DESIGNED BY: BRD  
CHECKED BY: JJE/KMM