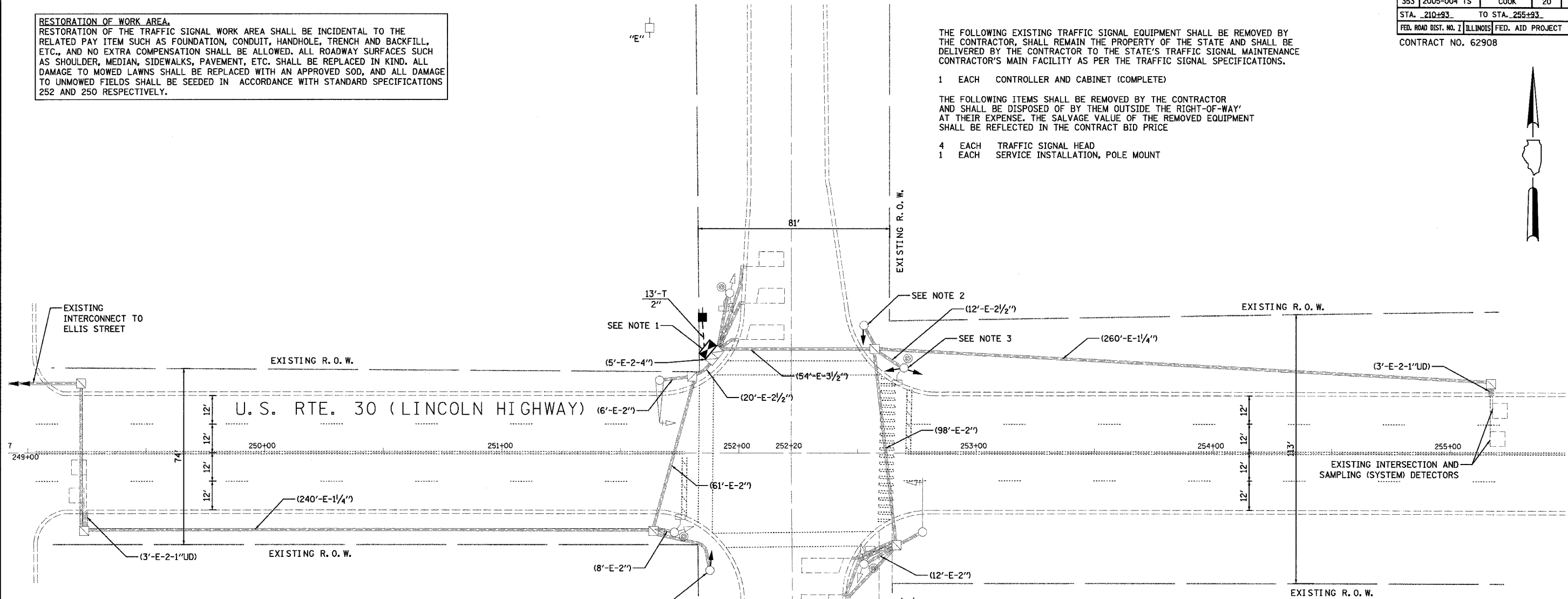


F.A.R. RTE.	SECTION	COUNTY	TOTAL SHEETS	SHEET NO.
353	2005-004 TS	COOK	20	16
STA. 210+93		TO STA. 255+93		
FED. ROAD DIST. NO. 7		ILLINOIS FED. AID PROJECT		
CONTRACT NO. 62908				

RESTORATION OF WORK AREA.
 RESTORATION OF THE TRAFFIC SIGNAL WORK AREA SHALL BE INCIDENTAL TO THE RELATED PAY ITEM SUCH AS FOUNDATION, CONDUIT, HANDHOLE, TRENCH AND BACKFILL, ETC., AND NO EXTRA COMPENSATION SHALL BE ALLOWED. ALL ROADWAY SURFACES SUCH AS SHOULDER, MEDIAN, SIDEWALKS, PAVEMENT, ETC. SHALL BE REPLACED IN KIND. ALL DAMAGE TO MOWED LAWNS SHALL BE REPLACED WITH AN APPROVED SOD, AND ALL DAMAGE TO UNMOWED FIELDS SHALL BE SEEDED IN ACCORDANCE WITH STANDARD SPECIFICATIONS 252 AND 250 RESPECTIVELY.

THE FOLLOWING EXISTING TRAFFIC SIGNAL EQUIPMENT SHALL BE REMOVED BY THE CONTRACTOR, SHALL REMAIN THE PROPERTY OF THE STATE AND SHALL BE DELIVERED BY THE CONTRACTOR TO THE STATE'S TRAFFIC SIGNAL MAINTENANCE CONTRACTOR'S MAIN FACILITY AS PER THE TRAFFIC SIGNAL SPECIFICATIONS.

- 1 EACH CONTROLLER AND CABINET (COMPLETE)
- THE FOLLOWING ITEMS SHALL BE REMOVED BY THE CONTRACTOR AND SHALL BE DISPOSED OF BY THEM OUTSIDE THE RIGHT-OF-WAY AT THEIR EXPENSE. THE SALVAGE VALUE OF THE REMOVED EQUIPMENT SHALL BE REFLECTED IN THE CONTRACT BID PRICE
- 4 EACH TRAFFIC SIGNAL HEAD
 - 1 EACH SERVICE INSTALLATION, POLE MOUNT



TRAFFIC SIGNAL LEGEND

PROPOSED	EXISTING	PROPOSED	EXISTING
CONTROLLER		CAST IRON JUNCTION BOX	
SERVICE INSTALLATION		EMERGENCY VEHICLE LIGHT DETECTOR	
SIGNAL HEAD		CONFIRMATION BEACON	
SIGNAL HEAD WITH BACKPLATE		SIGNAL HEAD OPTICALLY PROGRAMMED	
SIGNAL HEAD, PEDESTRIAN		CONDUIT SPLICE	
SIGNAL POST		WOOD POLE	
MAST ARM ASSEMBLY AND POLE, STEEL		RACEWAY FOR MAGNETIC DETECTOR, TYPE I OR TYPE II	
MAST ARM ASSEMBLY AND POLE, ALUMINUM		VEHICLE DETECTOR, NON COMPENSATED MAGNETIC TYPE	
COMBINATION MAST ARM ASSEMBLY AND POLE STEEL WITH LUMINAIRE		RAILROAD CONTROL CABINET	
UNIT DUCT	UD	TELEPHONE CONNECTION	
COMMON TRENCH	CT	ILLUMINATED SIGN "NO LEFT TURN"	
HANDHOLE		ILLUMINATED SIGN "NO RIGHT TURN"	
HEAVY DUTY HANDHOLE			
DOUBLE HANDHOLE			
G.S. CONDUIT IN TRENCH (T) OR PUSHED (P)			
PEDESTRIAN PUSHBUTTON DETECTOR			
DETECTOR LOOP			

NOTES:

1. REMOVE EXISTING LOCAL CONTROLLER AND CABINET. INSTALL NEW LOCAL CONTROLLER AND TYPE IV CABINET ON EXISTING FOUNDATION.
2. REMOVE EXISTING 1-FACE, 3-SECTION SIGNAL HEAD WITH 12" RED INDICATION AND 8" GREEN AND YELLOW INDICATIONS, AND REPLACE WITH 1-FACE, 3-SECTION SIGNAL HEAD WITH ALL 12" INDICATIONS.
3. REMOVE EXISTING 2-FACE, 3-SECTION SIGNAL HEAD WITH 12" RED INDICATION AND 8" GREEN AND YELLOW INDICATIONS, AND REPLACE WITH 2-FACE, 3-SECTION SIGNAL HEAD WITH ALL 12" INDICATIONS.

NOTE:
 SOME CONDUIT INFORMATION OMITTED
 DUE TO UNAVAILABLE AS-BUILT INFORMATION

REVISIONS	
NAME	DATE

ILLINOIS DEPARTMENT OF TRANSPORTATION
TRAFFIC SIGNAL INSTALLATION PLAN
 U.S. RTE. 30 (LINCOLN HWY.) &
 WOODLAWN AV.
 SCALE: 1"=20'
 DATE: 3/10/06
 DRAWN BY: BRD/OJT
 DESIGNED BY: BRD
 CHECKED BY: JJE/KMM