

STATE OF ILLINOIS
DEPARTMENT OF TRANSPORTATION

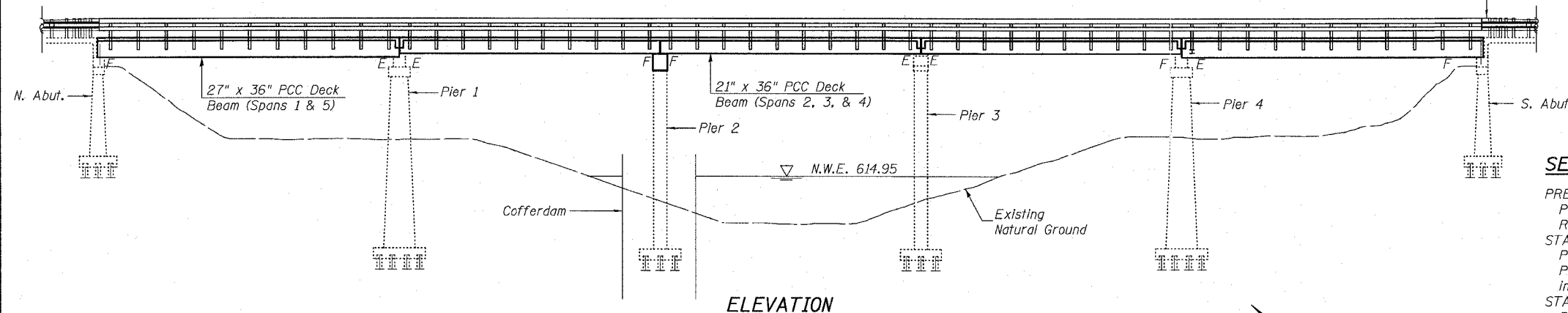
ROUTE NO.	SECTION	COUNTY	TOTAL SHEETS	SHEET NO.
FAP 301	28BR-1	JO DAVIESS	53	9
FED. ROAD DIST. NO. 7	BILLINGS	FED. AID PROJECT		

SHEET NO. 1
27 SHEETS
Contract # 64A49

Existing Structure: SN 043-0010 was rebuilt in 1970 as SBI Rt 5 at Sta. 117+50. The structure consists of 5 simple span PCC-deck beams on closed abutments, solid wall piers, and hammerhead piers, all supported on wood piles. The abutments and piers 1 & 4 were built in 1925. Piers 2 & 3 are hammerhead piers and were built in 1970. The bk. to bk. of Abutments dimension is approximately 288'-0" and the o. to o. width measures 33'-0". The existing superstructure shall be removed and replaced with PCC deck beams. The caps of the substructure will be repaired. Stage construction will be used. The existing approach pavements shall remain, but shall be milled 2" to butt into the proposed top of deck.

No Salvage

See Roadway Plans for Approach Pavement and Traffic Barrier Terminal



ELEVATION

SEQUENCE OF CONSTRUCTION

- PRE-STAGE I
Provide Traffic control for Pre-Stage I construction as shown on the Roadway Plans. Remove and replace Beam #5 Span 2 as shown on sheets 23 & 24 of 27.
- STAGE I
Provide Traffic control for Stage I construction as shown on the Roadway Plans. Perform Stage I removal and construction as shown in the plans, including the installation of the Pier 2 Temporary Support System.
- STAGE II
Provide Traffic control for Stage II Construction as shown on the Roadway Plans. Perform Stage II removal and construction as shown in the plans.

DESIGN STRESSES

NEW & EXISTING CONSTRUCTION
FIELD UNITS

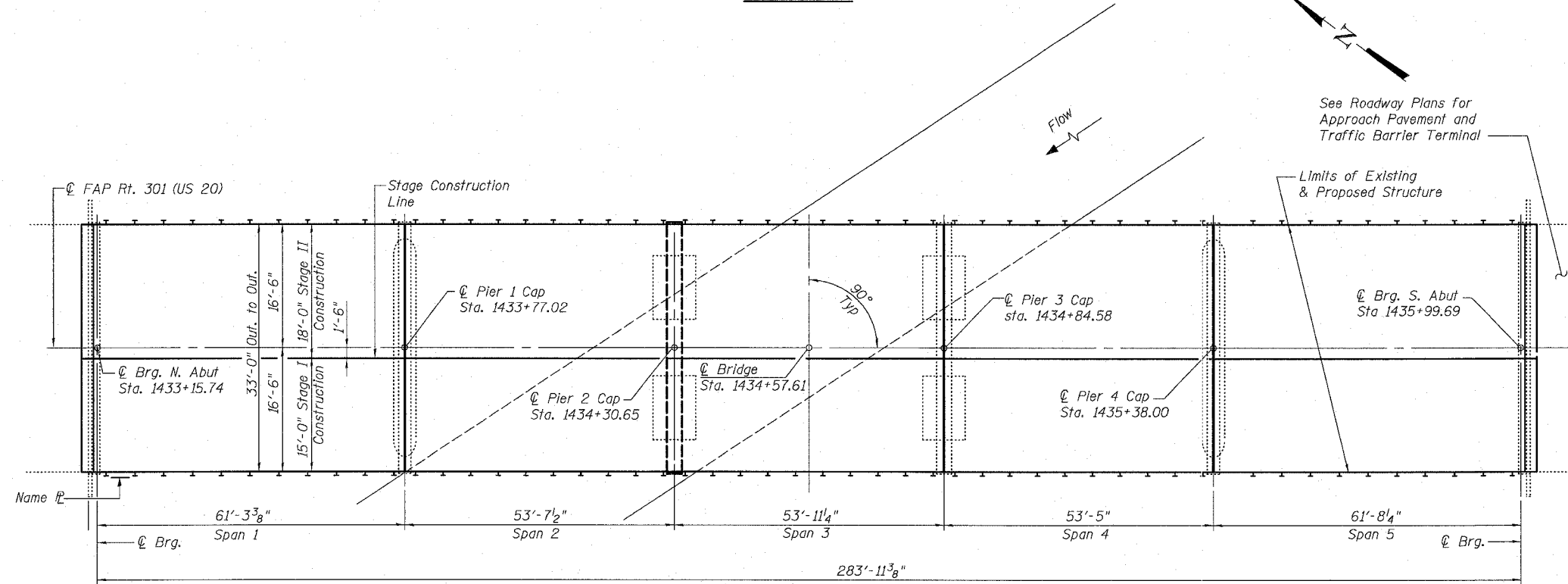
- $f'_c = 5,000$ psi (Concrete Wearing Surface)
 - $f'_c = 3,500$ psi (All other)
 - $f_y = 60,000$ psi (reinforcement)
- PRECAST PRESTRESSED UNITS
- $f'_c = 5,000$ psi
 - $f_{ci} = 4,000$ psi
 - $f'_s = 270,000$ psi ($\frac{1}{2}$ " low relax strands)
 - $f_{si} = 201,960$ psi ($\frac{1}{2}$ " low relax strands)

LOADING HS20-44

No Allowance for Future Wearing Surface

DESIGN SPECIFICATIONS

2002 AASHTO

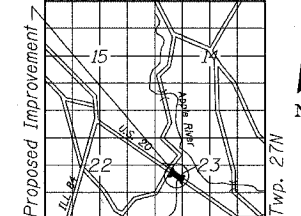


PLAN

See Roadway Plans for Approach Pavement and Traffic Barrier Terminal

Limits of Existing & Proposed Structure

Range 2E - 4th. PM



LOCATION SKETCH

DESIGNED	MO
CHECKED	CB
DRAWN	RG
CHECKED	DF



V3 Companies
7325 Janes Avenue
Woodridge, IL 60517
630.724.9200 phone
630.724.9202 fax
www.v3co.com



GENERAL PLAN AND ELEVATION

U.S. 20 OVER APPLE RIVER
F.A.P. ROUTE 301 - SEC. 28BR-1
JO DAVIESS COUNTY
STATION 1434+57.61
S.N. 043-0010