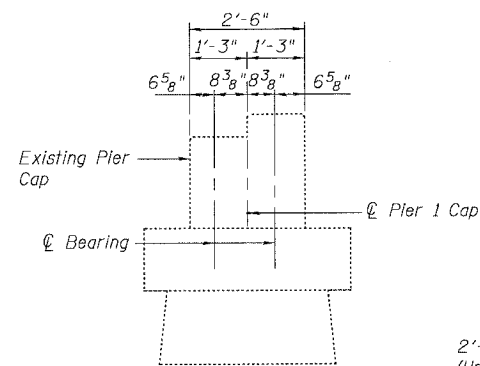


STATE OF ILLINOIS
DEPARTMENT OF TRANSPORTATION

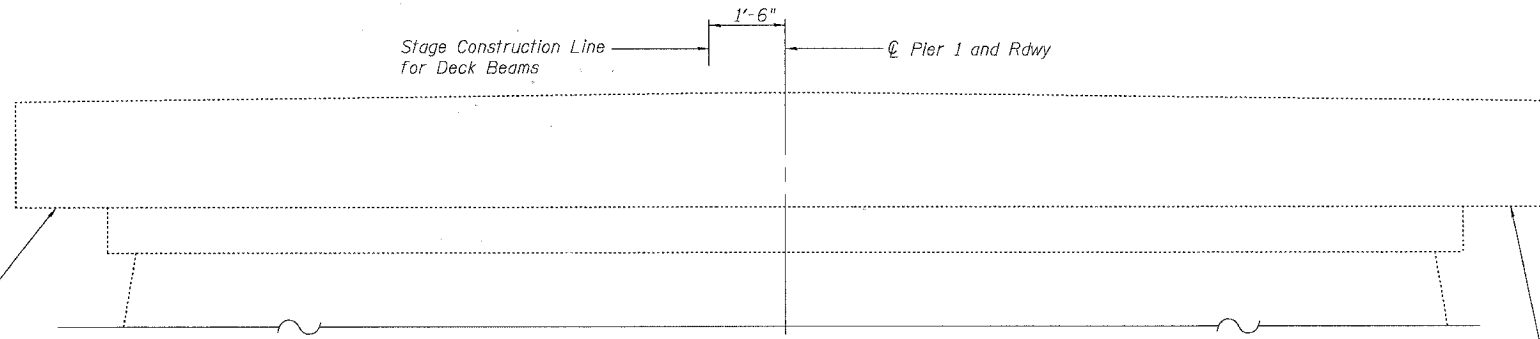
ROUTE NO.	SECTION	COUNTY	TOTAL SHEETS	SHEET NO.
FAP 301	28BR-1	JO DAVIESS	53	25
SHEET NO. 17				
27 SHEETS				

Contract # 64A49

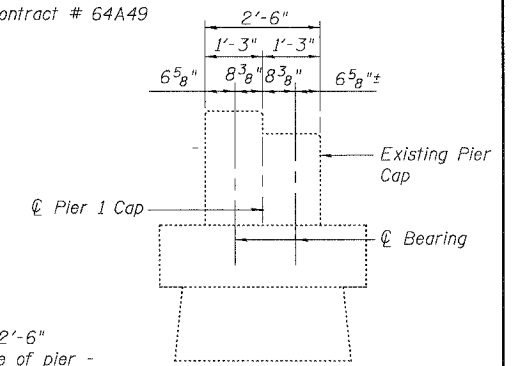


WEST END VIEW
(Looking East)

2'-0" x 2'-6"
(Underside of pier -
greater than 5")

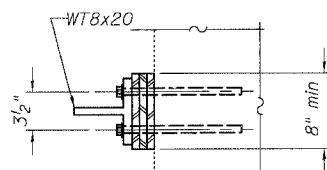


SOUTH ELEVATION - PIER 1
(Looking North)

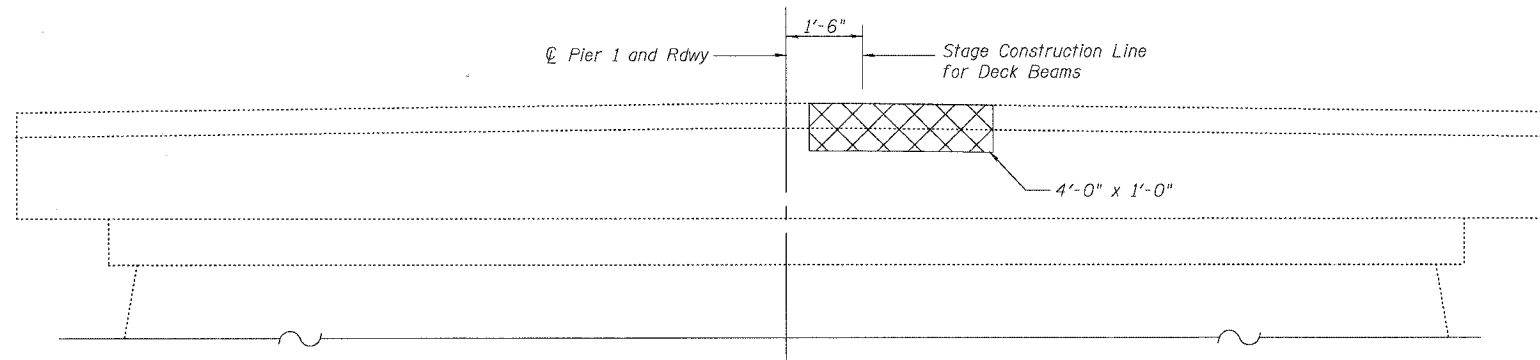


EAST END VIEW
(Looking East)

2'-0" x 2'-6"
(Underside of pier -
greater than 5")



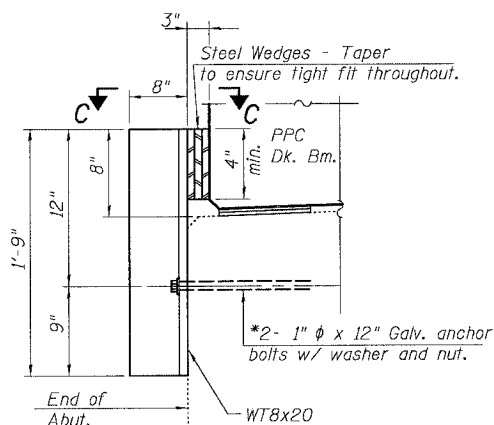
VIEW C-C



NORTH ELEVATION - PIER 1
(Looking South)

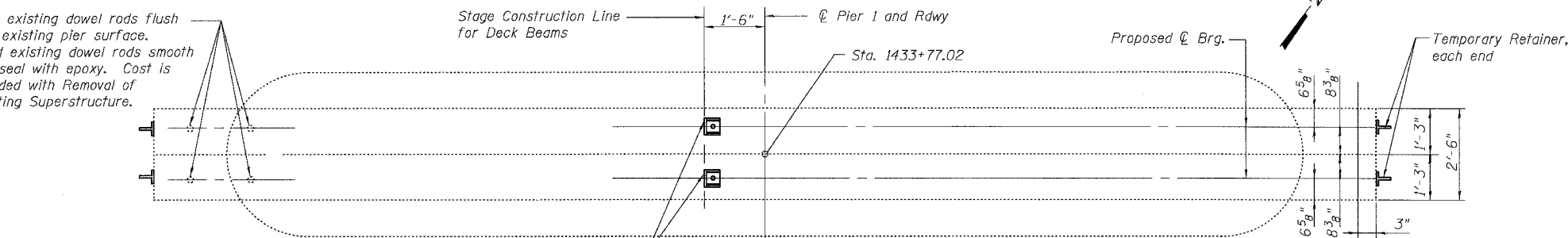
LEGEND

- Structural Repair of Concrete (Depth Equal to or Less Than 5")
- Structural Repair of Concrete (Depth Greater Than 5")

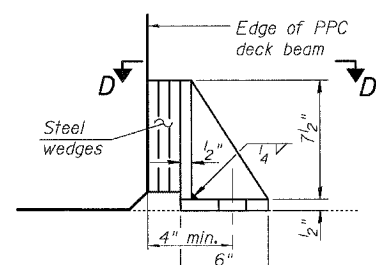


TEMPORARY RETAINER DETAIL
(At Exterior Beams)

Burn existing dowel rods flush with existing pier surface. Grind existing dowel rods smooth and seal with epoxy. Cost is included with Removal of Existing Superstructure.

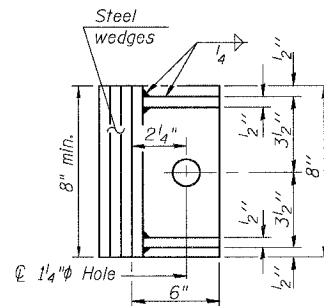


PLAN



*1" ϕ x 12" Galv. anchor bolts w/ 2 1/2" x 2 1/2" x 5/16" ϕ washer under nut.

ELEVATION



VIEW D-D

TEMPORARY RETAINER AT STAGE CONSTRUCTION LINE

(Equivalent rolled angle with stiffeners will be allowed in lieu of welded plates.)

Notes:
The concrete wearing surface (including blackout) shall be poured and cured prior to removing the Stage I Construction Temporary Retainers. Burn or cut the anchor bolt flush with existing pier cap surface. Grind anchor bolts smooth and seal with epoxy prior to Stage II Construction. Cost is included with Prestressed Concrete Deck Beams (21" Depth) or (27" Depth).

The concrete wearing surface (including blackout) shall be poured and cured prior to removing the temporary retainers. Anchor bolts may be left in place or removed as specified in the removal of Stage I Construction Temporary Retainers above.

*Cost of temporary retainers and accessories are included with Precast Prestressed Concrete Deck Beams (21" Depth) or (27" Depth).

*Anchor bolts or approved threaded rods to be drilled and grouted in place. See Anchor Bolt Detail sheet 22 of 27.

BILL OF MATERIAL

Item	Unit	Total
Structural Repair of Concrete (Depth Greater Than 5")	Sq. Ft.	14.0

PIER 1 REPAIRS

U.S. 20 OVER APPLE RIVER
F.A.P. ROUTE 301 - SEC. 28BR-1
JO DAVIESS COUNTY
STATION 1434+57.61
S.N. 043-0010

DESIGNED	MO
CHECKED	CB
DRAWN	RG
CHECKED	DF