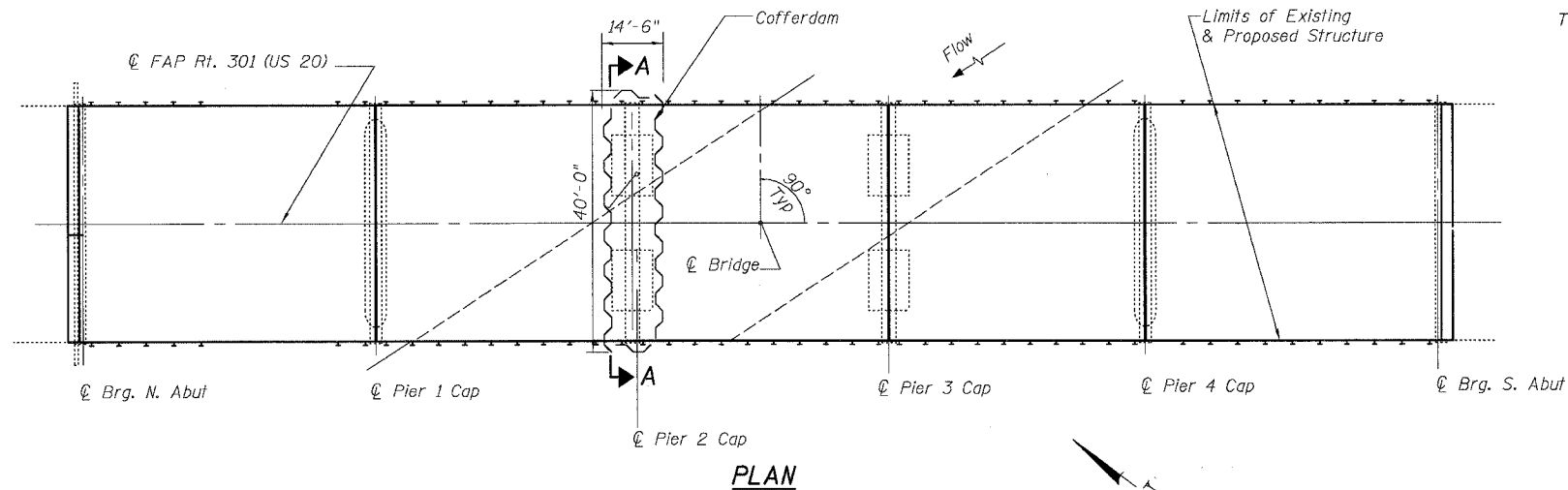


STATE OF ILLINOIS  
DEPARTMENT OF TRANSPORTATION

ROUTE NO.	SECTION	COUNTY	TOTAL SHEETS	SHEET NO.	SHEET NO.
FAP 301	28BR-1	JO DAVIESS	53	33	27 SHEETS
FED. ROAD DIST. NO. 7	ILLINOIS	FED. AID PROJECT			

Contract #64A49

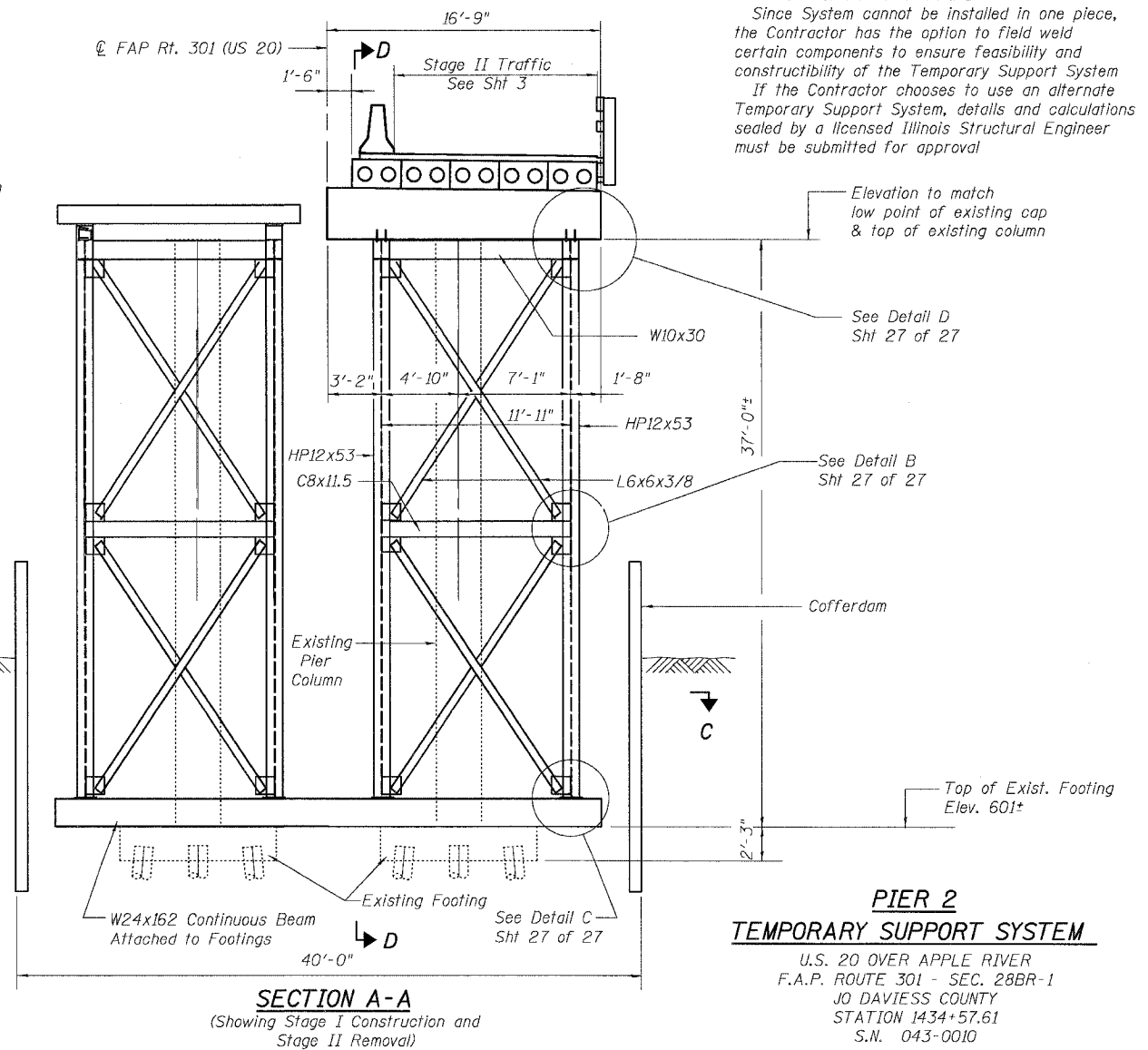
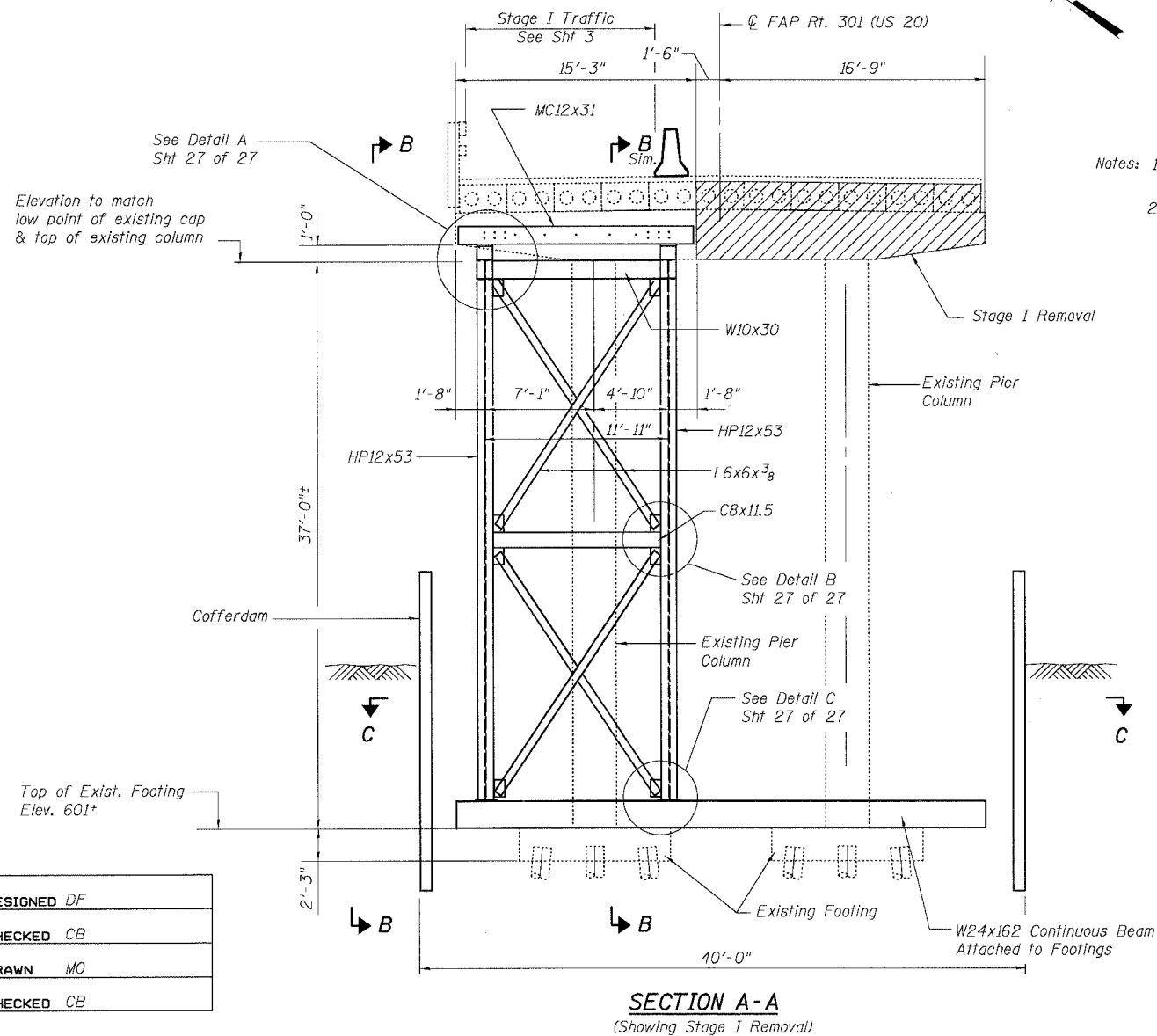


Temporary Support System Erection Sequence:

1. See sheet 23 and 24 of 27 for pre-stage I beam replacement.
2. After replacement is complete, shift traffic to East side (Stage I traffic).
3. Install the cofferdam at Pier 2. The Contractor has the option to remove Stage I beams prior to installing the cofferdam.
4. Erect portion of Temp Support System to support Stage I traffic shown in Section A-A.
5. Perform Stage I removal. Do NOT remove Pier 2 Cap prior to erecting the portion of Temporary Support System that supports Stage I traffic.
6. Install remaining Temporary Support System to support Pier 2 cap Stage I construction.
7. Complete Stage I Construction.
8. Shift traffic to West side (Stage II traffic).
9. Perform Stage II removal.
10. The Contractor has the option to use the support system for forming and shoring the proposed pier cap in Stage II construction.
11. Perform Stage II Construction.
12. The Temporary Support System may be removed when the Pier 2 cap has attained it's required strength according to the Standard Specifications and approval of the Engineer. Temp Support System must be removed prior to pouring Stage II wearing surface and abutment concrete structures. Once all Temporary Support System has been removed, the cofferdam at Pier 2 shall be removed.
14. Pour Stage II wearing surface and Stage II abutment concrete.
15. Complete Stage II construction.

Notes:  
See Sheet 26 for Sections B thru D and Sheet 27 for Details A thru D.  
Since System cannot be installed in one piece, the Contractor has the option to field weld certain components to ensure feasibility and constructibility of the Temporary Support System.  
If the Contractor chooses to use an alternate Temporary Support System, details and calculations sealed by a licensed Illinois Structural Engineer must be submitted for approval.

- Notes: 1. See additional Notes on sheets 26 of 27.  
2. Struts and bracing shown are on both North and South side of Pier 2.



**PIER 2  
TEMPORARY SUPPORT SYSTEM**  
U.S. 20 OVER APPLE RIVER  
F.A.P. ROUTE 301 - SEC. 28BR-1  
JO DAVIESS COUNTY  
STATION 1434+57.61  
S.N. 043-0010

DESIGNED	DF
CHECKED	CB
DRAWN	MO
CHECKED	CB