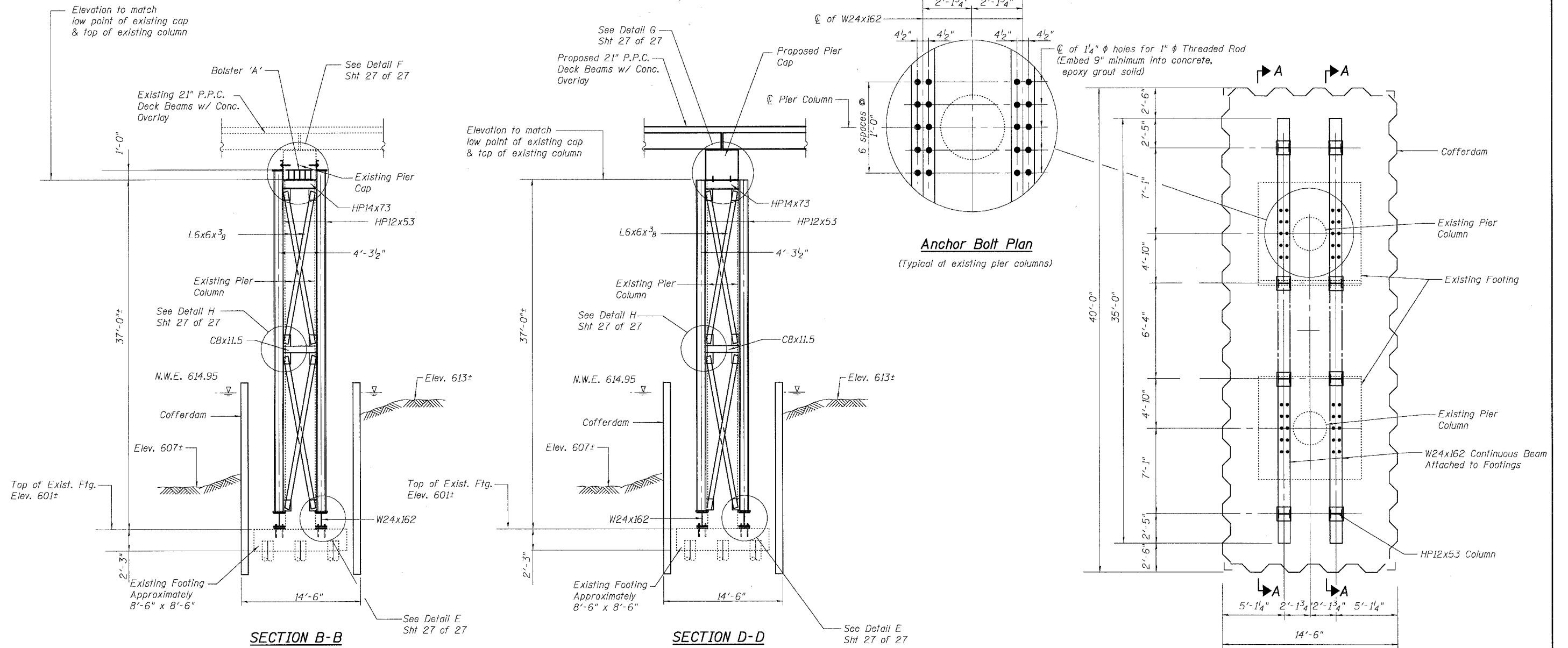


STATE OF ILLINOIS
DEPARTMENT OF TRANSPORTATION

ROUTE NO.	SECTION	COUNTY	TOTAL SHEETS	SHEET NO.	SHEET NO. 26 27 SHEETS
FAP 301	28BR-1	JO DAVIESS	53	34	
FED. ROAD DIST. NO. 7	ILLINOIS	FED. AID PROJECT			

Contract #64A49



Note: Contractor to verify grade elevations for the cofferdam and dimensions for the temporary support system in the field.

Notes: All structural steel shall conform to AASHTO Classification M-270 Gr. 36, unless otherwise noted.

Plan dimensions and details relative to existing structure have been taken from existing plans and are subject to nominal construction variations. It shall be the Contractor's responsibility to verify such dimensions and details in the field and make necessary approved adjustments prior to construction or ordering of materials. Such variations shall not be cause for additional compensation for a change in the scope of the work, however, the Contractor will be paid for the quantity actually furnished at the unit price for the work.

See Section 584 of the Std. Specs. for "Epoxy Grouting of Threaded Rods". All threaded rods shall be epoxy grouted a minimum of 9" into structurally sound concrete.

The cost of epoxy grouting threaded rods shall be included in the pay item Temporary Support System.

The cost of fabricating, furnishing, constructing, maintaining and subsequent removal and disposal of temporary support system according to the details shown shall be included in the pay item Temporary Support System.

Estimated weight of structural steel = 44,345 lbs. See specification for additional information.

BILL OF MATERIAL

Item	Unit	Total
Temporary Support System	L. Sum	1
Cofferdam (Pier 2)	Each	1
Cofferdam Excavation	Cu. Yd.	180

Note: See Sheet 27 for Details E thru H.

**PIER 2
TEMPORARY SUPPORT SYSTEM**

U.S. 20 OVER APPLE RIVER
F.A.P. ROUTE 301 - SEC. 28BR-1
JO DAVIESS COUNTY
STATION 1434+57.61
S.N. 043-0010

DESIGNED	DF
CHECKED	CB
DRAWN	MO
CHECKED	DF