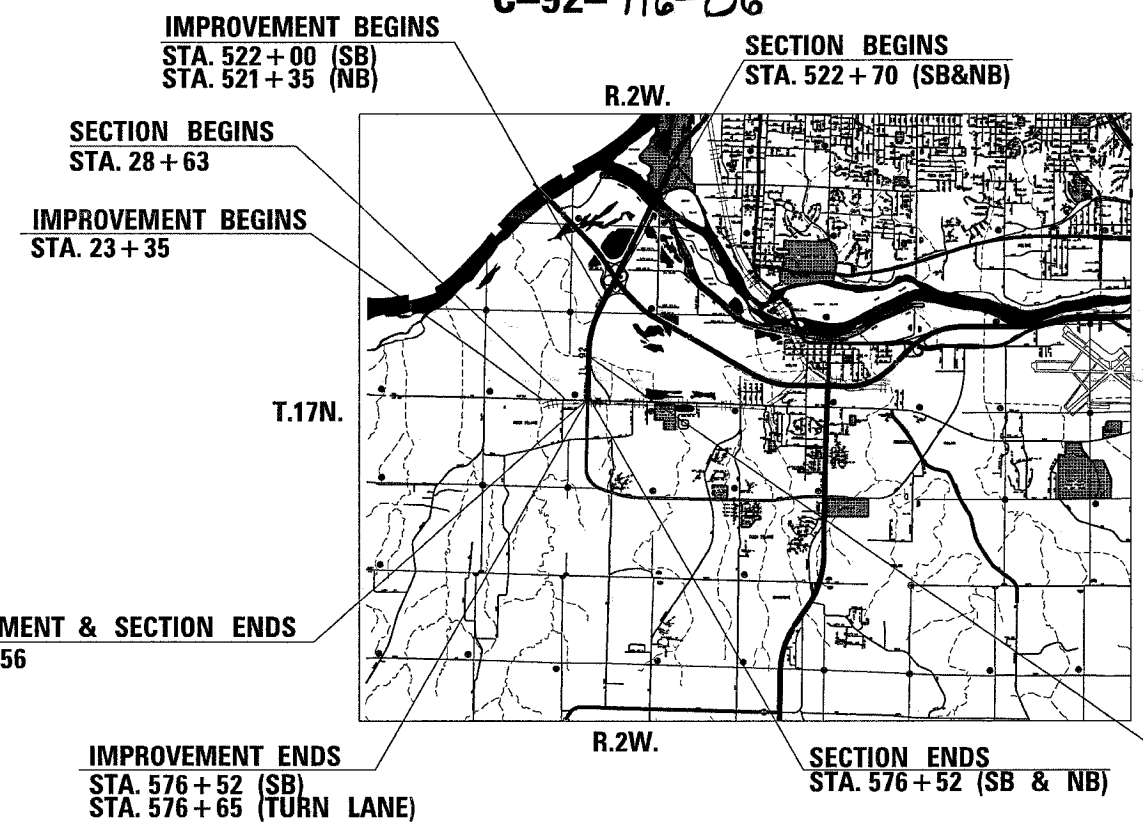


STATE OF ILLINOIS
 DEPARTMENT OF TRANSPORTATION
 DIVISION OF HIGHWAYS

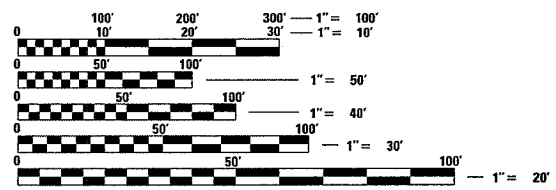
**PROPOSED
 HIGHWAY PLANS**

FAP ROUTE 308 (IL 92)
 SECTION (132,81-1-1)RS-1 & 132B-M
 PROJECT
 ROCK ISLAND COUNTY
 C-92-116-06

FOR INDEX OF SHEETS, SEE SHEET NO. 2
 FOR STATE STANDARDS, SEE SHEET NO. 2



BLACKHAWK TOWNSHIP SECTION 16, 21



FULL SIZE PLANS HAVE BEEN PREPARED USING STANDARD ENGINEERING SCALES. REDUCED SIZED PLANS WILL NOT CONFORM TO STANDARD SCALES. IN MAKING MEASUREMENTS ON REDUCED PLANS, THE ABOVE SCALES MAY BE USED.

J.U.L.I.E.
 JOINT UTILITY LOCATION INFORMATION FOR EXCAVATION
 1-800-892-0123

STATE OF ILLINOIS
 DEPARTMENT OF TRANSPORTATION
 DIVISION OF HIGHWAYS

SUBMITTED April 4 20 06
Jim J. Mordas
 DEPUTY DIRECTOR OF HIGHWAYS, REGION ENGINEER

May 12 20 06
Mike Hine
 ENGINEER OF DESIGN AND ENVIRONMENT

May 12 20 06
Milton R. See, PE
 DIRECTOR OF HIGHWAYS, CHIEF ENGINEER

**PRINTED BY THE AUTHORITY
 OF THE STATE OF ILLINOIS**

NET LENGTH OF PROJECT=5675 LIN. FT=1.07 MILES
 GROSS LENGTH OF PROJECT=6351 LIN. FT=1.20 MILES

CONTRACT NO. 64B16

FAP ROUTE 308 (IL 92) SECTION (132,81-1-1)RS-1 & 132B-M ROCK ISLAND COUNTY

PROJECT ENGINEER: BOB WAGNER (815) 284-5358

SQUAD LEADER: KEITH GENGLER