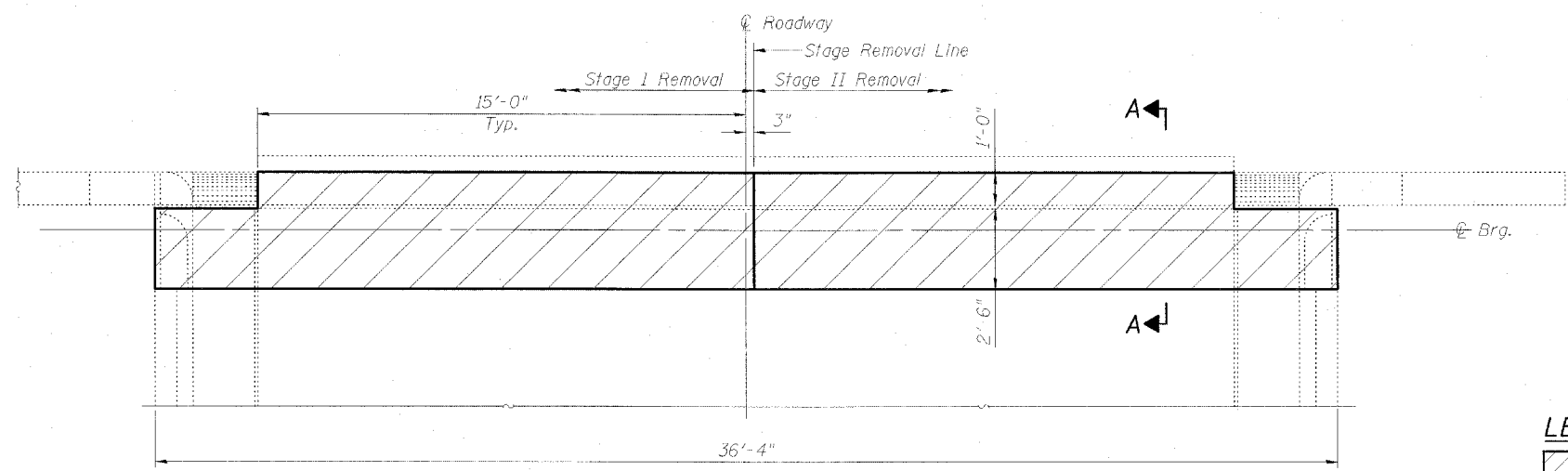


ROUTE NO.	SECTION	COUNTY	TOTAL SHEETS	SHEET NO.
F.A.P. RT. 308		ROCK ISLAND	40	23
FED. ROAD DIST. NO. 7	BILLINGS	FED. AID PROJECT		

SHEET NO. SHEETS

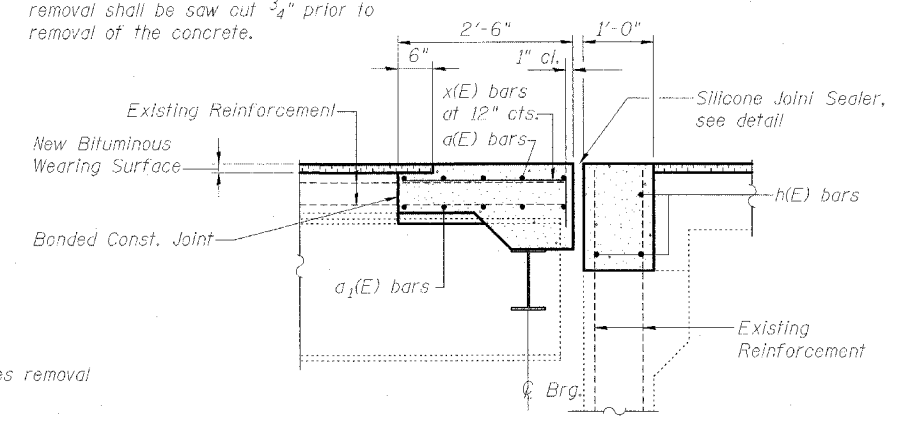
Contract #64816

Perimeters of concrete and bituminous removal shall be saw cut 3/4" prior to removal of the concrete.

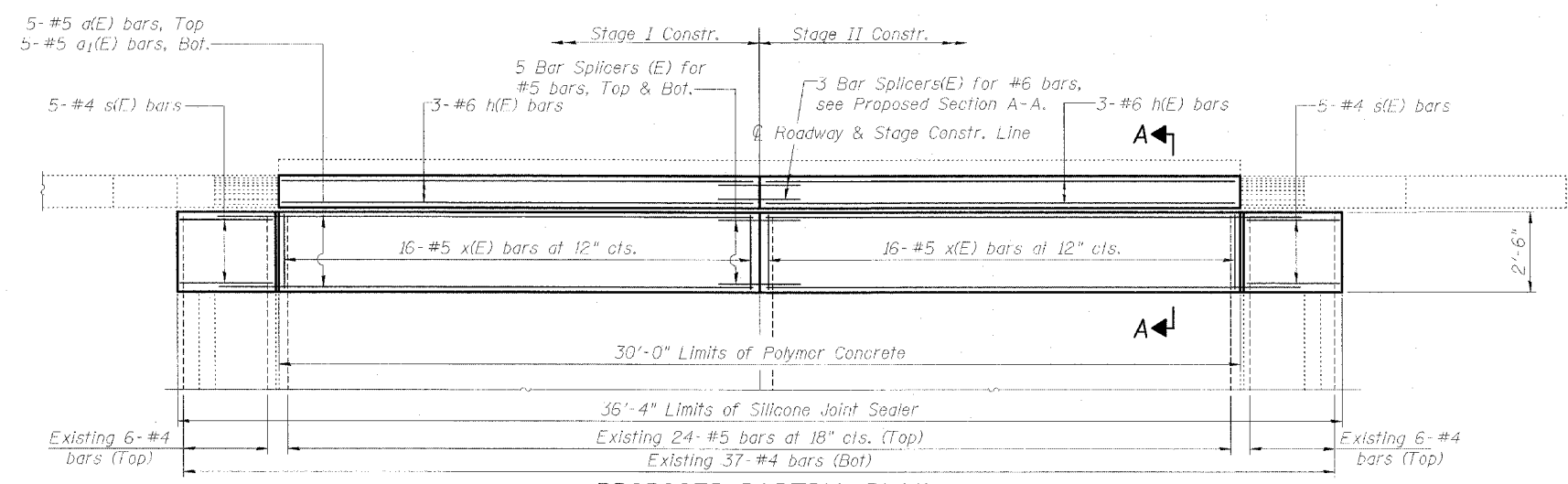


EXISTING PARTIAL PLAN
081-0091 Looking South
081-0092 Looking North

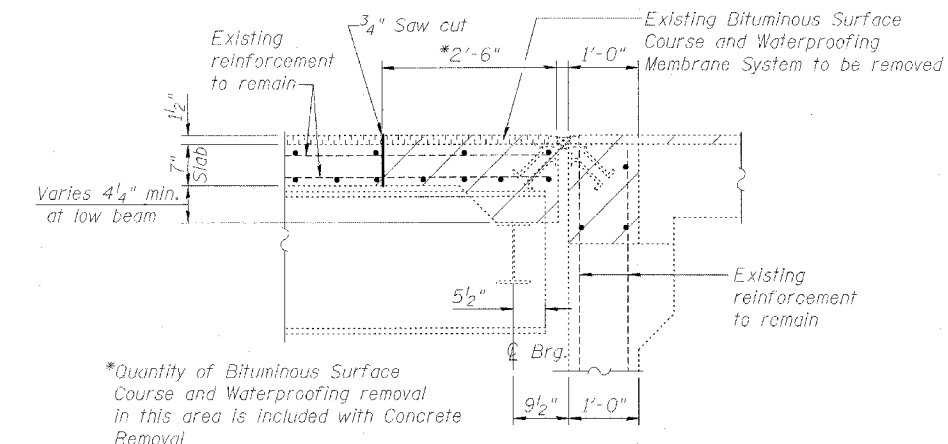
LEGEND
Hatched area indicates removal



PROPOSED SECTION A-A

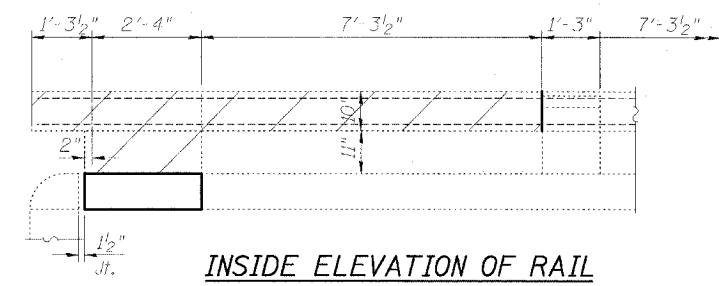


PROPOSED PARTIAL PLAN
081-0091 Looking South
081-0092 Looking North

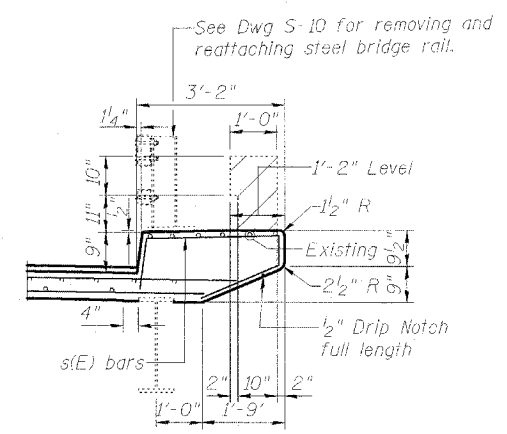


EXISTING SECTION A-A

*Quantity of Bituminous Surface Course and Waterproofing removal in this area is included with Concrete Removal

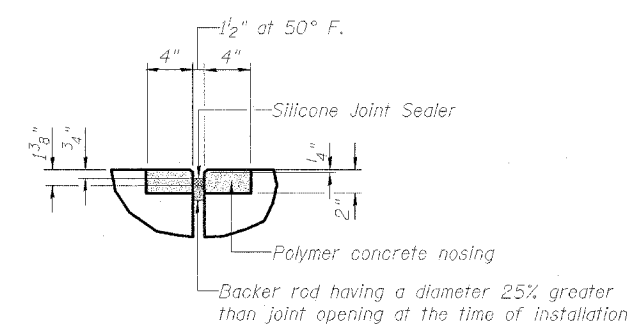


INSIDE ELEVATION OF RAIL

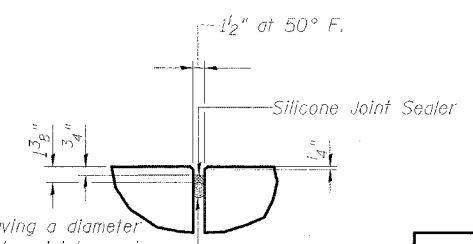


SECTION B-B

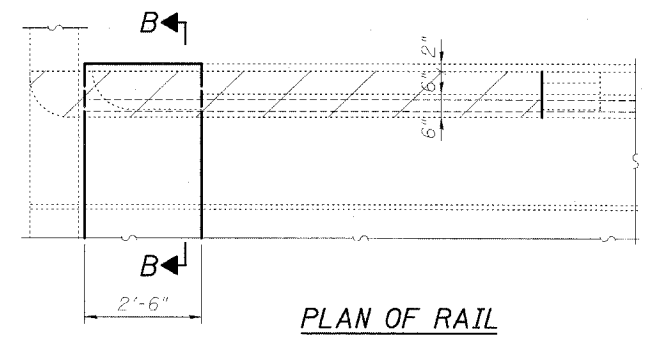
NOTES:
1. Existing reinforcement bars shown are to be cleaned and incorporated into new construction.



SILICONE JOINT SEALER DETAIL



SILICONE JOINT SEALER DETAIL AT CURB FACE AND ACROSS SAFETY WALK



PLAN OF RAIL

SUPERSTRUCTURE DETAILS

F.A.P. RT. 308
OVER MILL CREEK
ROCK ISLAND COUNTY
STATION 550+90.00
STRUCTURE NO. 081-0091 & 92



CHAMPAIGN, ILLINOIS
CHICAGO, ILLINOIS
EVANSVILLE, INDIANA
INDIANAPOLIS, INDIANA
KENSHA, WISCONSIN
SPRING GREEN, WISCONSIN

REVISIONS	
NAME	DATE

DESIGNED BY: M.M.	PROJECT NO: 182315	DRAWING NUMBER S-4
DRAWN BY: M.E.W.	DATE: 3/05	
CHECKED BY: M.M.		
APPROVED BY: S.M.M.		
ACTIVITY INITIALS		

NOTE: DIMENSIONAL DATA IS NOT TO BE OBTAINED BY SCALING ANY PORTION OF THIS DRAWING.