

ROUTE NO.	SECTION	COUNTY	TOTAL SHEETS	SHEET NO.	SHEET NO.
F.A.P. RT. 308		ROCK ISLAND	40	29	
FED. ROAD DIST. NO. 7	ILLINOIS	FED. AID PROJECT			

Contract # 64B10

NOTES

Nuts for 1" ϕ threaded anchor rods connecting the base plate to the concrete shall be tightened to a snug fit and given an additional $\frac{1}{8}$ turn.

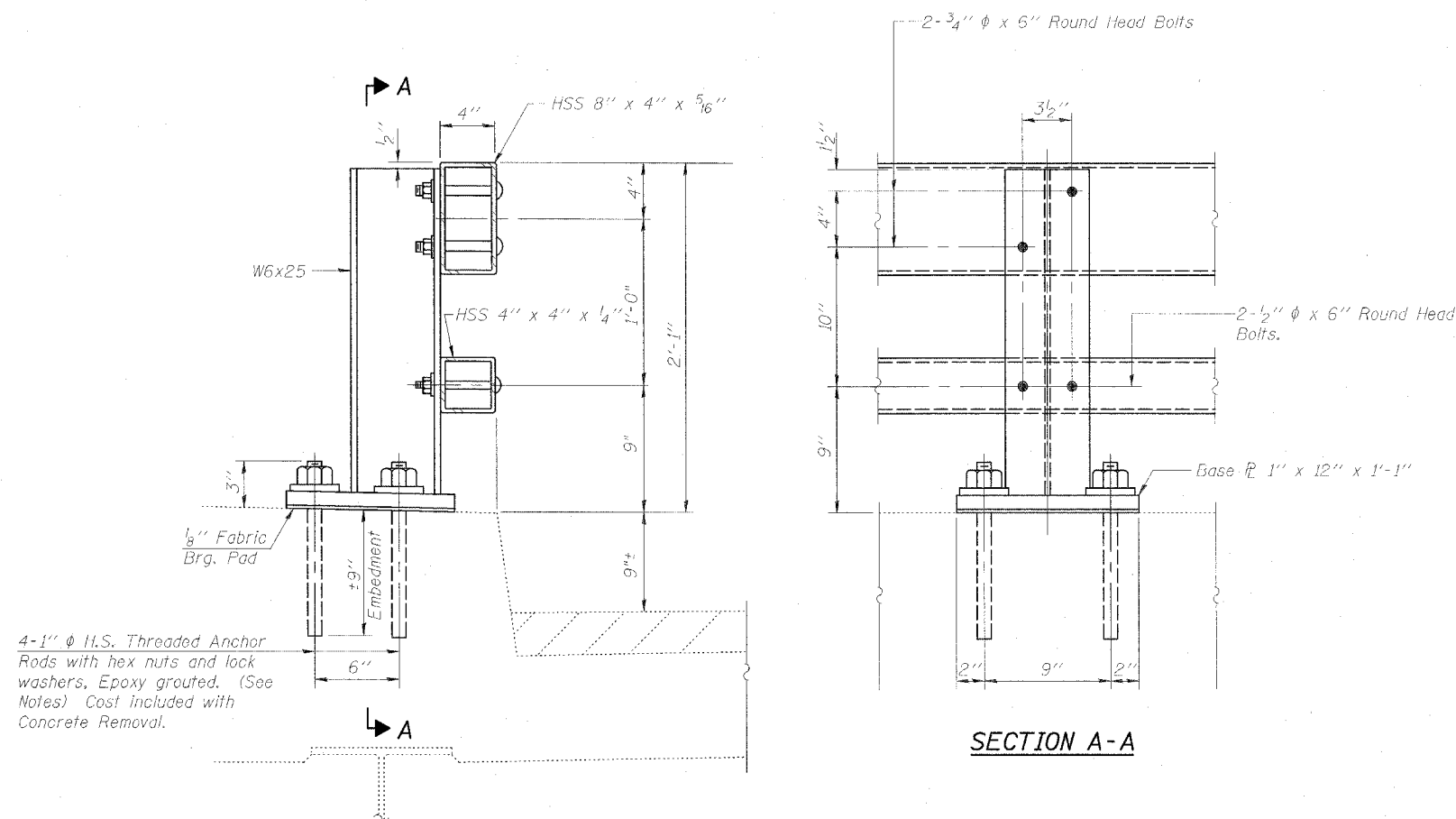
Bolts, cap screws and nuts shall conform to the requirements of ASTM designation A 307 except that threaded rods, nuts and washers shall conform to AASHTO M 164.

All bolts, nuts, cap screws, washers and lock washers shall be galvanized according to AASHTO M 232.

Anchor rods shall be galvanized after shop fabrication according to AASHTO M 111 and ASTM A 385. Galvanized rail shall not be painted.

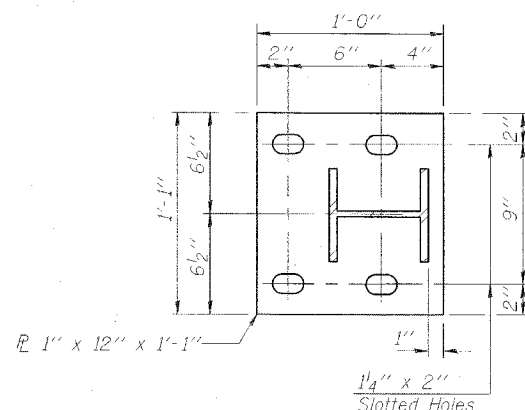
The Contractor shall use the capsule or the adhesive cartridge type anchor rods that have been previously tested and given a prior approval by the Department. The Contractor shall install these anchor rods in pre-drilled holes according to the manufacturer's recommendations and procedures.

The capsule or the adhesive cartridge shall be sealed with pre-measured amounts of the adhesive chemical.



SECTION AT RAIL POST

Remove and reinstall existing bridge rail to the extent necessary for Concrete Removal. At curb and safety walk sections with new Concrete Superstructure install new anchor rods. Cost included with Concrete Removal.



STEEL BRIDGE RAIL DETAILS

F.A.P. RT. 308
OVER MILL CREEK
ROCK ISLAND COUNTY
STATION 550+90.00
STRUCTURE NO. 081-0091 & 92



CHAMPAIGN, ILLINOIS
CHICAGO, ILLINOIS
EVANSVILLE, INDIANA
INDIANAPOLIS, INDIANA
KENOSHA, WISCONSIN
SPRING GREEN, WISCONSIN

REVISIONS	
NAME	DATE

NOTE: DIMENSIONAL DATA IS NOT TO BE OBTAINED BY SCALING ANY PORTION OF THIS DRAWING.

DESIGNED BY: M.M. PROJECT NO: 102315
DRAWN BY: MEW DATE: 3/06
CHECKED BY: M.M.
APPROVED BY: S.M.M.
ACTIVITY: DETAILS

DRAWING NUMBER

S-10