

F.A.P. RTE.	SECTION	COUNTY	TOTAL SHEETS	SHEET NO.
316	101TS	LEE	9	1

STATE OF ILLINOIS
DEPARTMENT OF TRANSPORTATION

DIVISION OF HIGHWAYS

**PROPOSED
HIGHWAY PLANS**

FAP ROUTE 316 (IL 26)
SECTION 101TS
PROJECT HS-0316(031)
LEE COUNTY

C92-110-06

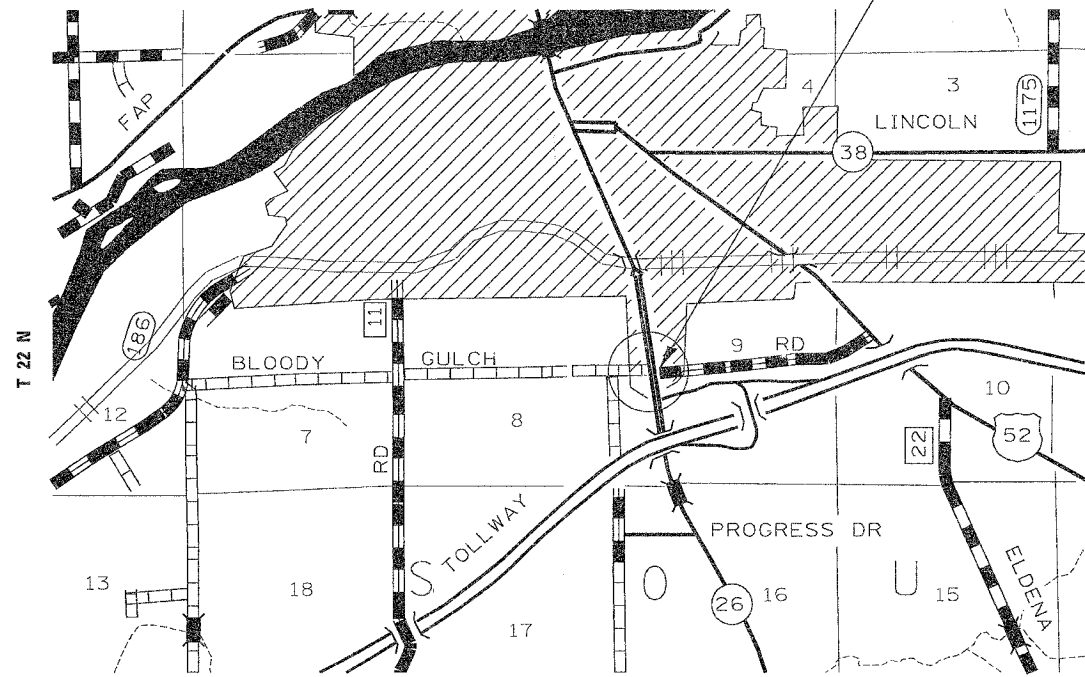
- INDEX OF SHEETS**
- 1 COVER SHEET
 - INDEX OF SHEETS
 - STANDARDS
 - 2 SUMMARY OF QUANTITIES
 - 3 UTILITIES
 - GENERAL NOTES
 - 4-5 BORING LOGS
 - 6 SIGNAL PLAN SHEET LEGEND
 - SIGN DETAILS
 - 7 PLAN SHEET
 - 8 CABLE DETAIL
 - 9 SERVICE INSTALLATION DETAIL
 - LIGHTING CONTROLLER DETAIL

STANDARDS

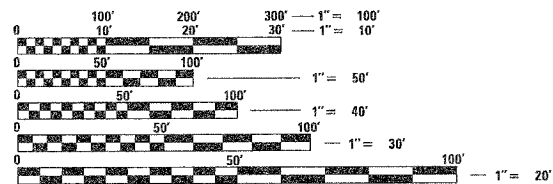
- 701006-02 OFF-ROAD OPERATIONS 2L, 2W, 4.5 m (15') TO 600 mm (24") FROM PAVEMENT EDGE
- 701201-02 LANE CLOSURE, 2L, 2W, DAY ONLY, FOR SPEEDS > 45 MPH
- 701301-02 LANE CLOSURE, 2L, 2W, SHORT TIME OPERATIONS
- 701311-02 LANE CLOSURE, 2L, 2W, MOVING OPERATIONS - DAY ONLY
- 701701-04 URBAN LANE CLOSURE MULTILANE INTERSECTION
- 702001-06 TRAFFIC CONTROL DEVICES
- 720016-01 MAST ARM MOUNTED STREET NAME SIGNS
- 805001 ELECTRICAL SERVICE INSTALLATION DETAILS
- 814001 CONCRETE HANDHOLES
- 814006 DOUBLE HANDHOLES
- 857001 STANDARD DESIGNATION DIAGRAM AND PHASE SEQUENCE
- 862001 UNINTERRUPTABLE POWER SUPPLY (UPS)
- 873001 TRAFFIC SIGNAL GROUNDING
- 877011-02 STEEL COMBINATION MAST ARM ASSEMBLY AND POLE
- 878001-04 CONCRETE FOUNDATION DETAILS
- 880006 TRAFFIC SIGNAL MOUNTING DETAILS



PROJECT LOCATION
IL 26 WITH BLOODY GULCH RD



R 9 E



FULL SIZE PLANS HAVE BEEN PREPARED USING STANDARD ENGINEERING SCALES. REDUCED SIZED PLANS WILL NOT CONFORM TO STANDARD SCALES. IN MAKING MEASUREMENTS ON REDUCED PLANS, THE ABOVE SCALES MAY BE USED.

J.U.L.I.E.
JOINT UTILITY LOCATION INFORMATION FOR EXCAVATION
1-800-892-0123

CONTRACT NO. 64C26

DESIGNER KRISTINE HILL 815-284-5476

PROJECT ENGINEER SCOTT KULLERSTRAND 815-284-5468

STATE OF ILLINOIS
DEPARTMENT OF TRANSPORTATION
DIVISION OF HIGHWAYS

SUBMITTED March 31, 2006

Gregory J. Mountz
DEPUTY DIRECTOR OF HIGHWAYS, REGION ENGINEER

May 12, 2006
Mike Vanecko
ENGINEER OF DESIGN AND ENVIRONMENT

May 12, 2006
Milton L. Sear
DIRECTOR OF HIGHWAYS, CHIEF ENGINEER

**PRINTED BY THE AUTHORITY
OF THE STATE OF ILLINOIS**