

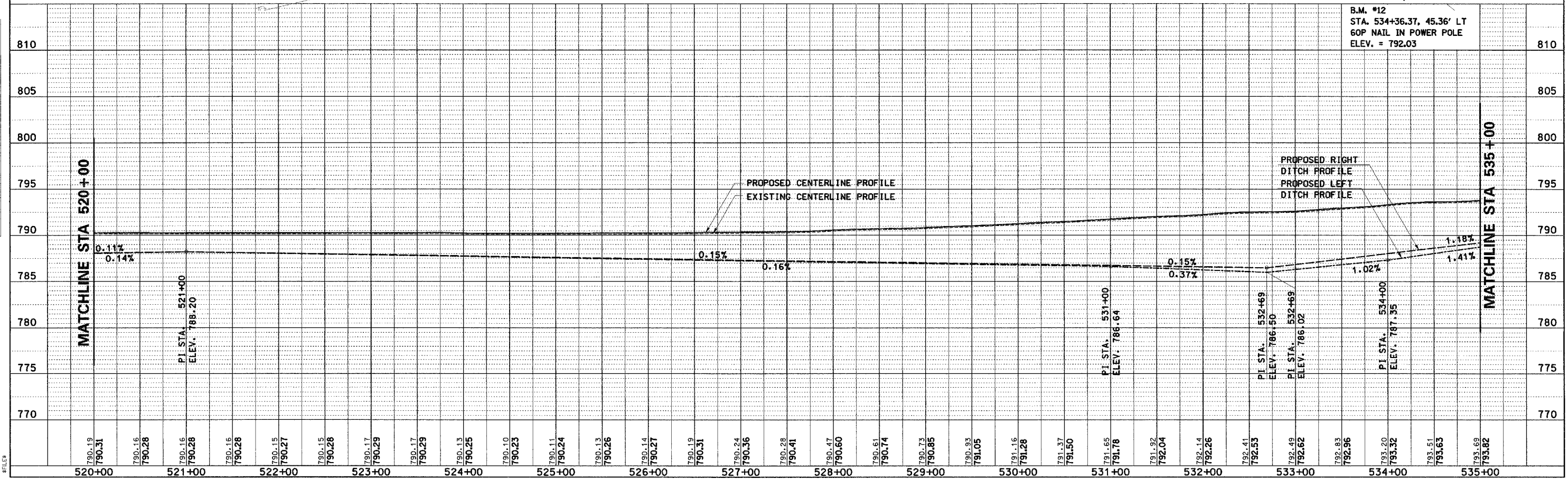
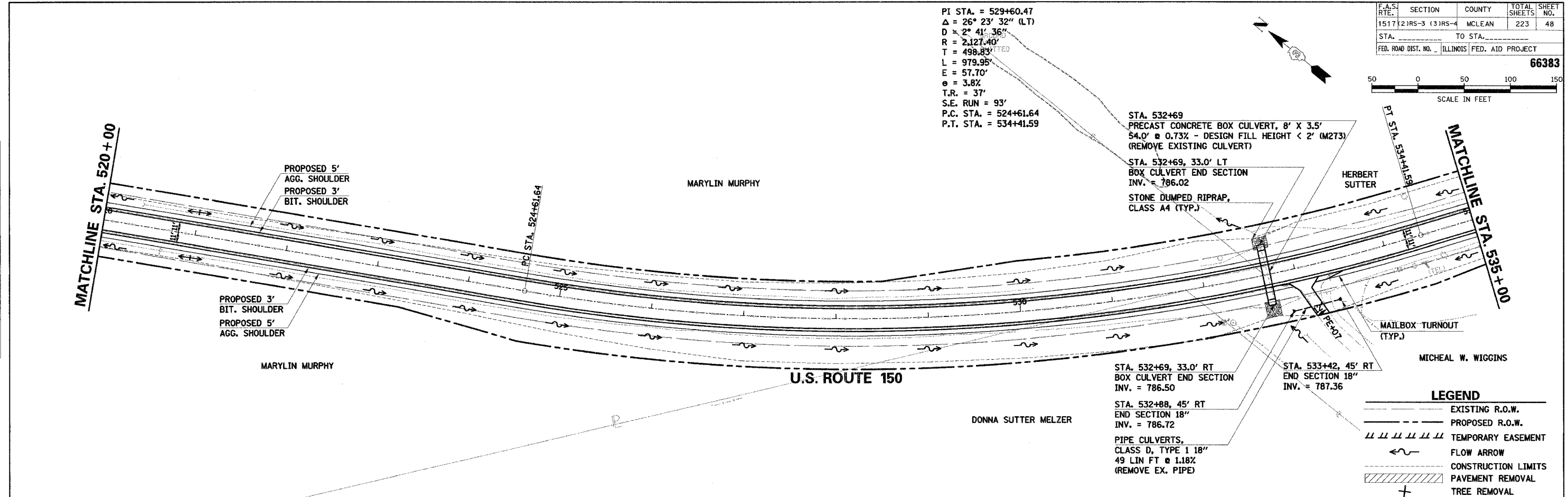
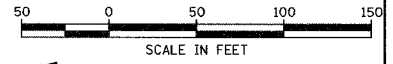
DATE	
BY	
REVIEWED	
PLAN	
NO.	
NOTE BOOK	
ALIGNED CHECKED	
FILED	
FILE NAME	

DATE	
BY	
REVIEWED	
PROFILE	
NO.	
NOTE BOOK	
GRADES CHECKED	
NOTATIONS CHECKED	

COMPANY NAME: #COMPANY NAME#  
 PROJECT CONTACT: #PROJECT CONTACT#  
 CLIENT: #CLIENT#  
 DATE: #DATE#  
 SHEET: #SHEET#

PI STA. = 529+60.47  
 $\Delta = 26^\circ 23' 32''$  (LT)  
 $D = 2^\circ 41' 36''$   
 $R = 2,127.40'$   
 $T = 498.83'$   
 $L = 979.95'$   
 $E = 57.70'$   
 $\theta = 3.8\%$   
 $T.R. = 37'$   
 $S.E. RUN = 93'$   
 $P.C. STA. = 524+61.64$   
 $P.T. STA. = 534+41.59$

F.A.S. RTE.	SECTION	COUNTY	TOTAL SHEETS	SHEET NO.
1517	(2)RS-3 (3)RS-4	MCLEAN	223	48
STA.	TO STA.			
FED. ROAD DIST. NO. - ILLINOIS FED. AID PROJECT				
<b>66383</b>				



U.S. ROUTE 150 STA. 520+00 TO STA. 535+00 - PLAN AND PROFILE