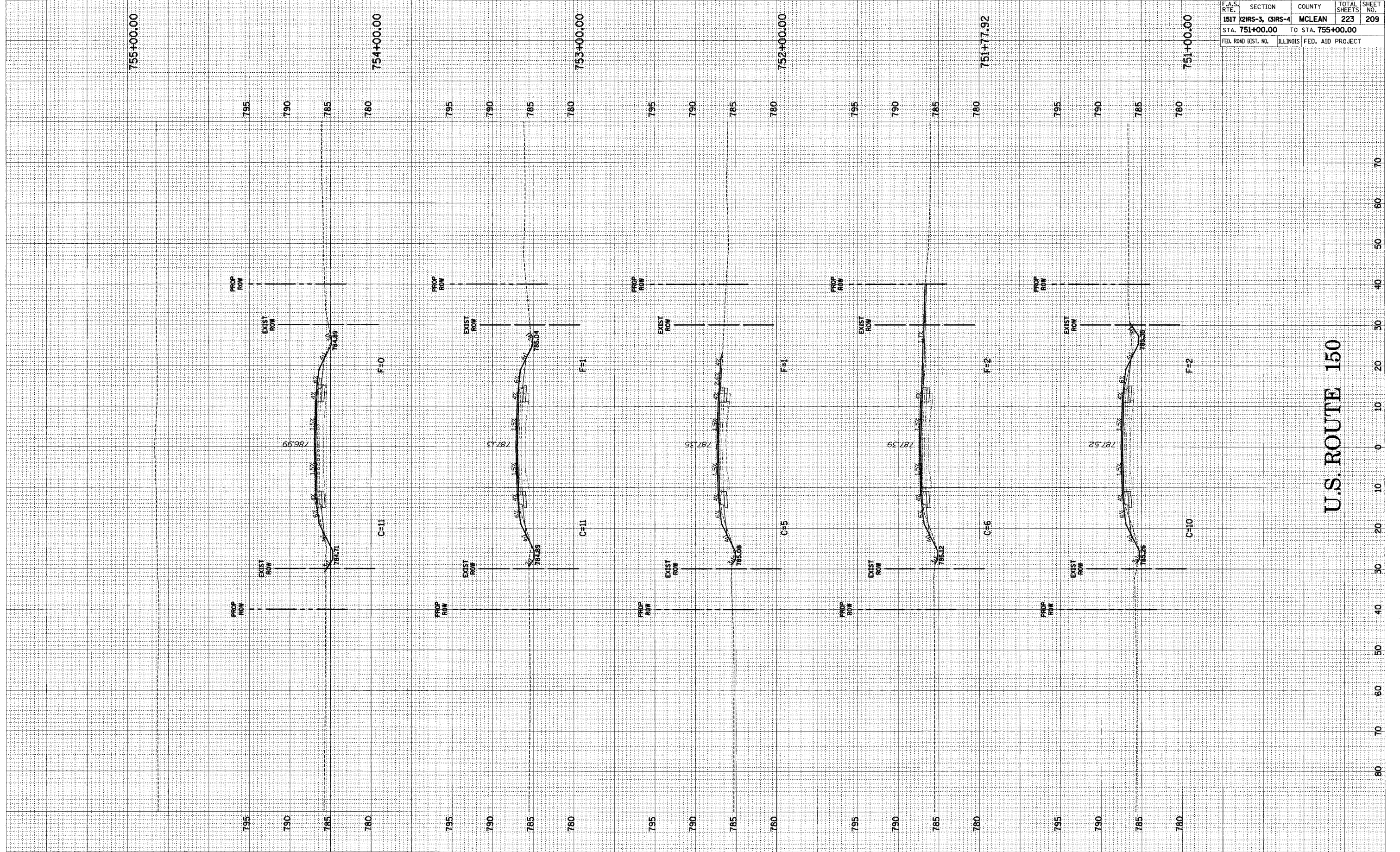


FINAL SURVEY	SURVEYED	BY	DATE
NOTE BOOK NO.	PLOTTED		
	AREAS CHECKED		

ORIGINAL SURVEY	SURVEYED	BY	DATE
NOTE BOOK NO.	PLOTTED		
	AREAS CHECKED		

F.A.S. RTE.	SECTION	COUNTY	TOTAL SHEETS	SHEET NO.
1517	(2)RS-3, (3)RS-4	MCLEAN	223	209
STA. 751+00.00		TO STA. 755+00.00		
FED. ROAD DIST. NO.	ILLINOIS	FED. AID PROJECT		



U.S. ROUTE 150

U.S. ROUTE 150 CROSS-SECTIONS STA. 751+00.00 TO STA. 755+00.00