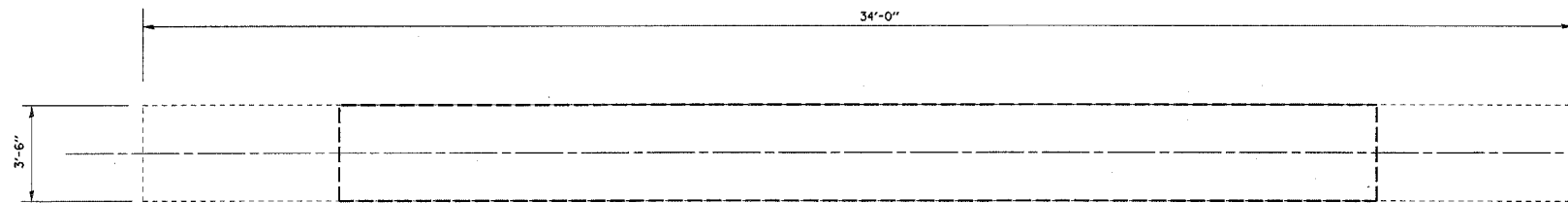


F. A. L. DIST.	SECTION	COUNTY	TOTAL SHEETS	SHEET NO.
74	*	**	28	9
STA.		TO STA.		
FED. ROAD DIST. NO.	MILES	FED. AID PROJECT		

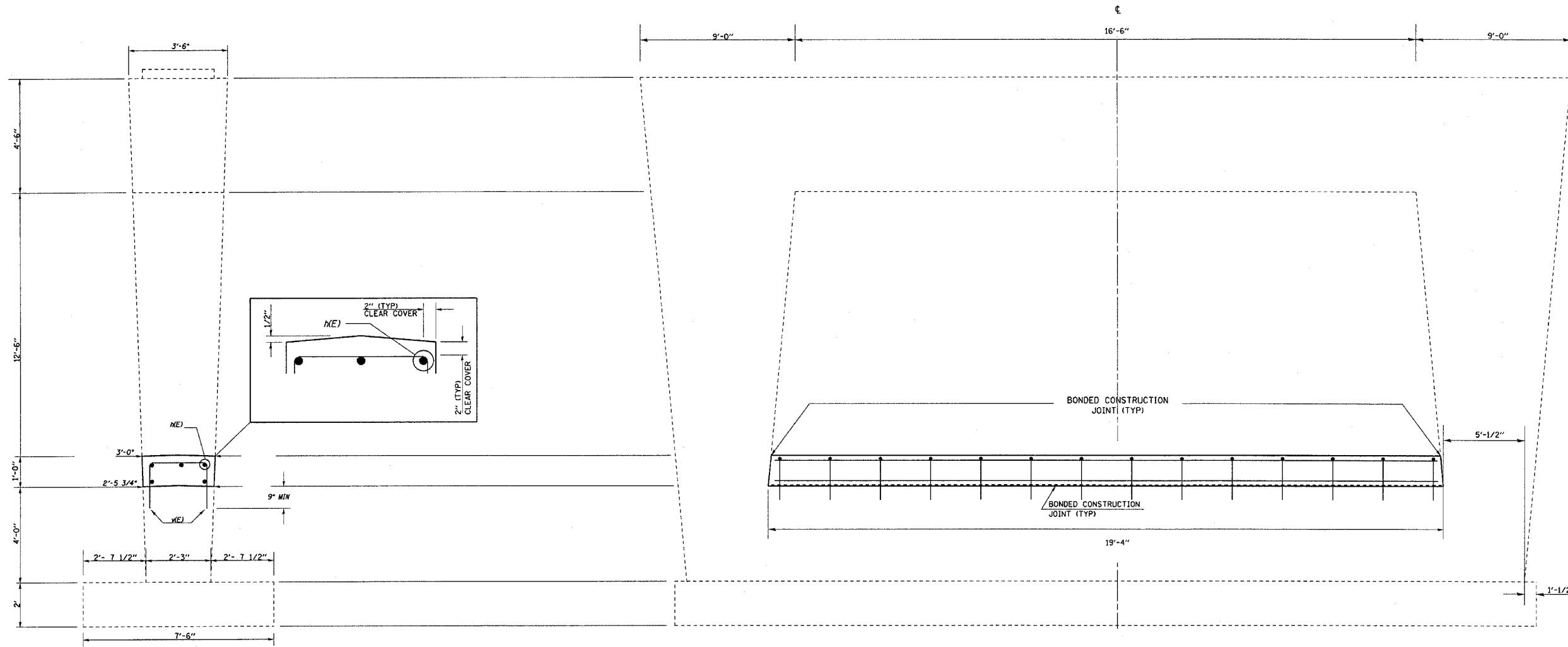
* D3 INTERSTATE SAFETY 2007-2
 ** FORD, IROQUOIS, KANKAKEE



NOTE:
 1.) DRILL & EPOXY GROUT V(E) BARS IN 9" (MIN) DRILLED HOLES ACCORDING TO SECTION 584 OF THE STANDARD SPECIFICATIONS.
 2.) USE EXISTING PLANS INCLUDED TO AVOID DAMAGING LONGITUDINAL REINFORCEMENT IN THE EXISTING CRASHWALL WHILE DRILLING & EPOXY GROUTING V(E) BARS.



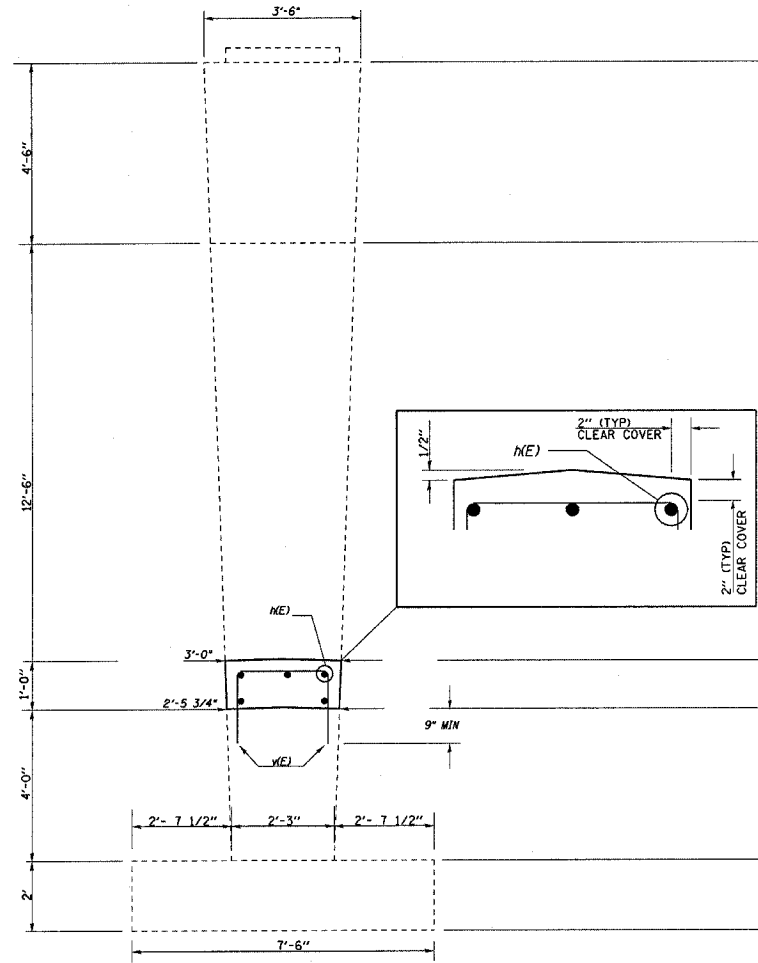
TOP PLAN



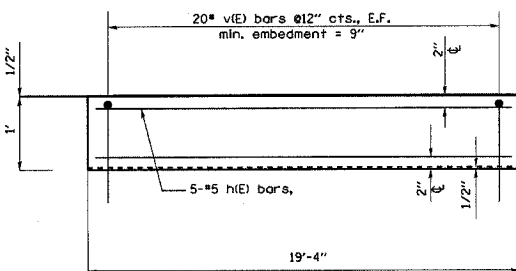
ELEVATION
LOOKING EAST

DESIGN STRESSES (NEW)

fc = 3,500 psi
 FY = 60,000 PSI (REINFORCEMENT)



END ELEVATION



CRASH WALL DETAIL

BILL OF MATERIAL

Bar	No.	Size	Length	Shape
h(E)	5	#5	19'	—
v(E)	40	#5	3'-10"	└
Item	Unit	Quantity		
Concrete Structures	Cu. Yds.	2.0		
Reinforcement Bars, Epoxy Coated	Pound	260		



4/3/2006 c:\pro\jects\view\ed02706\66638\detail is.dgn

FAI RTE 57
 SEC D3 INTERSTATE SAFETY 2007-2
 IROQUOIS CO / STA 1566+22.01
 SN 038-0077 MEDIAN

PIER CRASH WALL EXTENSION