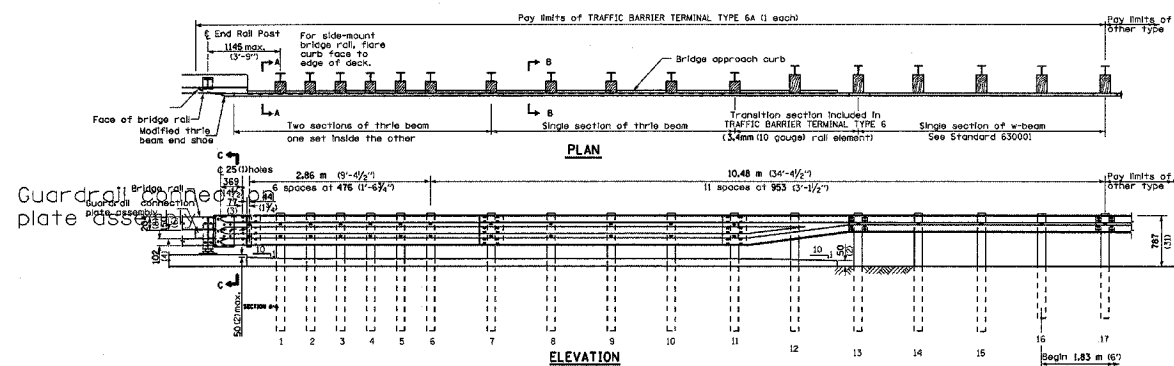
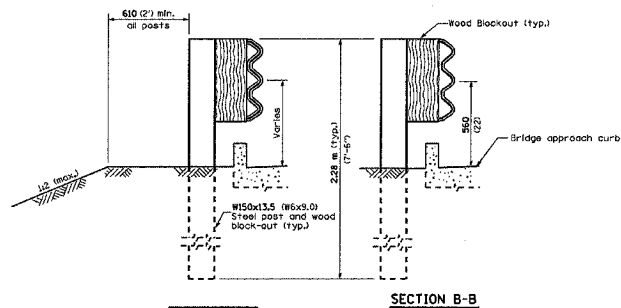


F. A. L. No.	SECTION	COUNTY	TOTAL SHEETS	SHEET NO.
74	*	**	28	28
STA.		TO STA.		
FED. ROAD DIST. NO.		BLINDS		FED. AID PROJECT

D3 INTERSTATE SAFETY 2007-2  
FORD, IROQUOIS, KANKAKEE



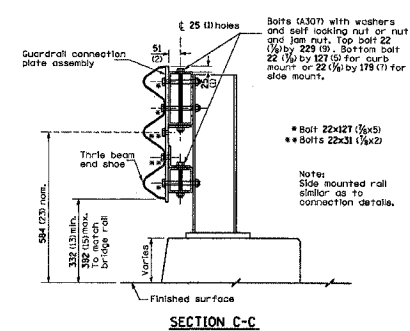
Guardrail connection plate assembly



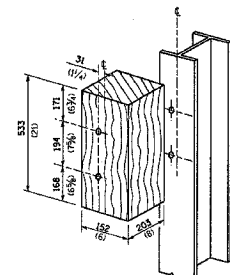
GENERAL NOTES

This standard shows attachment to curb mounted bridge roll. Attachment to side mounted bridge roll is similar. See Standard 63000 for details of guardrail not shown. Thrie beam roll shall be bolted to block-out at all posts. See Standard 42040 for details of bridge approach pavement. All slope ratios are expressed as units of vertical displacement to units of horizontal displacement. All dimensions are in millimeters (inches) unless otherwise shown.

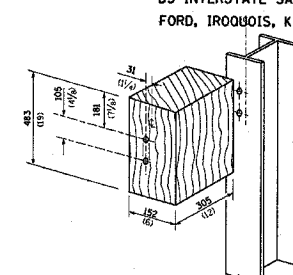
Sheet 1 of 3



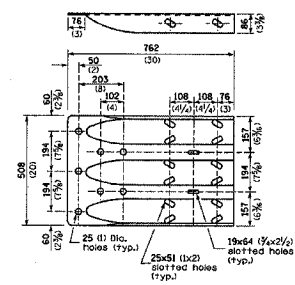
SECTION C-C



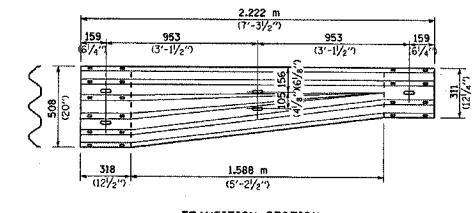
POSTS 1-11 WOOD BLOCKOUT DETAIL



POST 12 WOOD BLOCKOUT DETAIL

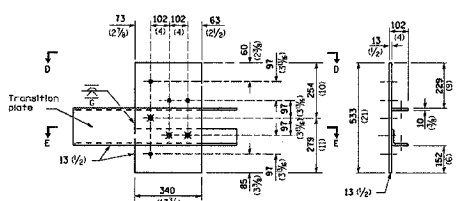


MODIFIED THRIE BEAM END SHOE DETAIL



TRANSITION SECTION

Sheet 2 of 3

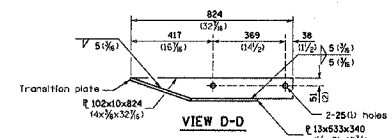


GUARDRAIL CONNECTION PLATE ASSEMBLY DETAILS

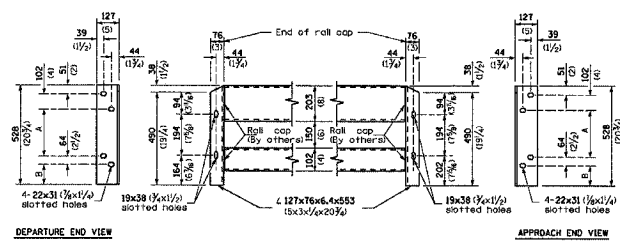
• 4-25 (1) holes for 22 1/2 H.S. bolts and nuts  
• D-W and top 3 holes for 22 1/2 H.S. bolts.

LEGEND

Dimensions	A	B
For Curb Mounted Roll	222 (8 3/4)	89 (3 1/2)
For Side Mounted Roll	247 (9 3/4)	64 (2 1/2)

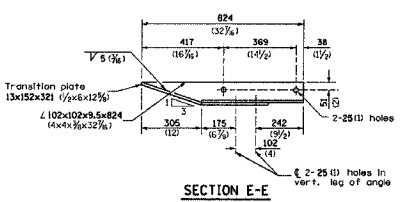


VIEW D-D



CONNECTION ANGLES

Install angles to roll caps using 19 (3/4) washers and self-locking nuts or nuts and jam nuts, to be provided by others.



SECTION E-E

TRAFFIC BARRIER  
TERMINAL, TYPE 6A  
DETAIL

Sheet 3 of 3