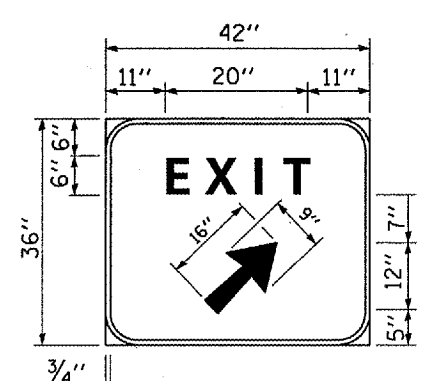
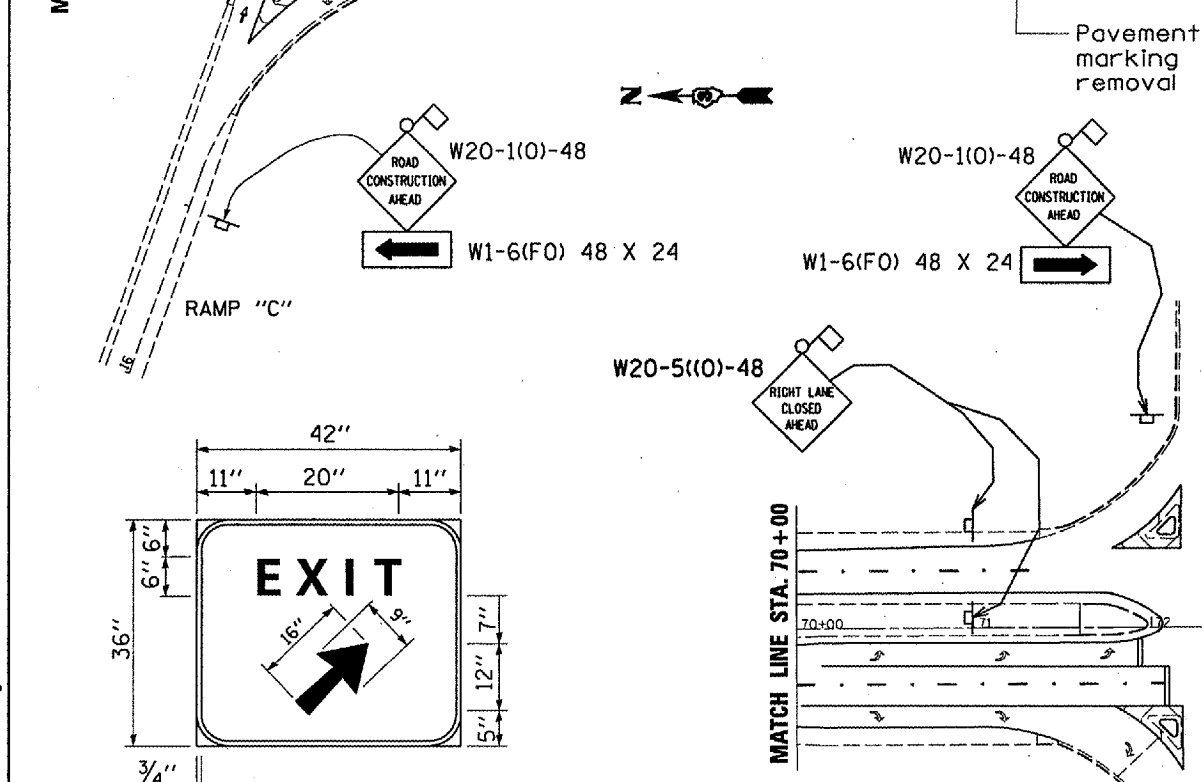
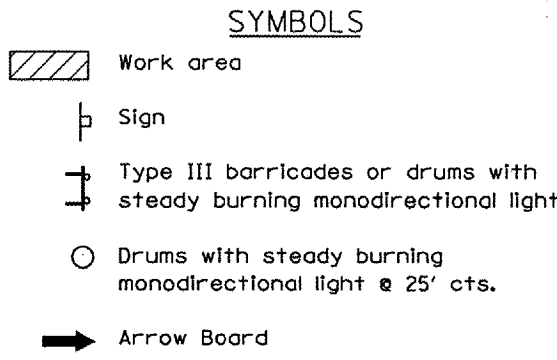
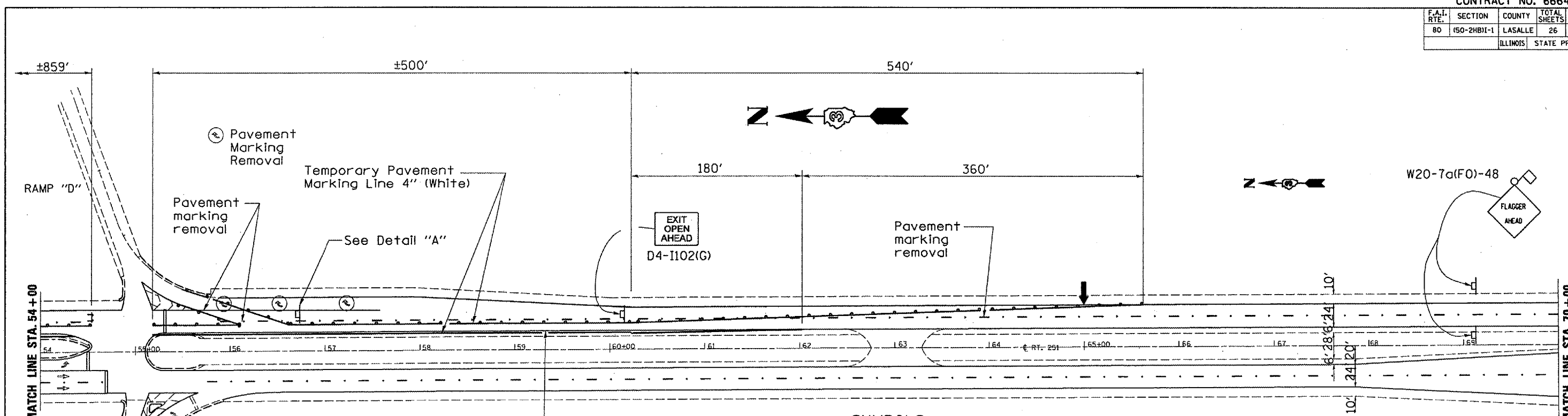
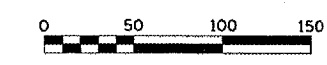
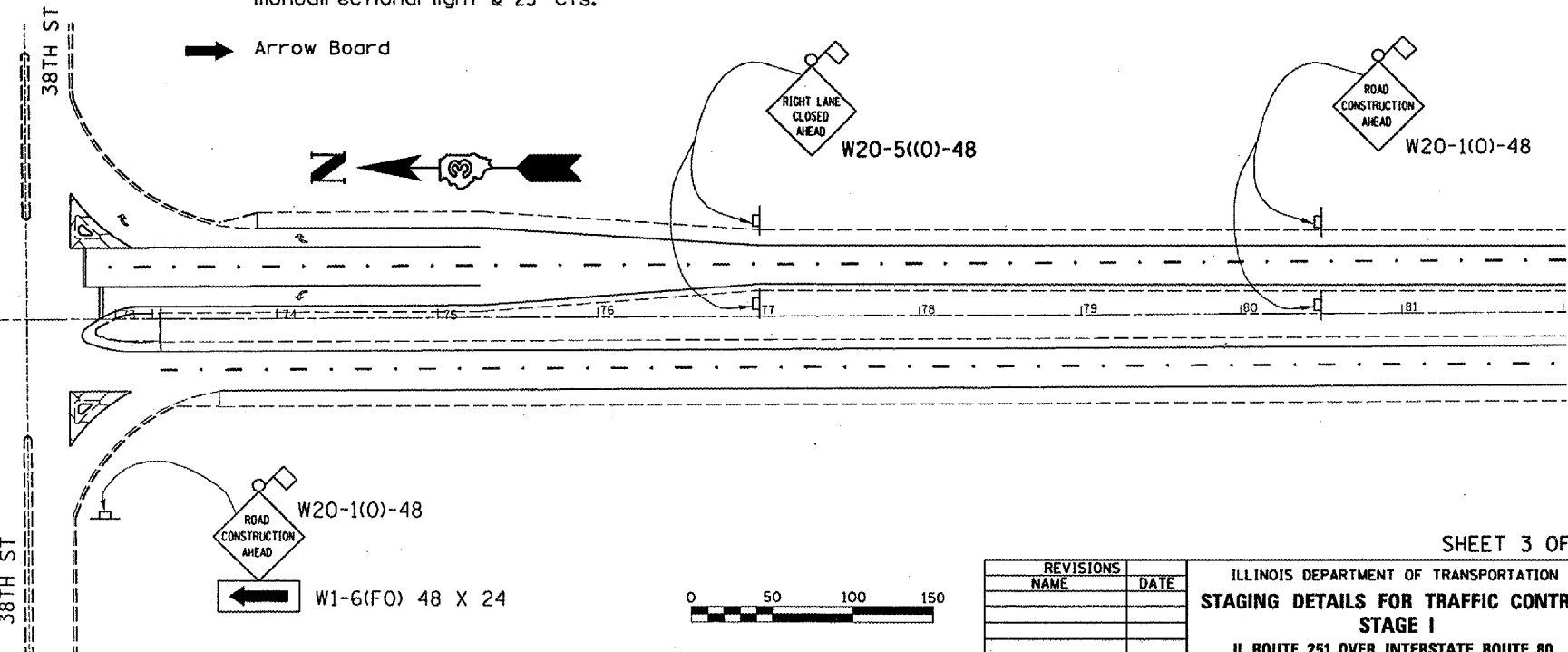


F.A.I. RTE.	SECTION	COUNTY	TOTAL SHEETS	SHEET NO.
80	(50-2HB)I-1	LASALLE	26	21
ILLINOIS			STATE PROJECT	



Background - Green
 Border and legend - White
 "D" size letters

EXIT SIGN - SPECIAL
DETAIL A



NOTE: Use this sheet with Traffic Control and Protection Standard 701601

DATE: 01/17/2006
 c:\projects\cm305\details.dgn

REVISIONS	DATE

SHEET 3 OF 3

ILLINOIS DEPARTMENT OF TRANSPORTATION
**STAGING DETAILS FOR TRAFFIC CONTROL
 STAGE I**
 IL ROUTE 251 OVER INTERSTATE ROUTE 80
 F.A.I. ROUTE 80 SECTION (50-2HB)I-1
 LASALLE COUNTY
 STATION 569+41.10

DATE 01/17/2006 DRAWN BY RLW