

F.A.I. RTE.	SECTION	COUNTY	TOTAL SHEETS	SHEET NO.
80	(50-2HB)I-1	LASALLE	26	1
ILLINOIS			STATE PROJECT	

**INDEX OF SHEETS**

1. COVER SHEET
2. GENERAL NOTES
3. SUMMARY OF QUANTITIES
4. SCHEDULES SN 050-0078 NB
5. SCHEDULES SN 050-0077 SB
6. GENERAL PLAN AND ELEVATION
7. TYPICAL SECTIONS
8. BRIDGE JOINT DETAILS
9. MISCELLANEOUS DETAILS
- 10 - 11. PARAPET REPAIR DETAILS
11. PARAPET REPAIR DETAILS
12. PIER REPAIR DETAILS - PIER #1 - S.N. 050-0078 NBL
13. PIER REPAIR DETAILS - PIER #2 - S.N. 050-0078 NBL
14. PIER REPAIR DETAILS - PIER #3 - S.N. 050-0078 NBL
15. PIER REPAIR DETAILS - PIER #1 - S.N. 050-0077 SBL
16. PIER REPAIR DETAILS - PIER #2 - S.N. 050-0077 SBL
17. PIER REPAIR DETAILS - PIER #3 - S.N. 050-0077 SBL
18. FRAMING PLAN - TEMPORARY SHORING & CRIBBING
- 19 - 21. STAGING DETAILS - STAGE I
- 22 - 24. STAGING DETAILS - STAGE II
25. WIDTH RESTRICTION SIGNING DETAILS
26. PAVEMENT MARKING DETAILS

**STANDARDS**

- |           |                                                                               |
|-----------|-------------------------------------------------------------------------------|
| 000001-04 | STANDARD SYMBOLS, ABBREVIATIONS AND PATTERNS                                  |
| 001001    | AREAS OF REINFORCEMENT BARS                                                   |
| 001006    | DECIMAL OF AN INCH AND OF A FOOT                                              |
| 701001-01 | OFF-ROAD OPERATIONS 2L, 2W, MORE THAN 4.5 m (15') AWAY                        |
| 701006-02 | OFF-ROAD OPERATIONS 2L, 2W, 4.5 m (15') TO 600 mm (24") FROM PAVEMENT EDGE    |
| 701011-01 | OFF-ROAD MOVING OPERATIONS 2L, 2W, DAY ONLY                                   |
| 701101-01 | OFF-ROAD OPERATIONS MULTILANE, 4.5 m (15') TO 600 mm (24") FROM PAVEMENT EDGE |
| 701106-01 | OFF-ROAD OPERATIONS, MULTILANE, MORE THAN 4.5 m (15') AWAY                    |
| 701400-02 | APPROACH TO LANE CLOSURE, FREEWAY/EXPRESSWAY                                  |
| 701401-03 | LANE CLOSURE, FREEWAY/EXPRESSWAY                                              |
| 701411-03 | LANE CLOSURE, MULTILANE, AT ENTRANCE OR EXIT RAMP FOR SPEEDS P 45 MPH         |
| 701601-04 | URBAN LANE CLOSURE, MULTILANE, 1W OR 2W WITH NONTRANSVERSABLE MEDIAN          |
| 702001-06 | TRAFFIC CONTROL DEVICES                                                       |

MICROFILMED \_\_\_\_\_  
 REEL NUMBER \_\_\_\_\_  
 AWARDED \_\_\_\_\_  
 RESIDENT ENGINEER \_\_\_\_\_  
 AS BUILT CHANGES WERE MADE  
 ON THE FOLLOWING SHEETS \_\_\_\_\_

JULIE 1-800-892-0123

DISTRICT 3 NO. (815) 434-6131

PROJECT ENGINEER: DAVE BROVIK (815)434-8435

UNIT CHIEF: RON WOODSHANK (815) 434-8419

TOWNSHIP: PERU

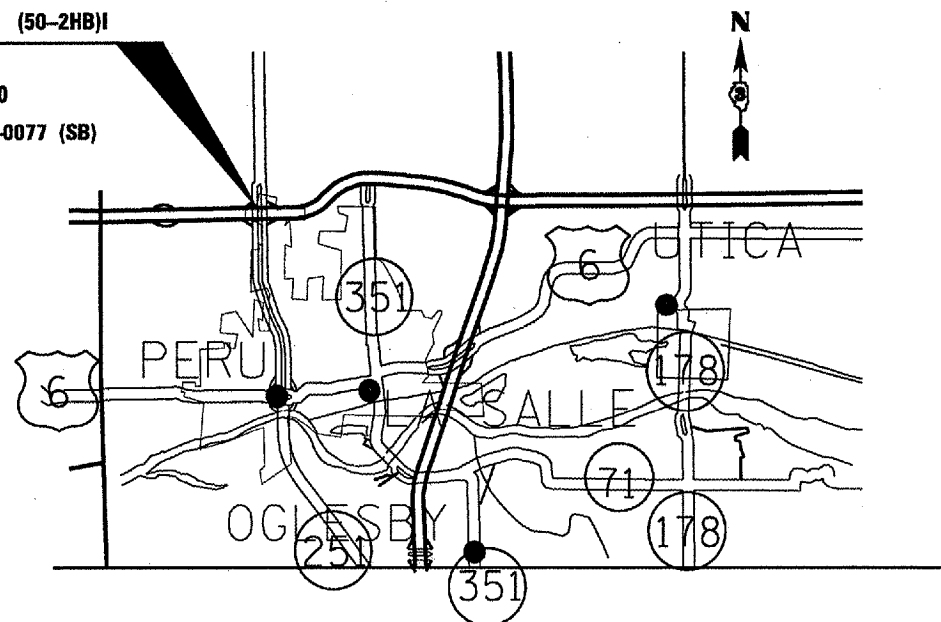
CONTRACT NO. 66648

**STATE OF ILLINOIS**  
**DEPARTMENT OF TRANSPORTATION**  
**DIVISION OF HIGHWAYS**  
**PROPOSED**  
**HIGHWAY PLANS**

**FAI ROUTE 80 (INTERSTATE 80)**  
**SECTION (50-2HB)I-1**

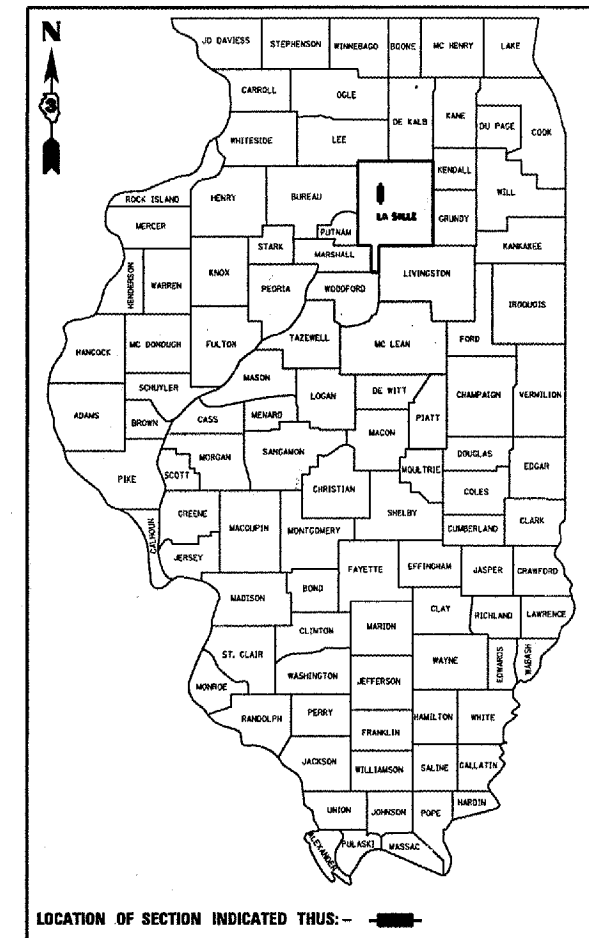
**LASALLE COUNTY**  
**C-93-066-06**  
**BRIDGE REPAIR**

F.A.I. ROUTE 80 SECTION (50-2HB)I  
 LASALLE COUNTY  
 STATION 569+41.10  
 SN 050-0078 (NB) SN 050-0077 (SB)



GROSS LENGTH OF PROJECT = NB: 238 FEET 0.05 MI  
 SB: 238 FEET 0.05 MI

NET LENGTH OF PROJECT = NB: 238 FEET 0.05 MI  
 SB: 238 FEET 0.05 MI



**FUNCTIONAL CLASSIFICATION**  
 URBAN: INTERSTATE  
 FAI ROUTE 80  
 2003 ADT = 23950  
 P.V. = 63.3% M.U. = 32.4% S.U. = 4.4%

**FUNCTIONAL CLASSIFICATION**  
 URBAN: MAJOR COLLECTOR  
 FA2 ROUTE 250 (IL 251)  
 2003 ADT = 14100  
 P.V. = 92.2% M.U. = 3.9% S.U. = 3.9%

STATE OF ILLINOIS  
 DEPARTMENT OF TRANSPORTATION  
 DIVISION OF HIGHWAYS

SUBMITTED March 30, 06  
Gregory Manton  
 DEPUTY DIRECTOR OF HIGHWAYS, REGION ENGINEER

May 2, 06  
Mike Hene  
 ENGINEER OF DESIGN AND ENVIRONMENT

May 12, 06  
Milton P. Sees  
 DIRECTOR OF HIGHWAYS, CHIEF ENGINEER

**PRINTED BY THE AUTHORITY**  
**OF THE STATE OF ILLINOIS**

F.A.I. RTE.	SECTION	COUNTY	TOTAL SHEETS	SHEET NO.
80	(50-2HB)1-1	LASALLE	26	2
ILLINOIS			STATE PROJECT	

**GENERAL NOTES**

PLAN DIMENSIONS AND DETAILS RELATIVE TO THE EXISTING STRUCTURE HAVE BEEN TAKEN FROM EXISTING PLANS AND ARE SUBJECT TO NOMINAL CONSTRUCTION VARIATIONS. IT SHALL BE THE CONTRACTOR'S RESPONSIBILITY TO VERIFY SUCH DIMENSIONS AND DETAILS IN THE FIELD AND TO MAKE NECESSARY APPROVED ADJUSTMENTS PRIOR TO CONSTRUCTION OR ORDERING OF MATERIALS. SUCH VARIATIONS SHALL NOT BE CAUSE FOR ADDITIONAL COMPENSATION FOR A CHANGE IN THE SCOPE OF THE WORK, HOWEVER, THE CONTRACTOR WILL BE PAID FOR THE QUANTITY ACTUALLY FURNISHED AT THE UNIT BID FOR THE WORK.

FOR STABILIZATION, ALL TYPE III BARRICADES SHALL REQUIRE A MINIMUM OF FOUR SAND BAGS PER BARRICADE.

THE CONTRACTOR SHALL BE RESPONSIBLE FOR PROTECTING UTILITY PROPERTY FROM CONSTRUCTION OPERATIONS AS OUTLINED IN ARTICLE 107.31 OF THE STANDARD SPECIFICATIONS. THE "JULIE" NUMBER IS 1-800-892-0123. A MINIMUM OF FORTY-EIGHT (48) HOURS ADVANCE NOTICE IS REQUIRED.

THE COST OF ANY SAW CUTS MADE TO COMPLETE THE WORK AS DESCRIBED IN PLAN DETAILS, UNLESS OTHERWISE NOTED SHALL NOT BE PAID FOR SEPARATELY BUT SHALL BE INCLUDED WITH THE VARIOUS PAY REMOVAL PAY ITEMS INVOLVED.

WHERE SECTION OR SUBSECTION MONUMENTS ARE ENCOUNTERED, THE ENGINEER SHALL BE NOTIFIED BEFORE SUCH MONUMENTS ARE REMOVED. THE CONTRACTOR SHALL PROTECT AND CAREFULLY PRESERVE ALL MONUMENTS UNTIL AN AUTHORIZED SURVEYOR OR AGENT HAS WITNESSED OR OTHERWISE REFERENCED THEIR LOCATION. THE CONTRACTOR SHALL BE RESPONSIBLE FOR HAVING AN AUTHORIZED SURVEYOR REESTABLISH ANY SECTION OR SUBSECTION MONUMENTS DESTROYED BY HIS OPERATIONS.

THE THICKNESS OF BITUMINOUS MIXTURES SHOWN ON THE PLANS IS THE NOMINAL THICKNESS. DEVIATIONS FROM THE NOMINAL THICKNESS WILL BE PERMITTED WHEN SUCH DEVIATIONS OCCUR DUE TO IRREGULARITIES IN THE EXISTING SURFACE OR BASE ON WHICH THE BITUMINOUS MIXTURE IS PLACED.

THE ENGINEER WILL BE THE SOLE JUDGE CONCERNING CURING TIME FOR THE VARIOUS BITUMINOUS LIFTS.

ANY REFERENCE TO A STANDARD IN THESE PLANS SHALL BE INTERPRETED TO MEAN THE EDITION AS INDICATED BY THE SUBNUMBER LISTED ON THE INDEX OF SHEETS OR THE COPY OF THE STANDARD INCLUDED IN THESE PLANS.

ALL NEW REINFORCEMENT BARS SHALL BE "EPOXY COATED"

EXISTING REINFORCEMENT BARS EXTENDING INTO REMOVAL AREA SHALL BE CLEANED, STRAIGHTENED AND INCORPORATED INTO THE NEW CONSTRUCTION. ANY REINFORCEMENT BARS THAT ARE DAMAGED DURING CONCRETE REMOVAL SHALL BE REPLACED WITH AN APPROVED BAR SPLICER OR ANCHORAGE SYSTEM. COST INCLUDED WITH CONCRETE REMOVAL.

AN ESTIMATED QUANTITY OF "DECK SLAB REPAIR (PARTIAL)" HAS BEEN INCLUDED IN THE PLANS. THE ENGINEER SHALL SOUND THE ENTIRE DECK AREA AFTER THE BITUMINOUS SURFACE HAS BEEN REMOVED AND EXACT LOCATIONS AND QUANTITIES OF "DECK SLAB REPAIR (PARTIAL)" SHALL BE MARKED ON THE "AS-BUILT" PLANS.

THE FOLLOWING RATES OF APPLICATION HAVE BEEN USED IN CALCULATING PLAN QUANTITIES:

BITUMINOUS RESURFACING	112	LBS / SQ YD / IN
------------------------	-----	------------------

	SUPERPAVE SURFACE FOR 1st LIFT (3/4")	SUPERPAVE SURFACE FOR 2nd LIFT (1 1/2")
PG GRADE	PG64-22	PG64-22
MAX % RAP ALLOWABLE	10%	10%
DESIGN AIR VOIDS	4.0% e N70	4.0% e N70
MIXTURE COMPOSITION	IL 9.5	IL 12.5 or IL 9.5
FRICTION AGGREGATE	MIXTURE D	MIXTURE D
PLANT CONTROL LIMITS	CLASS I	CLASS I
DENSITY CONTROL METHOD	SATISFACTION OF THE ENGINEER	SATISFACTION OF THE ENGINEER

••IF RAP OPTION IS SELECTED, THE ASPHALT CEMENT GRADE MAY NEED TO BE ADJUSTED. THIS WILL BE DETERMINED BY THE ENGINEER.

PREPARED BY: *Paul Paul*  
DISTRICT STUDIES & PLANS ENGINEER

DATE: 3/30/06

EXAMINED BY: *Herb...*  
DISTRICT CONSTRUCTION ENGINEER

*Kenneth...*  
DISTRICT MATERIALS ENGINEER

*Paul...*  
DISTRICT OPERATIONS ENGINEER

REVISIONS NAME	DATE

ILLINOIS DEPARTMENT OF TRANSPORTATION

**GENERAL NOTES**

IL ROUTE 251 OVER INTERSTATE ROUTE 80  
F.A.I. ROUTE 80 SECTION (50-2HB)1-1  
LASALLE COUNTY  
STATION 569+41.10

DATE 01/17/2006 DRAWN BY RLW

DATE: 01/17/2006  
c:/projects/cm305/details.dgn

F.A.I. RTE.	SECTION	COUNTY	TOTAL SHEETS	SHEET NO.
80	(50-2HB)I-1	LASALLE	26	3
ILLINOIS			STATE PROJECT	

## SUMMARY OF QUANTITIES

CONSTRUCTION CODE TYPE: SFTY-2A

URBAN  
100% STATE  
TOTAL  
QUANTITY

CODE NO.	ITEM	UNIT	QUANTITY
44000910	BITUMINOUS CONCRETE REMOVAL (DECK)	SQ YD	1360
50102400	CONCRETE REMOVAL	CU YD	3.8
50104100	BRIDGE HANDRAIL REMOVAL	FOOT	816
50300255	CONCRETE SUPERSTRUCTURE	CU YD	3.8
58100200	WATERPROOFING MEMBRANE SYSTEM	SQ YD	1360
67000400	ENGINEER'S FIELD OFFICE, TYPE A	CAL MO	4
67100100	MOBILIZATION	L SUM	1
70100420	TRAFFIC CONTROL AND PROTECTION, STANDARD 701411	EACH	3
70100700	TRAFFIC CONTROL AND PROTECTION, STANDARD 701406	L SUM	1
70102670	TRAFFIC CONTROL AND PROTECTION, STANDARD 701601 (SPECIAL)	L SUM	1
70103710	TRAFFIC CONTROL FOR RAMPS	L SUM	1
70103815	TRAFFIC CONTROL SURVEILLANCE	CAL DAY	75
70300220	TEMPORARY PAVEMENT MARKING - LINE 4"	FOOT	10474
70301000	WORK ZONE PAVEMENT MARKING REMOVAL	SQ FT	2456
78000100	THERMOPLASTIC PAVEMENT MARKING - LETTERS AND SYMBOLS	SQ FT	211
* 78000200	THERMOPLASTIC PAVEMENT MARKING - LINE 4"	FOOT	5665
* 78000400	THERMOPLASTIC PAVEMENT MARKING - LINE 6"	FOOT	2926
* 78000500	THERMOPLASTIC PAVEMENT MARKING - LINE 8"	FOOT	419
* 78000600	THERMOPLASTIC PAVEMENT MARKING - LINE 12"	FOOT	16
78300100	PAVEMENT MARKING REMOVAL	SQ FT	3865
X0322932	SILICONE JOINT SEALER, 1.5"	FOOT	150
X4066426	BITUMINOUS CONCRETE SURFACE COURSE, SUPERPAVE, MIX "D", N70	TON	116
* X7200201	WIDTH RESTRICTION SIGNING	L SUM	1
Z0016200	DECK SLAB REPAIR (PARTIAL)	SQ YD	136
Z0047300	PROTECTIVE SHIELD	SQ YD	405
Z0073300	TEMPORARY SHORING AND CRIBBING	L SUM	1
X0325305	STRUCTURAL REPAIR OF CONCRETE (DEPTH EQUAL TO OR LESS THAN 5")	SQ FT	770
X0325303	STRUCTURAL REPAIR OF CONCRETE (DEPTH GREATER THAN 5")	SQ FT	31

\* SPECIALTY ITEM

DATE: 01/17/2006  
c:\projects\cmain07\cm305\details.dgn

REVISIONS	
NAME	DATE

ILLINOIS DEPARTMENT OF TRANSPORTATION  
**SUMMARY OF QUANTITIES**  
IL ROUTE 251 OVER INTERSTATE ROUTE 80  
F.A.I. ROUTE 80 SECTION (50-2HB)I-1  
LASALLE COUNTY  
STATION 569+41.10

DATE 01/17/2006

DRAWN BY RLW

F.A.I. RTE.	SECTION	COUNTY	TOTAL SHEETS	SHEET NO.
80	(50-2HB)I-1	LASALLE	26	4
ILLINOIS			STATE PROJECT	

LOCATION	BITUMINOUS CONCRETE REMOVAL (DECK)	WATERPROOFING MEMBRANE SYSTEM	BITUMINOUS CONCRETE SURFACE CSE. SUPERPAVE MIX "D", N70
	SQ YD	SQ YD	TON
STAGE I - DECK	374	340	29
STAGE II - DECK	306	340	29
TOTAL	680	680	58

LOCATION	CONCRETE REMOVAL	CONCRETE SUPERSTRUCTURE
	CU YD	CU YD
STAGE I - PARAPET	0.95	0.95
STAGE II - PARAPET	0.95	0.95
TOTAL	1.90	1.90

LOCATION	BRIDGE HANDRAIL REMOVAL
	STAGE I - PARAPET
STAGE II - PARAPET	204
TOTAL	408

LOCATION	SILICONE JOINT SEALER 1.5"
	FOOT
STAGE I - DECK	38
STAGE II - DECK	38
TOTAL	75

LOCATION	PAVEMENT MARKING REMOVAL	TEMPORARY PAVEMENT MARKING LINE 4"	WORKZONE PAVEMENT MARKING REMOVAL
	SQ FT	FOOT	SQ FT
STAGE I	1611	3694	1219
STAGE II	1650	3831	1264
TOTAL	3261	7525	2483

LOCATION	THERMOPLASTIC PAVEMENT MARKING L & S	THERMOPLASTIC PAVEMENT MARKING LINE 4"		THERMOPLASTIC PAVEMENT MARKING LINE 6"	THERMOPLASTIC PAVEMENT MARKING LINE 8"	THERMOPLASTIC PAVEMENT MARKING LINE 12"
	SQ FT	FOOT		FOOT	FOOT	FOOT
		YELLOW	WHITE	WHITE	WHITE	WHITE
NORTHBOUND	169	1875	2035	1976	362	16
TOTAL	169	3910		1976	362	16

REVISIONS	
NAME	DATE

ILLINOIS DEPARTMENT OF TRANSPORTATION  
**SCHEDULES - SN 050-0078 NB**  
 IL ROUTE 251 OVER INTERSTATE ROUTE 80  
 F.A.I. ROUTE 80 SECTION (50-2HB)I-1  
 LASALLE COUNTY  
 STATION 569+41.10

DATE: 01/17/2006  
 c:\projects\cm305\details.dgn

F.A.I. RTE.	SECTION	COUNTY	TOTAL SHEETS	SHEET NO.
80	150-2HB)I-1	LASALLE	26	5
ILLINOIS			STATE PROJECT	

LOCATION	BITUMINOUS CONCRETE REMOVAL (DECK)	WATERPROOFING MEMBRANE SYSTEM	BITUMINOUS CONCRETE SURFACE CSE. SUPERPAVE MIX "D", N70
	SQ YD	SQ YD	TON
STAGE I - DECK	374	340	29
STAGE II - DECK	306	340	29
TOTAL	680	680	58

LOCATION	CONCRETE REMOVAL	CONCRETE SUPERSTRUCTURE
	CU YD	CU YD
STAGE I - PARAPET	0.95	0.95
STAGE II - PARAPET	0.95	0.95
TOTAL	1.90	1.90

LOCATION	BRIDGE HANDRAIL REMOVAL
	STAGE I - PARAPET
STAGE II - PARAPET	204
TOTAL	408

LOCATION	SILICONE JOINT SEALER 1.5" FOOT
	STAGE I - DECK
STAGE II - DECK	38
TOTAL	75

LOCATION	PAVEMENT MARKING REMOVAL	TEMPORARY PAVEMENT MARKING LINE 4"	WORKZONE PAVEMENT MARKING REMOVAL
	SQ FT	FOOT	SQ FT
STAGE I	413	1477	487
STAGE II	253	1472	486
TOTAL	666	2949	973

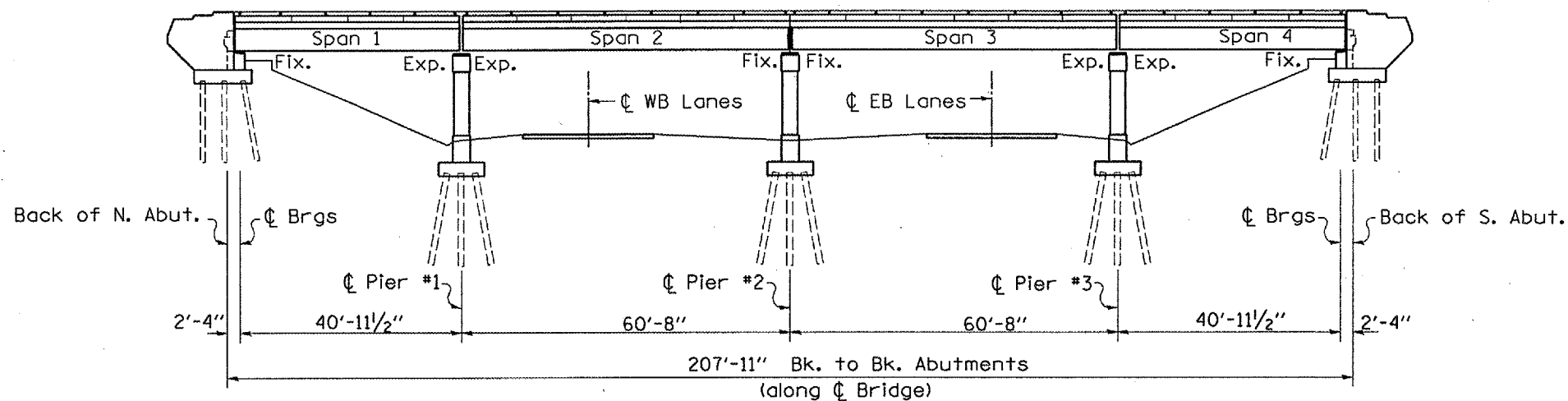
LOCATION	THERMOPLASTIC PAVEMENT MARKING L & S	THERMOPLASTIC PAVEMENT MARKING LINE 4"		THERMOPLASTIC PAVEMENT MARKING LINE 6"	THERMOPLASTIC PAVEMENT MARKING LINE 8"	THERMOPLASTIC PAVEMENT MARKING LINE 12"
	SQ FT	FOOT	FOOT	FOOT	FOOT	FOOT
		YELLOW	WHITE	WHITE	WHITE	WHITE
SOUTHBOUND		708	1047	950	57	
TOTAL		1755		950	57	

REVISIONS	
NAME	DATE

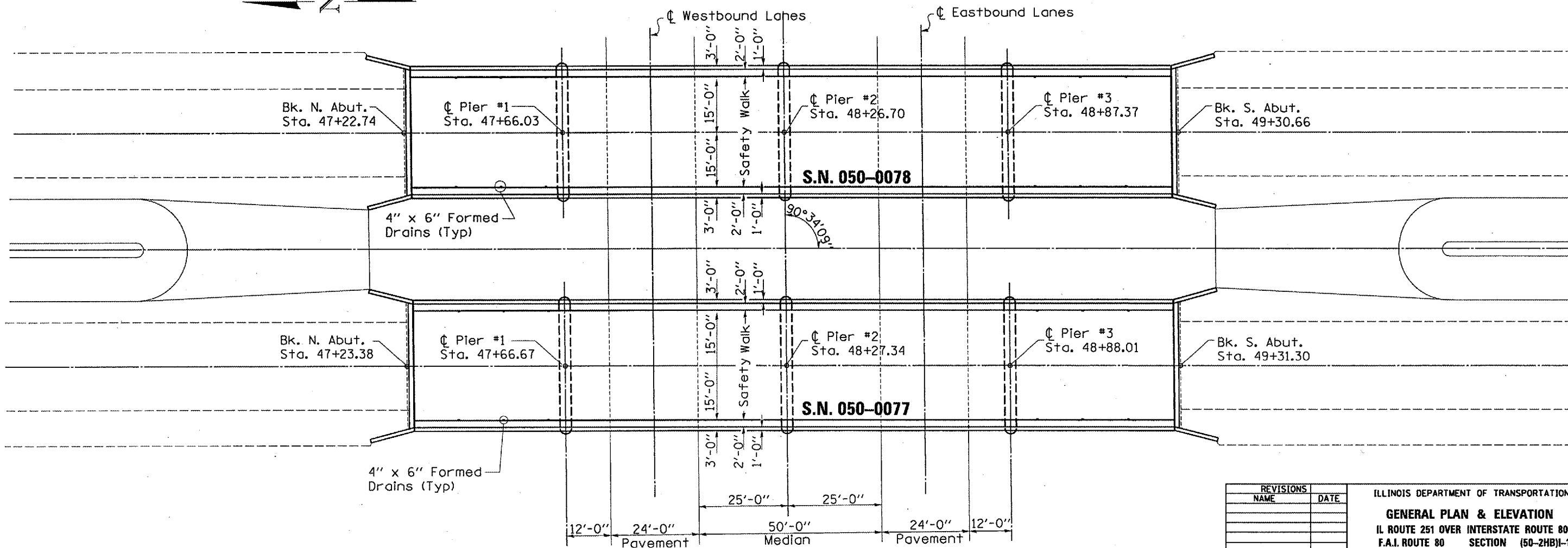
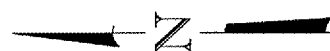
ILLINOIS DEPARTMENT OF TRANSPORTATION  
**SCHEDULES - SN 050-0077 SB**  
 IL ROUTE 251 OVER INTERSTATE ROUTE 80  
 F.A.I. ROUTE 80 SECTION (50-2HB)I-1  
 LASALLE COUNTY  
 STATION 569+41.10

DATE: 01/17/2006  
 c:/projects/cmain07/cm305/details.dgn

F.A.I. RTE.	SECTION	COUNTY	TOTAL SHEETS	SHEET NO.
80	(50-2HB)I-1	LASALLE	26	6
ILLINOIS			STATE PROJECT	



**ELEVATION**



**PLAN**

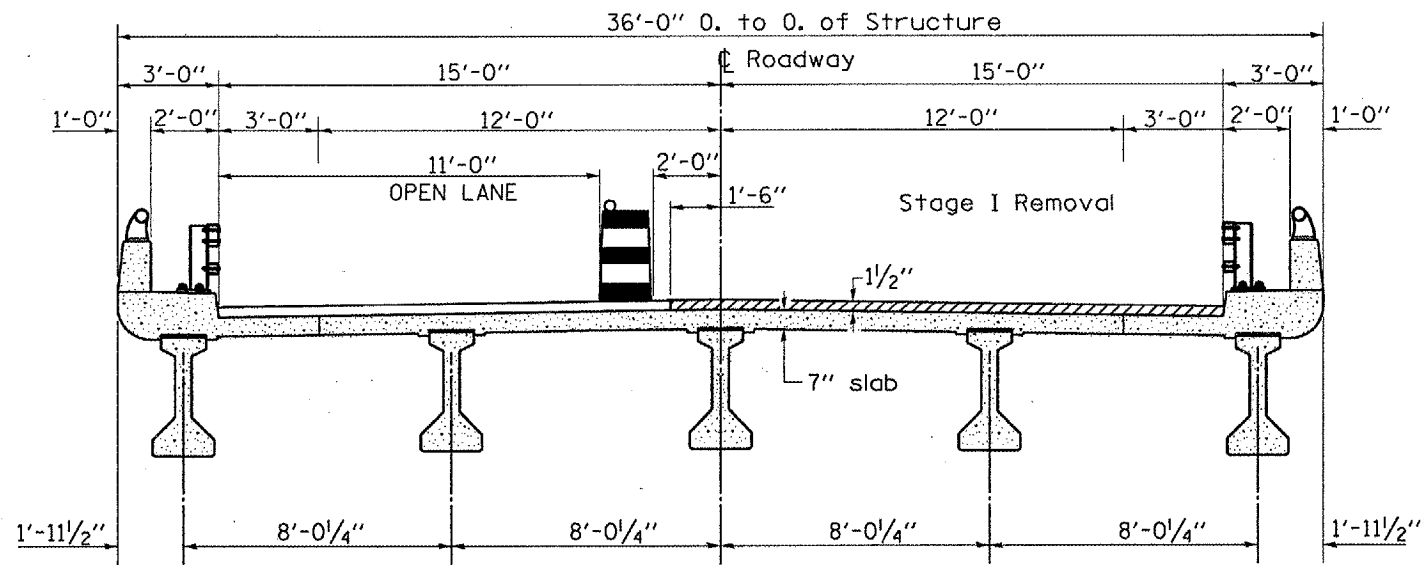
REVISIONS	
NAME	DATE

ILLINOIS DEPARTMENT OF TRANSPORTATION  
**GENERAL PLAN & ELEVATION**  
 IL ROUTE 251 OVER INTERSTATE ROUTE 80  
 F.A.I. ROUTE 80 SECTION (50-2HB)I-1  
 LASALLE COUNTY  
 STATION 569+41.10

DATE 01/17/2006

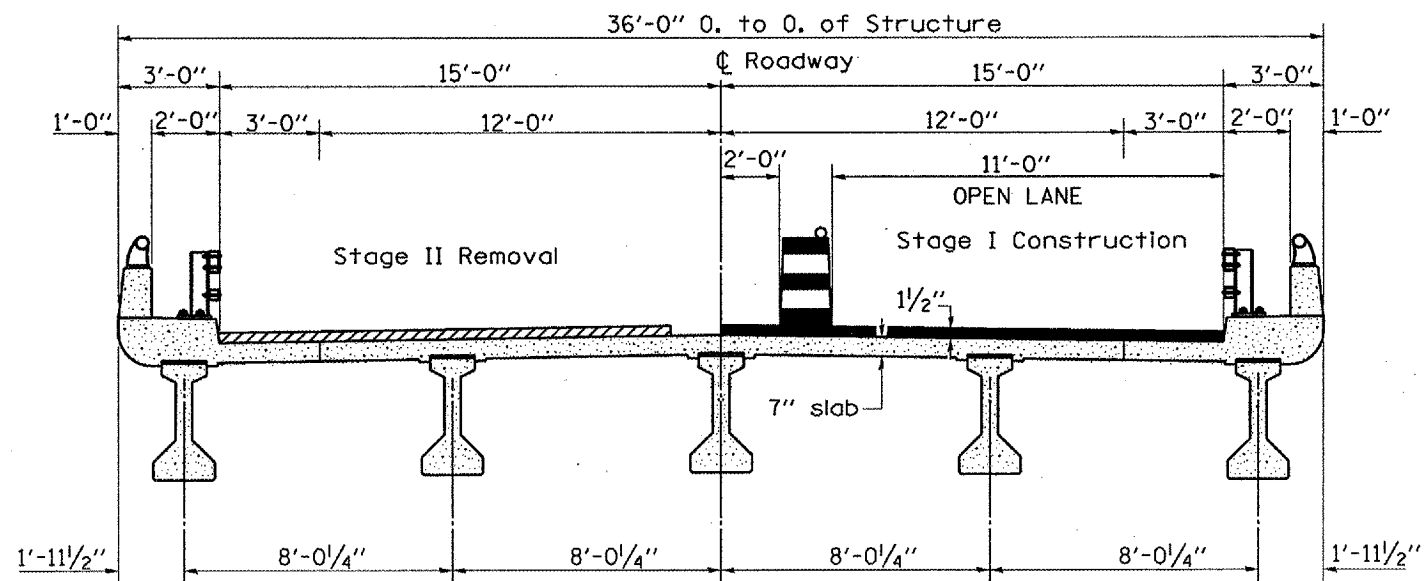
DRAWN BY RLW

DATE: 01/17/2006  
 c:/projects/main07/cm305/details.dgn

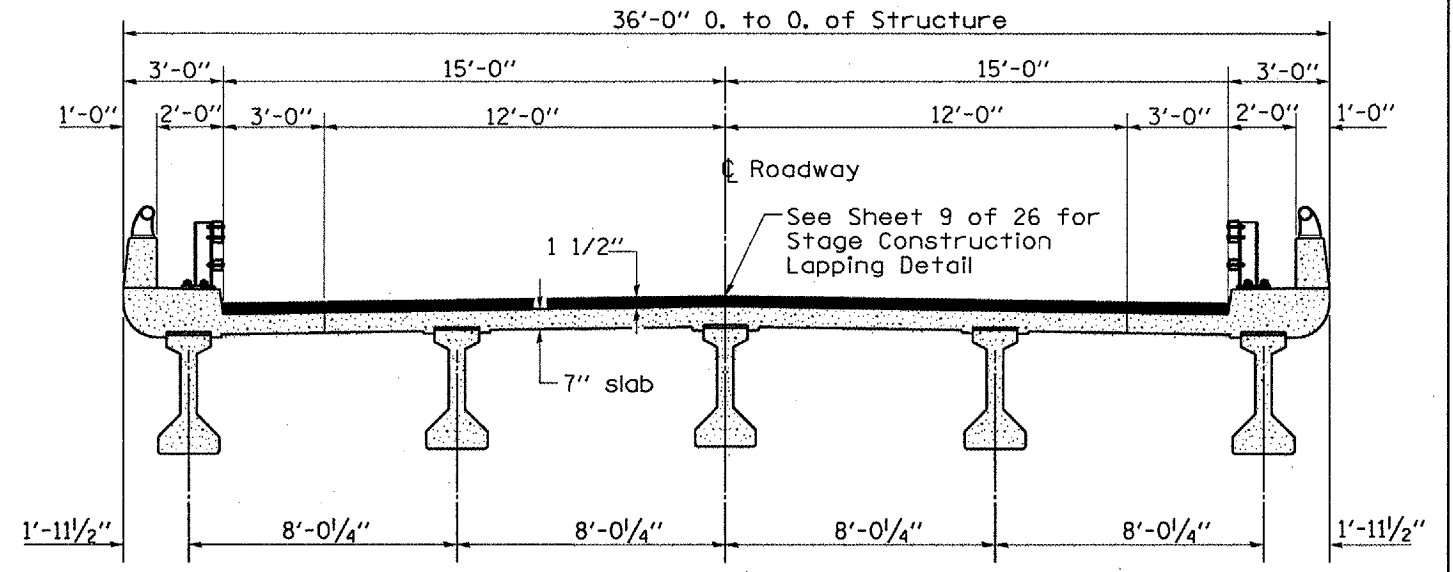


**EXISTING TYPICAL SECTION  
STAGE I**

Bituminous Surface & waterproofing removal



**EXISTING TYPICAL SECTION  
STAGE II**



**PROPOSED TYPICAL SECTIONS**

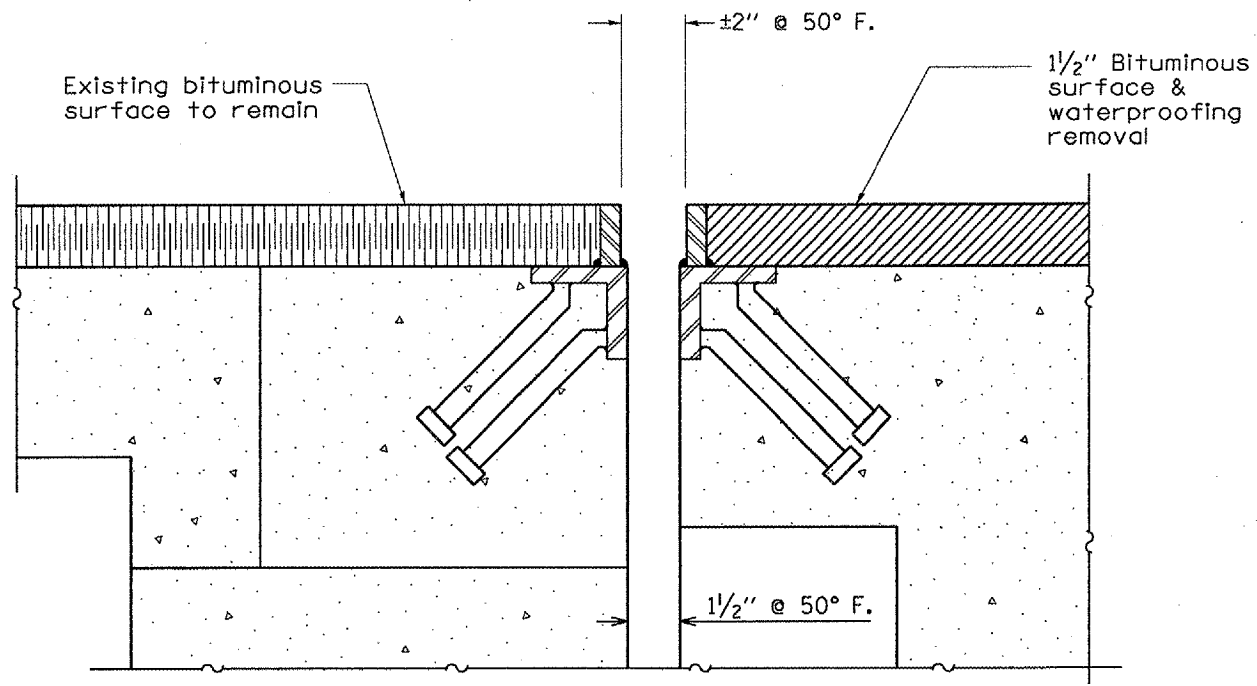
Bituminus Concrete Surface Cse. Superpave, Mix D, N70 & Waterproofing Membrane System

REVISIONS	
NAME	DATE

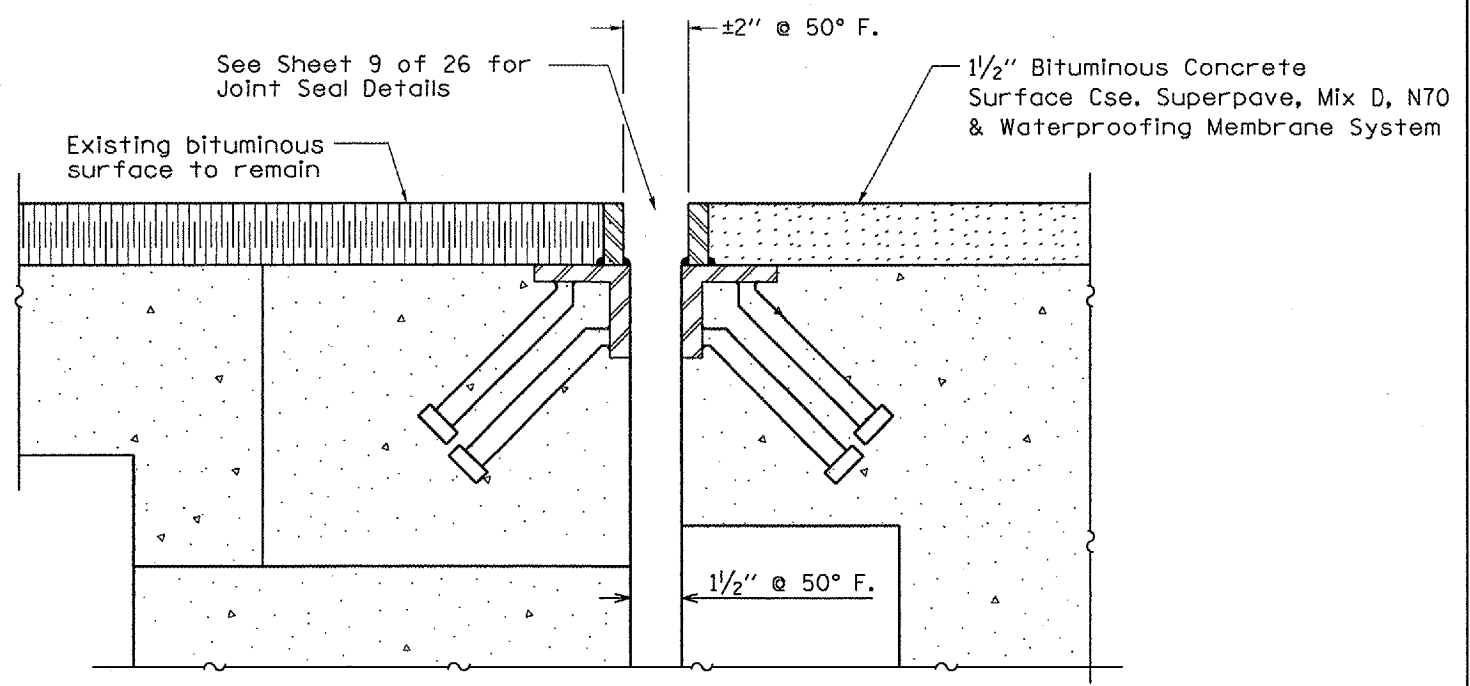
ILLINOIS DEPARTMENT OF TRANSPORTATION  
**TYPICAL SECTIONS**  
 IL ROUTE 251 OVER INTERSTATE ROUTE 80  
 F.A.I. ROUTE 80 SECTION (50-2HB)I-1  
 LASALLE COUNTY  
 STATION 569+41.10  
 DATE 01/17/2006 DRAWN BY RLW

DATE: 01/17/2006  
 c:/projects/cmain07/cm305/details.dgn

CONTRACT NO. 66648				
F.A.I. RTE.	SECTION	COUNTY	TOTAL SHEETS	SHEET NO.
80	(50-2HB)1-1	LASALLE	26	8
ILLINOIS			STATE PROJECT	

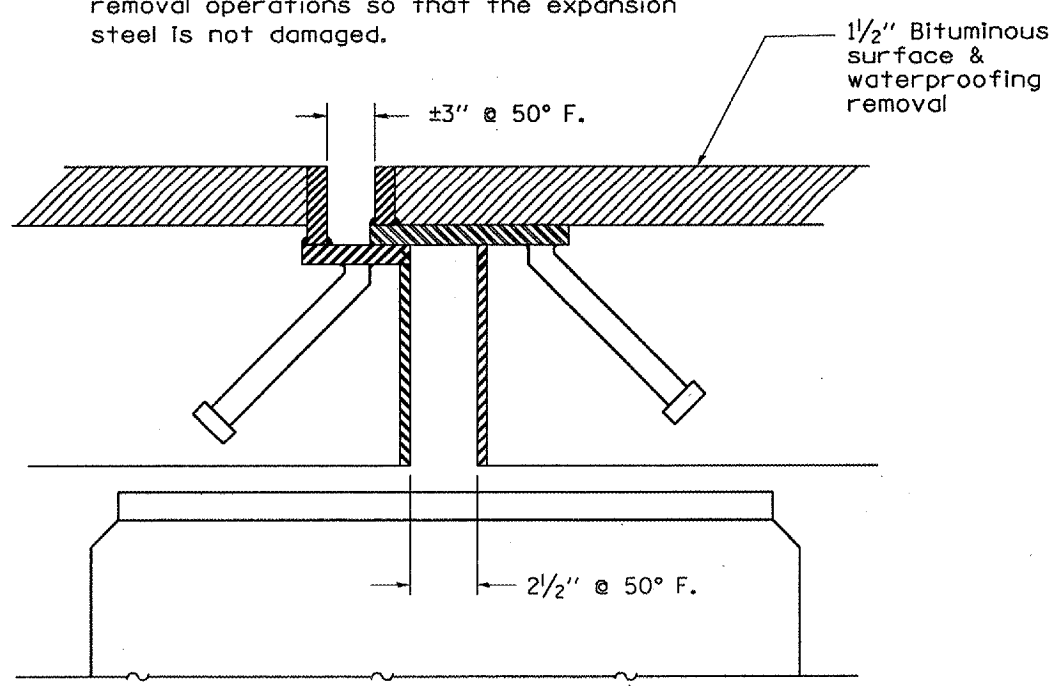


**EXISTING TYPICAL SECTION AT ABUTMENTS**

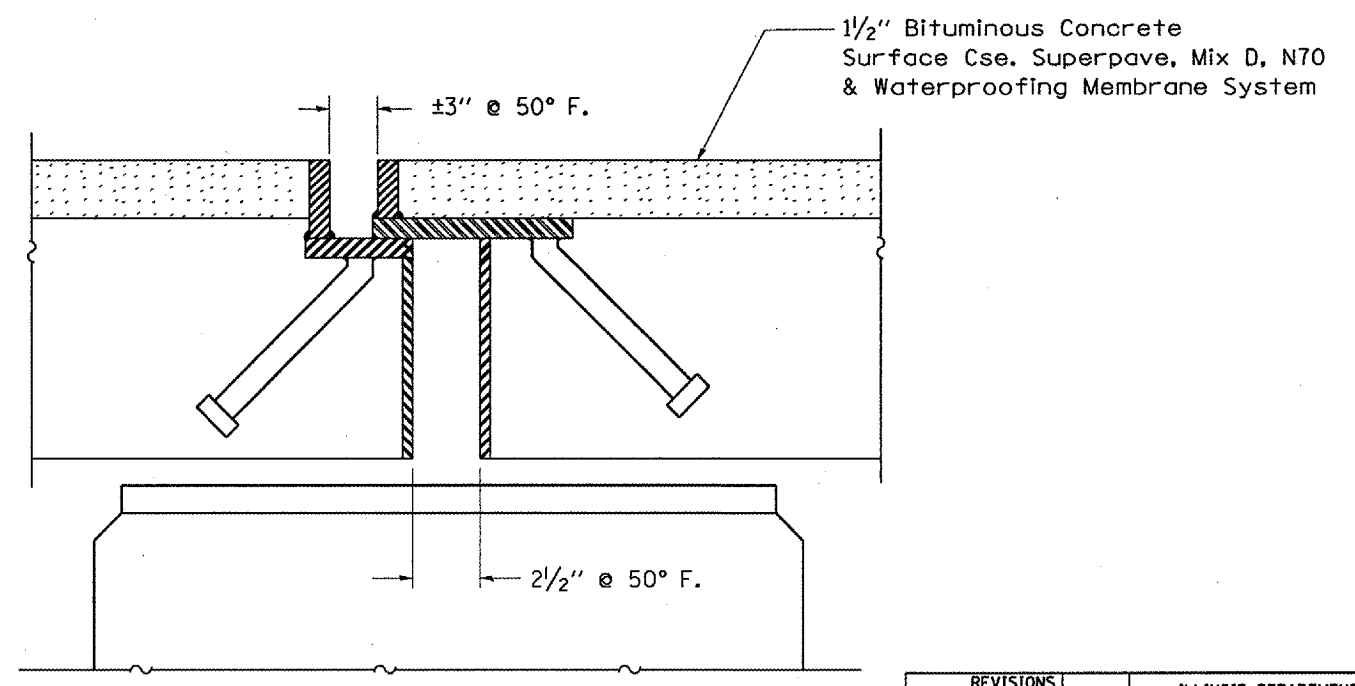


**PROPOSED TYPICAL SECTION AT ABUTMENTS**

NOTE: All existing expansion shall remain in place. The Contractor shall exercise care during removal operations so that the expansion steel is not damaged.



**EXISTING TYPICAL SECTION AT PIERS**



**PROPOSED TYPICAL SECTION AT PIERS**

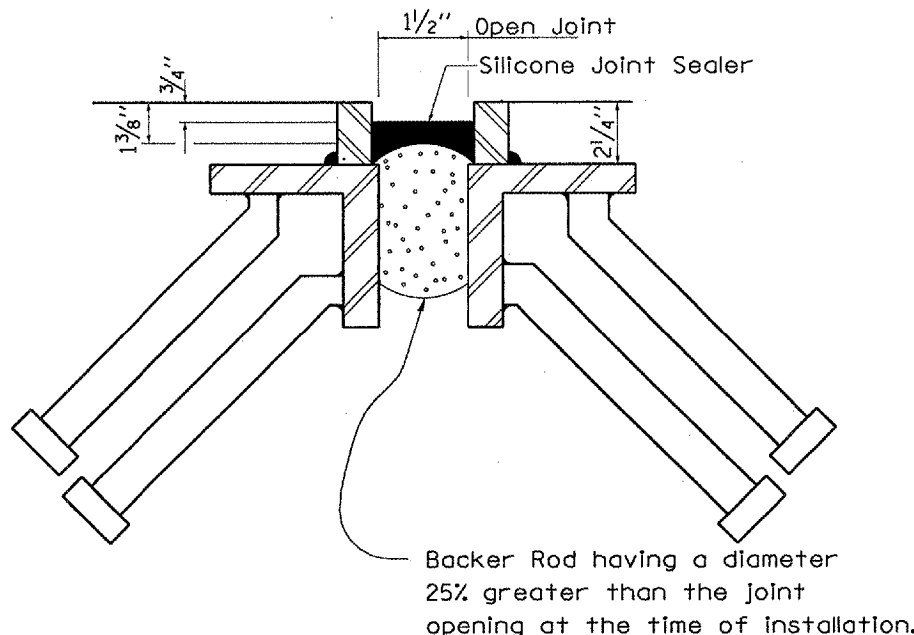
DATE: 01/17/2006  
 c:/projects/cm305/details.dgn

REVISIONS	NAME	DATE

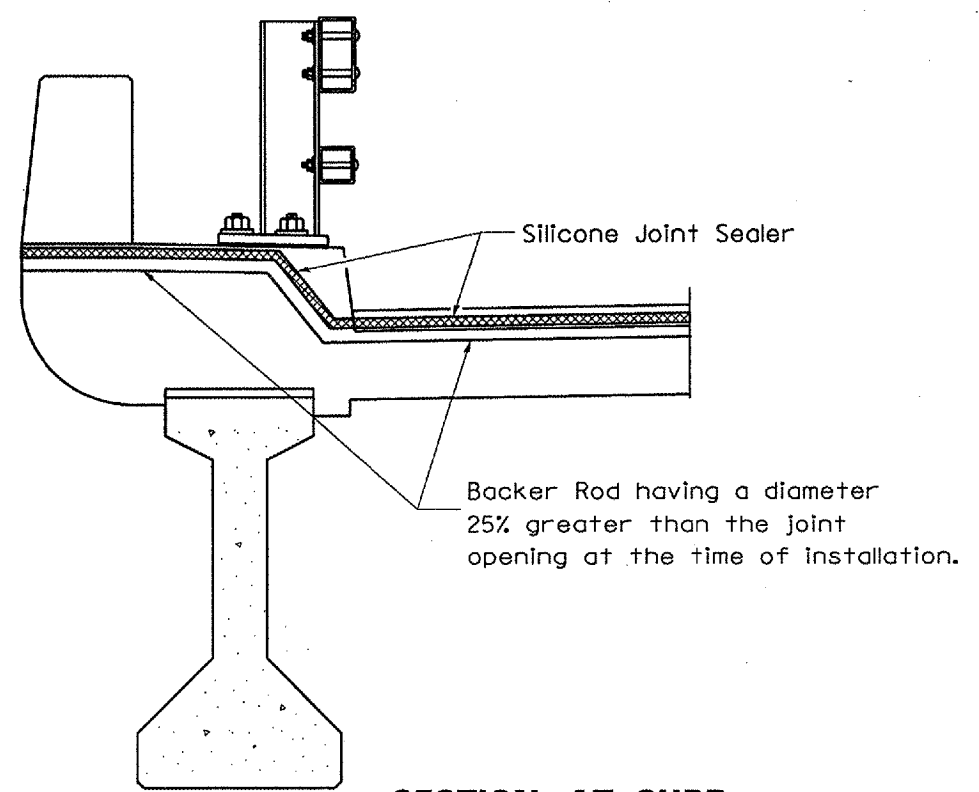
ILLINOIS DEPARTMENT OF TRANSPORTATION  
**BRIDGE JOINT DETAILS**  
 IL ROUTE 251 OVER INTERSTATE ROUTE 80  
 F.A.I. ROUTE 80 SECTION (50-2HB)1-1  
 LASALLE COUNTY  
 STATION 569 + 41.10  
 DATE 01/17/2006 DRAWN BY RLW



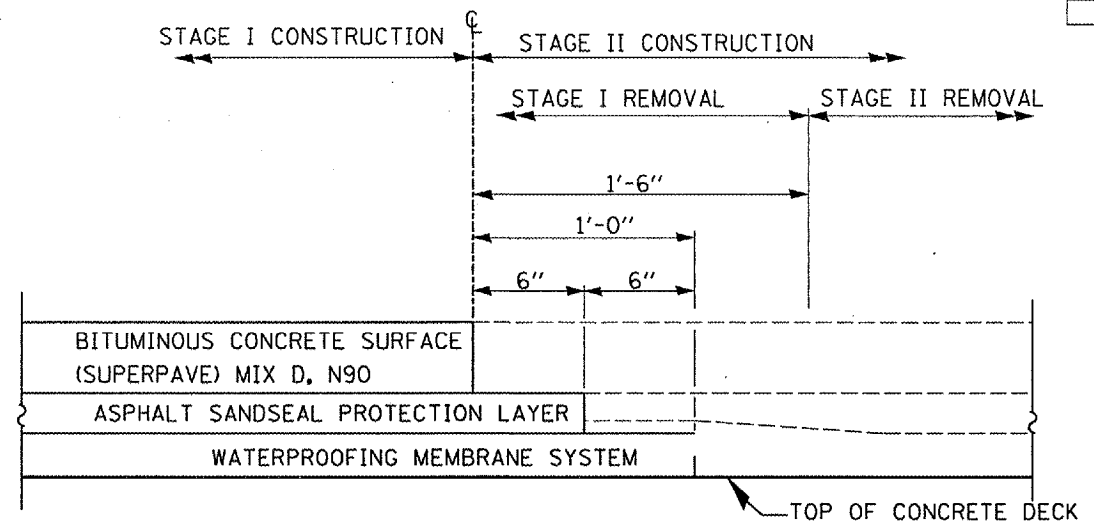
F.A.I. RTE.	SECTION	COUNTY	TOTAL SHEETS	SHEET NO.
80	150-2HB1-1	LASALLE	26	9
ILLINOIS			STATE PROJECT	



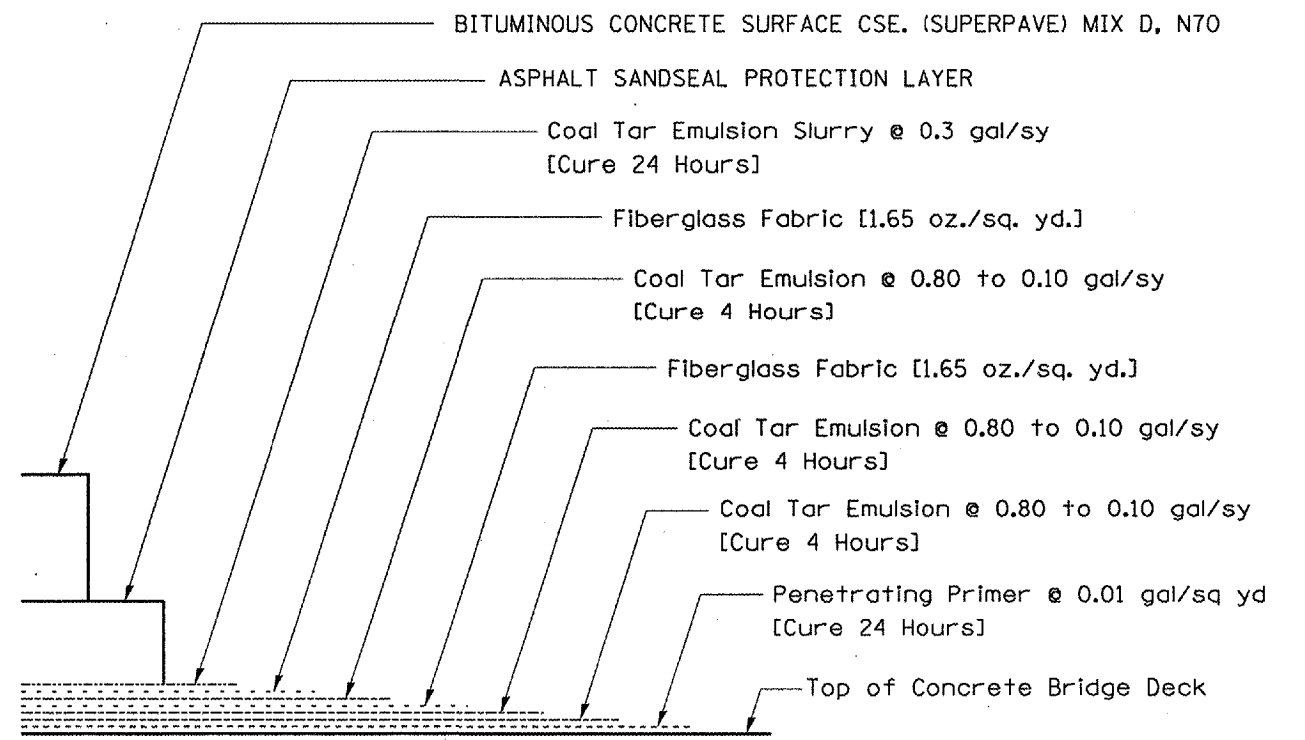
**JOINT SEAL DETAIL AT ABUTMENTS**



**SECTION AT CURB**



**STAGE CONSTRUCTION LAPPING DETAIL**



**WATERPROOFING MEMBRANE SYSTEM DETAIL**

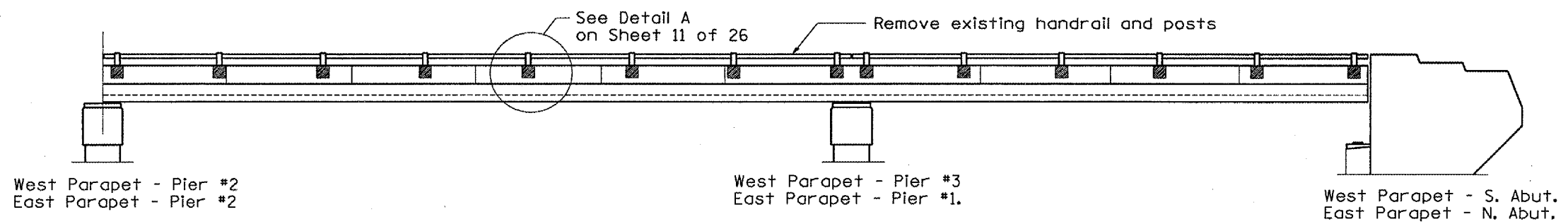
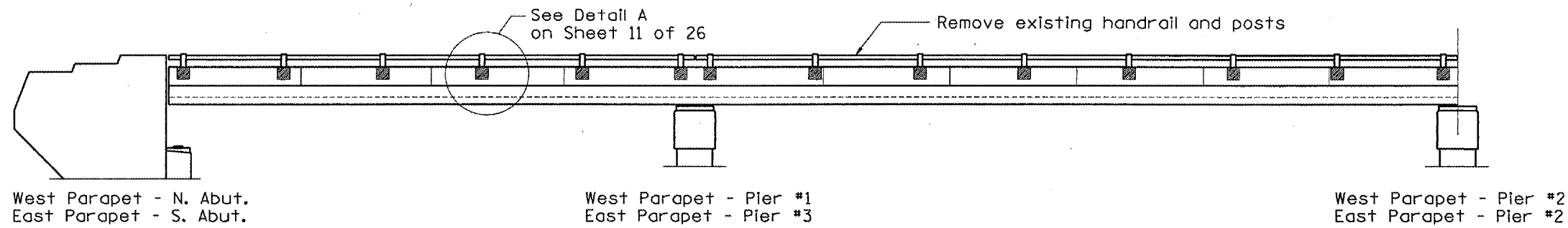
DATE: 01/17/2006  
c:/projects/cmain07/cm305/details.dgn

REVISIONS	DATE
NAME	

ILLINOIS DEPARTMENT OF TRANSPORTATION  
**MISCELLANEOUS DETAILS**  
IL ROUTE 251 OVER INTERSTATE ROUTE 80  
F.A.I. ROUTE 80 SECTION (50-2HB1)-1  
LASALLE COUNTY  
STATION 569+41.10

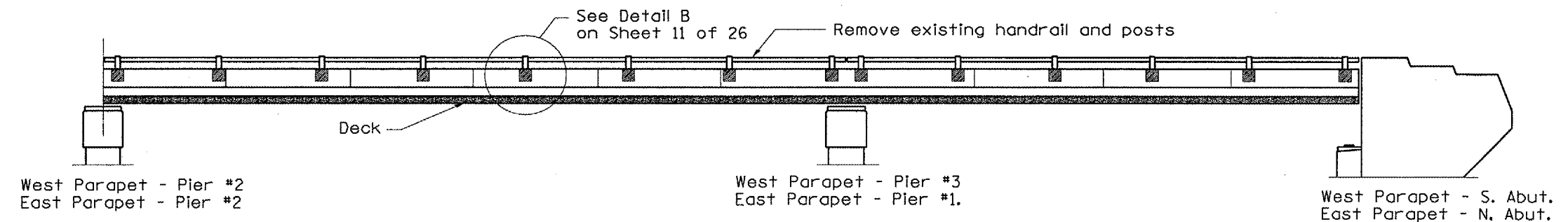
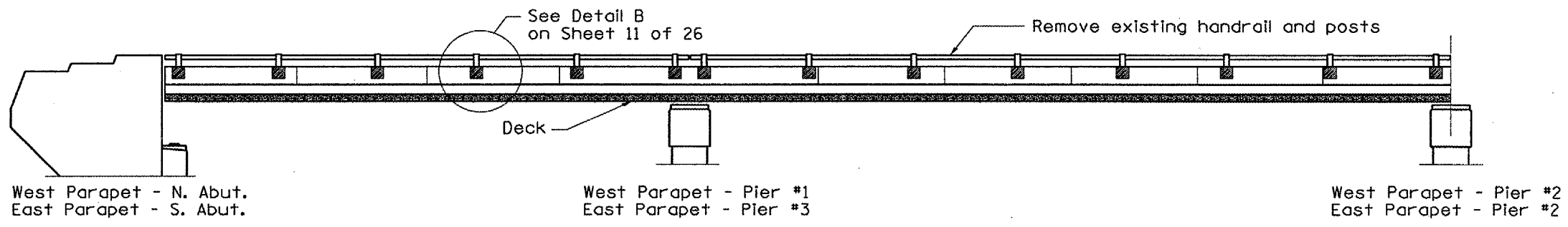
DATE 01/17/2006    DRAWN BY RLW

F.A.I. RTE.	SECTION	COUNTY	TOTAL SHEETS	SHEET NO.
80	(50-2HB)I-1	LASALLE	26	10
ILLINOIS			STATE PROJECT	



**PARAPET**  
**NORTHBOUND STRUCTURE SHOWN**  
**S.N. 050-0078**

 CONCRETE REMOVAL & REPLACEMENT



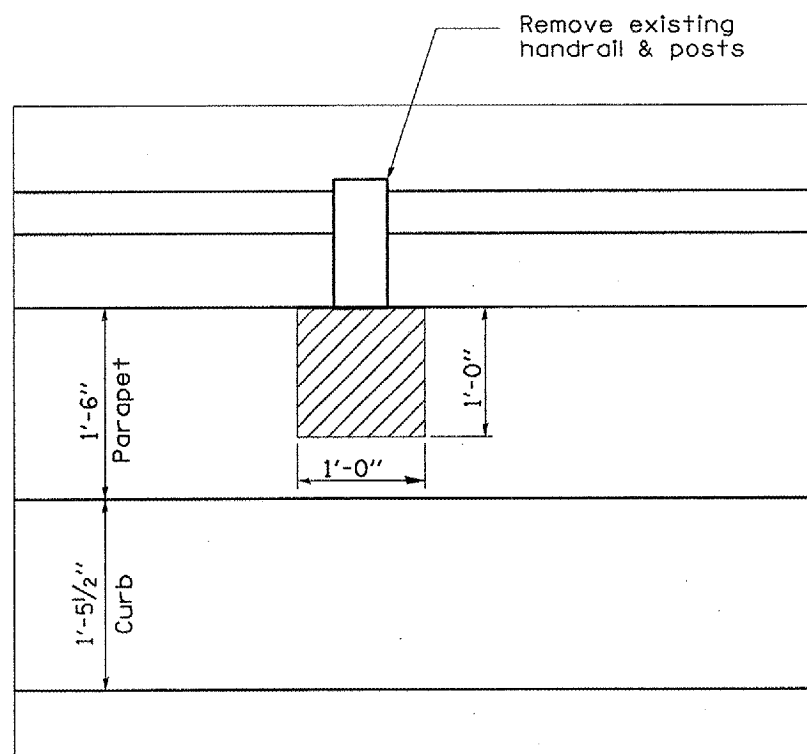
**PARAPET**  
**SOUTHBOUND STRUCTURE SHOWN**  
**S.N. 050-0077**

REVISIONS	
NAME	DATE

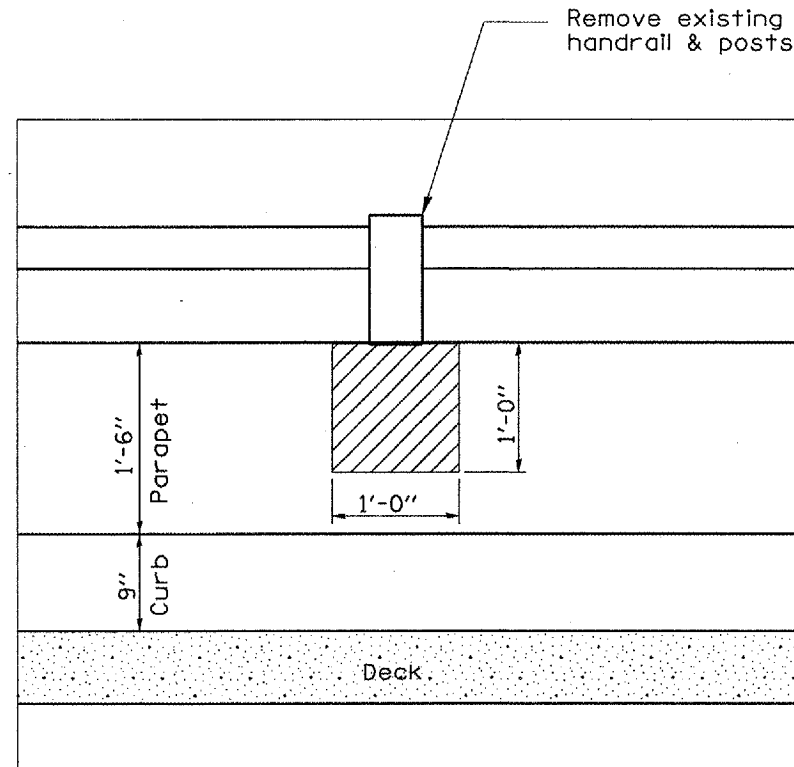
ILLINOIS DEPARTMENT OF TRANSPORTATION  
**PARAPET REPAIR DETAILS**  
IL ROUTE 251 OVER INTERSTATE ROUTE 80  
F.A.I. ROUTE 80 SECTION (50-2HB)I-1  
LASALLE COUNTY  
STATION 569+41.10

DATE: 01/17/2006  
c:/projects/cmain07/cm305/details.dgn

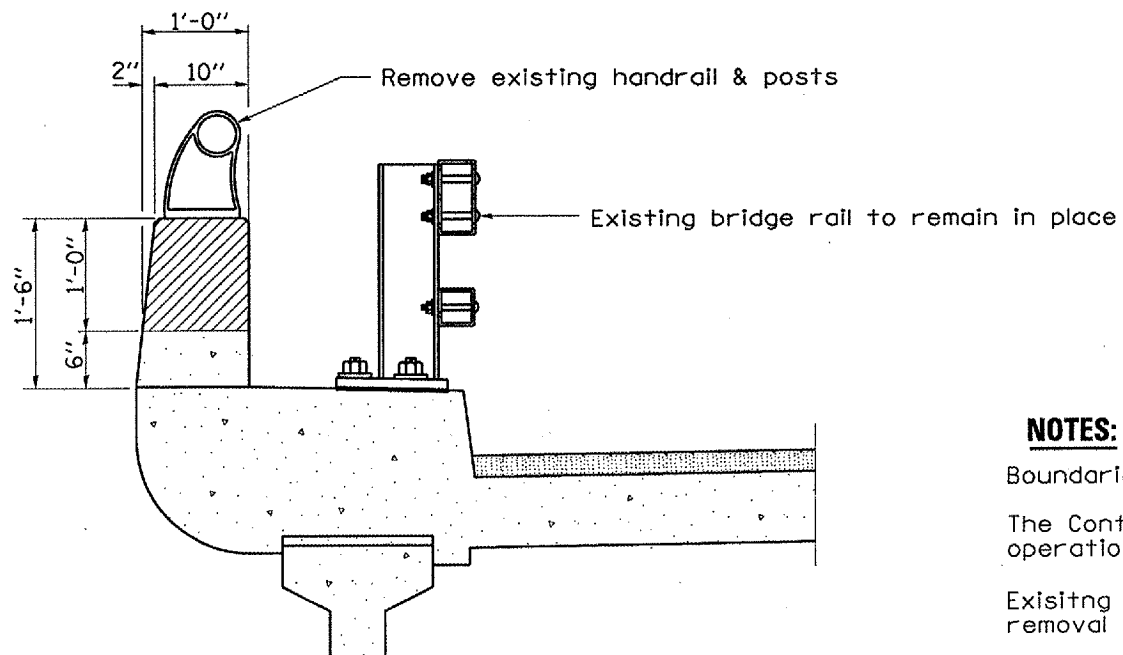
F.A.I. RTE.	SECTION	COUNTY	TOTAL SHEETS	SHEET NO.
80	(50-2HB)I-1	LASALLE	26	11
ILLINOIS			STATE PROJECT	



**DETAIL A**



**DETAIL B**



**SECTION AT CURB**

- CONCRETE REMOVAL & REPLACEMENT
- BITUMINOUS SURFACE & WATERPROOFING REMOVAL AND RELACEMENT

**NOTES:**

Boundaries of removal areas shall be saw cut a maximum of 3/4"

The Contractor shall exercise care during concrete removal operations so that the existing reinforcement are not damaged.

Existing reinforcement that are damaged due to the Contractor's removal operations shall be repaired or replaced at his expense.

If the existing reinforcement are damaged not due to the Contractor's removal operations or are deteriorated beyond effectiveness shall be repaired or replaced by lapping an equivalent size bar with the existing bar. Cost of furnishing and splicing new bars shall be paid for according to Article 109.04 of the Standard Specifications.

REVISIONS	
NAME	DATE

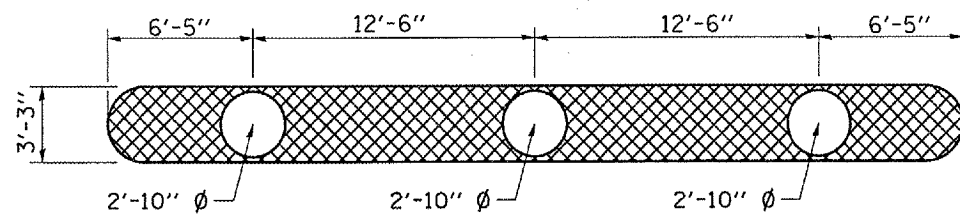
ILLINOIS DEPARTMENT OF TRANSPORTATION  
**PARAPET REPAIR DETAILS**  
 IL ROUTE 251 OVER INTERSTATE ROUTE 80  
 F.A.I. ROUTE 80 SECTION (50-2HB)I-1  
 LASALLE COUNTY  
 STATION 569+41.10

DATE 01/17/2006

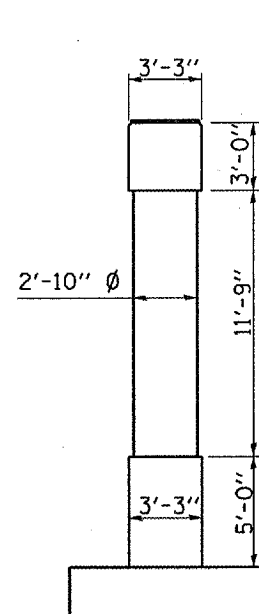
DRAWN BY RLW

DATE: 01/17/2006  
 c:/projects/cmain07/cm305/details.dgn

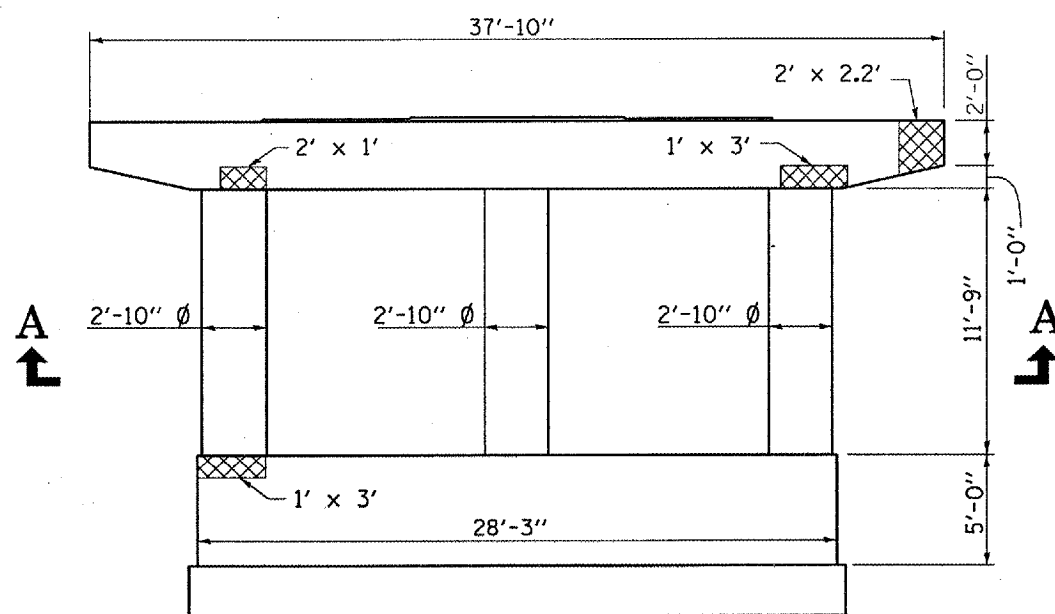
F.A.I. RTE.	SECTION	COUNTY	TOTAL SHEETS	SHEET NO.
80	(50-2HB)I-1	LASALLE	26	12
ILLINOIS			STATE PROJECT	



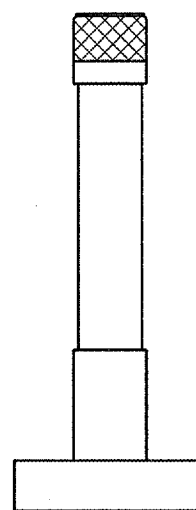
**VIEW A-A**



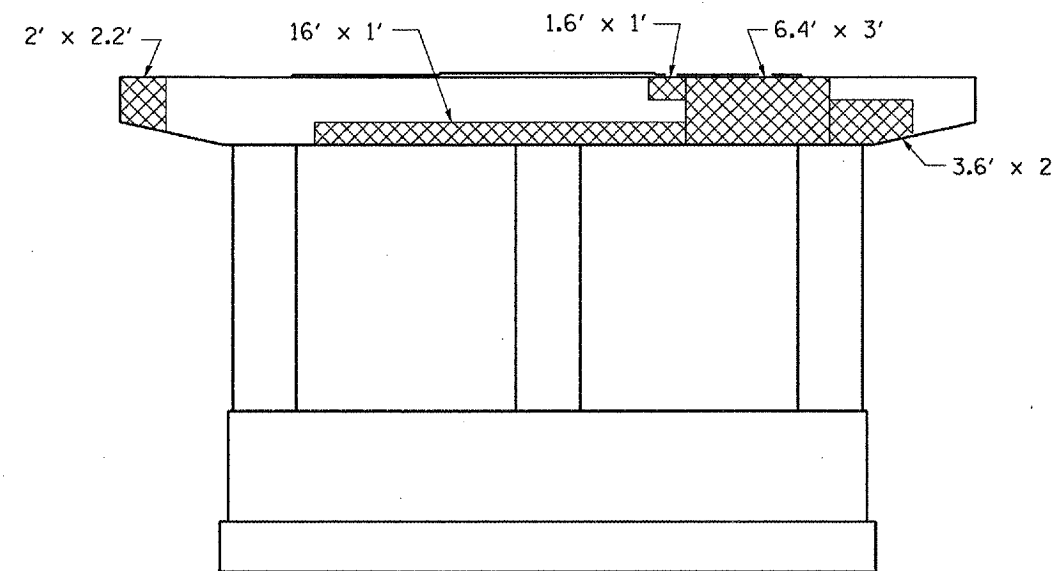
**WEST END**



**SOUTH FACE**



**EAST END**



**NORTH FACE**

**PIER #1**

**050-0078 NB**

*BILL OF MATERIAL*

Item	Unit	Total
STRUCTURAL REPAIR OF CONCRETE, DEPTH ≤ 5"	SQ. FT.	169

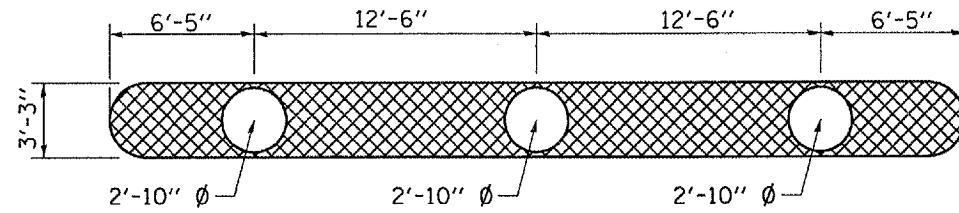
REVISIONS	
NAME	DATE

ILLINOIS DEPARTMENT OF TRANSPORTATION  
**PIER REPAIR DETAILS**  
**PIER #1 S.N. 050-0078 NBL**  
 IL ROUTE 251 OVER INTERSTATE ROUTE 80  
 F.A.I. ROUTE 80 SECTION (50-2HB)I-1  
 LASALLE COUNTY  
 STATION 569 + 41.10

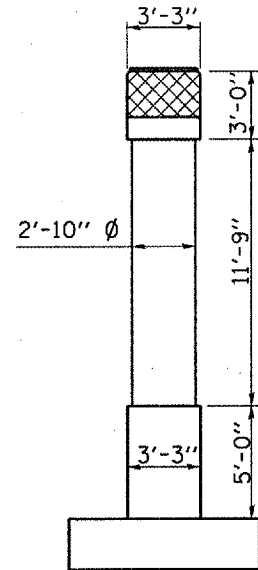
DATE 01/17/2006 DRAWN BY RLW

DATE: 01/17/2006  
 c:/projects/cmain07/cm305/details.dgn

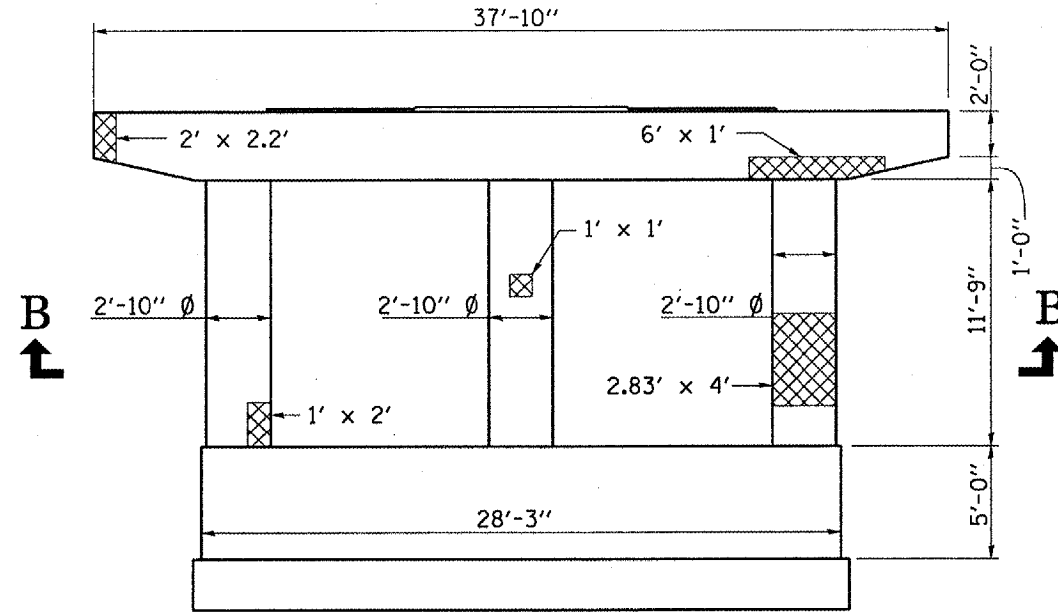
F.A.I. RTE.	SECTION	COUNTY	TOTAL SHEETS	SHEET NO.
80	150-2HB1-1	LASALLE	26	13
		ILLINOIS		STATE PROJECT



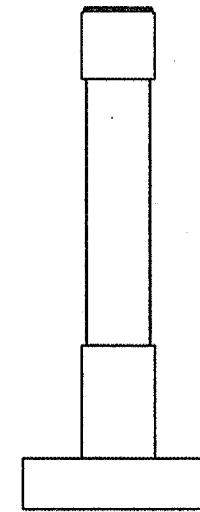
**VIEW B-B**



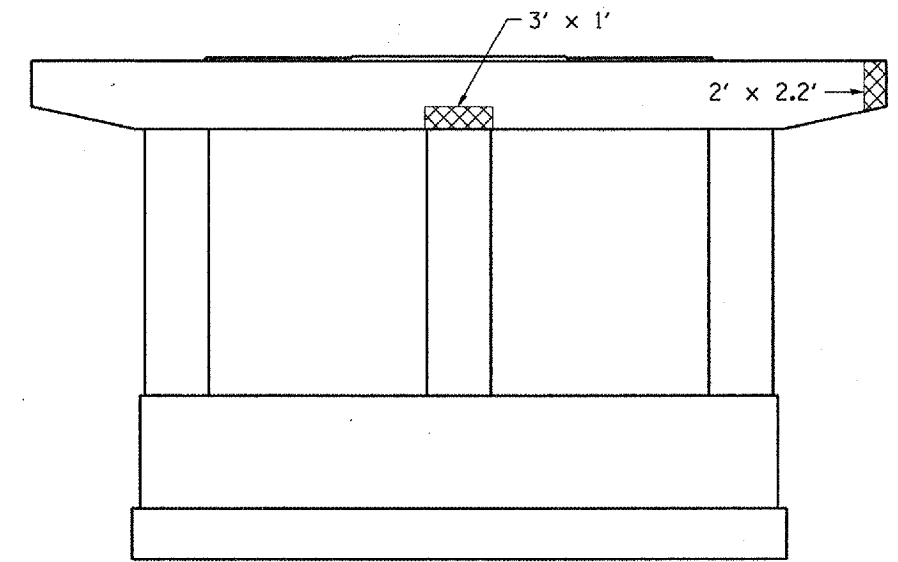
**WEST END**



**SOUTH FACE**



**EAST END**



**NORTH FACE**

**BILL OF MATERIAL**

Item	Unit	Total
STRUCTURAL REPAIR OF CONCRETE, DEPTH ≤ 5"	SQ. FT.	140

**PIER #2**

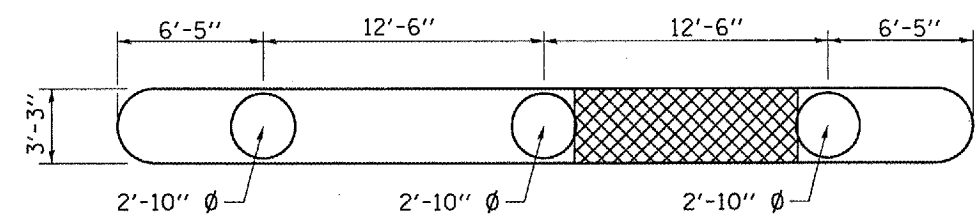
**050-0078 NB**

DATE: 01/17/2006  
 c:/projects/cmain07/cm305/details.dgn

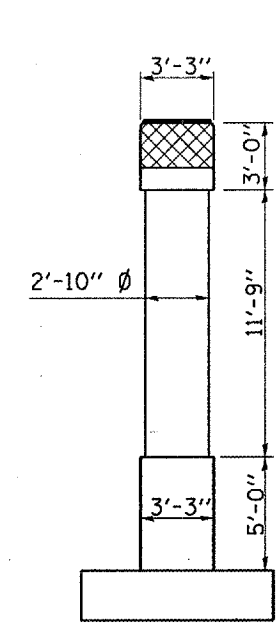
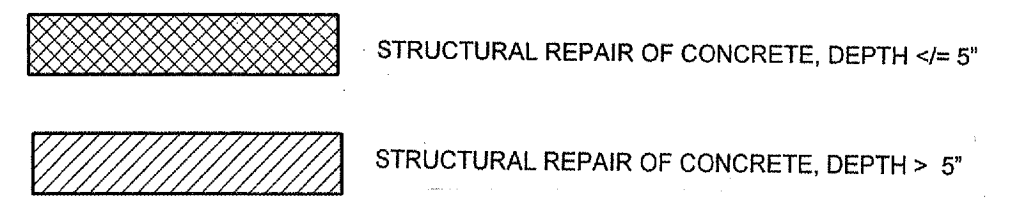
REVISIONS	DATE
NAME	

ILLINOIS DEPARTMENT OF TRANSPORTATION  
**PIER REPAIR DETAILS**  
**PIER #2 S.N. 050-0078 NBL**  
 IL ROUTE 251 OVER INTERSTATE ROUTE 80  
 F.A.I. ROUTE 80 SECTION (50-2HB)1-1  
 LASALLE COUNTY  
 STATION 569 + 41.10

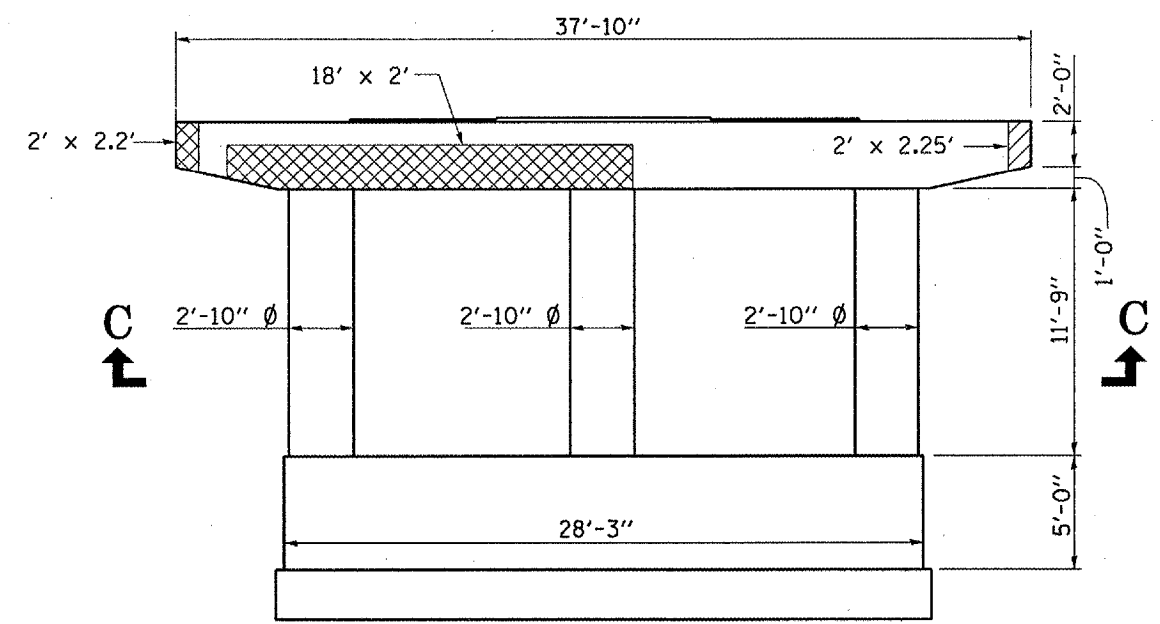
DATE 01/17/2006 DRAWN BY RLW



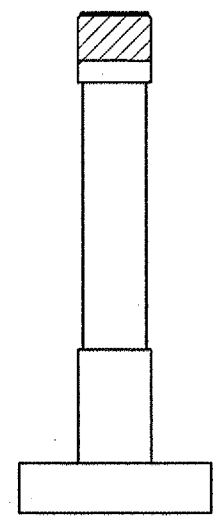
**VIEW C-C**



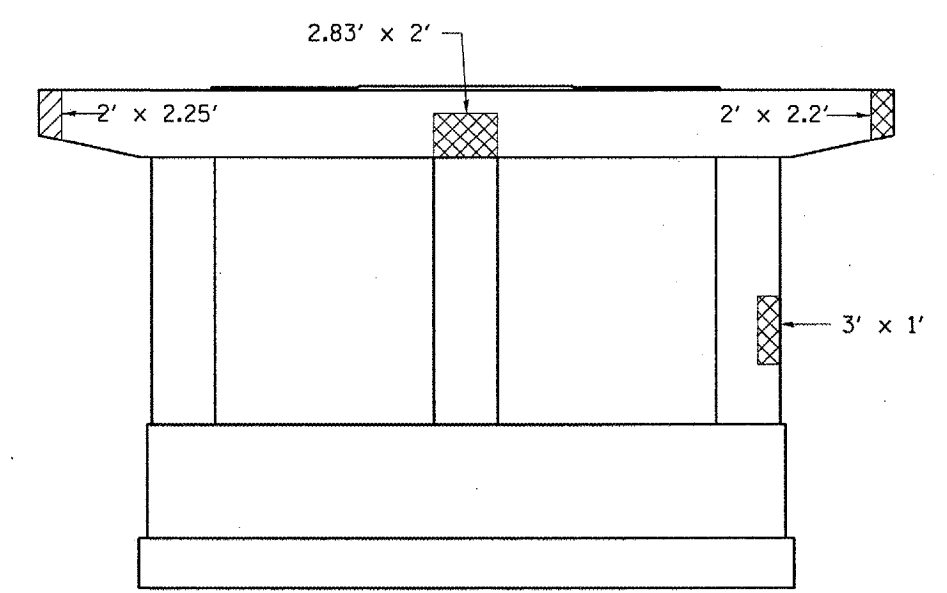
**WEST END**



**SOUTH FACE**



**EAST END**



**NORTH FACE**

**PIER #3**  
**050-0078 NB**

*BILL OF MATERIAL*

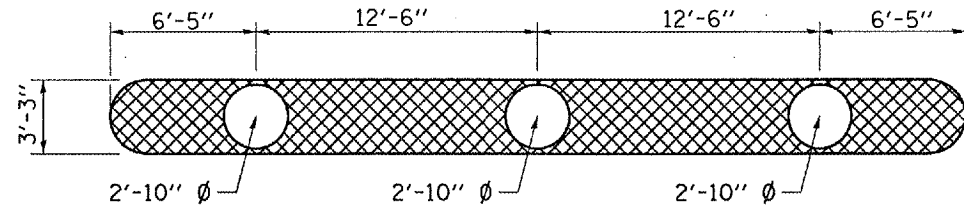
Item	Unit	Total
STRUCTURAL REPAIR OF CONCRETE, DEPTH ≤ 5"	SQ. FT.	94
STRUCUTRAL REPAIR OF CONCRETE, DEPTH > 5"	SQ. FT.	15.5

REVISIONS	DATE
NAME	

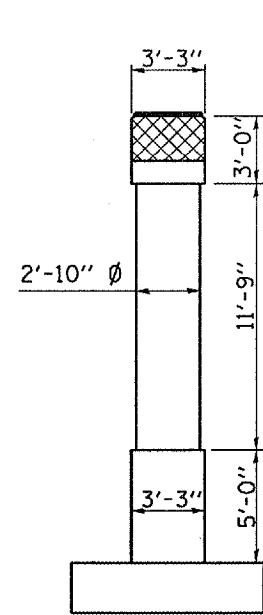
ILLINOIS DEPARTMENT OF TRANSPORTATION  
**PIER REPAIR DETAILS**  
**PIER #3 S.N. 050-0078 NBL**  
 IL ROUTE 251 OVER INTERSTATE ROUTE 80  
 F.A.I. ROUTE 80 SECTION (50-2HB)1-1  
 LASALLE COUNTY  
 STATION 569+41.10  
 DATE 01/17/2006 DRAWN BY RLW

DATE: 01/17/2006  
 c:/projects/cmain07/cm305/details.dgn

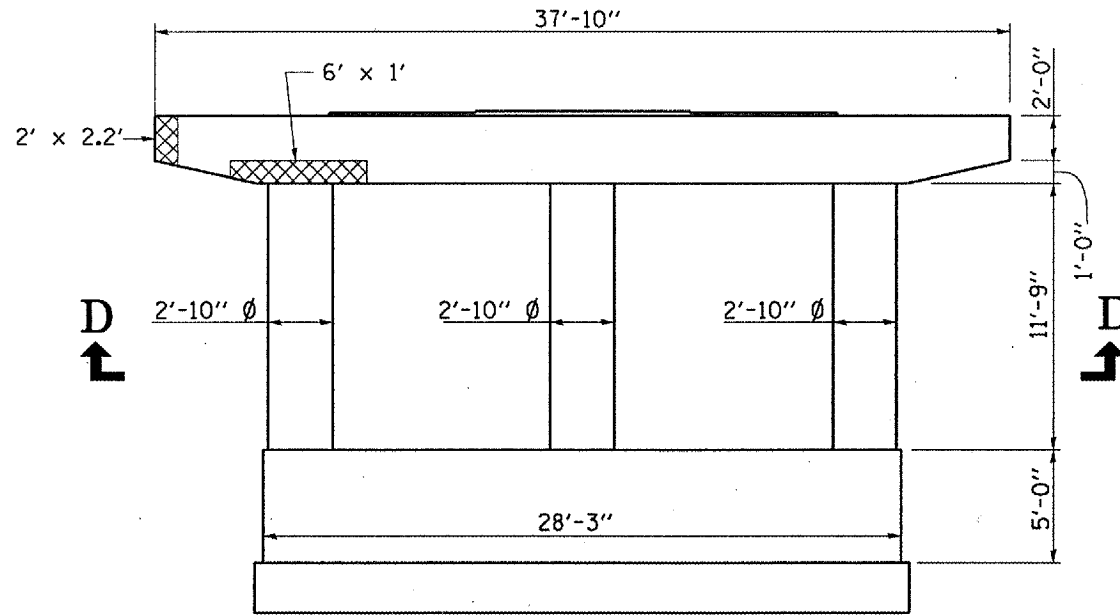
F.A.I. RTE.	SECTION	COUNTY	TOTAL SHEETS	SHEET NO.
80	(50-2HB)I-1	LASALLE	26	15
ILLINOIS			STATE PROJECT	



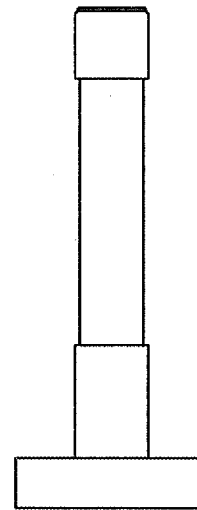
**VIEW D-D**



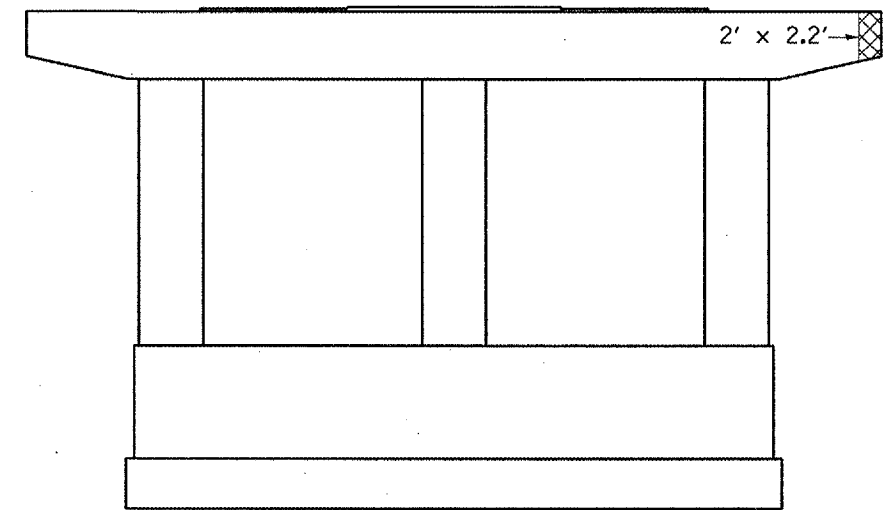
**WEST END**



**SOUTH FACE**



**EAST END**



**NORTH FACE**

**PIER #1**

**050-0077 SB**

*BILL OF MATERIAL*

Item	Unit	Total
STRUCTURAL REPAIR OF CONCRETE, DEPTH ≤ 5"	SQ. FT.	123

REVISIONS	
NAME	DATE

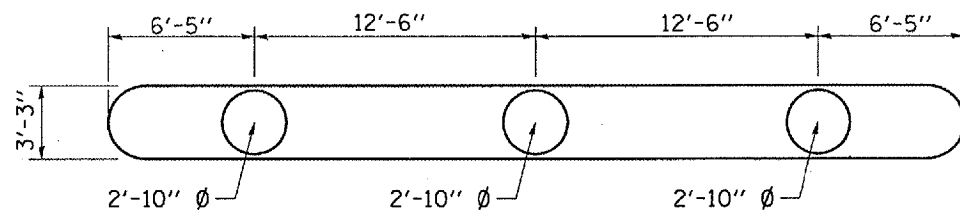
ILLINOIS DEPARTMENT OF TRANSPORTATION  
**PIER REPAIR DETAILS**  
**PIER #1 S.N. 050-0077 SBL**  
 IL ROUTE 251 OVER INTERSTATE ROUTE 80  
 F.A.I. ROUTE 80 SECTION (50-2HB)I-1  
 LASALLE COUNTY  
 STATION 569 + 41.10

DATE 01/17/2006

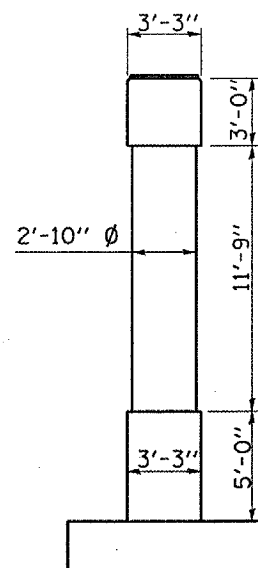
DRAWN BY RLW

DATE: 01/17/2006  
 c:/projects/cmain07/cm305/details.dgn

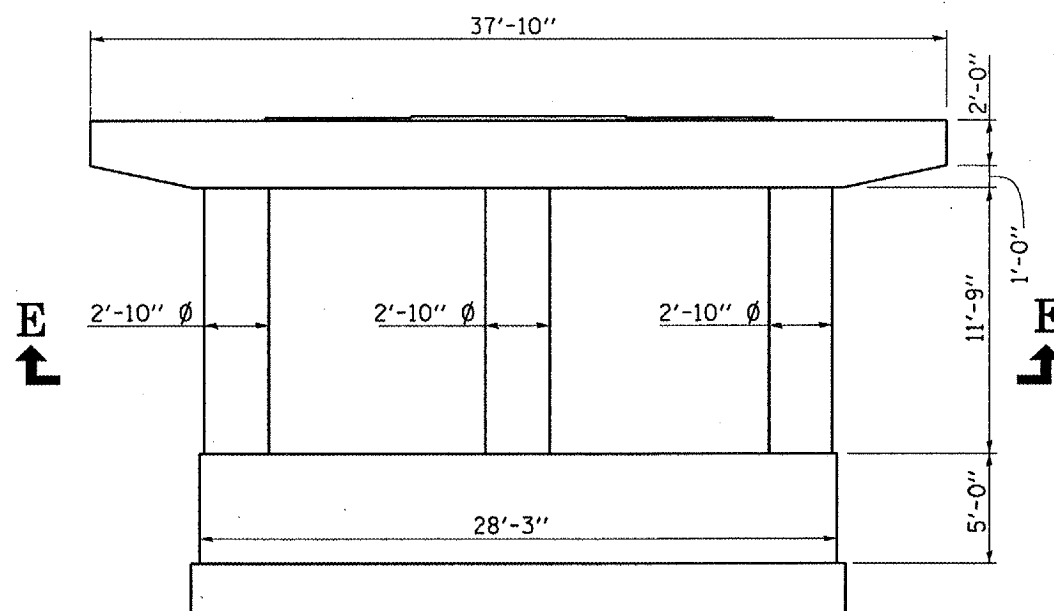
F.A.I. RTE.	SECTION	COUNTY	TOTAL SHEETS	SHEET NO.
80	(50-2HB)I-1	LASALLE	26	16
ILLINOIS			STATE PROJECT	



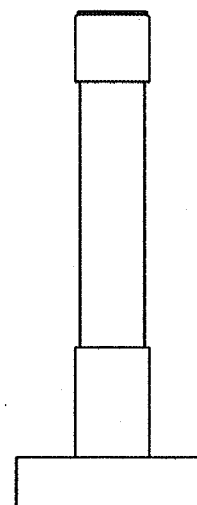
**VIEW E-E**



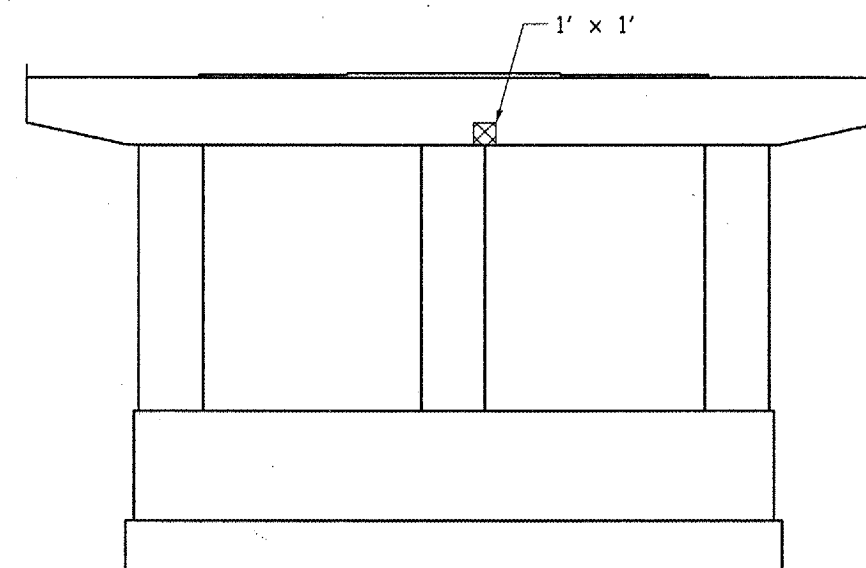
**WEST END**



**SOUTH FACE**



**EAST END**



**NORTH FACE**

**BILL OF MATERIAL**

Item	Unit	Total
STRUCTURAL REPAIR OF CONCRETE, DEPTH $\leq$ 5"	SQ. FT.	1

**PIER #2**

**050-0077 SB**

REVISIONS	
NAME	DATE

ILLINOIS DEPARTMENT OF TRANSPORTATION  
**PIER REPAIR DETAILS**  
**PIER #2 S.N. 050-0077 SBL**  
 IL ROUTE 251 OVER INTERSTATE ROUTE 80  
 F.A.I. ROUTE 80 SECTION (50-2HB)I-1  
 LASALLE COUNTY  
 STATION 569+41.10

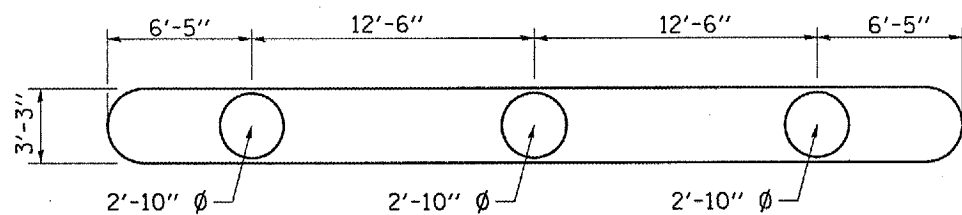
DATE 01/17/2006

DRAWN BY RLW

DATE: 01/17/2006  
 c:/projects/cmain07/cm305/details.dgn



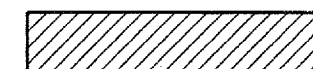
F.A.I. RTE.	SECTION	COUNTY	TOTAL SHEETS	SHEET NO.
80	(50-2HB)I-1	LASALLE	26	17
ILLINOIS			STATE PROJECT	



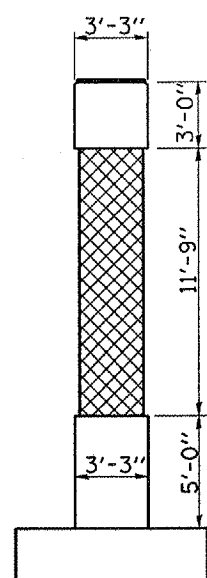
**VIEW F-F**



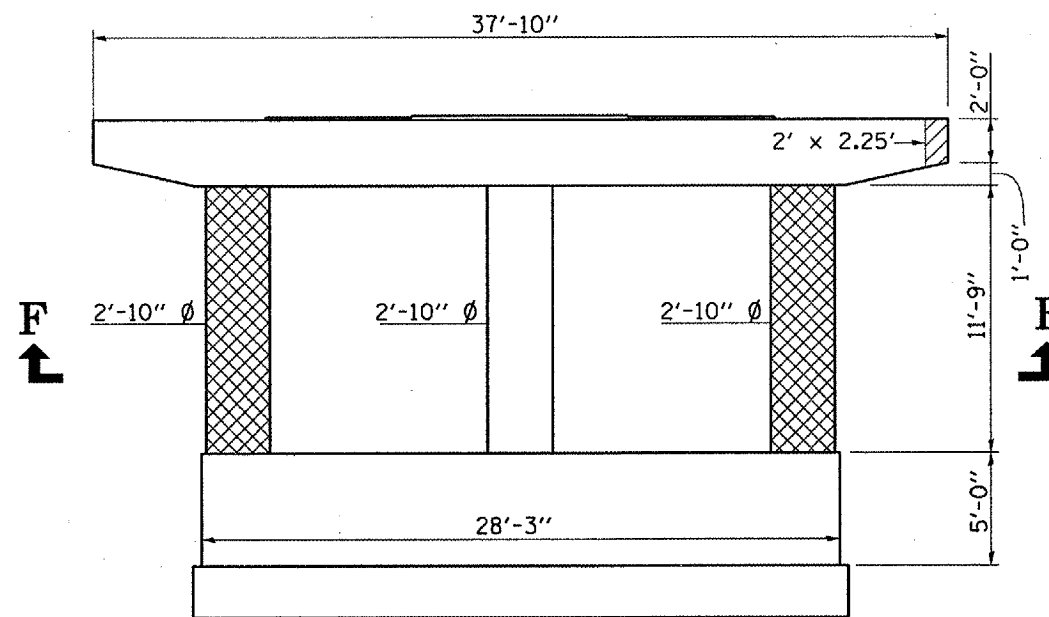
STRUCTURAL REPAIR OF CONCRETE, DEPTH  $\leq$  5"



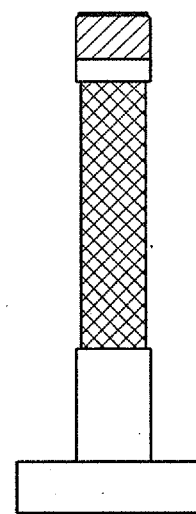
STRUCTURAL REPAIR OF CONCRETE, DEPTH  $>$  5"



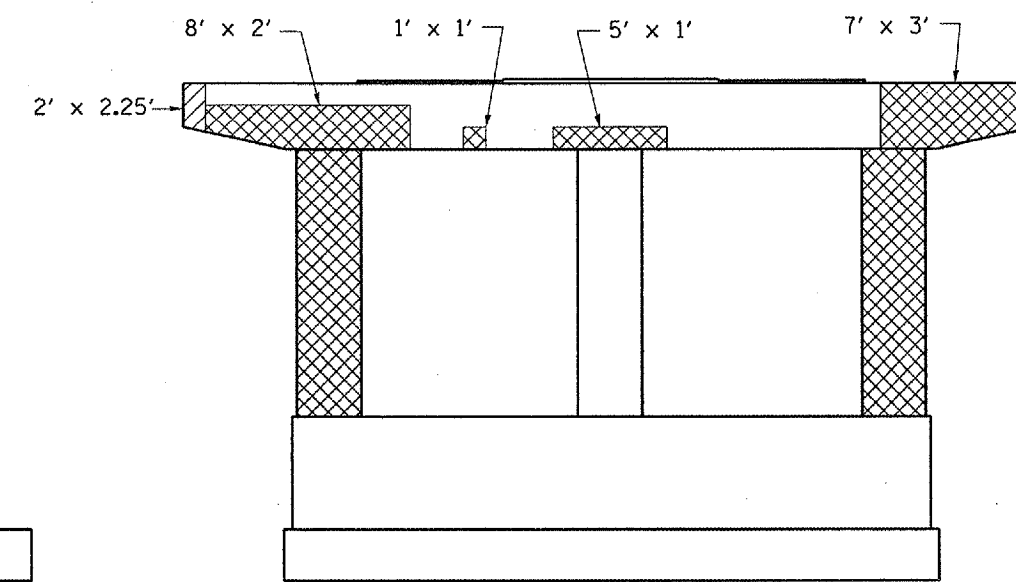
**WEST END**



**SOUTH FACE**



**EAST END**



**NORTH FACE**

**PIER #3**

**050-0077 SB**

*BILL OF MATERIAL*

Item	Unit	Total
STRUCTURAL REPAIR OF CONCRETE, DEPTH $\leq$ 5"	SQ. FT.	243
STRUCUTRAL REPAIR OF CONCRETE, DEPTH $>$ 5"	SQ. FT.	15.5

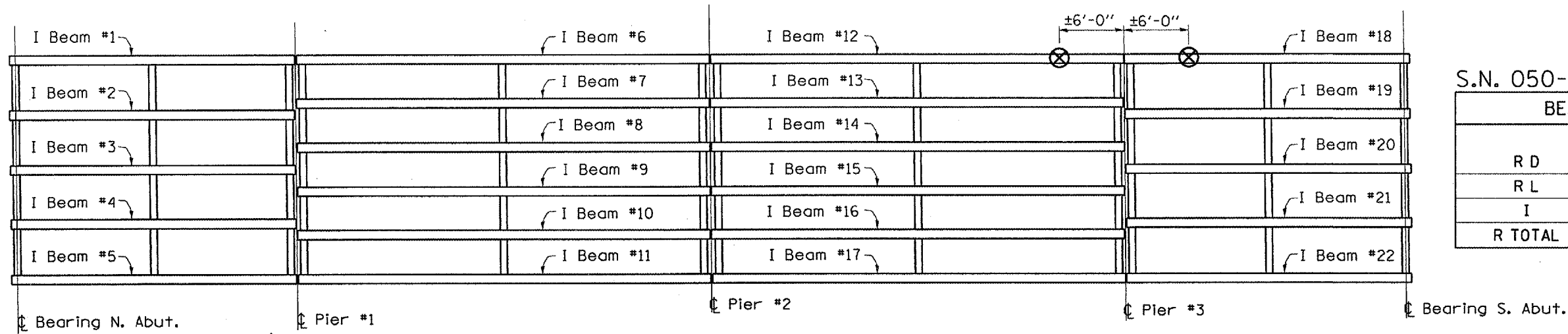
REVISIONS	DATE
NAME	

ILLINOIS DEPARTMENT OF TRANSPORTATION  
**PIER REPAIR DETAILS**  
**PIER #3 S.N. 050-0077 SBL**  
 IL ROUTE 251 OVER INTERSTATE ROUTE 80  
 F.A.I. ROUTE 80 SECTION (50-2HB)I-1  
 LASALLE COUNTY  
 STATION 569 + 41.10

DATE 01/17/2006

DRAWN BY RLV

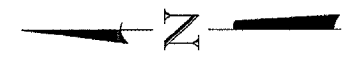
DATE: 01/17/2006  
 c:/projects/cmin07/cm305/details.dgn



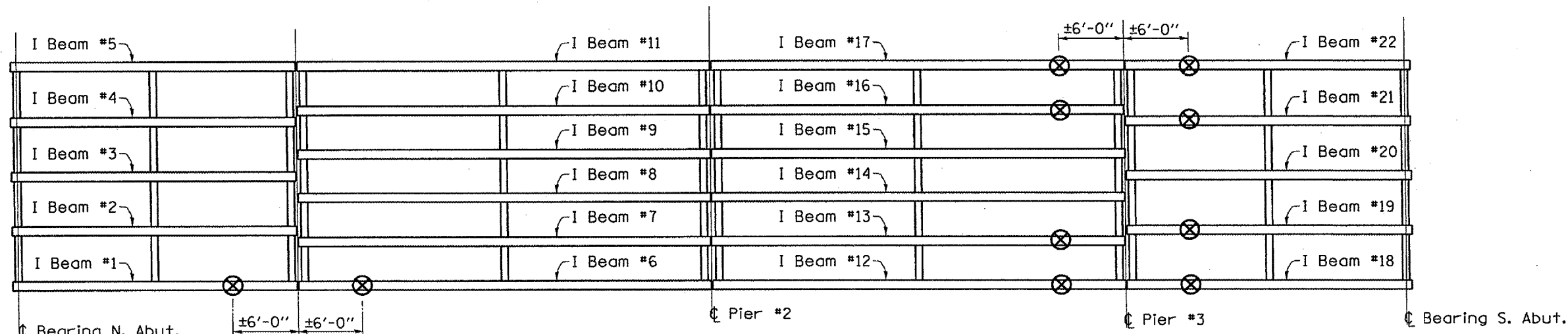
S.N. 050-0078 NBL (2 LOCATIONS)

		SPAN 3	SPAN 4
R D	(K)	47.7	35.3
R L	(K)	35.3	40.2
I	(K)	9.6	12.2
R TOTAL	(K)	92.6	87.7

**S.N. 050-0078  
NORTHBOUND LANES**



NOTE: Temporary shoring and cribbing to be used during "Structural Repair of Concrete" operations



**S.N. 050-0077  
SOUTHBOUND LANES**

S.N. 050-0077 SBL (10 LOCATIONS)

		SPAN 1	SPAN 2	SPAN 3	SPAN 4
R D	(K)	35.3	47.7	47.7	35.3
R L	(K)	40.2	35.3	35.3	40.2
I	(K)	12.2	9.6	9.6	12.2
R TOTAL	(K)	87.7	92.6	92.6	87.7

⊗ LOCATIONS OF TEMPORARY SHORING & CRIBBING

*BILL OF MATERIAL*

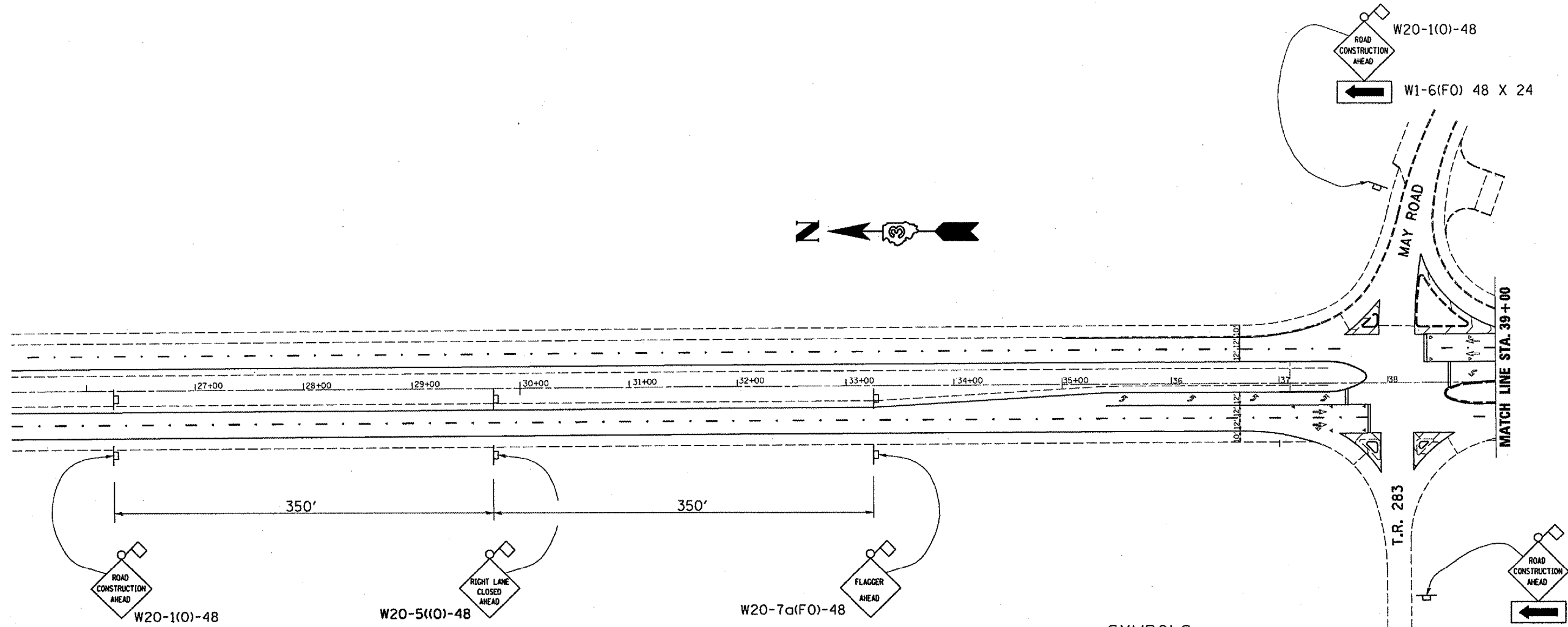
Item	Unit	Total
TEMPORARY SHORING AND CRIBBING	L SUM	1

REVISIONS	
NAME	DATE

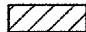




ILLINOIS DEPARTMENT OF TRANSPORTATION  
**FRAMING PLAN**  
**TEMPORARY SHORING & CRIBBING**  
 IL ROUTE 251 OVER INTERSTATE ROUTE 80  
 F.A.I. ROUTE 80 SECTION (50-2HB)I-1  
 LASALLE COUNTY  
 STATION 569+41.10  
 DATE 01/17/2006 DRAWN BY RLW

DATE: 01/17/2006  
 c:/projects/cmain07/cm305/details.dgn

F.A.I. RTE.	SECTION	COUNTY	TOTAL SHEETS	SHEET NO.
80	(50-2HB)I-1	LASALLE	26	19
		ILLINOIS	STATE PROJECT	



**SYMBOLS**

-  Work area
-  Sign
-  Type III barricades or drums with steady burning monodirectional light
-  Drums with steady burning monodirectional light @ 25' cts.
-  Arrow Board



REVISIONS	
NAME	DATE

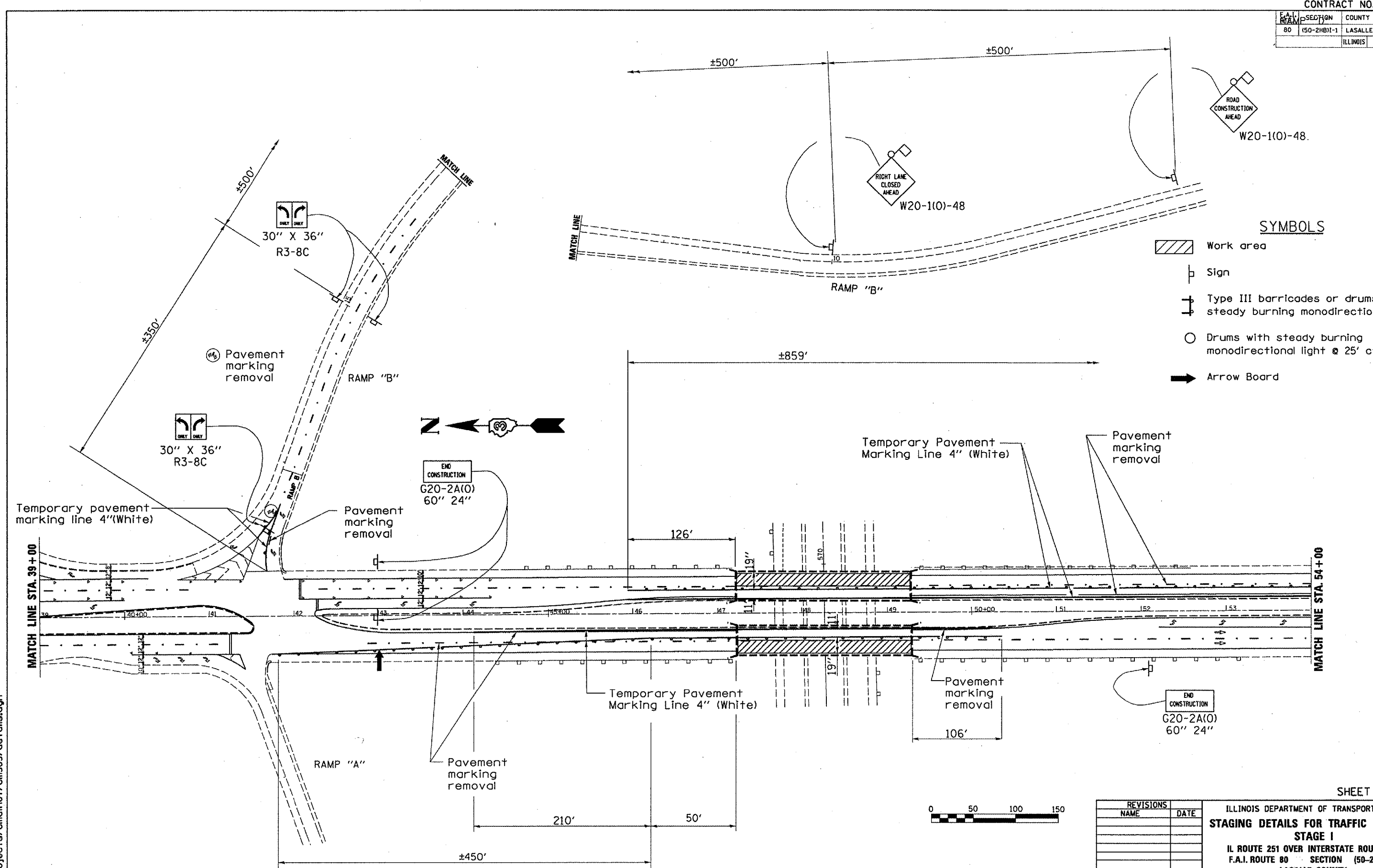
ILLINOIS DEPARTMENT OF TRANSPORTATION  
**STAGING DETAILS FOR TRAFFIC CONTROL**  
**STAGE I**  
 IL ROUTE 251 OVER INTERSTATE ROUTE 80  
 F.A.I. ROUTE 80 SECTION (50-2HB)I-1  
 LASALLE COUNTY  
 STATION 589+41.10

DATE 01/17/2006 DRAWN BY RLW

NOTE: Use this sheet with Traffic Control and Protection Standard 701601

DATE: 01/17/2006  
 c:/projects/cmln07/cm305/details.dgn

F.A.I. ROUTE	SECTION	COUNTY	TOTAL SHEETS	SHEET NO.
80	(50-2HB)I-1	LASALLE	26	20
		ILLINOIS	STATE PROJECT	



**SYMBOLS**

- Work area
- Sign
- Type III barricades or drums with steady burning monodirectional light
- Drums with steady burning monodirectional light @ 25' cts.
- Arrow Board

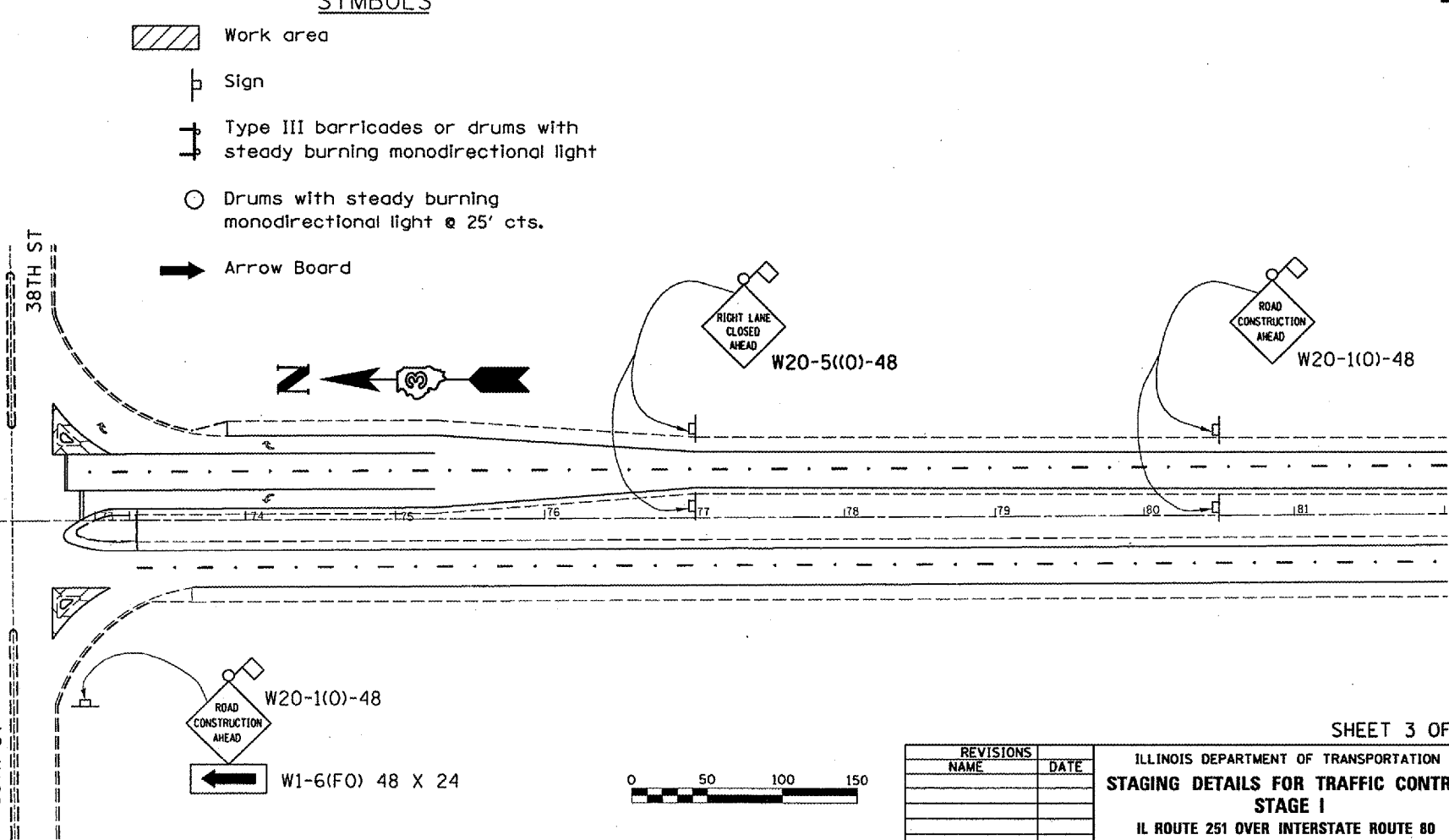
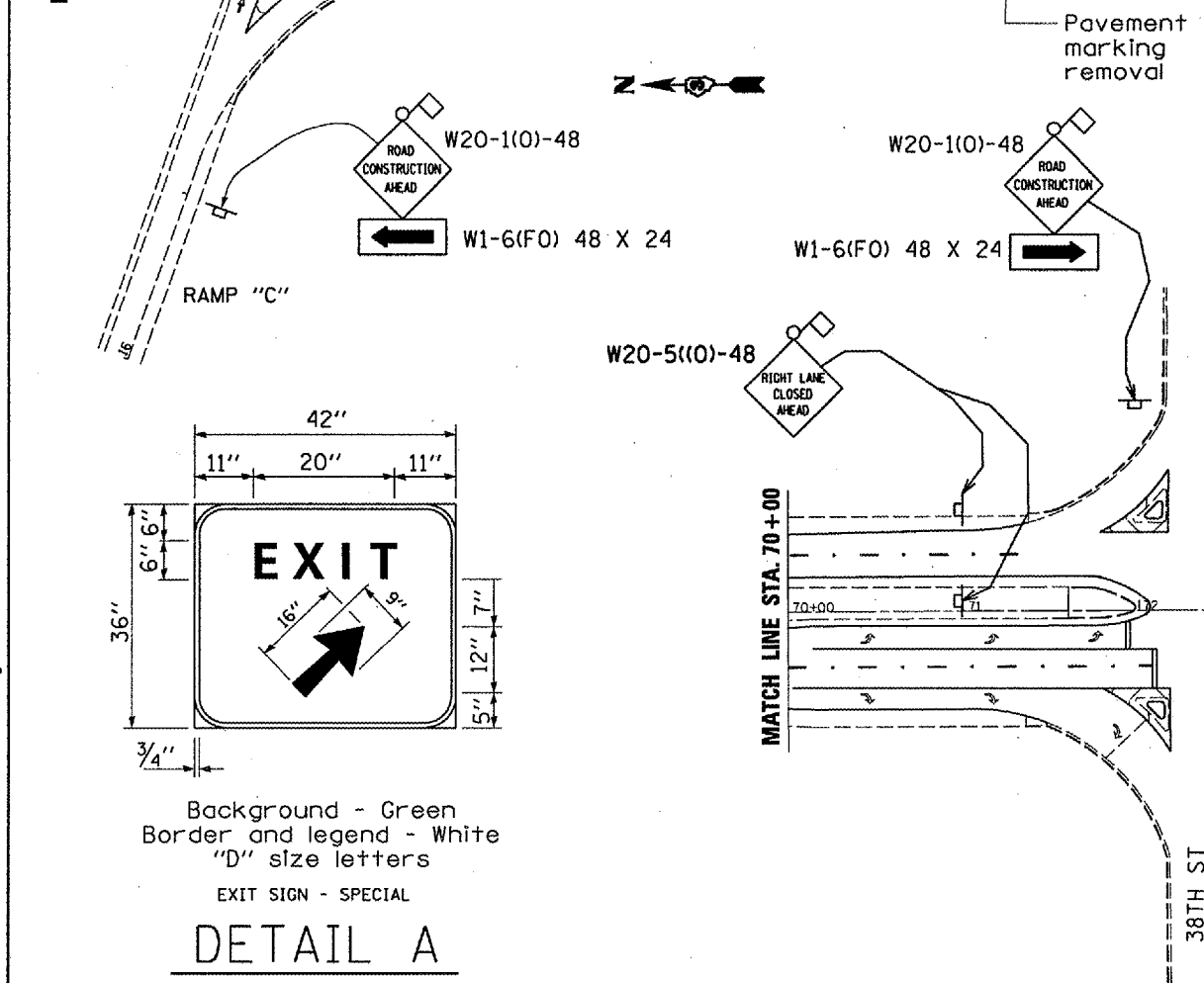
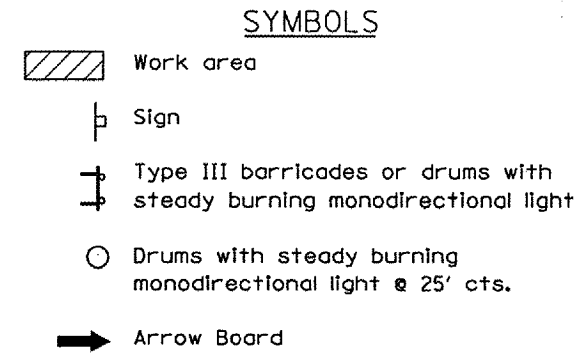
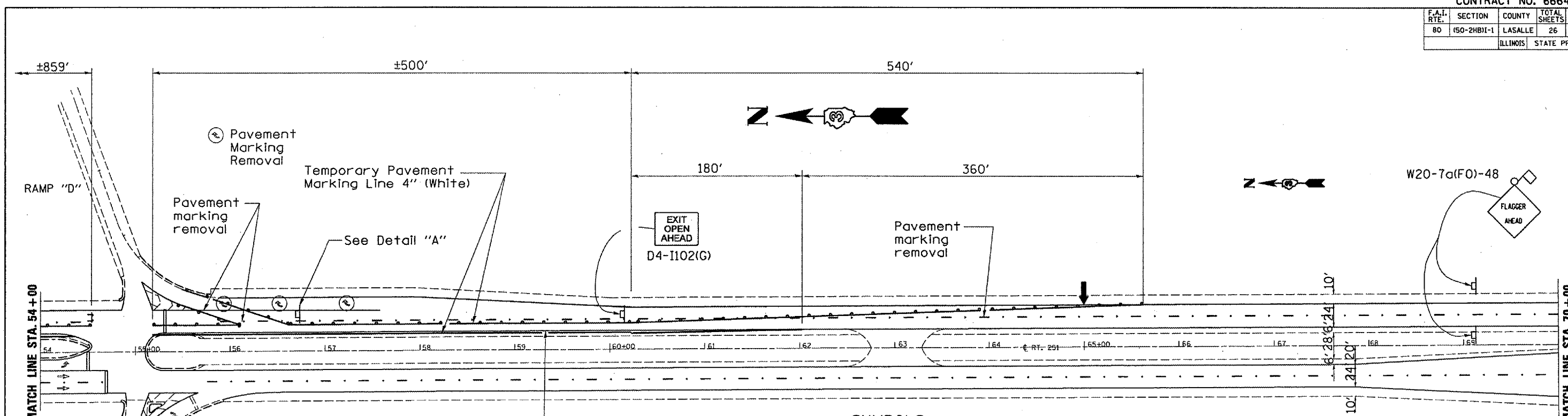


NOTE: Use this sheet with Traffic Control and Protection Standard 701601

DATE: 01/17/2006  
c:/projects/cmain07/cm305/details.dgn

REVISIONS	
NAME	DATE

F.A.I. RTE.	SECTION	COUNTY	TOTAL SHEETS	SHEET NO.
80	(50-2HB)I-1	LASALLE	26	21
ILLINOIS			STATE PROJECT	



DATE: 01/17/2006  
c:\projects\cm305\details.dgn

NOTE: Use this sheet with Traffic Control and Protection Standard 701601



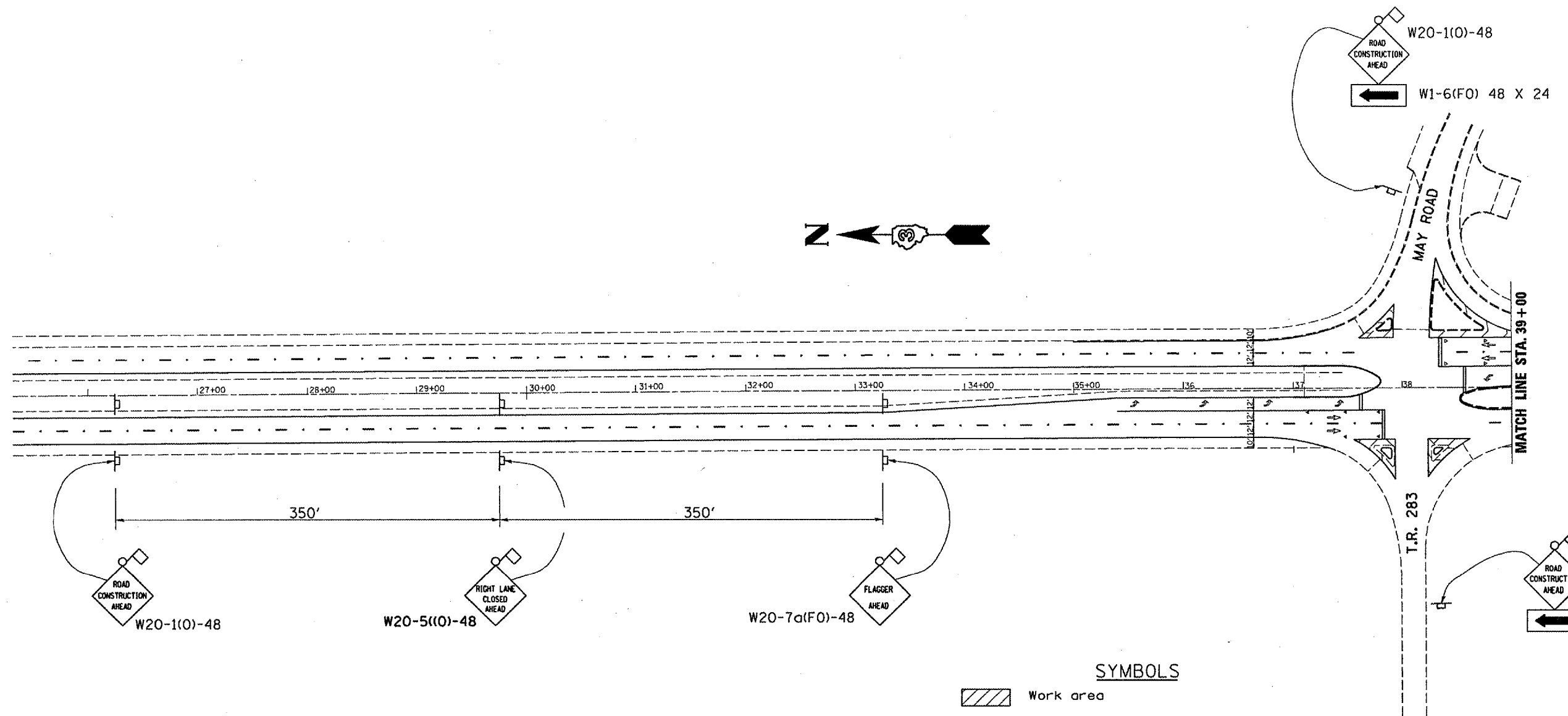
REVISIONS	DATE
NAME	

SHEET 3 OF 3

ILLINOIS DEPARTMENT OF TRANSPORTATION  
**STAGING DETAILS FOR TRAFFIC CONTROL  
STAGE I**  
IL ROUTE 251 OVER INTERSTATE ROUTE 80  
F.A.I. ROUTE 80 SECTION (50-2HB)I-1  
LASALLE COUNTY  
STATION 569+41.10

DATE 01/17/2006 DRAWN BY RLW

F.A.I. RTE.	SECTION	COUNTY	TOTAL SHEETS	SHEET NO.
80	(50-2HB)I-1	LASALLE	26	22
ILLINOIS			STATE PROJECT	



**SYMBOLS**

- Work area
- Sign
- Type III barricades or drums with steady burning monodirectional light
- Drums with steady burning monodirectional light @ 25' cts.
- Arrow Board



REVISIONS	DATE

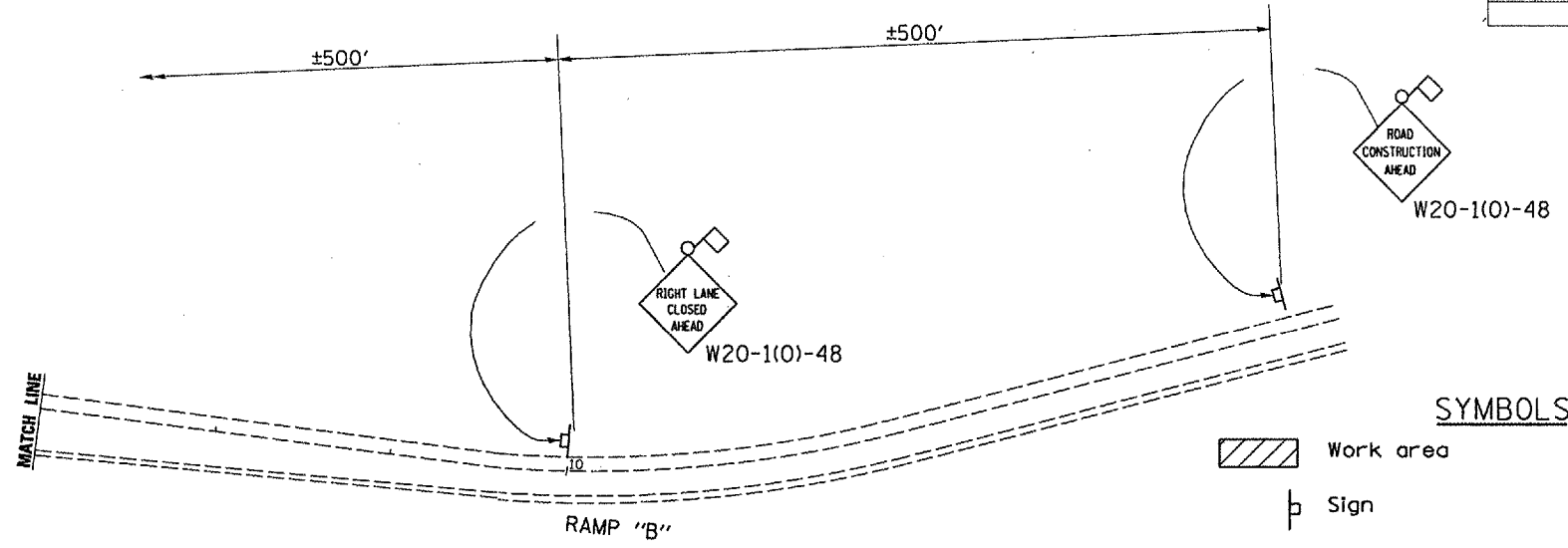
ILLINOIS DEPARTMENT OF TRANSPORTATION  
**STAGING DETAILS FOR TRAFFIC CONTROL**  
**STAGE II**  
 IL ROUTE 251 OVER INTERSTATE ROUTE 80  
 F.A.I. ROUTE 80 SECTION (50-2HB)I-1  
 LASALLE COUNTY  
 STATION 569+41.10

DATE 01/17/2006 DRAWN BY RLW

NOTE: Use this sheet with Traffic Control and Protection Standard 701601

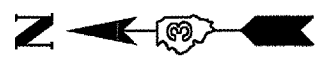
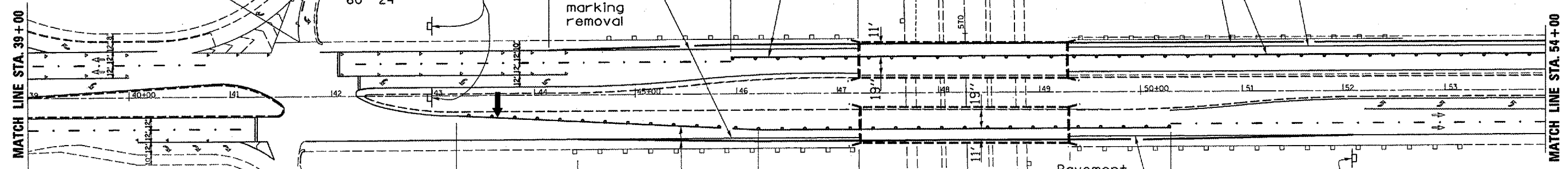
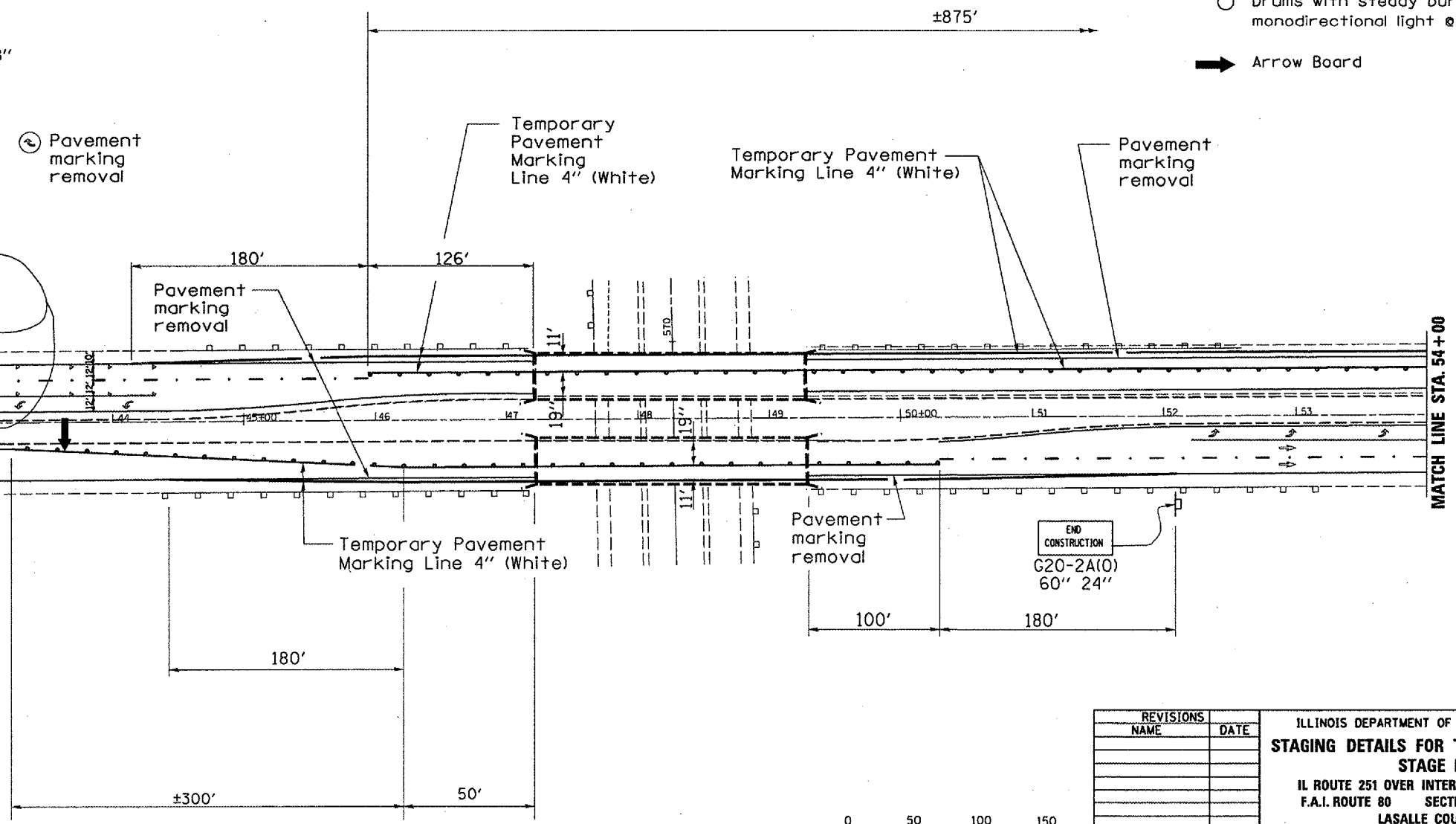
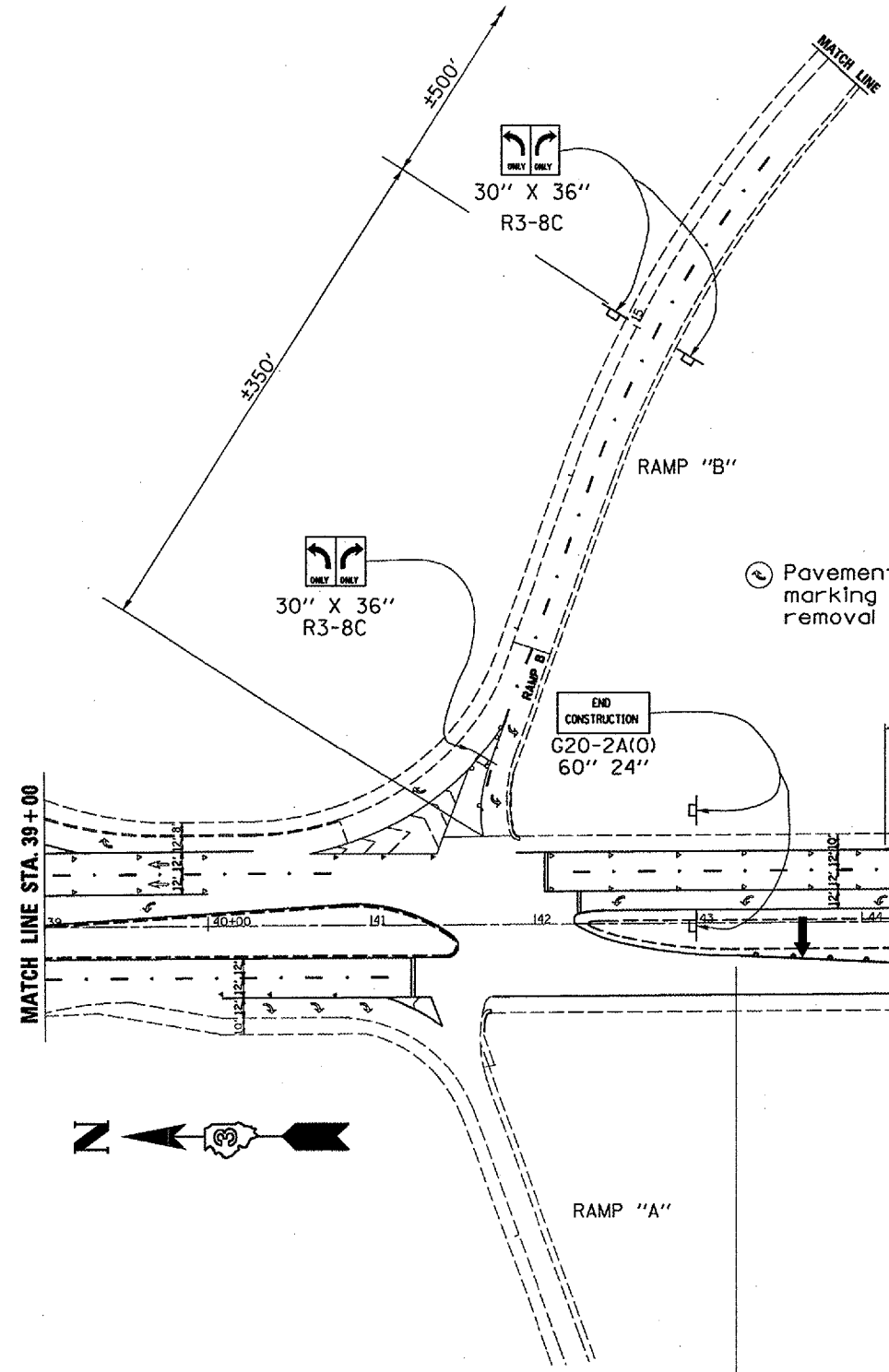
DATE: 01/17/2006  
 c:/projects/cmain07/cm305/details.dgn

F.A.I. PLAN	SECTION	COUNTY	TOTAL SHEETS	SHEET NO.
80	(50-2HB)I-1	LASALLE	26	23
		ILLINOIS	STATE PROJECT	



**SYMBOLS**

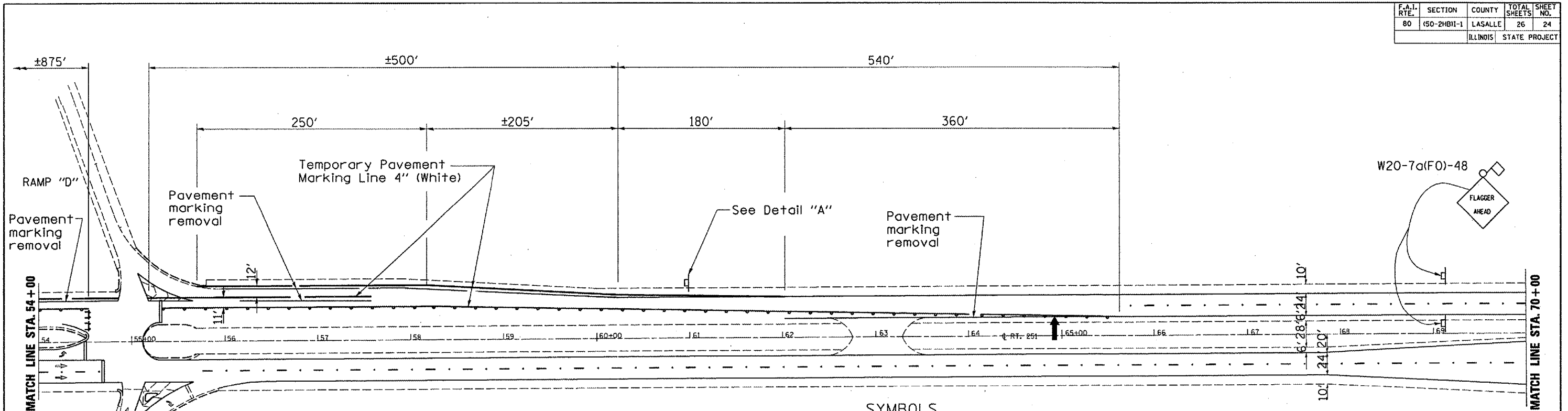
- Work area
- Sign
- Type III barricades or drums with steady burning monodirectional light
- Drums with steady burning monodirectional light @ 25' cts.
- Arrow Board



DATE: 01/17/2006  
c:/projects/cmain07/cm305/details.dgn

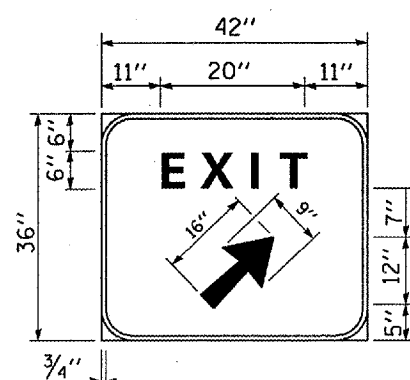
REVISIONS	
NAME	DATE

F.A.I. RTE.	SECTION	COUNTY	TOTAL SHEETS	SHEET NO.
80	(50-2HB)I-1	LASALLE	26	24
ILLINOIS			STATE PROJECT	



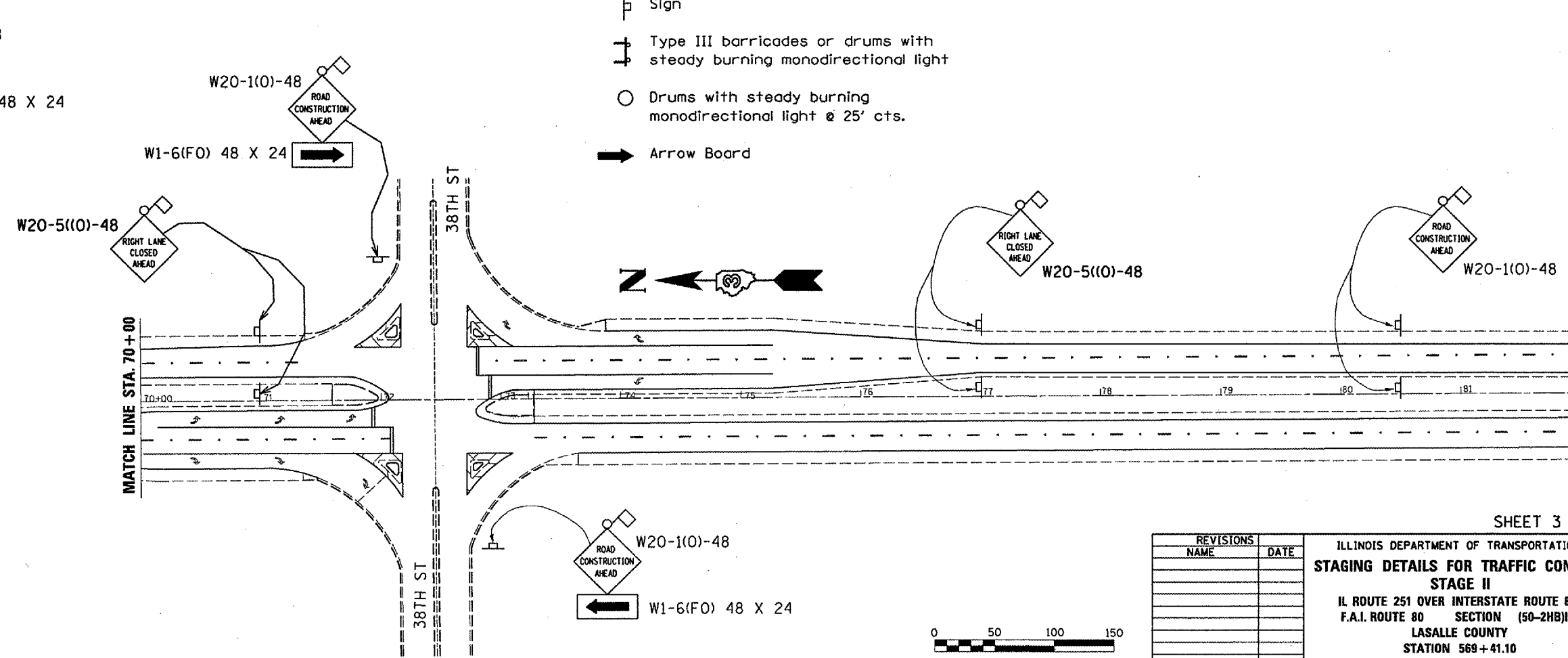
**SYMBOLS**

- Work area
- Sign
- Type III barricades or drums with steady burning monodirectional light
- Drums with steady burning monodirectional light @ 25' cts.
- Arrow Board



Background - Green  
 Border and legend - White  
 "D" size letters  
 EXIT SIGN - SPECIAL

**DETAIL A**



DATE: 01/17/2006  
 c:/projects/main07/cm305/details.dgn

REVISIONS	
NAME	DATE

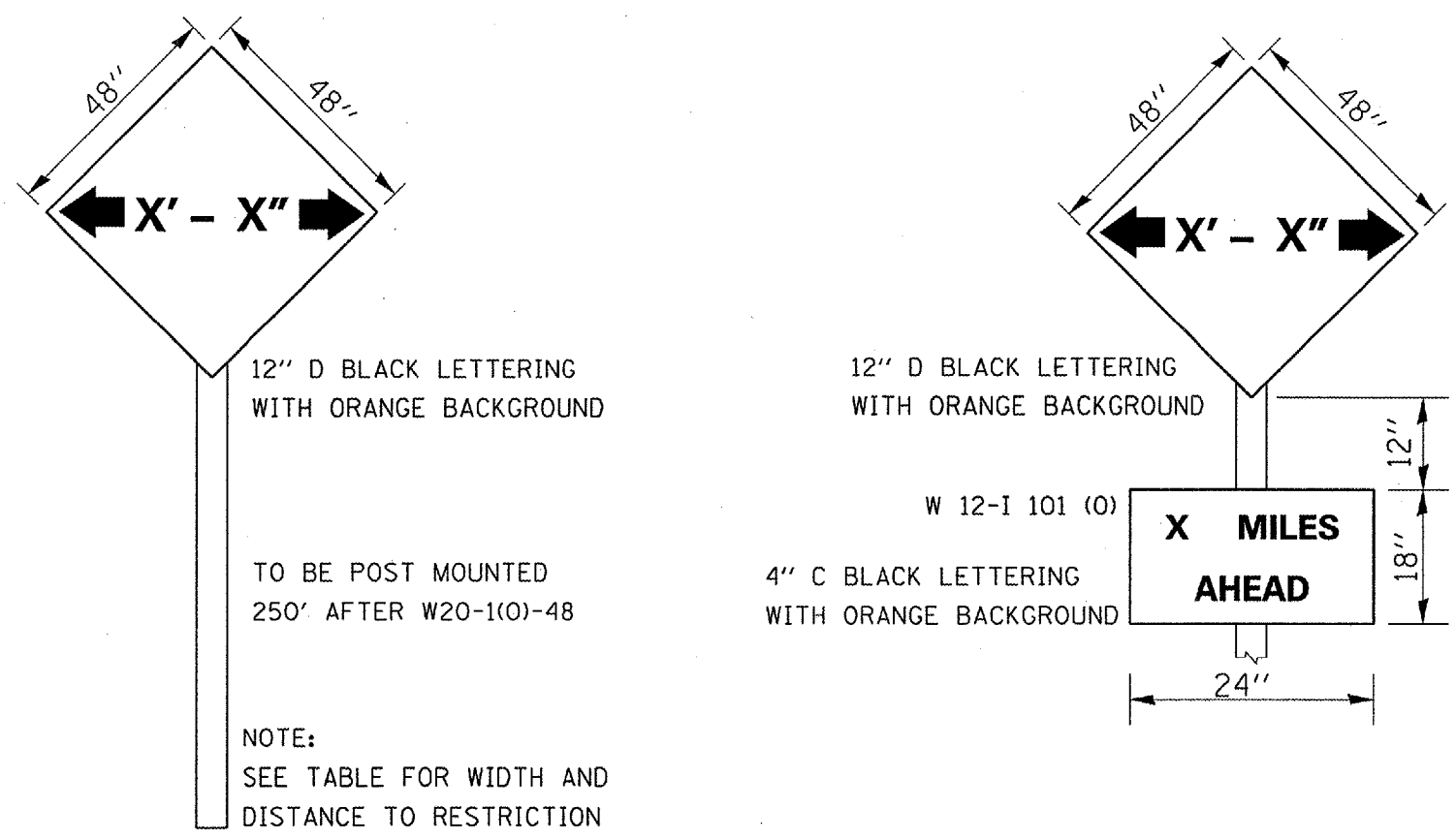
SHEET 3 OF 3

ILLINOIS DEPARTMENT OF TRANSPORTATION  
**STAGING DETAILS FOR TRAFFIC CONTROL  
 STAGE II**  
 IL ROUTE 251 OVER INTERSTATE ROUTE 80  
 F.A.I. ROUTE 80 SECTION (50-2HB)I-1  
 LASALLE COUNTY  
 STATION 569+41.10

DATE 01/17/2006 DRAWN BY RLW

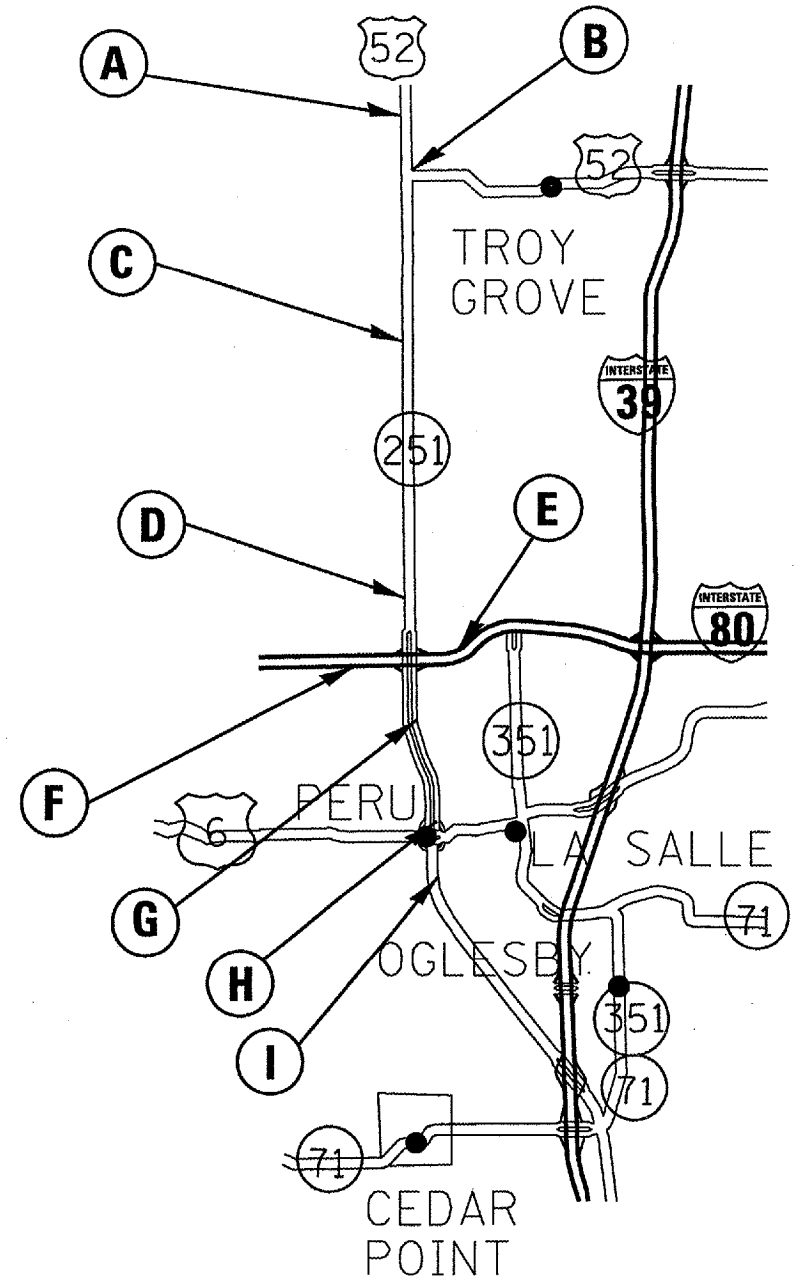






## WIDTH RESTRICTION DETAILS

TABLE OF WIDTH RESTRICTION SIGNS				
NO. OF SIGNS	TYPE OF SIGN	LOCATION	LOCATION OF SIGNS	WIDTH RESTRICTION & MILES AHEAD
1	WIDTH RESTRICTION WITH W12-1101 (O)	A	IL 251 SB, 500' NORTH OF US 52	9'-6" 7.1 MILES AHEAD
1	WIDTH RESTRICTION WITH W12-1101 (O)	B	NE CORNER OF IL 251 AND US 52	9'-6" 7 MILES AHEAD
1	WIDTH RESTRICTION WITH W12-1101 (O)	C	IL 251 SB, 3 MILES NORTH OF I-80	9'-6" 3 MILES AHEAD
2	WIDTH RESTRICTION WITH W12-1101 (O)	D	IL 251 SB, WITHIN TRAFFIC CONTROL FOR BRIDGE REPAIR 200' AFTER RCA SIGN	9'-6"
2	WIDTH RESTRICTION	E	I-80 WBL, 1000' EAST OF OFF-RAMP TO IL 251	9'-6" IL 251 SB
1	WIDTH RESTRICTION	F	I-80 EBL, 1000' WEST OF OFF-RAMP TO IL 251	9'-6" IL 251 NB
2	WIDTH RESTRICTION	G	IL 251 NB WITHIN TRAFFIC CONTROL FOR BRIDGE REPAIR 200' AFTER RCA SIGN	9'-6"
1	WIDTH RESTRICTION WITH W12-1101 (O)	H	IL 251 NB, NE CORNER IL 251 & US 6	9'-6" 2.5 MILES AHEAD
1	WIDTH RESTRICTION WITH W12-1101 (O)	I	IL 251 NB, 1000' SOUTH OF US 6	9'-6" 2.7 MILES AHEAD



**NOTE:**  
THE CONTRACTOR SHALL FURNISH ERECT AND MAINTAIN THE ABOVE SIGNS.

**WIDTH RESTRICTION SIGNING SHALL BE REQUIRED FOR STAGE II OPERATIONS "ONLY"**

REVISIONS	
NAME	DATE

ILLINOIS DEPARTMENT OF TRANSPORTATION

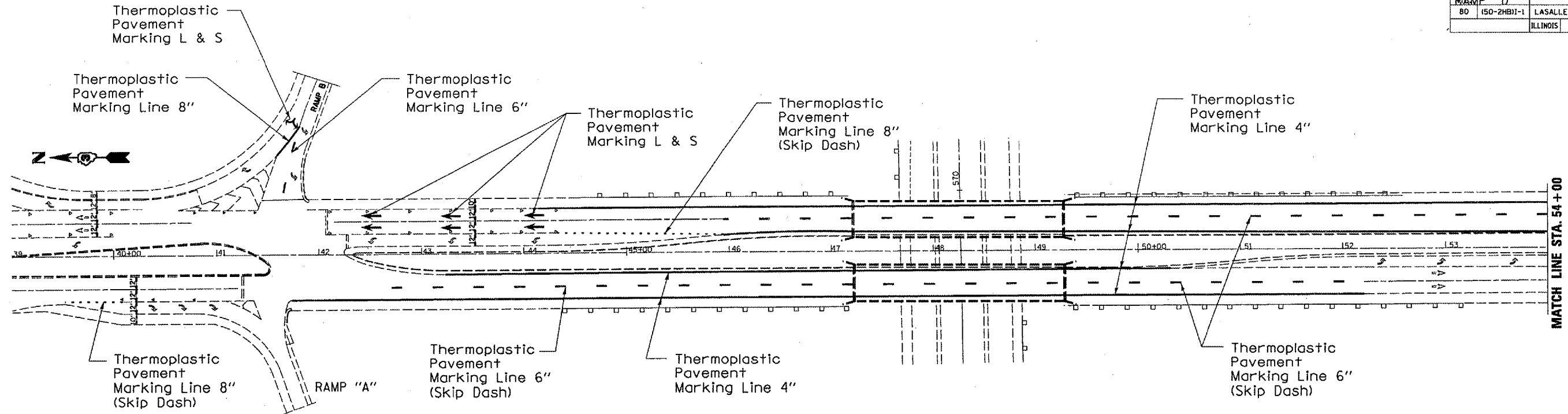
**WIDTH RESTRICTION SIGNING**

IL ROUTE 251 OVER INTERSTATE ROUTE 80  
F.A.I. ROUTE 80 SECTION (50-2HB)1-1  
LASALLE COUNTY  
STATION 569+41.10

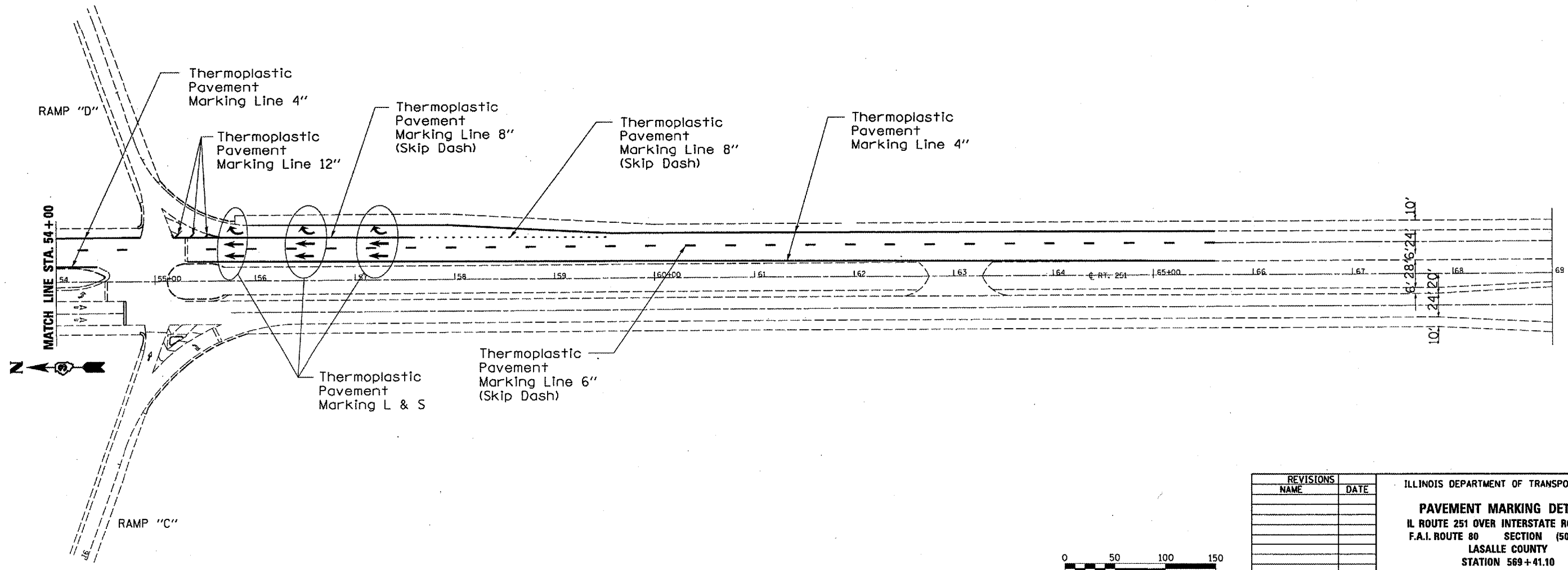
DATE 01/17/2006 DRAWN BY RLW

DATE: 01/17/2006  
c:\projects\main07\cm305\details.dgn

F.A.I. ROUTE	SECTION	COUNTY	TOTAL SHEETS	SHEET NO.
80	150-2HB1-1	LASALLE	26	26
		ILLINOIS	STATE PROJECT	



MATCH LINE STA. 54+00



MATCH LINE STA. 54+00

6' 28' 6" 24' 10'  
10' 24' 20'

DATE: 01/17/2006  
c:/projects/cmain07/cm305/details.dgn

REVISIONS	
NAME	DATE

ILLINOIS DEPARTMENT OF TRANSPORTATION  
**PAVEMENT MARKING DETAILS**  
 IL ROUTE 251 OVER INTERSTATE ROUTE 80  
 F.A.I. ROUTE 80 SECTION (50-2HB)1-1  
 LASALLE COUNTY  
 STATION 569+41.10  
 DATE 01/17/2006 DRAWN BY RLW

