

F.A.P. RTE.	SECTION	COUNTY	TOTAL SHEETS	SHEET NO.
315	55-2	MCDONOUGH	1025	1

D-94-013-02 <sup>#6</sup> 1031

STATE OF ILLINOIS  
DEPARTMENT OF TRANSPORTATION  
DIVISION OF HIGHWAYS

# PROPOSED HIGHWAY PLANS

F.A.P. ROUTE 315 (IL. ROUTE 336)  
SECTION 55-2  
PROJECT NO. NHF-0315 (046)  
NEW CONSTRUCTION; 4-LANE EXPRESSWAY  
MCDONOUGH COUNTY  
C94-013-02



TOTAL SHEETS = 1025

STATE OF ILLINOIS  
DEPARTMENT OF TRANSPORTATION  
DIVISION OF HIGHWAYS

SUBMITTED 3/31/2006

*Joseph E. Crowe* DISTRICT ENGINEER

20

ENGINEER OF DESIGN AND ENVIRONMENT

20

DIRECTOR, DIVISION OF HIGHWAYS

*Kenneth M. Coulter* 3-31-06  
KENNETH M. COULTER  
062-038839  
EXP. DATE 11/30/05

PRINTED BY THE AUTHORITY  
OF THE STATE OF ILLINOIS

FOR INDEX OF SHEETS, SEE SHEET NO. 2

LIST OF STANDARDS

202001	515001-02	601001	630301-03	701006-02	000001-04
280001-02	542201	601101	631011-02	701001-01	
285001-01	542206	602301	631026-02	701201-02	BLR 17-3
	542301	602306-01	631031-05	701306-01	BLR 21-6
406001-03	542311	602401-01	635001	701326-02	BLR 22-4
406101-02	542401	602701-01	635006-02	701331-02	BLR 23-1
420401-05	542501	604001-02	635011-01	701406-04	BLR 24-1
442201-01	542511	604101	642001	702001-06	
483001-02	542531-01	606001-02	665001-01	704001-02	
	542546	606006	666001	720001	
	542601	606301-02	667101	720006	
	542606	609006-02	664001-01	720011	
		610001-02	781001-02	780001-01	
		604106	701400-02	781001-02	

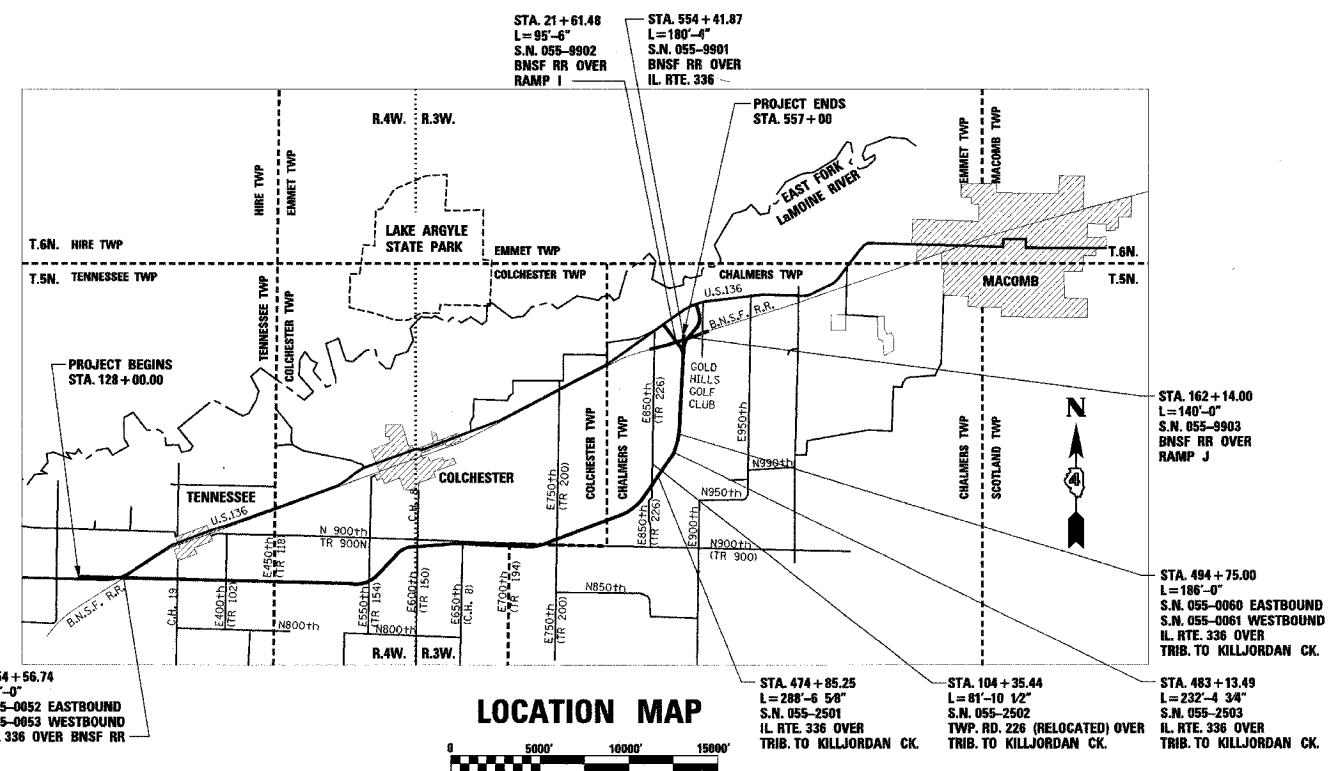
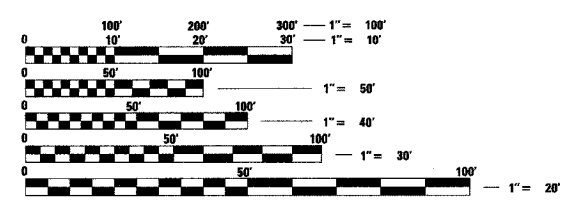
701400-02

DESIGN DESIGNATION

7000 (ADT) (2028) RURAL 2.26 (FD-20)

SURVEY BOOK NOS.

(BOOK NO'S TO BE FURNISHED BY DEPT.)



GROSS LENGTH OF IMPROVEMENT = 42,900 FEET (8.13 MILES)  
NET LENGTH OF IMPROVEMENT = 42,900 FEET (8.13 MILES)

FULL SIZE PLANS HAVE BEEN PREPARED USING STANDARD ENGINEERING SCALES, REDUCED SIZED PLANS WILL NOT CONFORM TO STANDARD SCALES, IN MAKING MEASUREMENTS ON REDUCED PLANS, THE ABOVE SCALES MAY BE USED.

J.U.L.I.E.  
JOINT UTILITY LOCATION INFORMATION FOR EXCAVATION  
1-800-892-0123

- NPDES PERMIT REQUIRED
- QC/QA BITUMINOUS
- QC/QA CONCRETE
- BITUMINOUS SUPERPAVE

REVISED  
5-30-06

DESIGNED BY:



STS Consultants

111 NE Jefferson Ave.  
Peoria, Illinois 61602  
Ph(309)676-8464  
FAX(309)676-5445  
DESIGN FIRM REGISTRATION  
NO. 184-001518

IDOT PROJECT ENGINEER: TOM LACY PHONE: 671-3453  
IDOT LIASON ENGINEER: ELIAS ELDERZI PHONE: 671-3459