

F.A.P. RTE.	SECTION	COUNTY	TOTAL SHEETS	SHEET NO.
315	55-2	MCDONOUGH	1025	1

D-94-013-02 ^{#6} 1031

STATE OF ILLINOIS
DEPARTMENT OF TRANSPORTATION
DIVISION OF HIGHWAYS

PROPOSED HIGHWAY PLANS

F.A.P. ROUTE 315 (IL. ROUTE 336)
SECTION 55-2
PROJECT NO. NHF-0315 (046)
NEW CONSTRUCTION; 4-LANE EXPRESSWAY
MCDONOUGH COUNTY
C94-013-02



LOCATION OF SECTION INDICATED THIS: - [black rectangle] -

TOTAL SHEETS = 1025

STATE OF ILLINOIS
DEPARTMENT OF TRANSPORTATION
DIVISION OF HIGHWAYS

SUBMITTED 3/31/2006

Joseph E. Crowe DISTRICT ENGINEER

20

ENGINEER OF DESIGN AND ENVIRONMENT

20

DIRECTOR, DIVISION OF HIGHWAYS

Kenneth M. Coulter 3-31-06
KENNETH M. COULTER
062-038839
EXP. DATE 11/30/05

PRINTED BY THE AUTHORITY
OF THE STATE OF ILLINOIS

FOR INDEX OF SHEETS, SEE SHEET NO. 2

LIST OF STANDARDS

202001	515001-02	601001	630301-03	701006-02	000001-04
280001-02	542201	601101	631011-02	701001-01	
285001-01	542206	602301	631026-02	701201-02	BLR 17-3
	542301	602306-01	631031-05	701306-01	BLR 21-6
406001-03	542311	602401-01	635001	701326-02	BLR 22-4
406101-02	542401	602701-01	635006-02	701331-02	BLR 23-1
420401-05	542501	604001-02	635011-01	701406-04	BLR 24-1
442201-01	542511	604101	642001	702001-06	
483001-02	542531-01	606001-02	665001-01	704001-02	
	542546	606006	666001	720001	
	542601	606301-02	667101	720006	
	542606	609006-02	664001-01	720011	
		610001-02	780001-01	781001-02	
		604106	701400-02		

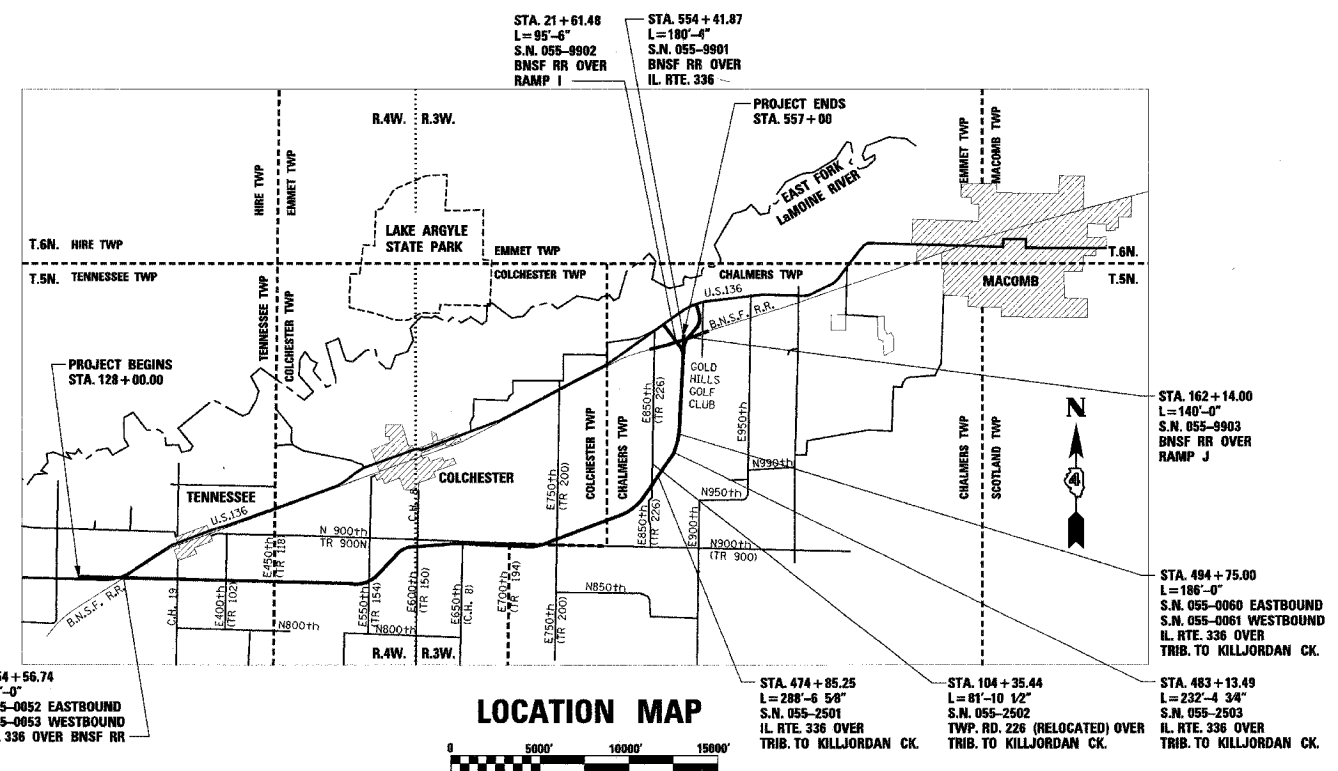
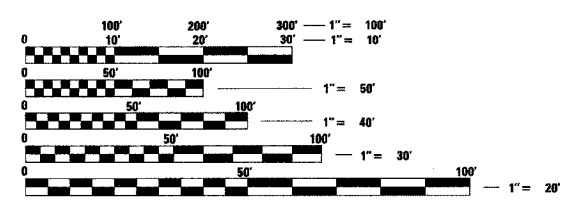
701400-02

DESIGN DESIGNATION

7000 (ADT) (2028) RURAL 2.26 (FD-20)

SURVEY BOOK NOS.

(BOOK NO'S TO BE FURNISHED BY DEPT.)



GROSS LENGTH OF IMPROVEMENT = 42,900 FEET (8.13 MILES)
NET LENGTH OF IMPROVEMENT = 42,900 FEET (8.13 MILES)

FULL SIZE PLANS HAVE BEEN PREPARED USING STANDARD ENGINEERING SCALES, REDUCED SIZED PLANS WILL NOT CONFORM TO STANDARD SCALES, IN MAKING MEASUREMENTS ON REDUCED PLANS, THE ABOVE SCALES MAY BE USED.

J.U.L.I.E.
JOINT UTILITY LOCATION INFORMATION FOR EXCAVATION
1-800-892-0123

CATALOG NO. 030010-03D
CONTRACT NO. 68205

- NPDES PERMIT REQUIRED
- QC/QA BITUMINOUS
- QC/QA CONCRETE
- BITUMINOUS SUPERPAVE

REVISED
5-30-06

DESIGNED BY:



STS Consultants

111 NE Jefferson Ave.
Peoria, Illinois 61602
Ph(309)676-8464
FAX(309)676-5445
DESIGN FIRM REGISTRATION
NO. 184-001518

IDOT PROJECT ENGINEER: TOM LACY PHONE: 671-3453
IDOT LIASON ENGINEER: ELIAS ELDERZI PHONE: 671-3459

GENERAL NOTES

SOIL REPORT AVAILABILITY

ALL SOILS DATA COLLECTED AND PROCESSED FOR THE SOILS REPORT MADE IN CONJUNCTION WITH THE DESIGN OF THIS IMPROVEMENT IS ON FILE AT THE DISTRICT 4 OFFICE WHERE IT IS AVAILABLE FOR THE INSPECTION OF CONTRACTORS OR PROSPECTIVE BIDDERS. BY SUBMITTING A BID, THE CONTRACTOR ACKNOWLEDGES THAT THE SOILS REPORT HAS BEEN MADE AVAILABLE AND IS AWARE OF THE REPORT CONTENTS AND APPENDICES.

AVAILABILITY OF ELECTRONIC FILES

MICROSTATION AND GEOPAK FILES OF THIS PROJECT WILL BE MADE AVAILABLE TO THE CONTRACTOR. IF THERE IS A CONFLICT BETWEEN THE ELECTRONIC FILES AND THE PRINTED CONTRACT PLANS AND DOCUMENTS, THE PRINTED CONTRACT PLANS AND DOCUMENTS SHALL TAKE PRECEDENCE OVER THE ELECTRONIC FILES. THE CONTRACTOR SHALL ACCEPT ALL RISK ASSOCIATED WITH USING THE ELECTRONIC FILES AND SHALL HOLD THE DEPARTMENT HARMLESS FOR ANY ERRORS OR OMISSIONS IN THE ELECTRONIC FILES AND THE DATA CONTAINED THEREIN. ERRORS OR DELAYS RESULTING FROM THE USE OF THE ELECTRONIC FILES BY THE CONTRACTOR SHALL NOT RESULT IN AN EXTENSION OF TIME FOR ANY INTERIM OR FINAL COMPLETION DATE OR SHALL NOT BE CONSIDERED CAUSE FOR ADDITIONAL COMPENSATION. THE CONTRACTOR SHALL NOT USE, SHARE, OR DISTRIBUTE THESE ELECTRONIC FILES EXCEPT FOR THE PURPOSE OF CONSTRUCTING THIS CONTRACT. ANY CLAIMS BY THIRD PARTIES DUE TO USE OR ERRORS SHALL BE THE SOLE RESPONSIBILITY OF THE CONTRACTOR. THE CONTRACTOR SHALL INCLUDE THIS DISCLAIMER WITH THE TRANSFER OF THESE ELECTRONIC FILES TO ANY OTHER PARTIES AND SHALL INCLUDE APPROPRIATE LANGUAGE BINDING THEM TO SIMILAR RESPONSIBILITIES.

TREE REMOVAL - UTILITY RELOCATION

TREE REMOVAL MAY BE NECESSARY PRIOR TO UTILITY COMPANIES BEING ABLE TO RELOCATE THEIR FACILITIES OUTSIDE THE CONSTRUCTION LIMITS. THE CONTRACTOR SHOULD COORDINATE ANY CONTRACT TREE REMOVAL ACTIVITIES WITH THE UTILITY COMPANIES TO ELIMINATE CONFLICTS AND POTENTIAL DELAYS CAUSED BY UTILITY TREE REMOVAL ACTIVITIES OR INCOMPLETE UTILITY RELOCATIONS.

PLAN ELEVATIONS - U.S.G.S. MEAN SEA LEVEL DATUM

ALL ELEVATIONS SHOWN ON THE PLANS ARE ESTABLISHED FROM U.S.G.S. MEAN SEA LEVEL DATUM.

PROPERTY OWNER ACCESS REQUIREMENT

ACCESS MUST BE MAINTAINED TO ALL EXISTING PROPERTIES DURING CONSTRUCTION PER ARTICLE 107.09 UNLESS ARRANGEMENTS ARE MADE IN WRITING BY THE CONTRACTOR WITH THE PROPERTY OWNERS WITH A COPY TO THE ENGINEER FOR SHORT-TERM CLOSURES.

TREE REMOVAL

THE DISTRICT FOUR TREE COMMITTEE SHOULD BE CONTACTED AND PRIOR APPROVAL OBTAINED FOR ANY TREE REMOVAL BEYOND THE LIMITS/LOCATIONS INCLUDED IN THE PLANS.

ENVIRONMENTAL REVIEWS

PRIOR TO THE USE OF ANY PROPOSED BORROW AREAS, USE AREAS (TEMPORARY ACCESS ROADS, DETOURS, RUN-AROUNDS, ETC.) AND/OR WASTE AREAS, THE CONTRACTOR SHALL FILE THE REQUIRED ENVIRONMENTAL RESOURCE REQUEST SURVEYS ACCORDING TO SECTION 107.22 OF THE STANDARD SPECIFICATIONS. THESE SURVEYS ARE REQUIRED IN ORDER FOR THE DEPARTMENT TO CONDUCT CULTURAL AND BIOLOGICAL RESOURCE SURVEYS FOR THE PROPOSED SITE.

PRIOR TO ANY WASTE MATERIALS BEING REMOVED FROM THE CONSTRUCTION SITE THE REQUIRED ENVIRONMENTAL RESOURCE SURVEYS WILL NEED TO BE OBTAINED AND FILED BY THE CONTRACTOR. EXCESS WASTE PRODUCTS REMOVED FROM THE CONSTRUCTION SITE SHALL BE DISPOSED OF AS REQUIRED IN SECTION 202.03 OF THE STANDARD SPECIFICATIONS.

ANY PROTRUDING METAL BARS SHALL BE REMOVED PRIOR TO THE DISPOSAL OF BROKEN CONCRETE AT APPROVED DISPOSAL SITES.

THE REQUIRED ENVIRONMENTAL RESOURCE DOCUMENTATION SHALL INCLUDE THE FOLLOWING:

- BDE FORM 2289 (ENVIRONMENTAL SURVEY REQUEST)
- A LOCATION MAP SHOWING THE SIZE LIMITS AND LOCATION OF THE USE AREA
- SIGNED PROPERTY OWNER AGREEMENT FORM
- COLOR PHOTOGRAPHS DEPICTING THE USE AREA

PLEASE NOTE THAT A MINIMUM OF TWO WEEKS SHALL BE ALLOWED FOR THE DISTRICT TO OBTAIN THE REQUIRED ENVIRONMENTAL CLEARANCES.

AGGREGATE FOR DRIVEWAY REPLACEMENT

THE MATERIAL USED FOR CONSTRUCTION OF PERMANENT AGGREGATE DRIVEWAYS SHALL BE GRAVEL OR CRUSHED STONE, AS DIRECTED BY THE ENGINEER, TO REPLACE IN KIND THE EXISTING AGGREGATE DRIVEWAYS.

NO ADDITIONAL COMPENSATION BE PROVIDED FOR THIS REQUIREMENT BUT SHALL BE CONSIDERED AS INCLUDED IN THE COST OF THE PAY ITEM FOR THE AGGREGATE AS SPECIFIED ON THE PLANS.

LABORATORY TESTING OF SUPERPAVE MIXES

SOME AGGREGATE COMPOSITIONS PRODUCE INCONSISTENT RESULTS WHEN BURNED IN THE IGNITION OVEN. THE ENGINEER WILL DETERMINE WHETHER THE IGNITION OVEN OR AC NUCLEAR GAUGE WILL BE REQUIRED AFTER THE AGGREGATE SOURCES HAVE BEEN IDENTIFIED.

PAVEMENT STATION NUMBERS & PLACEMENT

THE CONTRACTOR SHALL PROVIDE LABOR AND MATERIALS REQUIRED TO IMPRINT PAVEMENT STATION NUMBERS IN THE FINISHED SURFACE OF THE PAVEMENT AND/OR OVERLAY. THE NUMBERS SHALL BE APPROXIMATELY 3/4 INCH WIDE, 5 INCHES HIGH AND 5/8 INCH DEEP.

THE PAVEMENT STATION NUMBERS SHALL BE INSTALLED AS SPECIFIED HEREIN:

- INTERVAL: 200 FEET
- BOTTOM OF NUMBERS: 6 INCHES FROM THE INSIDE EDGE OF THE PAVEMENT MARKING
- LOCATION:
 - 2, 3, & 5 LANE PAVEMENTS: RIGHT EDGE OF PAVEMENT IN DIRECTION OF INCREASING STATIONS
 - MULTI-LANE DIVIDED ROADWAYS: OUTSIDE EDGE OF PAVEMENT IN BOTH DIRECTIONS
 - RAMPS: ALONG BASELINE EDGE OF PAVEMENT
- POSITION: STATIONS SHALL BE PLACED SO THEY CAN BE READ FROM THE ADJACENT SHOULDER
- FORMAT: PAVEMENT STATIONS SHALL USE THIS FORMAT "XXX", WHERE X REPRESENTS THE PAVEMENT STATION

THIS WORK WILL NOT BE PAID FOR SEPARATELY, BUT WILL BE CONSIDERED INCLUDED IN THE COST OF THE ASSOCIATED PAVEMENT AND/OR OVERLAY PAY ITEMS.

PAVING SURFACE COURSE

CONTINUOUS PAVING OPERATIONS ON THE MAIN ROADWAY SHALL BE MAINTAINED AT ALL TIMES DURING THE CONSTRUCTION OF THE BITUMINOUS SURFACE. NO INTERRUPTIONS FOR SIDE ROADS, ENTRANCES, TURN LANES, ETC. WILL BE ALLOWED.

BITUMINOUS CONCRETE MIXTURE REQUIREMENTS

THE FOLLOWING MIXTURE REQUIREMENTS ARE APPLICABLE FOR THIS PROJECT:

LOCATION:	SURFACE	TOP BINDER LIFT
MIXTURE USE(S):	BITUMINOUS PAVEMENT FULL-DEPTH	BITUMINOUS PAVEMENT FULL-DEPTH
AC/PG:	SBR OR SBS PG 70-28	SBR OR SBS PG 70-28
RAP% (MAX): **	0%	0%
DESIGN AIR VOIDS:	4.0% @ N=70	4.0% @ N=70
MIXTURE COMPOSITION: (GRADATION MIXTURE)	IL 9.5 OR IL 12.5	IL 19.0
FRICTION AGGREGATE:	MIXTURE D	N/A

** IF RAP OPTION IS SELECTED, THE ASPHALT CEMENT GRADE MAY NEED TO BE ADJUSTED, THIS WILL BE DETERMINED BY THE MATERIALS ENGINEER.

LOCATION:	LOWER BINDER LIFTS	WIDENING
MIXTURE USE(S):	BITUMINOUS PAVEMENT FULL-DEPTH	BITUMINOUS BINDER COURSE, WIDENING
AC/PG:	PG 64-22	PG 64-22
RAP% (MAX): **	15%	15%
DESIGN AIR VOIDS:	4.0% @ N=70	4.0% @ N=70
MIXTURE COMPOSITION: (GRADATION MIXTURE)	IL 19.0	IL 19.0
FRICTION AGGREGATE:	N/A	N/A

** IF RAP OPTION IS SELECTED, THE ASPHALT CEMENT GRADE MAY NEED TO BE ADJUSTED, THIS WILL BE DETERMINED BY THE MATERIALS ENGINEER.

LOCATION:	MISCELLANEOUS BITUMINOUS CONCRETE SURFACE COURSE	MISCELLANEOUS BITUMINOUS CONCRETE LEVELING BINDER
MIXTURE USE(S):	PG 64-22	PG 64-22
AC/PG:	PG 64-22	PG 64-22
RAP% (MAX): **	15%	25%
DESIGN AIR VOIDS:	4.0% @ N=50	4.0% @ N=50
MIXTURE COMPOSITION: (GRADATION MIXTURE)	IL 9.5 OR IL 12.5	IL 9.5
FRICTION AGGREGATE:	MIXTURE C	N/A

** IF RAP OPTION IS SELECTED, THE ASPHALT CEMENT GRADE MAY NEED TO BE ADJUSTED, THIS WILL BE DETERMINED BY THE MATERIALS ENGINEER.

LOCATION:	SHOULDER BITUMINOUS SHOULDER (TOP LIFT)	SHOULDER BITUMINOUS SHOULDER (BOTTOM LIFT)
MIXTURE USE(S):	PG 64-22	PG 58-22
AC/PG:	PG 64-22	PG 58-22
RAP% (MAX): **	30%	50%
DESIGN AIR VOIDS:	3.0% @ N=30	2.0% @ N=30
MIXTURE COMPOSITION: (GRADATION MIXTURE)	IL 9.5L	CA 6, CA 10, OR CA 12
FRICTION AGGREGATE:	MIXTURE C	N/A

** IF RAP OPTION IS SELECTED, THE ASPHALT CEMENT GRADE MAY NEED TO BE ADJUSTED, THIS WILL BE DETERMINED BY THE MATERIALS ENGINEER.

BUTT JOINT CUTTING TIME RESTRICTION

BUTT JOINTS SHALL NOT BE MILLED MORE THAN THREE (3) DAYS PRIOR TO PLACEMENT OF THE BITUMINOUS SURFACE COURSE.

ORDERING LENGTH CONFIRMATION - DRAINAGE ITEMS

THE CONTRACTOR SHALL CONSULT WITH THE ENGINEER IN REGARD TO THE EXACT LENGTH OF THE BOX/PIPE CULVERTS, STORM SEWERS, AND/OR PIPE DRAINS REQUIRED PRIOR TO ORDERING THESE ITEMS.

TRANSITION PAYMENT METHOD - NEW/OLD CONSTRUCTION

TEN FOOT (10 FT.) TRANSITIONS SHALL BE USED TO MATCH PROPOSED ITEMS OF WORK TO EXISTING ITEMS IN THE FIELD UNLESS OTHERWISE SHOWN. THE TRANSITION SHALL BE PAID FOR AT THE CONTRACT UNIT PRICE FOR THE PROPOSED ITEM OF WORK SPECIFIED.

SIGN POST HOLES

VERTICAL HOLES SHALL BE CONSTRUCTED IN THE ISLAND PAVEMENT AND/OR CONCRETE MEDIAN OF THE TYPE SPECIFIED OR CONCRETE MEDIAN SURFACE 4 INCHES. THE HOLES SHALL BE 24 INCHES IN DIAMETER OR 24 INCHES SQUARE AND THEY SHALL BE FREE OF ANY OBSTRUCTION, EXCEPT EARTH, FOR A DEPTH OF 5 FEET AT THE LOCATIONS SHOWN ON THE PLANS OR AS DIRECTED BY THE ENGINEER. ANY HOLES NOT USED FOR THE PLACEMENT OF SIGNS SHALL BE FILLED AND COMPACTED FLUSH WITH THE TOP OF THE ISLAND PAVEMENT, CONCRETE MEDIAN OF THE TYPES SPECIFIED, CONCRETE MEDIAN SURFACE 4 INCHES. THE TOP 3 INCHES OF SAID COMPACTED FILL SHALL CONSIST OF A BITUMINOUS CONCRETE MIXTURE. ALL HOLES IN WHICH THE SIGN POSTS ARE INSTALLED AT THE TIME OF THIS CONTRACT SHALL BE SIMILARLY FILLED.

THIS WORK, INCLUDING ANY REQUIRED PAVEMENT REMOVAL NECESSARY TO CONSTRUCT THE SIGN POST HOLES, WILL NOT BE PAID FOR SEPARATELY BUT SHALL BE INCLUDED IN THE CONTRACT UNIT PRICE PER SQUARE FOOT FOR ISLAND PAVEMENT AND/OR CONCRETE MEDIAN OF THE TYPE SPECIFIED, OR CONCRETE MEDIAN SURFACE, 4 INCHES.

ENGINEERS FIELD OFFICE

ADD THE FOLLOWING SENTENCE TO THE END OF PARAGRAPH 670.02 (I) AND 670.04 (E): ALL OF THE TELEPHONE LINES PROVIDED SHALL HAVE UNPUBLISHED NUMBERS.

SIGNING

SIGN LOCATIONS MAY VARY FROM THE STATIONS SHOWN ON THE PLANS IN ACCORDANCE WITH DIRECTIONS FROM THE ENGINEER AT THE TIME OF CONSTRUCTION. SIGN LOCATIONS MAY BE ADJUSTED IN THE FIELD TO AVOID ANY FOUND UTILITIES.

F.A.P. RTE.	SECTION	COUNTY	TOTAL SHEETS	SHEET NO.
315	55-2	McDONOUGH	1025	3
STA.		TO STA.		
FED. ROAD DIST. NO. 4 ILLINOIS FED. AID PROJECT				

INFORMATION FOR SEALING ABANDONED WATER WELLS

LOCATION	DIAMETER	DEPTH
STA. 140+30±, ±24' LT	4"	320 FEET
STA. 147+53±, ±49' LT.	INFORMATION NOT AVAILABLE	
STA. 148+10±, ±60' LT.	5'	20 FEET
STA. 414+30±, ±48' RT.	12"	75 FEET

REVISED 5-30-06		ILLINOIS DEPARTMENT OF TRANSPORTATION GENERAL NOTES IL. ROUTE 336
REVISIONS		
NAME	DATE	
DATE 3/30/06		DRAWN BY CHECKED BY

DRAWN BY: [blank] CHECKED BY: [blank] DATE: 3/30/06

F.A.P. RTE.	SECTION	COUNTY	TOTAL SHEETS	SHEET NO.
315	55-2	McDONOUGH	1025	9
STA.		TO STA.		
FED. ROAD DIST. NO. 4		ILLINOIS FED. AID PROJECT		

SUMMARY OF QUANTITIES				MCDONOUGH COUNTY											
				80% FEDERAL / 20% STATE											
				CONSTRUCTION TYPE CODE											
CODE NO.	PAY ITEM	UNIT	TOTAL QUANTITY	ROADWAY RURAL			Y030-1E LIGHTING	BRIDGES X181-5B SN 055-0052, 0053 BRIDGES OVER RAILROAD	BRIDGES X641-5B SN 055-9901 RR BRIDGES OVER ROADWAY	BRIDGES X641-5B SN 055-9902 RR BRIDGES OVER ROADWAY	BRIDGES X641-5B SN 055-9903 RR BRIDGES OVER ROADWAY	BRIDGES X081-2A SN 055-0060, 0061 WILDLIFE BRIDGES	CULVERTS X028-2A SN 055-2501, 2502, 2503 CAST IN PLACE CULVERTS		
				(BIT.)	(A-3)	(AGG)									
28300400	AGGREGATE DITCH	TON	17,551	15,239	1,871	441									
28400100	GABIONS	CU YD	152	140	12										
28500100	FABRIC FORMED CONCRETE REVETMENT MATS	SQ YD	558	558											
30103000	SHAPING AND GRADING ROADWAY	UNIT	29		29										
30200650	PROCESSING MODIFIED SOILS 12"	SQ YD	378,790	378,790											
30201250	PROCESSING MODIFIED SOILS 24"	SQ YD	3,736	3,736											
30201500	LIME	TON	8,604.0	8,604.0											
31100910	SUB-BASE GRANULAR MATERIAL, TYPE A 12"	SQ YD	14,152	14,152											
31100935	SUB-BASE GRANULAR MATERIAL, TYPE A 18"	SQ YD	8,510	8,510											
31100965	SUB-BASE GRANULAR MATERIAL, TYPE A 24"	SQ YD	6,206	6,206											
31101900	SUB-BASE GRANULAR MATERIAL, TYPE C	TON	82,724	82,724											
35100700	AGGREGATE BASE COURSE, TYPE A 8"	SQ YD	26,836	5,959	20,877										
35101800	AGGREGATE BASE COURSE, TYPE B 6"	SQ YD	6,454	6,346	108										
35102000	AGGREGATE BASE COURSE, TYPE B 8"	SQ YD	3,654	3,654											
40200700	AGGREGATE SURFACE COURSE, TYPE A 8"	SQ YD	7,109		7,109										
40200800	AGGREGATE SURFACE COURSE, TYPE B	TON	3,897	2,483	1,255	159									
40300200	BITUMINOUS MATERIALS (PRIME COAT)	TON	55		55										
40300400	BITUMINOUS MATERIALS (COVER AND SEAL COATS)	TON	164		164										
40300500	COVER COAT AGGREGATE	TON	602		602										
40300600	SEAL COAT AGGREGATE	TON	342		342										
40600200	BITUMINOUS MATERIALS (PRIME COAT)	TON	40	40											
40600895	CONSTRUCTING TEST STRIP	EACH	2	2											
40600980	BITUMINOUS SURFACE REMOVAL - BUTT JOINT	SQ YD	223	223											
40600990	TEMPORARY RAMP	SQ YD	190	190											
42001165	BRIDGE APPROACH PAVEMENT	SQ YD	1,175	1,175											
42300400	PORTLAND CEMENT CONCRETE DRIVEWAY PAVEMENT 8 INCH	SQ YD	128	128											
44000100	PAVEMENT REMOVAL	SQ YD	26,897	26,897											
44004250	PAVED SHOULDER REMOVAL	SQ YD	2,753	2,753											
44201747	CLASS D PATCHES, TYPE IV, 8 INCH	SQ YD	204	204											
48101200	AGGREGATE SHOULDERS, TYPE B	TON	30,058	28,212	1,289	557									

* SPECIALTY ITEMS

REVISIONS	
NAME	DATE

ILLINOIS DEPARTMENT OF TRANSPORTATION
SUMMARY OF QUANTITIES
IL. ROUTE 336

REVISOR
5-30-06

DATE 3/30/06

DRAWN BY
 CHECKED BY

3/30/06 12:28:53 PM

F.A.P. RTE.	SECTION	COUNTY	TOTAL SHEETS	SHEET NO.
315	55-2	McDONOUGH	1025	53
STA.		TO STA.		
FED. ROAD DIST. NO. 4		ILLINOIS FED. AID PROJECT		

LOCATION	SQ YD	SQ YD	TON	SQ YD	SQ YD	SQ YD	TON	SQ YD	SQ YD	CU YD	TON	TON	SQ YD	SQ YD
RAMP J														
STA. 150+00.00 TO STA. 182+34.80							0.8	6,588.8	3,527.3	1,010.1	876.7			
STA. 150+00.00 TO STA. 155+20.00	1,241.3		27.6											
STA. 155+20.00 TO STA. 156+40.00					373.3									
STA. 156+40.00 TO STA. 172+10.00	4,950.1		110.3											
STA. 172+10.00 TO STA. 182+34.80					3,188.3									
U.S. ROUTE 136 (RELOCATED)														
STA. 1+41.50 TO STA. 31+74.65							1.0	8,088.3	2,701.5		1,377.3			
CROSS-OVERS														
STA. 18+28.68 TO STA. 28+00.00	2,834.2		63.1									237.6	2,121.0	713.2
STA. 128+00.00 TO STA. 138+80.28	2,942.9		65.6									249.4	2,227.2	715.7
SUBTOTAL	378,789.3	3,735.6	8,604.0	14,151.7	6,206.0	8,510.0	31.2	263,016.3	132,440.0	40,352.6	27,964.8	487.0	4,348.2	1,428.9
TOTAL	378,790	3,736	8,604	14,152	6,206	8,510	32	263,016	132,440	40,353	27,965	487	4,349	1,429

LOCATION	SQ YD	SQ YD	SQ YD	SQ YD	TON	TON	TON	TON	TON	TON	TON	TON
TWP. ROAD 350 E												
STA. 4+86.10 TO STA. 8+89.60	863.4				21.6	10.8	63.8	1.73	5.18			
STA. 11+10.90 TO STA. 13+75.00	522.4				13.1	6.5	47.9	1.04	3.13			
SERVICE DRIVE												
STA. 0+00.00 TO STA. 27+40.33			7,108.5				557.1					
TWP. ROAD 118												
STA. 15+29.90 TO STA. 18+88.60	822.9						62.3		1.65	149.8	92.2	
STA. 20+99.20 TO STA. 22+90.00	375.4						33.2		0.75	68.3	42.0	
TWP. ROAD 150/COUNTY HIGHWAY 8												
STA. 25+25.00 TO STA. 28+86.70	725.9				18.1	9.1	62.9	1.45	4.36			
STA. 31+42.30 TO STA. 38+00.00	2,093.1						138.9		4.44	380.9	234.4	
TWP. ROAD 900N (WEST)												
STA. 21+65.00 TO STA. 24+00.00	452.3				11.3	5.7	37.5	0.90	2.71			
COUNTY HIGHWAY 8 (EAST)												
STA. 37+77.80 TO STA. 38+73.70	116.1						14.2		0.25	21.1	13.0	
TWP. ROAD 194												
STA. 47+00.00 TO STA. 48+90.70	328.7				8.2	4.1	33.6	0.66	1.97			
TWP. ROAD 900N (RELOCATED)												
STA. 72+20.00 TO STA. 89+96.61	4,430.6				110.8	55.4	346.4	8.86	26.58			
TWP. ROAD 200 (RELOCATED)												
STA. 46+87.00 TO STA. 58+58.50	3,088.8				77.2	38.6	234.6	6.18	18.53			
STA. 61+41.50 TO STA. 69+50.00	2,132.5				53.3	26.7	147.9	4.27	12.80			
TWP. ROAD 900N (EAST)												
STA. 99+50.00 TO STA. 99+88.00		107.5			2.6	1.3		0.21	0.65			
STA. 100+62.40 TO STA. 102+70.00	380.8				9.5	4.8	36.8	0.76	2.28			
TWP. ROAD 226 (RELOCATED)												
STA. 100+99.00 TO STA. 111+30.00	2,480.8				62.0	31.0	186.8	4.96	14.88			
GOLF COURSE ACCESS ROAD												
STA. 29+14.48 TO STA. 58+50.41		6,346.0			79.3	79.3		12.69	38.08			
CUL-DA-SACS (IL 336 STATIONING)												
STA. 209+97.10 TO STA. 211+01.00	1,063.4				26.6	13.3	18.0	2.12	6.38			
STA. 209+97.00 TO STA. 211+00.06	1,059.6				26.4	13.2	14.8	2.12	6.36			
STA. 289+98.30 TO STA. 290+93.60	1,072.5				26.8	13.4	17.8	2.14	6.44			
STA. 293+02.10 TO STA. 294+15.20	1,130.8				28.2	14.1	21.2	2.26	6.78			
STA. 461+49.80 TO STA. 462+70.50	1,145.0				26.8	14.3	16.8	2.29	6.87			
PRIVATE ENTRANCE OFF TWP. RD. 226												
STA. 500+12.00 TO STA. 504+56.00				1,103.6								
SUBTOTAL	24,285.0	6,453.5	7,108.5	1,103.6	601.9	341.5	2,092.5	54.64	163.99	7.09	620.1	381.6
TOTAL	24,285	6,454	7,109	1,104	602	342	2,093	55	164	8	621	382

82,724 (TON)

CONVERSION RATES
 ASPHALT: 112 LB/SQ YD IN
 AGGREGATE = 2.05 TON/CU YD
 0.004 TONS = GALLON

LOCATION	TON
ILL. 336	
STA. 129+57.40 RT	64
STA. 140+00.00 RT	564
STA. 198+00.00 RT	85
STA. 210+04.20 LT	49
STA. 210+12.30 RT	44
STA. 210+98.90 RT	34
STA. 264+00.00 LT	94
STA. 269+50.00 LT	93
STA. 269+50.00 RT	101
STA. 280+91.30 RT	59
STA. 308+50.00 LT	91
STA. 308+50.00 RT	98
STA. 316+00.00 RT	70
STA. 442+50.00 LT	46
STA. 442+50.00 RT	41
STA. 462+27.80 RT	17
STA. 462+68.50 RT	19
STA. 483+57.70 RT	25
STA. 477+50.00 RT	170
STA. 489+00.00 RT	210
STA. 503+75.00 RT	53
U.S. ROUTE 136 (RELOCATED)	
STA. 5+00.00 LT	68
STA. 5+00.00 RT	55
STA. 8+50.00 RT	44
STA. 14+00.00 LT	53
STA. 14+00.00 RT	45
STA. 21+50.00 RT	72
SERVICE DRIVE	
STA. 0+00.00 RT	36
STA. 12+00.00 RT	29
STA. 17+04.80 RT	47
STA. 19+17.80 RT	47
TR 350E	
STA. 4+60 RT	34
TWP. ROAD 118	
STA. 16+22.00 RT	41
STA. 24+00.00 RT	24
CO. HWY. 8 (REL.)/TR 150	
STA. 27+00.00 LT	55
TWP. ROAD 900N (WEST)	
STA. 19+50.00 RT	35
STA. 23+00.00 RT	29
TWP. ROAD 194	
STA. 46+25.00 LT	27
TWP. ROAD 900N (RELOCATED)	
STA. 87+00.00 RT	37
TWP. ROAD 200 (RELOCATED)	
STA. 51+00.00 RT	42
STA. 64+94.60 LT	57
STA. 64+94.60 RT	48
TWP. ROAD 226 (RELOCATED)	
STA. 103+50.00 LT	387
STA. 106+75.00 LT	98
STA. 107+37.00 RT	128
PRIVATE ENTRANCE OFF TWP. 226	
STA. 500+10-500+55	333.0
SUBTOTAL	3,896.7
TOTAL	3,897

REVISED
5-30-02

REVISIONS	NAME	DATE

ILLINOIS DEPARTMENT OF TRANSPORTATION
SCHEDULE OF QUANTITIES
 IL. ROUTE 336

DATE 3/30/06

DRAWN BY
 CHECKED BY

SHEET 53A OF 107