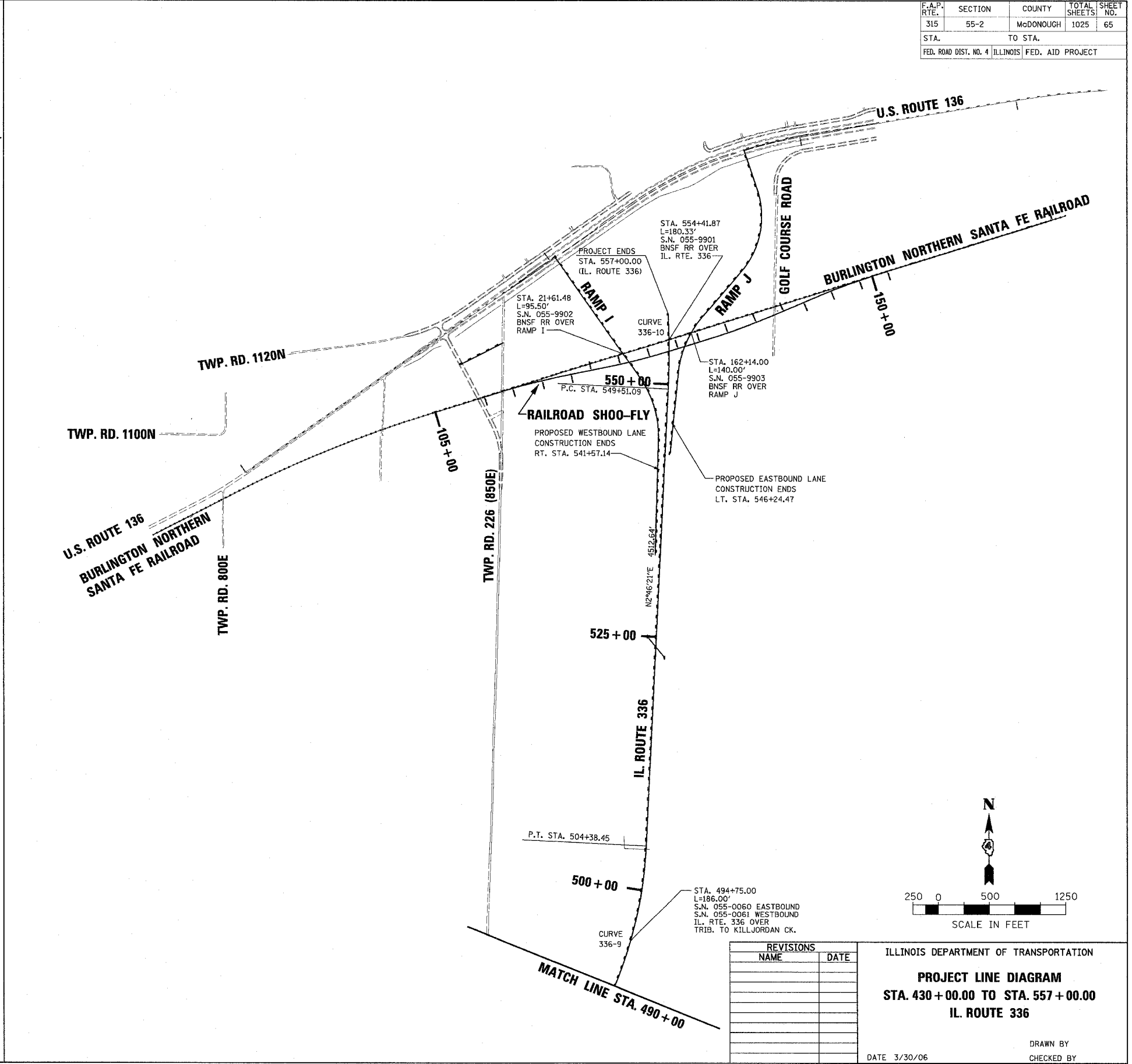
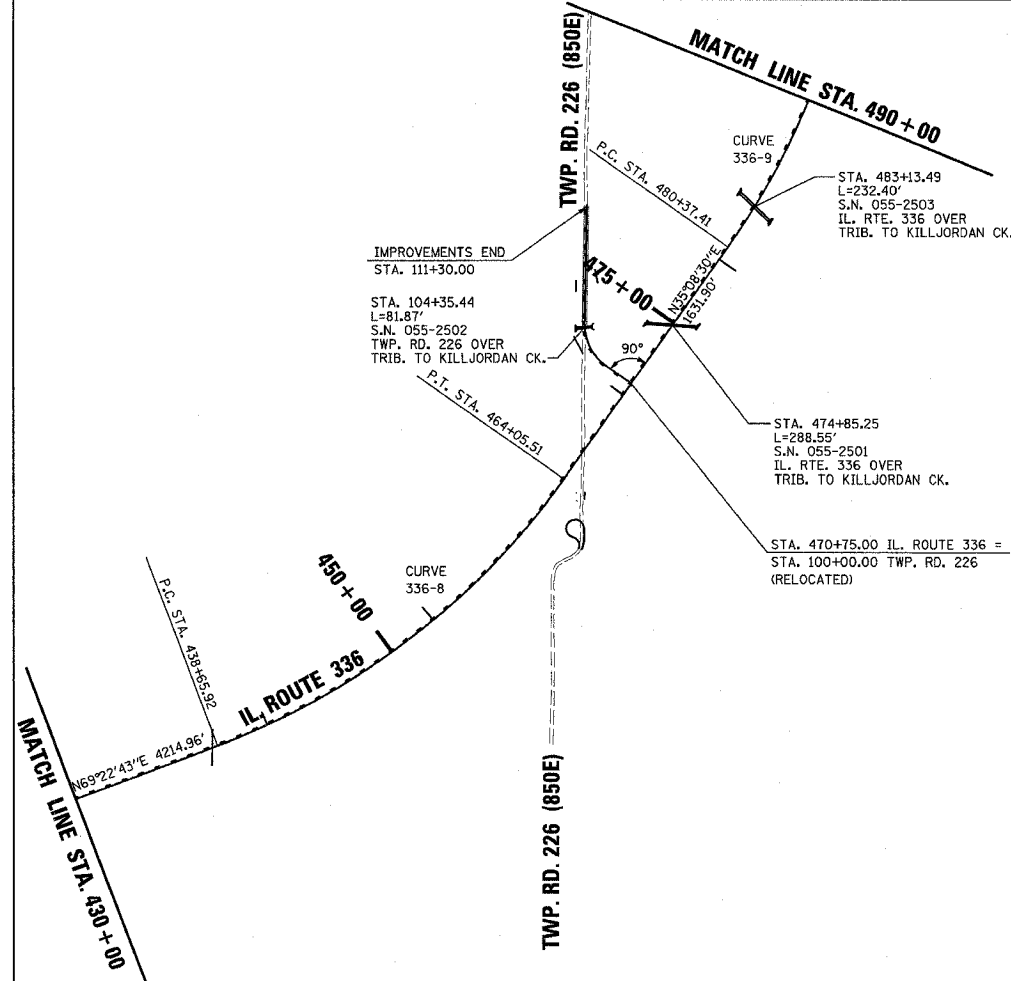
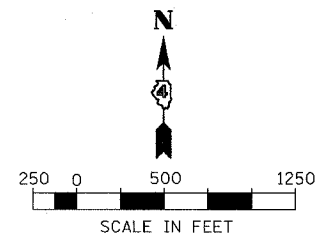


F.A.P. RTE.	SECTION	COUNTY	TOTAL SHEETS	SHEET NO.
315	55-2	McDONOUGH	1025	65
STA.		TO STA.		
FED. ROAD DIST. NO. 4		ILLINOIS FED. AID PROJECT		



PROPOSED CURVE DATA			
CURVE NO.	336-8	336-9	336-10
DESIGN SPEED	70 mph	70 mph	70 mph
P.I. STA.	451+74.90	492+70.91	561+78.45
Δ	34° 14' 14" (LT)	32° 22' 09" (LT)	18° 14' 29" (LT)
R	4250.00	4250.00	7645.00
T	1308.98	1233.50	1227.36
L	2539.59	2401.04	2433.94
E	197.01	175.38	97.90
S.E.	4.20%	4.20%	2.60%
TRANSITION IN	437+02 TO 439+27	478+74 TO 480+98	548+24 TO 549+91
TRANSITION OUT	463+45 TO 465+68	503+77 TO 506+01	573+46 TO 575+12
P.C. STA.	438+65.92	480+37.41	549+51.09
P.T. STA.	464+05.51	504+38.45	573+85.04



REVISIONS	
NAME	DATE

ILLINOIS DEPARTMENT OF TRANSPORTATION
PROJECT LINE DIAGRAM
STA. 430 + 00.00 TO STA. 557 + 00.00
IL. ROUTE 336

DATE 3/30/06

DRAWN BY
CHECKED BY

ILLINOIS DEPARTMENT OF TRANSPORTATION 4/17/2006 7:28:31 AM