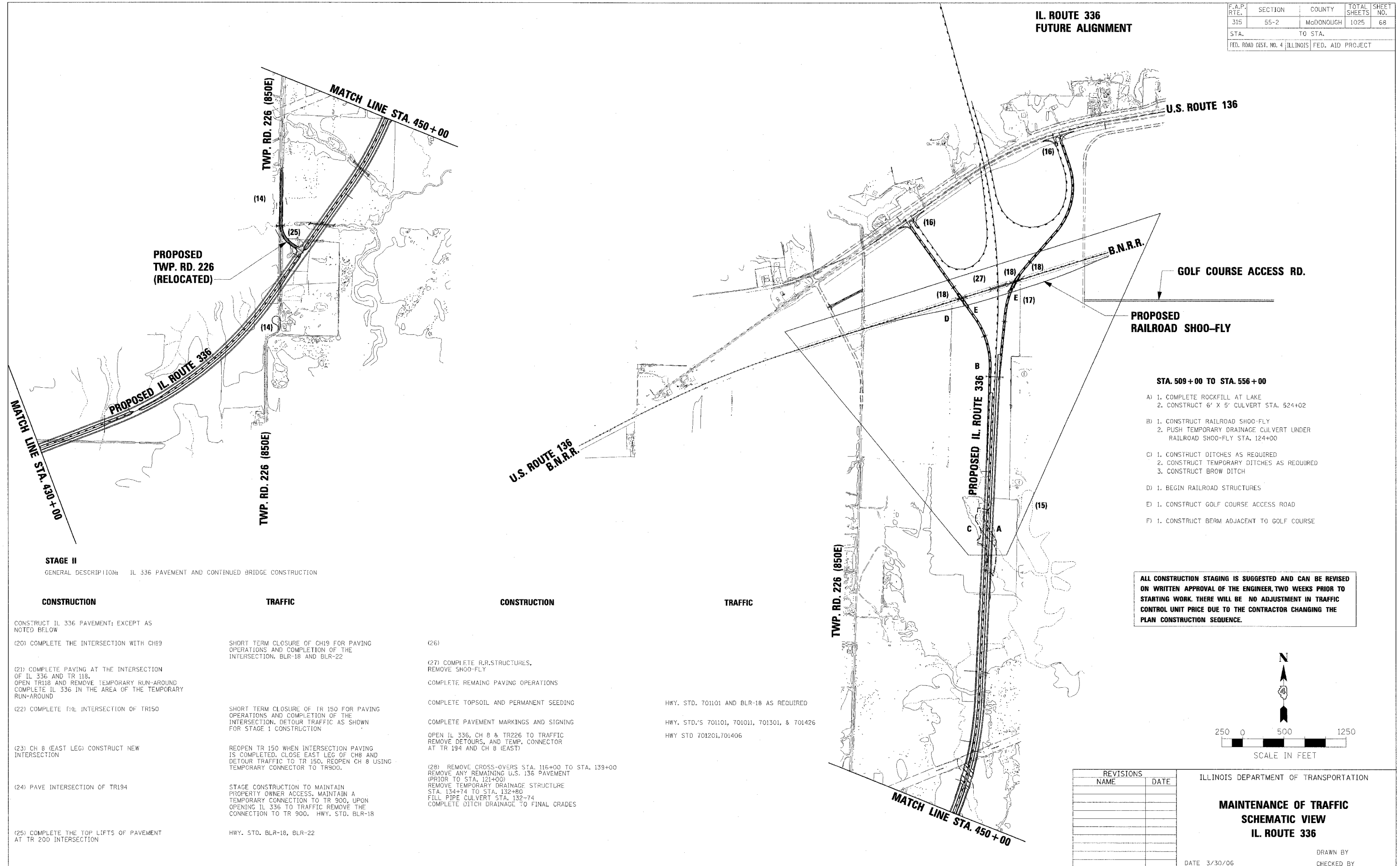


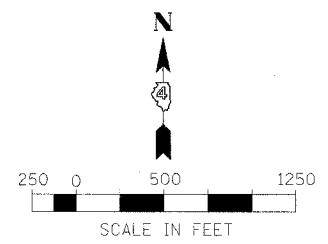
F.A.P. RTE.	SECTION	COUNTY	TOTAL SHEETS	SHEET NO.
315	55-2	McDONOUGH	1025	68
STA.		TO STA.		
FED. ROAD DIST. NO. 4		ILLINOIS FED. AID PROJECT		

**IL. ROUTE 336
FUTURE ALIGNMENT**



- STA. 509+00 TO STA. 556+00**
- A) 1. COMPLETE ROCKFILL AT LAKE
2. CONSTRUCT 6' X 5' CULVERT STA. 524+02
 - B) 1. CONSTRUCT RAILROAD SHOO-FLY
2. PUSH TEMPORARY DRAINAGE CULVERT UNDER RAILROAD SHOO-FLY STA. 124+00
 - C) 1. CONSTRUCT DITCHES AS REQUIRED
2. CONSTRUCT TEMPORARY DITCHES AS REQUIRED
3. CONSTRUCT BROW DITCH
 - D) 1. BEGIN RAILROAD STRUCTURES
 - E) 1. CONSTRUCT GOLF COURSE ACCESS ROAD
 - F) 1. CONSTRUCT BERM ADJACENT TO GOLF COURSE

ALL CONSTRUCTION STAGING IS SUGGESTED AND CAN BE REVISED ON WRITTEN APPROVAL OF THE ENGINEER, TWO WEEKS PRIOR TO STARTING WORK. THERE WILL BE NO ADJUSTMENT IN TRAFFIC CONTROL UNIT PRICE DUE TO THE CONTRACTOR CHANGING THE PLAN CONSTRUCTION SEQUENCE.



REVISIONS	
NAME	DATE

ILLINOIS DEPARTMENT OF TRANSPORTATION
**MAINTENANCE OF TRAFFIC
SCHEMATIC VIEW
IL. ROUTE 336**
DRAWN BY
CHECKED BY
DATE 3/30/06

STAGE II

GENERAL DESCRIPTION: IL 336 PAVEMENT AND CONTINUED BRIDGE CONSTRUCTION

CONSTRUCTION	TRAFFIC	CONSTRUCTION	TRAFFIC
CONSTRUCT IL 336 PAVEMENT; EXCEPT AS NOTED BELOW			
(20) COMPLETE THE INTERSECTION WITH CH19	SHORT TERM CLOSURE OF CH19 FOR PAVING OPERATIONS AND COMPLETION OF THE INTERSECTION. BLR-18 AND BLR-22	(26)	
(21) COMPLETE PAVING AT THE INTERSECTION OF IL 336 AND TR 118. OPEN TR118 AND REMOVE TEMPORARY RUN-AROUND COMPLETE IL 336 IN THE AREA OF THE TEMPORARY RUN-AROUND		(27) COMPLETE R.R. STRUCTURES, REMOVE SHOO-FLY COMPLETE REMAINING PAVING OPERATIONS COMPLETE TOPSOIL AND PERMANENT SEEDING	HWY. STD. 701101 AND BLR-18 AS REQUIRED
(22) COMPLETE THE INTERSECTION OF TR150	SHORT TERM CLOSURE OF TR 150 FOR PAVING OPERATIONS AND COMPLETION OF THE INTERSECTION. DETOUR TRAFFIC AS SHOWN FOR STAGE 1 CONSTRUCTION	COMPLETE PAVEMENT MARKINGS AND SIGNING	HWY. STD.'S 701101, 701011, 701301, & 701426
(23) CH 8 (EAST LEG) CONSTRUCT NEW INTERSECTION	REOPEN TR 150 WHEN INTERSECTION PAVING IS COMPLETED. CLOSE EAST LEG OF CH8 AND DETOUR TRAFFIC TO TR 150. REOPEN CH 8 USING TEMPORARY CONNECTOR TO TR900.	OPEN IL 336, CH 8 & TR226 TO TRAFFIC REMOVE DETOURS, AND TEMP. CONNECTOR AT TR 194 AND CH 8 (EAST)	HWY STD 701201, 701406
(24) PAVE INTERSECTION OF TR194	STAGE CONSTRUCTION TO MAINTAIN PROPERTY OWNER ACCESS. MAINTAIN A TEMPORARY CONNECTION TO TR 900. UPON OPENING IL 336 TO TRAFFIC REMOVE THE CONNECTION TO TR 900. HWY. STD. BLR-18	(28) REMOVE CROSS-OVERS STA. 116+00 TO STA. 139+00 REMOVE ANY REMAINING U.S. 136 PAVEMENT (PRIOR TO STA. 121+00) REMOVE TEMPORARY DRAINAGE STRUCTURE STA. 134+74 TO STA. 132+80 FILL PIPE CULVERT STA. 132-74 COMPLETE DITCH DRAINAGE TO FINAL GRADES	
(25) COMPLETE THE TOP LIFTS OF PAVEMENT AT TR 200 INTERSECTION	HWY. STD. BLR-18, BLR-22		