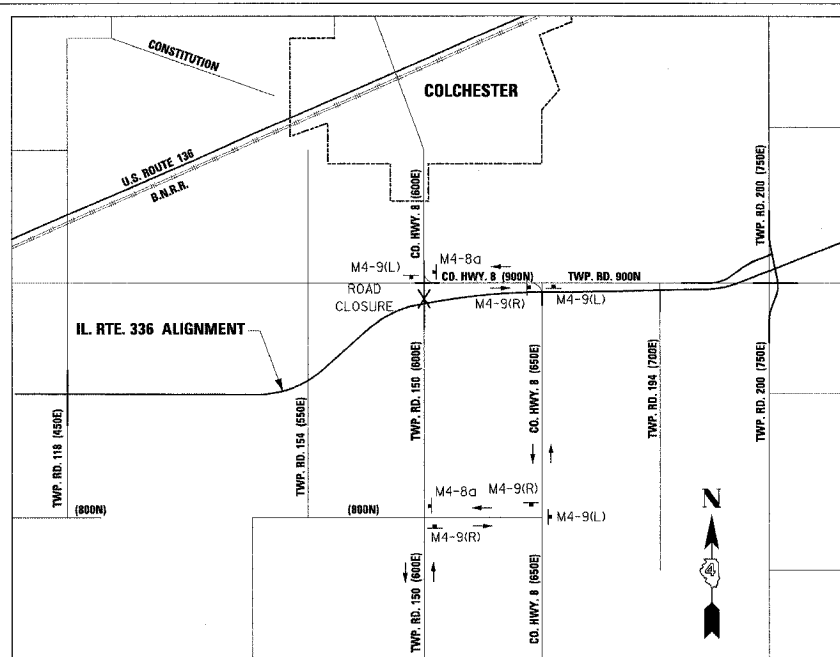
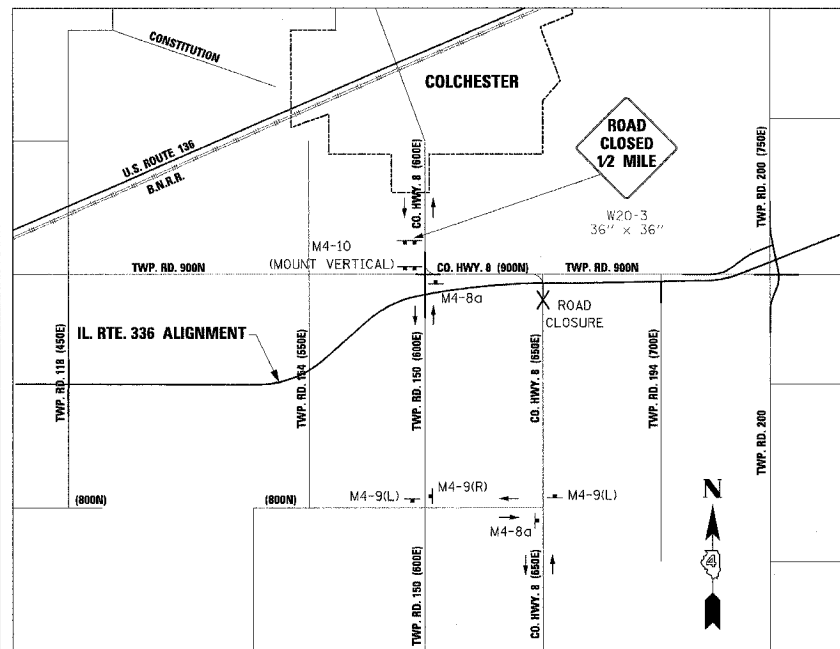


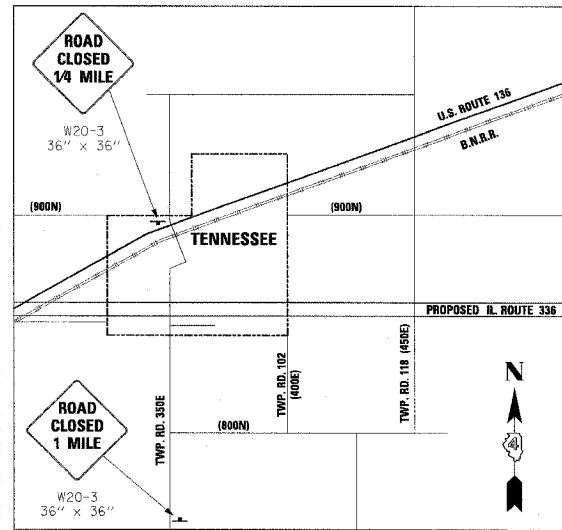
F.A.P. RTE.	SECTION	COUNTY	TOTAL SHEETS	SHEET NO.
315	3B5-221	MCDONOUGH	1025	69
STA.		TO STA.		
FED. ROAD DIST. NO. 4 ILLINOIS		FED. AID PROJECT		



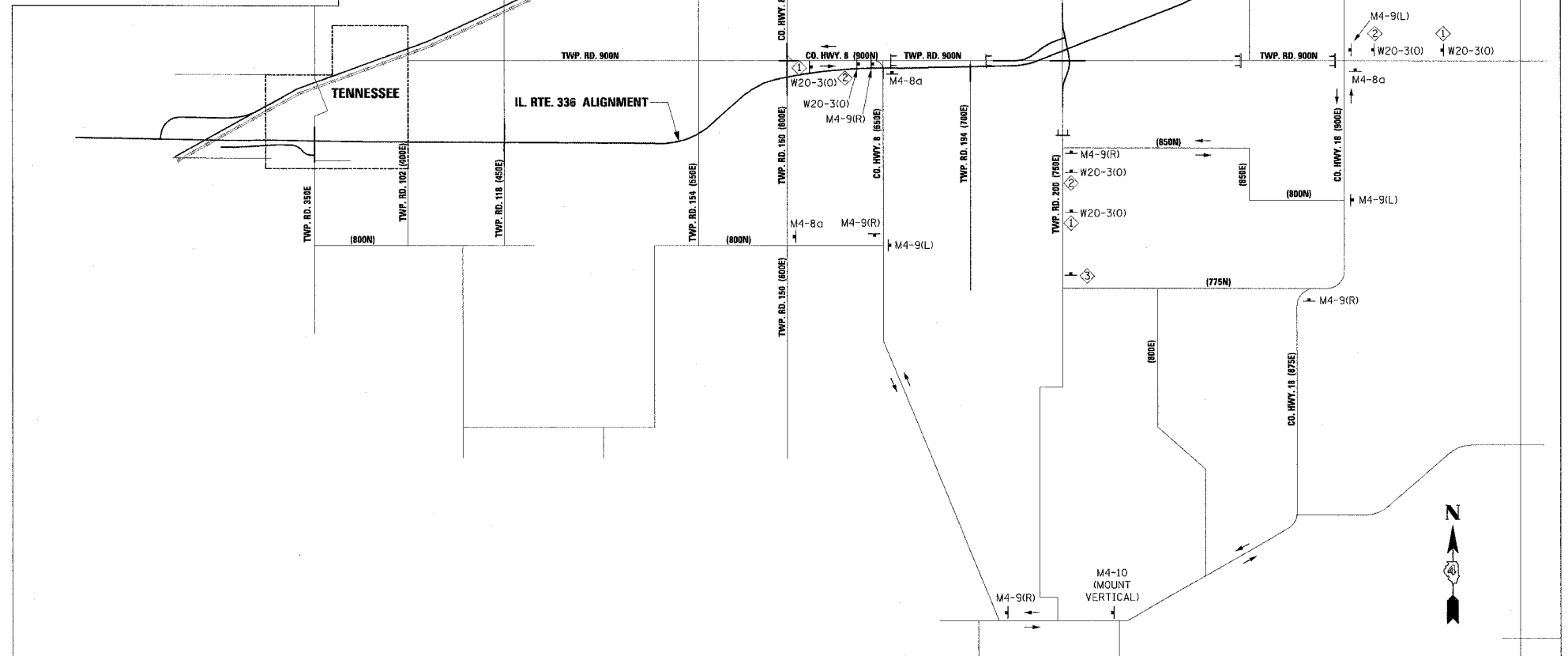
DETOUR
TWP. RD. 150 CLOSURE
NOTE: SIGNS SHOWN ARE IN ADDITION TO SPECIFIED TRAFFIC CONTROL STANDARDS.



DETOUR
CO. HWY. 8 CLOSURE
NOTE: SIGNS SHOWN ARE IN ADDITION TO SPECIFIED TRAFFIC CONTROL STANDARDS.



TWP. RD. 350E CLOSURE
NOTE: SIGNS SHOWN ARE IN ADDITION TO SPECIFIED TRAFFIC CONTROL STANDARDS.



DETOUR
TWP. RD. 200 AND TWP. RD. 900N CLOSURE
NOTE: SIGNS SHOWN ARE IN ADDITION TO SPECIFIED TRAFFIC CONTROL STANDARDS.

LEGEND

- END DETOUR
M4-8a
24" X 18"
- DETOUR
M4-9 (R) (L)
30" X 24"
- DETOUR
M4-10 (R) (L)
48" X 18"
- ROAD CLOSED AHEAD
W20-3(O)
36" X 36"
- ROAD CLOSED 500 FEET
W20-3(O)
36" X 36"
- ROAD CLOSED 1 MILE
W20-3(O)
36" X 36"
- ROAD CLOSED TO THRU TRAFFIC
R11-4
60" X 30"
- TYPE III BARRICADE
STD. BLR 22-4
STD. BLR 17-3
WITH R11-4 SIGNS

REVISIONS	
NAME	DATE

ILLINOIS DEPARTMENT OF TRANSPORTATION
**MAINTENANCE OF TRAFFIC
DETOURS
IL. ROUTE 336**
DATE 3/30/06
DRAWN BY
CHECKED BY