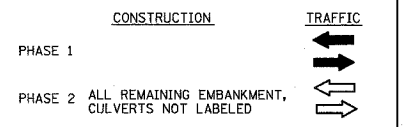


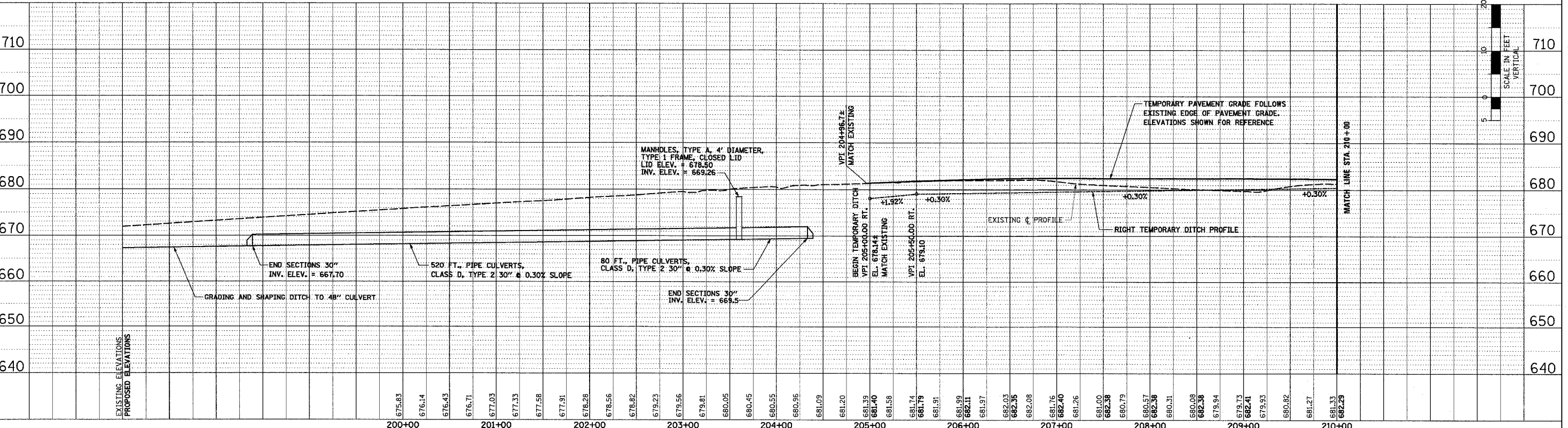
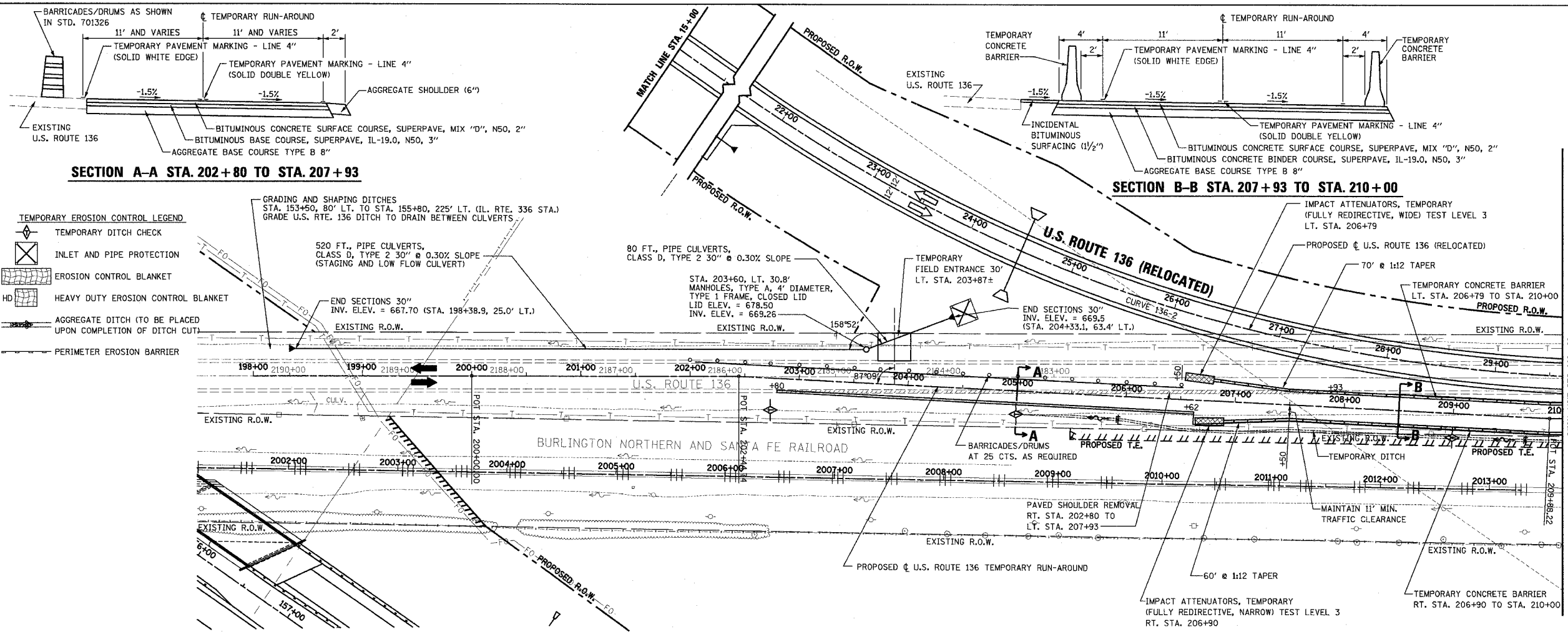
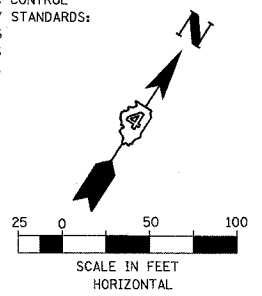
F.A.P. RTE.	SECTION	COUNTY	TOTAL SHEETS	SHEET NO.
315	55-2	MCDONOUGH	1025	73
STA. 200+00 TO STA. 210+00				
FED. ROAD DIST. NO. 4 ILLINOIS FED. AID PROJECT				



CONSTRUCTION:
 1. CONSTRUCT U.S. ROUTE 136 TEMPORARY RUN-AROUND.
 a. TEMPORARY DRAINAGE
 b. EARTHWORK
 c. PAVEMENT
 d. TEMPORARY CONCRETE BARRIER AND ATTENUATORS
 2. COMPLETE U.S. ROUTE 136 (RELOCATED).

TRAFFIC:
 1. MAINTAIN 2 WAY TRAFFIC ON EXISTING U.S. ROUTE 136 WHEN TEMPORARY RUN-AROUND IS CONSTRUCTED.
 2. SHIFT U.S. ROUTE 136 TRAFFIC TO TEMPORARY RUN-AROUND TO COMPLETE U.S. ROUTE 136 (RELOCATED).

TRAFFIC CONTROL HIGHWAY STANDARDS:
 701006
 701306
 701326
 701331



MAINTENANCE OF TRAFFIC - STAGE I - PHASE 1 - U.S. ROUTE 136 TEMPORARY RUN-AROUND - STA. 200+00 TO STA. 210+00

DATE	BY	REVISION

DATE	BY	REVISION